

# СРСП

## Lobular Pneumonia

### Modal verb



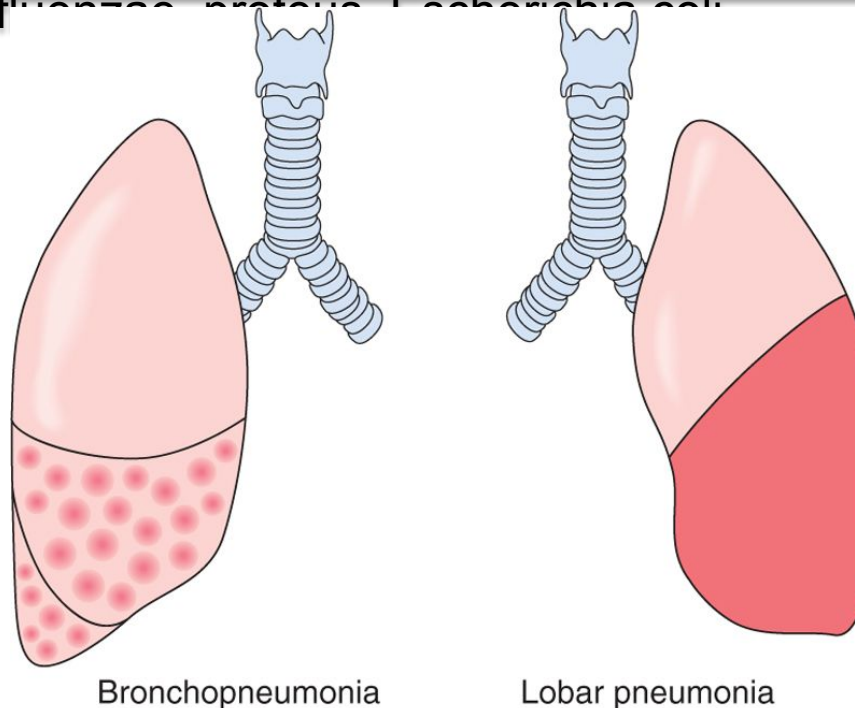
Выполнила: Гедрайтис Марина2-067  
Проверила: Дашкина Т.Г.

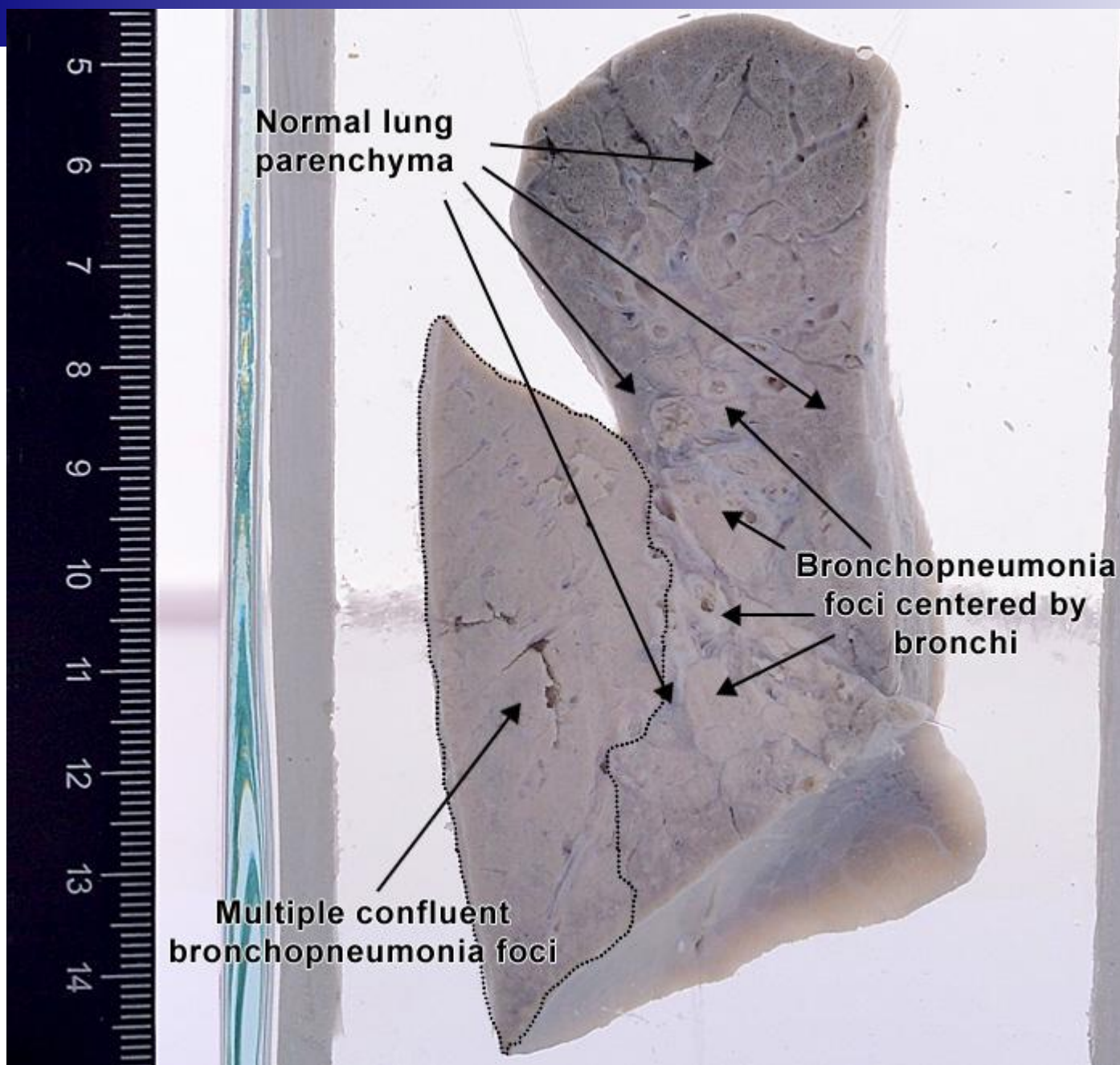
# Lobular Pneumonia

There are two main types of acute bacterial pneumonia : bronchopneumonia (with lobular topography) and lobar pneumonia (lobar topography).

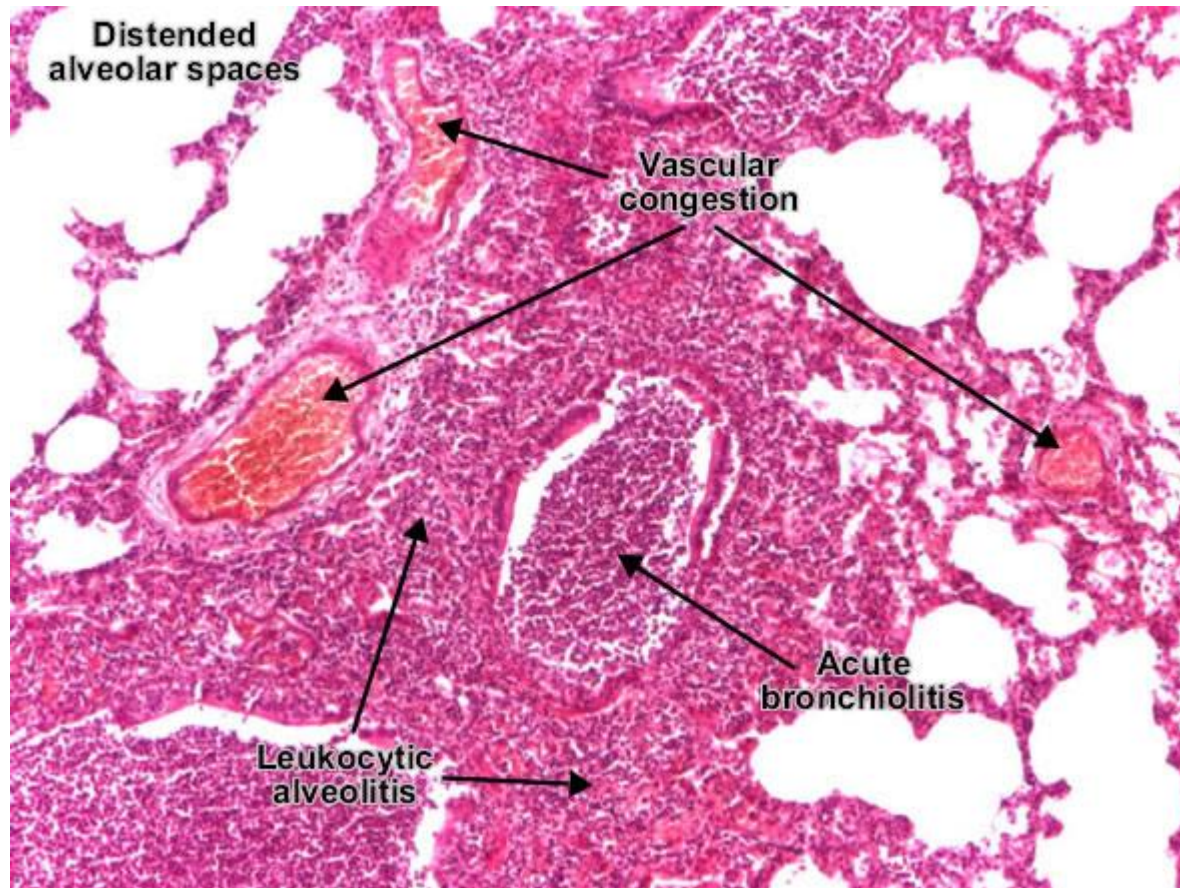
**Bronchopneumonia (Lobular pneumonia)** is an acute exudative suppurative inflammation of the lungs characterized by foci of consolidation surrounded by normal parenchyma.

Generally, it is produced by bacteria : staphylococcus, streptococcus, Haemophilus influenzae, proteus, Escherichia coli.

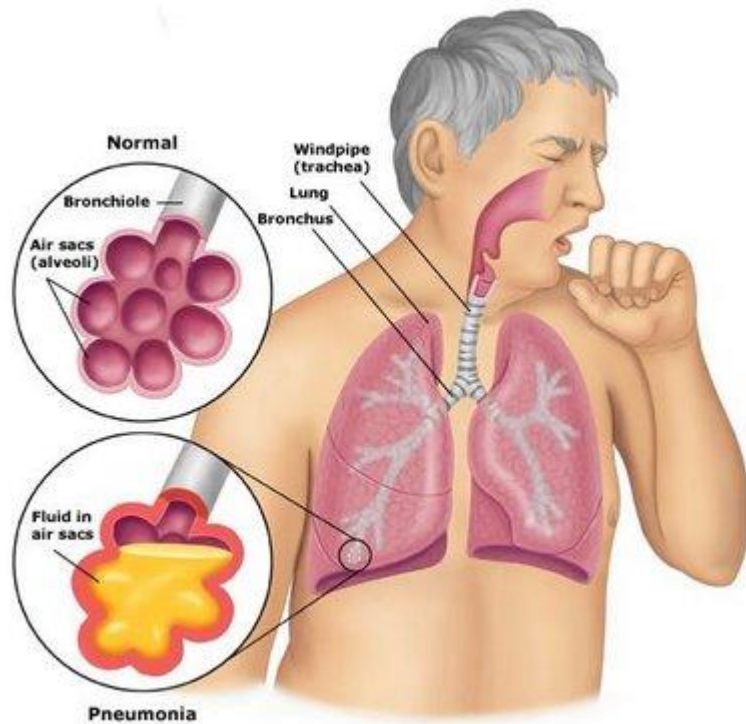




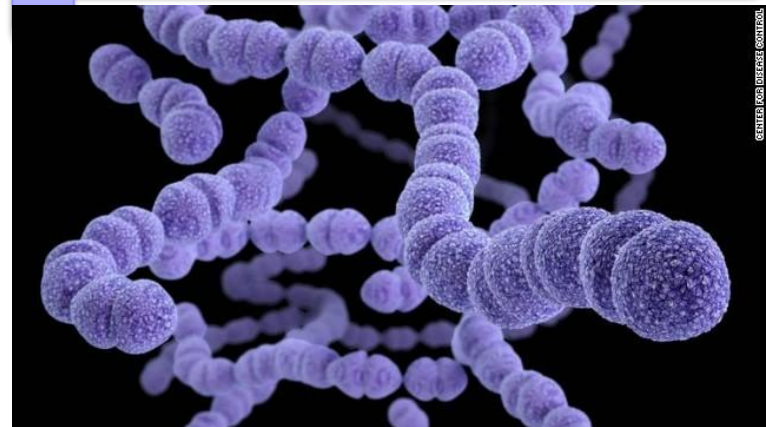
Microscopy : foci of inflammatory condensation centered by a bronchiole with acute bronchiolitis (suppurative exudate rich in neutrophils in the lumen, foci of ulceration of the epithelium and parietal inflammation). The alveolar lumens surrounding the bronchia are filled with neutrophils ("leukocytic alveolitis"). Capillaries in the alveolar walls show congestion. Inflammatory foci are separated by normal, aerated parenchyma.








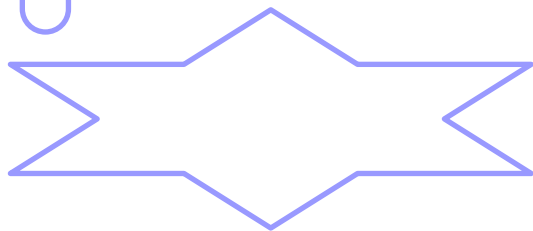
Lobar pneumonia is an acute exudative inflammation of an entire pulmonary lobe, produced in 95 % of cases by *Streptococcus pneumoniae* (pneumococci).



If not treated, lobar pneumonia evolves in four stages. Common to all stages is the enlargement of the affected lobe with loss of its spongy appearance.



Modal verbs (can, could, must, should, ought to, may, might, will, would, shall) are modal auxiliary verbs that express ability, necessity, obligation, duty, request, permission, advice, desire, probability, possibility, etc. Modal verbs express the speaker's attitude to the action indicated by the main verb.



- She can drive ( Она может водить машину)
- I must go ( я должен идти)
- You should call him (вам следует позвонить ему)
- You may stay here ( вы можете остаться здесь)
- I would like to see her (я хотел бы увидеть ее)
- He must be at the tennis club now (он, наверное, в теннисном клубе сейчас)

## **WE USE THE MODAL VERBS:**

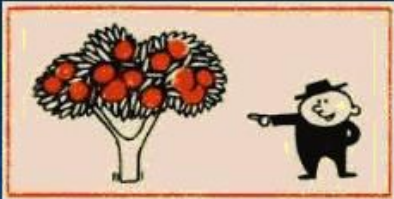

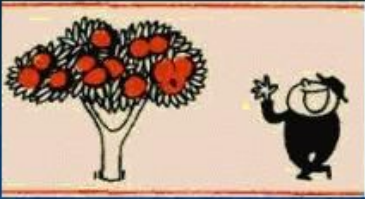


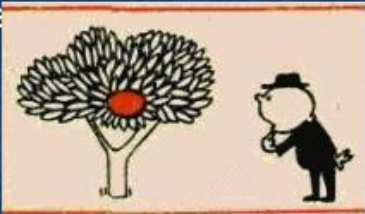



- **MUST**
- **MAY/MIGHT**
- **CAN/COULD**
- **CAN'T/COULDN'T**

**HAVE+ V 3/ V ED**

**TO SAY IF SOMETHING WAS ...**



"Can" is one of the most commonly used modal verbs in English. It can be used to express ability or opportunity, to request or offer permission, and to show possibility or impossibility.

	PRESENT	
		
I <b>can</b> pick a lot of apples off this tree.		I <b>am able to</b> pick a lot of apples off this tree.
		
I <b>could</b> pick a lot of apples off this tree last year.		I <b>was able to</b> pick a lot of apples off this tree last year.
		
		I think I <b>will be able to</b> pick a lot of apples off this tree next year.





Pneumonia **can** develop gradually

The patient's breathing **can** become more frequent

Cyanosis **can be** associated with the accompanying bronchitis, decrease in the respiratory surface and occlusion of numerous bronchioles and alveoli.

The patient **can** complain of the pain in the chest.

The blood analysis **can** reveal leukocytosis.

The urine **can** contain a small amount of protein and erythrocytes.

The X-ray examination of the lungs **can** reveal numerous foci of inflammation of various size, irregular form and different intensity.

The liver and spleen were **can** enlarged.

Patient's condition didn't **can** improve





Thank you for your  
attention!