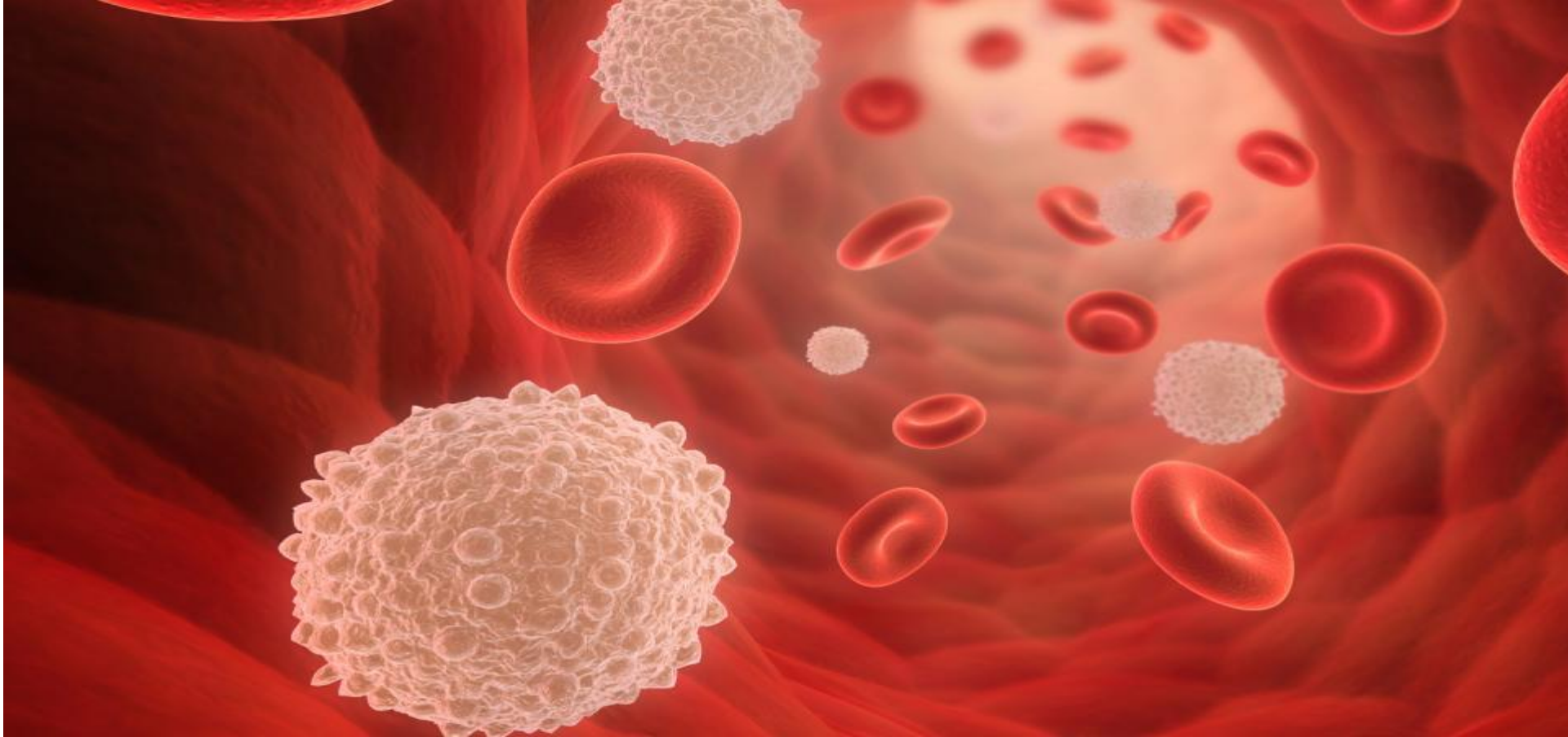
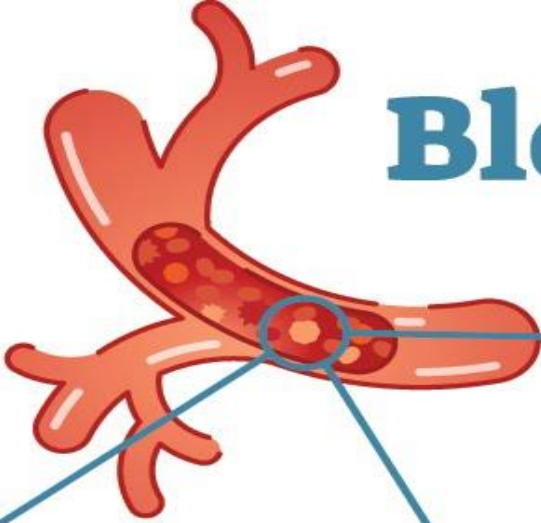


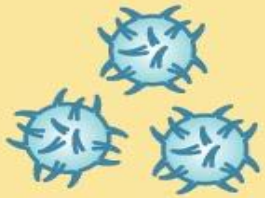
WHAT DO YOU SEE ON THE PICTURE?



Blood Cells



Platelets



Thrombocytes

Red Blood Cells



Erythrocytes

White Blood Cells



Basophil



Neutrophil



Eosinophil



Monocyte



Lymphocytes

Pre-video questions

1-What is plasma?

2-What types of blood cells you know?

3-What is the function of blood?

Functions of Red Blood Cells, White Blood Cells & Platelets



Post-video questions

1-Which cells carry oxygen?

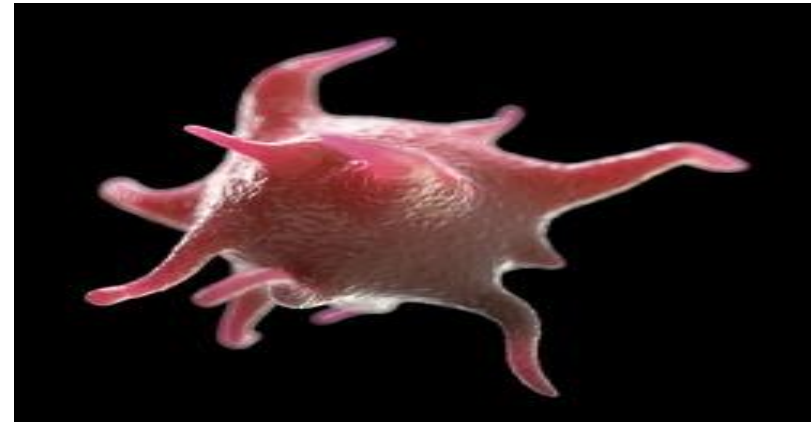
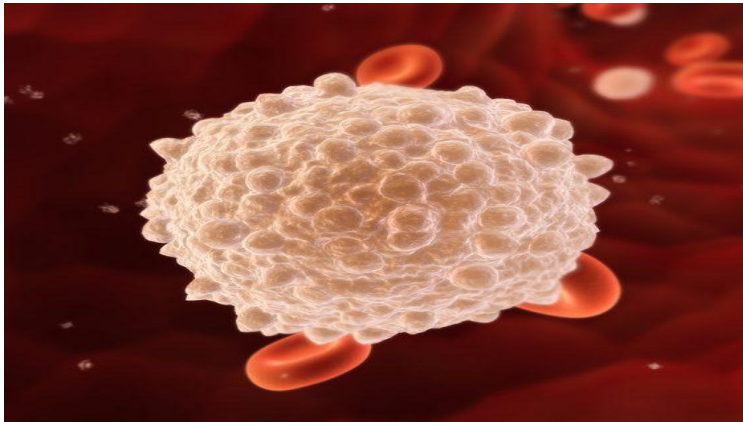
2-What is the function of white blood cells ?

3-Which blood cells you didn't see on video?

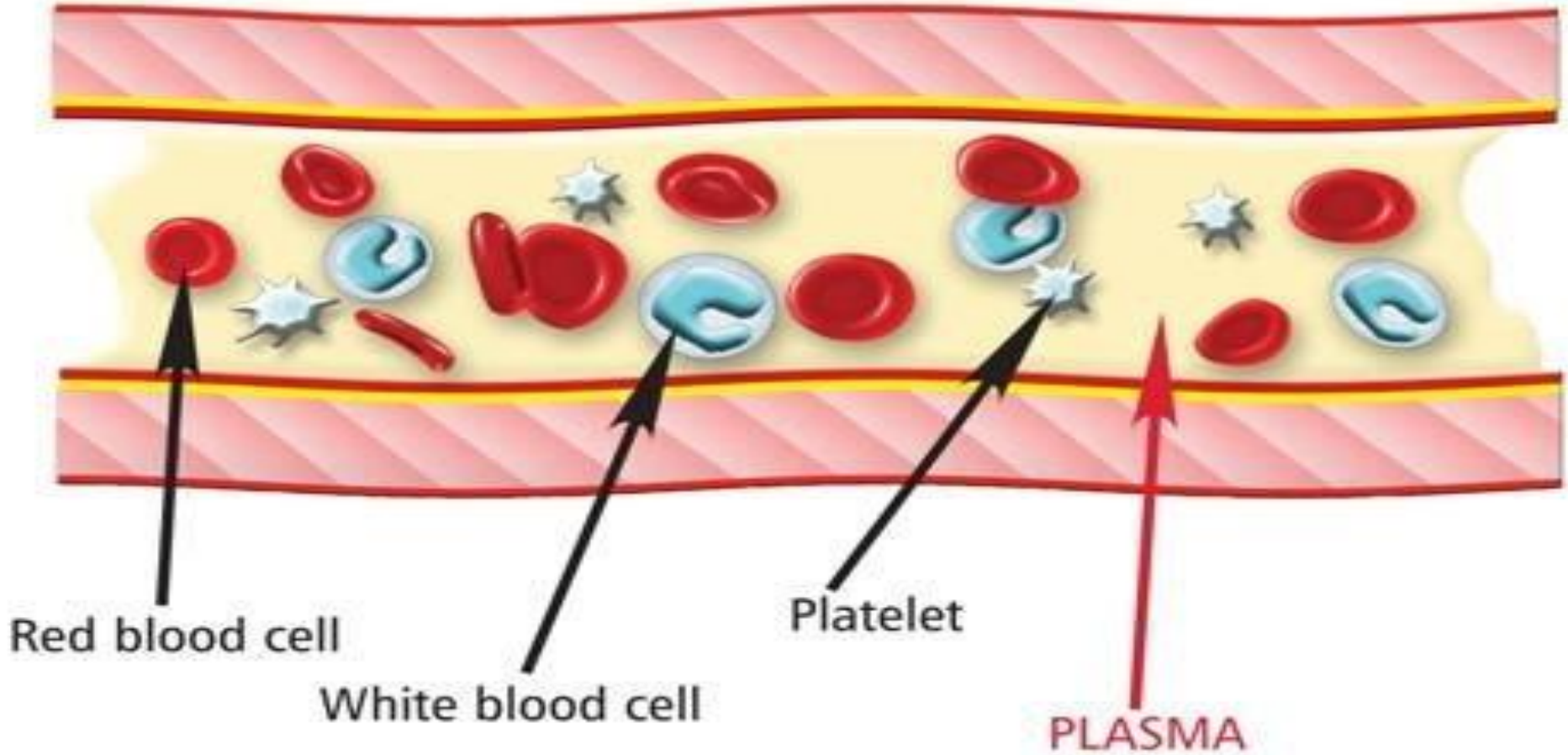


Aim:

Investigate features of blood cells of different organisms



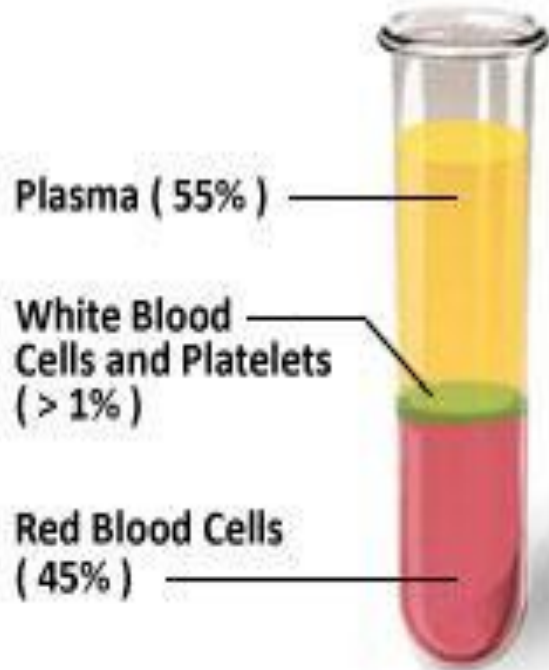
Blood vessel



Plasma-liquid part of blood

plasma transports:

- soluble food molecules
- waste products
- hormones
- antibodies



Erythrocytes

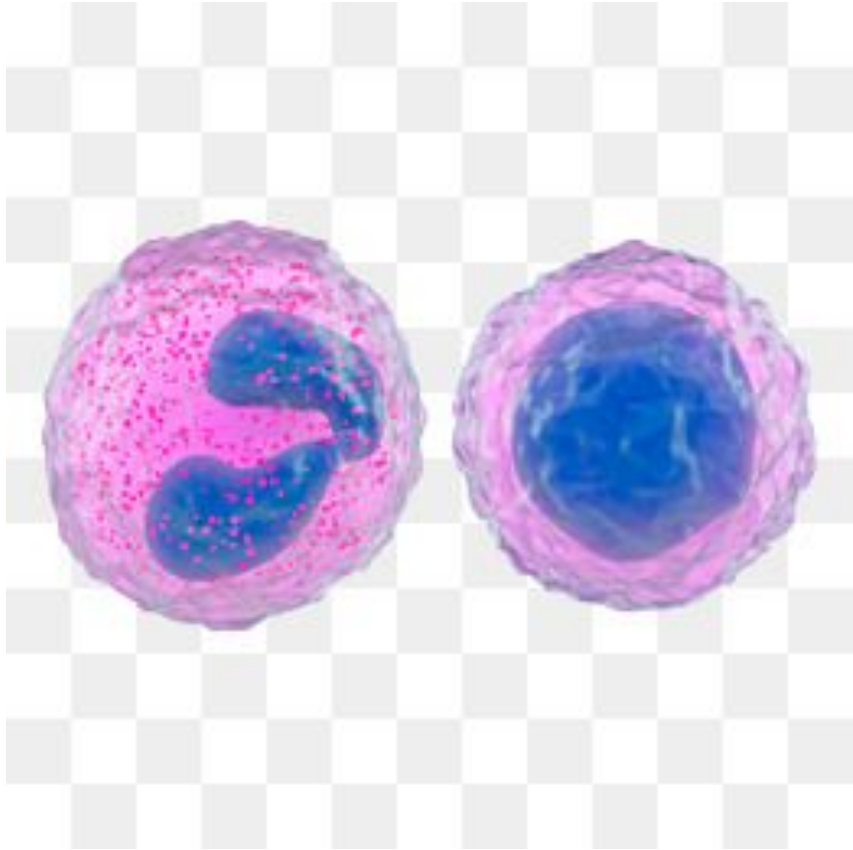
Red blood cells (erythrocytes)

5 million cells in 1 mm³ (ml)

- contain hemoglobin
- transport oxygen
- transport CO₂
- has round shape

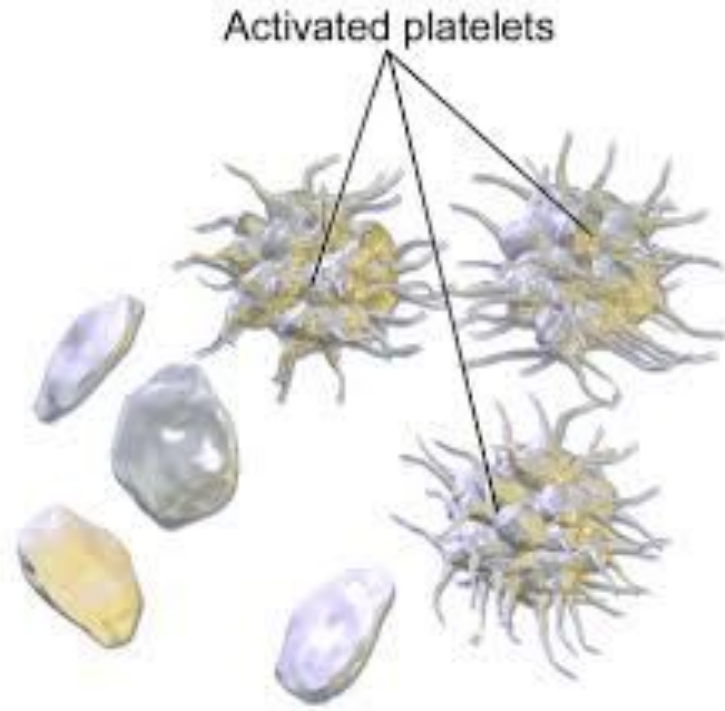


Leukocytes



- Have irregular shape
- Protect from pathogens
- 4500-11000 in 1 mm³

Platelets (Trombocytes)



- Help to stop blood bleeding by blood clotting
- 250000 in 1mm^3