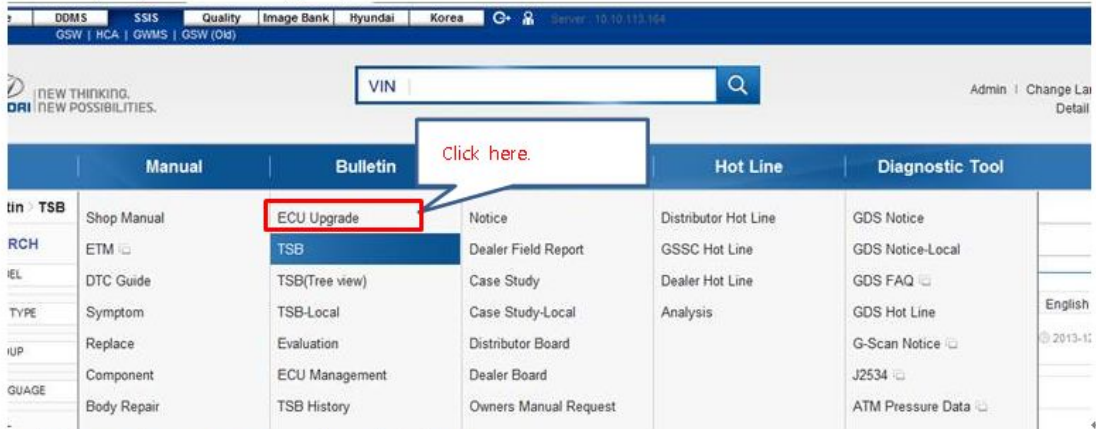


Before the next Internet Update, you can update ECU event on GDS via Manual Update.

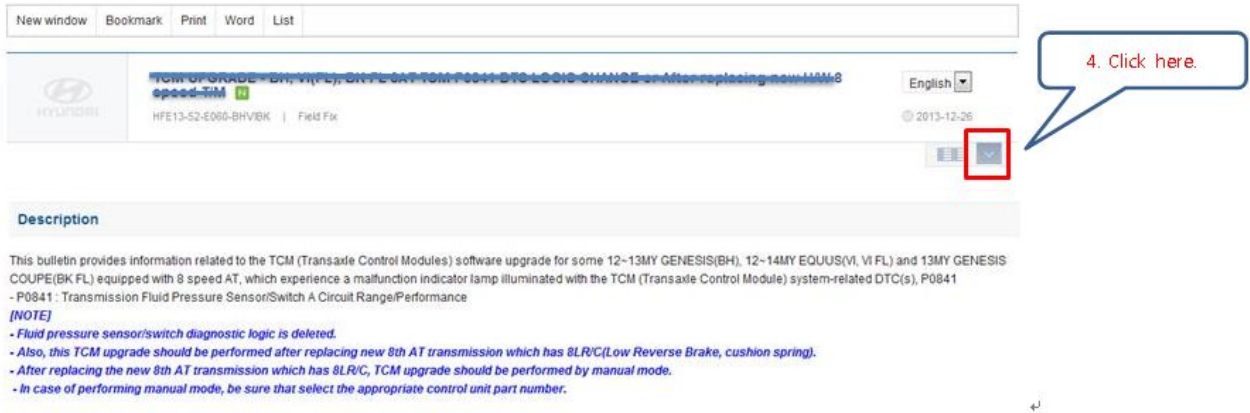
For your information, if you want to perform ECU upgrade now, please follow the steps below.

(**GSW ID**, which you use when you download the ECU event file, and **GDS ID**, which you use when perform the ECU upgrade, **must be identical**.)

1. Log in GSW.
2. Go to the path[SSIS-GSW-ECU Upgrade]



3. Find the event that you want to update and click on it.
4. Click the button below to open the detail information.



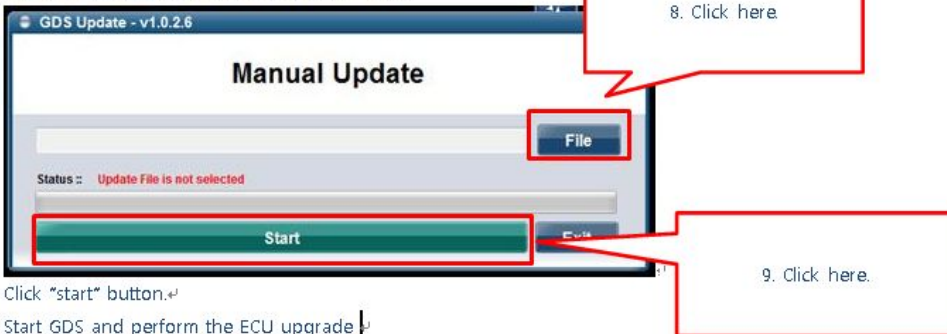
5. You can see the ECU upgrade file when you open the window.



6. Download ECU file that you need.
7. Click "Manual Update" button.



8. Find the ECU upgrade file that you download.



9. Click "start" button.
10. Start GDS and perform the ECU upgrade