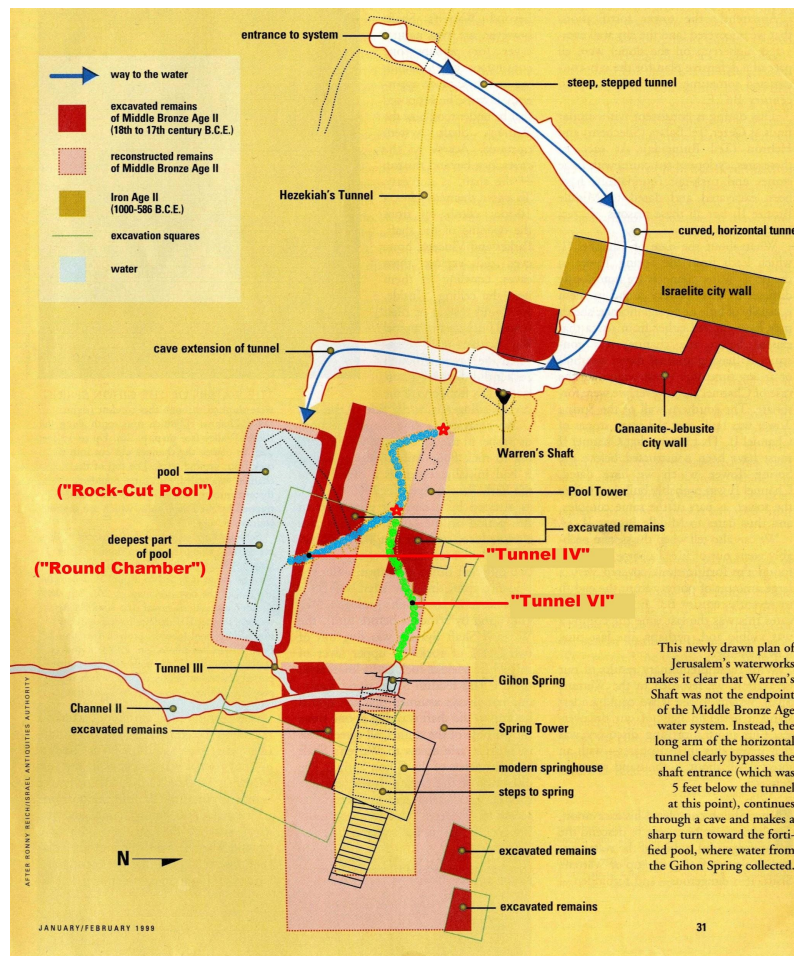




# Храм и Воды

«присутствие Храма (...) как считалось, подавляет и контролирует подземные воды, которые представляют угрозу для творения, и в то же самое время из Эдемского сада текут иные воды в четыре реки, несущие жизнь творению». M.Barker The Gate of Heaven History and Symbolism of Jerusalem Temple. 1991. P.57.

# Вода в городе Давида



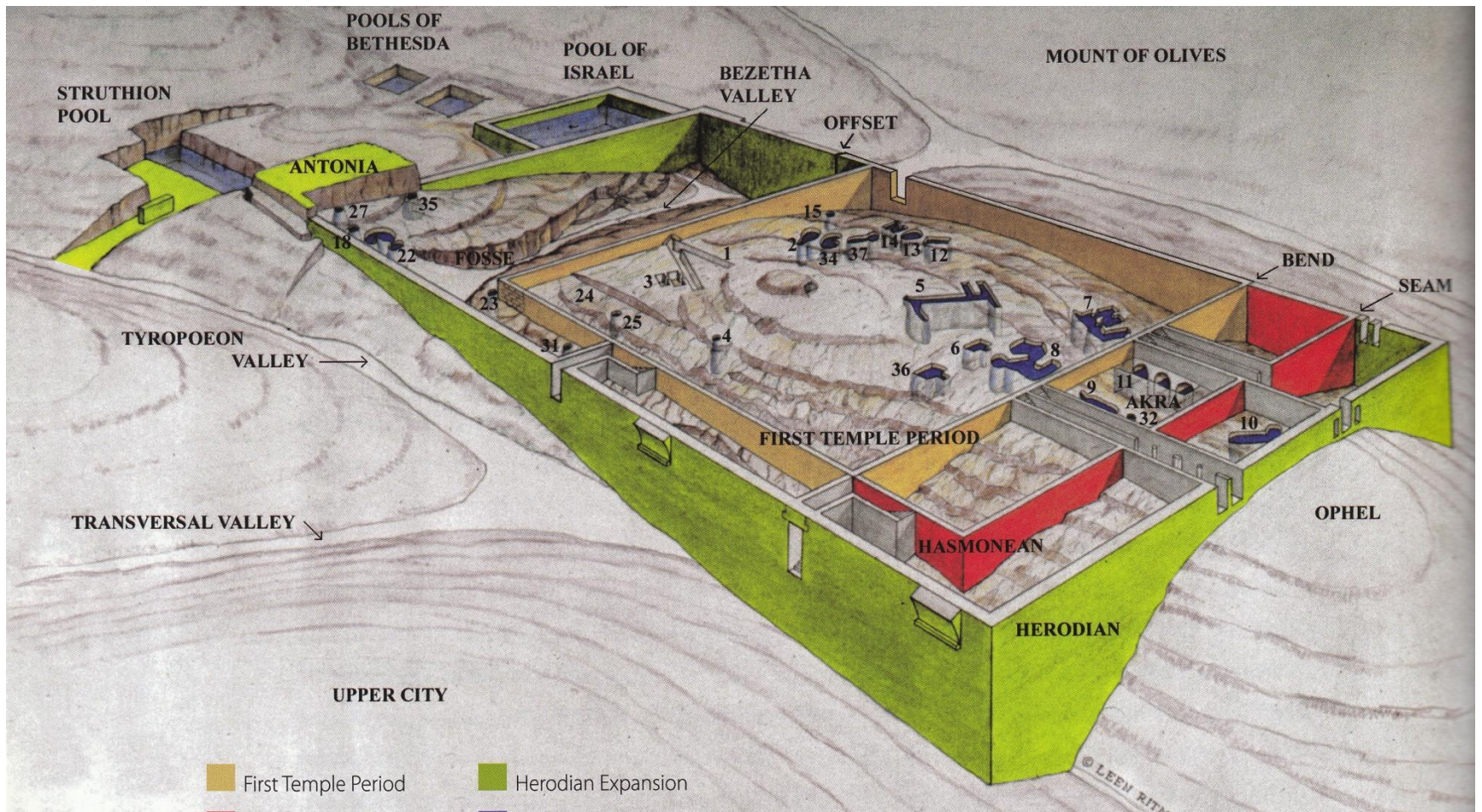
# Силоам



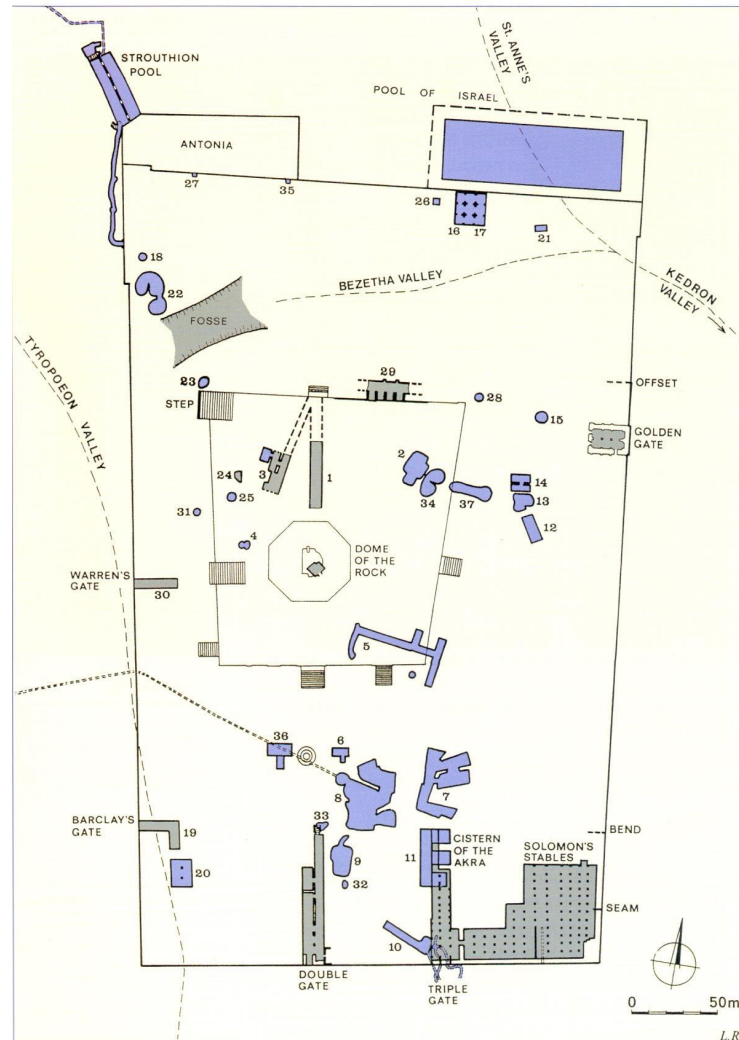
# Храмовая гора



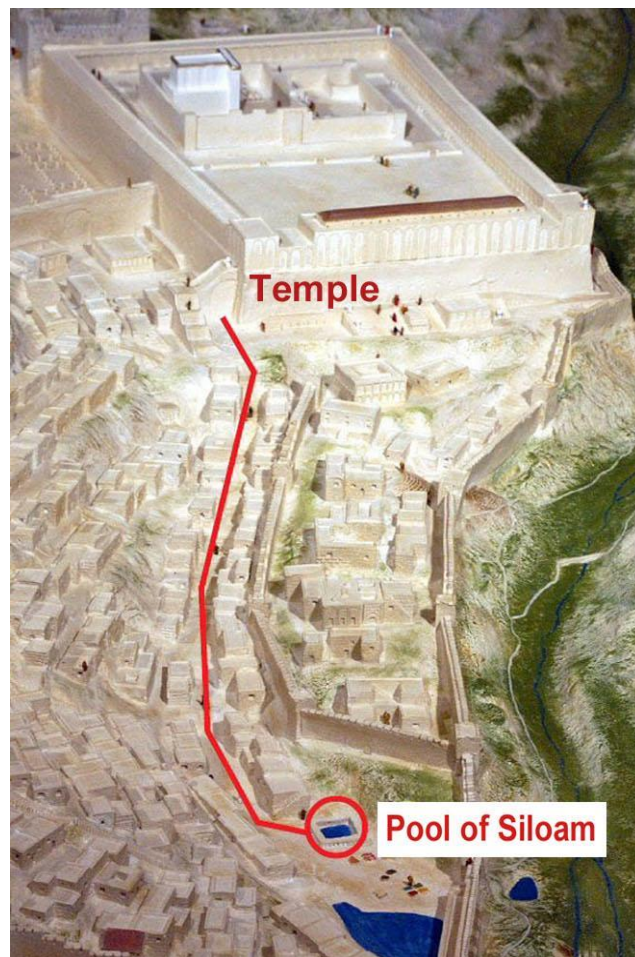
# Цистерны



# Цистерны под Храмовой Горой



# Путь ВОДЫ





# ЦИСТЕРНЫ



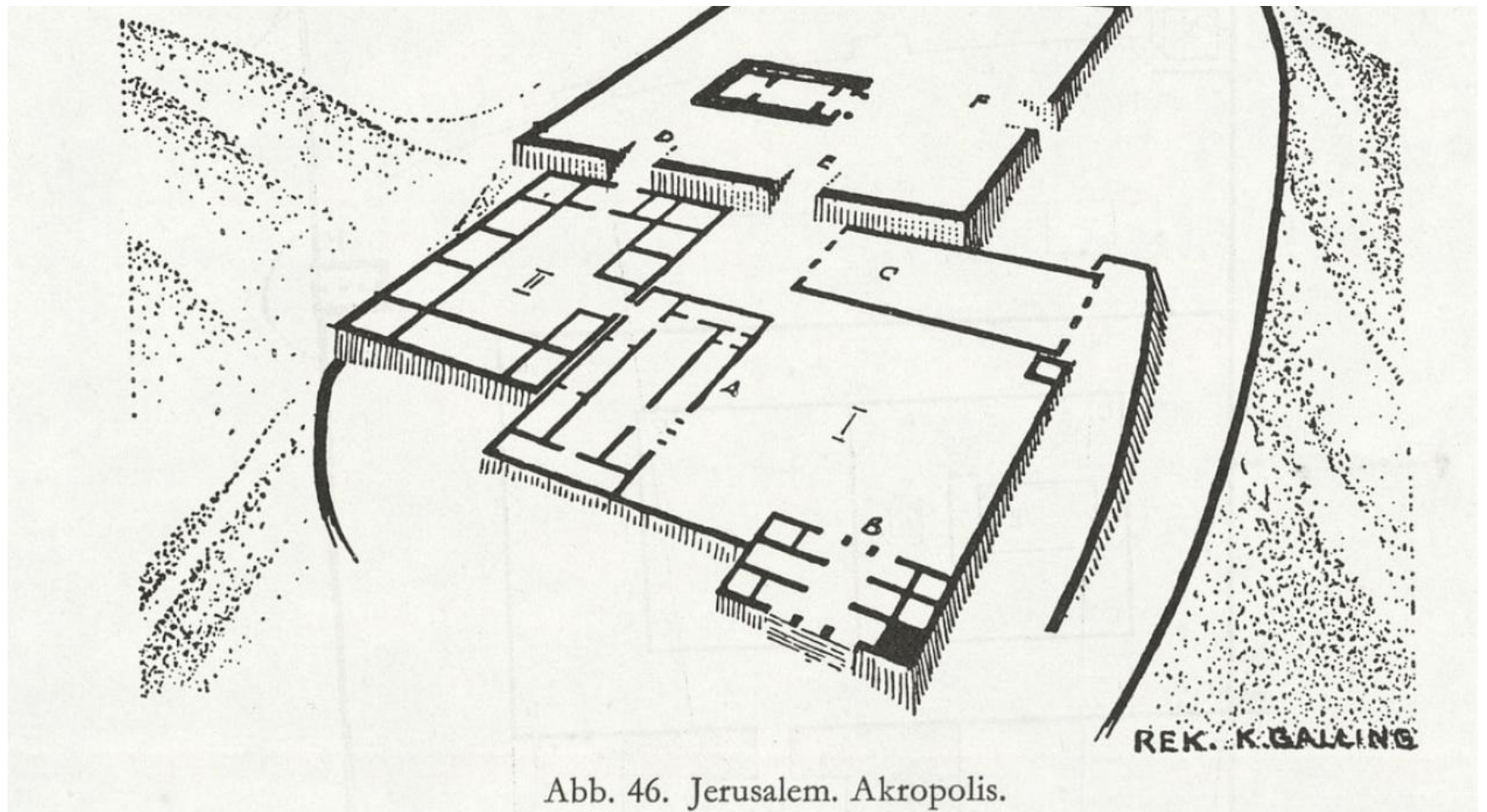
# Первый Храм 957-586 до Н.Э.



# Дворец

- The Palace stood over against (or opposite) the temple. They were so close together that a shout in the Temple court could be heard by the Queen in the Palace. (2kings 11:12,13) We also know from scripture that the Palace was built on the Ophel, outside, and up hill, from the City of David, and down hill from the Temple

# Иерусалим Акрополь



# Дом из Кедр

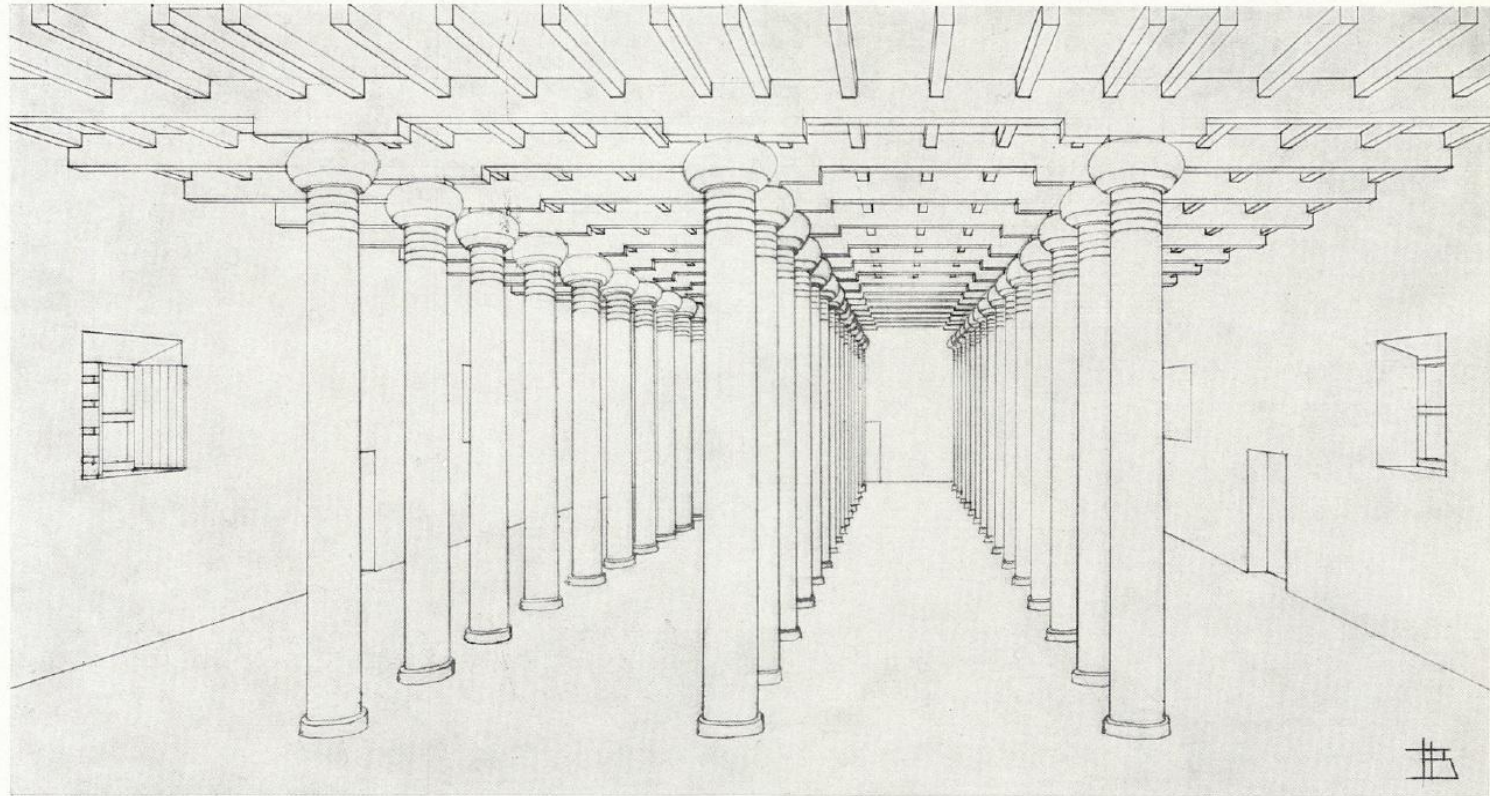


Abb. 38. Jerusalem. Libanonwaldhaus.

(Rekonstr. Th. A. BUSINK, 1967).

# Богазгей Зал аудиенций

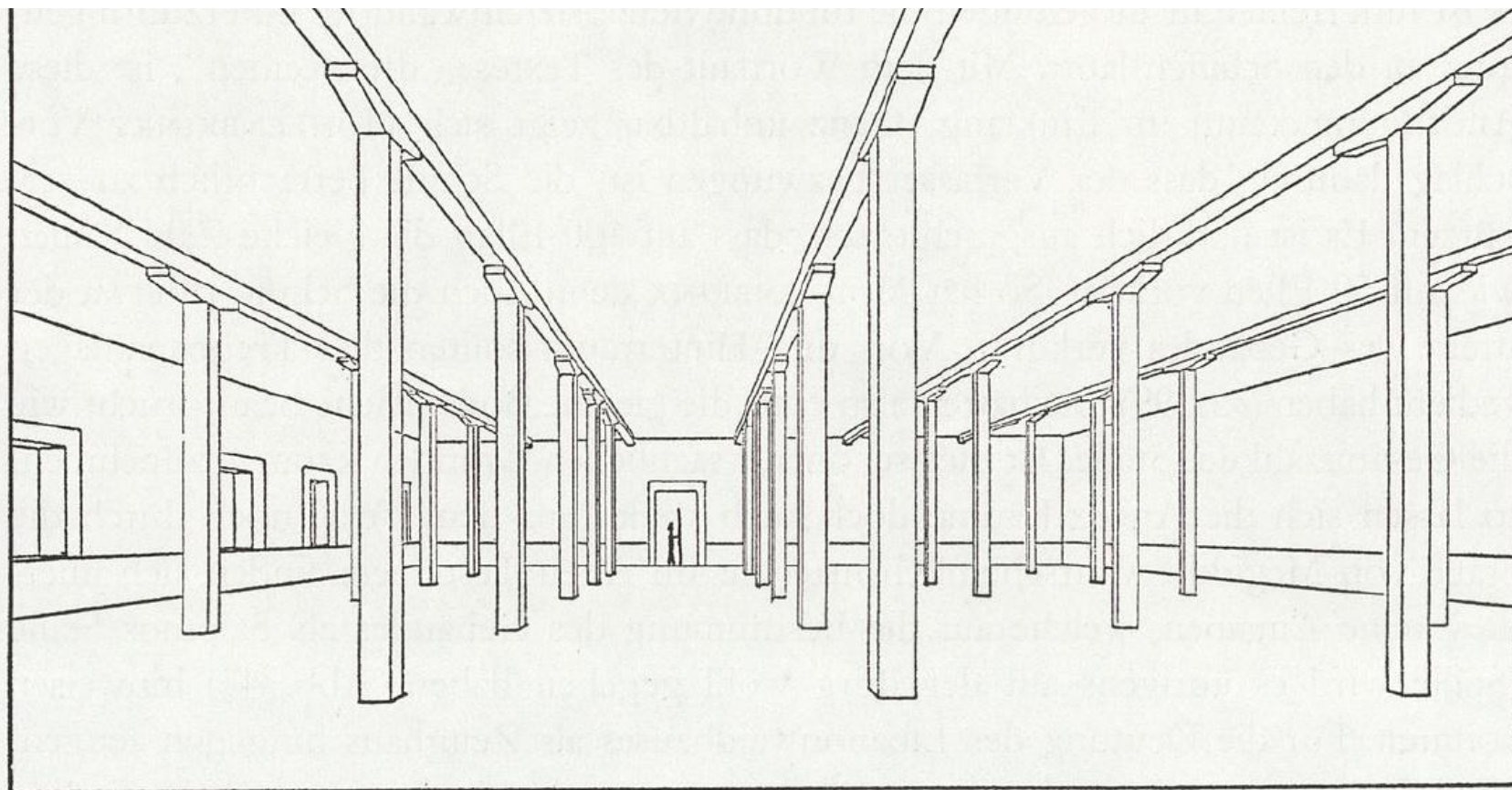
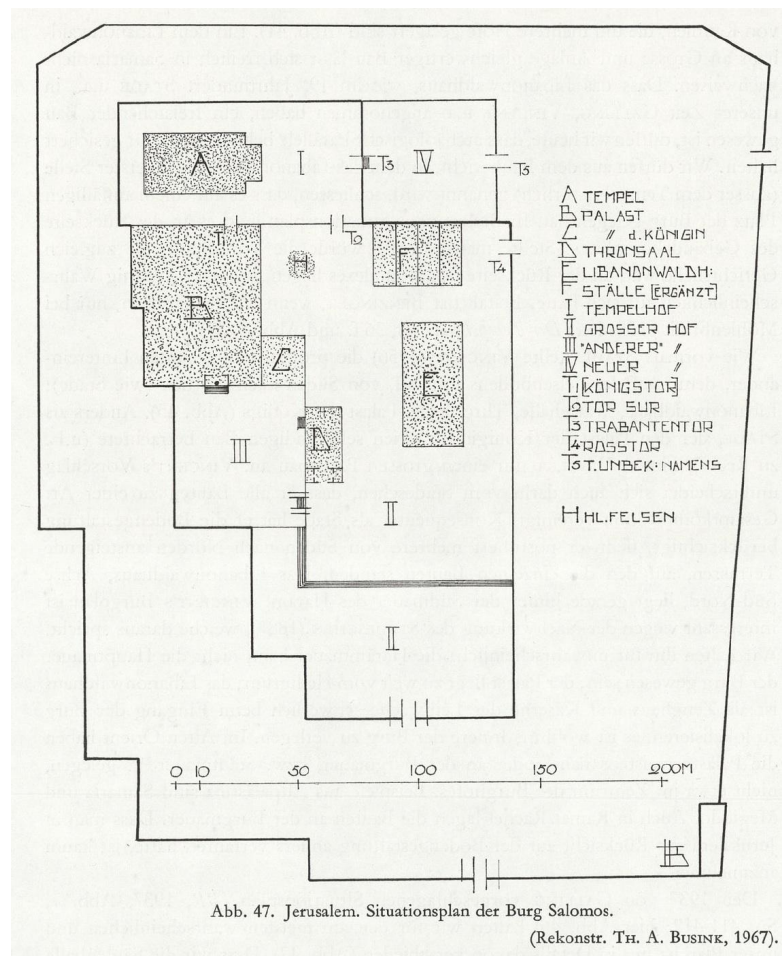


Abb. 40. Boğazköy. Audienzsaal auf Büyükkale.

# Соломонов дворец. План



The Green line represents Solomon's Temple complex.

The Blue line represents the Herodian Temple complex. (called the southern lower court by Josephus because it was built on the lower part of the hill. This included Herod's Royal Stoa)

The Red line is the recent dig of Eilat Mazar revealing a small portion of the Solomon royal complex. The light red represents a general Solomonic complex area.

