

# Lecture 2

## Hardware Fundamentals



# Objectives

A large, empty rounded rectangular box with a black border, intended for writing the first objective.A large, empty rounded rectangular box with a black border, intended for writing the second objective.A large, empty rounded rectangular box with a black border, intended for writing the third objective.A large, empty rounded rectangular box with a black border, intended for writing the fourth objective.



# Hardware Fundamentals

# Network Hardware

## Network adapter

- Physical layer (Layer 1)
- Data Link layer (Layer 2)

## Repeater

- Physical layer (Layer 1)

## Hub

- Physical layer (Layer 1)

## Bridge

- Data Link layer (Layer 2)

## Switch

- Operate at the Layer 2
- Support Layer 3 functionality

# Network Hardware

## **Router**

- **Operates at the Network layer (Layer 3)**

## **Access point**

- **Acts as a bridge**

## **Wireless router**

- **Combines bridge, router, switch, and AP functionality**

# Network Adapter

**can communicate on a network**

**networking medium**      **physical access to a**  
**addresses**      **MAC**

# Types of Network Adapter

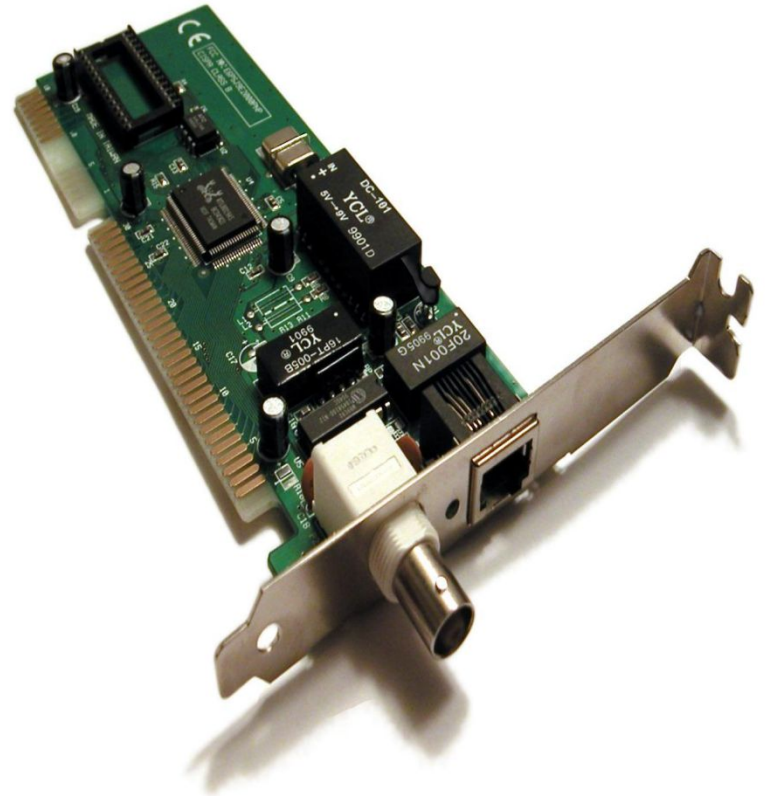
**wired and  
wireless**

- **Wired Network Adapter**
- **Wireless Network Adapter**
- **Network USB Adapter**

# Wired Network Adapter

**for a wired connection**

**apply the  
proper drivers upon  
detection of the device**





# Wireless Network Adapter

**connects to a  
radio-based computer network.**



# Network USB Adapter

**USB wireless adapter**

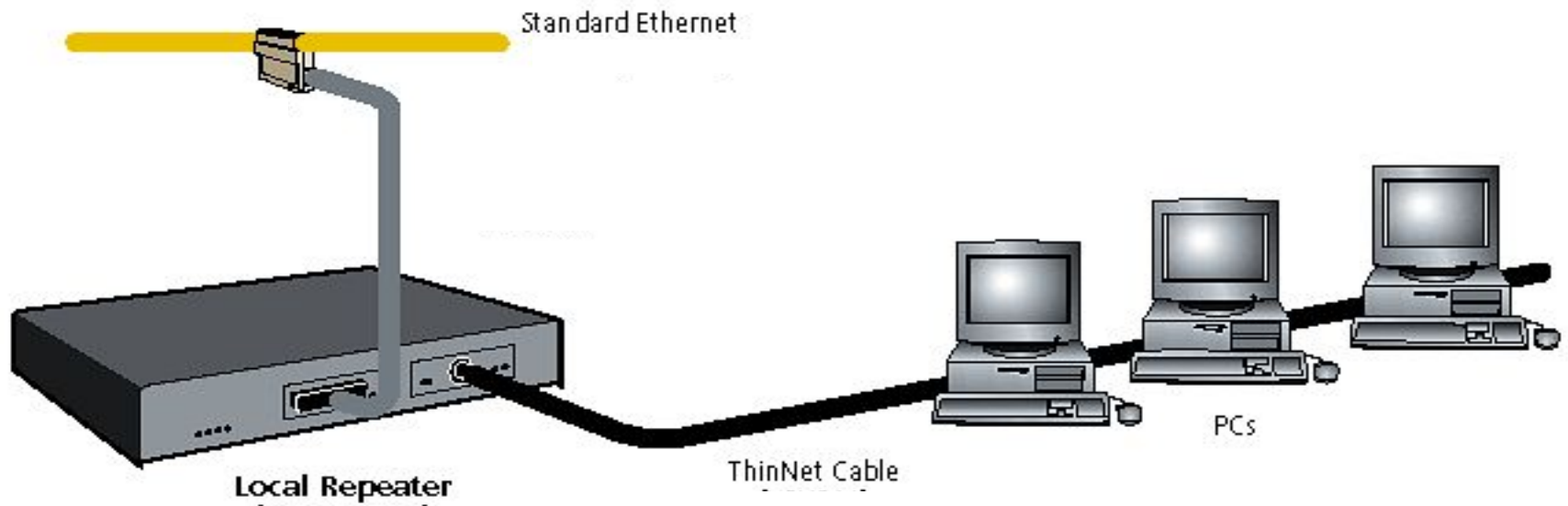


# Adapter MAC address

**Media Access Control (MAC)  
address**

# Repeater

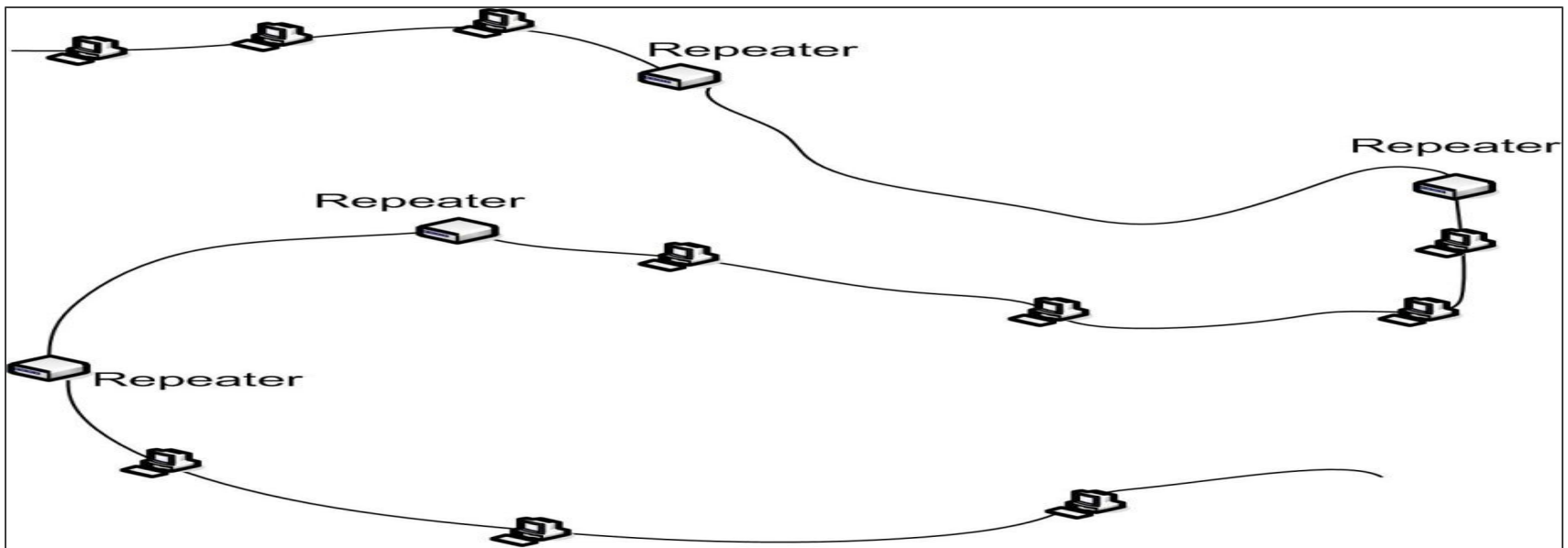
simply an amplifier



# Repeater use

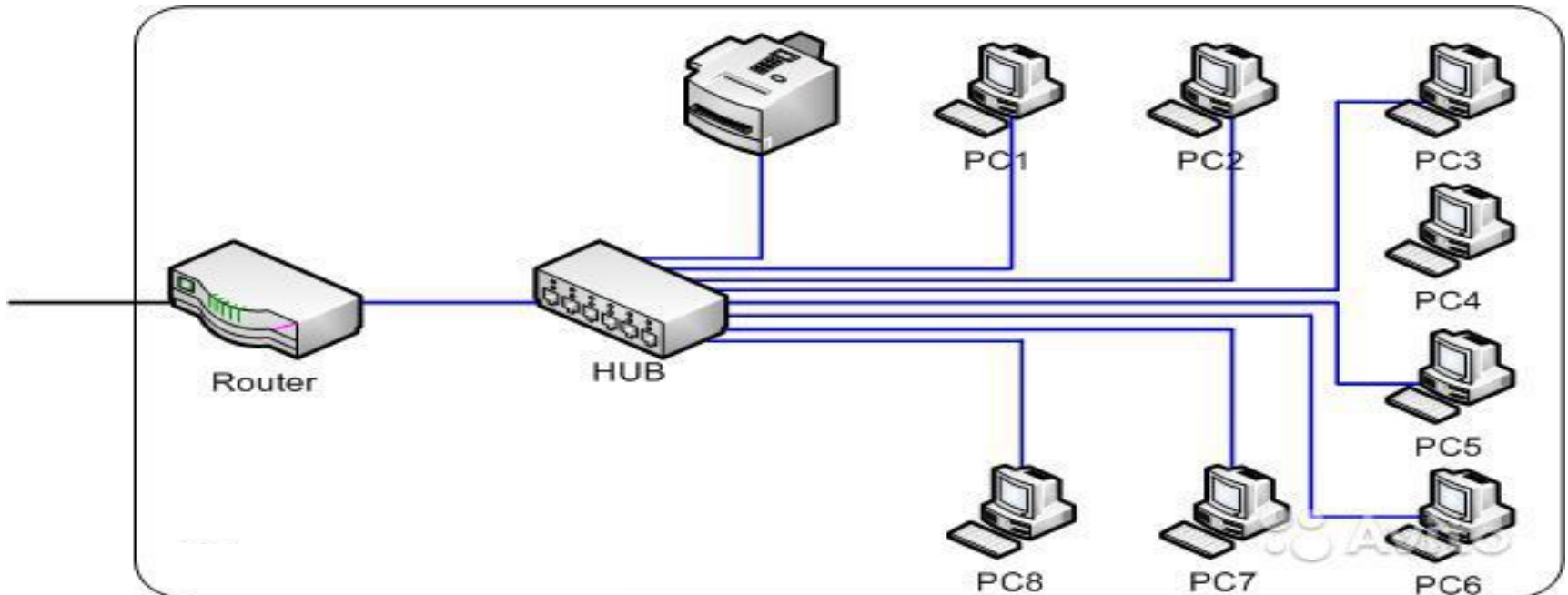
extend the maximum length

5-4-3 rule.

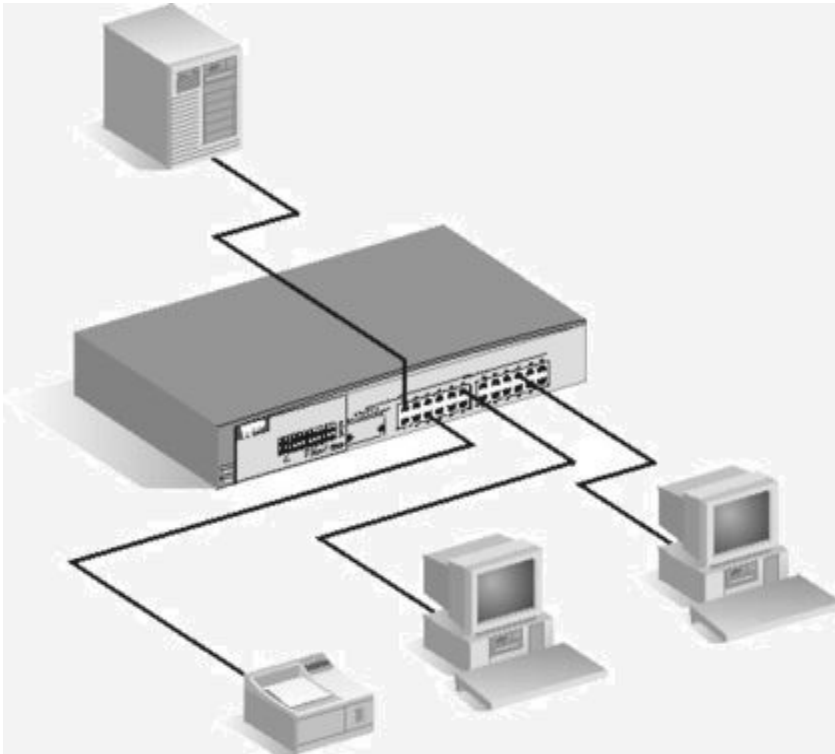


# Hub

for connecting  
together  
network segment. single



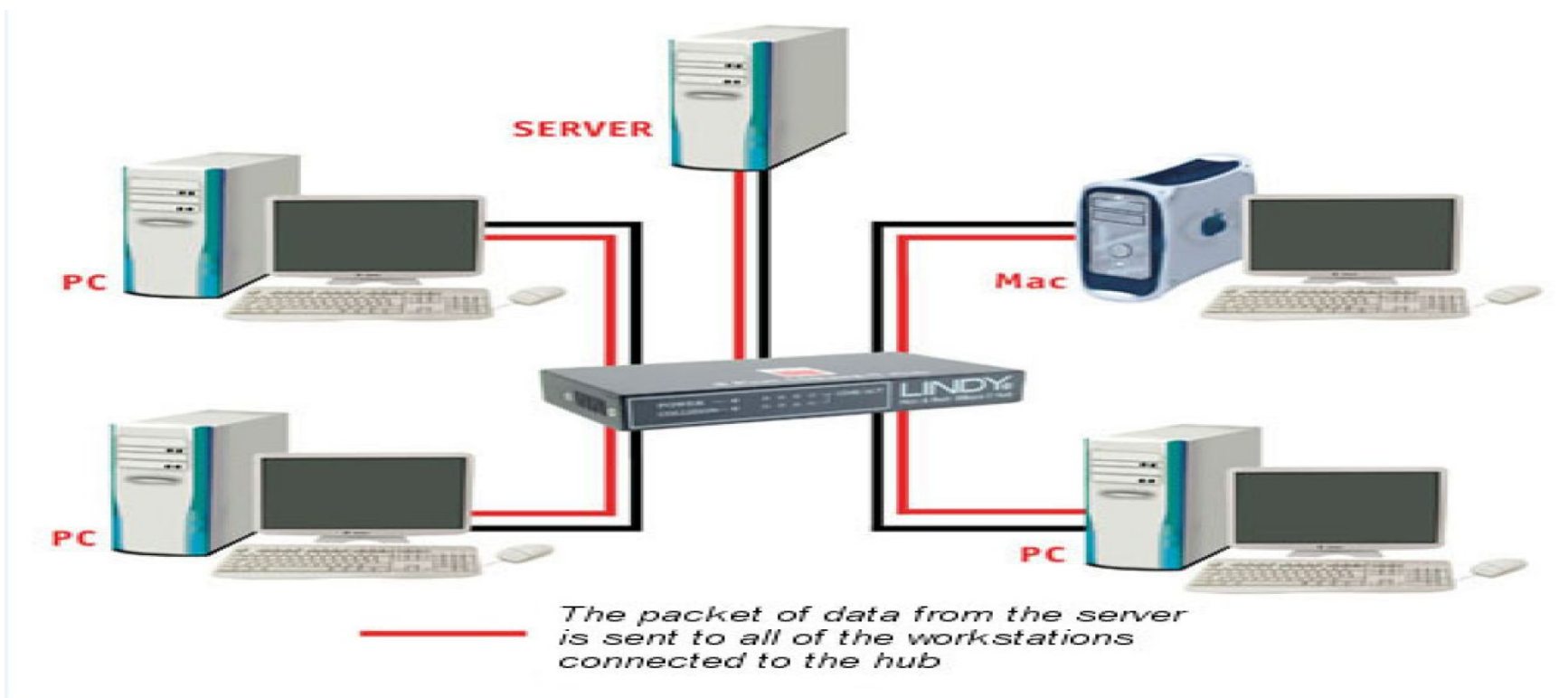
# Hub use



**electronically**

**do not manage**

# Hub and packet collisions



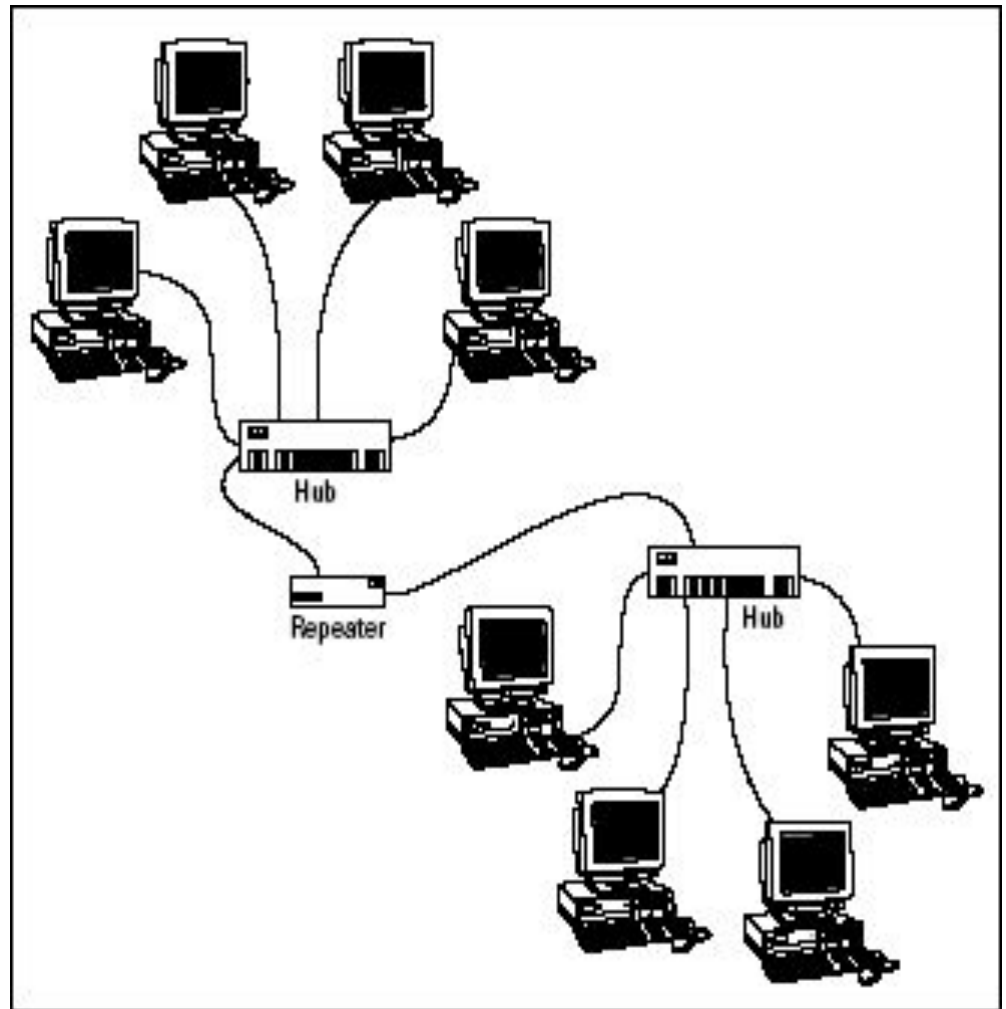
**packet collisions result**



# Connected Hubs

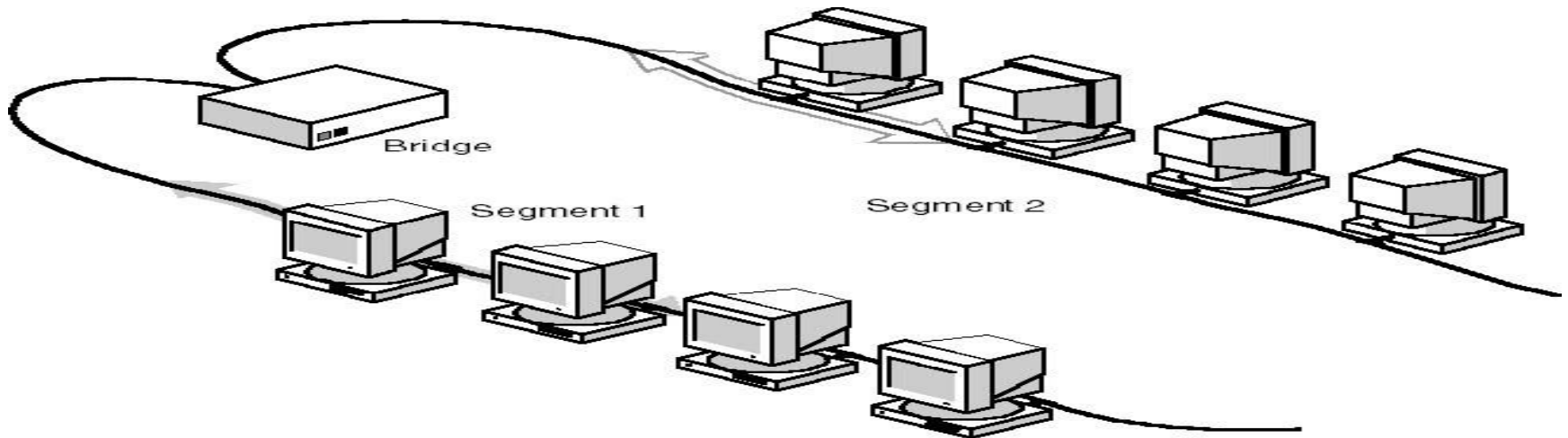
**uplink port**

**Uplink port**



# Bridge

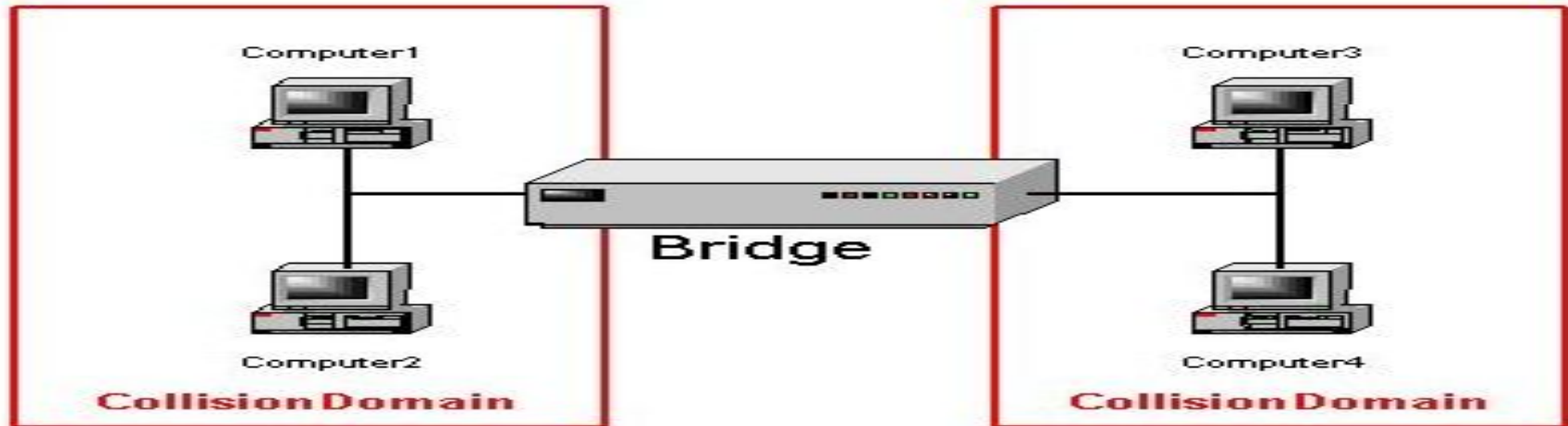
**connects multiple network segments (networks)**



**based on MAC addresses**  
**Layer 2 device**

# Bridge and collision domains

**Its job is simply to help ensure that the "scope" of collisions was made smaller**



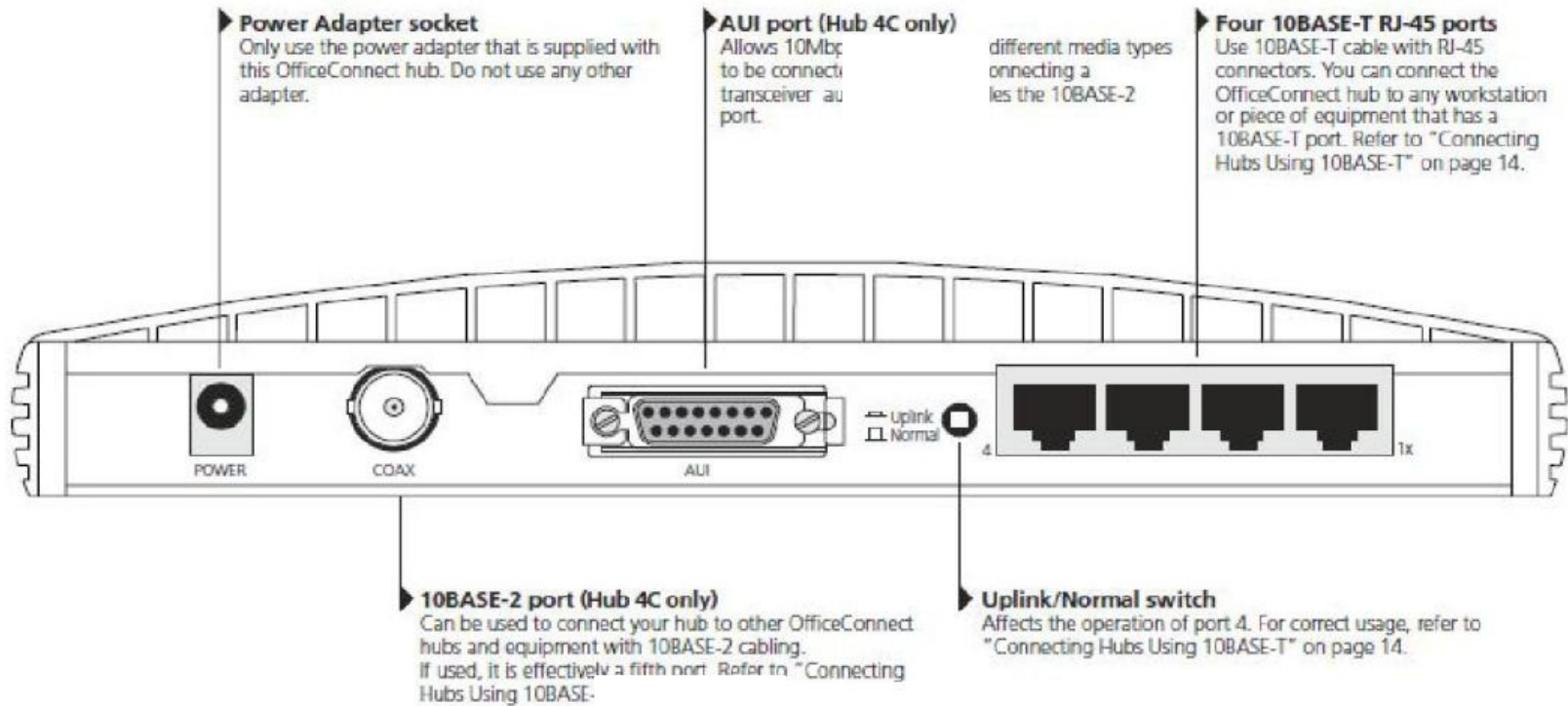
**In the diagram**

# Bridge and media types

**maybe one  
a wired one and the other a wireless one**

**connections  
between different media types of network**

# Bridge Sample

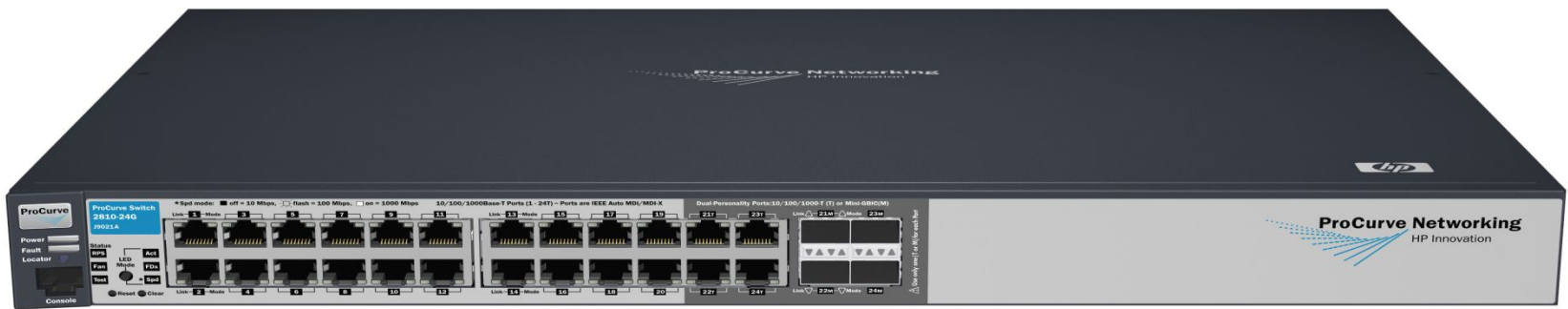


**10Base2, 10Base5**  
**10Base-T**

# Switch

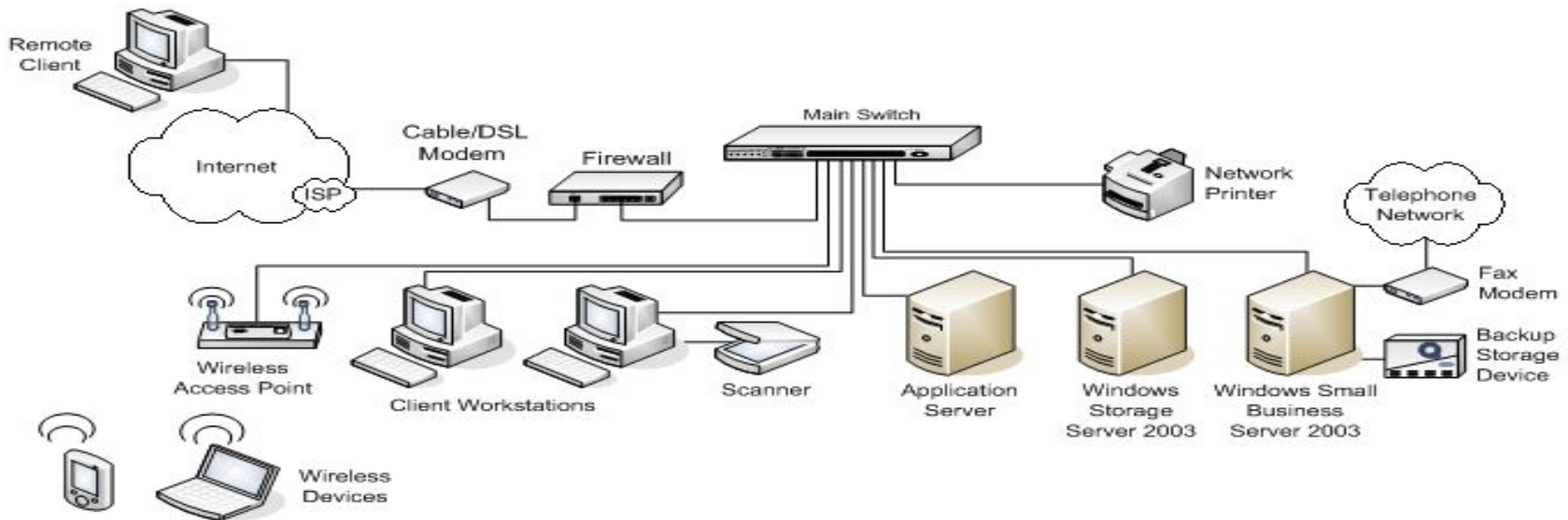
**that connects devices together on a computer network**

- **Switch provide:**
- **Connect network devices**
- **Network segmentation (VLANs)**
- **Remote management**
- **Communication security**



# Connect network devices

**multiport bridge**

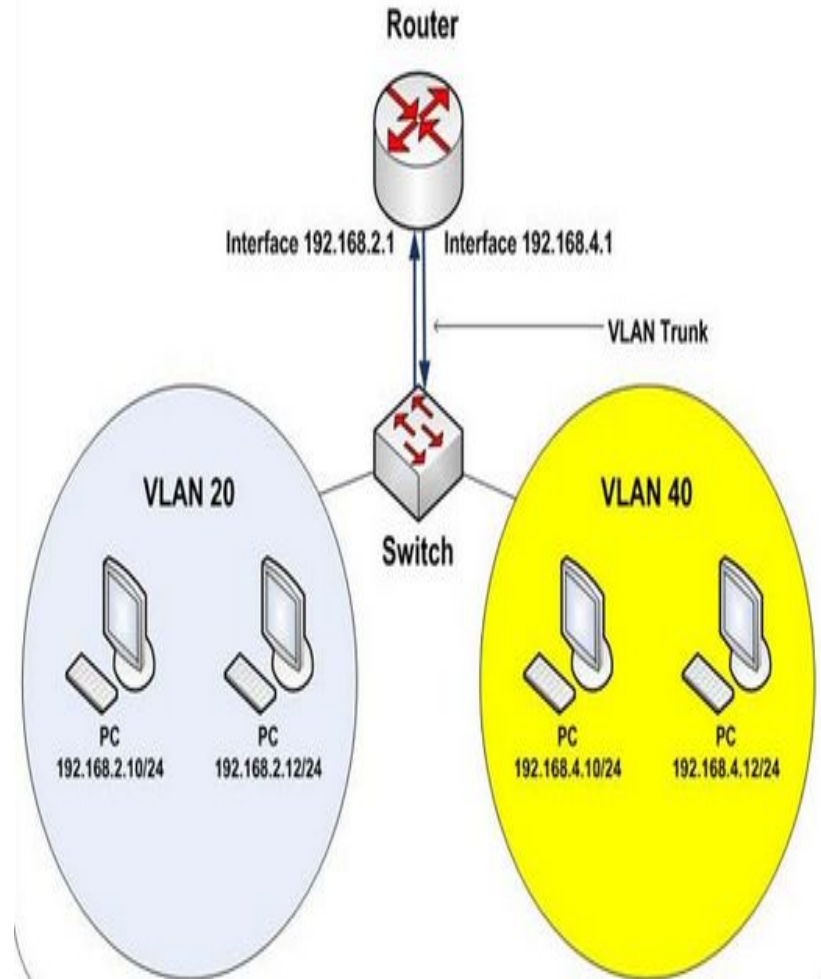


**based on the MAC address**

# Network segmentation (VLANs)

**VLANs provide a method for segmenting**

**traffic between VLANs is blocked unless the VLANs are connected by a router**





# Switch and remote management

**management**

**support remote**

**communication security**

**high level of**

# Router

**between computer networks**

**forwards data packets**



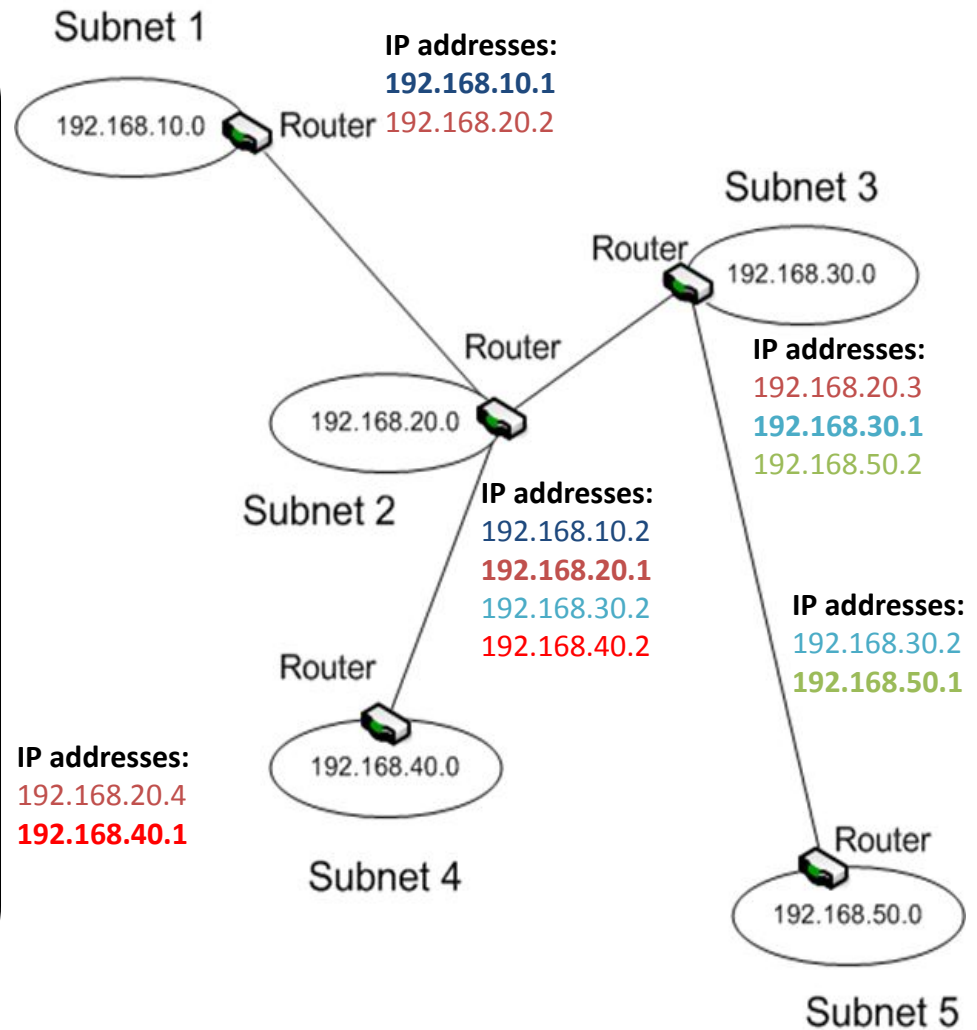
**address information**

**router reads the**

# Routed Network

**Each router will have at least two ports**

**configured with a different network address**

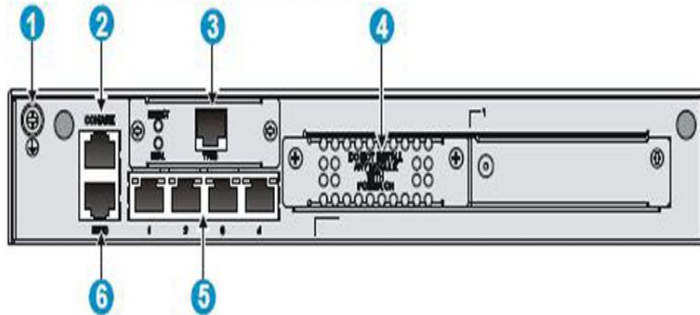


# Sample Router



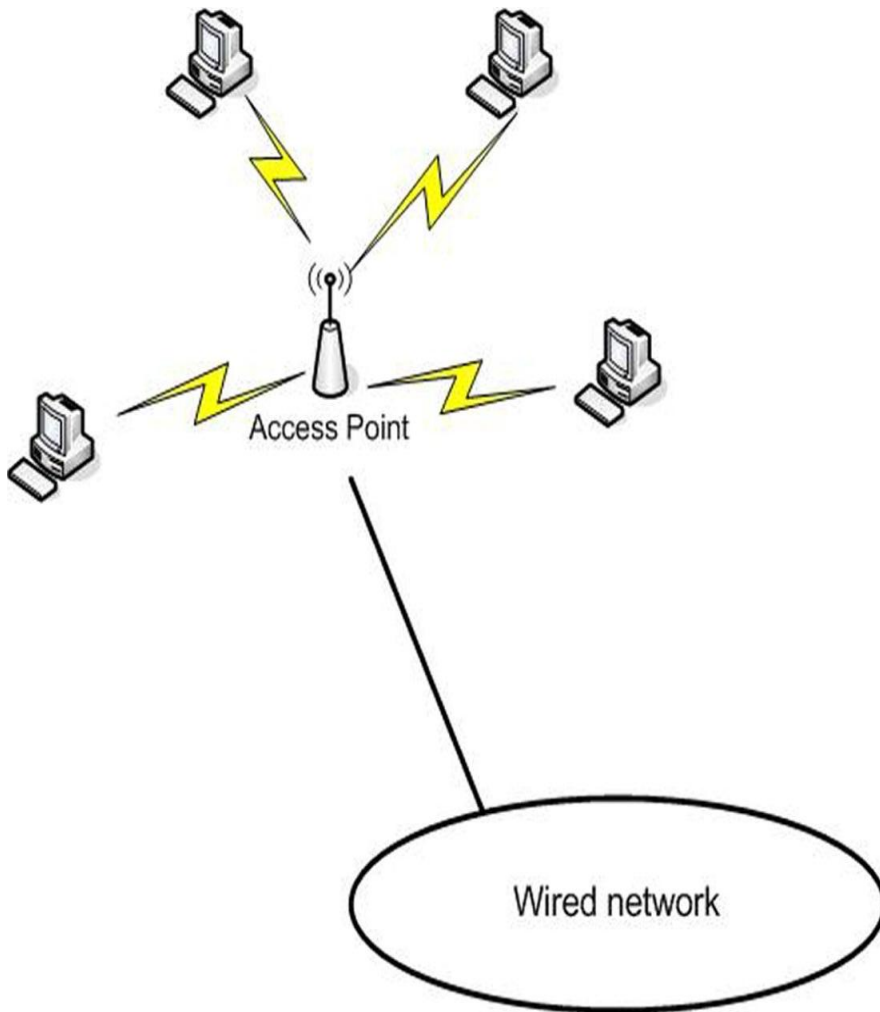
- |                  |                      |              |
|------------------|----------------------|--------------|
| (1) Power switch | (2) Power receptacle | (3) USB port |
| (4) Reset button |                      |              |

Figure



- |                     |                                       |                            |
|---------------------|---------------------------------------|----------------------------|
| (1) Grounding screw | (2) Console/AUX port                  | (3) T1 port TPRIO          |
| (4) SIC/DSIC slot   | (5) Ethernet LAN ports (ETH1 to ETH4) | (6) Ethernet WAN port ETH0 |

# Access Point



**Access Point (AP)**

**acts as a central  
connection point for  
wireless devices**

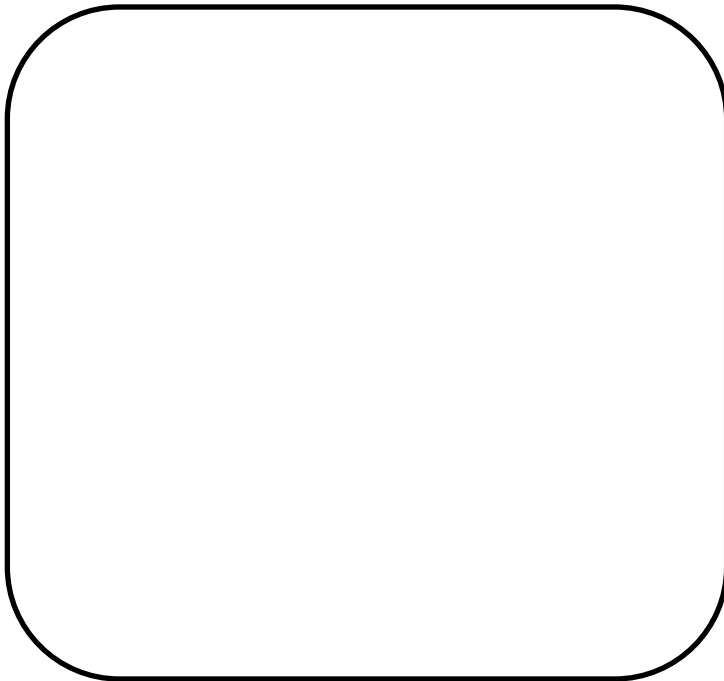
# MSM460 Front View

**have one or  
more internal  
radios**



**support both a web-based  
management tool and a CLI**

# MSM460 Back View



**does not  
have a power connector**

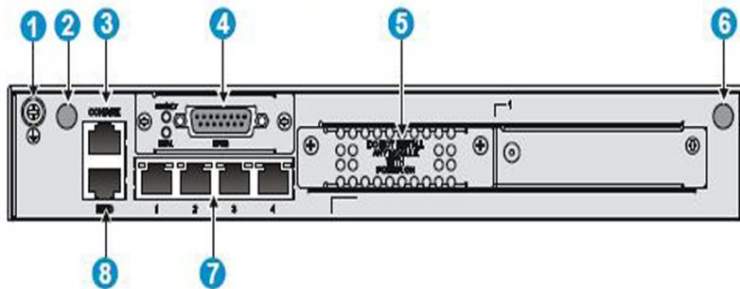


# Wireless Router



- (1) Power switch                      (2) Power receptacle                      (3) USB port  
 (4) Reset button

Figure 8 A



- (1) Grounding screw                      (2) Antenna port                      (3) Console/AUX port  
 (4) E1 port EPRIO                      (5) SIC/DSIC slot                      (6) Antenna port  
 (7) Ethernet LAN ports (ETH1 to ETH4)  
 (8) Ethernet WAN port ETH0

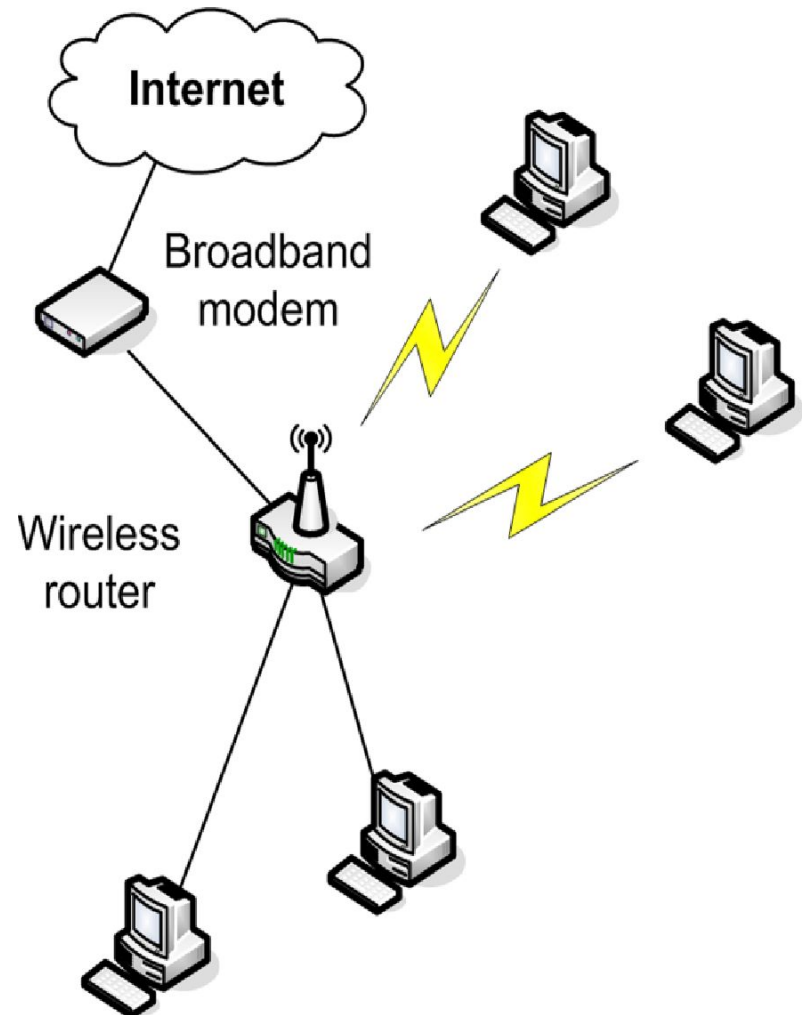
**combines bridge,  
 router, switch, and  
 AP functionality**

**is not routing  
 wireless signals**



# Wireless Router Use

**give you an easy way to share a high-speed Internet connection**



# Summary

- **Network adapter**
- **Repeater**
- **Hub**
- **Bridge**
- **Switch**
- **Router**
- **Access point**
- **Wireless router**

# Hardware Fundamentals



# Switch Basics



catalog.onliner.by

# HP E3500-24G-PoE

Softtech.cz



Softtech.cz

**console port**

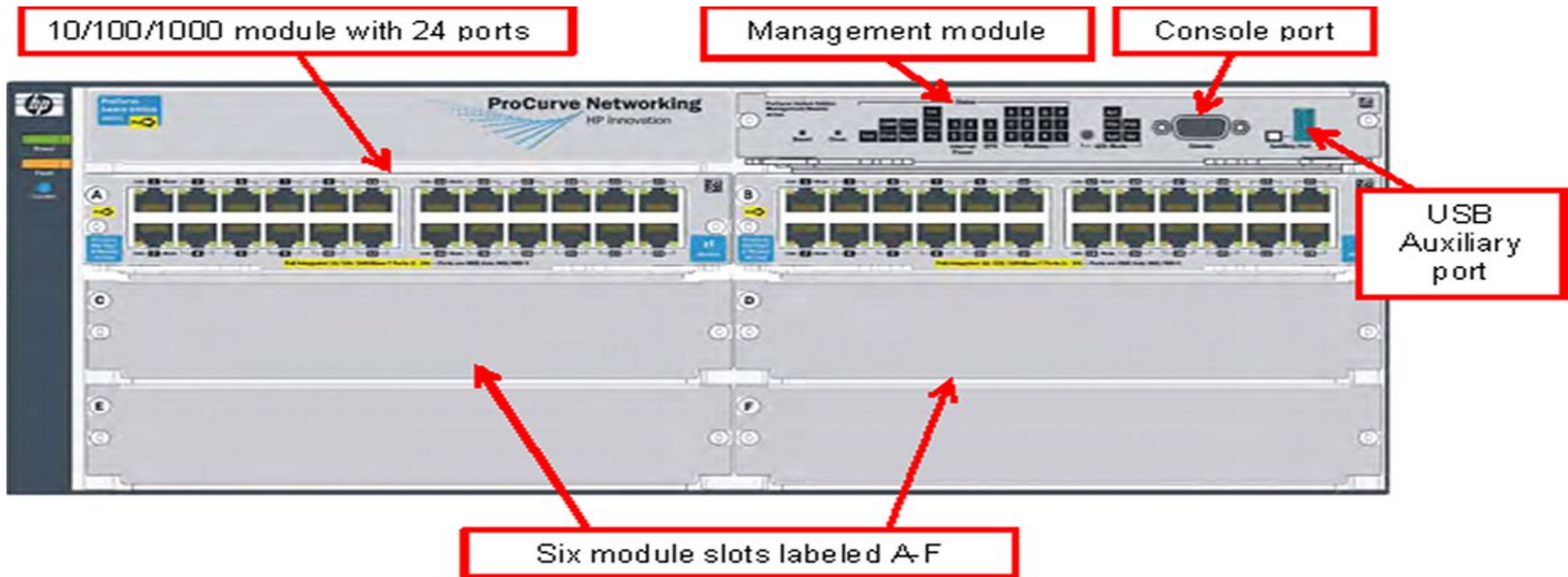
**USB port**

**20  
10/100/1000 Base-T ports.**

**8 ports HP refers to  
as dual-personality  
ports**

- 4 ports support mini-GBIC or 10/100/1000 Base-T, giving you the option of wired or fiber optic media.
- 4 ports, if a transceiver is inserted, giving you the option of fiber optic media.

# HP 5406zl-48G switch



**up to six modules. The management module hosts the console and USB ports.**

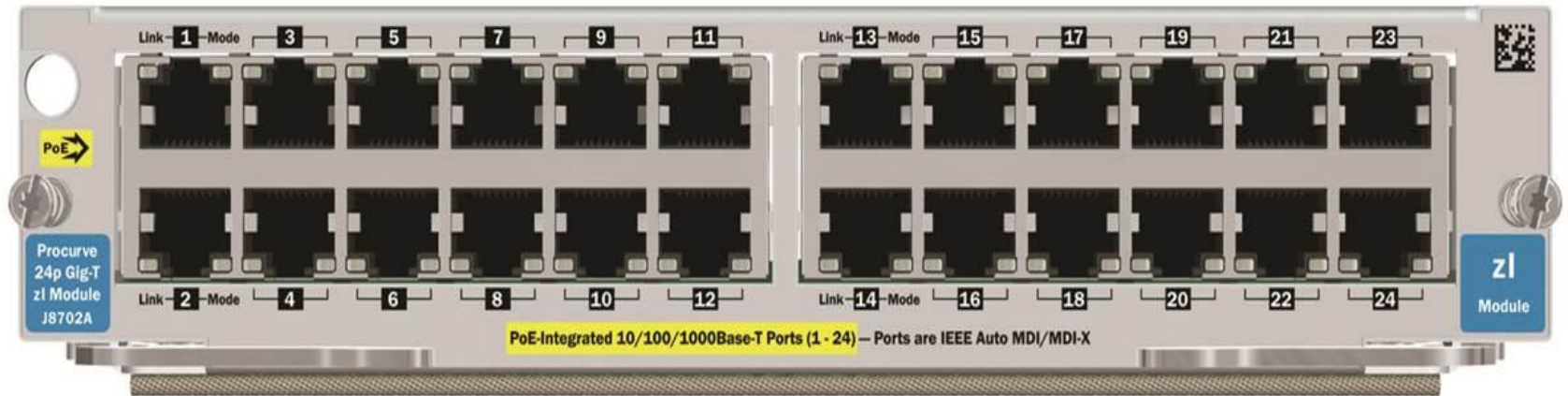
# HP 5406zl-48G switch

**You could install additional port modules, as needed**

**In many switches, the modules are hot-swappable.**

- **Refers to device components and modules that can be changed out without powering down the device. One module can be changed with one of the same type while the remaining modules stay up and operational.**

# Sample Module



**has 24 ports**

**The ports in a module are referred to by slot identifier**



# Switch management options

**have three  
management  
interface  
options**

- **Command line interface (CLI) (console port or over the network);**
- **Menu interface (console port or over the network);**
- **Web interface (over the network only).**

# Switch management options

**The Command line interface (CLI)**

**The menu interface**

**The web interface**

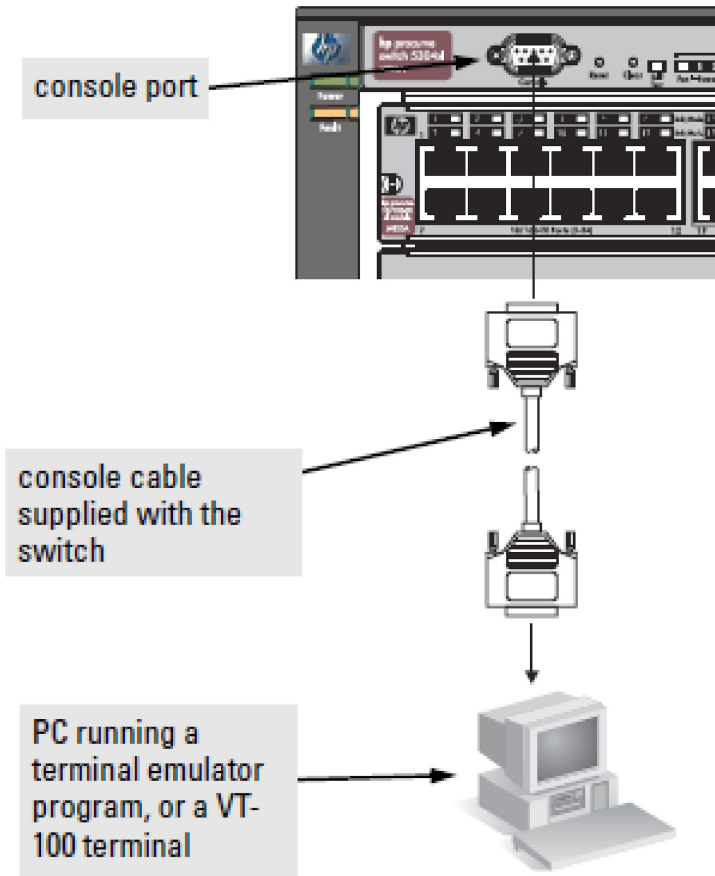
# Summary

- **CLI**
- **Menu interface**
- **Web interface**

# Hardware Fundamentals

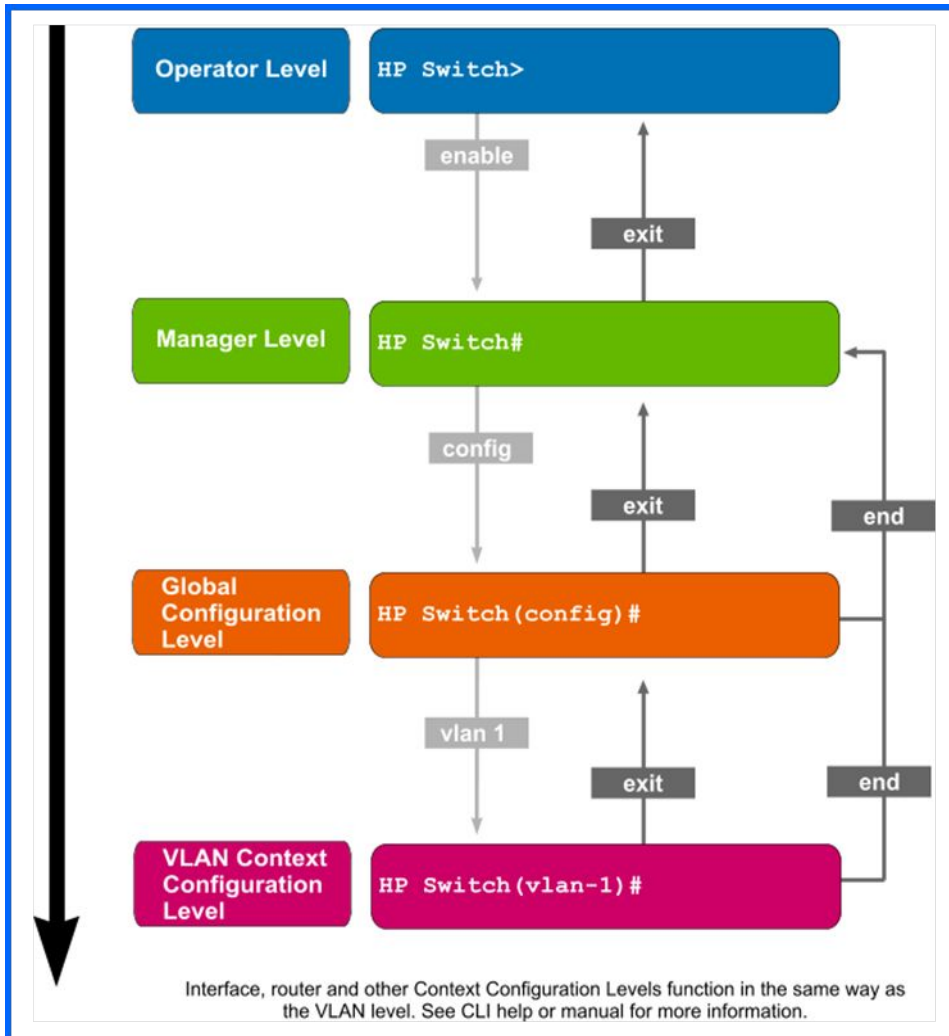


# Console Connection



connecting to the console port

# CLI Levels



**manager level  
operator level**

**The global configuration  
level (config context) and  
VLAN context  
configuration level**

# CLI Current Configuration

```
CA: Telnet 192.168.1.110
HP J4850A ProCurve Switch 5304XL
Firmware revision E.10.37

Copyright (C) 1991-2006 Hewlett-Packard Co. All Rights Reserved.

                RESTRICTED RIGHTS LEGEND

Use, duplication, or disclosure by the Government is subject to restrictions
as set forth in subdivision (b) (3) (ii) of the Rights in Technical Data and
Computer Software clause at 52.227-7013.

                HEWLETT-PACKARD COMPANY, 3000 Hanover St., Palo Alto, CA 94303

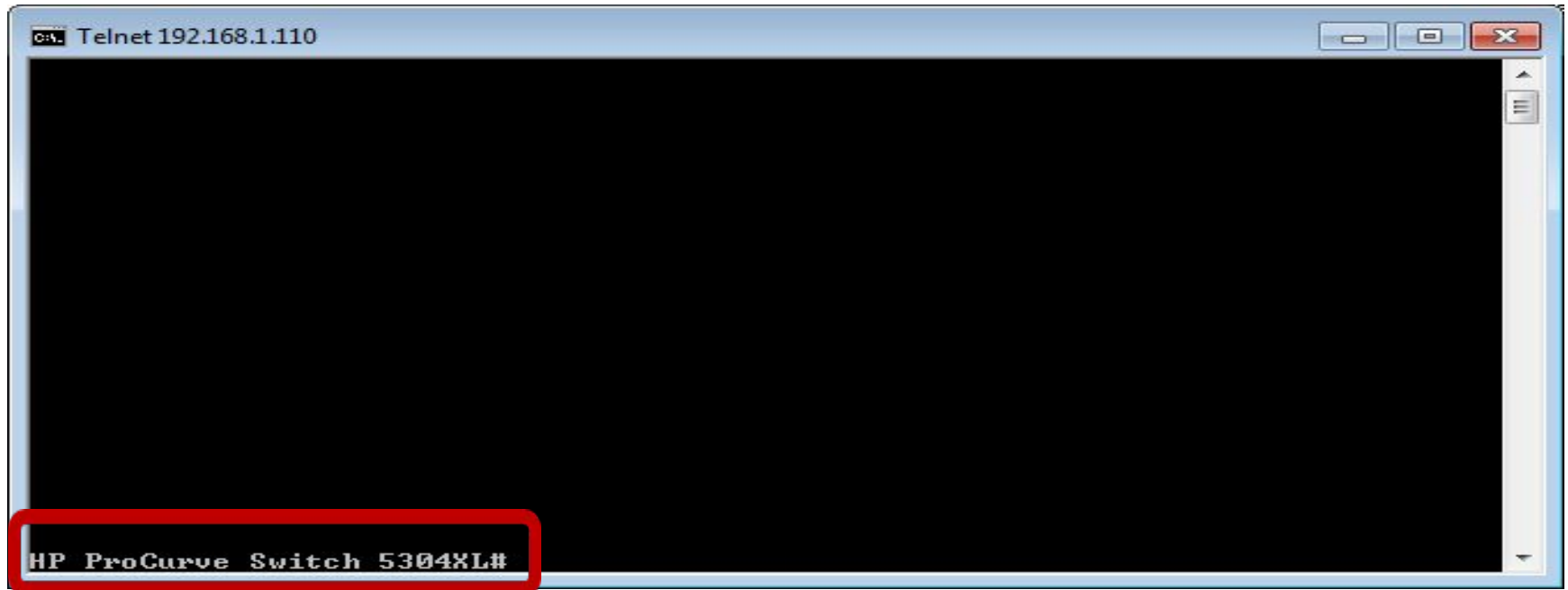
We'd like to keep you up to date about:
 * Software feature updates
 * New product announcements
 * Special events

Please register your products now at:  www.ProCurve.com

Press any key to continue
```

# Default Prompt

connect in manager level



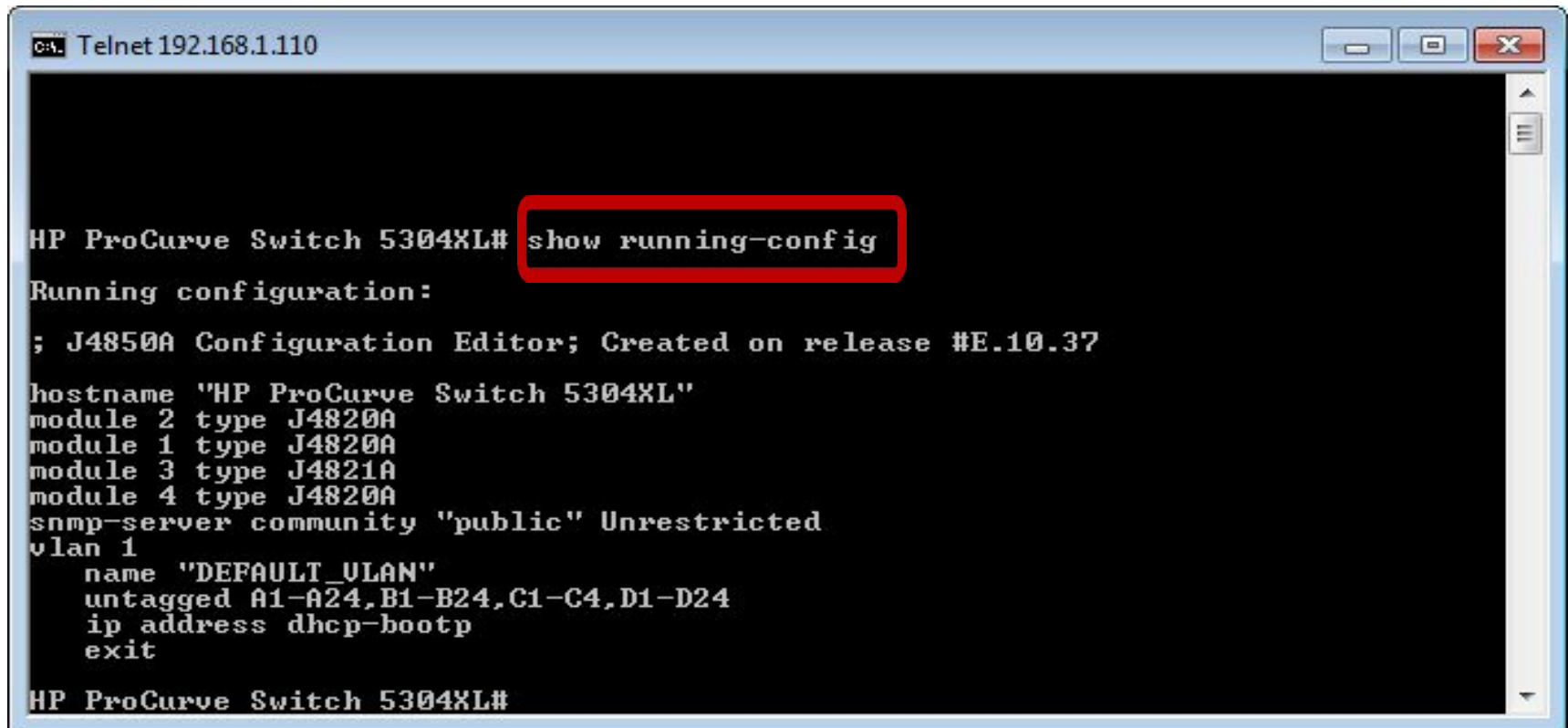
The image shows a screenshot of a Telnet session window. The title bar reads "C:\> Telnet 192.168.1.110". The main area of the window is black. At the bottom left, the text "HP ProCurve Switch 5304XL#" is displayed in a monospaced font. A red rectangular box highlights this text.

```
C:\> Telnet 192.168.1.110  
HP ProCurve Switch 5304XL#
```



# CLI Active Configuration

*show running-config.*



```
Ca Telnet 192.168.1.110

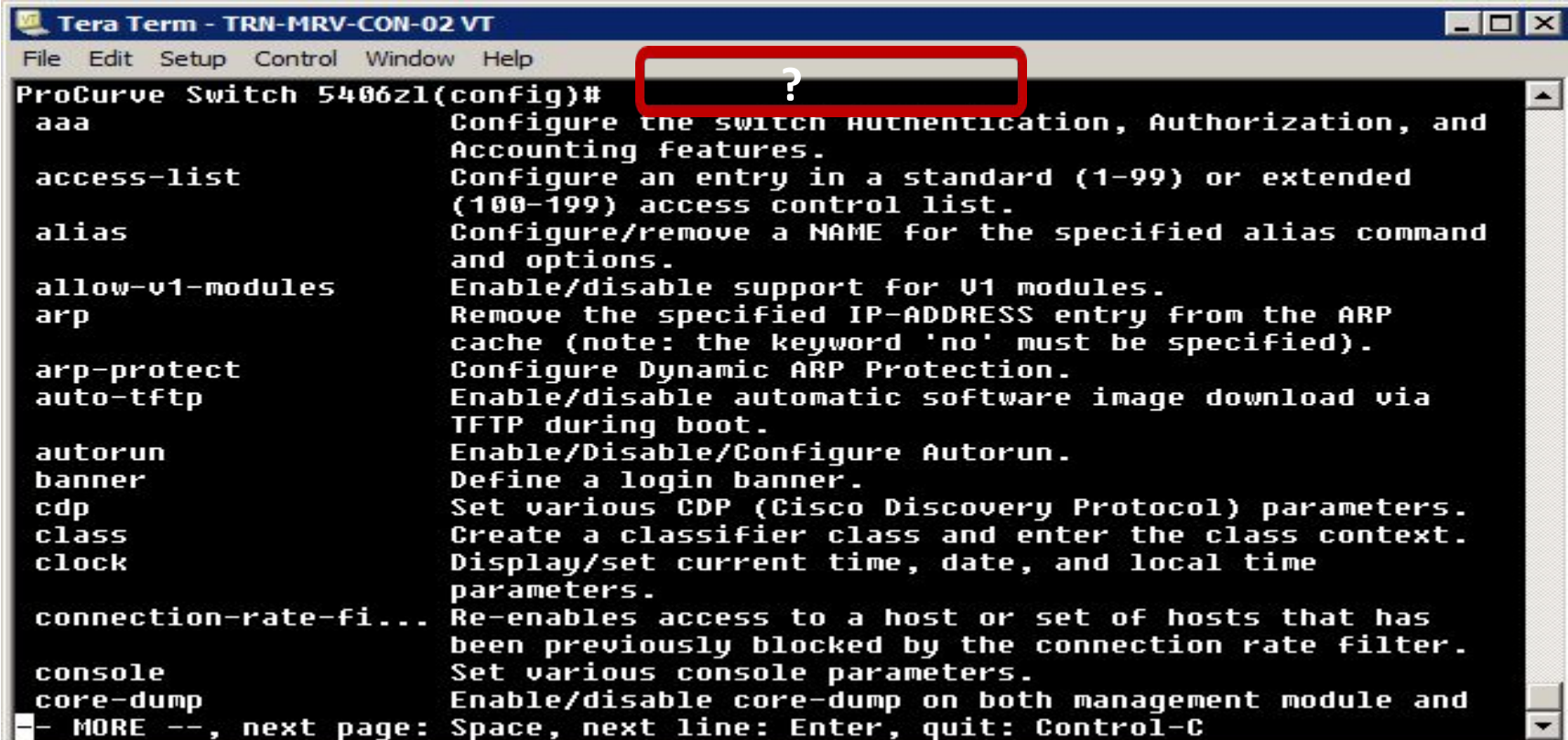
HP ProCurve Switch 5304XL# show running-config
Running configuration:
; J4850A Configuration Editor; Created on release #E.10.37

hostname "HP ProCurve Switch 5304XL"
module 2 type J4820A
module 1 type J4820A
module 3 type J4821A
module 4 type J4820A
snmp-server community "public" Unrestricted
vlan 1
  name "DEFAULT_VLAN"
  untagged A1-A24,B1-B24,C1-C4,D1-D24
  ip address dhcp-bootp
  exit

HP ProCurve Switch 5304XL#
```

# CLI Manager Command List

type ? or press the Tab key

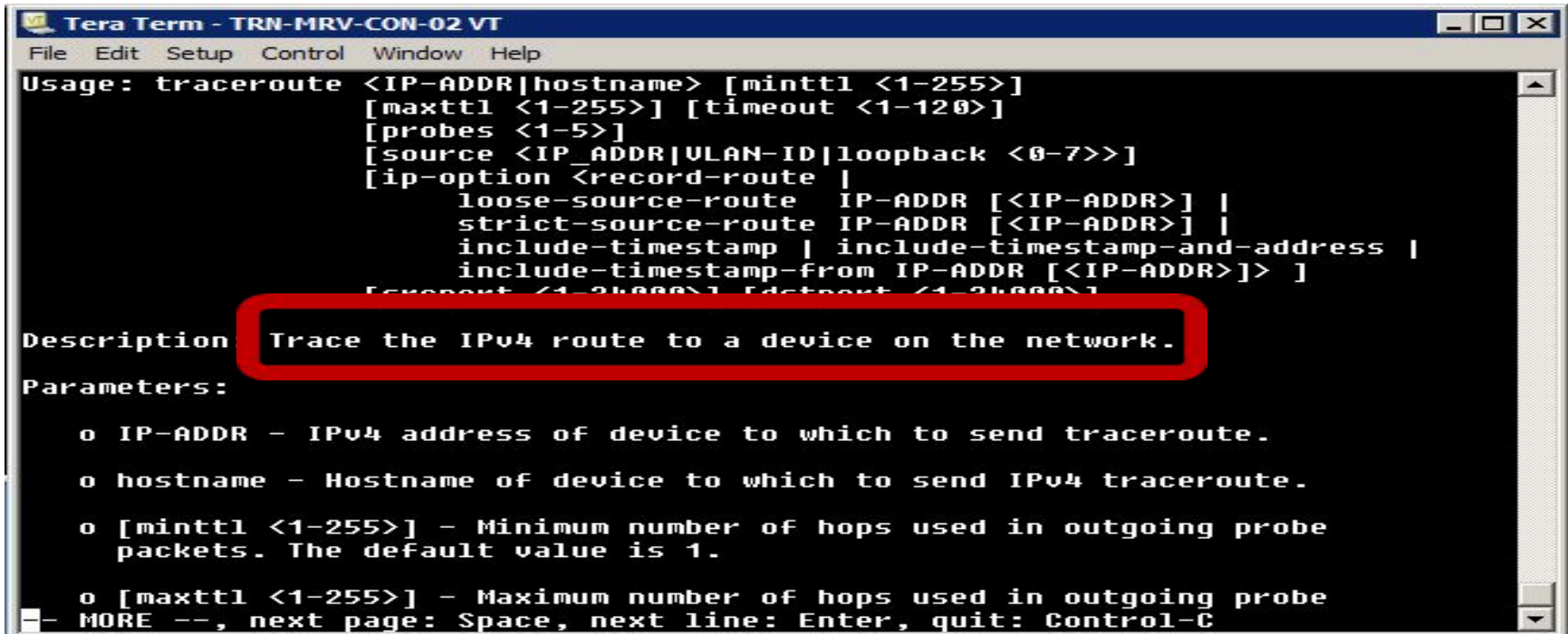


```
Tera Term - TRN-MRV-CON-02 VT
File Edit Setup Control Window Help
ProCurve Switch 5406z1(config)# ?
aaa          Configure the switch authentication, Authorization, and
             Accounting features.
access-list  Configure an entry in a standard (1-99) or extended
             (100-199) access control list.
alias        Configure/remove a NAME for the specified alias command
             and options.
allow-v1-modules Enable/disable support for V1 modules.
arp          Remove the specified IP-ADDRESS entry from the ARP
             cache (note: the keyword 'no' must be specified).
arp-protect  Configure Dynamic ARP Protection.
auto-tftp    Enable/disable automatic software image download via
             TFTP during boot.
autorun      Enable/Disable/Configure Autorun.
banner       Define a login banner.
cdp         Set various CDP (Cisco Discovery Protocol) parameters.
class        Create a classifier class and enter the class context.
clock        Display/set current time, date, and local time
             parameters.
connection-rate-fi... Re-enables access to a host or set of hosts that has
             been previously blocked by the connection rate filter.
console      Set various console parameters.
core-dump    Enable/disable core-dump on both management module and
- MORE --, next page: Space, next line: Enter, quit: Control-C
```

# Command Help

by *help*, *?*, or *<tab>*

If you want to know more about the traceroute command you would run: *traceroute help*

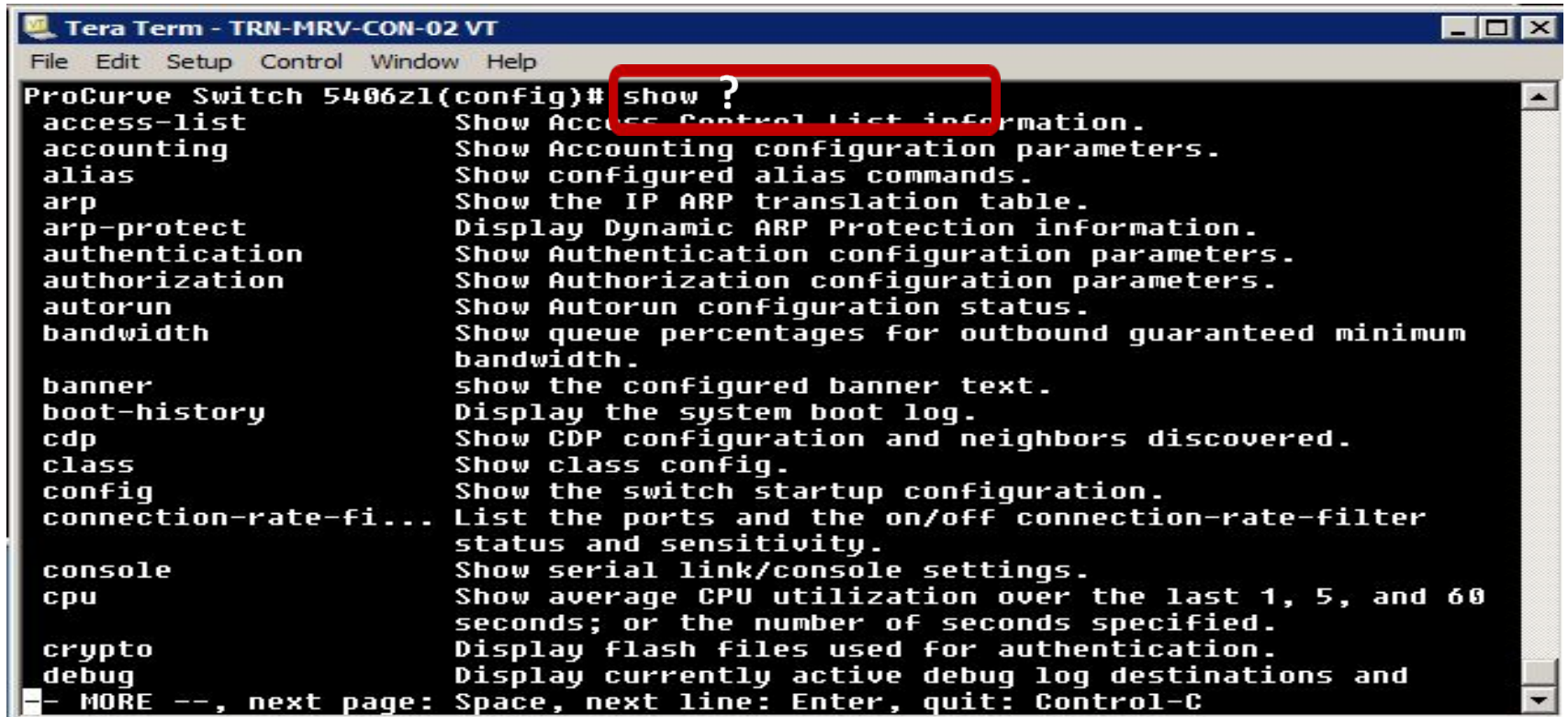


```
Tera Term - TRN-MRV-CON-02 VT
File Edit Setup Control Window Help
Usage: traceroute <IP-ADDR|hostname> [minttl <1-255>]
       [maxttl <1-255>] [timeout <1-120>]
       [probes <1-5>]
       [source <IP_ADDR|VLAN-ID|loopback <0-7>>]
       [ip-option <record-route |
         loose-source-route IP-ADDR [<IP-ADDR>] |
         strict-source-route IP-ADDR [<IP-ADDR>] |
         include-timestamp | include-timestamp-and-address |
         include-timestamp-from IP-ADDR [<IP-ADDR>]> ]
       [sreport <1-255>] [dreport <1-255>]
Description: Trace the IPv4 route to a device on the network.
Parameters:
  o IP-ADDR - IPv4 address of device to which to send traceroute.
  o hostname - Hostname of device to which to send IPv4 traceroute.
  o [minttl <1-255>] - Minimum number of hops used in outgoing probe
    packets. The default value is 1.
  o [maxttl <1-255>] - Maximum number of hops used in outgoing probe
  o - MORE --, next page: Space, next line: Enter, quit: Control-C
```

# Show Commands

the *show* command

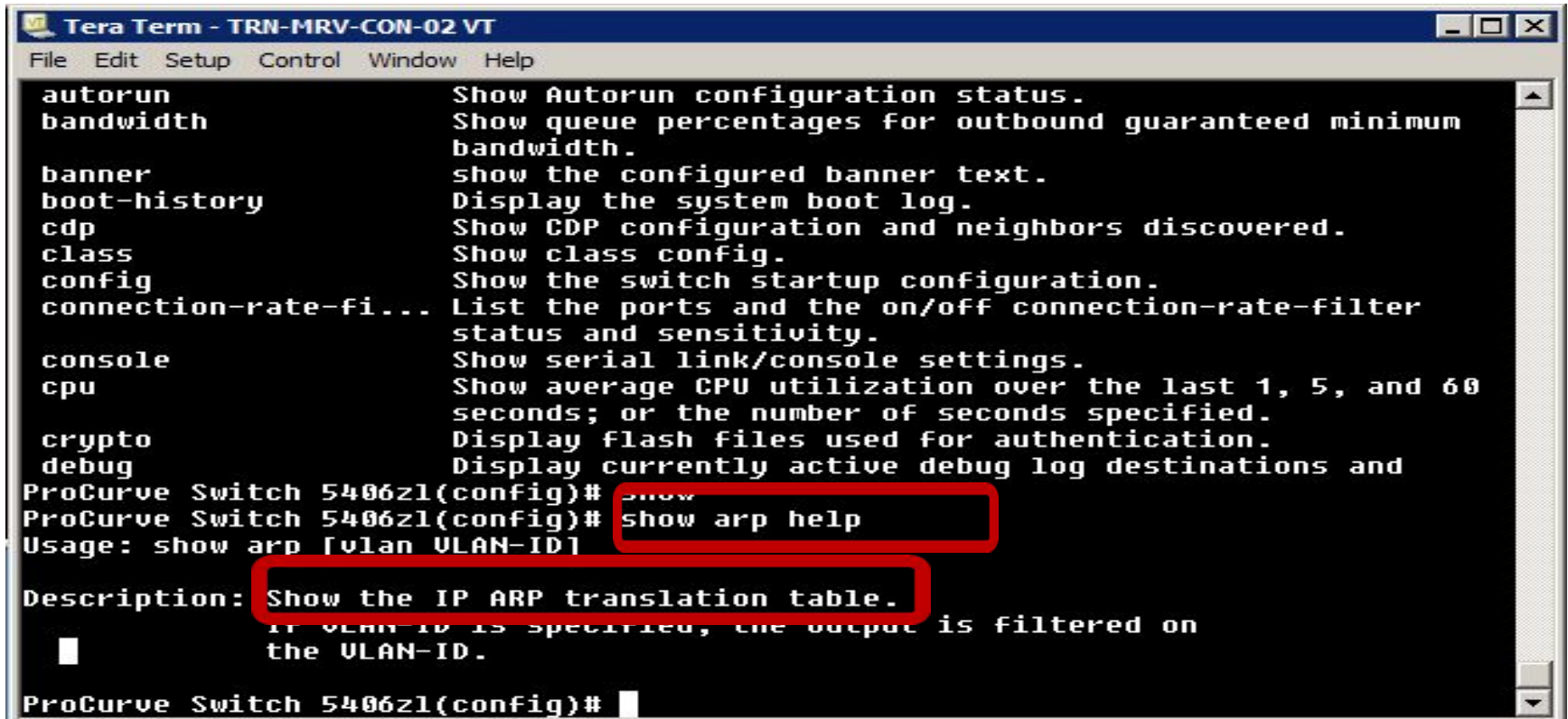
type ? or press the Tab key



```
Tera Term - TRN-MRV-CON-02 VT
File Edit Setup Control Window Help
ProCurve Switch 5406z1(config)# show ?
access-list      Show Access Control List information.
accounting       Show Accounting configuration parameters.
alias            Show configured alias commands.
arp              Show the IP ARP translation table.
arp-protect      Display Dynamic ARP Protection information.
authentication   Show Authentication configuration parameters.
authorization    Show Authorization configuration parameters.
autorun          Show Autorun configuration status.
bandwidth        Show queue percentages for outbound guaranteed minimum
                 bandwidth.
banner           show the configured banner text.
boot-history     Display the system boot log.
cdp              Show CDP configuration and neighbors discovered.
class            Show class config.
config           Show the switch startup configuration.
connection-rate-fi... List the ports and the on/off connection-rate-filter
                 status and sensitivity.
console          Show serial link/console settings.
cpu              Show average CPU utilization over the last 1, 5, and 60
                 seconds; or the number of seconds specified.
crypto           Display flash files used for authentication.
debug            Display currently active debug log destinations and
- MORE --, next page: Space, next line: Enter, quit: Control-C
```

# Show Command Help

type *show*, the command name, *help*, and then press the Enter key  
*show arp help*



```
Tera Term - TRN-MRV-CON-02 VT
File Edit Setup Control Window Help
autorun      Show Autorun configuration status.
bandwidth    Show queue percentages for outbound guaranteed minimum
             bandwidth.
banner       show the configured banner text.
boot-history Display the system boot log.
cdp          Show CDP configuration and neighbors discovered.
class        Show class config.
config       Show the switch startup configuration.
connection-rate-fi... List the ports and the on/off connection-rate-filter
             status and sensitivity.
console      Show serial link/console settings.
cpu          Show average CPU utilization over the last 1, 5, and 60
             seconds; or the number of seconds specified.
crypto       Display flash files used for authentication.
debug        Display currently active debug log destinations and
ProCurve Switch 5406z1(config)# show
ProCurve Switch 5406z1(config)# show arp help
Usage: show arp [vlan ULAN-ID]

Description: Show the IP ARP translation table.
             If VLAN-ID is specified, the output is filtered on
             the ULAN-ID.
ProCurve Switch 5406z1(config)#
```

# Show command examples

*show vlans*

*show ip route*

# Show command examples

*show interface*

# Link Layer Discovery Protocol (LLDP)

**show lldp info local-device**

**show lldp info remote-device**

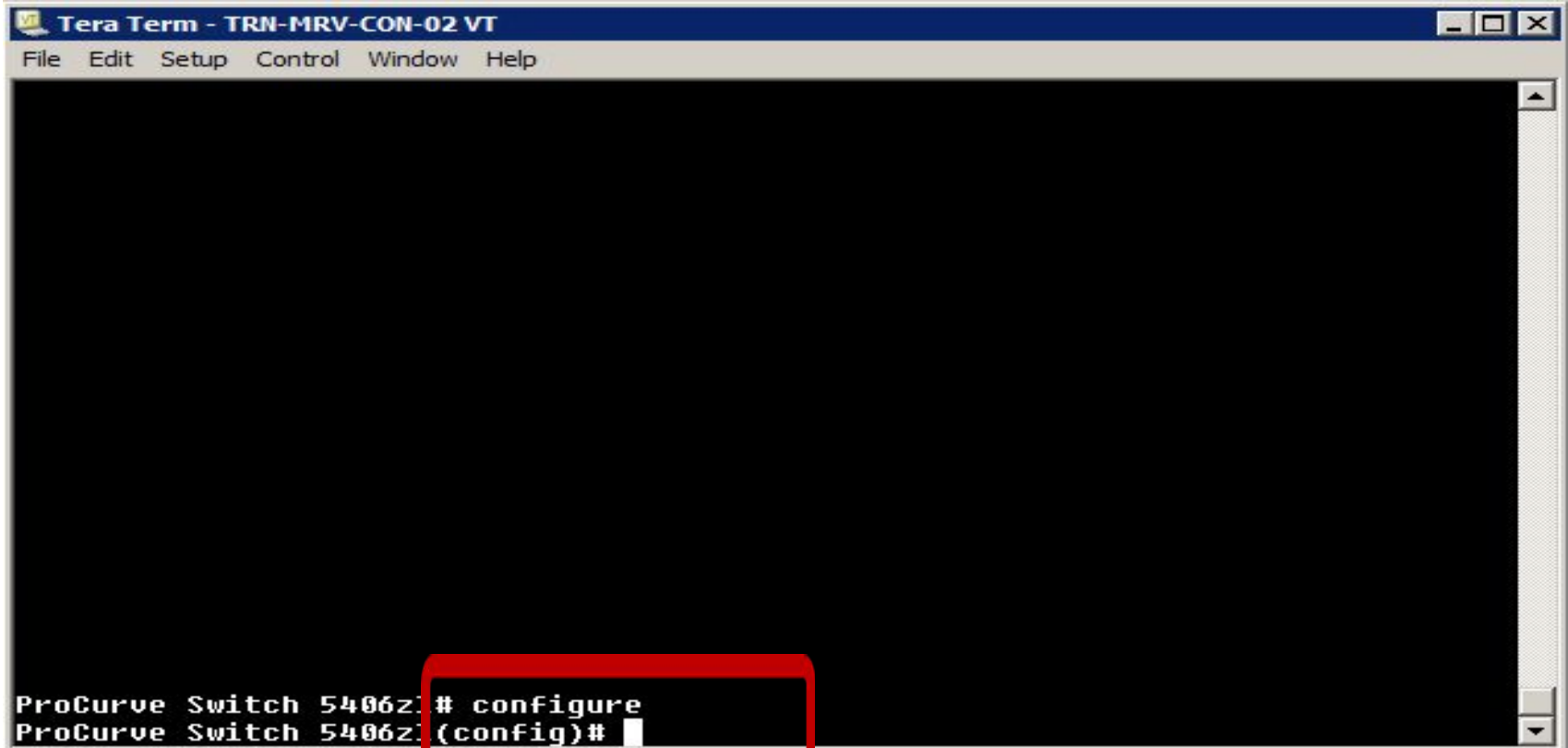


# Global Configuration Context

change the command context

the prompt changes to include

(config)

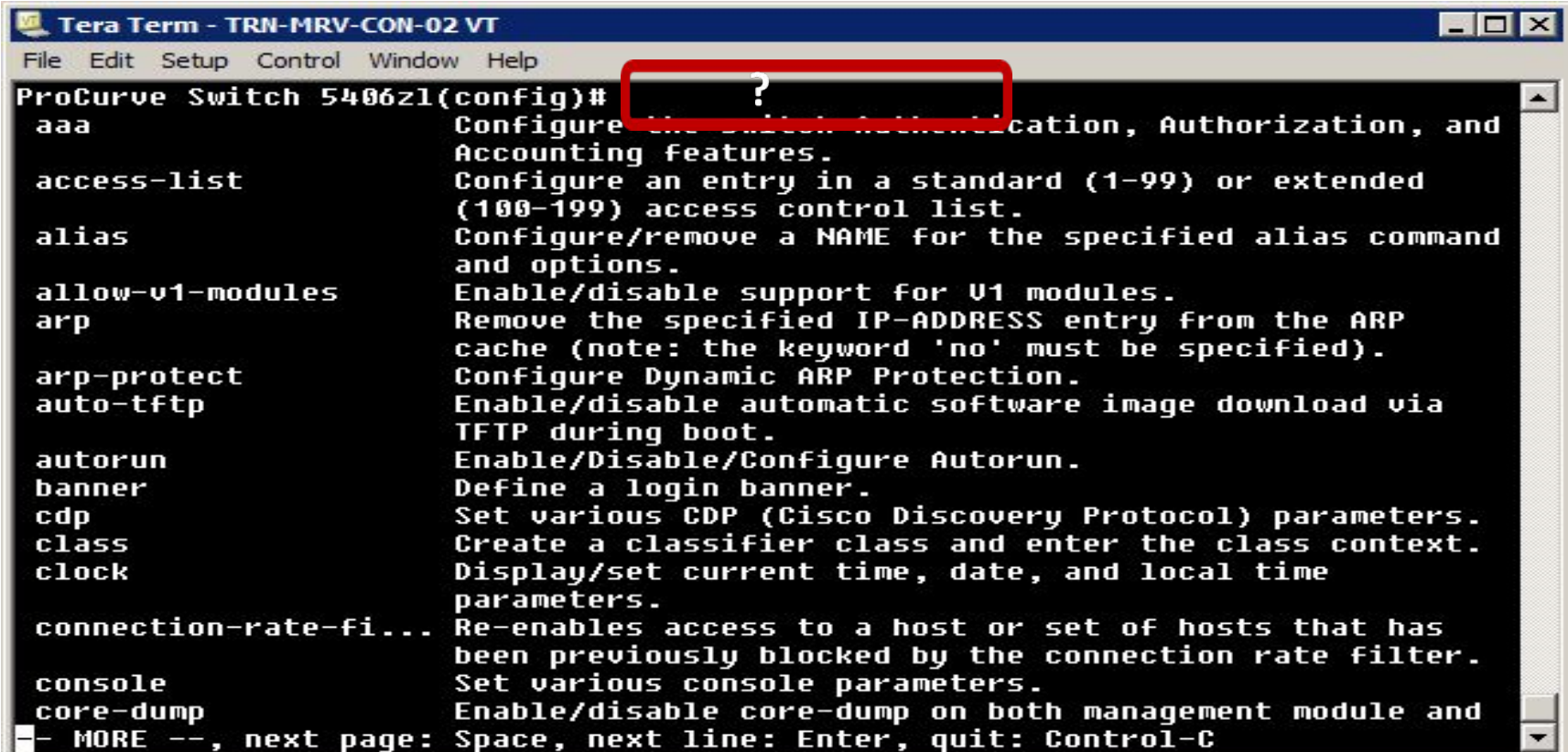


The screenshot shows a terminal window titled "Tera Term - TRN-MRV-CON-02 VT". The menu bar includes "File", "Edit", "Setup", "Control", "Window", and "Help". The terminal output shows the command "# configure" being entered, which changes the prompt from "ProCurve Switch 5406z:" to "(config)#". A red box highlights the prompt change.

```
ProCurve Switch 5406z: # configure
ProCurve Switch 5406z: (config)#
```

# Global Configuration Commands

if you type ?,



```
Tera Term - TRN-MRV-CON-02 VT
File Edit Setup Control Window Help
ProCurve Switch 5406z1(config)# ?
aaa          Configure the switch Authentication, Authorization, and
             Accounting features.
access-list  Configure an entry in a standard (1-99) or extended
             (100-199) access control list.
alias        Configure/remove a NAME for the specified alias command
             and options.
allow-v1-modules Enable/disable support for V1 modules.
arp          Remove the specified IP-ADDRESS entry from the ARP
             cache (note: the keyword 'no' must be specified).
arp-protect  Configure Dynamic ARP Protection.
auto-tftp    Enable/disable automatic software image download via
             TFTP during boot.
autorun      Enable/Disable/Configure Autorun.
banner       Define a login banner.
cdp          Set various CDP (Cisco Discovery Protocol) parameters.
class        Create a classifier class and enter the class context.
clock        Display/set current time, date, and local time
             parameters.
connection-rate-fi... Re-enables access to a host or set of hosts that has
             been previously blocked by the connection rate filter.
console      Set various console parameters.
core-dump    Enable/disable core-dump on both management module and
- MORE --, next page: Space, next line: Enter, quit: Control-C
```

# Switch setup using the CLI

**contact person for the switch, the manager password, DHCP/Bootp enable or disable, and IP address information**

**define a descriptive and unique hostname for your switch**

**Config context**

***hostname switch1***

# Manager access

*password manager user-name admin*

*password operator user-name techie*

*no password all*

# Global configuration context commands

## Config context

From there, you can enter the configuration context for a particular port

*interface 10*

*switch1(eth-10)#*

# Manage ports

**switch1(eth-10) -**

*enable*

*disable*

*speed-duplex*

*mdix-mode*

*name*

# VLAN context commands

*vlan 1*

*switch1(vlan-1)#*

*ip address 192.168.1.14/24*

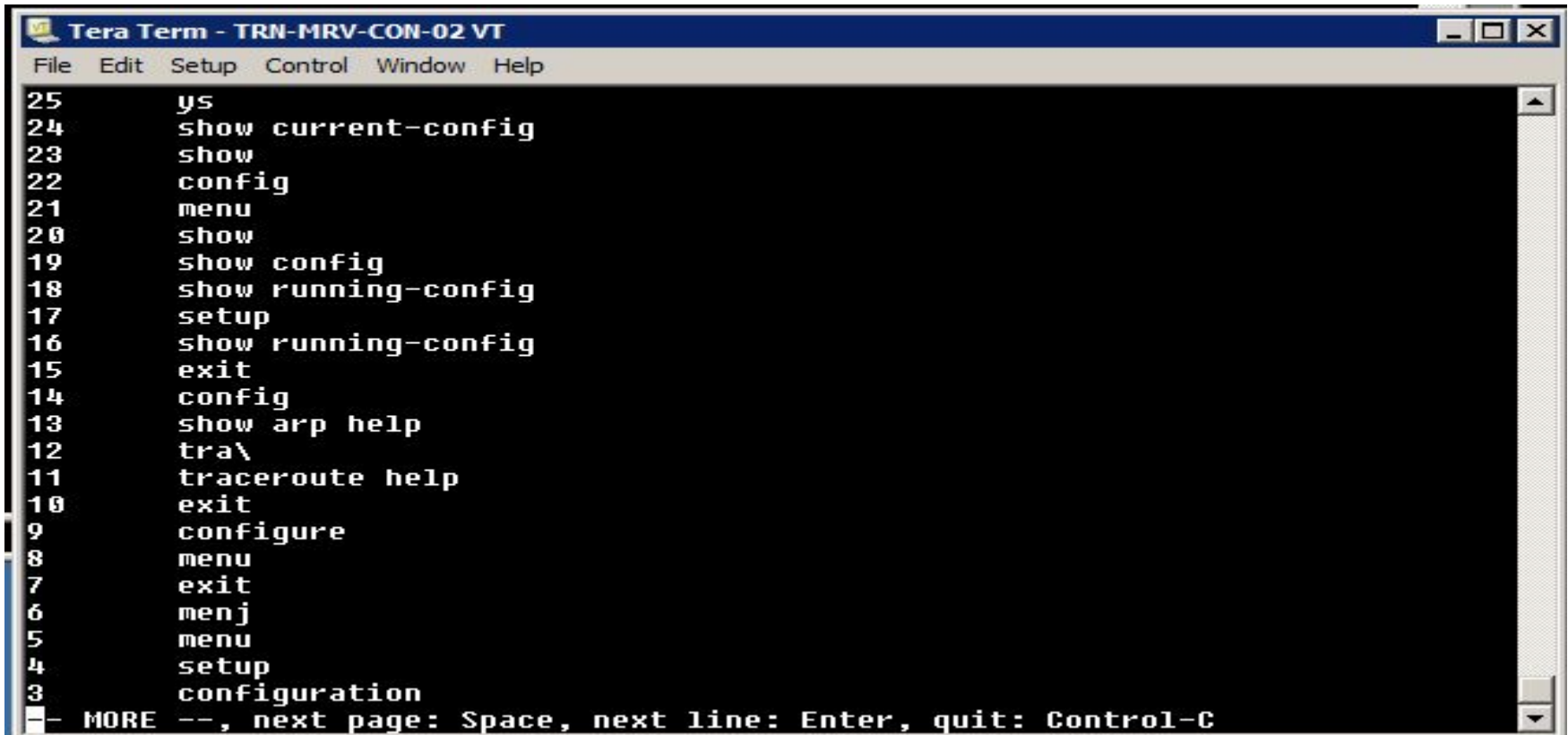
# Save configuration changes

- **write  
memory**



# Command History

*show history*

A screenshot of a Tera Term terminal window titled "Tera Term - TRN-MRV-CON-02 VT". The window has a menu bar with "File", "Edit", "Setup", "Control", "Window", and "Help". The terminal content shows a list of commands and their corresponding line numbers, from 25 down to 3. The commands are: 25: ys, 24: show current-config, 23: show, 22: config, 21: menu, 20: show, 19: show config, 18: show running-config, 17: setup, 16: show running-config, 15: exit, 14: config, 13: show arp help, 12: tra\, 11: traceroute help, 10: exit, 9: configure, 8: menu, 7: exit, 6: menj, 5: menu, 4: setup, 3: configuration. At the bottom of the terminal, there is a prompt character (a small square) followed by the text: "MORE --, next page: Space, next line: Enter, quit: Control-C".

```
25 ys
24 show current-config
23 show
22 config
21 menu
20 show
19 show config
18 show running-config
17 setup
16 show running-config
15 exit
14 config
13 show arp help
12 tra\
11 traceroute help
10 exit
9 configure
8 menu
7 exit
6 menj
5 menu
4 setup
3 configuration
- MORE --, next page: Space, next line: Enter, quit: Control-C
```

# Command History

**up and down arrows to  
scroll through commands history list**

***repeat 10***

# Summary

- **Operator level**
- **Manager level**
- **Global configuration level**
- **VLAN context configuration level**

# Hardware Fundamentals



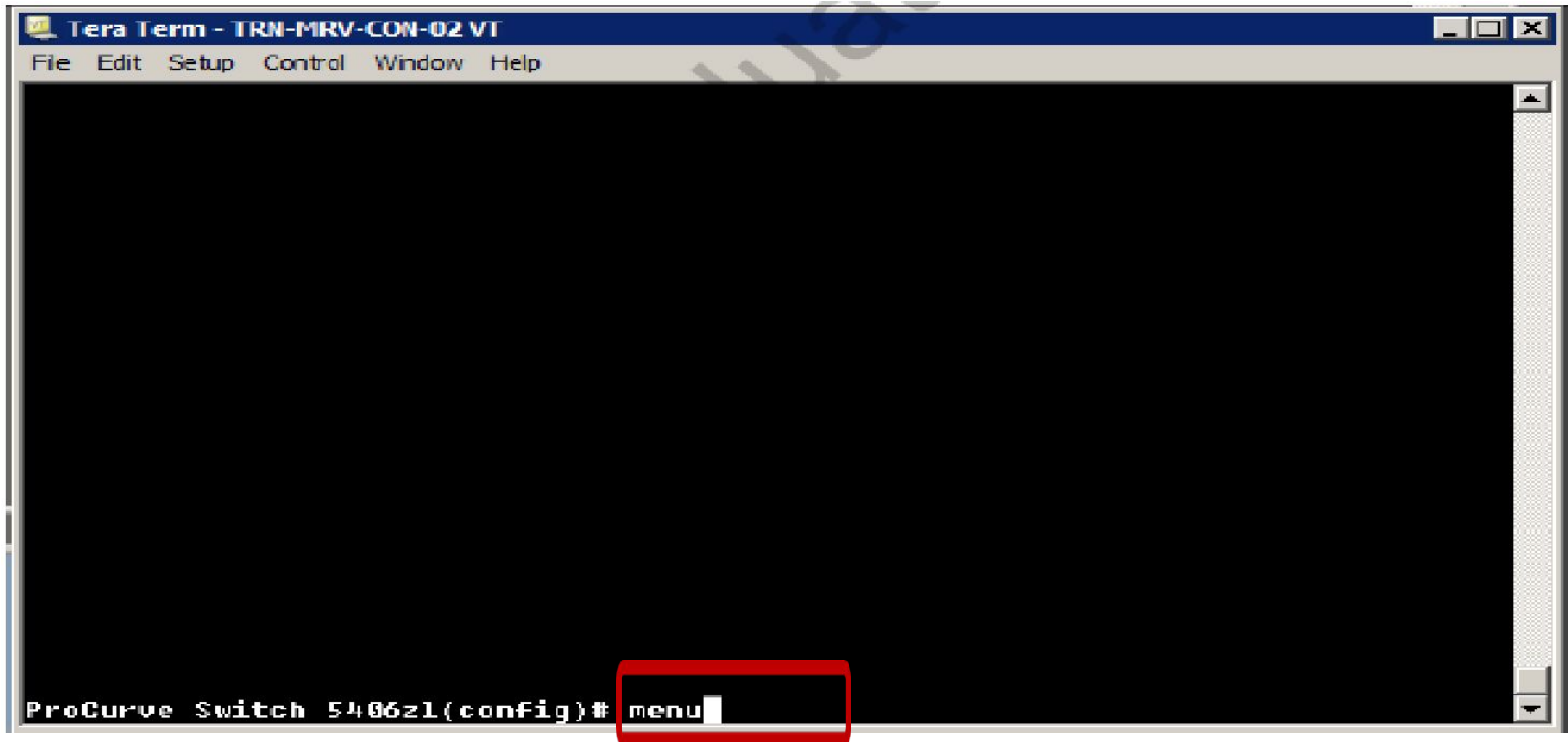
# Menu interface

**is easier to use  
select commands**

**limits  
the management commands**

# Launch the menu interface

*menu*



# Main Menu

```
Tera Term - TRN-MRV-CON-02 VT
File Edit Setup Control Window Help
ProCurve Switch 5406z1 14-Mar-2012 1:26:5
----- CONSOLE - MANAGER MODE -----
Main Menu

1. Status and Counters...
2. Switch Configuration...
3. Console Passwords...
4. Event Log
5. Command Line (CLI)
6. Reboot Switch
7. Download OS
8. Run Setup
0. Logout

Provides the menu to display configuration, status, and counters.
To select menu item, press item number, or highlight item and press <Enter>.
```

# Main Menu

- Provides access to display screens showing **switch information, port status and port counters, port and VLAN address tables.**

- Provides access to configuration screens for **displaying and changing the current configuration settings.**

- Provides access to the screen **used to set or change Manager-level and Operator-level passwords**, and to delete Manager and Operator password protection.

- Enables you **to read progress and error messages** that are useful for checking and troubleshooting switch operation.



# Main Menu

• **Selects the Command Line Interface** at the same level (Manager or Operator) that you are accessing in the Menu interface.

• Performs a **"warm" reboot of the switch**, which clears most temporary error conditions, resets the network activity counters to zero, and resets the system up-time to zero.

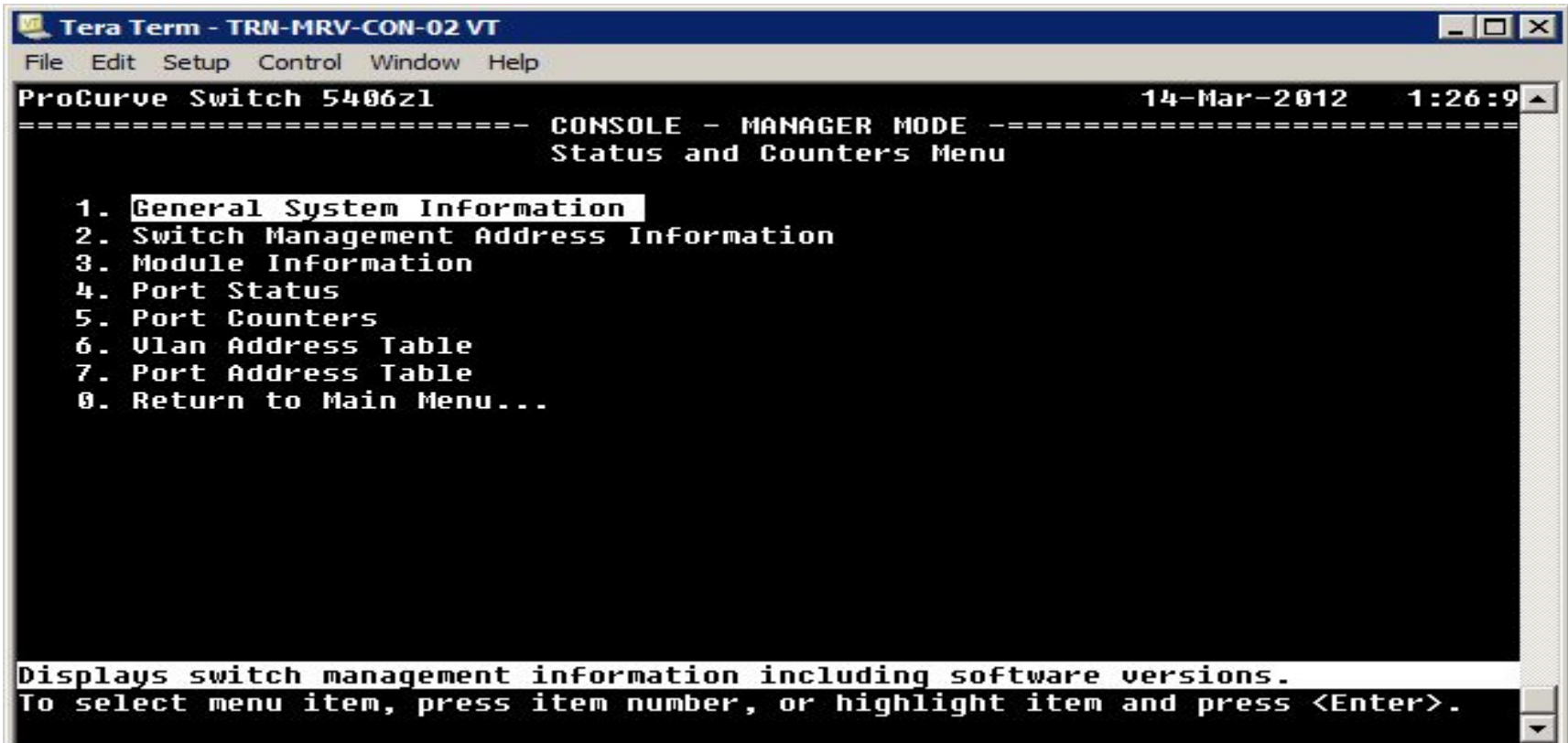
• Enables you to **download a new switch software** version to the switch.

• Displays the **Switch Setup** screen for quickly **configuring basic switch parameters** such as IP addressing, default gateway, logon default interface, and others.

• **Closes the Menu interface** and console session, and disconnects Telnet access to the switch.

# Status and Counters Menu

For example, *Status and Counters...* takes you to *Status and Counters Menu*

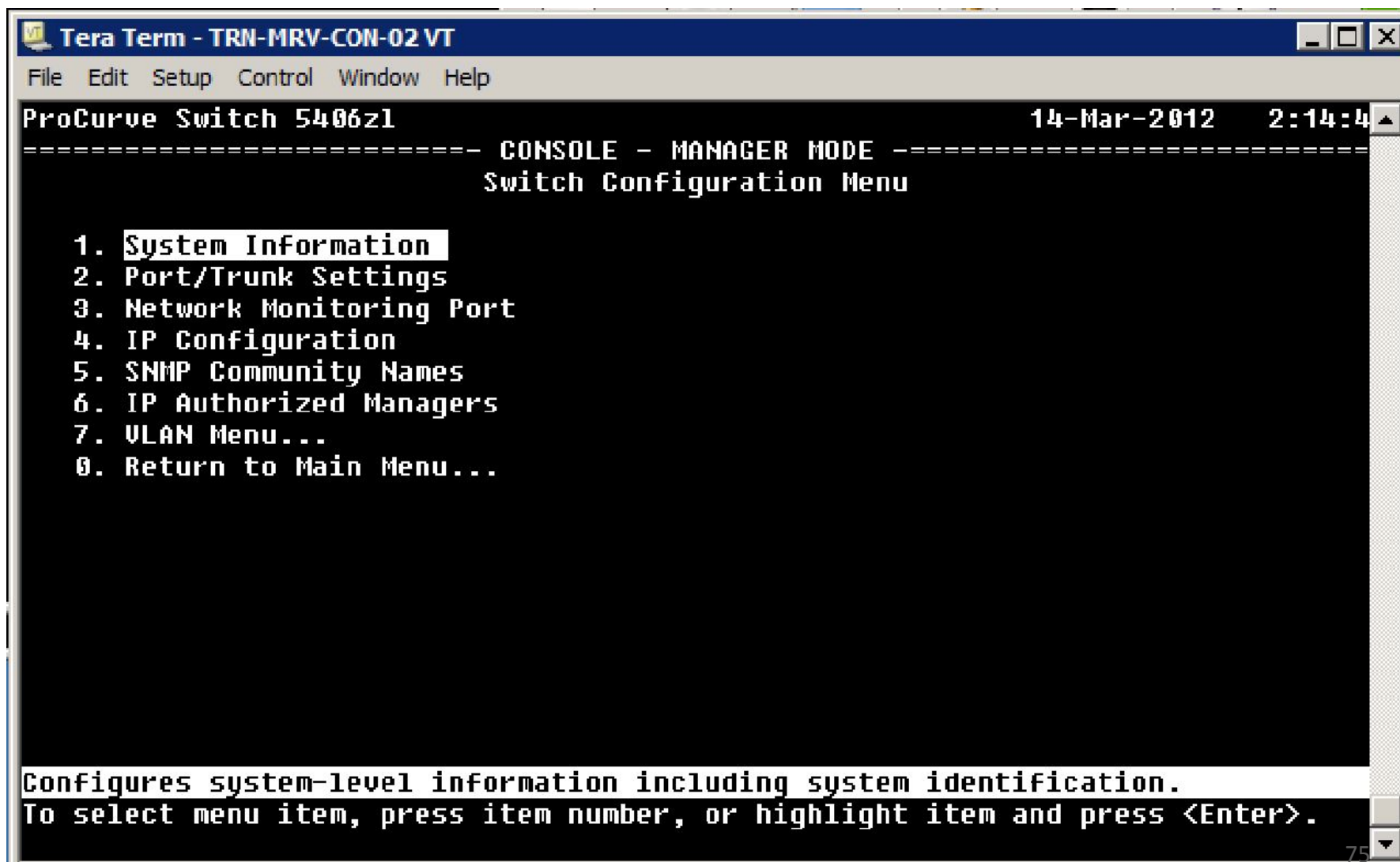


```
Tera Term - TRN-MRV-CON-02 VT
File Edit Setup Control Window Help
ProCurve Switch 5406z1 14-Mar-2012 1:26:9
===== CONSOLE - MANAGER MODE =====
                        Status and Counters Menu

1. General System Information
2. Switch Management Address Information
3. Module Information
4. Port Status
5. Port Counters
6. Vlan Address Table
7. Port Address Table
8. Return to Main Menu...

Displays switch management information including software versions.
To select menu item, press item number, or highlight item and press <Enter>.
```

# Switch Configuration

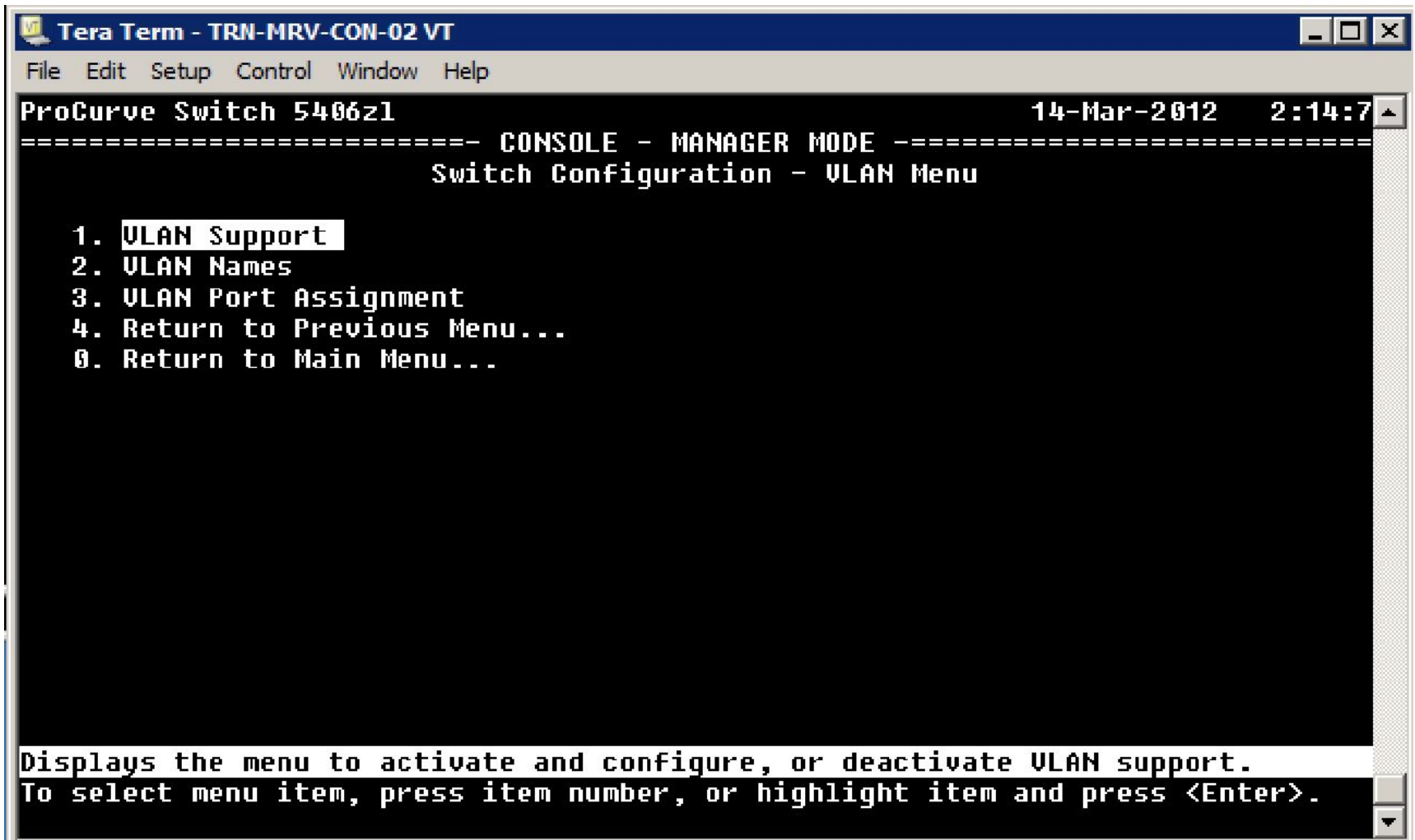


```
Tera Term - TRN-MRV-CON-02 VT
File Edit Setup Control Window Help
ProCurve Switch 5406z1 14-Mar-2012 2:14:4
----- CONSOLE - MANAGER MODE -----
Switch Configuration Menu

1. System Information
2. Port/Trunk Settings
3. Network Monitoring Port
4. IP Configuration
5. SNMP Community Names
6. IP Authorized Managers
7. VLAN Menu...
0. Return to Main Menu...

Configures system-level information including system identification.
To select menu item, press item number, or highlight item and press <Enter>.
```

# VLAN Menu



```
Tera Term - TRN-MRV-CON-02 VT
File Edit Setup Control Window Help
ProCurve Switch 5406z1 14-Mar-2012 2:14:7
=====-- CONSOLE - MANAGER MODE -----
                Switch Configuration - VLAN Menu

1. VLAN Support
2. VLAN Names
3. VLAN Port Assignment
4. Return to Previous Menu...
0. Return to Main Menu...

Displays the menu to activate and configure, or deactivate VLAN support.
To select menu item, press item number, or highlight item and press <Enter>.
```

# VLAN Menu – VLAN Names

```
Tera Term - TRN-MRV-CON-02 VT
File Edit Setup Control Window Help
ProCurve Switch 5406z1 14-Mar-2012 2:19:5
===== CONSOLE - MANAGER MODE =====
Switch Configuration - VLAN - VLAN Names

802.1Q VLAN ID : 2
Name : DBUsers

Actions-> Cancel Edit Save Help

Enter VLAN Name - up to 32 characters
Use arrow keys to change field selection, <Space> to toggle field choices,
and <Enter> to go to Actions.
```

# VLAN Menu – VLAN Port Assignment

```
Tera Term - TRN-MRV-CON-02 VT
File Edit Setup Control Window Help
ProCurve Switch 5406z1 14-Mar-2012 2:22:8
----- CONSOLE - MANAGER MODE -----
Switch Configuration - VLAN - VLAN Port Assignment

Port  DEFAULT_VLAN  DBUsers  |  Port  DEFAULT_VLAN  DBUsers
----+-----
A1   | Untagged  No      |  A13  | Untagged  No
A2   | Untagged  No      |  A14  | Untagged  No
A3   | Untagged  No      |  A15  | Untagged  No
A4   | Untagged  No      |  A16  | Untagged  No
A5   | Untagged  No      |  A17  | Untagged  No
A6   | Untagged  No      |  A18  | Untagged  No
A7   | Untagged  No      |  A19  | Untagged  No
A8   | Untagged  No      |  A20  | Untagged  No
A9   | Untagged  No      |  A21  | Untagged  No
A10  | Untagged  No      |  A22  | Untagged  No
A11  | Untagged  No      |  A23  | Untagged  No
A12  | Untagged  No      |  A24  | Untagged  No

Actions->  Cancel  Edit  Save  Help

Select the tagging mode for the port/VLAN combination.
Use arrow keys to change field selection, <Space> to toggle field choices,
and <Enter> to go to Actions.
```

# IP Configuration

```
Tera Term - TRN-MRV-CON-02 VT
File Edit Setup Control Window Help
ProCurve Switch 5406z1 14-Mar-2012 2:42:5
===== CONSOLE - MANAGER MODE =====
Switch Configuration - Internet (IP) Service

IP Routing : Disabled

Default Gateway :
Default TTL : 64
Arp Age : 20

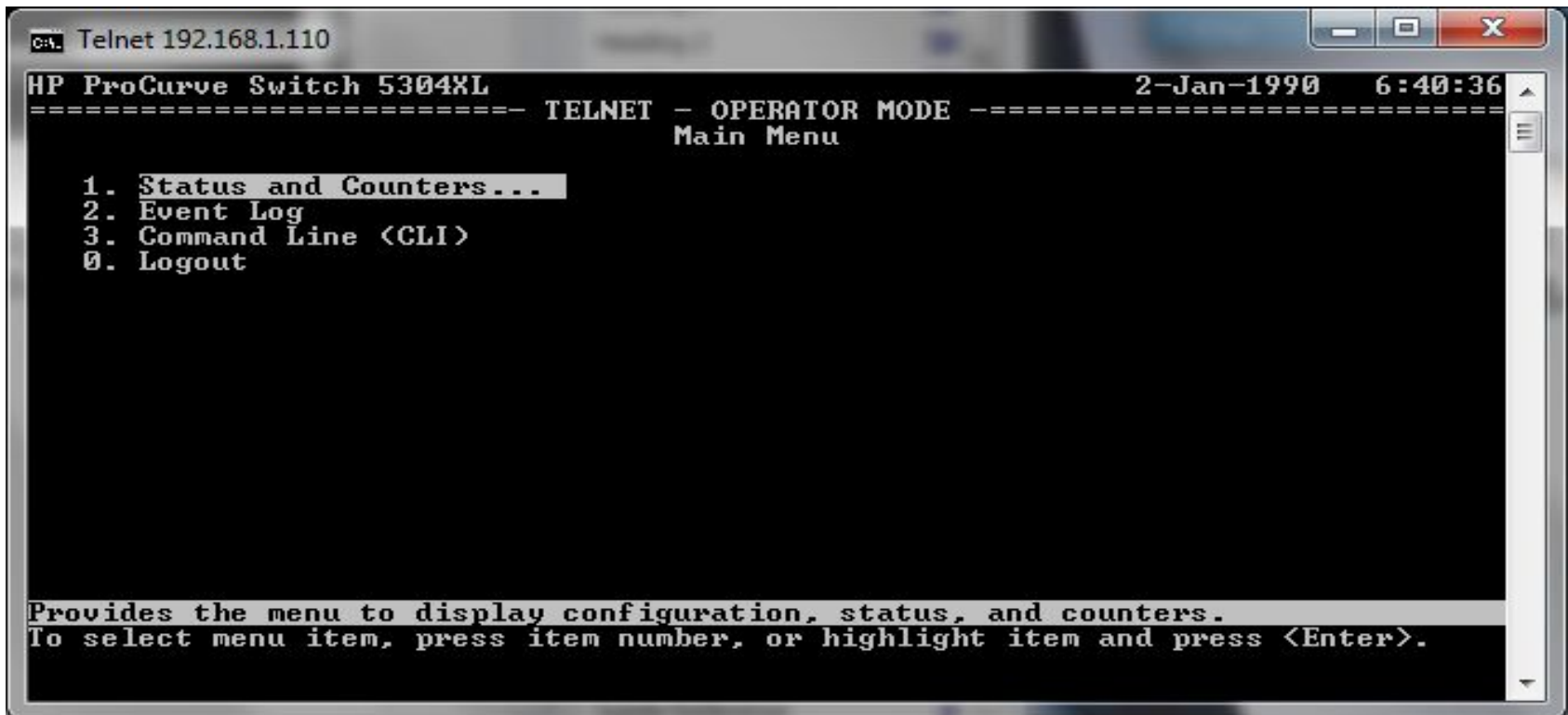
-----+-----+-----+-----
      ULAN      | IP Config | IP Address | Subnet Mask |
-----+-----+-----+-----
DEFAULT_ULAN  | Manual   | 10.12.1.2  | 255.255.255.0 |
DBUsers       | Disabled |             |                 |

Actions->  Cancel   Edit   Save   Help

Select the method to enable IP access for switch management.
Use arrow keys to change field selection, <Space> to toggle field choices,
and <Enter> to go to Actions.
```

# Operator Default Menu

**launch the menu interface from an operator  
CLI prompt**



```

c:\ Telnet 192.168.1.110
HP ProCurve Switch 5304XL                2-Jan-1990   6:40:36
----- TELNET - OPERATOR MODE -----
                          Main Menu
1. Status and Counters...
2. Event Log
3. Command Line <CLI>
0. Logout

Provides the menu to display configuration, status, and counters.
To select menu item, press item number, or highlight item and press <Enter>.

```



# Event Log

- **Information**
- **Warning**
- **Major**
- **Debug**
- **Error**

To view the event log in the CLI, run:

*Show logging*

```
Tera Term - TRN-MRV-CON-02 VT
File Edit Setup Control Window Help
Keys:  W=Warning      I=Information
       M=Major        D=Debug E=Error
----  Event Log listing: Events Since Boot  ----
I 03/08/12 00:37:09 00061 system: -----
I 03/08/12 00:37:09 00063 system: System went down: 03/08/12 00:34:50
M 03/08/12 00:37:09 00064 system: Operator cold reboot from CONSOLE session.
I 03/08/12 00:37:09 02759 chassis: Savepower LED timer is OFF.
I 03/08/12 00:37:09 00092 dhcp: Enabling Auto Image Config Download via DHCP ad
      turning off auto-tftp if enabled
I 03/08/12 00:37:09 00690 udpf: DHCP relay agent feature enabled
I 03/08/12 00:37:09 02637 srcip: TACACS admin policy is 'outgoing interface'
I 03/08/12 00:37:09 02638 srcip: TACACS oper policy is 'outgoing interface'
I 03/08/12 00:37:09 02637 srcip: RADIUS admin policy is 'outgoing interface'
I 03/08/12 00:37:09 02638 srcip: RADIUS oper policy is 'outgoing interface'
I 03/08/12 00:37:09 02637 srcip: SYSLOG admin policy is 'outgoing interface'
I 03/08/12 00:37:09 02638 srcip: SYSLOG oper policy is 'outgoing interface'
I 03/08/12 00:37:09 02637 srcip: TELNET admin policy is 'outgoing interface'
I 03/08/12 00:37:09 02638 srcip: TELNET oper policy is 'outgoing interface'
I 03/08/12 00:37:09 02637 srcip: TFTP admin policy is 'outgoing interface'
I 03/08/12 00:37:09 02638 srcip: TFTP oper policy is 'outgoing interface'
I 03/08/12 00:37:09 02637 srcip: SNMP admin policy is 'outgoing interface'
I 03/08/12 00:37:09 02638 srcip: SNMP oper policy is 'outgoing interface'
I 03/08/12 00:37:09 00110 telnet: telnetd service enabled
-- MORE --, next page: Space, next line: Enter, quit: Control-C
```

# Summary

**Default  
main  
menu**

The diagram consists of two overlapping blue ovals. The left oval contains the text 'Default main menu' and the right oval contains the text 'Operator Default Menu'. The overlapping area is empty.

**Operator  
Default  
Menu**