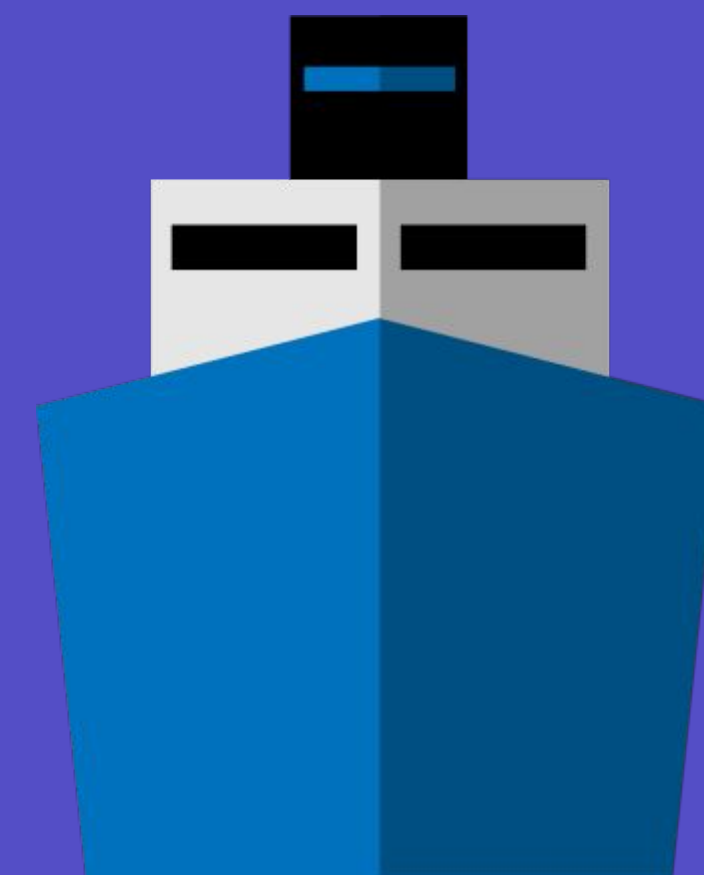
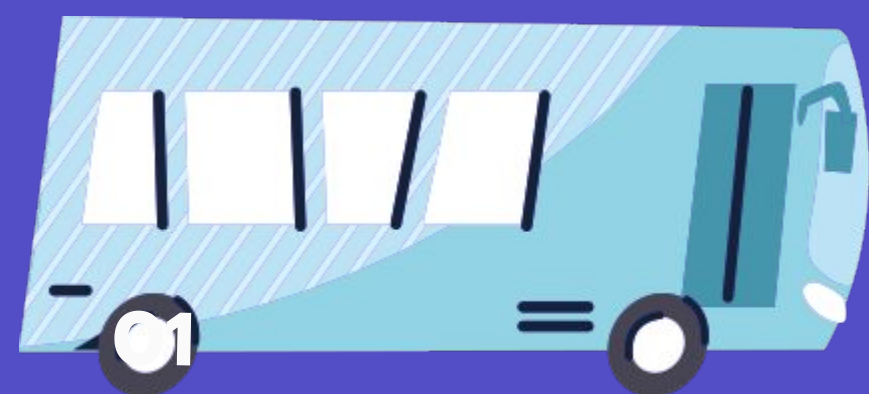




# Project



# Unusual

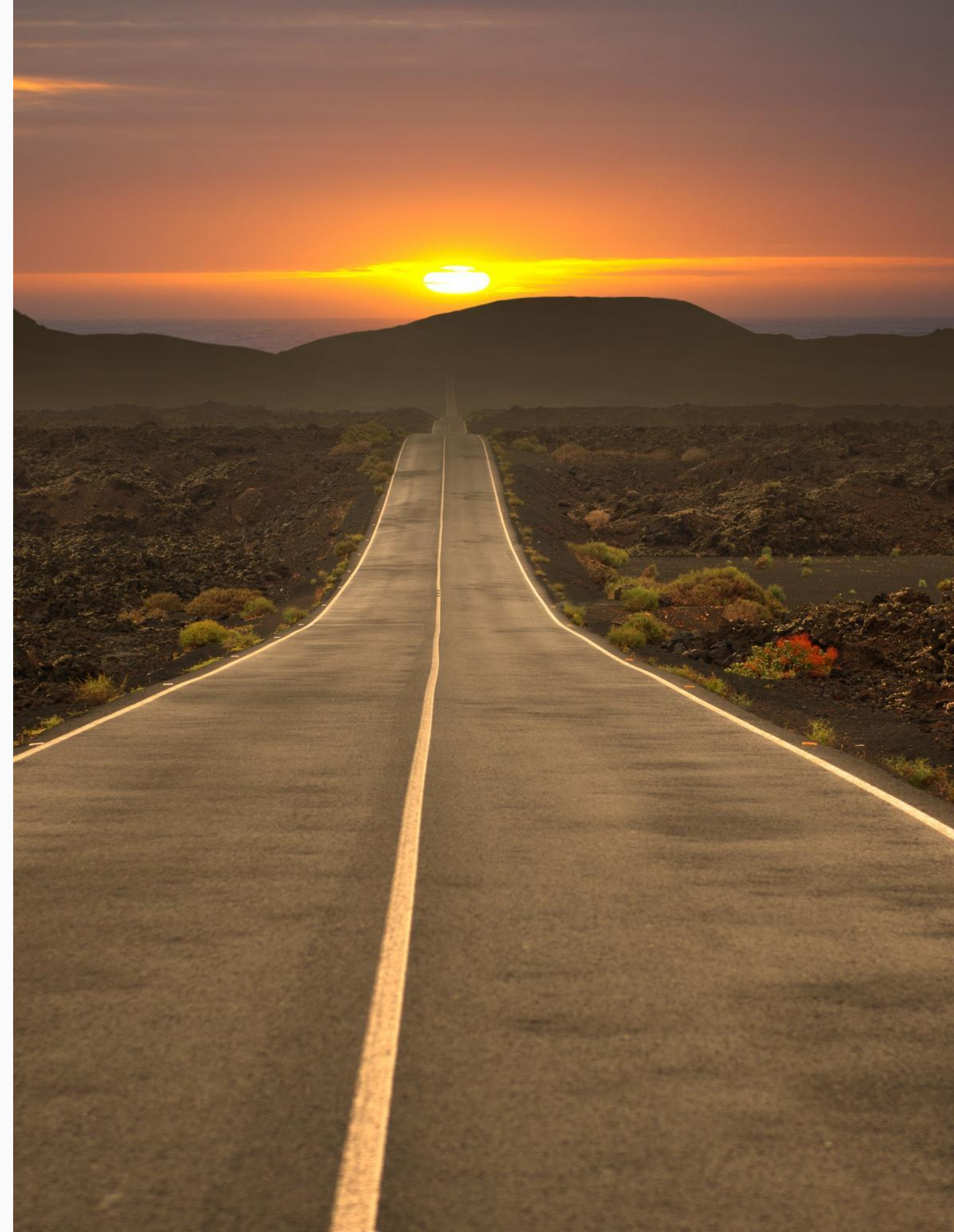
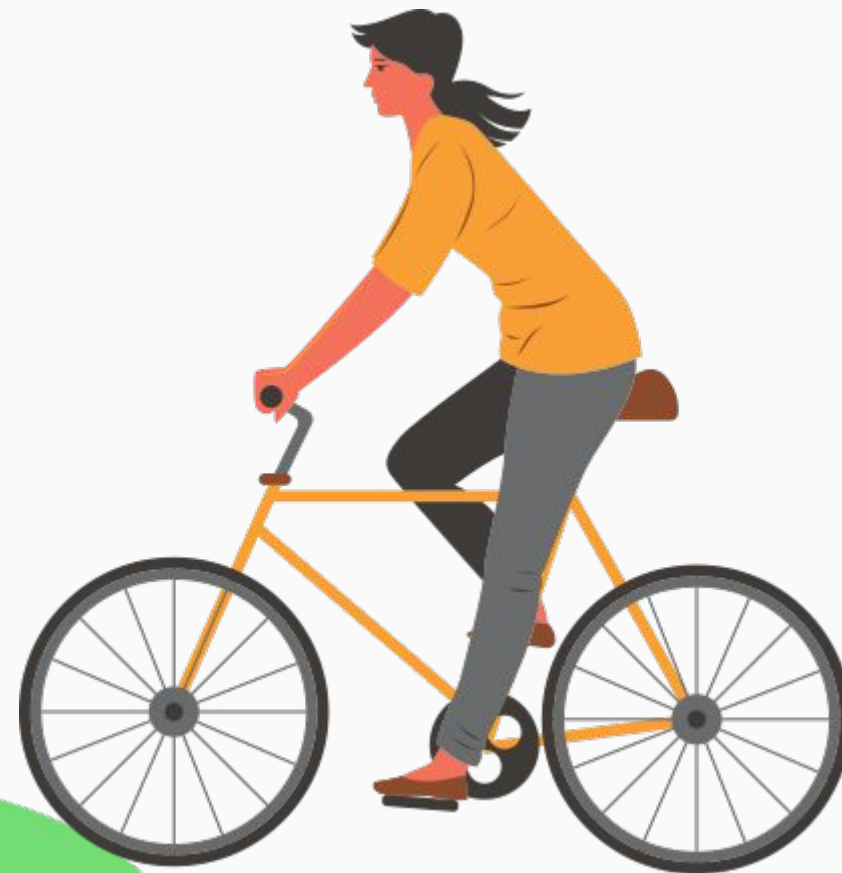


# modes of

# transport

Today I want to introduce  
you to two unusual  
vehicles that surprised me.

Personally, I wanted to ride them. Let's  
see





# PORTUGAL



## Monte toboggan (The sled-baskets)

In the 19th century, people from the mountain village of Toboggan on the island of Madeira wanted a faster route to the city of Funchal. And we chose an original and unusual form of transport — baskets made of willow twigs. They were placed on wooden slats oiled to slide along roads.

This design was driven by two Carreras drivers, traditionally dressed in white trousers and shirts, a straw hat and special shoes with thick soles to brake on turns. And the control was carried out using ropes tied to the rails.

Now such skating has become a popular fun for



The Wuppertal Schwebebahn is the continent's only suspension urban rail line, which for most of its length runs 12 m above the river Wupper (10 km). Only the westernmost section between Sonnborner Straße and Vohwinkel runs 8 meters above streets (3.3 km). This line can be called a full metro line because it's totally independent, absolutely urban and runs on a 4-6 minute headway. For almost 100 years this was one of the safest means of transport in the world, but unfortunately in April 1999 a bad accident happened after repair work had been carried out during the weekend and 3 people lost their lives and more than 40 were injured as a train fell down into the river Wupper. The single rail which carries the train is supported by 472 iron arches that span over the river bed. Currently all these arches are being replaced and also stations are being restored, most of them in their original Jugendstil design.

## HANGING TRAIN - SCHWEBEBAHN



# GERMANY

Thank you!

