




Updating software

1. Double Click  SPMultiPortFlashDownloadProject to enter the process
(this icon is in folder'  MDT_V1620_ForUpgrade ---  SPMultiPortFlashDownloadProject ")

Open download agent file

SmartPhone Multi-port download tool (After-Sale Service Center)

File Option Debug Logging Identity Help

Open Download Agent File
Scatter and Load Setting ...
Open Authentication File
Open Certification File
Open Memory Verification List Excel File

Scatter Files
Scatter File

BootRom+PreLoader COM Sel All

1	<input checked="" type="checkbox"/> COM 3 + COM 4	●	0%	0 S	Start	Stop	■
2	<input type="checkbox"/> COM10 + COM11	●	0%	0 S	Start	Stop	■
3	<input type="checkbox"/> N/A + N/A	●	0%	0 S	Start	Stop	■
4	<input type="checkbox"/> N/A + N/A	●	0%	0 S	Start	Stop	■
5	<input type="checkbox"/> N/A + N/A	●	0%	0 S	Start	Stop	■
6	<input type="checkbox"/> N/A + N/A	●	0%	0 S	Start	Stop	■
7	<input type="checkbox"/> N/A + N/A	●	0%	0 S	Start	Stop	■
8	<input type="checkbox"/> N/A + N/A	●	0%	0 S	Start	Stop	■
9	<input type="checkbox"/> N/A + N/A	●	0%	0 S	Start	Stop	■
10	<input type="checkbox"/> N/A + N/A	●	0%	0 S	Start	Stop	■
11	<input type="checkbox"/> N/A + N/A	●	0%	0 S	Start	Stop	■
12	<input type="checkbox"/> N/A + N/A	●	0%	0 S	Start	Stop	■
13	<input type="checkbox"/> N/A + N/A	●	0%	0 S	Start	Stop	■
14	<input type="checkbox"/> N/A + N/A	●	0%	0 S	Start	Stop	■
15	<input type="checkbox"/> N/A + N/A	●	0%	0 S	Start	Stop	■
16	<input type="checkbox"/> N/A + N/A	●	0%	0 S	Start	Stop	■

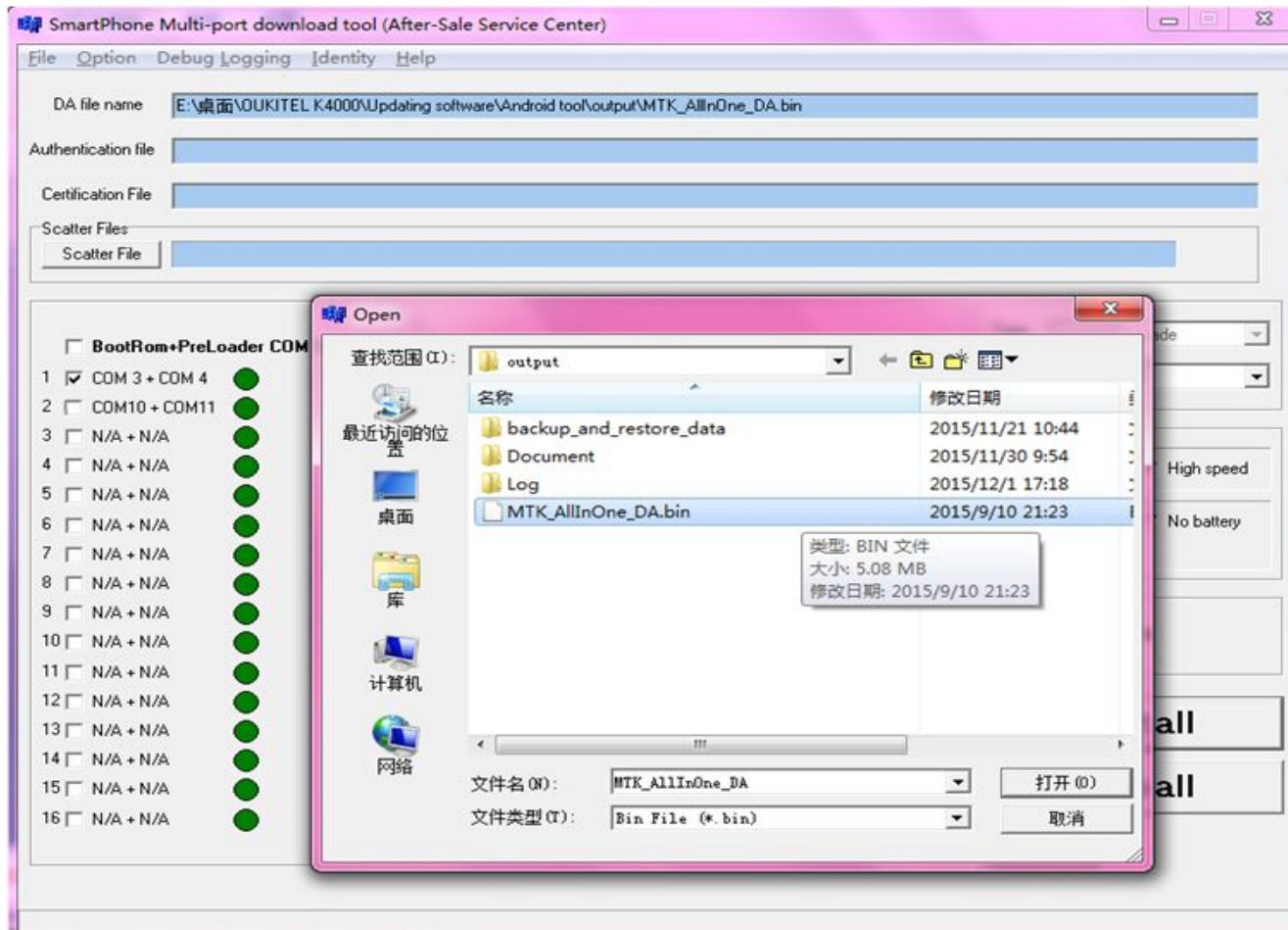
Type: Firmware upgrade
Baud rate: 921600

DA download all
 Full speed High speed
 Battery No battery
 Auto detect

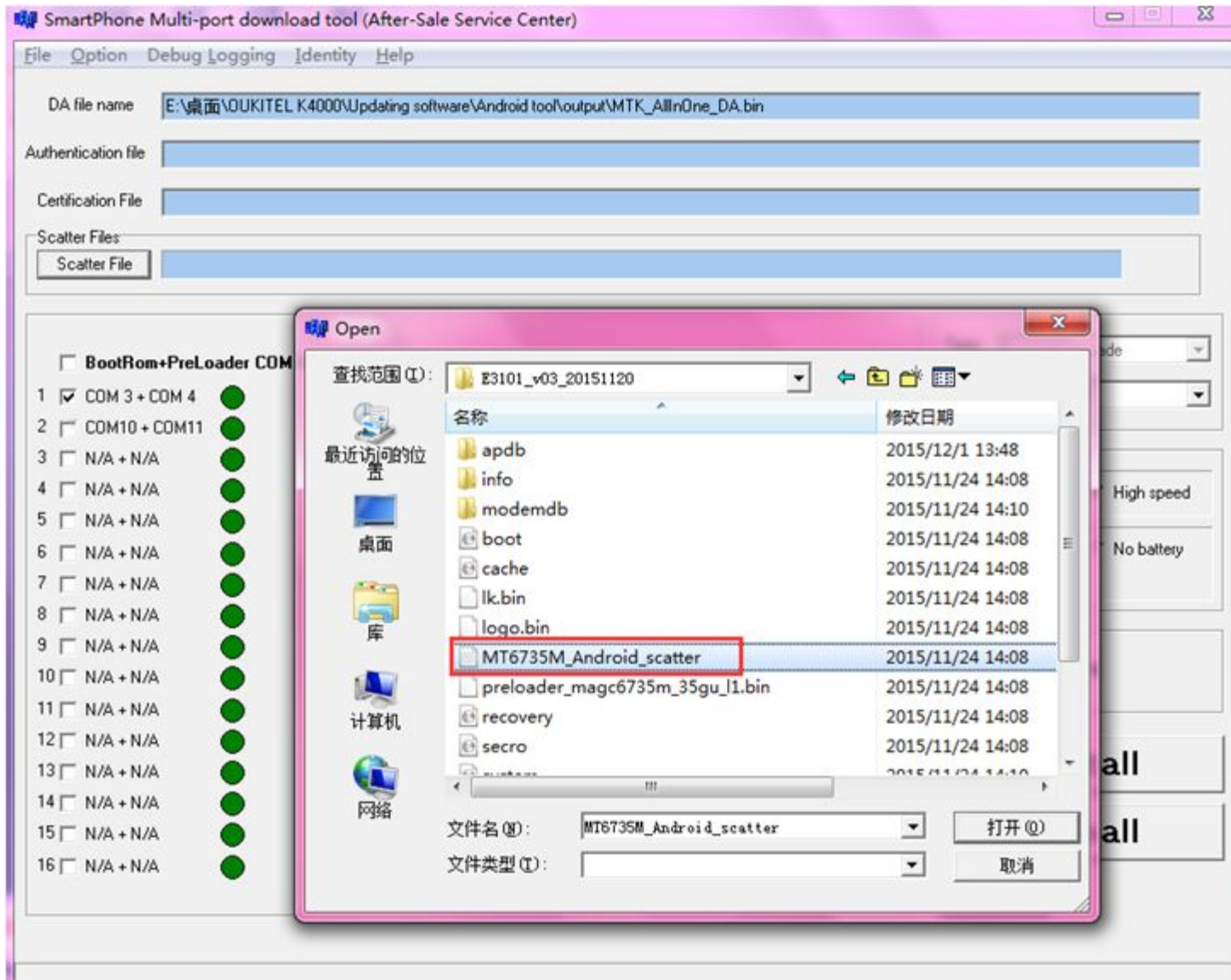
AutoPulling
 EnableAutoPolling

Start all
Stop all
Scan

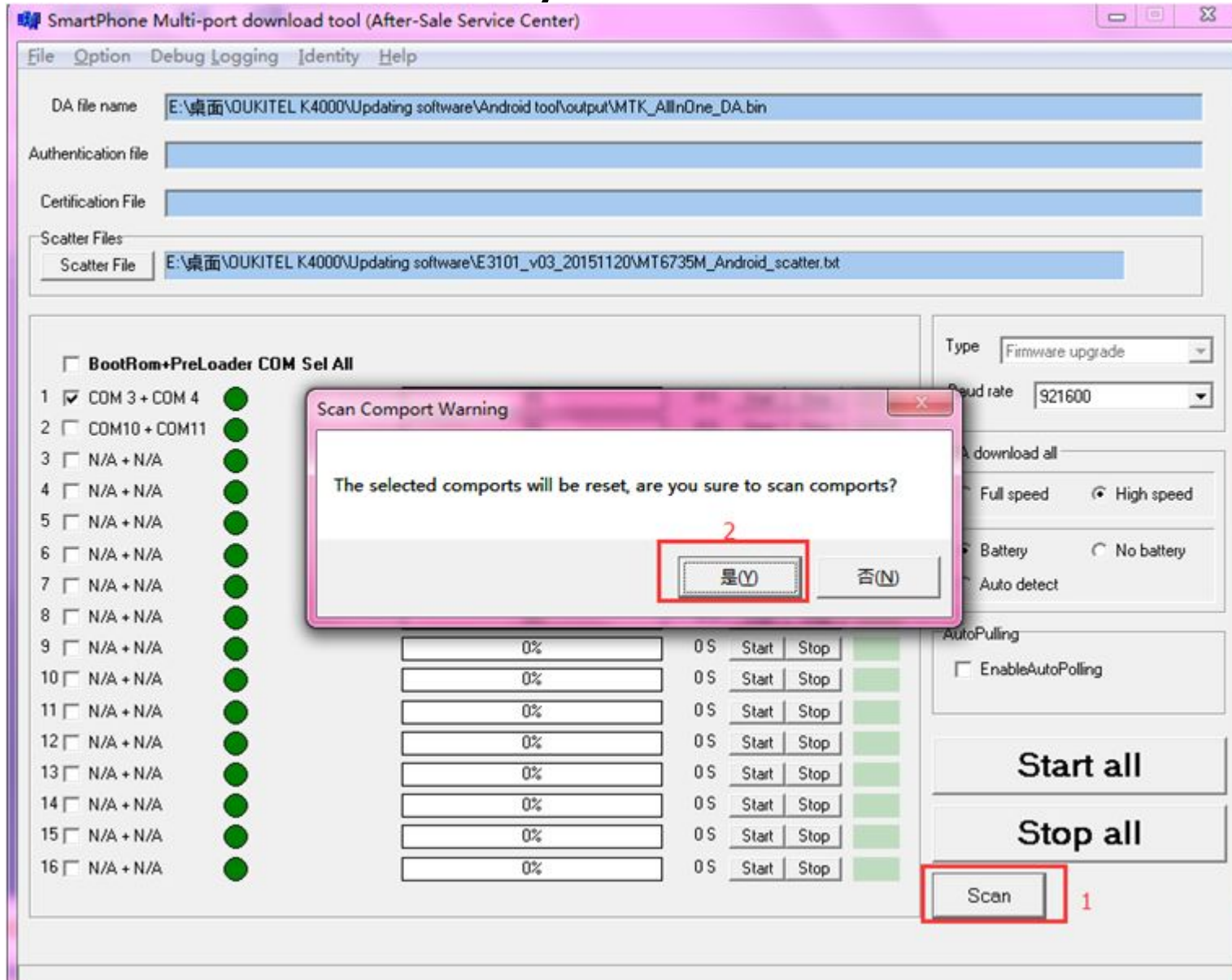
Choose the file “MTK_AllInOne_DA” from the folder” MDT_V1620_ForUpgrade”



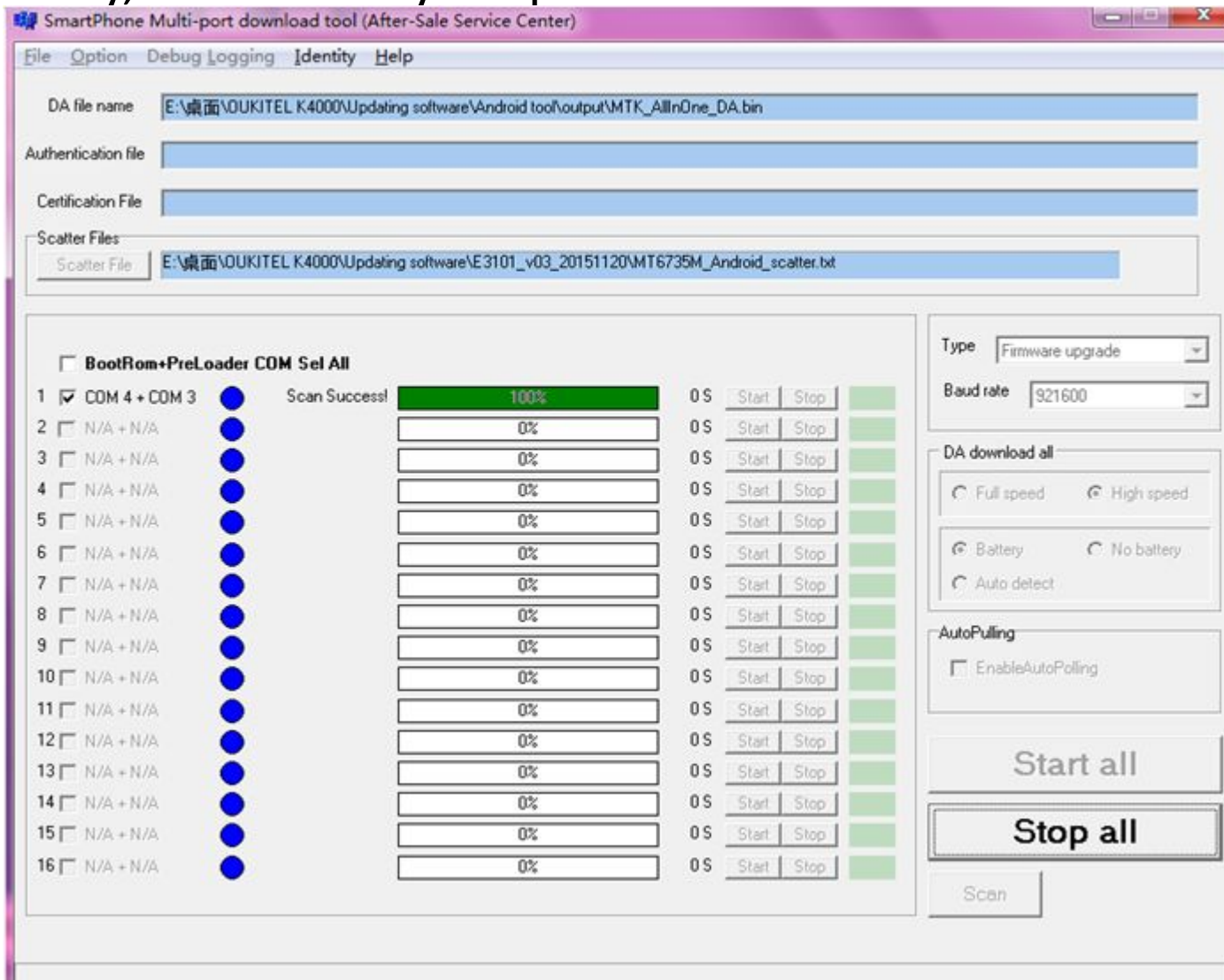
Scatter file- choose the scatter file (this file is in the software folder , it is a txt file.



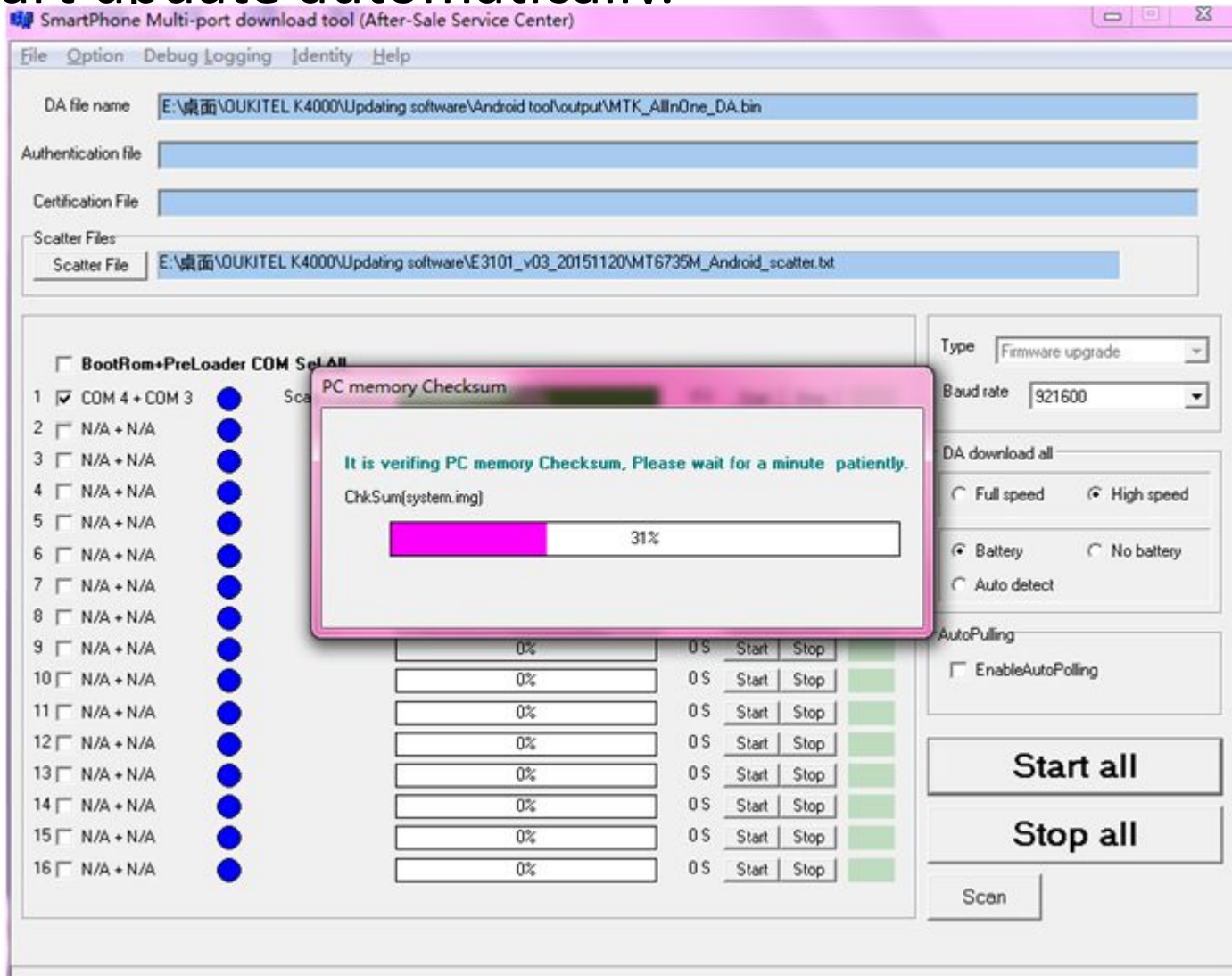
Click Scan, choose yes



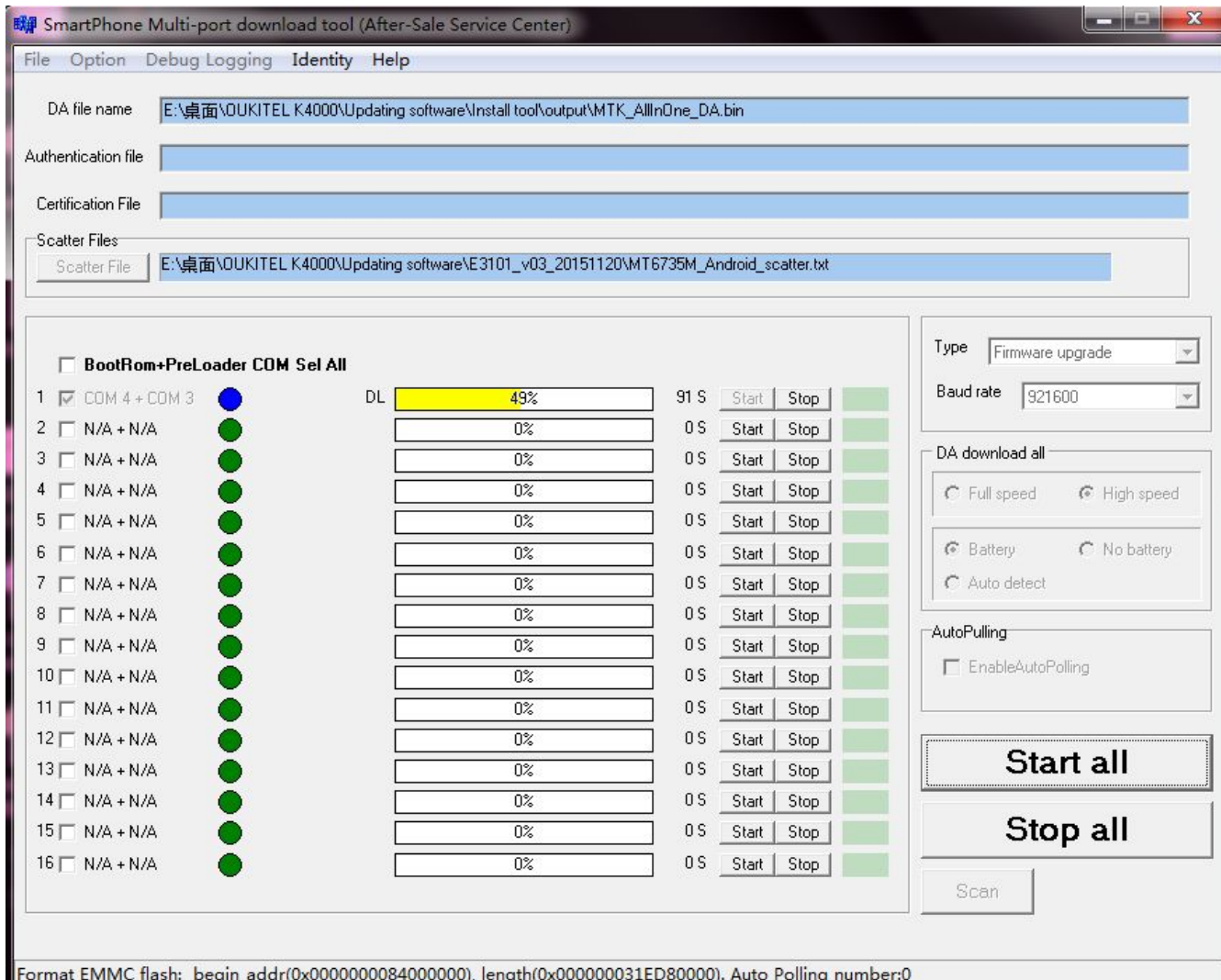
Long press volume+ key (phone in power off state) and connect your phone to computer. When the green bar shows, scan successfully, disconnect your phone now.



Click stop all, then click start all, when the small window finishes, connect your phone to computer . It will start update automatically.



When the first line yellow goes to 100%, updating finishes.



- Note: for the items below, please just choose the first one, leave others as blank.

1	<input checked="" type="checkbox"/>	COM 4 + COM 3
2	<input type="checkbox"/>	N/A + N/A
3	<input type="checkbox"/>	N/A + N/A
4	<input type="checkbox"/>	N/A + N/A
5	<input type="checkbox"/>	N/A + N/A
6	<input type="checkbox"/>	N/A + N/A
7	<input type="checkbox"/>	N/A + N/A
8	<input type="checkbox"/>	N/A + N/A
9	<input type="checkbox"/>	N/A + N/A
10	<input type="checkbox"/>	N/A + N/A
11	<input type="checkbox"/>	N/A + N/A
12	<input type="checkbox"/>	N/A + N/A
13	<input type="checkbox"/>	N/A + N/A
14	<input type="checkbox"/>	N/A + N/A
15	<input type="checkbox"/>	N/A + N/A
16	<input type="checkbox"/>	N/A + N/A