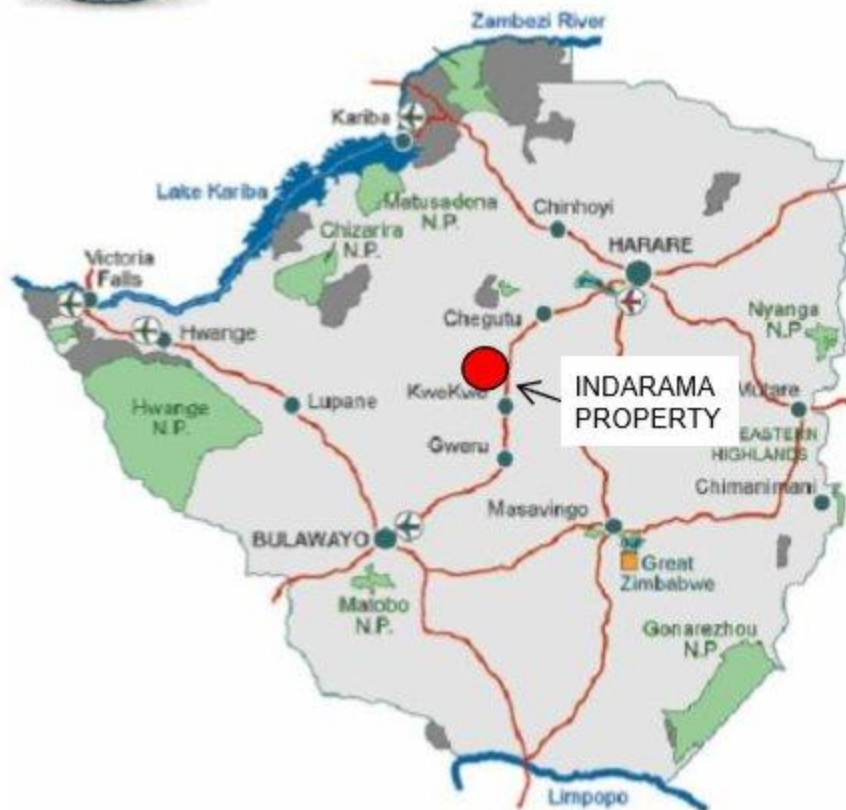
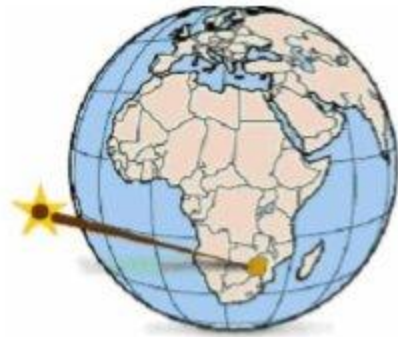


# Indarama Gold Mine



- Produced 25 tonnes of gold.
- Property extensively drilled in 1998.
- Not operated since 1999.
- 1998 Resource Statement - Valid
- Most underground working flooded – classified as resource
- Refractory, free milling oxides and Heap leachable oxides
- 3-5t/h Bio Leach Plant on site and successfully ran
- 2.2 Million Oz Resource Declared
- JORC Compliant

# Project Location

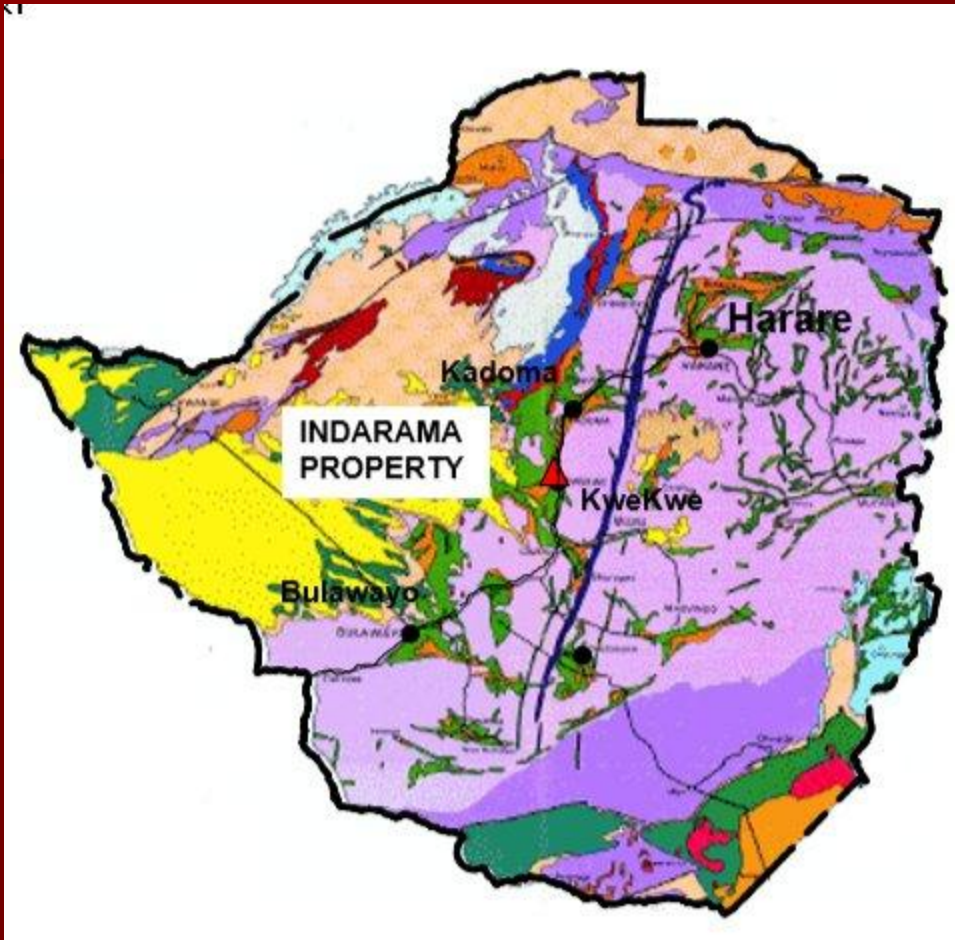


- The property is located 200 kilometers south of Harare near the town of Kwe Kwe in Zimbabwe
- Currently owned by Pan Reef Mining Company (Pvt) Limited, a Zimbabwean company.

# Project History

- The Indarama property comprises a number of deposits in the Kwe Kwe gold belt within the Archean Midlands greenstone belt.
- Mine first opened in 1921, and was last mined from open pit and underground in 1999 by Trillion Consolidated Resources Ltd.
- Cumulative production is estimated at 26,000 kg gold (836,000 ounces).
- Trillion closed the mine in 1999 and there has been no mining conducted since.
- Currently the property is on care and maintenance,
- No exploration work has been carried out since 1999.
- Recent work has consisted of compiling and modeling the available data to support estimation of mineral resources.
- Trillion Declared a Resource Reserve Statement in 1998. No Mining Since 1999
- In 2010 – Coffee Mining Issued a JORC Compliant Resource Statement

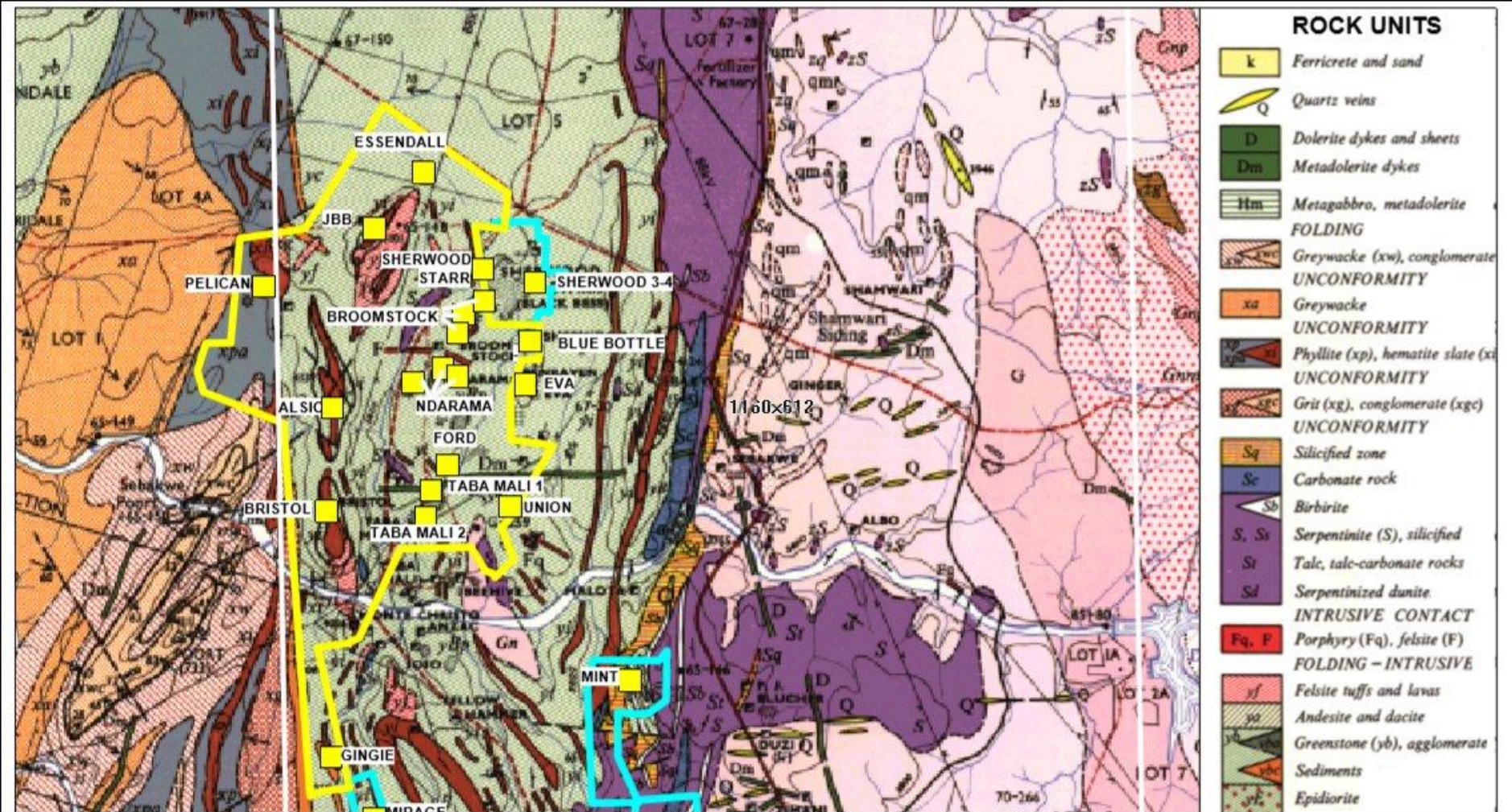
# Regional Geology



- The Indarama property is situated in the central part of the Midlands Greenstone Belt (MGB)
- Largest of Zimbabwe's Archaean greenstone belts, extending 150 km N-S by 50 km wide.
- The MGB continues southwards into the Gweru Greenstone Belt and merges with the Chegutu Greenstone Belt in the north-east.



# Mine Geology



- Typical Granite (Rhodedale Granite) Greenstone Belt association with N-S trending Shears controlling mineralisation on mines in Indarama Area
- Indarama Mining Lease is composed of several gold deposits
- 2 Major shears pass through Mining Lease – Sherwood and Taba Mali Shear Zone

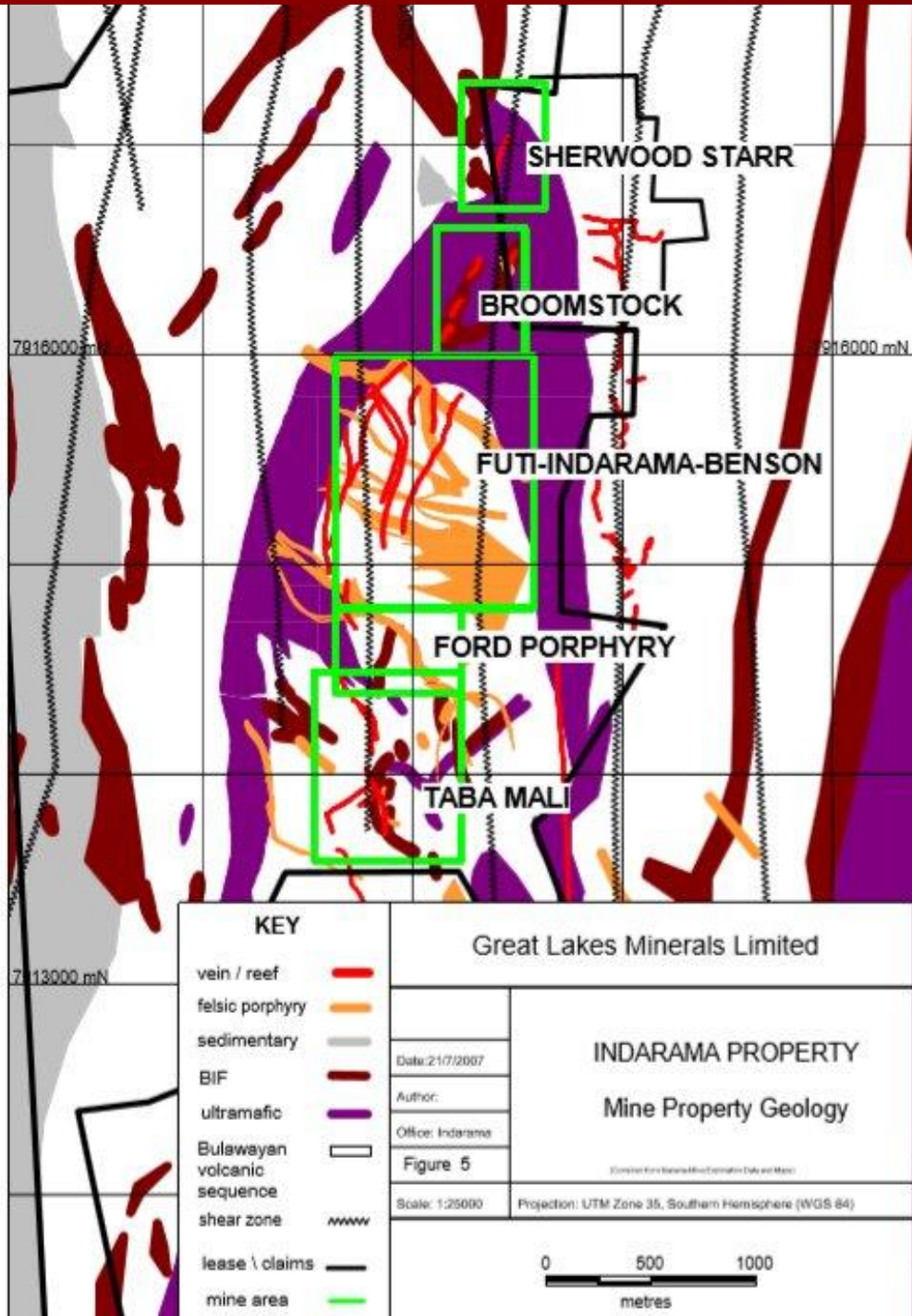


# Indarama Simplified Mine Geology

Deposits are orogenic lode gold type classified as greenstone hosted quartz-carbonate vein deposits.

Greenstone hosted quartz-carbonate vein (GQC) deposits represent includes :

1. Iron-formation hosted vein and disseminated deposits,
2. Turbidite-hosted Quartz carbonate vein deposits.
3. The weathering profile is locally deep and results in extensive surface oxidation creating surface oxide zone and a deeper sulphide zone.



# Indarama Mine Deposit Types

Three ore types according to their metallurgical characteristics:

1. **Refractory Ores** - reef ore containing As and Sb minerals, typified by 10-15% free gold recovery by gravity - suitable for autoclave or bio-leach processing – Sherwood Star, Futi, Indarama, Benson and Tabamali 1 & 2
2. **Oxide Ore** - oxidized caps on reef ores - typified by 10-15% free gold recovery by gravity • suitable for cyanide leach processing (Sherwood 3 & 4, Ford Tabamali, Broomstock)
3. **Free Milling Ores** - porphyry ore with sulphide-hosted gold - suitable for milling and cyanide recovery. Futi, Indarama and Benson

# Indarama Mine Feasibility Study

Feasibility Study Completed in 1998 – Trillion Resources Ltd

## **Total Metres Drilled**

**50,000m** of Drilling completed on Indarama over 18 Months

## **Total Resource Declared (2010)**

Total Resource Declared – **32 Million Tons** @ 2.45g/t on a 0.8g/t gold cut off grade

Total of **2.6 Million** Ounces of which **1.8 Million** Oz is in the Measured and Indicated



# Indarama Mine Mineral Resource Tabulation – 2010

**Table 1: Mineral resource tabulation**

Area	Cut-off gold g/t	Measured			Indicated			Inferred			Total		
		Tonnes	Grade	Ounces	Tonnes	Grade	Ounces	Tonnes	Grade	Ounces	Tonnes	Grade	Ounces
Ford	0.8	5,211,936	2.27	380,802	4,842,536	2.11	328,277	192,696	1.96	12,169	10,247,167	2.19	721,249
	0.9	5,071,999	2.31	376,974	4,761,642	2.13	326,058	190,972	1.97	12,123	10,024,613	2.22	715,155
	1.0	4,926,604	2.35	372,538	4,653,343	2.16	322,746	190,580	1.98	12,110	9,770,526	2.25	707,394
Taba Mali	0.8	3,849,969	2.08	257,712	1,038,675	2.00	66,704	-	-	-	4,888,644	2.06	324,416
	0.9	3,591,721	2.17	250,681	938,491	2.12	63,975	-	-	-	4,530,212	2.16	314,655
	1.0	3,356,479	2.26	243,488	856,076	2.23	61,439	-	-	-	4,212,555	2.25	304,927
Taba Mali Extension	0.8	-	-	-	-	-	-	1,422,606	3.24	148,178	1,422,606	3.24	148,178
	0.9	-	-	-	-	-	-	1,422,606	3.24	148,178	1,422,606	3.24	148,178
	1.0	-	-	-	-	-	-	1,422,606	3.24	148,178	1,422,606	3.24	148,178
Broomstock	0.8	2,182,336	2.46	172,898	1,240,076	2.03	80,741	250,819	1.52	12,240	3,673,231	2.25	265,880
	0.9	2,111,486	2.52	170,962	1,200,778	2.06	79,671	250,819	1.52	12,240	3,563,084	2.29	262,872
	1.0	2,019,426	2.59	168,139	1,161,401	2.10	78,471	249,151	1.52	12,187	3,429,978	2.35	258,797
Sherwood	0.8	-	-	-	1,258,052	3.08	124,683	-	-	-	1,258,052	3.08	124,683
	0.9	-	-	-	1,017,968	3.61	118,092	-	-	-	1,017,968	3.61	118,092
	1.0	-	-	-	797,575	4.35	111,418	-	-	-	797,575	4.35	111,418
Benson	0.8	92,715	4.98	14,841	53,850	4.77	8,255	12,510	4.03	1,619	159,076	4.83	24,715
	0.8	92,715	4.98	14,841	53,850	4.77	8,255	12,510	4.03	1,619	159,076	4.83	24,715
	1.0	92,715	4.98	14,841	53,850	4.77	8,255	12,510	4.03	1,619	159,076	4.83	24,715
Indarama	0.8	722,633	5.75	133,622	2,271,954	3.26	238,304	1,523,277	2.29	112,338	4,517,864	3.33	484,264
	0.9	715,707	5.80	133,432	2,245,451	3.29	237,575	1,446,616	2.37	110,212	4,407,774	3.40	481,219
	1.0	710,480	5.83	133,271	2,185,779	3.35	235,769	1,404,666	2.41	108,907	4,300,925	3.46	477,947
Futi	0.8	-	-	-	1,537,858	2.48	122,513	3,715,769	2.41	288,460	5,253,627	2.43	410,973
	0.9	-	-	-	1,523,567	2.49	122,120	3,623,385	2.45	285,915	5,146,951	2.47	408,035
	1.0	-	-	-	1,504,892	2.51	121,547	3,525,535	2.50	282,931	5,030,427	2.50	404,478
MacDonald	0.8	28,407	6.86	6,263	70,277	7.35	16,618	764,548	3.23	79,517	863,232	3.69	102,399
	0.9	28,407	6.86	6,263	70,277	7.35	16,618	764,548	3.23	79,517	863,232	3.69	102,399
	1.0	28,407	6.86	6,263	70,277	7.35	16,618	764,548	3.23	79,517	863,232	3.69	102,399
Total	0.8	12,087,996	2.49	966,138	12,313,278	2.49	986,097	7,882,226	2.58	654,522	32,283,500	2.51	2,606,757
	0.9	11,612,035	2.55	953,153	11,812,024	2.56	972,364	7,711,457	2.62	649,803	31,135,517	2.57	2,575,320
	1.0	11,134,111	2.62	938,540	11,283,193	2.64	956,263	7,569,596	2.65	645,450	29,986,900	2.63	2,540,253

# Indarama Mine – 1999 Trillion Resource Statement

INDARAMA MINE - AU RESOURCE,  
December 1<sup>st</sup>, 1998

DEPOSIT

	Cut-off		Measured			Indicated			Inferred			Total		
	g/T Au	s.g.	Tonnes	g/T Au	Au kg	Tonnes	g/T Au	Au kg	Tonnes	g/T Au	Au kg	Tonnes	g/T Au	Au kg
FUTI-INDARAMA-BENSON	6.00	2.70	99,872	8.69	868	199,201	7.51	1,496	2,095,190	6.29	13,179	2,394,263	6.49	15,543
TABAMALI 1&2	3.00	2.70	233,640	6.17	1,442	238,452	5.47	1,304	108,670	5.94	645	580,762	5.84	3,391
BROOMSTOCK REFRACTORY	2.50	2.80	671,446	5.40	3,626	268,915	4.06	1,092	107,500	4.80	516	1,047,861	4.99	5,234
Sub-Total REFRACTORY			1,004,958	5.91	5,935	706,568	5.51	3,892	2,311,360	6.20	14,340	4,022,886	6.01	24,168
FORD	1.00	2.70	4,496,655	2.18	9,785	1,241,406	2.48	3,079	771,465	2.30	1,774	6,509,526	2.25	14,638
TABAMALI OXIDES	0.50	2.40				467,508	1.18	552				467,508	1.18	552
SHERWOOD 3-4 OXIDES	0.50	2.40				55,000	1.33	73				55,000	1.33	73
BROOMSTOCK OXIDES	0.50	2.40				154,168	1.06	163	850,000	1.00	850	1,004,168	1.01	1,013
Sub-Total OXIDES			4,496,655	2.18	9,785	1,918,082	2.02	3,867	1,621,465	1.62	2,624	8,036,202	2.03	16,276
TOTAL			5,501,613	2.86	15,720	2,624,650	2.96	7,759	3,932,825	4.31	16,965	12,059,088	3.35	40,444

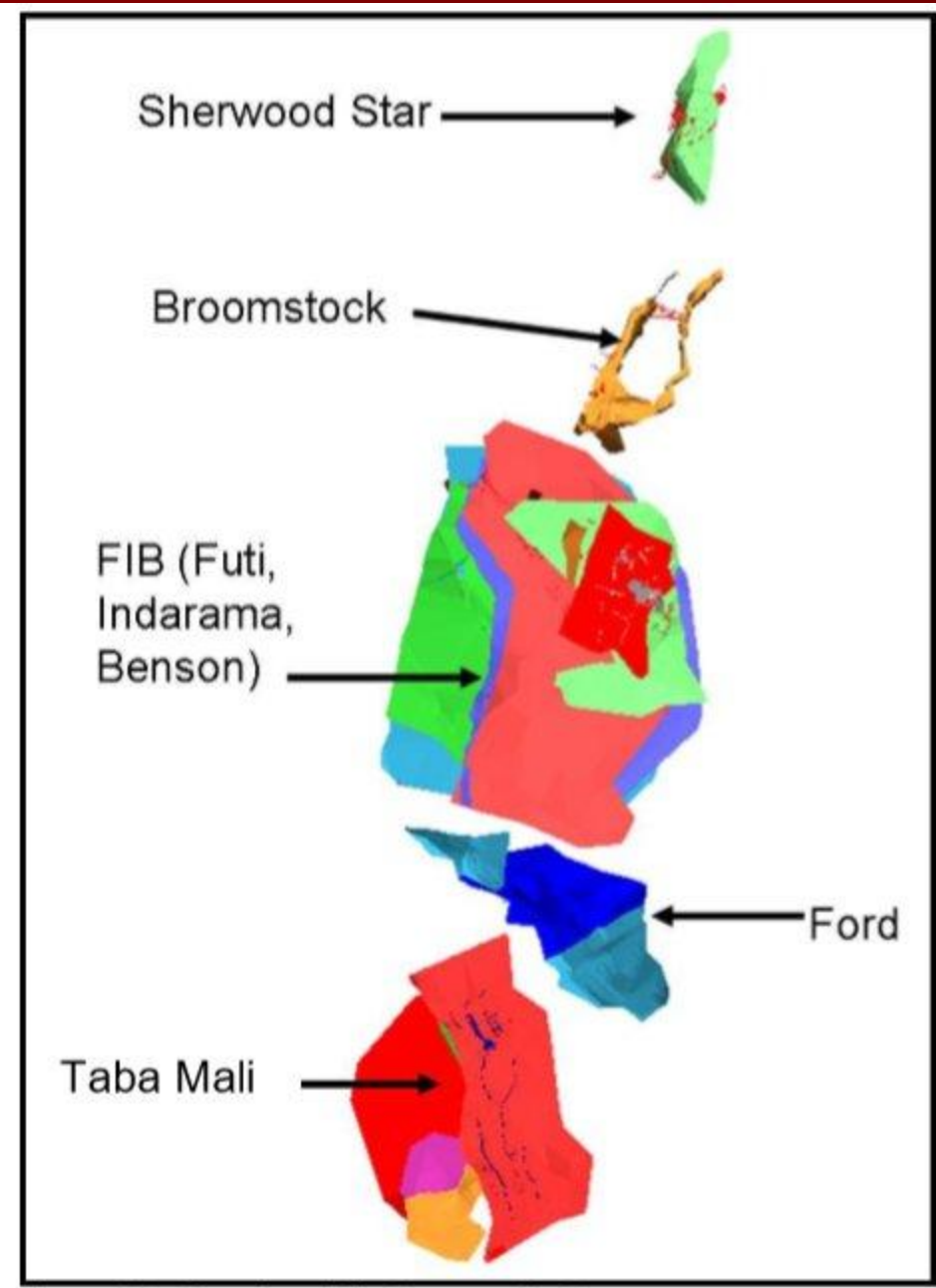
INDARAMA MINE - AU RESERVES,  
December 1<sup>st</sup>, 1998

DEPOSIT

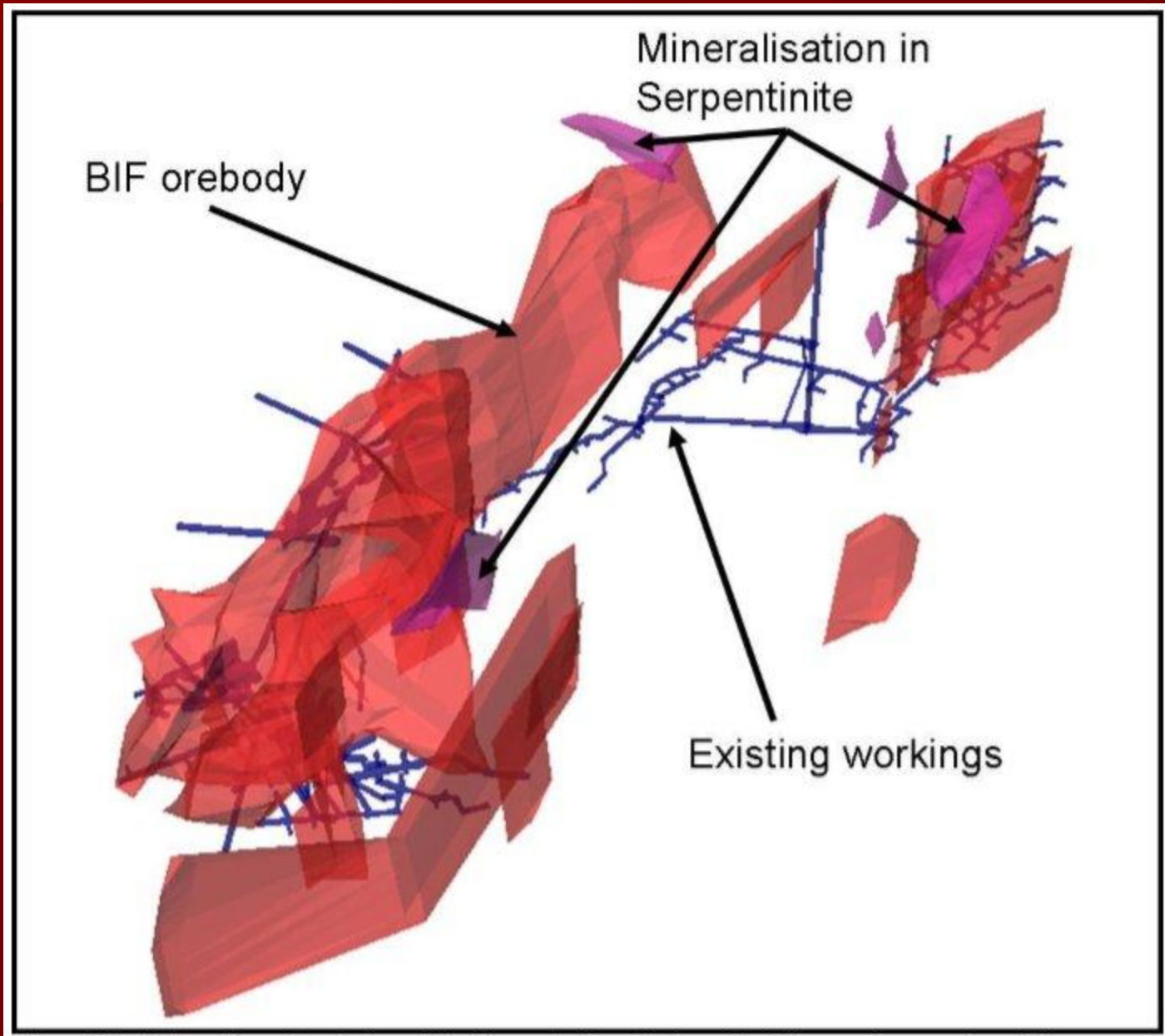
	Cut-off	s.g.	Proved			Probable			Inc. dilution	Total		
			Tonnes	g/T Au	Au kg	Tonnes	g/T Au	Au kg		Tonnes	g/T Au	Au kg
FORD	1	2.70	4,963,385	2	9,966			5	4,963,385	2.01	9,966	
FUTI-INDARAMA-BENSON	6	2.70	99,872	9	868	199,201	7.51	1,496	30	299,073	7.90	2,364
TABAMALI	3	2.70	14,088	3	44	107,554	4.11	442	20	121,642	4.00	486
BROOMSTOCK REFRACTORY	3	2.80	772,163	5	3,629	309,252	3.53	1,092	15	1,081,415	4.37	4,721
Total			5,849,507	2	14,507	616,007	15	3,030		6,465,514	2.71	17,537

• Oxides Resource – Tabamali. Sherwood 3-4, Broomstock – 16 tons of gold (0.5Mil Oz)

# Indarama Ore Bodies Composite Plan – 2010

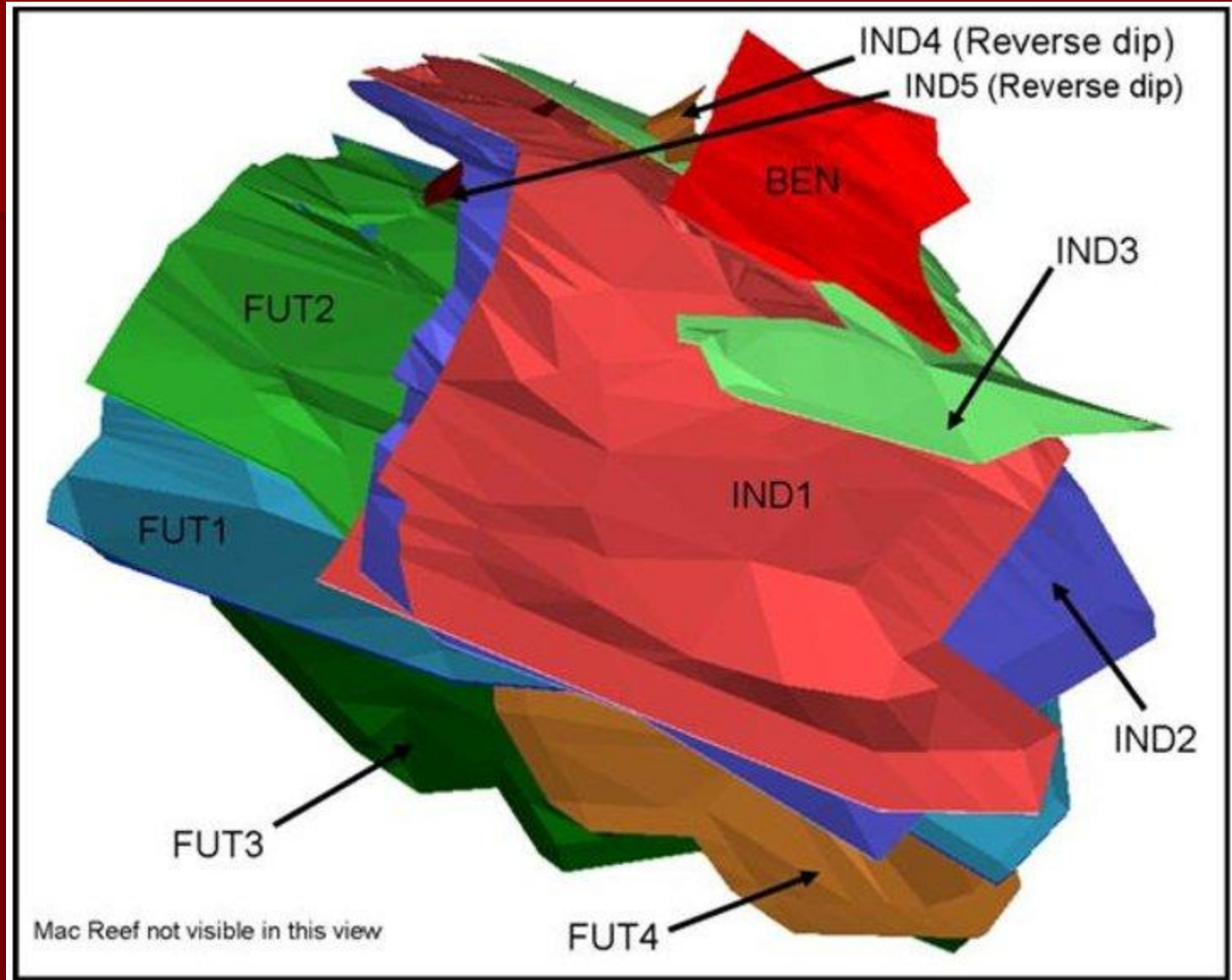


# Broomstock Ore Body 3 D Models – 2010

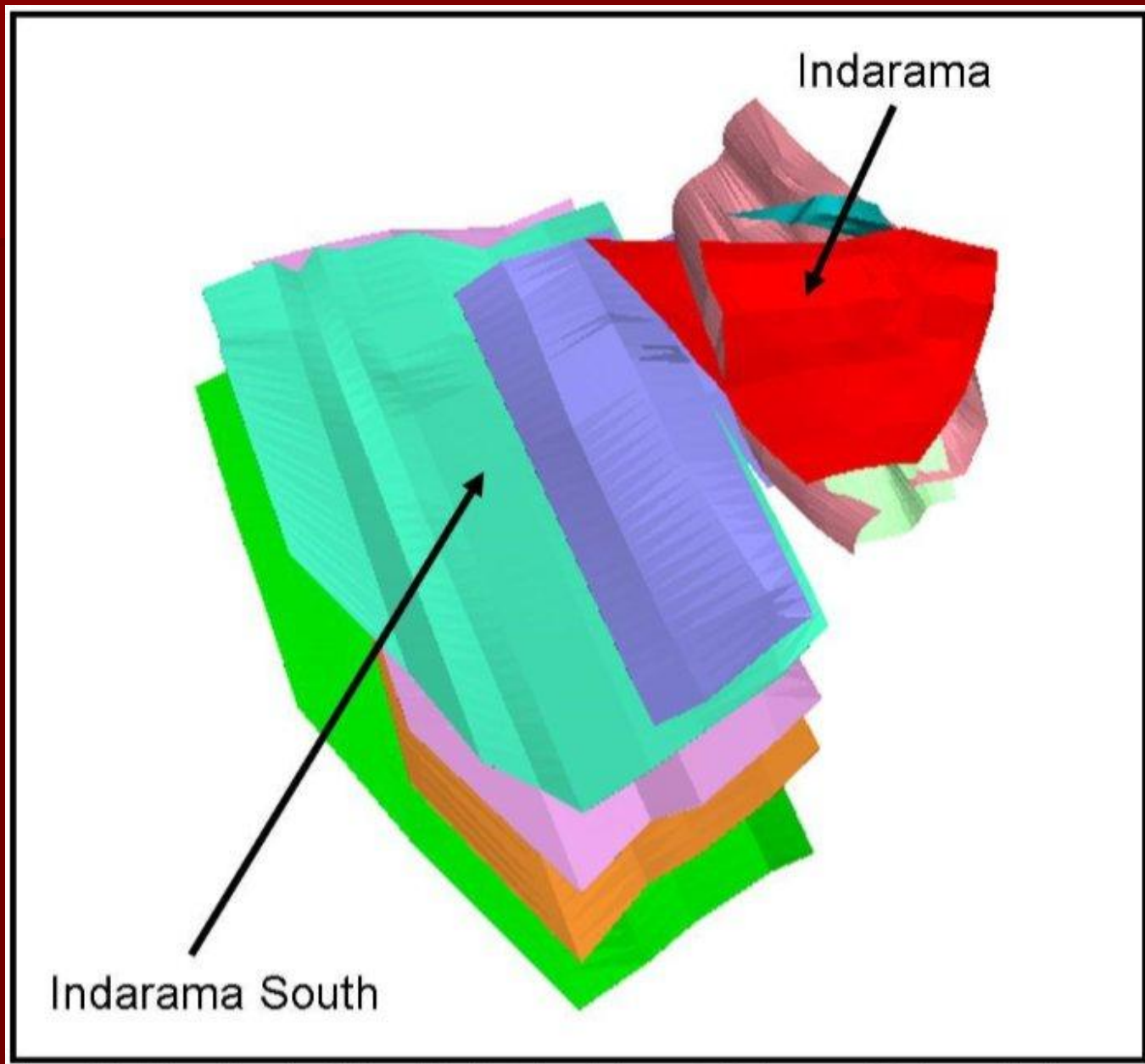




# Indarama Ore Body 3 D Models – 2010



# Indarama Orebody Composite Wire Frames – 2010



# Indarama Mine Ore Body Data Stats – Search Parameters – 2010

Deposit	Search Distance			Search Angles			Around Axis		
	1	2	3	1	2	3	1	2	3
Ford	251	251	9	40	0	45	Z	Y	X
Broomstock	101.6	101.6	101.6	0	0	0	Z	Y	X
Benson	45.6	45.6	45.6	0	0	0	Z	Y	X
Futi 1	75	75	75	0	0	0	Z	Y	X
Futi 2	62.5	62.5	62.5	0	0	0	Z	X	X
Futi 3	60	60	60	0	0	0	Z	Y	X
Futi 4	60	60	60	0	0	0	Z	Y	X
Indarama 1	81.5	81.5	81.5	0	0	0	Z	Y	X
Indarama 2	53	53	53	0	0	0	Z	X	Z
Indarama 3	75	75	75	0	0	0	Z	X	Z
Indarama 4	32	32	32	0	0	0	Z	X	Z
Indarama 5	25	25	25	0	0	0	Z	X	Z
MacDonald	49	49	49	0	0	0	Z	X	Z

# Existing Process On-site facilities

1. **Indarama mill** – Capacity of 120 t/day for processing underground refractory ore.
2. **Bioleach plant** – Capacity of 5 t/day for oxidizing Indarama mill concentrates prior to cyanidation.
3. **Tailings treatment plant** – capable of processing 600 t/day of Indarama slimes.
4. **Broomstock mill** – Capacity of 700 t/day for milling oxide ore from the Broomstock open pit or free milling sulphide from the Ford open pit.
5. **Heap leach pad** - for exploitation of lower grade oxide ores.
6. **Caustic leach facility** – to extract 10t/month of antimony metal.



# Indarama Mine – Key Steps

- Key Documents have been secured – Competent Person Reports  
Submit the 3 reports to Geoinvest 28 Feb.
- Internal Review completed and Data to be passed to GeoInvest
- If interest is generated then organize site visits and proceed with transaction
- Get the Entire Drill Database from Owner for GeoInvest to validate tonnages
- Current asset valuation is US\$18-20 Million
- Huge upside for a 3 Million Oz deposit
-