

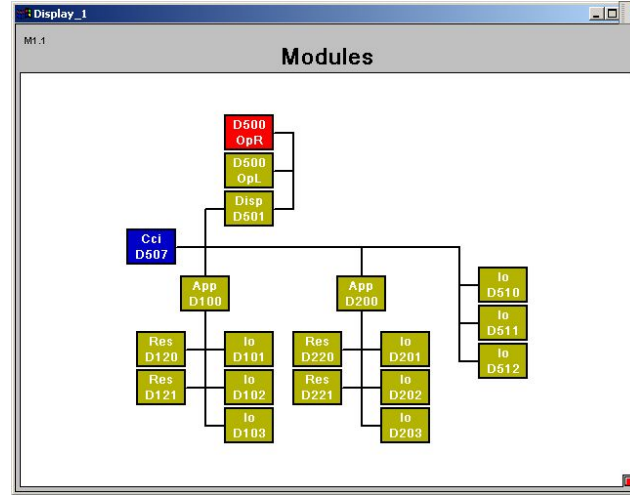
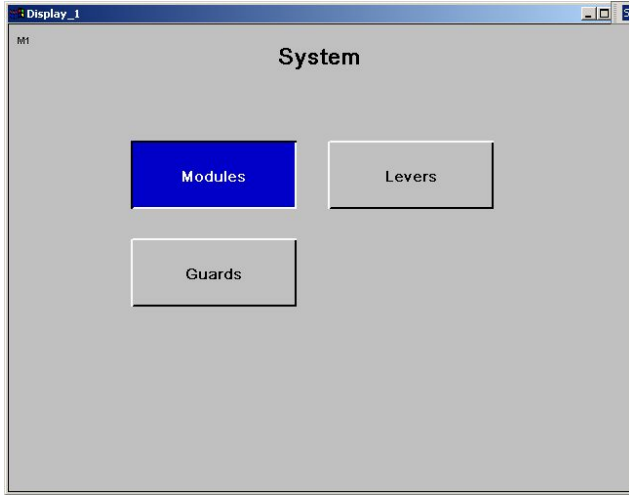
Fault finding



Systematic fault finding

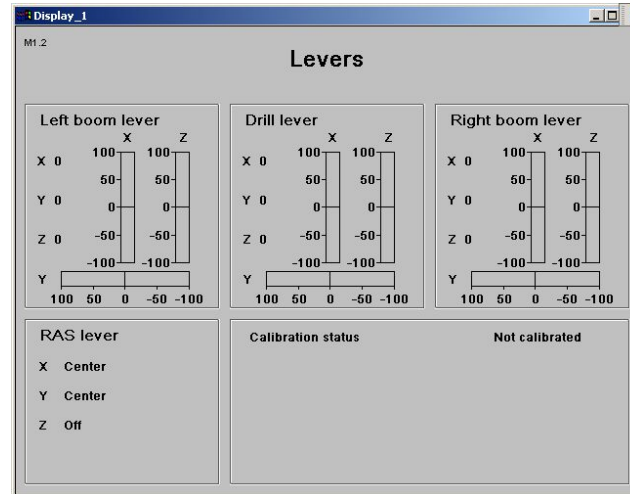
Fault finding

Integrated diagnostics



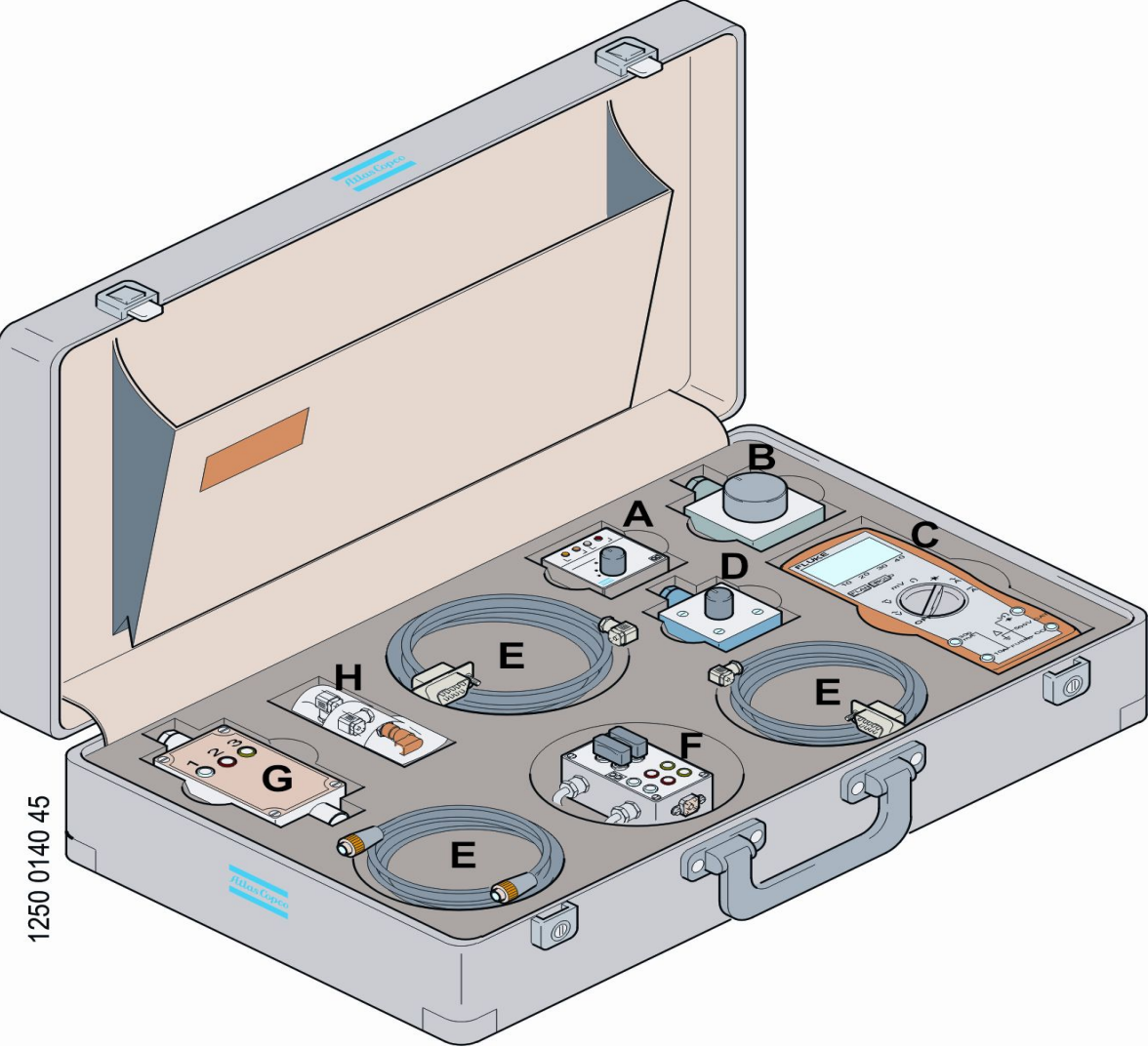
Guards monitoring table for Boom 1. The table lists various sensors, their values, modules, contacts, and markings.

Sensor	Value	Module	Contact	Marking
Emergency stop tripped	0	D510	X11a	S133
Hydraulic oil filter clogged	0	D510	X24a	B139
Power supply alarm	0	D512	X8	B187
Hydraulic oil level low	0	D512	X14	B143
Hydraulic oil temperature high	0	D512	X6	B362
Compressor temperature high	0	D510	X24b	B366.1
Extra compressor temperature high	0	D512	X17	B366.2
Lubrication oil level low	0	D511	X16a	B380
<hr/>				
Diesel engine	0	D510	X11b	B373
Electric motor	0	D510	X16a	B186:1

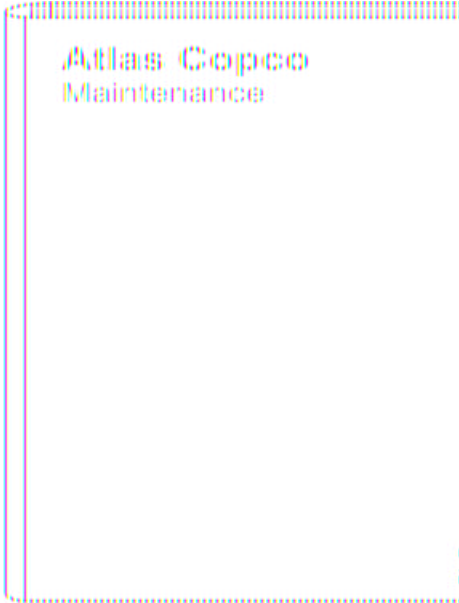


Fault finding

Tools / Instructions

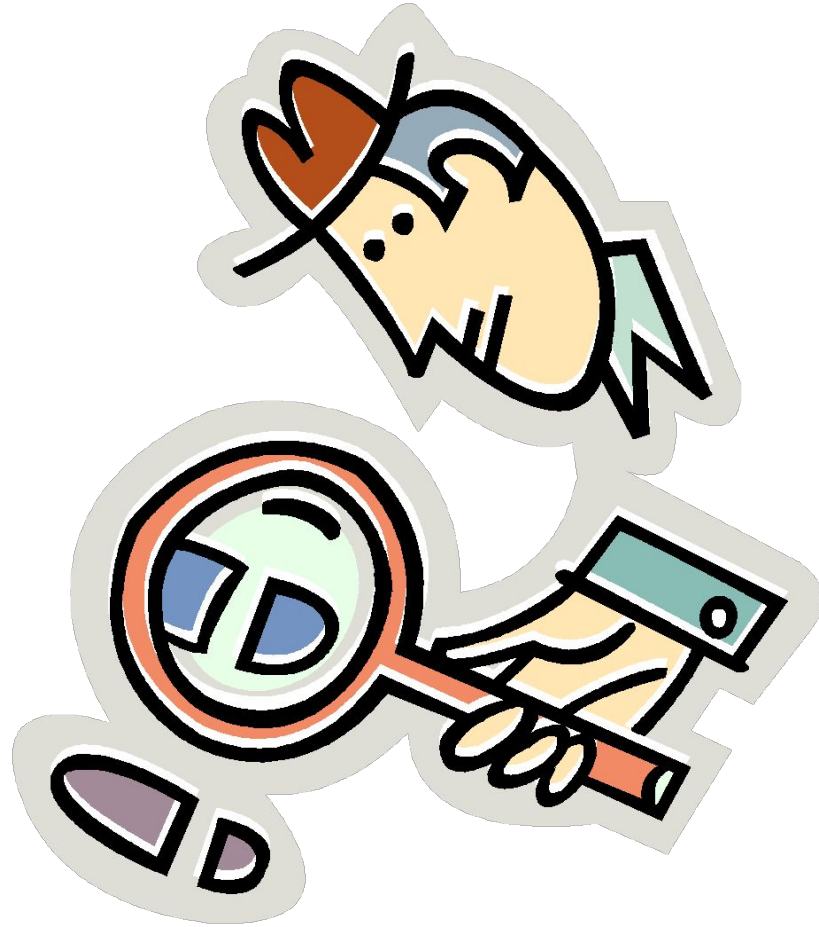


1250 0140 45



Systematic fault finding

Theory



Systematic fault finding

Theory



**We are committed to your
superior productivity through
interaction and innovation.**



Atlas Copco

