



Geography

Water

Water Pollution

twinkl



Aim

- I understand the causes and effects of water pollution.

Success Criteria

- I can list some of the causes of water pollution.
- I can describe the effect of water pollution on drinking water.
- I can describe some of the ways water pollution affects plants and animals.
- I can list some ways to reduce water pollution.

Where Does Our Waste Go?

Watch this video to remind yourself how waste water is treated.



Is all water that flows out of water treatment works or into the sea clean?

Outflow pipes are used as emergency releases from the sewerage system.



What Is Pollution?



Pollution is anything that is introduced into a habitat which has a harmful effect on plants and animals living there.

What sorts of things might harm plants and animals living in or near water?



What Damage Can Pollution Cause?

chemicals



can cause a lack of oxygen, killing animals

litter



can be ingested by animals or trap them

fertilisers



can poison animals.

What Can We Do to Reduce Pollution?

Be careful about what you throw down your sink or toilet. Don't throw paints, oils or other forms of litter down the drain.

Use environmentally household products, such as cleaning products and toiletries.

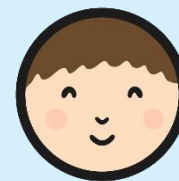
Taking great care not to overuse pesticides and fertilisers. This will prevent runoffs of the material into nearby water sources.

By having more plants in your garden you are preventing fertiliser, pesticides and contaminated water from running off into nearby water sources.

Don't throw litter into rivers, lakes or oceans.



What Can We Do to Reduce Pollution?



Marine Litter Top 10

These are the main types of litter found on UK beaches:

- Plastic pieces (less than 2.5cm in length)
- Plastic pieces (more than 2.5cm in length)
- Plastic rope, cord or string
- Plastic caps and lids
- Crisp, sweet and lolly wrappers
- Polystyrene wrappers
- Cotton bud sticks
- Fishing net / net pieces
- Plastic drinking bottles
- Glass pieces



Create a poster to show the kinds of litter most often found on beaches and the damage it can cause.

The Unflushables

The Unflushables are things that shouldn't be disposed of in a toilet!

They include:

- Nappies
- Baby wipes
- Paper towels
- Cotton wool
- Bandages
- Dental floss
- Medicines
- Dead goldfish!



Over half of all sewer blockages are caused by the wrong things being flushed.

Create a poster to show what should and should not go down a toilet.

Marine Pollution Report

Search the CBBC Newsround website for stories about pollution.

Choose one story to research in detail.

www.bbc.co.uk/newsround



Where did the incident take place?	
What chemicals were spilt?	
How did the spillage happen?	
Who was responsible?	
How many birds and animals were affected?	
How big was the spillage?	
What kinds of clean-up activities took place?	

What Can Governments Do to Reduce Pollution?

Marine Protection Areas and Marine Conservation Areas.

View a [map](#) of where these are.

Just under 25% of UK coastal waters are protected in this way.

Over 6,500 species of plants and animals are found in these areas

Legislate to ensure businesses dispose of waste responsibly.

If a person is convicted of polluting a sea or river, they could be made to pay an unlimited fine and/or be sentenced to up to five years in prison.

How do you think that Governments should deal with the problem?

Aim



- I understand the causes and effects of water pollution.

Success Criteria

- I can list some of the causes of water pollution.
- I can describe the effect of water pollution on drinking water.
- I can describe some of the ways water pollution affects plants and animals.
- I can list some ways to reduce water pollution.

