

The image shows the Nestlé logo in a dark blue color. The logo consists of the word "Nestlé" in a bold, sans-serif typeface. The letter "N" is particularly large and has a thick, blocky appearance. The "e" and "l" are also thick and rounded. The "t" is a simple vertical bar with a small crossbar. The "é" is a lowercase letter with a small accent mark above it. The background is white with blue geometric shapes on the left and right sides.

Made by Romanchuk Vladislav

Nestlé and it's history

- ▶ **Nestlé** is a Swiss transnational food and drink company headquartered in Switzerland. It has been the largest food company in the world, measured by revenues and other metrics, for 2014, 2015, and 2016.
- ▶ **Nestlé** was formed in 1905 by the merger of the **Anglo-Swiss Milk Company**, established in 1866 by brothers George and Charles Page, and **Farine Lactée Henri Nestlé**, founded in 1866 by **Henri Nestlé**.
- ▶ The company grew significantly during the First World War and again following the Second World War, expanding its offerings beyond its early condensed milk and infant formula products.

Facts and figures about Nestlé



- ▶ Nestlé has 447 factories in 86 countries around the world.
- ▶ The company has about 333 000 employees and sell it's products in 196 countries.
- ▶ Nestlé is the world's leading nutrition, health and wellness company with an unmatched portfolio of more than 2,000 global and local brands.

THE LARGEST FOOD & BEVERAGE COMPANY IN THE WORLD

Nestlé



L'ORÉAL 30%



WONKA



NOTE: Nestle has more than 2,000 brands worldwide.



Methodology

- ▶ Analysis of the official Nestlé's website
- ▶ Analysis of news articles and articles taken from trade union websites.



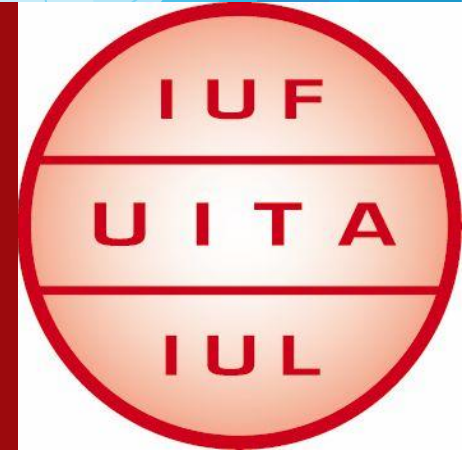
Nestlé

Good Food, Good Life



**MINTPRESS
NEWS**

**BBC
NEWS**



Statement of the problem: Nestlies

- ▶ There is a huge difference between what Nestle authorities say they do for their employees, society and our planet and what they actually do.
- ▶ In my presentation I will show you the discrepancy between the words on the official Nestlé's website and the things taking place in reality.

Nestlé's CSR according to <http://www.nestle.com>

- ▶ «Nestlé aims to improve the livelihoods of workers through its supply chain, and to protect labour rights. We have a number of salient labour rights issues, and are developing action plans to enable us to identify and address the root causes of those issues».





 Nestle

30g (1.1oz)
100 GRAND
Milk Chocolate Fudge Caramel & Candy Corns
Candy Corns
Candy Corns

Nestlé's Corporate Social Irresponsibility according to REALITY

- ▶ Instant closure of factories and mass work dismissals:
When workers arrived at the Nestlé ice cream factory in Santo Domingo on 19 June 2008 they found their factory surrounded by security guards, police officers, and ambulances. The workers were told that the factory is closed and checks were handed out to them on the spot.
- ▶ Nestlé Waters workers were denied the right to water
The Nestlé plant in Pakistan started producing "Pure Life" bottled water in 2000. But the only drinking water workers were allowed to drink was ordinary tap water. This is despite daytime temperatures reaching 47 C° in the summer!

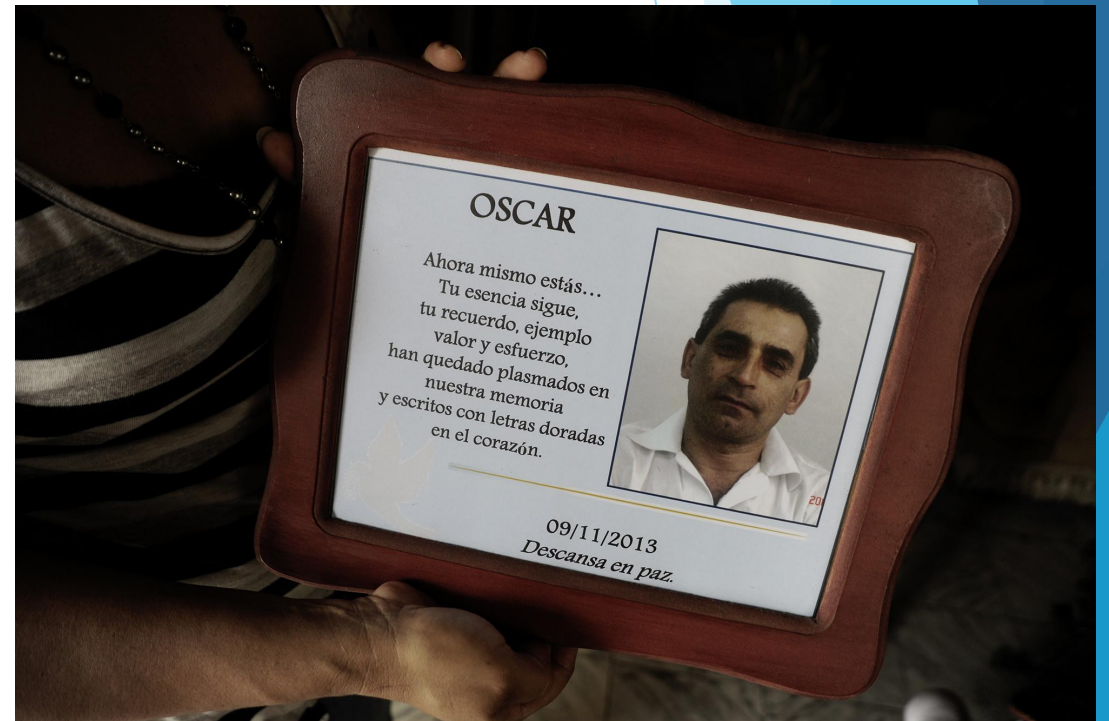
**Secret
ingredients**





What happens to protesters?

- ▶ In November 2013, Colombian trade unionist Oscar Lopez Trivino became the fifteenth Nestlé worker to be assassinated by a paramilitary organization while many of his fellow workers were in the midst of a hunger strike protesting the corporation's refusal to hear their grievances.



Nestlé's CSR according to <http://www.nestle.com>

- ▶ «Protecting children is a top priority for us, and our Child Labour Monitoring and Remediation System (CLMRS) is a major programme to address child labour and support children of farmers and workers».





Nestlé's Corporate Social Irresponsibility according to REALITY

- ▶ The Fair Labor Association - who were hired by Nestle - tracked the journey of cocoa in Ivory Coast from the poorest and most remote farms to the exporters that sold directly to Nestle. They found out that child labour and abuse are widespread there.
- ▶ In 2014 an appellate court approved a lawsuit filed against Nestlé, accusing the company of tacitly supporting child slavery by refusing to enact tighter controls on what farms they buy from.



Nestlé's CSR according to <http://www.nestle.com>

- ▶ “As the world's largest food and beverages company, Nestlé can shape sustainable consumption and steward resources for future generations. We focus our efforts on reducing water use across our operations, using sustainably managed and renewable resources and working towards our goal of zero waste.”



Nestlé's Corporate Social Irresponsibility according to REALITY

- ▶ Nestlé is draining California aquifers, from Sacramento alone taking 80 million gallons annually. Nestlé then sells the people's water back to them at great profit under many dozen brand names.
- ▶ This dramatically affects local environment. For example, the Delta smelt reached a new record low population level in 2014, according to the California Department of Fish and Wildlife.



Nestlé's CSR according to <http://www.nestle.com>

- ▶ “The United Nations believes the food industry has a vital role to play in helping enable healthier lives. At Nestlé we believe this too. We want to help shape a better and healthier world”.



Nestlé's Corporate Social Irresponsibility according to REALITY

- ▶ That Nestle is promoting unhealthy food should come as no surprise, but the level at which they operate it is simply staggering. A recent report by the UK Consumers Association claims that 7 out of the 15 breakfast cereals with the highest levels of sugar, fat, and salt were Nestle products.
- ▶ In November 2002, police ordered Nestle Colombia to decommission 200 tons of imported powdered milk, because they were falsely relabeled, not only as a different, local brand, but also with a different production date.



Conclusion

- ▶ All major companies have incidents, accidents and scandals. When you have so many people working for you, it's virtually impossible to maintain a clean sheet. Someone will eventually screw up, someone will eventually do something they should.
- ▶ However, Nestle has shown, time and time again, that they have few ethics and little interest in a real social responsibility. From lying about production dates to using water without a permit - they have often gone the extra mile to make an extra profit - even when the extra mile meant hurting people, directly or indirectly.



References

- ▶ <http://www.bbc.com/news/av/world-18645010/nestle-failing-on-child-labour-abuse-says-fla-report>
- ▶ <http://www.mintpressnews.com/nestle-continues-stealing-worlds-water-during-drought/203544/>
- ▶ <http://www.nestle.com>
- ▶ <http://www.iuf.org/nepressure/en/more.html>
- ▶ Rowan C. The world's top 100 food & beverage companies - 2015: Change is the new normal // Food Engineering. 2015. URL: <http://www.foodengineeringmag.com/articles/94498-the-worlds-top-100-food-beverage-companies---2015-change-is-the-new-normal>
- ▶ <http://www.zmescience.com/science/nestle-company-pollution-children/>