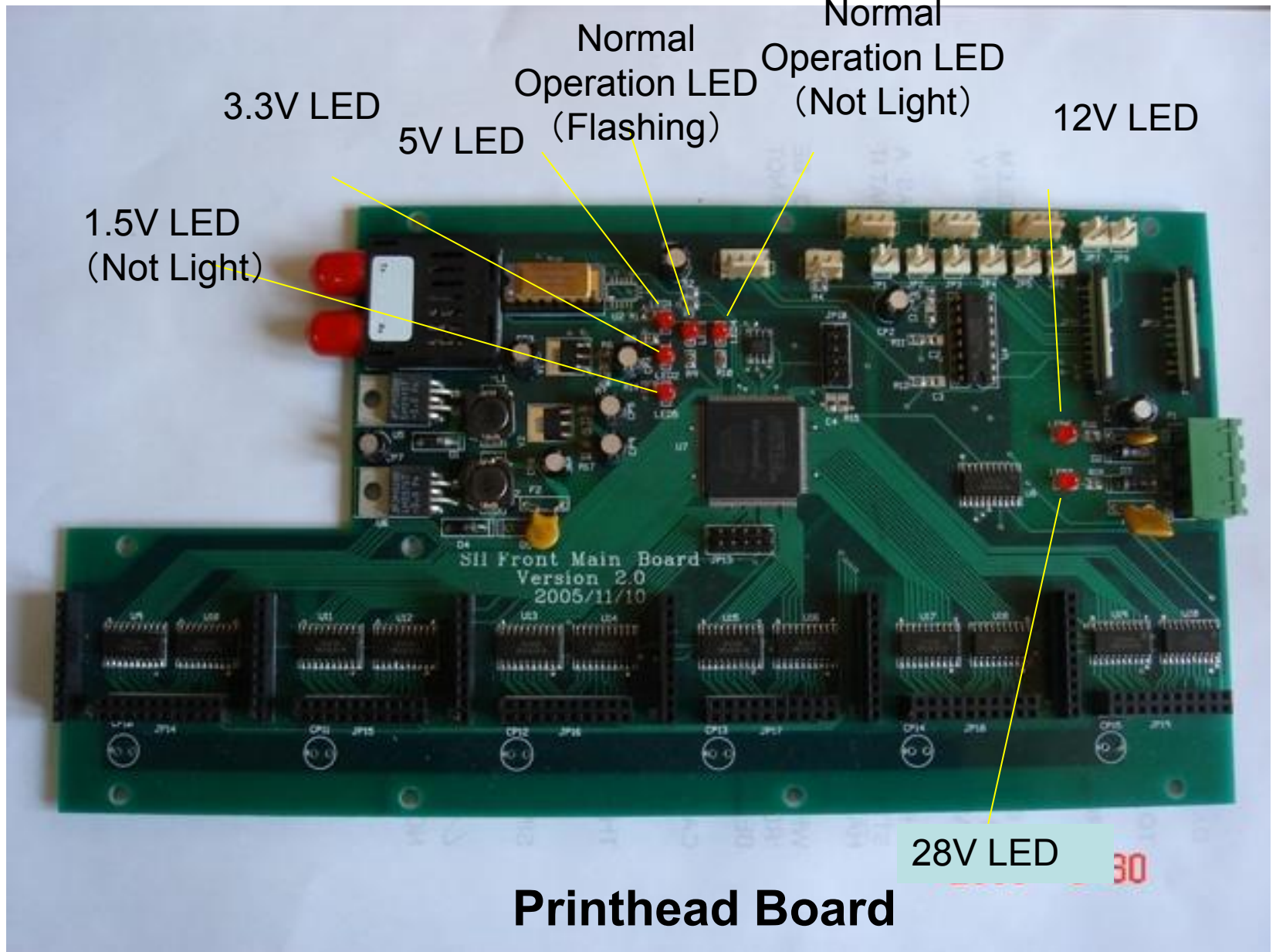


3.3V LED
5V LED
Normal Operation LED (Flashing)
Normal Operation LED (Not Light)
12V LED

1.5V LED
(Not Light)

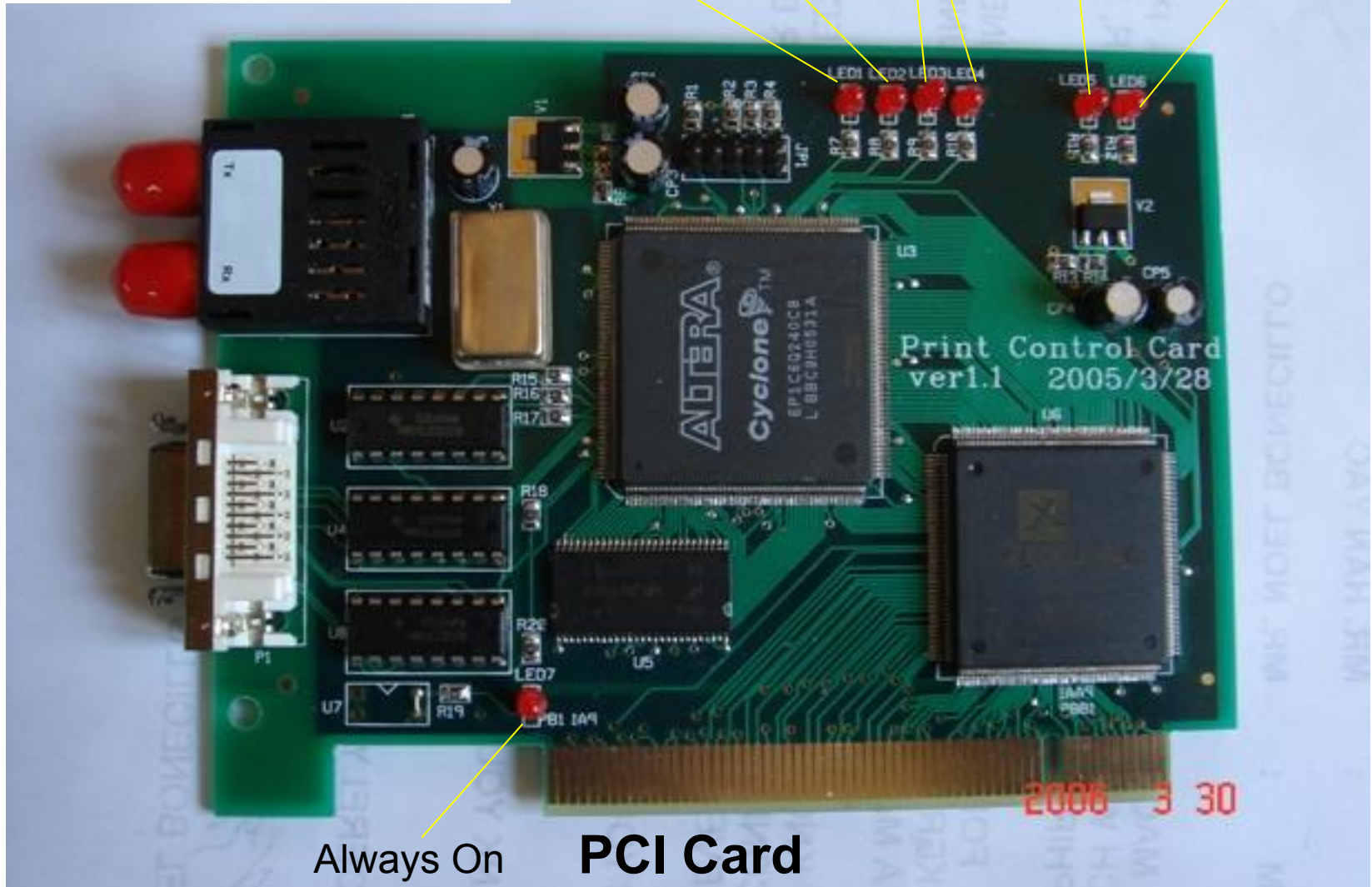
28V LED

Printhead Board

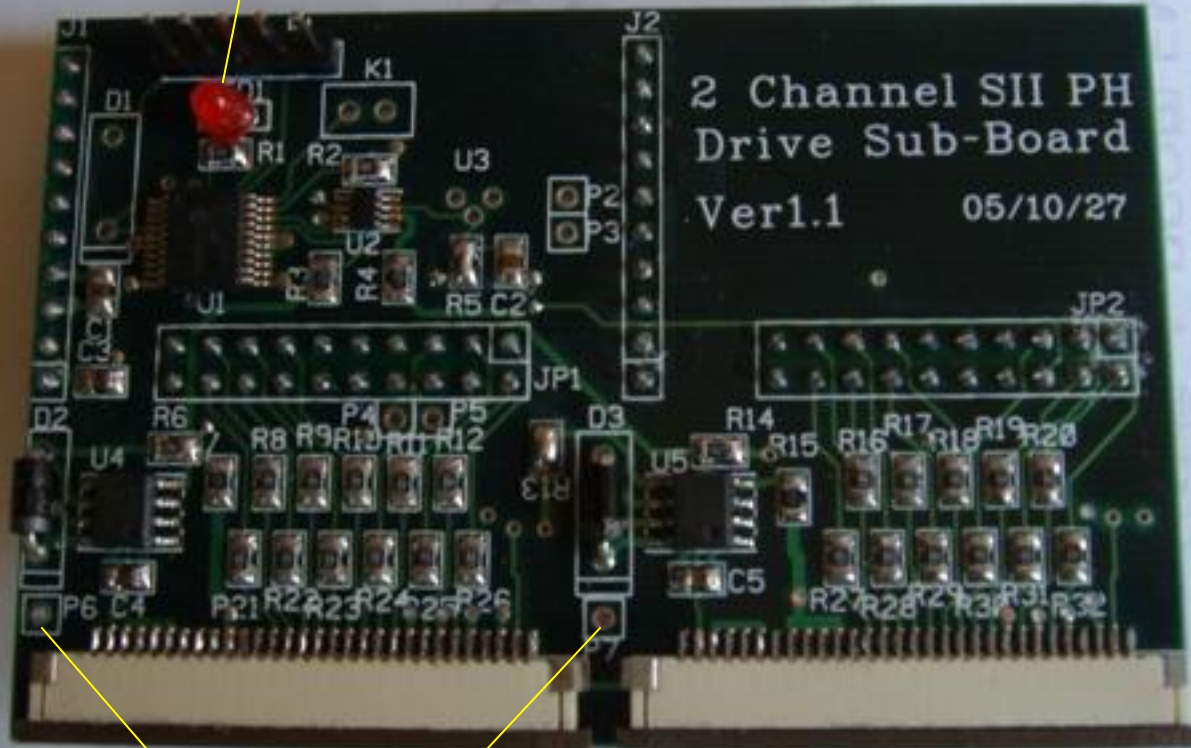


P.S.: When X and Y motor is working, corresponding LED will be on

X Motor Working LED	Y Motor Working LED	Operation LED (Always On)	3.3V LED	5V LED
LED1	LED2	LED3	LED4	LED5, LED6



Operation LED



Printhead Card

Printhead Voltage Checking Point

12V LED

24V LED

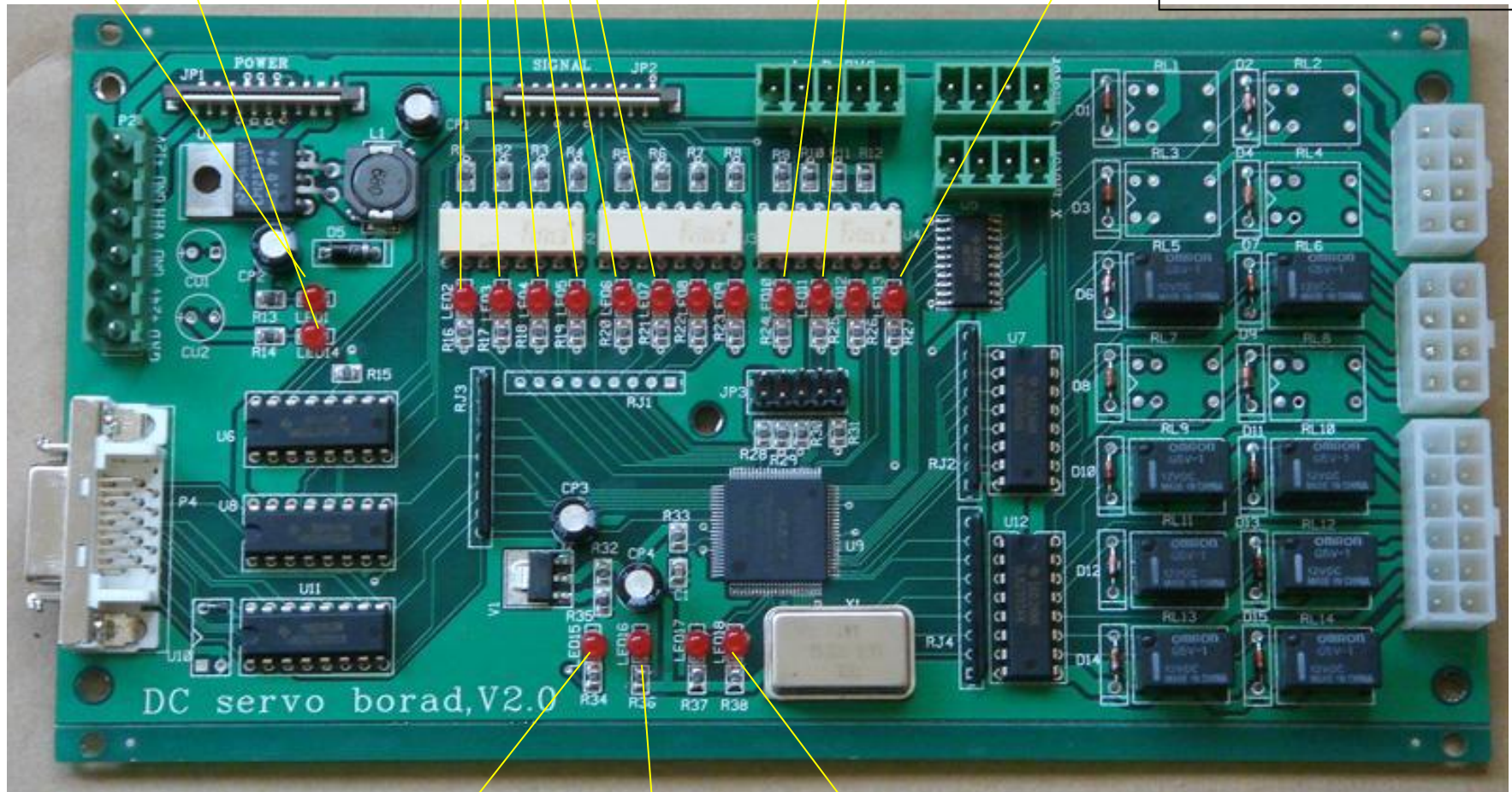
6 Color Ink
Supply LED
(On when pumping)

Servo Board

Left and Right
Limit Switch
Indication LED

Emergency
Stop LED

P.S.: Left and Right
Limit Switch and
Emergency Stop LED
Will On When They
Are Pressed



5V LED

3.3V LED

Operation LED
(Flashing)