

KARAGANDA STATE MEDICAL UNIVERSITY.

Report: Equipment and instruments of dental clinic.

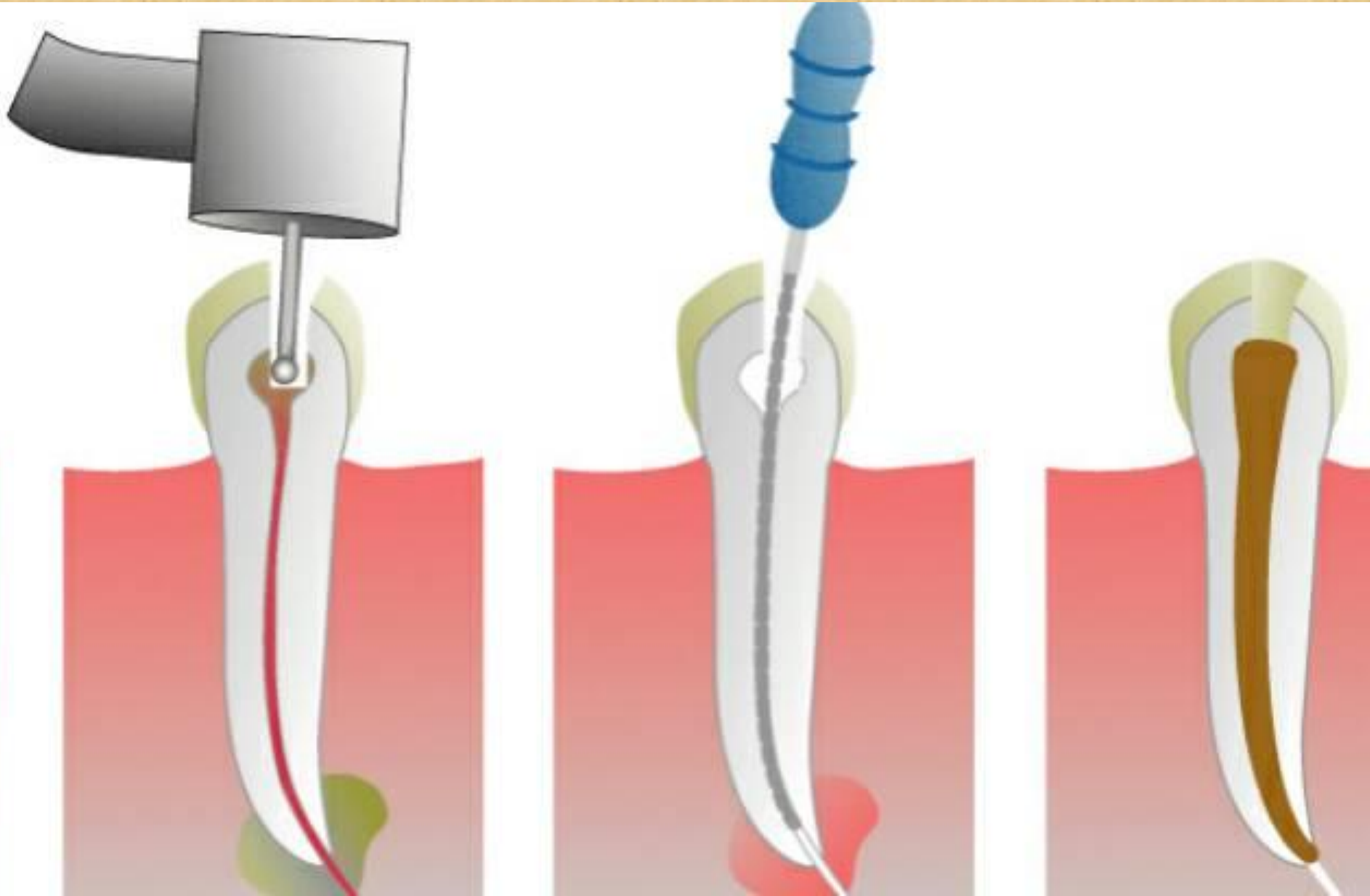
Made by: Belostockiy A.I.

Karagandy, 2016.

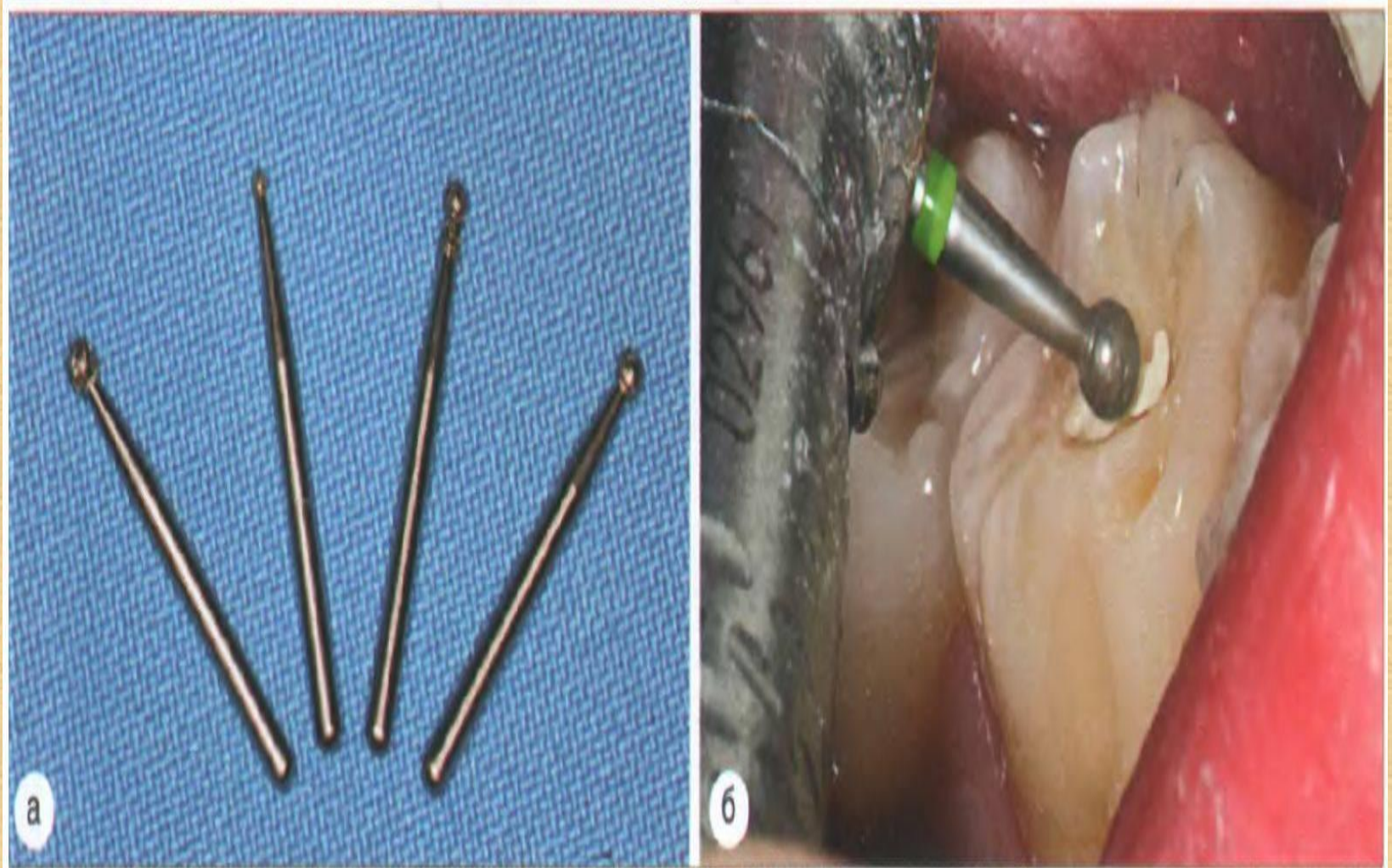
Endodontics includes a treatment of root canals inside the tooth. Inside these canals, there is dental pulp, which is removed if there is inflammation in the tooth, thus creating a space inside the tooth. This space has to be treated, extended, cleaned and then filled so that the tooth can regain its functions.



Machine root canal treatment guarantees better cleaning, extension and simplification of the complex root system and creates ideal conditions for filling the root canals.



This device is used in endodontic treatment. It is used to measure the length of the root canal space precisely and to determine the position of apical foramen, a narrow opening at the apex of the dental root, through which the nerve and blood vessels supplying the dental pulp (cavity inside the tooth) pass from the adjacent bone.



For a long-term success of the endodontic treatment, it is vital to treat and fill the root canal right up to this opening. Apex locator compares the tissue resistance between two electrodes. A small metal hook is placed into the corner of the lip of the patient and acts as one electrode. The second electrode is connected to the instrument, which is used for treating the dental root. This measurement is completely painless.



This device is used to treat soft tissues (gums, fimbriated fold of the tongue). The device works with a high frequency electric current and can be used for coagulation (cessation of bleeding) or for incision.



2

An advantage of the incision by an electric current is a significantly lower post-operative painfulness and quicker healing than if the usual surgical tools (scalpels) are used. During the incision and most importantly immediately after the incision, the tissue does not bleed, which makes it possible to perform surgical interventions during one visit that would require breaking up into two visits with several days for healing of the treated soft tissue if the traditional tools were used.



Dental mirrors are used by the dentist or dental auxiliary to view a mirror image of the teeth in locations of the mouth where visibility is difficult or impossible. They also are useful for reflecting light onto desired surfaces, indirect vision, and with retraction of soft tissues to improve access or vision.





Dental handpieces come in many varying types which include: High speed air driven (also known as an airtor), slow speed, friction grip, surgical hand piece. Straight handpiece with a sharp bur.

Dental Burs cutting surface are either made of a multifluted tungsten carbide, a diamond coated tip or a stainless steel multi fluted rosehead. There are many different types and classifications of burs some of the most common are: the round bur (sizes ¼ to 10) or inverted cone (sizes 33½ to 90L). Burs are also classified by the type of shank. For instance a latch type, or right angle bur is only used in the slow speed handpiece with contra-angle attachment. Long shank or shaft is only used in the slow speed when the contra-angle is not in use, and finally a friction grip bur which is a small bur used only in the high-speed handpiece. There are many bur shapes that are utilized in various specific procedures.



- 1. Inside these canals, there is dental __PULP__, which is removed if there is inflammation in the tooth, thus creating a space inside the tooth.
- 2. Machine root canal treatment guarantees better __CLEANING____, extension and simplification of the complex root system and creates ideal conditions for filling the root canals.
- 3. Dental Burs cutting surface are either made of a multifluted tungsten carbide, a diamond coated __TIP____ or a stainless steel multi fluted rosehead.
- 4. Apex locator compares the tissue resistance between two __ELECTRODES____.
- 5. The device works with a high frequency electric current and can be used for coagulation (__CESSATION____ of bleeding) or for incision.



**THE
END**