

Beware! The USA's Dangerous Wild Animals



Beware! The USA's Dangerous Wild Animals



Spotlight 9
Module 7
Culture Corner



The steps of the lesson

1/ Opening teacher's speech

2/ Captain of each team introduce their teams

3/ Work with teacher's presentation

4/ Each team defends its presentation

5/ Conclusion (closing teacher's speech)

There are many dangerous animals in the world but the most dangerous ones who can kill humans each year are **snakes** and **scorpions**. They behave aggressive and have lethal poisons.



animals:

1. *Snakes* - death toll:
50,000+ per year

2. *Scorpions*- death toll:
5,000+ per year

3. *Crocodiles* - death toll:
2,000+ per year

4. *Elephants* - death toll:
500+ per year

5. *Hippos* - death toll:
300+ per year

6. *Lions* - death toll:
200+ per year

7. *Jellyfish* - death toll:
100+ per year

8. *Sharks* - death toll:
10-20 per year

9. *Tigers* - death toll:
5-15 per year

10. *Bears* - death toll:
5-10 per year





The USA's Dangerous animals

alligator

grizzly bear

raccoon

rattlesnakes

Why are they dangerous?

motionless

unpredictable

poisonous

painful

fatal

beware

diseases

paw

prey

rabies

venom

swamp

to bite

to drag

to snatch

to scratch

to warn

to sting

Test



Dangerous Wild Animals around the world

1. Match the words to make up phrases. Put the letters in the correct order.

1. grizzly

a) animals

2. different

b) flaps

3. scratch

c) snake

4. huge

d) species

5. cat

e) well

6. poisonous

f) bear



2. Choose the right variant

1. This animal often steals food from people.

a the rattlesnake **b** the grizzly bear **c** the raccoon

2. This animal isn't seen very often.

a the camel **b** the grizzly bear **c** the alligator

3. This animal can kill soon after birth.

a the dog **b** the rattlesnake **c** the bull

4. This animal is more dangerous at certain times.

a the grizzly bear **b** the bull **c** the raccoon

5. This animal usually eats its food in one piece.

a the dog **b** the alligator **c** the rattlesnake



3. Guess the words and unscramble them.

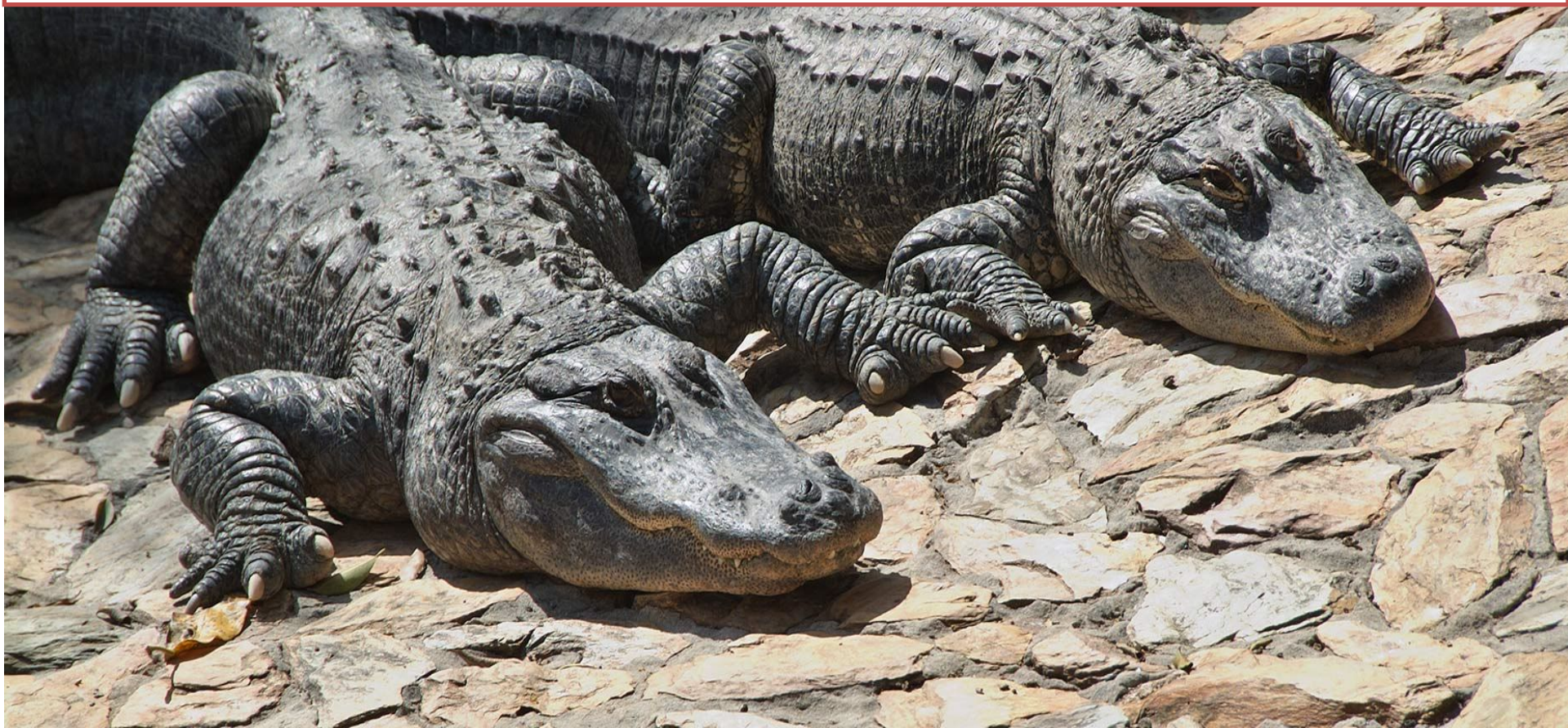
Grizzly bears come from cold places like (1) *lasaAk* and can kill a man with one blow from their huge (2) *wspa*.

Rattlesnakes live in (3) *cArminae* West. A rattlesnake bite can be very (4) *lapniuf* and even (5) *ledayd*.



4. Guess the prepositions and fill in the gaps.

Over a million alligators live ... (1) slow-moving, lakes, marshes and swamps ... (2) the southern states ... (3) Florida, Louisiana, Texas and Georgia. They are usually 3 ... (4) 5 metres long. They often hide motionless, usually waiting to snatch their prey and drag it ... (5) the water.



5. Guess the words and write them correctly.

Raccoons might look cute and (1) **c----y**, but they can actually carry many (2) **d-----s**, including rabies, a deadly (3) **v---s**. They are often found in (4) **a----s** or garages, or searching for food in (5) **r-----h** bins, which they can open with their paws.



6. Complete the sentences using the best verb

The alligator (1) In places like rivers, marshes and swamps. You (2) ... find them in the southern states of Florida, Louisiana, Texas and Georgia. They (3) ... almost anything and (4) ... it whole. They (5)... very dangerous because they (6) ... in the water without moving.

1/ a lives

b lived

c will live

2/ a could

b can't

c can

3/ a ate

b are eating

c eat

4/ a swallows

b swallowed

c swallow

5/ a were

b are

c will be

6/ a hides

b hide

c will hide



7. Make up sentences from the following words

1. the cold/is/The/ able/wolf/ to stand/grey/.

2. Russian/about/253/There/proverbs/are/wolves.

**3. provoked/humans/don't/attack/normally/Wolves/
unless/.**

**4. Russia/Two/of/northern/central/species/grey/are/in/wolves/
found/and/.**



8. Choose the right description of the words

1 motionless

2 warn

3 poisonous

4 drag

5 fatal

6 snatch

a make someone aware of danger

b not moving

c causing death

d to take something quickly or violently

e to pull something somewhere

f contains a poison or toxic material



9. Find and correct mistakes in the sentence.

Grizzly bears must be _____ (1)
unpredictable but ferocious especially _____ (2)
when they is hungry, _____ (3)
injured or to their cubs. _____ (4)

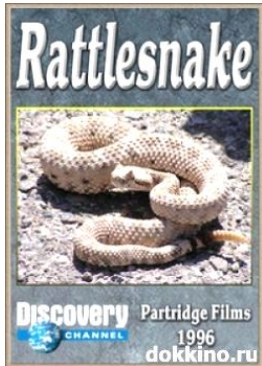




- 1/ Where does the rattlesnake live?
- 2/ How can the rattlesnake be dangerous?
- 3/ Where does the grizzly bear live?
- 4/ How can the grizzly bear be dangerous?
- 5/ Where does the alligator live?
- 6/ How can the alligator be dangerous?



assets.mgdl1.com>novostey.com



Answers

- a** streams, lakes, rivers in Alaska, Idaho, Montana
- b** painful bite with poisonous venom, can be fatal
- c** southwestern states, such as California, Arizona
- d** unpredictable and ferocious (esp. when hungry, injured or with cubs)
- e** hide motionless in water and drag prey under
- f** rivers, lakes, marshes, swamps in Florida, Louisiana, Texas and Georgia



**Thank
you for
your
attention!**

