

Impressionism.

---

Claude Monet.

# History

- The use of the name **Impressionism** to characterise the new style came from the first exhibition of members of the group at the recently vacated former studio of photographer Nadar in 1874, where they had often encountered the leaders of Parisian intellectual and cultural life.



# Childhood

---

- Monet was born in Paris in 1840. Family soon moved to Le Havre on the coast of Normandy, where his father became a ship chandler, and the boy could constantly observe ships and the sea.



# First steps

- He started as a caricaturist.
- In 1867 Monet submitted to the Salon a revolutionary work 'Women in the Garden'.
- In this and other pictures Monet established the new Impressionist subject – the moment of experience in light.



*(Women in the Garden.)*

# Travelling

- During the disorder of 1870-71 Monet fled, first to London, where he studied the art of Constable and Turner, then to Holland and Belgium.
- On his return to France Monet's style changed radically: he dissolved the object. In Impression he demonstrated that colour belongs not to the object but to the moment of the visual experience.



*(Sunrise.)*

# Places to draw

- In 1873 Monet set up a floating studio in a boat on the Seine.
- At the financially disastrous third Impressionist exhibition of 1877 Monet showed eight canvases devoted to the railway.



*(Le Havre.)*

# Locomotive

- In the Gare Saint – Lazare in Paris, of 1877, Monet depicted a locomotive drawing cars into a station.
- The Impressionists eliminated black from their palette and the shadows and the massive black locomotive were painted in blue.
- The locomotive's bumper is red.

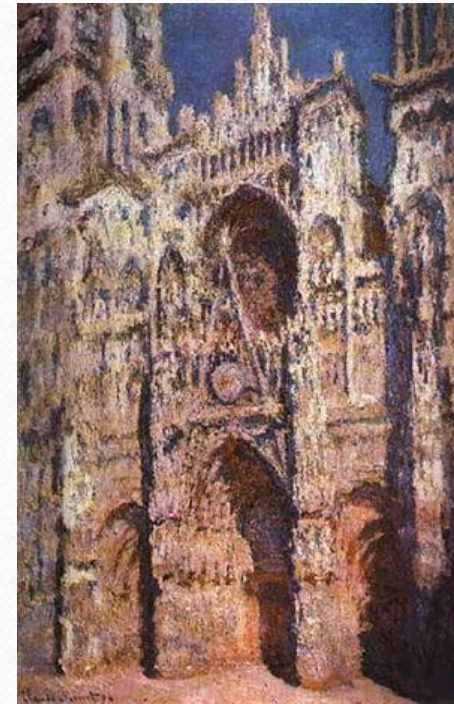


*(Locomotive.)*

# Rouen Cathedral in Full Sunlight

---

- The painting known as Rouen Cathedral in Full Sunlight represents the moment just about noon when the low winter sun is still striking the southern flanks of the masses masonry, and has not yet entered the west portals, illuminated by reflections from the square in front.



*(Rouen Cathedral in Full Sunlight.)*



# A battle with nature

- In 1899 Monet began a series of water landscapes that occupied him till his death twenty seven-years later.
- Here in the gigantic canvases he submerged himself in the world of changing colour, a poetic fabric in which visual and emotional experience merge.



*(Storm At Belle-Ile.)*