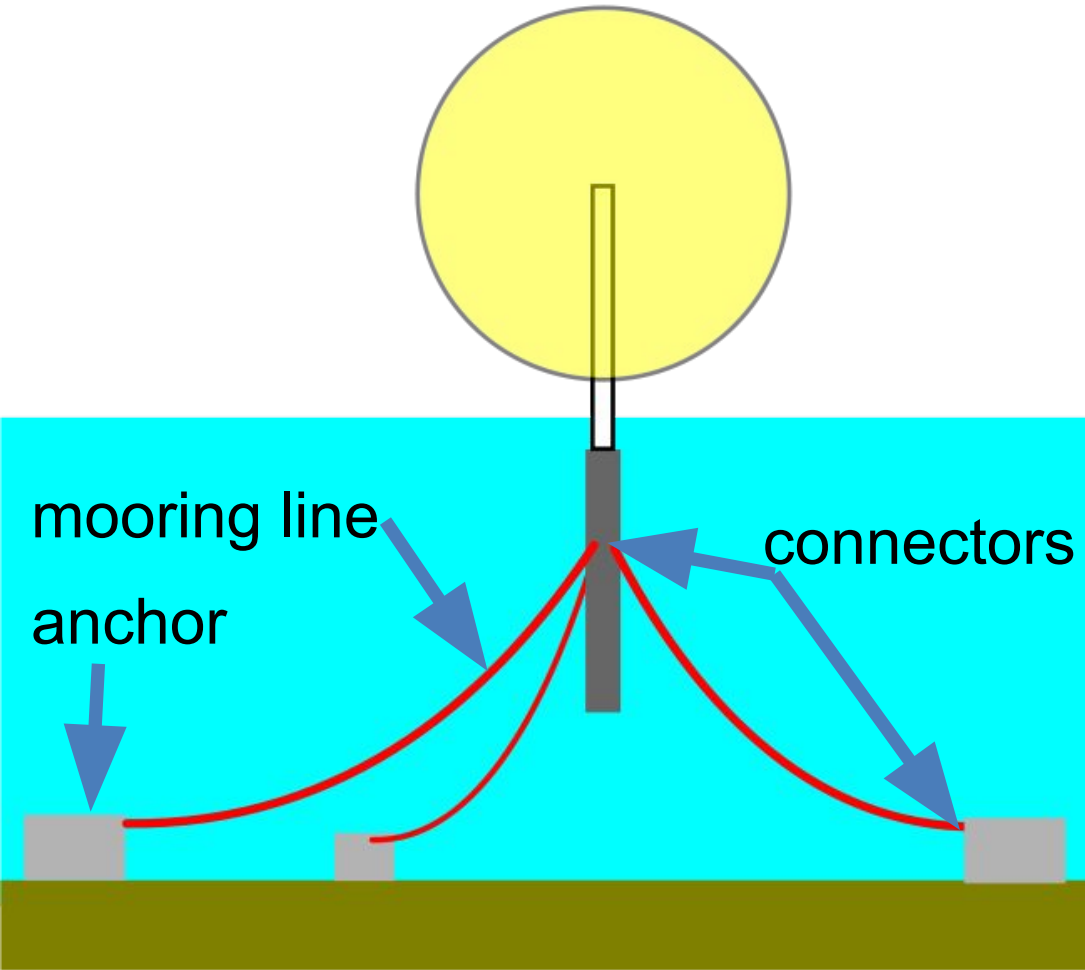


Different types comparison of anchors for floating structures

Gridyaev D.,
Master of M3219e

Vladivostok 2018

Definition-mooring system



A mooring system used for station keeping of a ship or floating platform in all water depths.

Types of mooring line

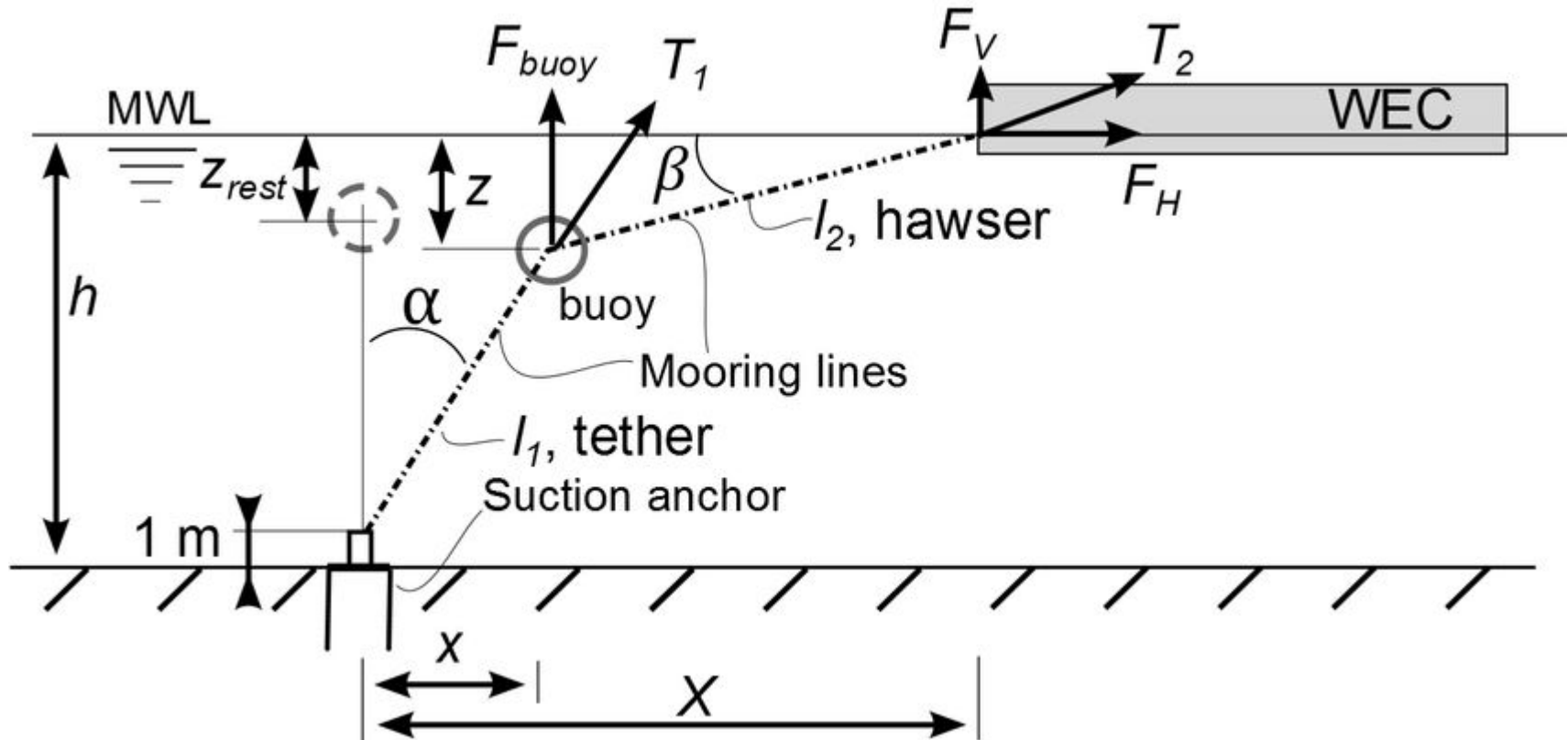


Synthetic
fiber rope
D > 2000 m

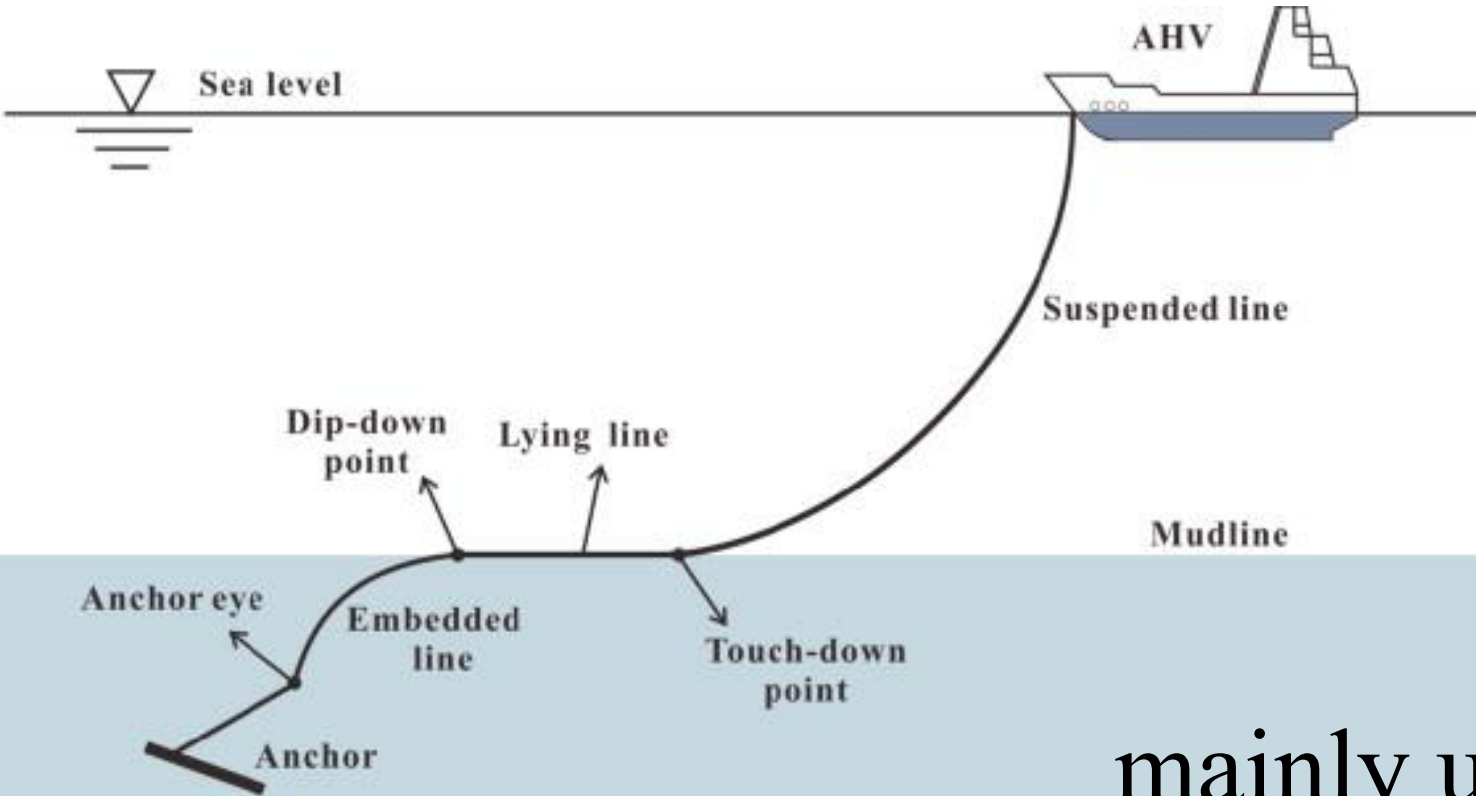


Chain or
steel wire rope
D > 100 m

Anchor loads

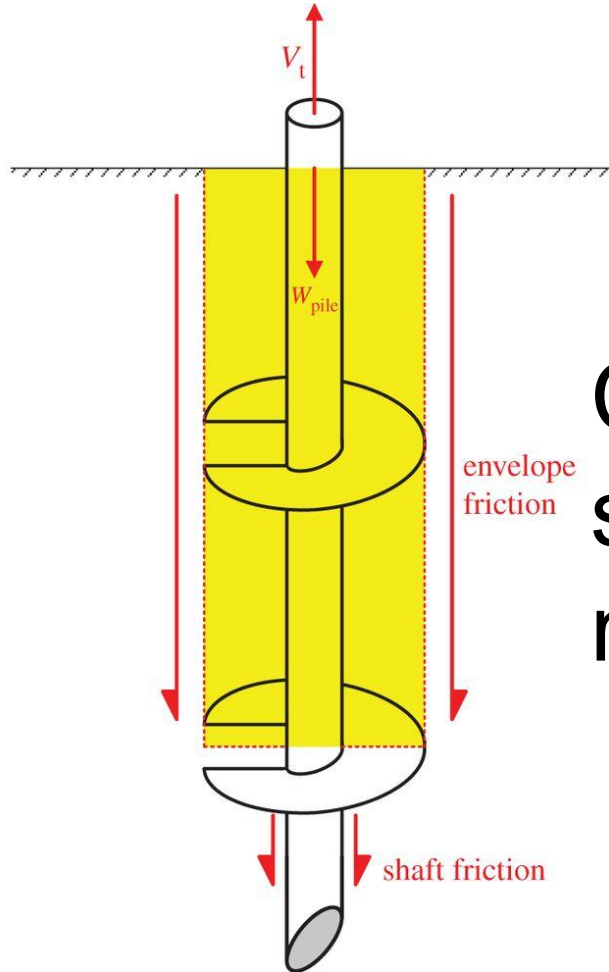
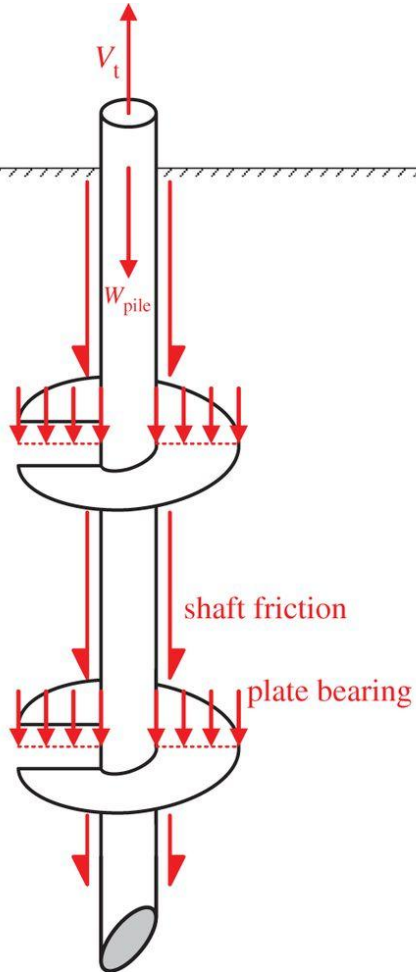


Drag embedment anchor



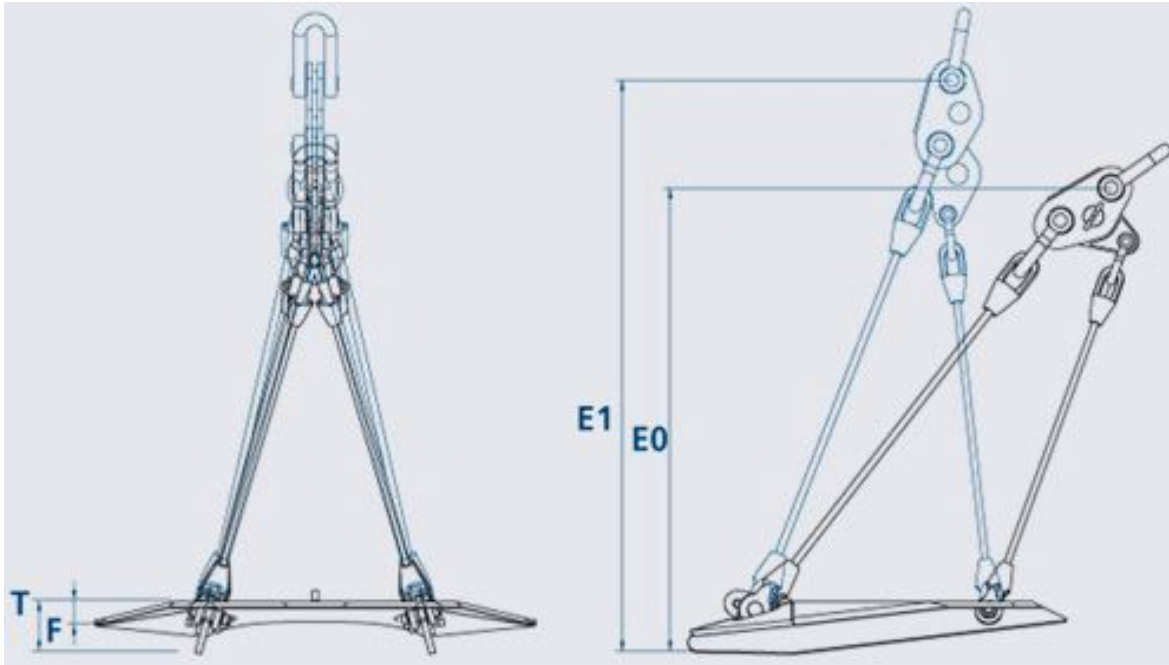
mainly used for
catenary moorings

Suction piles



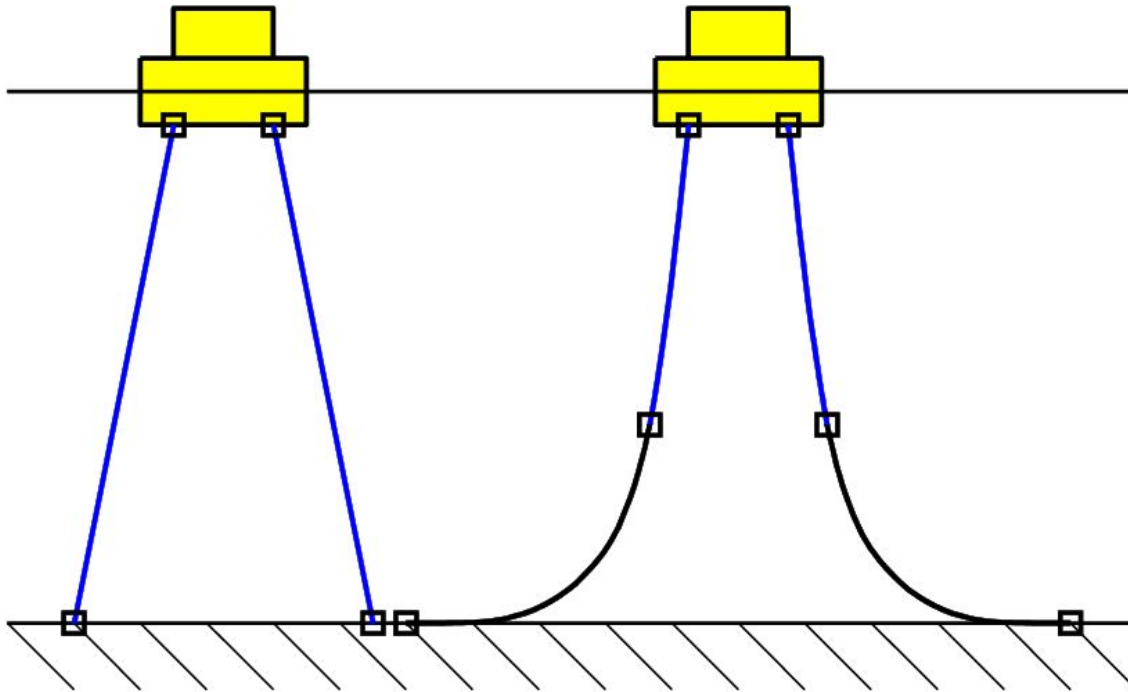
Can be used in
sand, clay and
mud soils.

Vertical load anchors



It is used primarily in taut leg mooring systems

Catenary mooring system



The most used system in shallow water, as water depth increases, this system become non-economical.

Thank you for your attention

