

A large, multi-tiered waterfall cascading down a rocky cliff face, surrounded by dense green forest. The water is white and frothy as it falls, creating a misty atmosphere at the base. The background is a lush, green forest with various shades of green foliage.

WATERFALL

CLUB for charity

Your own full filled way

WE CAN
make charity &
we are social team with new generation

About us

WATERFALL

IT IS NOT JUST A NAME OF THE PROJECT,
WATER IT IS FLOW

WATERFALL – FALLING DOWN AVALANCHE.

THE SAME WAY IS CREATING THE GLOBAL MATRIX.
AVALANCHE OF ACCOUNTS ARE ALSO FALLS
DOWN,
PROVIDING INCOME TO MANY PARTNERS.

WATERFALL CLUB MARKETING

**NEW GENERATION PROJECT
BUSINESS OPPORTUNITY
OF THIS MARKETING
YOU HAVEN'T SEEN BEFORE**

Skypename: infoveiko

ADVANTAGES OF WATERFALL CLUB

- accessible enter
- income to all without exclusions and without qualifications
- income in every independent program
- short three place matrices with only one free place
- ability to close matrix without invitation
- multiple huge referral payments in each program
- redistribution and help of technical account
- each program goes in a circle
- constantly growing accounts (monthly clones) gives profit
- multiple income in every program
- mutual fund
- profit from investment



WATERFALL

**IT IS NOT JUST A NAME OF THE PROJECT,
WATER IT IS FLOW**

**WATERFALL – FALLING DOWN AVALANCHE. THE SAME
WAY IS CREATING THE GLOBAL MATRIX. AVALANCHE
OF ACCOUNTS ARE ALSO FALLS DOWN, PROVIDING
INCOME TO MANY PARTNERS.**

PROFIT FROM:

- 1. Closing matrix**
- 2. Accruals inside the structure up to the 5 stages**
- 3. Income in clocks program, where matrices of all partners are closing from left to the right**
- 4. Referral income, the profit is guaranteed to everyone**



Monthly activation

MONTHLY ACTIVATION \$5

**Activation will be divided on 5 stages with \$1
Each partner activates funds by buying a clone in
„Penny“ program.**

**Example: he has \$1 on the balance.
Activating \$1 he is buying a clone for
himself in the matrix.**

Clone will go strictly under him.

**There is no payment for this clone after closing matrix.
But from money inside the structure there will be opened
additional place in Clocks-1 program for 9\$.
All clones will be transferred to the Clocks program and go
into your matrix.**

**So each partner will have rapidly increasing the number
of places monthly, which gives profit.**

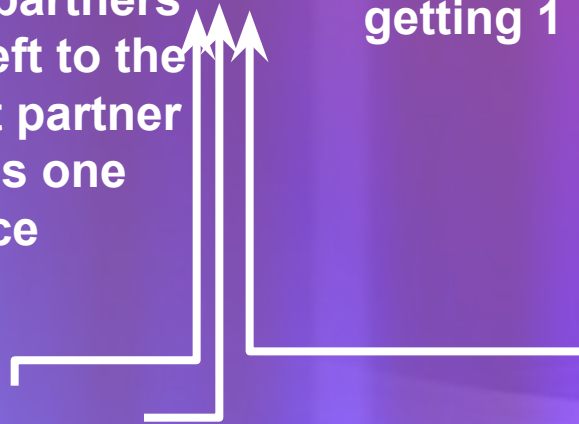
Monthly activation

**SPONSOR GETS REFERRAL REWARD FROM EVERY
STRUCTURAL ACCRUAL.
EVERY PROGRAM HAS DIFFERENT ACCRUALS,
GROWING WITH INCOME OF YOUR REFERRALS**

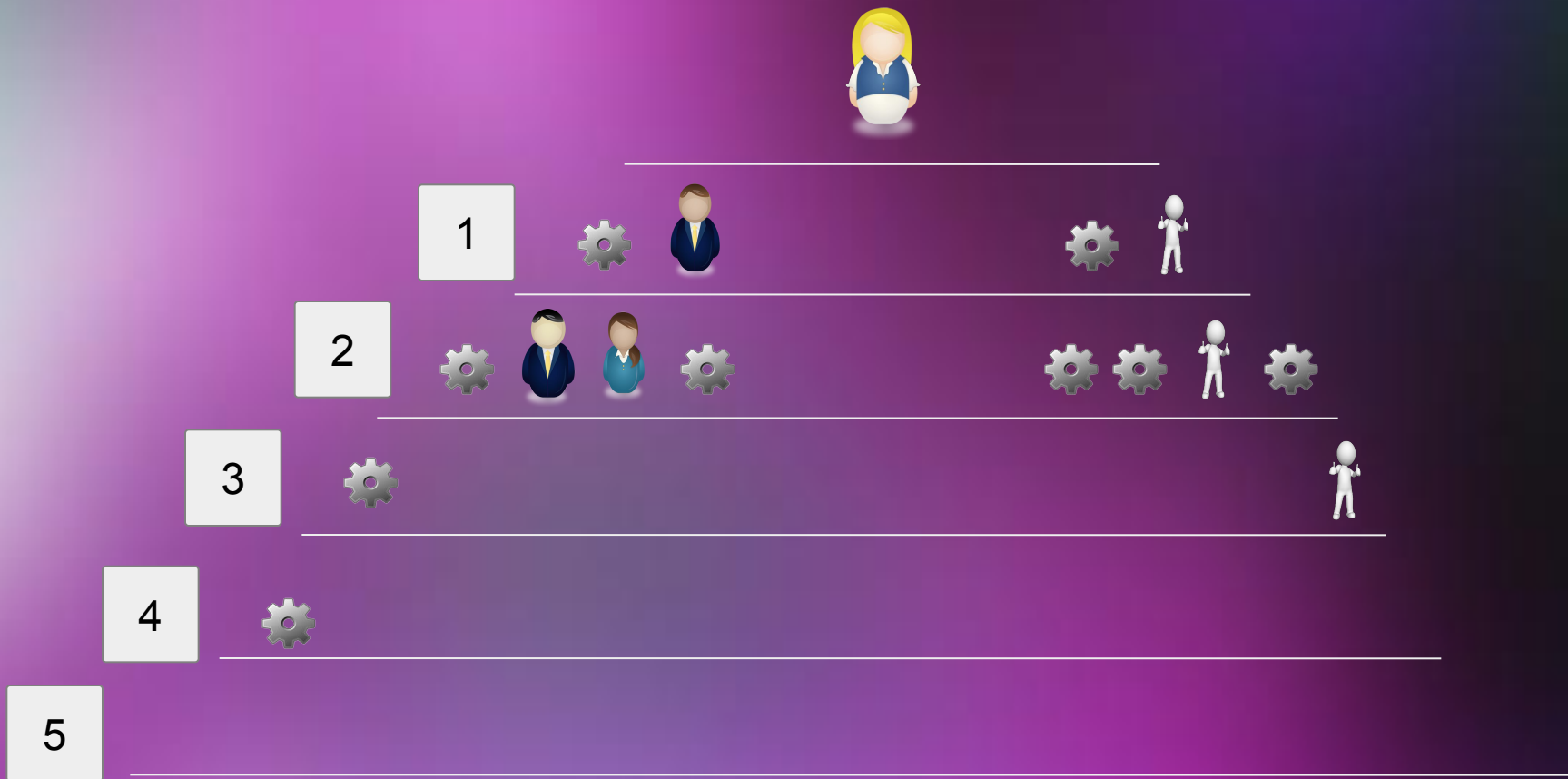
**In the matrix system is
configured that all partners
goes strictly from left to the
right under the first partner
which already has one
reserved place**




**Each partner in the matrix
getting 1 reserved place**



Matrix is closed income accrued



Accruals goes from each level
up to the level 5
each program has different profit

In this picture we can see that the matrix has only two partners. 
Five matrices are closed with many reinvests and technical accounts.
Level 4 is closing already.

\$5 „PENNY“

Income part of „PENNY PROGRAM“, 1st account price for two \$5

PROFIT 21.6\$ divided in this way:

\$1 - available to withdraw;

\$0.6 - to tech account;

\$20 - transition to 2-Start program

1	2 acc	10%	\$0.2
2	4 acc	10%	\$0.4
3	8 acc	10%	\$0.8
4	16 acc	20%	\$3.2
5	32 acc	50%	\$16
	Total 64 acc	100%	Total \$21.6

\$5 „PENNY“

Income part of „PENNY PROGRAM“ 2nd account price for two \$5

PROFIT \$21.6 divided in this way:

\$1 - available to withdraw

\$0.6 - to tech account

\$9 - transition to CLOCKS-1 program

5\$ - buying clones in this program will add 5 accounts.

All clones after income accruing will go to „CLOCKS-1“
and will give profit constantly ! \$9 withdraw.

1	2 acc	10%	\$0.2
2	4 acc	10%	\$0.4
3	8 acc	10%	\$0.8
4	16 acc	20%	\$3.2
5	32 acc	50%	\$16
	Total 64 acc	100%	Total \$21.6

\$20 „START“

Program 1st account price for two \$20

PROFIT \$82.4 divided in this way:

\$50 - BUSINESS + WITHDRAW 4 \$ after closing the matrix

4.4\$ - to tech account

9\$ - to CLOCKS-1 program

5 \$ - to mutual fund

4 \$ - on income distribution inside the structure

1	2 acc	10%	\$0.8
2	4 acc	10%	\$1.6
3	8 acc	10%	\$3.2
4	16 acc	20%	\$12.8
5	32 acc	50%	\$64
	Total 64 acc	100%	Total \$82.4

START 2nd account

PROFIT \$82.4 divided in this way:

\$14 - available to withdraw + additionally 4 \$ from closed matrix. Profit \$18 .

4,4\$ - to techaccount;

50\$ - to Clocks-2 program

\$5 - to Mutual fund

\$4 - on income distribution inside the structure

\$5 - referral payment

1	2 acc	10%	\$0.8
2	4 acc	10%	\$1.6
3	8 acc	10%	\$3.2
4	16 acc	20%	\$12.8
5	32 acc	50%	\$64
	Total 64 acc	100%	Total \$82.4

\$50 BUSINESS 1st account

PROFIT divided in this way:

\$60- available to withdraw; additionally 10\$ from closing matrix. Profit \$70

\$10 - to techaccount

\$100 - to VIP program

\$10 - on income distribution inside the structure

\$10 - referral payment

\$9 - «Clocks-1» program with your account

1	2 acc	10%	\$2
2	4 acc	10%	\$4
3	8 acc	10%	\$8
4	16 acc	20%	\$32
5	32 acc	50%	\$160
	Total 64 acc	100%	Total \$206

BUSINESS \$50 2nd account

\$100 - available to withdraw; additionally \$10 from closing matrix.
Amount \$110.

- \$10 - to tech account
- \$50 - to CLOCKS-2 program
- \$17 - to mutual fund
- \$10 - on income distribution inside the structure
- \$10 - referral payment
- \$9 - to CLOCKS-1 program **YOUR ACCOUNT.**

1	2 acc	10%	\$2
2	4 acc	10%	\$4
3	8 acc	10%	\$8
4	16 acc	20%	\$32
5	32 acc	50%	\$160
	Total 64 acc	100%	Total \$206

All next accruals from matrices will give \$100 profit.

\$100

VIP PROGRAM price for two \$100

**Accrued PROFIT \$412 divided
in this way:**

**\$297 - available to withdraw; additionally \$20 from closing matrix.
Amount \$317.**

\$10 - to techaccount

\$50 - to „CLOCKS-2“ program

\$16 - to mutual fund

\$20 - on income distribution inside the structure

\$10 - referral payments

\$9 - to „CLOCKS-1“ program

1	2 acc	10%	\$4
2	4 acc	10%	\$8
3	8 acc	10%	\$16
4	16 acc	20%	\$64
5	32 acc	50%	\$320
	Total 64 acc	100%	Total \$412



WATERFALL



CLOCKS PROGRAM

FUNDAMENTAL IS 3 PLACE MATRIX. FILLING THE MATRICES IS A PRIORITY. YOUR PERSONAL REFERRALS, THE PARTNERS WHO ALREADY HAS REFERRALS FIRST WILL BE CLOSED BY TECHNICAL AND STRUCTURAL ACCOUNTS. GETTING PROFIT AFTER CLOSING MATRIX. ALL YOUR ACCOUNTS AND REINVEST WILL GO INTO THIS PROGRAM FROM PREVIOUS PROGRAMS.

INITIALLY, THE CLOSURE OF CYCLES WILL BE A LITTLE SLOWER. BUT IN THE FUTURE WITH THE INCREASE OF THE NUMBER OF YOUR MATRICES, TRANSITION OF PARTNERS AND TECHNICAL ACCOUNTS FROM PREVIOUS PROGRAMMES, THE CLOSING PROCESS WILL BE VERY NOTICEABLE AND PROFITABLE.

IF YOUR PARTNERS HAVE NOT MOVED IN THE “CLOCKS” PROGRAM THE MATRIX DURING THIS TIME, MAY CLOSE ANY REINVESTMENT OF TECHNICAL ACCOUNT.

PARTNERS WHO DON'T HAVE PERSONAL REFERRALS WILL ALSO GO INTO THIS PROGRAM. CLOSING MATRICES WILL BE DURING THE TRANSFERING INTO THIS MATRIX. THIS MEANS IF PARTNER WAS TRANSFERRED INTO THIS MATRIX AND WAITS OF CLOSING CYCLE WITHOUT PARTNERS LONG TIME, THE MATRIX WILL BE CLOSED BY STRUCTURAL ACCOUNT. AND HE WILL ALSO RECEIVE PAYMENTS, BUT UNLIKE ACTIVE PARTNERS, THIS WILL HAPPEN LESS OFTEN.

FROM THIS BENEFITS THERE ARE CONTRIBUTIONS TO THE MUTUAL FUND OF „WATERFALL CLUB“.



CLOCKS PROGRAM



YOU

PERSONAL PARTNERS



TECH ACCOUNT



CLONE

CLOCKS PROGRAM WORKS USING THREE PLACES MATRIX.

ALL PERSONAL PARTNERS GOES TO STRICTLY UNDER THE SPONSOR. TECHNICAL ACCOUNTS ADDITIONALLY HELP TO CLOSE MATRICES FOR ACTIVE PARTNERS ALSO. PARTNERS WITHOUT PERSONAL REFERRALS CLOSING CYCLES DURING THE TRANSFERING INTO THE MATRIX.

IN THIS WAY PROFIT IN „CLOCKS“ PROGRAM GETS EVERY PARTNER.

\$9 CLOCKS-1



Clocks-1 activation \$9.

ACCRUALS FROM EACH CLOSED MATRIX
\$18.

\$9 REINVEST
\$9 WITHDRAW IN THIS PROGRAM FORMS
MULTIPLE ACCOUNTS

This program opens during partner
registration in the project.

Closing each cycle gives \$9 profit and
reinvest.

Reinvest gives \$9 profit multiple times.



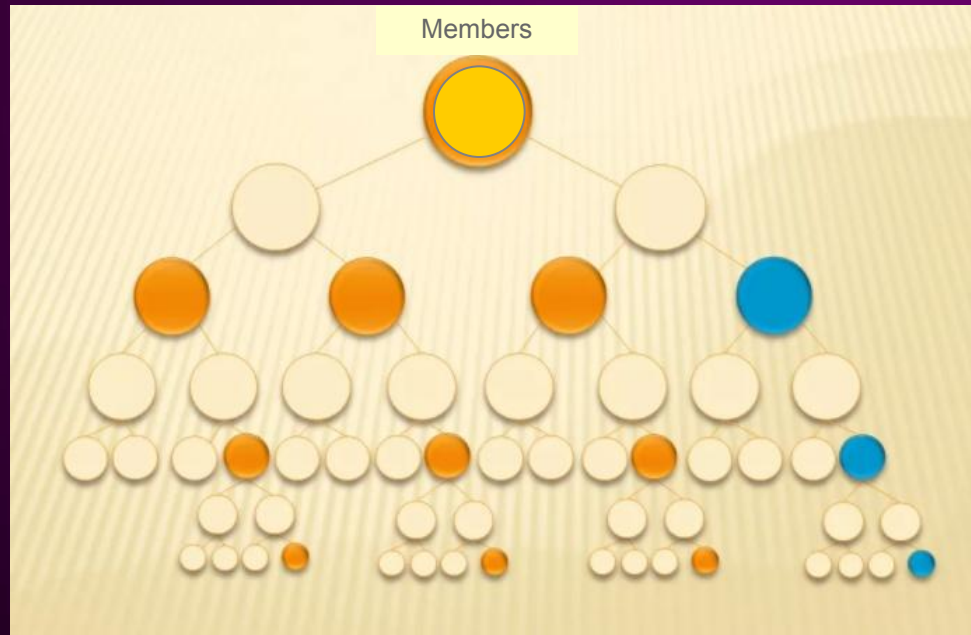
CLOCKS-1 PROGRAM

THIS PROGRAM OPENS DURING PARTNER
REGISTRATION.

CLOSING EACH CYCLE GIVES \$9 PROFIT AND
REINVESTS.

REINVESTS PROVIDING \$9 PROFIT MULTIPLE TIMES

PROFIT FROM CLOSING MATRIZ





\$50

CLOCKS-2 PROGRAM

**PROGRAM ACTIVATION \$50.
ACCRUALS FROM EACH CLOSED MATRIX
\$100.**

***\$50 TO REINVEST
\$40 WITHDRAW
\$10 ON STRUCTURAL DISTRIBUTION.***

***INCOME FROM STRUCTURE \$39
\$30 WITHDRAW
\$9 TO THE «CLOCKS» PROGRAM EACH ACCOUNT IN THIS
PROGRAM AFTER FULL CYCLE WILL GIVE \$70 PROFIT.***



IN „CLOCKS“

Partners who don't have personal referrals, matrices will be closing during activation of a place.

The partner which one was registered long time also will get structural accounts.

BUT his matrices WILL BE CLOSED MUCH LESS FREQUENTLY than partners with personal referrals and after closing matrix \$4 will go to the mutual fund.

So this type of partner will get \$5 profit after closing matrix.

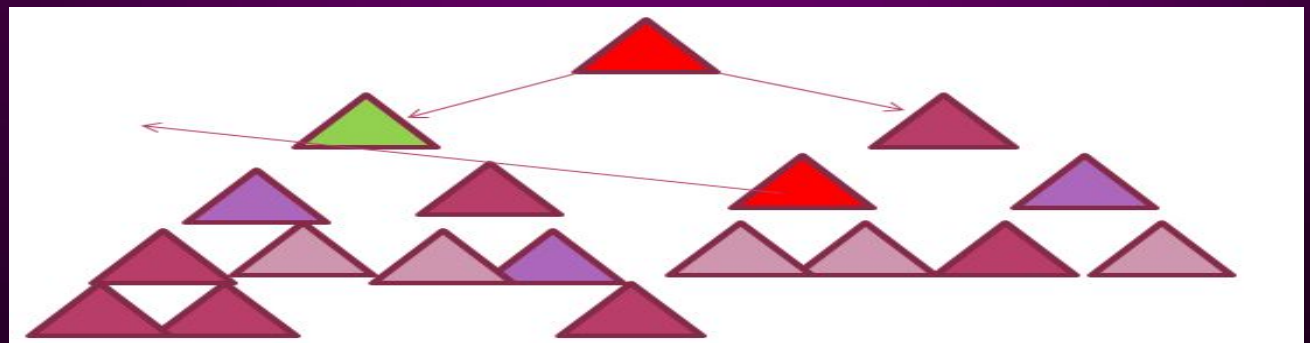
This rule will be applied in each matrix while this type of partner will not get personal referral.

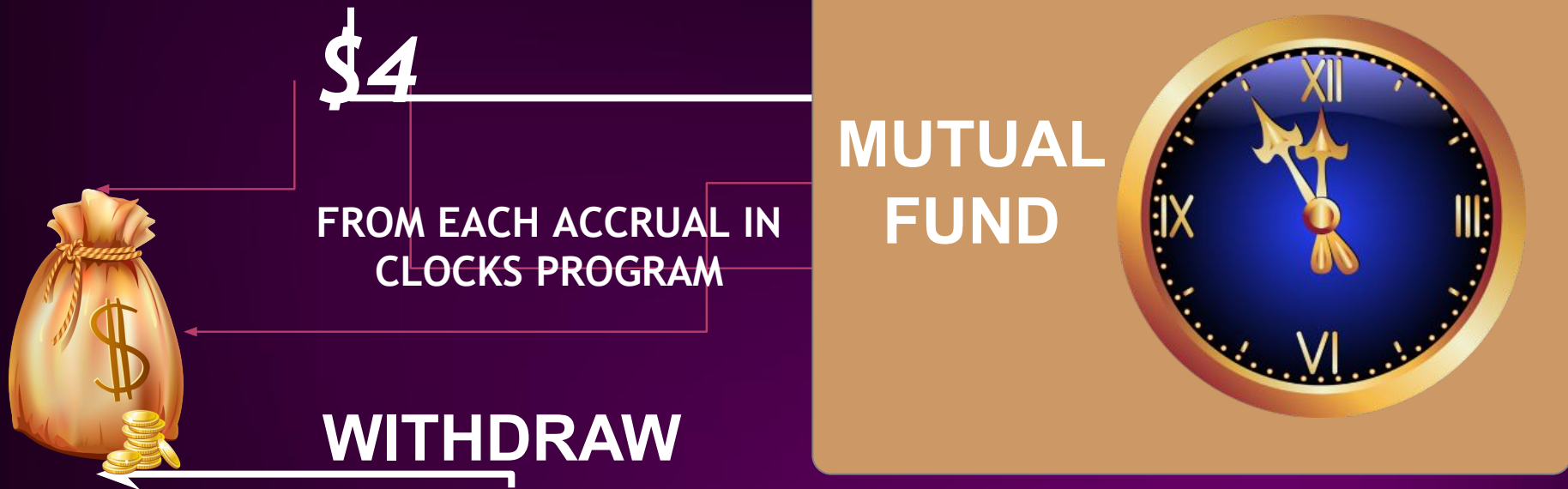
Also 9\$ will be going one time to the mutual fund from each active partner after closing second matrix in CLOCKS program. This amount cannot be refunded.

Closing cycles is strictly bound to the sponsor.

All clones and reinvests close strictly one place in your matrix.

As the result you will have always one reserved place in matrix.





AFTER CLOSING MATRIX OF A NON ACTIVE PARTNER \$4 WILL BE SENT TO THE MUTUAL FUND. SO AFTER CLOSING MATRIX WILL GET \$5 PROFIT.

THIS CHARGES WILL BE FROM EACH CLOSED MATRIX, WHILE PARTNER WILL NOT GET PERSONAL REFERRAL.

ALSO \$9 WILL GO ONE TIME TO THE MUTUAL FUND FROM EACH ACTIVE PARTNER AFTER CLOSING 2nd MATRIX IN THIS PROGRAM THIS AMOUNT CANNOT BE REFUNDED.

WATERFALL CLUB - SOCIAL PROJECT

**WHO CANNOT INVEST IN THEIR
OWN PARTICIPATION CAN USE
MUTUAL FUND PROGRAM.**



MUTUAL FUND



- **WATERFALL CLUB has MUTUAL FUND.**
- **The function is simple. Every partner can deposit his funds. Accruals from closing cycles and closing matrices will be the same according to marketing and rules of the club.**
- **Partner can withdraw back funds at any time. With positive balance in your account, funds can be refunded right on demand.**
- **Partner who got a credit, there will be 10% charged from amount of credit during closing cycles. This 10% will get partner who invested to the fund. In control panel (cabinet) you can always see info about balance.**
- **Any partner can request credit from cabinet. Credit will be charged automatically after income.**

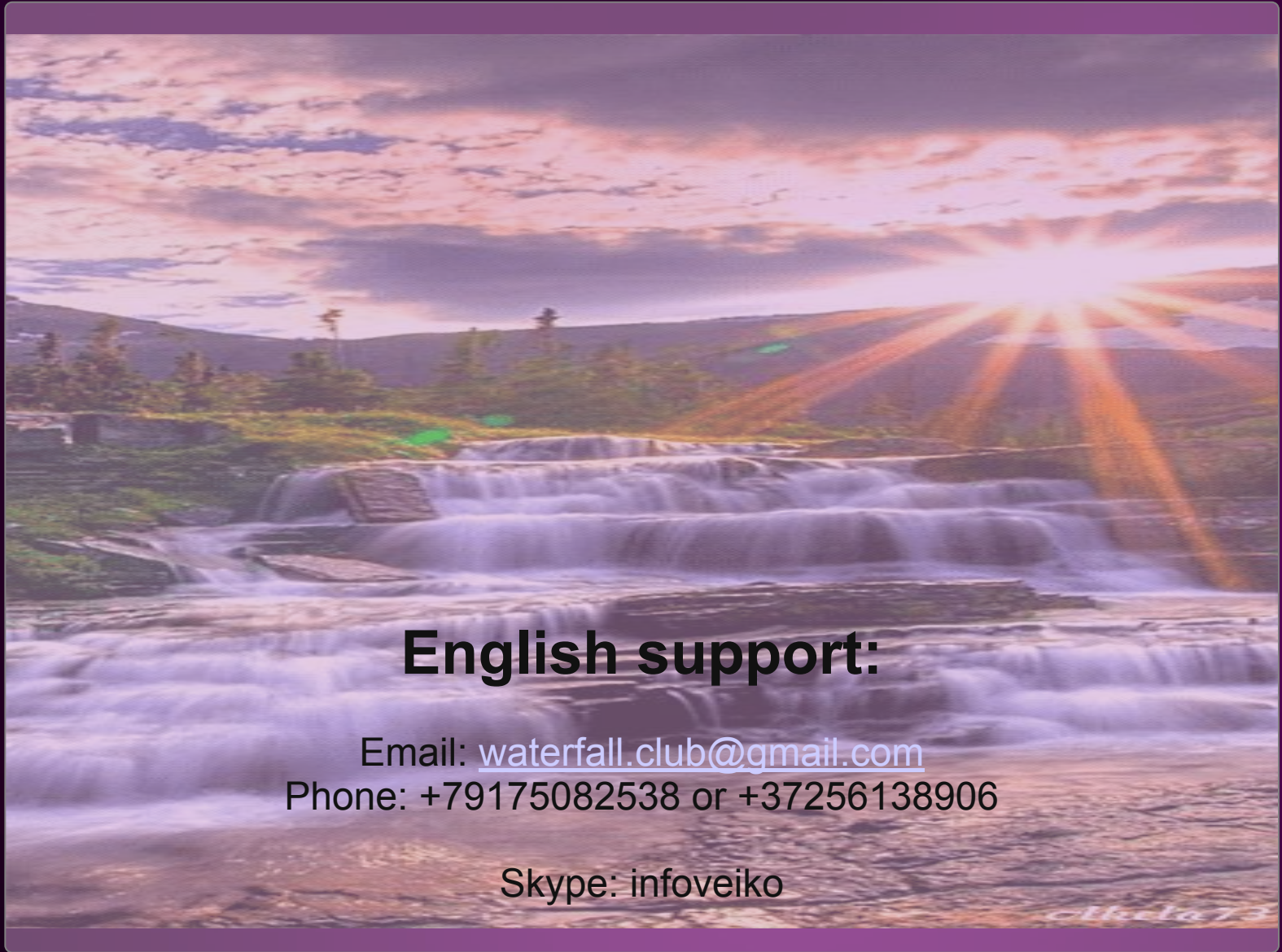


WATERFALL - IT IS RELIABILITY
WATERFALL - IT IS PROFITABILITY
WATERFALL - IS THE NEW GENERATION
WATERFALL – IT IS PROFIT TO ALL,
WITHOUT EXCLUSION.

MARKETING OF WATERFALL
GIVES AMAZING RESULT
AND WE INVITE EVERYONE
WHO WANTS GET REAL PROFIT.

WELCOME TO WATERFALL CLUB !





English support:

Email: waterfall.club@gmail.com

Phone: +79175082538 or +37256138906

Skype: infoveiko

THANK YOU!