



**LAB University of
Applied Sciences**



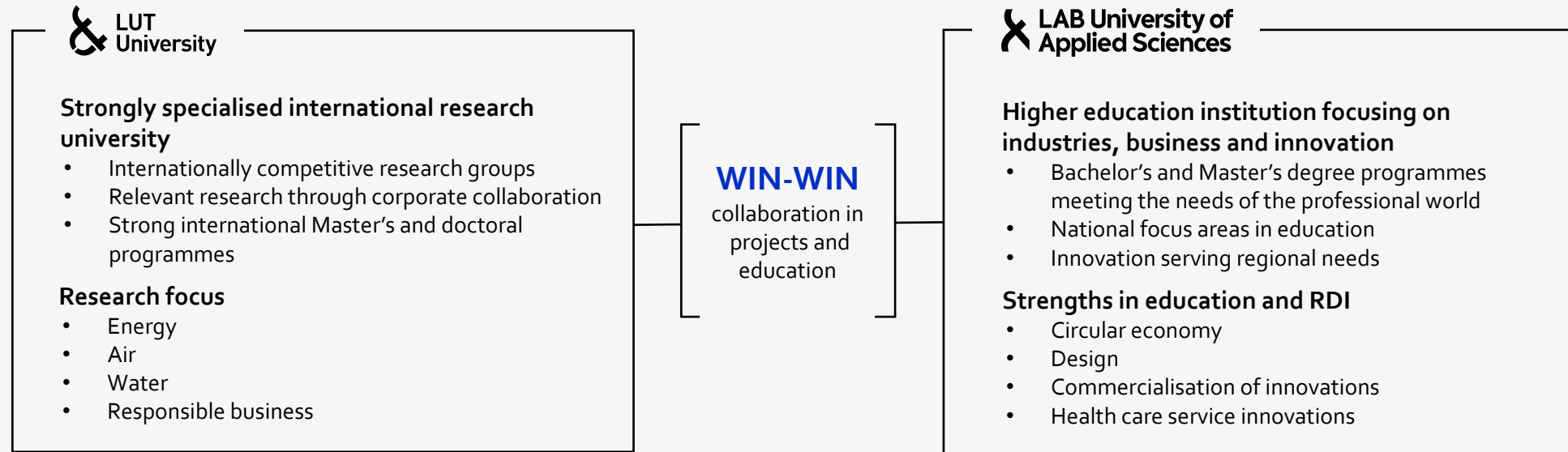
The best of both worlds

LAB is a university of applied sciences focusing on the working world and innovation. We offer students the best of studies and the professional world in one package. We boldly experiment with new approaches in collaboration with our corporate partners. We play a role in the growth, internationalization and sustainable development of businesses.

We develop solutions for the sustainable use of materials, make people's daily lives easier and turn innovations into international success stories. In other words, we contribute to the economic prosperity of businesses and society.

2 missions, 2 campuses, 2 organisations

LUT GROUP



**Together
we are more
on the Green
Campuses**

Education: digital collaboration, shared Language Centre, continuing professional education, guidance on study paths

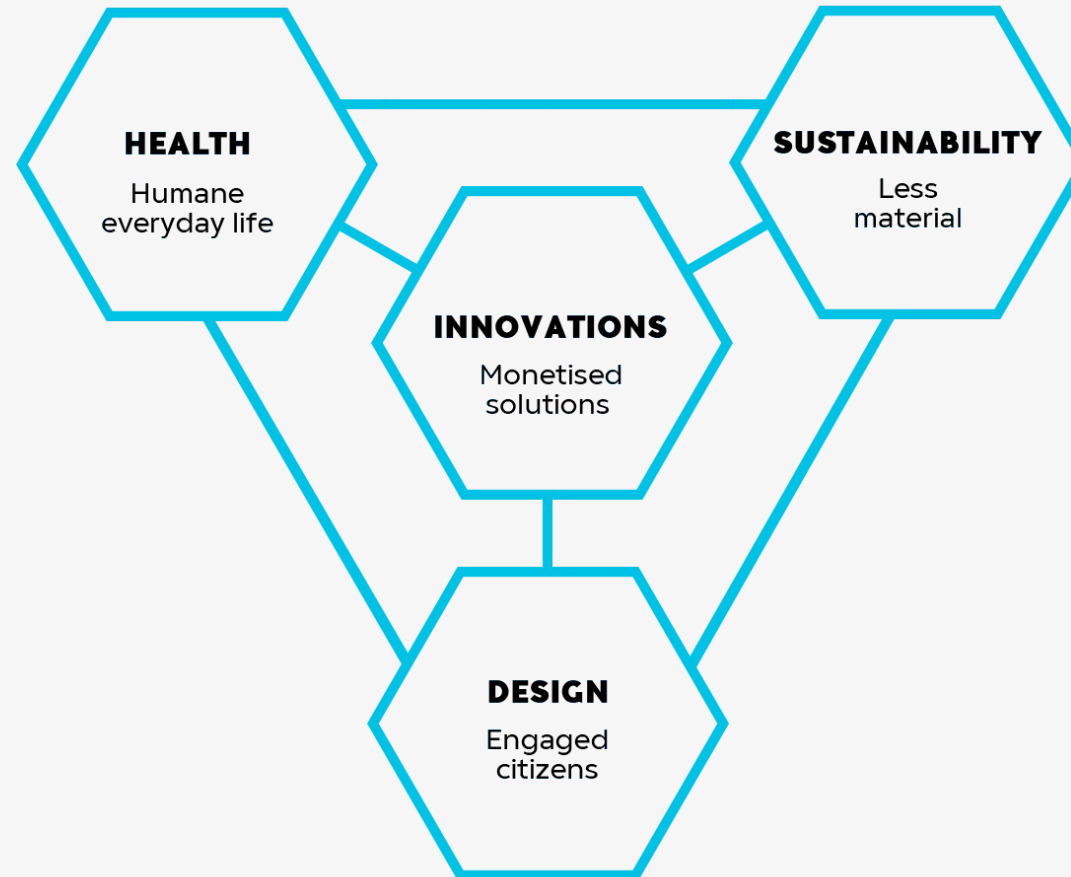
Internationalisation: international programmes subject to a tuition fee jointly marketed in India, China, Russia and Vietnam

Impact: Green Campus Open, Business Mill student entrepreneurship, corporate collaboration

Shared University Services

Strategy

BETTER WORLD OF WORK



Key competences

SUSTAINABILITY

Sustainable material cycles

- Technical and biological loops
- Resource efficiency
- Sustainable community
- Systemic approaches to the circular economy

INNOVATIONS

Solutions for growth-oriented business

- Experimental development ecosystems for innovations
- Business design and thick value
- Renewing and evolving entrepreneurship
- New radical initiatives

DESIGN

Designing sustainable solutions

- Designing sustainable products, services and environments
- Smart human-driven design and communication
- Design for behaviour change
- Arts for radical renewal

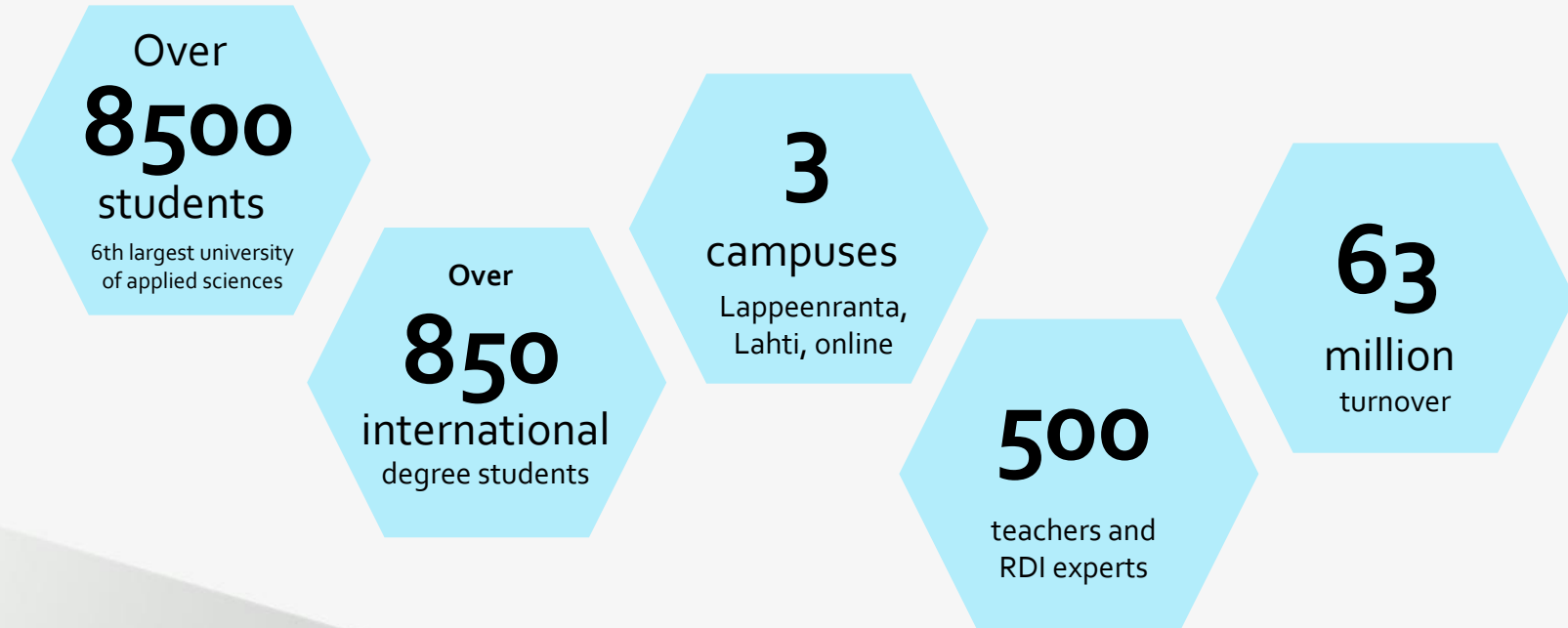
HEALTH

New service innovations and solutions

- Well-being from physical activity and the living environment
- Social inclusion and safety in everyday life
- Health promotion and smart self-care
- Efficient service chains



LAB in figures



**Two cities,
three campuses**

Lappeenranta

- International university city by Lake Saimaa
- Finalist for the European Green Leaf Award 2020
- Extensive student and recreational services
- Easy access
 - Train to Helsinki 2 hours
 - Distance to St. Petersburg 200 km
 - Direct flights to many European destinations

Population:

73 000

1 in 10 is a higher education student





Lappeenranta campus

LAB's and LUT University's shared campus is in the district of Skinnarila by Lake Saimaa.

Extensive services for students on campus: e.g. library, cafeterias, gym, grocery store.



3400
students
on
campus

450
international
|
degree
students

Lahti

- Known internationally for its sporting events, design and high-level cultural services
- European Green Capital 2021
- Perfect location
 - Train to Helsinki 1 hour
 - Direct train to St. Petersburg and Moscow

Population:
120 000





Lahti campus

Modern learning environment in a former industrial factory in the district of Mukkula.

The campus is open around the clock and houses a range of services such as a gym and other sports facilities, a restaurant and an ice cream bar.

400

international
degree
students

5000

students
on campus

Online campus

Bachelor of Social Services | Bachelor of Business Administration | Bachelor of Engineering

**Master of Health Care and Social Services:
Future managers in social services and health care**

- Complete your degree online where and when you like
- Online degree programmes attract the most applicants (joint admission 2020)



Education

LAB reinvents education

- Overlaps learning and work
- Transforms the conventional approach to degree studies
- Responds rapidly to the changing needs of the working world and the global education market
- Increases the number of highly educated graduates in the professional world



Studies at LAB

- 8 Bachelor's degree programmes in English
- Student exchange: 302 partner institutions in 86 countries
- Open higher education and professional specialisation programmes: 18 000 ECTS credits completed in 2019



LAB Design and Fine Arts

Bachelor of Culture and Arts
Industrial Design
Packaging and Brand Design





Technology

Bachelor of Engineering (English)
Mechanical Engineering

Social Services and Health Care

Bachelor of Health Care
Paramedics (Nurse)





Business

Bachelor of Business Administration (English)
Business Information Technology | International Business

Tourism and Hospitality

Bachelor of Hospitality Management
Tourism and Hospitality Management |
Hotel and Restaurant Management

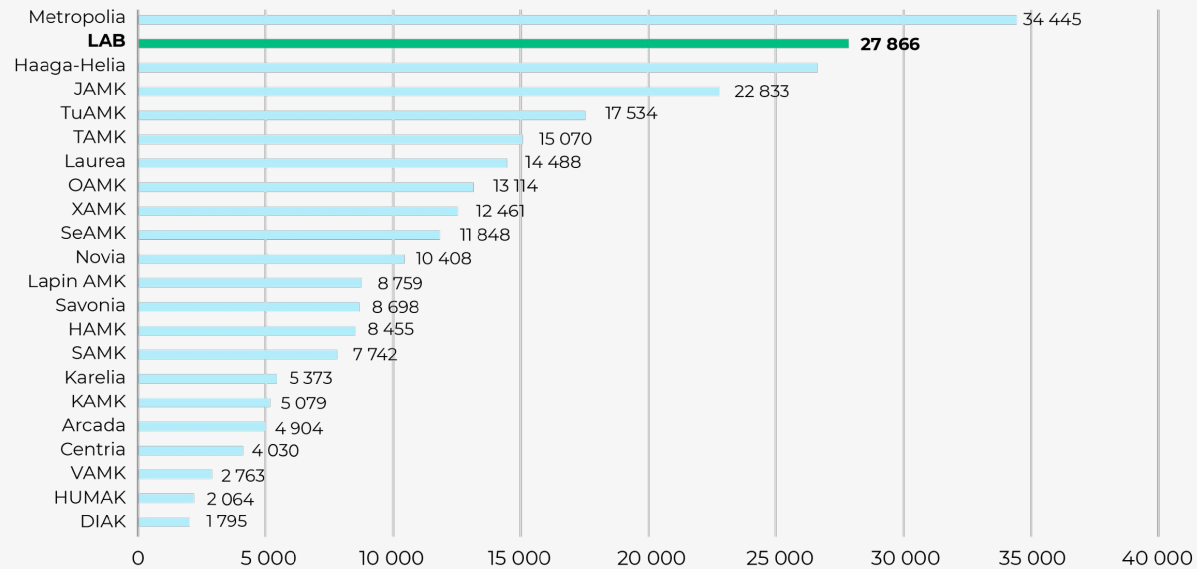


Successful International Education

- 850 international degree students, 180 graduates
- 330 incoming exchange students

International ECTS credits in 2019

Completed abroad (studies and work placement) + incoming exchange students



Admission

- **Regular Admission**

- Application periods in January and September
- 1. High School Diploma
- 2. SAT Score **or** an Online Entrance Examination

- **Rolling Admission**

- Coming in January 2021



Tuition Fees & Scholarships

- Scope of the programmes is either 210 or 240 ECTS credits
- Duration 3 years or 3,5 years
- Tuition Fee EUR 8000 / Academic Year
- 50% Scholarships are available from the 2nd year if a student completes 55 credits during the 1st academic year.



Corporate collaboration

|| The LAB University of Applied Sciences focuses on the world of work and innovation. Together with businesses, we will boldly experiment with new approaches to work and learning. We develop solutions for the sustainable use of materials, make people's daily lives easier, and innovate. We contribute to the economic growth and prosperity of businesses and society.

||



Business Mill and StartHub

Business Mill, Lappeenranta

- Provides South Karelian businesses and start-ups access to LAB's and LUT's services
 - 200 customer teams and companies, 40 cases solved
- Team of four experts and 10 LAB teachers
- Close collaboration with business services in the region

Stands out from other business services and incubators in Finland

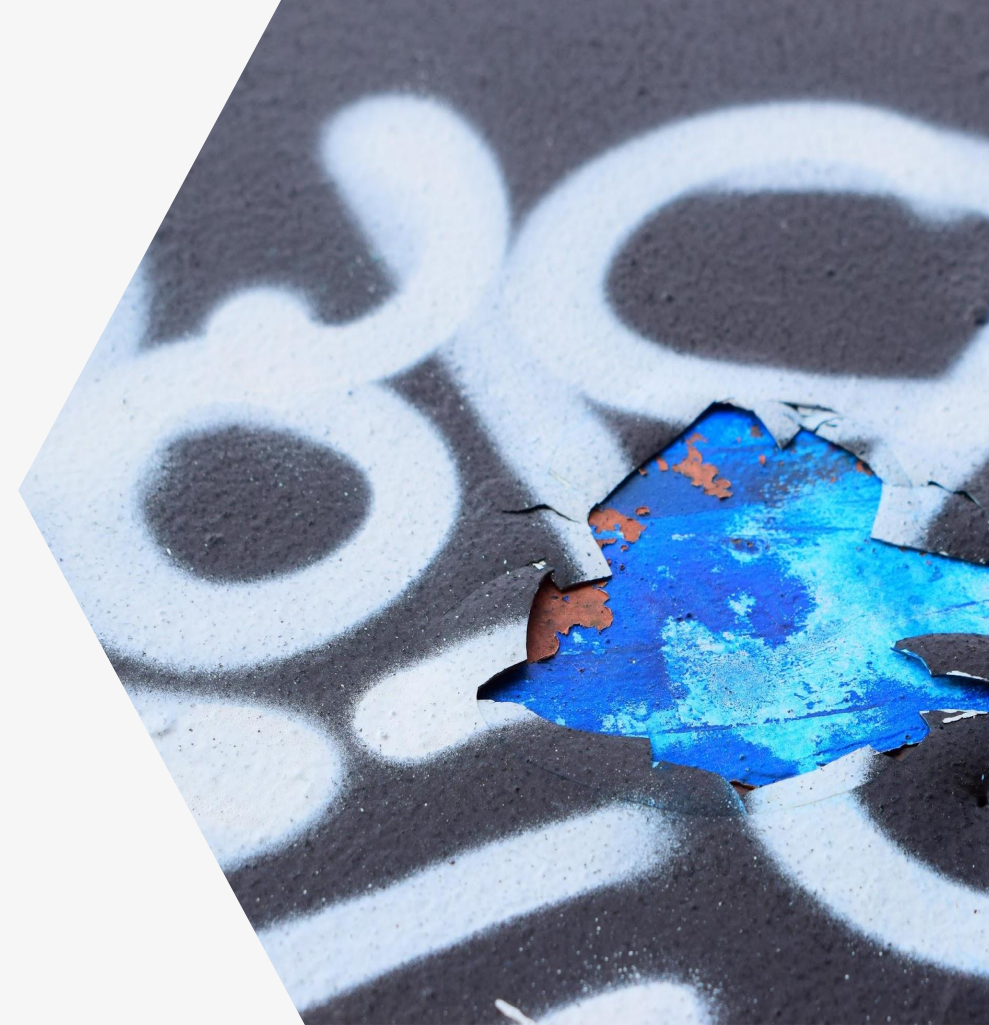
StartHub, Lahti

- 22 registered customer companies, 1 StartHub start-up
- Multiple fields (circular economy, online commerce, artificial intelligence), companies at different stages: some not founded yet, some in their first funding round
- Weekly events and network community
- Online accelerator for growth-oriented businesses
- Network of 40 experts

Case: Corona aid for companies

"Many companies need to digitalise their operations rapidly. We will help, guide and find solutions quickly and in an agile manner. We help to create ideas or prepare applications for financial assistance from Business Finland or the Centre for Economic Development, Transport and the Environment. We're a sparring partner. We help and support."

- Quick operational model that engages all core actors
- LAB and Business Mill in key roles
 - over 160 demanding business cases handled or ongoing
- South Karelia attracts positive COVID-19 business funding decisions above average
- Proactive: LAB students have contacted over 1200 businesses



LUT Group

LAB – part of LUT Group

LUT University + LAB University of Applied Sciences = LUT Group

- Corporate group of independent higher education institutions
- Collaboration brings added value:
 - international student recruitment and education export
 - novel education paths
 - impact on industries and business
- Goal: everyone wins



lab.fi | Social media: LABfinland

 LAB University of
Applied Sciences