

## **Smart Home & Business Use HD Cameras**

---

Visit our website for more information

[WWW.CAMNOOPY.COM](http://WWW.CAMNOOPY.COM)



**SHEN ZHEN SOPOODA TECHNOLOGY Co., Ltd**

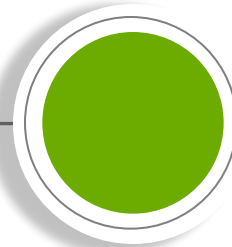
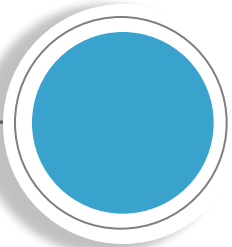
# Contents

 Company Profile

 Smart Cameras & Software Introduction

 Secondary R&D Technical Support

**Company  
Profile**





### Company Name

Shenzhen Sopooda Tech Co., Ltd

### Management Ideas

Products difference is different in enterprises

### Company Address

1F, 2F, 4F, 5F/BLD E, Dong Hai Wang Industry Zone A, Yang Mei, NO. 369, Bu Long Road, Ban Tian, Shenzhen, China

### General Manager

Fu Gang








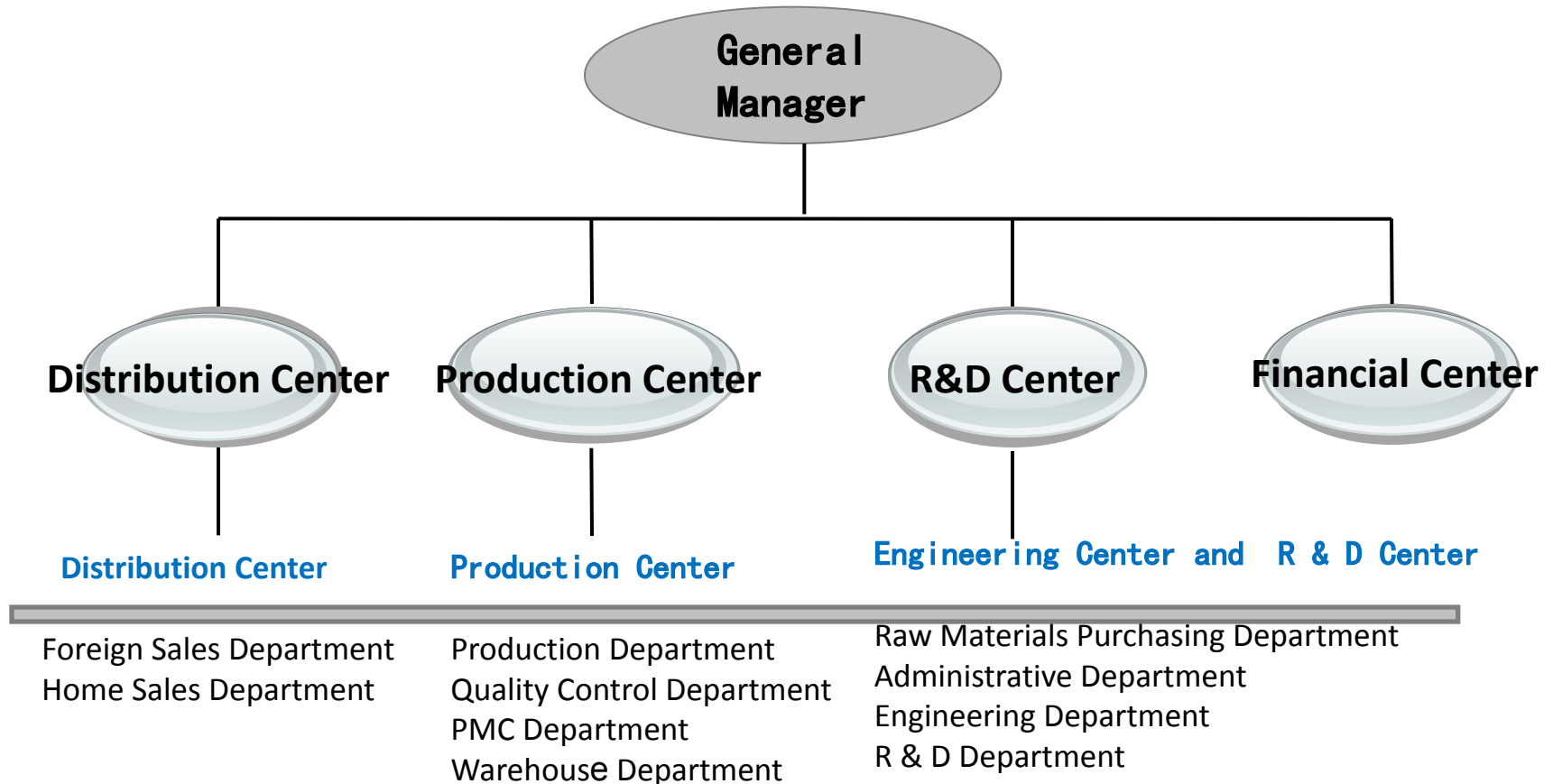
## Company Introduction

Profile

Production

Quality

Established in	2010
Employees number	About 200 employees
Total Areas	3,300 square meters (4 floors in all )
Sales Revenue	USD 10,000,000 (2013) , USD 13,500,000 (2014)
Production capacity	Home cameras: 50,000–60,000 set/month; Industry cameras: 40,000–50,000 set/month; others (NVRs, DVRs, Kits) :10,000–20,000 set/month
Partner cooperation	  
R&D teams	35–40
OEM cooperative partners	Huawei, Stanley (America), China Telecom, China Mobile, China Electronics, COSHIP Electronics, TCL
overseas subsidiary company	ANYIN Techologies (HONG KONG) Co., Ltd





## International Quality Process of Innovative Camera Manufactures

1

International Quality, refer to foreign counterparts, welcome pre-shipment inspection made by domestic and overseas' clients

2

Innovation: innovation is not only a product or technology innovation, but production management innovation

3

Camera Manufacturer: with high-level 10 years experiences in industrial and civil camera field

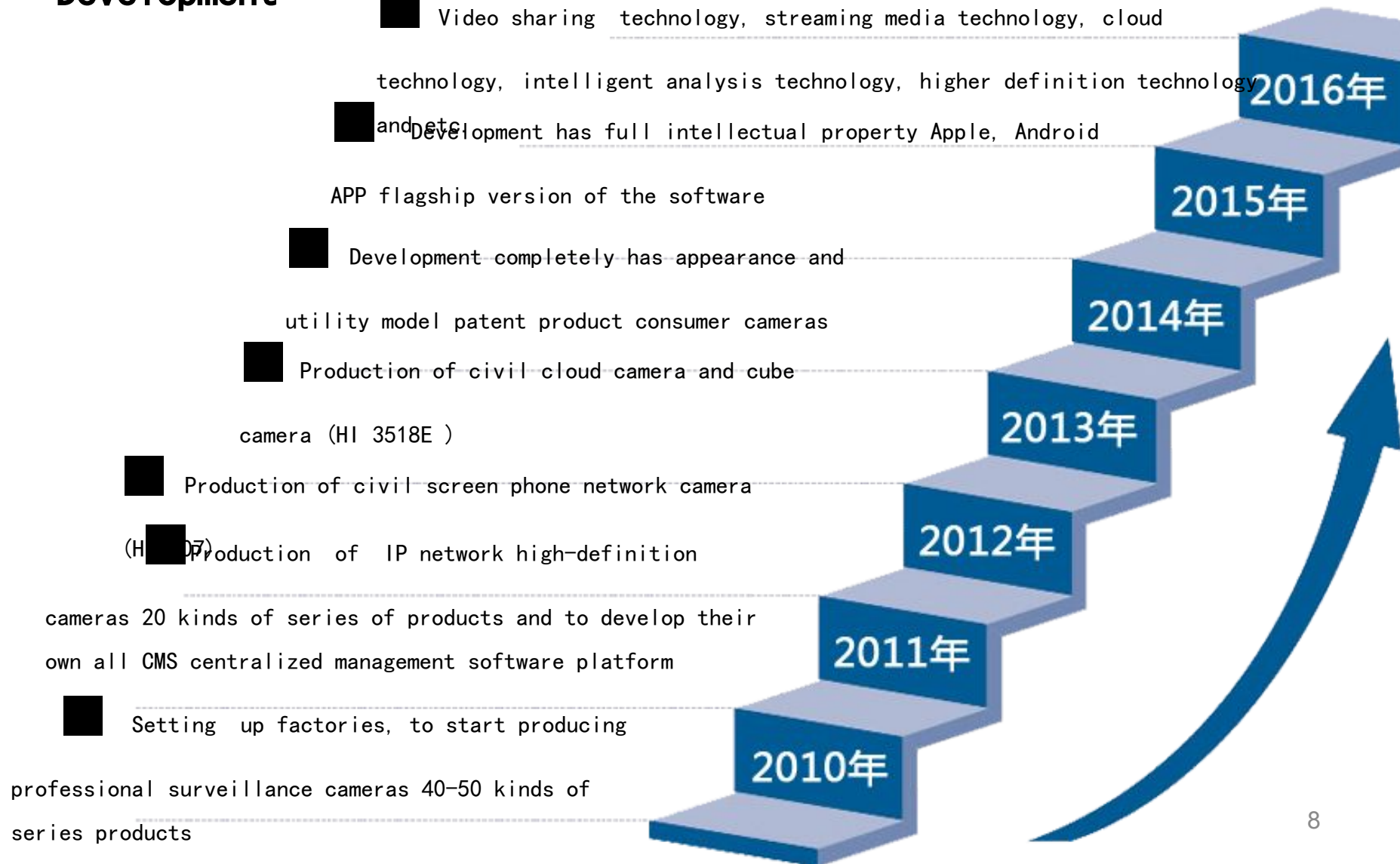




## History&Technology

Profile Production Quality

### Development







## Company Pictres

Profile    Production

Quality

[2F  
Front  
Desk]



[Product  
ion  
Showroom  
]



[VIP Room  
]



[5F  
Front  
Desk]



[Recept  
ion  
Room]



[Meeting  
Room]



[Business  
Center]



[Manage  
rs  
Room]



**[R&D Dept. ]**



## Technology Team

**[R&D Dept. ]**

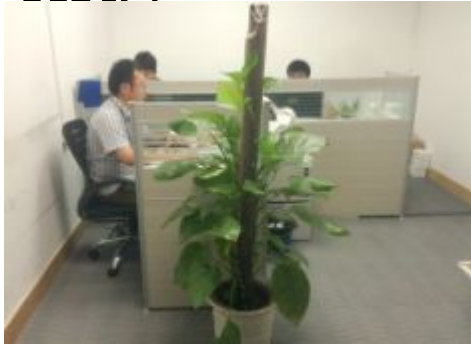


5 hardware engineers  
10 the underlying software engineers  
5 APP engineers  
3 software test engineers  
3 production engineers  
4 technology support engineers

**[Technology Dept. ]**



**[Technology Dept. ]**

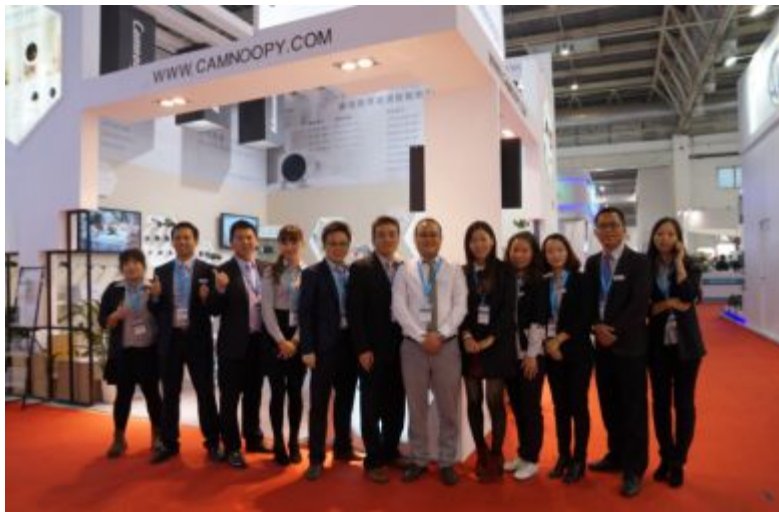


## Company Strength: Talent Team

Profile

Production

Quality







[2015 America CES Show]



[2015 America CES Show]



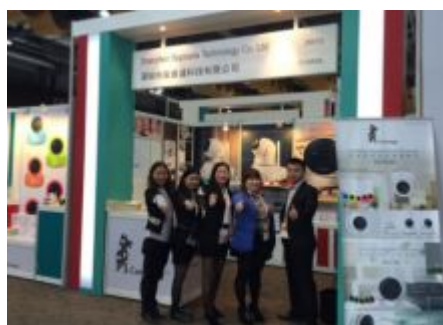
[2015 Taipei Show]



[2015 Taipei Show]



[2015 HongKong Show]



[2015 HongKong Show]



[2015 Russia Show]



[2015 Russia Show]





Monthly Production Capacity 50,000-60,000 sets



## Workshop Pictures

Profile    Production    Quality

[Production Office]  
[PMC QC and Engineer]



[Anti-Dust Room]  
[Before visiting workshop]



[Anti-static]  
[After Anti-dust]



[FFU Clean Room]



[Labortary]



[Aging Room]  
[100% test]



[High temperature tunnel]  
[module dehumidification]



[QA Test]  
[100% Test]





## Workshop Pictures

[Storage  
Office]

[Raw Materials and  
Finish products]



[Material  
Warehouse]

[warehousing&IQC quality]



[Warehouse of Finished  
Products]



[Screen Printing Room]

[OEM logo  
printing]



[Production  
Quality  
Control  
& Analysis]



[Production  
Board  
Notice issued]





[Production  
Visit]  
[Customer Visiting  
channel]



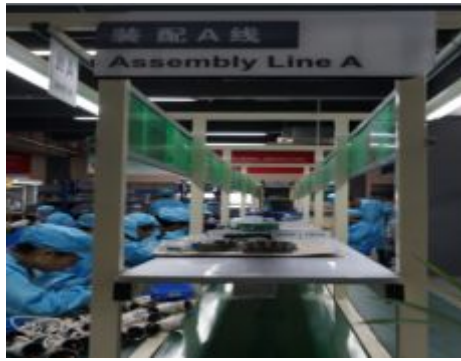
[6  
Assembly  
Line]  
[A line & IP products]



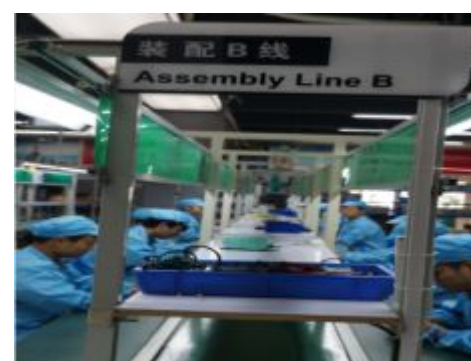
[Packag  
ing  
Line]  
[final products package]



[A Line]  
[More than 500 sets ]



[B Line]  
[100-500 sets ]



[C Line]  
[ 100sets ]







## Quality Control

Profile

Production

Quality

### 1. Total Quality Management Program:

**7 All, 3 No**

**3 All:**  
1. All staff's participation  
2. All control of the whole process  
3. All company QC's activities

**3 No:**  
1. No receipt of disqualified products  
2. No production of disqualified products  
3. No disqualified products out

**4 All:**  
1. All customer-centric  
2. All to prevention-oriented  
3. All data used to speak  
4. All go according to the PDCA circle





## 2. Quality Management System:

### Quality Policy & Objective s

- Quality Policy: standardize the management, meet the standard requirements; Continuous improvement and exceed customer requirements.
- Customer satisfaction : the qualified rate of products:  $\geq 98\%$   
customer satisfaction:  $\geq 99$
- Products Aging Test: each about 100% aging test.

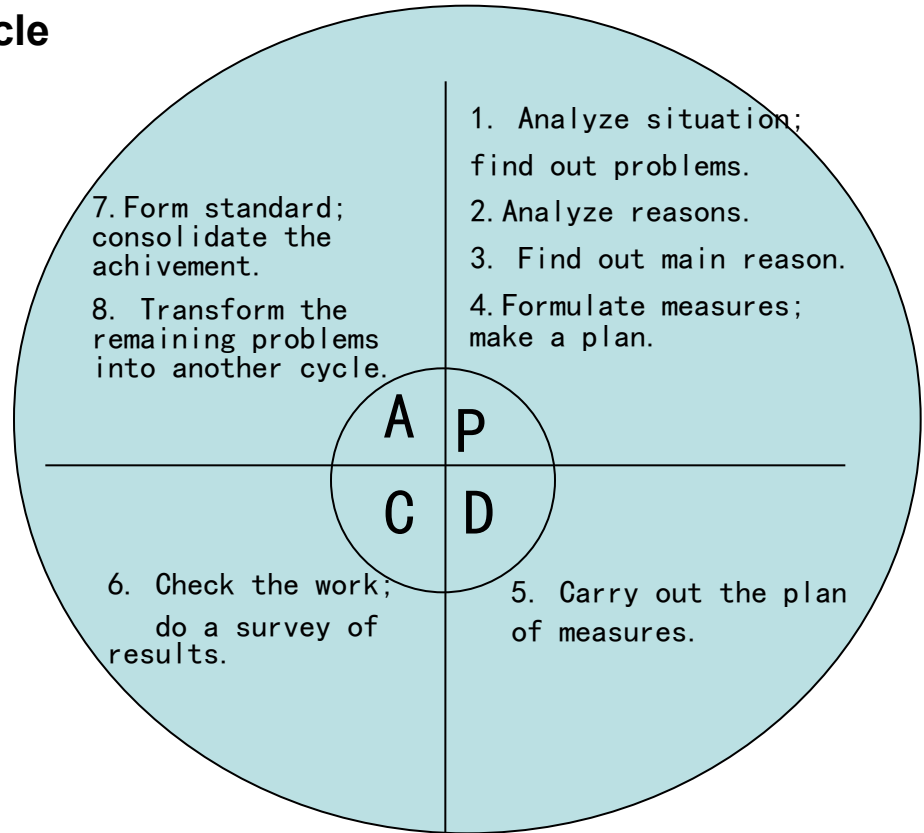
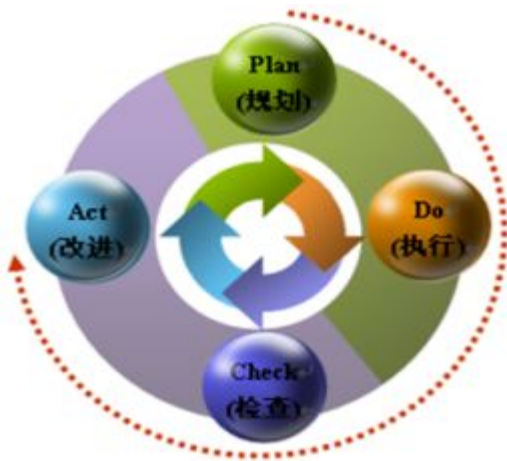




### 3. Total Quality Management (Quality Control Circle)

#### The Quality of the Product Planning Cycle

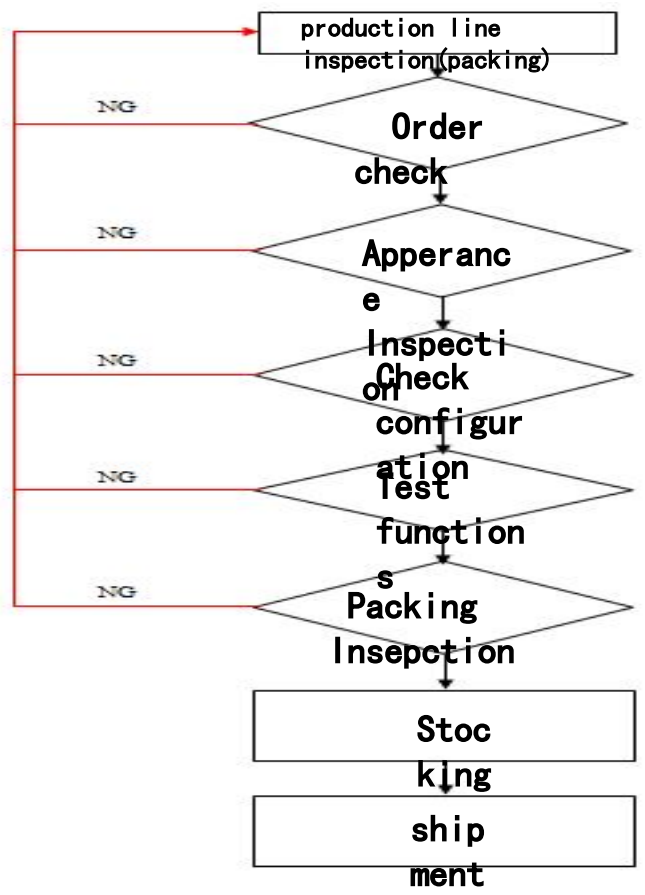
PDCA



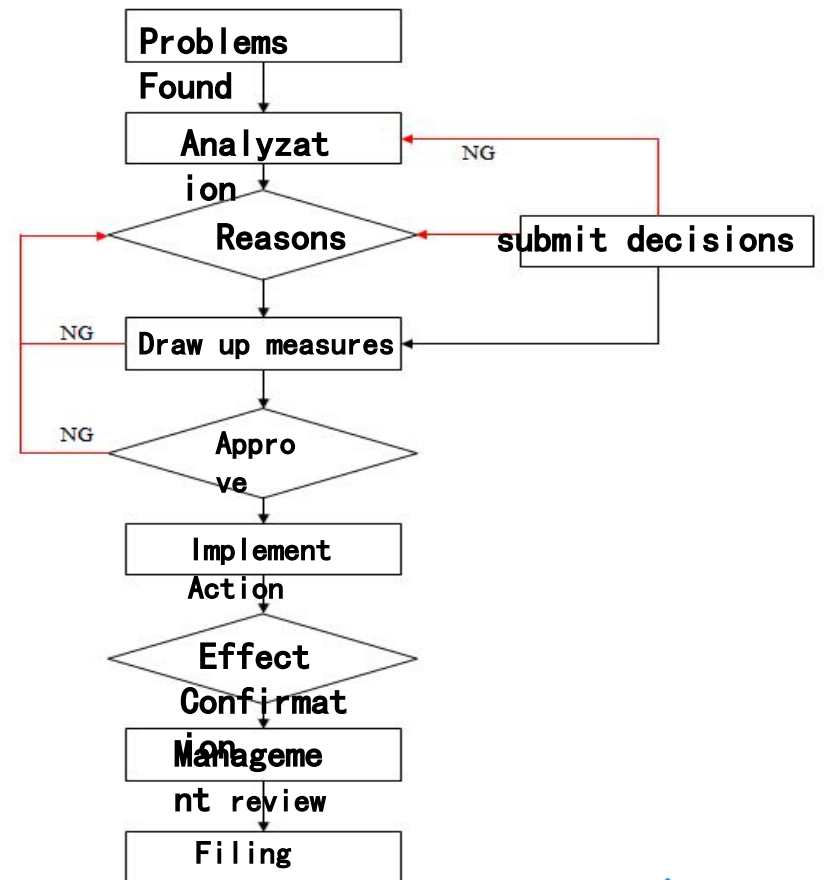


### 4、Flow Chart about Quality

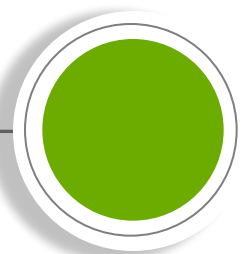
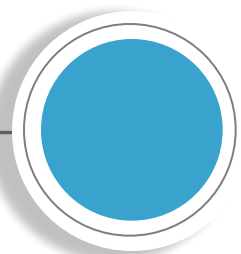
**The Flow Chart of Outgoing Inspection**



**The Flow Chart of Corrective and Preventive Action Operation**

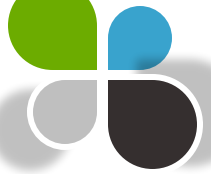


**Smart Cameras  
Production &  
Software  
Introduction**



- 1 Smart Cameras & Camera Software**
- 2 Smart Cameras Hierarchical Management System**
- 3 IP Cameras NVR Kits**





**CN-PT200**



**CN-C100**





Camnoopy

# High-end full function Camera CN-PT200



Camera Hardware  
lightspot:

. Make-up box and pure fresh appearance, intelligent smart home style, excellent artwork quality.

. UV mirror craft, scratch-resistant, dust prevention

. Allocation install chassis, Wall ceiling installation, easy for lifting, wide angle for rotate

. USA OV9712+Hisilicon 3518E 720P High resolution chipset

. Temperature and humidity sense and alarm push

. 3MP High resolution lens, clear and distinguishable show in a big screen

. Allocation alarm intention antenna interface, wireless alarm can extend 80-100 meters.

. Draw-out type all metal IRCUT double filter, high reliable, stable life

. 2 pcs high power infrared ceramic led, clear imagic in night time

. Wired or intelligent wireless WIFI, easy to connection

. Max 64ch/8 defense Zone wireless alarm, strongly alarm function

. Horizontal 0~355 degree, vertical 120 degree move

. Two way audio intercom, eliminate circuit noise suppression, High-power speaker

. Multistory precision heavy gold PCB board craft, moistureproof not easily oxidized

. Domestic and international certification USB power adaptor, low failure rate

. easy install, easy contact with internet, easy use, easy maintain



Color optional

## Accessories optional

		
Wireless Alarm Remote Controller A20	Temperature control line A9	Wireless Alarm Door Detectors A-11
		
PIR detector A12	wireless smoke detector A-13	Gas Detector A-14








# High-end full function camera CN-C100



Color optional

Accessories optional

		
Wireless Alarm Remote Controller A20	Temperature control line A9	Wireless Alarm Door Detectors A-11
		
PIR detector A12	wireless smoke detector A-13	Gas Detector A-14

Camera Hardware  
lightspot:

. Make-up box and pure fresh appearance, intelligent smart home style, excellent artwork quality.

. UV mirror craft, scratch-resistant , dust prevention

. Aluminum alloy is a circle, Laser carving process, long time use

. With installation chassis, wall mounting, easy for lifting, big rotating Angle

. USA 0V9712+Hisilicon 3518E 720P High resolution chipset

. Temperature and humidity sense and alarm push, strongly alarm function

. Two way audio intercom, easy to chat.

. PIR human induction alarm, powerful alarm function

. 3MP High definition lens, large screen

. Draw-out type all metal IRCUT double filter, high reliable, stable life

. 2 pcs high power infrared ceramic led, clear imagic in night time

. Wired or intelligent wireless WIFI, easy to connection

. Max 64ch/8 defense zone wireless alarm, strongly alarm function

. Manual horizontal 0~355 degree, vertical 120 degree move

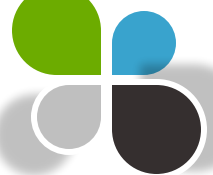
. Two way audio intercom, eliminate circuit noise suppression, High-power speaker

. Multistory precision heavy gold PCB board craft, moistureproof not easily oxidized

. Domestic and international certification USB power adaptor, low failure rate

. easy install, easy contact with internet, easy





**CN-PT100**  
**CN-C200D**



**CN-PT100E**



# Wireless alarm intelligent camera CN-PT100



Can customize case color

**Camera Advantage:**

- . Clever and smart design, perfect technological quality
- . USA OV9712+Hisilicon 3518E 720P High resolution chipset
- . Large screen display is clear
- . Draw-out type all metal IRCUT double filter, high reliable, stable life
- . 2 pcs high power infrared ceramic led, clear imagic in night time
- . Wired or intelligent wireless WIFI, easy to connection

. Max 64ch/8 defense zone wireless alarm, strongly alarm function

. Horizontal 0~355 degree, vertical 120 degree move

. Two way intercom, eliminate circuit noise suppression, High-power speaker

. Multistory precision heavy gold PCB board craft, moistureproof not easily oxidized

. Domestic and international certification USB power adaptor, low failure rate

. easy install, easy contact with internet, easy use, easy maintain

**Accessories optional**

Wireless Alarm Remote Controller A20	Temperature control line A9	Wireless Alarm Door Detectors A-11
PIR detector A12	wireless smoke detector A-13	Gas Detector A-14

# Wireless alarm intelligent camera CN-PT100E



Color optional



. Max 64ch/8 defense zone wireless alarm, strongly alarm function

. Horizontal 0~355 degree, vertical 120 degree move

. Two way intercom, eliminate circuit noise suppression, clear voice.

. Multistory precision heavy gold PCB board craft, moistureproof not easily oxidized

. Stable chipset with white switch power supply, mature and stable

. easy install, easy contact with internet, easy use, easy maintain

Camera Hardware lightspot:

. Clever and smart design, perfect technological quality

. USA 0V9712+Hisilicon 3518E 720P High resolution chipset, slim as hair




. 2MP High definition lens, display is clear in pc

. Draw-out type all metal IRCUT double filter, high reliable, stable life

. 2 pcs high power infrared ceramic led, clear imagic in night time

. Wired or intelligent wireless WIFI, easy to connection

## Accessories optional

		
Wireless Alarm Remote Controller A20	Temperature control line A9	Wireless Alarm Door Detectors A-11
		
PIR detector A12	wireless smoke detector A-13	Gas Detector A-14



## Wireless alarm intelligent camera CN-C200D



### Camera Advantage:

- . Little drops of shape design, perfect technological quality
- . USA OV9712+Hisilicon 3518E 720P High resolution chipset
- . 2MP High definition lens, display is clear in pc
- . Draw-out type all metal IRCUT double filter, high reliable, stable life
- . 1 pc high power infrared ceramic led, clear imagic in night time
- . Intelligent wireless WIFI, easy to connection

### Camera Advantage:

- . Max 64ch 8zone wireless alarm, strongly alarm function
- . Manual horizontal 0~360 degree, vertical 90 degree move
- . Two way intercom, eliminate circuit noise suppression, clear voice.
- . Multistory precision heavy gold PCB board craft, moistureproof not easily oxidized
- . Stable chipset with white switch power supply, mature and stable
- . easy install, easy contact with internet, easy use, easy maintain

### Accessories for

<p>Wireless Alarm Remote Controller A20</p>	<p>Wireless Alarm Door Detectors A-10</p>	<p>Wireless Alarm Door Detectors A-11</p>
<p>PIR detector A12</p>	<p>wireless smoke detector A-13</p>	<p>Gas Detector A-14</p>



High price advantage & High definition & intelligent camera



CN-PT100C



CN-C100E



# SOPOODA®

High price  
advantage&High  
definition&intelligent  
camera CN-PT100C



Camera Hardware  
lightspot:

. Clever and smart  
design, perfect  
technological quality

. USA OV9712+Hisilicon  
3518E 720P High  
resolution chipset

. 2MP High definition  
lens, display is  
clear in pc

. Draw-out type all  
metal IRCUT double  
filter, high  
reliable, stable life

. 12MIL high power  
infrared ceramic  
led, clear imagic in  
night time

. Wired or  
intelligent wireless  
WIFI, easy to  
connection



Camera Hardware lightspot:

. Cable input/output  
alarm, Switch quantity/High  
and low level alarm output  
optional

. Horizontal 0~355  
degree, vertical 120 degree  
move

. Two way  
intercom, eliminate circuit  
noise suppression, clear  
voice.

. Stable chipset with white  
switch power supply, mature  
and stable

. Built-in professional  
anti-dust mesh, dust-proof  
and mosquitoes

. easy install, easy  
contact with internet, easy  
use, easy maintain



# SOPOODA®

## Cost-effective HD Smart Home Camera

### Model : CN-C100E



USB-RJ45 Cable A7  
(Optional)



Different color  
(Optional)

### Camera Advantage:

- .Unique smart home housing design with outstanding Craft
- .UV Material , scratch-proof and dust-proof
- .Rigid aluminum tray with laser engraving technology
- .Package with installation base, easy to install in wall and ceiling in a big rotation angle
- .2.0MP LEN, Clear image in Computer
- .0V9712+Hi3518E 720P HD Chip
- .Built-in IR cut filter in metallic material, long life, high reliability and stability
- .One piece High- power infrared ceramic lamp , clear night image
- .Smart WIFI connection (wire optional), easy to set up
- .Manual Ajust: horizontal 0~360° , Vertical:90°
- . Two-way audio,3D Voice Echo cancellation and noise suppression technologies
- .Precision Immersion Gold Multilayer PCB board technology, Moistureproof and difficult to oxidize
- .Mature and stable high quality white power adaptor
- . Easy to install, setting,use and maintain





## 30M Infrared Night version outdoor waterproof IP camera

Model : CN-720K3



### Camera advantage :

.Metal housing,outdoor waterproof, outstanding housing craft, wall mounting and ceiling optional,can work at any complex environment in the outdoor

.3MP 3.6MM LENSs, Clear image in big LCD screen

.36 pieces 12MIL High-power infrared lamp, distance:25-30M, clear night image

. Wire and smart WiFi connection, easy to set up

.Support TF card, optional

. Support external microphone, 3D Voice Echo cancellation and noise suppression technologies

.Precision Immersion Gold Multilayer PCB board technology, Moistureproof and difficult to oxidize

.Stable high quality white power adaptor

. Easy to install, setting,use and maintain

## 60M Infrared night vision outdoor waterproof IP camera



### Camera advantage:

.Metal housing,outdoor waterproof, outstanding housing craft, wall mounting and ceiling optional,can work at any complex environment in the outdoor

.3MP 2.8-12MM HD Varifocal Len, adjust focal length independently, large-screen display is also legible

.8 pieces high-power Laser LED, distance 45-50M, clear night image

. Wire and smart WiFi connection, easy to set up

.Support TF card, optional











. Support external microphone, 3D Voice Echo cancellation and noise suppression technologies

.Precision Immersion Gold Multilayer PCB board technology, Moistureproof and difficult to oxidize

.Stable high quality white power adaptor

. Easy to install, setting,use and maintain

## Introduction of accessories

				
Remote controller A20	Power adaptor (Standard package) A-30	Network cable A6	USB-RJ45 conversion cable A7	Temperature&Humidity cable A8/ A9
				
Door detector A-10	Door detector A-11	PIR detector A12	Smoke wireless detector A-13	Gas Detector A-14

### Accessories

.Power adaptor: Chip control, overcurrent protection, low voltage protection, highvoltage protection.

Remote controller: One key setting defence.One key delete defence.SOS.Privacy button

.Temperature&Humidity cable:Set up upper and lower limit to temperature&Humidity, when temperature or humidity beyond limits, it will send alarm

### Wireless alarm detectors

.433MHZ Wireless alarm device, compatibility with 1527/2262 wireless code mode and all alarm detectors in security market

. With low voltage alarm push function

.One key to learn alarm sensor code, simpleness and convenience

.Intelligent control, few misinformation

. Microprocessor(MPC)Controller, part of accessories with fault self-checking function



## Camera Software APP



### Highlights:

- .APP smart WIFI to add camera, super experience.
- .APP temperature&humidity alarm push and temperature-limit setting, much stronger alarm push function. (hardware support)
- .APP alarm transport preset function, automatic turn over to the preset location and ring (hardware support)
- .APP wireless alarm device list, user-defined wireless alarm name, electric power display (hardware support)
- .APP image zoom in and zoom out, super experience.
- .APP smartphone video storage and play back, easier video operation.

### Highlights:

- .APP alarm push as TF card is abnormal, stronger alarm push function.
- .APP realtime alarm push and ring, APP one-key defense and one-key cancel defense, easy operation. .
- .APP horizontal and vertical rotate camera by remote control (hardware support)
- .APP video snapshot save and view
- .APP view alarm logs, audible alarm
- .APP sensitivity adjustment function of motion detection
- .APP sensitivity adjustment function of PIR (hardware support)





### Highlights:

- .APP sensitivity adjustment of audible alarm.
- .APP remote access the SD card video and download.
- . APP video snapshot will save in the default phone album in smart phone.
- .APP online update camera and APP new software.
- .PC client software to view, playback, video and alarm push in multi-image.
- .PC computer alarm sensor can support special functions such as it can view alarm image, and private image only can see the blank image.
- .APP and PC software is easy to install and with abundant functions, and the technology is mature and stable.



- 1 Intelligent camera single item and software
- 2 Hierarchical management system of intelligent camera
- 3 Intelligent camera NVR kits





## Hierarchical Management System of Intelligent Camera

Present station in professional surveillance

01

Advantages of civil intelligent camera system project

02

Marketing cooperation cases

04

03

Structures and functions of civil camera intelligent surveillance





## 一、Present station in professional surveillance

1

high  
cost

Back-end needs to tiled display wall and centralized storage, and integrated Management Platform, the most point is that it takes up too much broadband, if you want to ensure smooth image and real time transfer, the thousands surveillance systems have to apply fiber industrial network (FIN), then it can solve the problem in network transmission.

2

troublesome wiring  
installation

Front-end camera and back-end, the computer room all need cable wiring, Video camera, display screen, platform software all need install and debug, all this must be done by a professional technician.

3

poor  
experience

The structure of centralized storage and monitor certain leads network delay and image stuck, even system crash. And professional surveillance is mainly to view and manage by PC computer, it's not ideal both in software experience and the level of image smooth.



## 二、 Advantages of civil intelligent camera system project



distributed architecture, competitive cost, easy

operation, strong stability.  
Compare with professional surveillance, it is more simple, front-end camera supports storage function (Max support 128GB), Middle-end can manage and control miniaturied system by PC CMS software and alarm receiving center. Back-end will master control by server and PC. This structure is competitive in cost, and it is easy in operation, and also have a strong stability.



Easy install

The front-end needs only a network cable or Wifi, plug in then finish installation, it can save you lots of troule in wiring installation. The back-end installation only needs to build up a server and a PC computer, it is efficient.



super experience

terminal clients can operate, manage and view camera via app, all the PC software functions can reach in the smart phone app. APP support image zoom out, smart WIFI, defense and cancel defense, alarm push and video etc. The opration is something like wechat, QQ, you don't need to know to much technology.





## Part 3: Civil Intelligent Camera Surveillance System Type

1

Civil hierarchical  
chain management  
Intelligent  
monitoring system

Based on the  
backend server  
management platform  
+CMS management  
software

2

Civil alarm center  
Intelligent monitoring  
system

Based on the backend  
server  
management platform  
+Alarm center platform



## 1. Civil hierarchical chain management intelligent surveillance system

(1)、Based on the backend server management platform+CMS

The system is mainly used in chains, head office and branch control, total control centers and sub-centers, such as sports lottery management, administration and other chain restaurants.



System Structure

# 1. Civil hierarchical chain management intelligent surveillance system

## (2)、Functions

A、Achieve the hierarchical management, is currently the largest five accounts before permission.

### 区域分级管理项目演示平台

演示平台

[分级管理](#)
[系统设置](#)
[安全退出](#)
[演示平台](#)
[目录1](#)
[目录2](#)
[目录3](#)
[目录4](#)
[目录5](#)

 当前分组：[演示平台](#) [添加子分组](#) [修改分组](#)  

 关键字： 

 符合条件的记录共 2 条, 1 页, 每页 12 条。转到： 

1	设备ID	备注	状态	操作
	1051761	走廊	启用	<input type="button" value="详情"/> <input type="button" value="修改"/> <input type="button" value="禁用"/> <input type="button" value="删除"/>
	1068970	y970	启用	<input type="button" value="详情"/> <input type="button" value="修改"/> <input type="button" value="禁用"/> <input type="button" value="删除"/>





## 1. Civil hierarchical chain management intelligent surveillance system

### (2)、Functions

B、Achieve unified management, including unified add cameras, unified set of CMS login user name and password on each grade PC platform. Add unlimited number of cameras.

The screenshot displays the SOPOODA surveillance system interface. At the top, there are three main navigation tabs: **分级管理** (Hierarchical Management), **系统设置** (System Settings), and **安全退出** (Safe Exit). The **分级管理** tab is active, showing a tree structure under **演示平台** (Demo Platform) with sub-items **目录1** through **目录5**. A search bar for **关键字** (Keywords) is present, along with buttons for **添加子分组** (Add Subgroup), **修改分组** (Modify Group), **添加设备** (Add Device), and **批量添加** (Batch Add).

Two modal windows are overlaid on the interface:

- Group Management Modal:** A light blue box with input fields for **组名** (Group Name) and **密码** (Password), and buttons for **添加** (Add) and **取消** (Cancel).
- Device Management Modal:** A larger light blue box with input fields for **设备号** (Device ID), **密码** (Password), **设备名** (Device Name), **客户编号** (Customer ID), **地址** (Address), **第一联系人** (First Contact), **电话** (Phone), **第二联系人** (Second Contact), **电话** (Phone), and **备注** (Remarks). It also has **添加** (Add) and **取消** (Cancel) buttons.

In the background, a table shows a list of devices with columns for **设备ID** (Device ID) and **状态** (Status). The first row shows **1051761** and **启用** (Enabled). Below the table, there are buttons for **详情** (Details), **修改** (Modify), **禁用** (Disable), and **删除** (Delete).



## 1. Civil hierarchical chain management intelligent surveillance system

### (2)、Function

C、CMS to achieve the real-time monitoring, 64 cameras can be monitored simultaneously, to manage of camera recording, playback and alarm records, the real time video view controls, video picture alarm push notification when an alarm occurs. And displays the first contact, second contact, address, telephone and other information and etc.



## 1. Civil hierarchical chain management intelligent surveillance system

### (2)、Function

D、Front-end camera configuration: Camera 1set, wireless door sensor 1 set, privacy protection remote controller 1pc to consist one small smart home camera system, for back-end management and control is very convenient.

E、APP Mobile phone software: Dedicated to end-customers, completely replace the PC software, simple, convenient, strong sense of experience.





## 1、Civilian classification chain management intelligent Monitoring System

### (3)、The case

XX Province Sports Lottery Management Center is plan to manage the thousands of lottery betting station, by using the network

technology, it is possible for the center to see the operation of all the lottery betting station in real time .

Requirements are as belows;

A、 More than 10,000 sets IP Cameras

B、 a patrol officials manages 100 lottery betting, and each patrol officials have one PC computer, you can always check the 100 betting stations situation, and can only view this 100 betting cameras.

C、 in order to save the costs, each betting install their own camera, alarm door sensor, alarm sensors, each Betting's security monitoring was managed by the betting station themself, such as arm and disarm the alarm settings

and other disposal night.

D、 province and city level Lottery betting Management Center can install the CMS management software platform, you can view of every lottery betting live pictures.

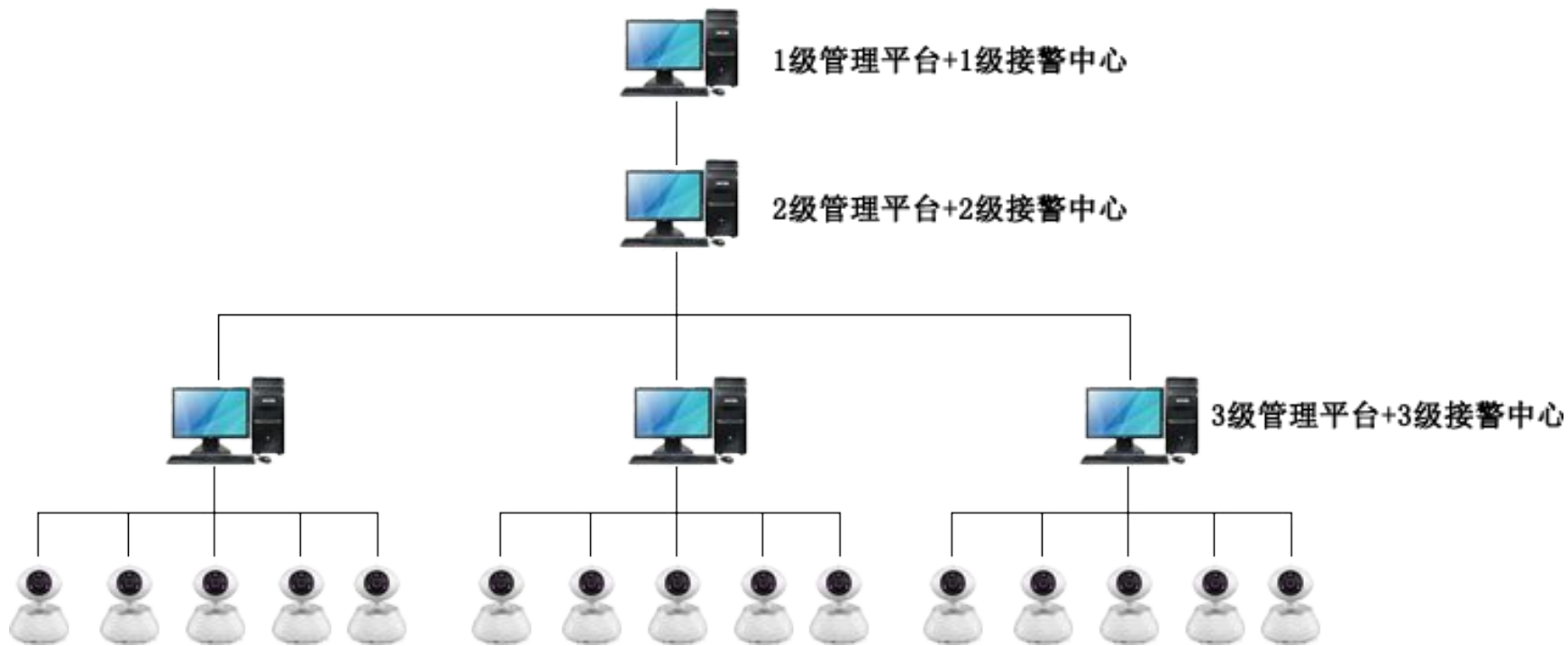
E、 the server of the entire system needs to be laid in Province Sports Lottery Management Center, all devices managed by the server

Add add the cameras, sub-rights and group management, you can start the camera, you can stop the camera working, manage the Camera 's owner information, such as contact information, emergency contact information and etc.

## 2、 Civil alarm center intelligent monitoring system

(1)、 based on the back-end server management platform + Alarm Center platform

This system is mainly to replace the traditional alarm systems, the traditional alarm systems due to the use of traditional analog control architecture cause the False positive rate, can not see live video, very high chance that Once police intelligence tappeared, can not run to the site in time , and deal with the Awkward issues. The system is mainly applied in residential, office, retail, and for monitoring and Alarm management.



System structure

## 2. Civil alarm center intelligent monitoring system

### (2)、Function

A, background server management platform realized the hierarchical management, currently up to 5 grade.

## 区域分级管理项目演示平台

演示平台

分级管理

系统设置

安全退出

演示平台

目录1

目录2

目录3

目录4

目录5

当前分组: 演示平台 [添加子分组](#) [修改分组](#)  关键字:  符合条件的记录共 2 条, 1 页, 每页 12 条。转到:  

设备ID	备注	状态	操作
1051761	走廊	启用	<input type="button" value="详情"/> <input type="button" value="修改"/> <input type="button" value="禁用"/> <input type="button" value="删除"/>
1068970	y970	启用	<input type="button" value="详情"/> <input type="button" value="修改"/> <input type="button" value="禁用"/> <input type="button" value="删除"/>





## 2. Civil alarm center intelligent monitoring system

### (2)、The function

B、background server management platform realized the unified management, including to add cameras, to set every PC alarm Center's login user name and password. No limitation on the number of cameras.



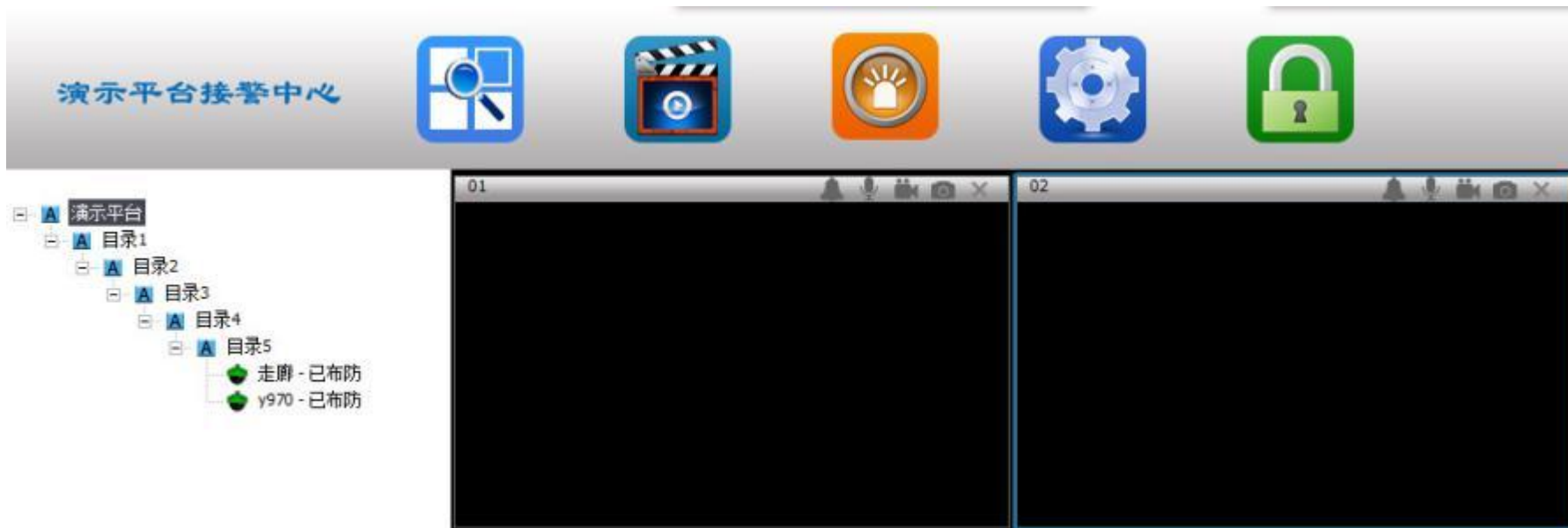
The screenshot displays the 'System Settings' (系统设置) section of the SOPOODA management platform. The interface includes a navigation menu on the left with '演示平台' (Demo Platform) and a tree structure of '目录1' through '目录5'. The main content area shows '当前分组: 演示平台' (Current Group: Demo Platform) and options to '添加子分组' (Add Subgroup), '修改分组' (Modify Group), '添加设备' (Add Device), and '批量添加' (Batch Add). A search field for '关键字' (Keywords) is present, along with a '符合条件的记录' (Records meeting conditions) section showing a table with columns for '设备ID' (Device ID) and '状态' (Status). A modal window is open for adding a device, containing fields for '设备号' (Device No.), '密码' (Password), '设备名' (Device Name), '客户编号' (Customer No.), '地址' (Address), '第一联系人' (First Contact), '电话' (Phone), '第二联系人' (Second Contact), '电话' (Phone), and '备注' (Remarks). Buttons for '添加' (Add) and '取消' (Cancel) are at the bottom of the modal. Another smaller modal is visible in the bottom left for adding a group, with fields for '组名' (Group Name) and '密码' (Password), and '添加' (Add) and '取消' (Cancel) buttons.



## 2、 Civil alarm center intelligent monitoring system

### (2)、 Function

C、 PC Alarm Center 's factory default does not display real-time images, only when alarm appeared, pops up alarm screen , can Simultaneously pop 20 screens, which allows the lowest 2 level to display screen, after pop-up screen, you can achieve record such as alarm records and show the first contact, the second contact, address, telephone and other information.



## 2.Civil alarm center intelligent monitoring system

### (2)、Function

D、 The front camera configuration: Camera 1pc, wireless door sensor 1 pair ,privacy mask remoter 1pc,  
A small smart home camera system, back-end management, very convenient control .

E、 APP software: Dedicated to the end customers, completely replace the PC, the function is simple,  
Convenient, and have strong sense of experience



## 2、 Civil alarm center intelligent monitoring system

### (3)、 The Case

Changsha alarm center management system, by using the network technology, capable of receiving and processing each streets's alarm and requirements are as follows;

A、 More than 5000 points front camera .

B、 Changsha City is divided to districts, street, small residential district, building, a total of five. A residential property Manages all residents in the district, one security guard manages one building, a street office manages all the residential district, once the alarms appears,the building security alarm center, the residential management center must pop up the alarm screen, timely deal with the alarms, the other levels pop-up alarm menu, to save bandwidth will not display the image screen

- 1** Intelligent IP Camera & Software
- 2** Intelligent IP Camera Grading Management System
- 3** Intelligent IP Camera NVR Kit







## Intelligent IP Camera NVR Kit-Wifi Kit Series



### Wifi Kit:

Connect the camera with DC 12V power supply and get wifi through the router, connect the nvr with router by network cable. It is a simple operate kit for home use.

### The Kit Package Consists Of

- 1pc of 720P NVR With PCE function
- 4pcs of Outdoor Waterproof IP Camera
- 1pc of RJ45 network cable with 1.5meter Length.
- 1pc of 15V Power Supply For NVR
- 1pc of mouse for NVR
- 1pc of disk and manual instruction



PS: The way for IP Camera get wifi just like our mobile do, no need cable, and NVR connect router by one cable only





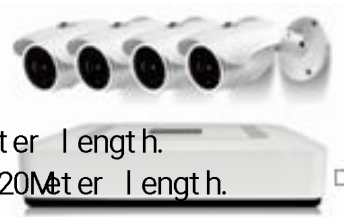
### POE Kit:

Connect the camera to NVR by cable to realise plug and play suitable for home and shops.

PS: just like our telephone, insert the telephoneline to start communication with easy and safe operation

### This POE Kit Package Consists Of

- 1pc of 720P NVR With POE Function.
- 4pcs of Outdoor Waterproof IP Camera
- 1pc of RJ45 network cable with 1.5 Meter Length.
- 4 bunches of RJ45 network cable with 20Meter Length.
- 1pc of 15V Power Supply For NVR
- 1pc of mouse for NVR
- 1pc of disk and manual instruction





**The Second  
Technical  
Innovation  
With Support**





Camnoopy offer standard **SDK and Api** interface to the partners who owns the javascript such as APP, PC, WEB for video application.



Android & iOS Development



PC Development





## Camera & APP OEM Procedure

### 一、Camera OEM Procedure

No.	OEM Items	MOQ	Remark
1	Print Logo on Camera	100pcs	
2	OEM package, manual instruction and lable	500pcs	
3	Color	500pcs	Black, Red, Yellow, Blue Colors For Option
4	Hardware features Addition or Reduce	1000pcs	Such as add 3G/4G, wired alarm, clock, infra remote control, wireless alarm etc.
5	...	...	

No.	OEM Items	MOQ	Remark
1	OEM Item	100pcs	
2	Add voice for defence setting and delete	100pcs	
3	exchange the alarm buzz	500pcs	
4	Change logo on APP	500pcs	
5	Upload APP to Iphone APP Store and google play	500pcs	Client offer content
6	Change language in APP	500pcs	
7	Change the cutis, interface style	500pcs	
8	Add more function in APP	500pcs	Do what client request

## Camera & APP OEM

### Procedure

#### 三、 Javascript & Recieving Alarm Center APP OEM Procedure

No.	OEM Items	MOQ	Remark
1	Change LOGO in CMS Javascript	500pcs	
2	Change LOGO in Alarm receiving center	500pcs	
3	Change CMS Interface	500pcs	
4	Change alarm receiving center style	1000pcs	Do what client request
5	Develop the CMS according to client demand	1000pcs	
6	Develop the alarm receiving center according to client demand	1000pcs	Do what client request

No.	OEM Items	MOQ	Remark
1	Manage Servor Building	1000pcs	P2P Servor & Protocol not public
2	Manage backstage software install & adjust	1000pcs	
3	Change LOGO and interface in backstage software	1000pcs	
4	Develop the manage backstage software by client demand	1000pcs	Do what client request

## Camera & APP OEM

### Procedure

#### 三、 Javascript & Recieving Alarm Center APP OEM Procedure

No.	OEM Items	MOQ	Remark
1	Change LOGO in CMS Javascript	500pcs	
2	Change LOGO in Alarm receiving center	500pcs	
3	Change CMS Interface	500pcs	
4	Change alarm receiving center style	1000pcs	Do what client request
5	Develop the CMS according to client demand	1000pcs	
6	Develop the alarm receiving center according to client demand	1000pcs	Do what client request

No.	OEM Items	MOQ	Remark
1	Manage Servor Building	1000pcs	P2P Servor & Protocol not public
2	Manage backstage software install & adjust	1000pcs	
3	Change LOGO and interface in backstage software	1000pcs	
4	Develop the manage backstage software by client demand	1000pcs	Do what client request

