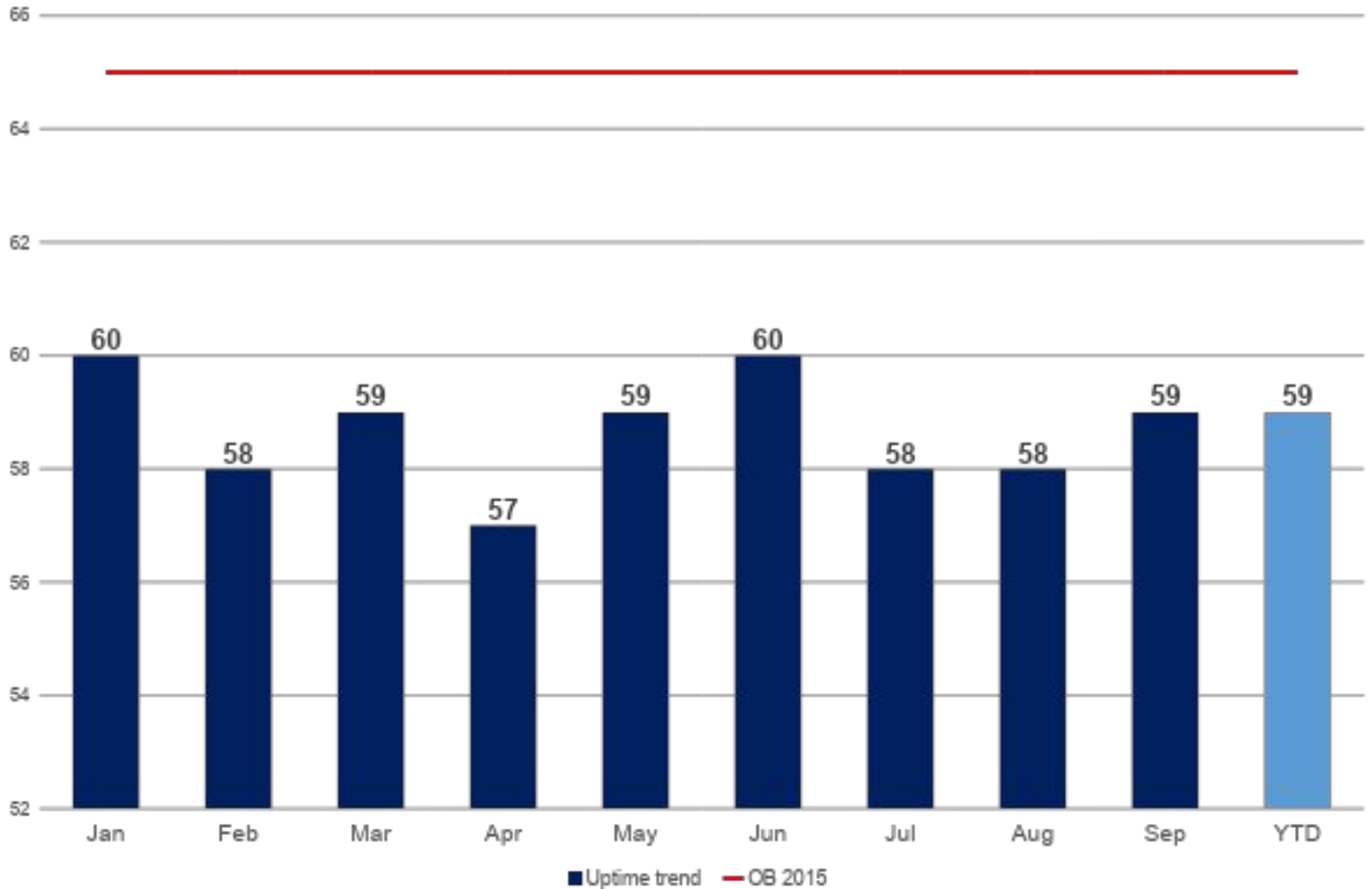
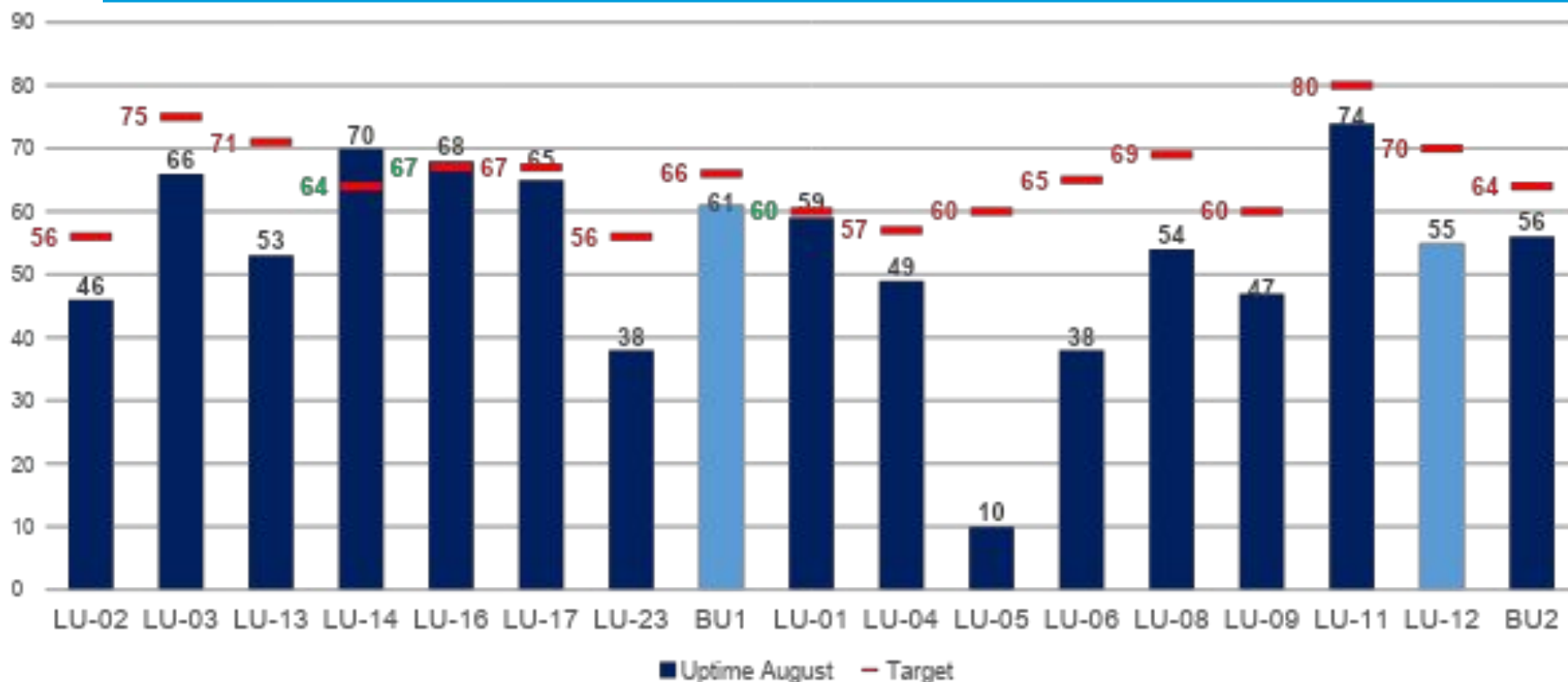


# Actual vs. Planned Uptime, %

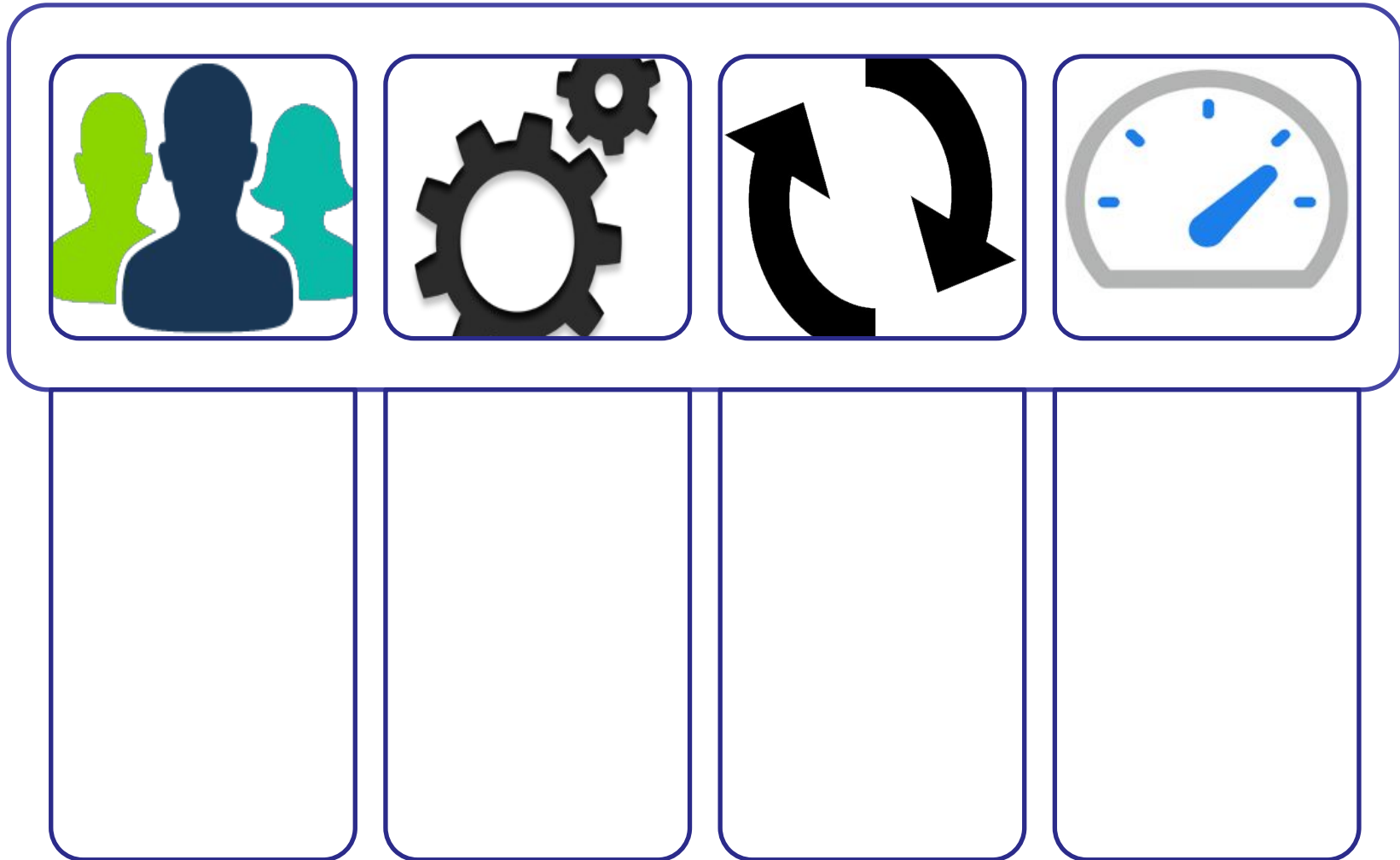


# Performance by Link-Up

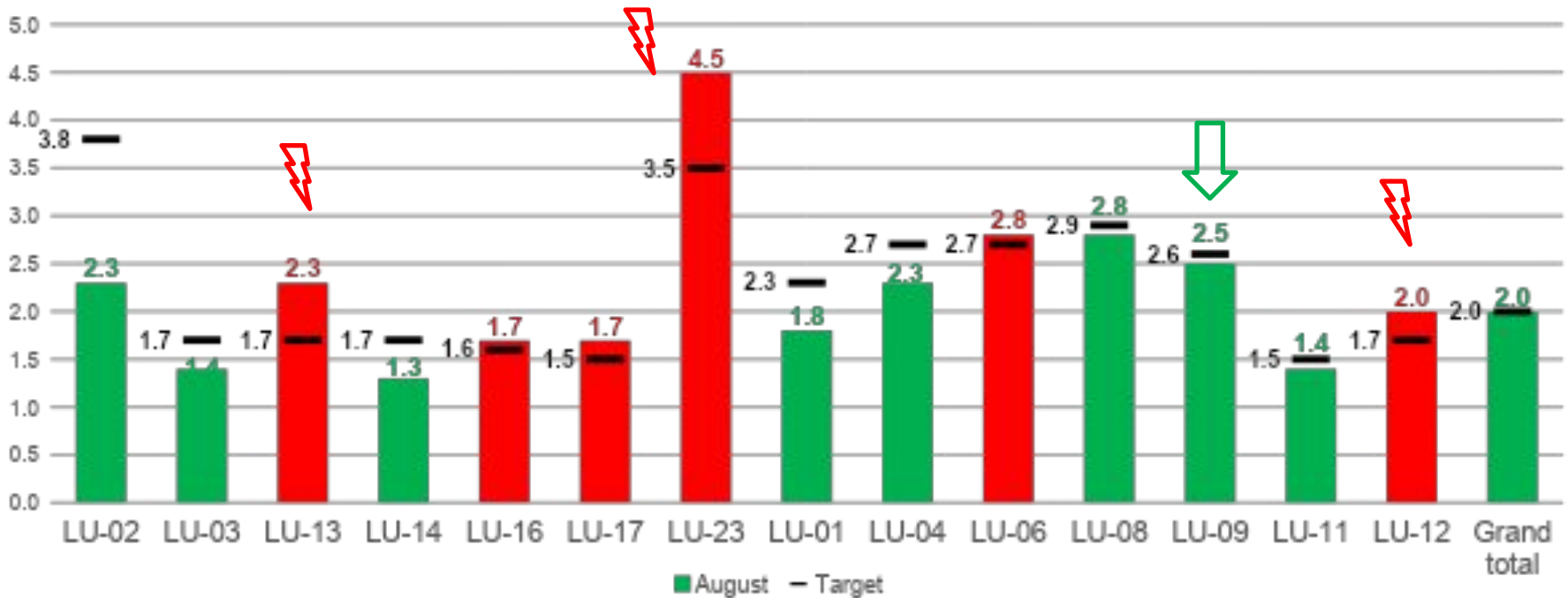


- LU 05 (Start Up after long shut down) 0.20%
- LU 13 (LADO and pack tracking installation) 0.25%
- New PRIFs installation on 5 LUs 0.30%
- Parliament in new design (issues with tipping paper) 0.50%
- LU 09 Start Up 0.95%
- Breakdowns (X3 on LU 02 and several small on other machines) 0.50%
- System for Laser dedusting on 4 LUs (installation, adjustments and switch OFF) 0.50%
- Reduced Speed operation (2 prototypes, 7 inserts, 30 Product Releases, 2 certifications, HL for Bond Silver, etc.) 0.80%

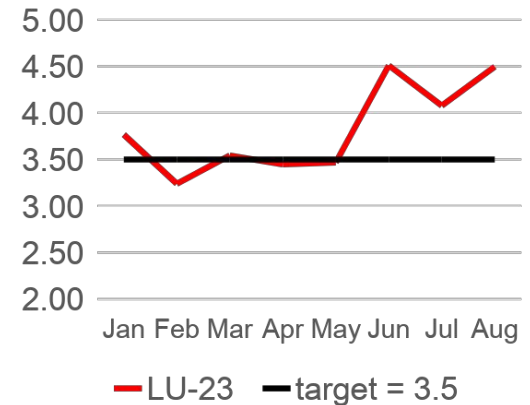
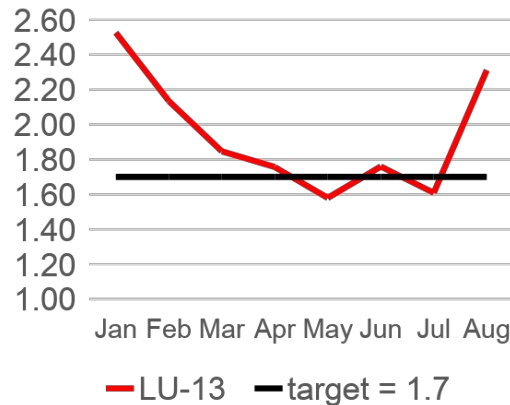
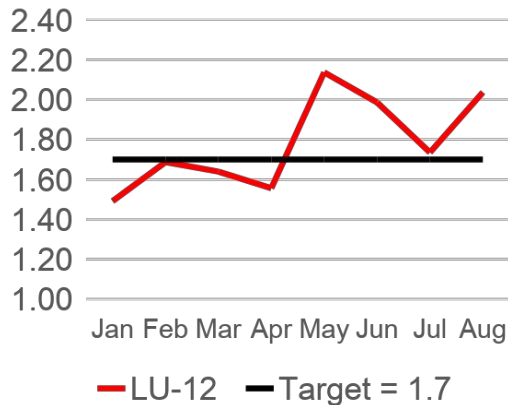
## Japanese Production with inserts and registered polypropylene



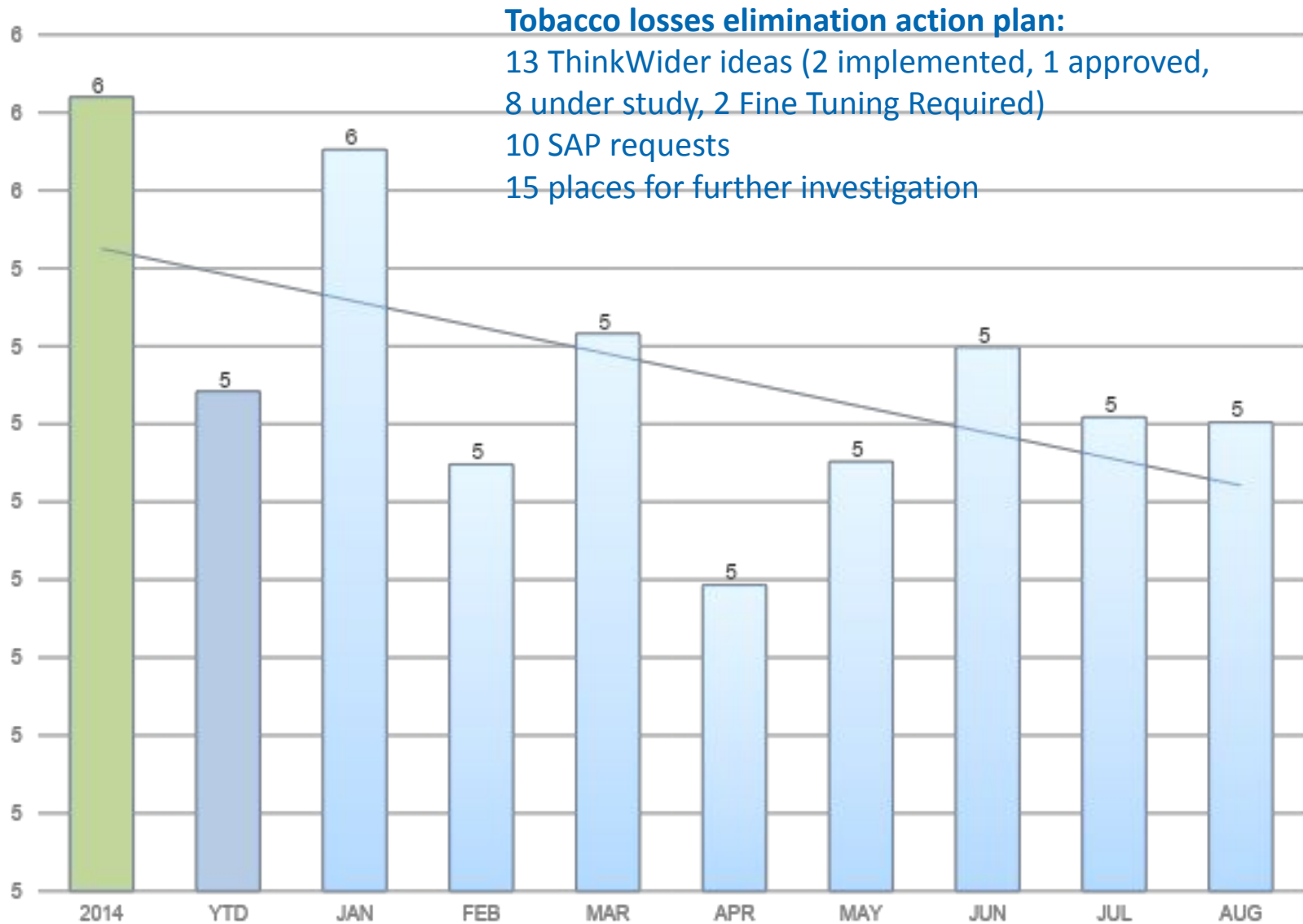
# Reject Rate



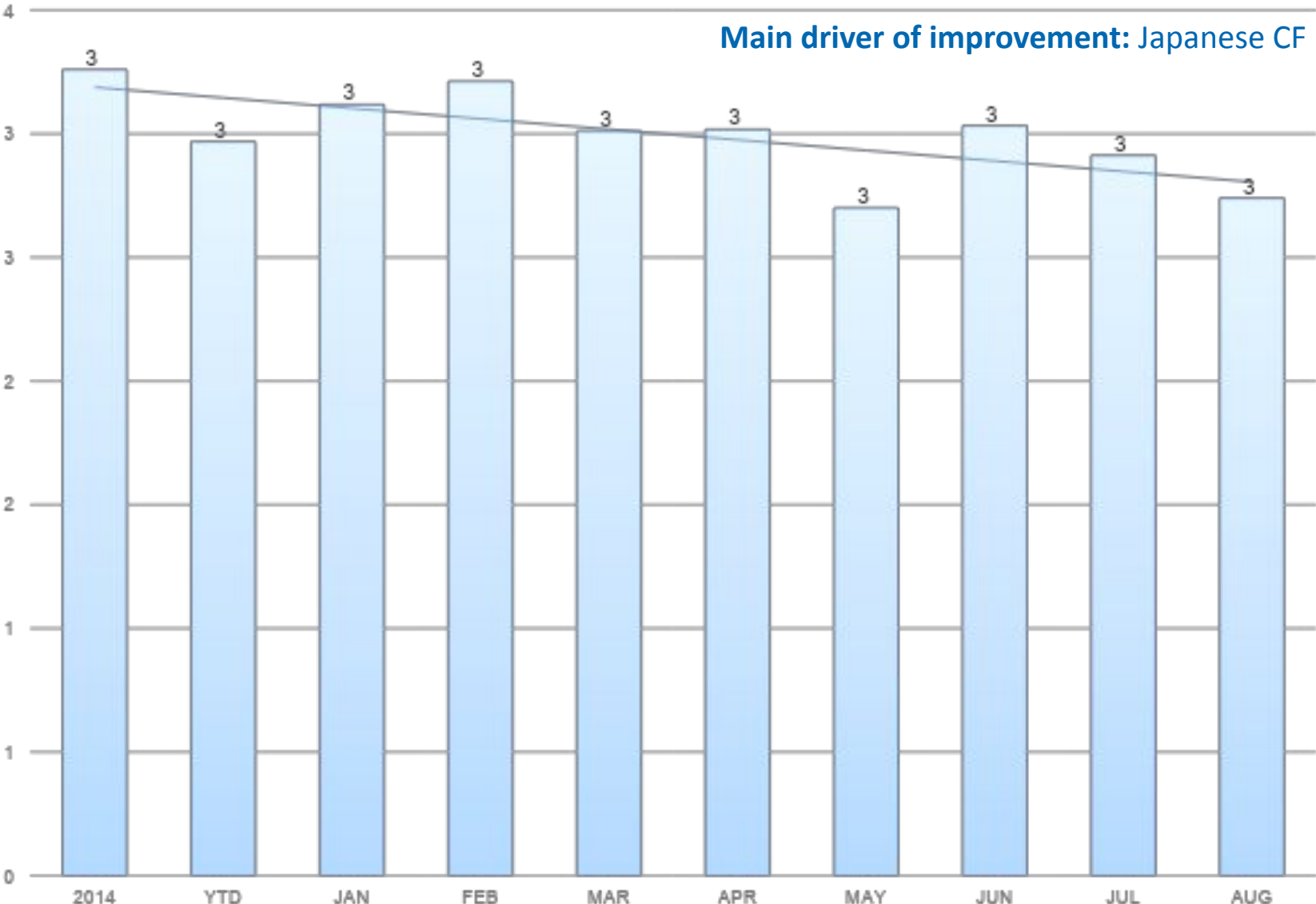
## YTD trend for worst LUs



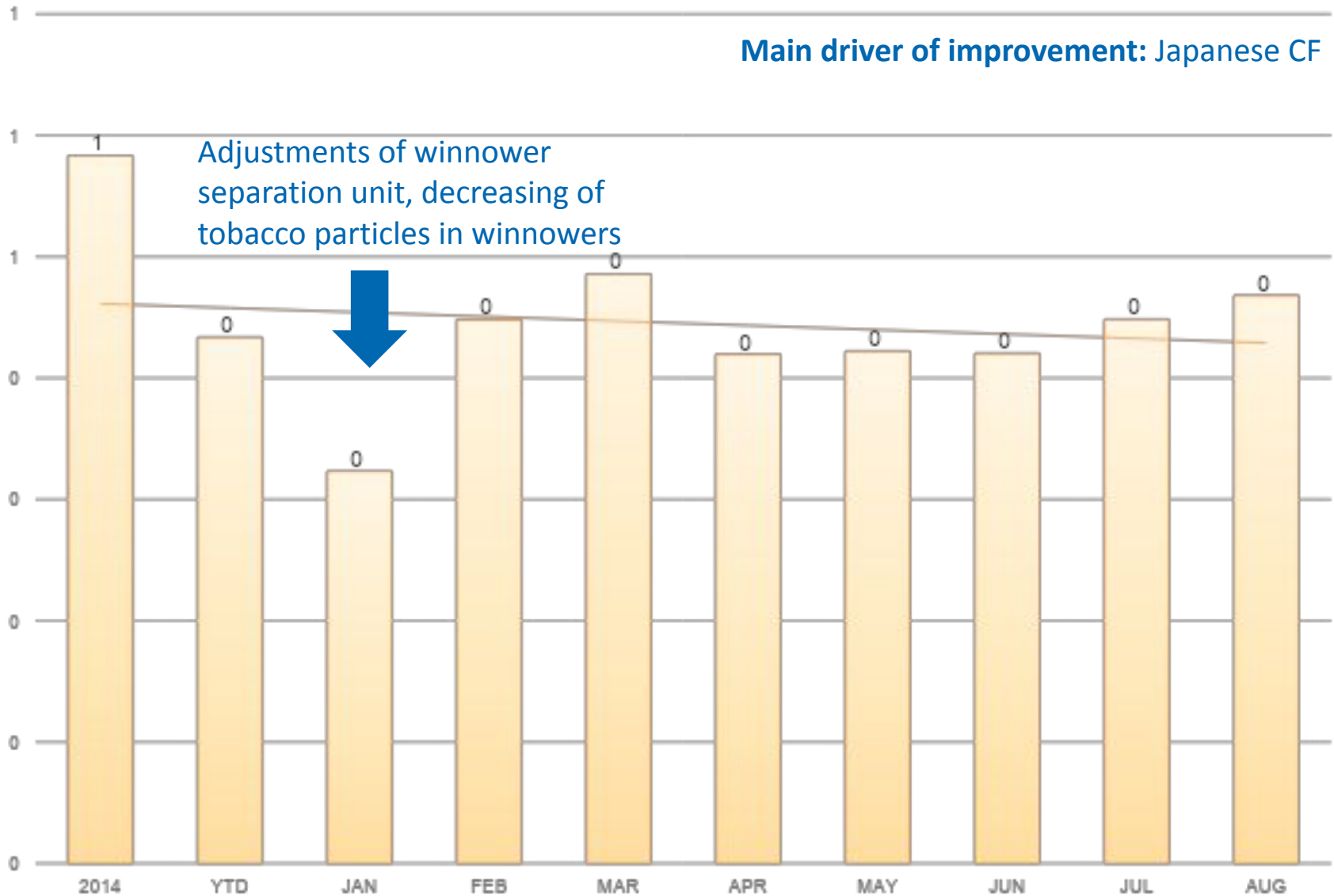
# Tobacco Waste



# Dust



# Winnowers



## Circumference improvement action plan

