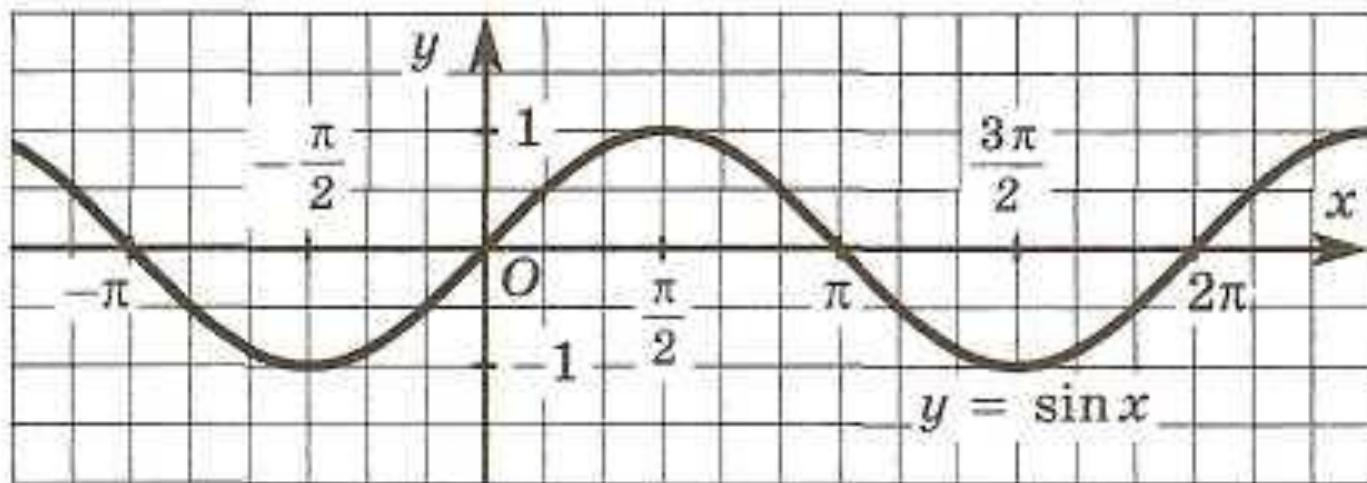


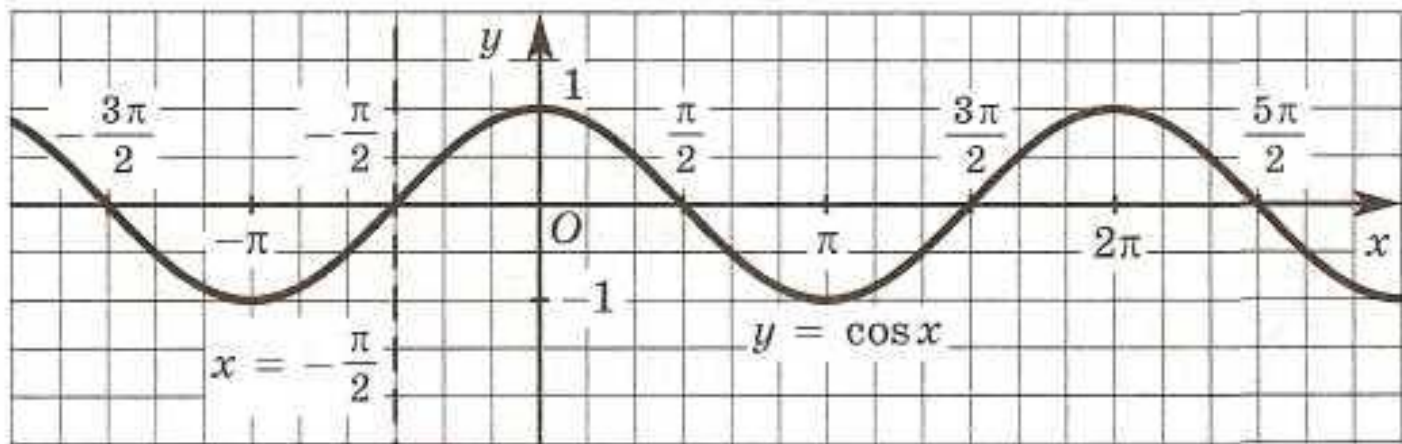
Тригонометрические функции



Функция $y = \sin x$

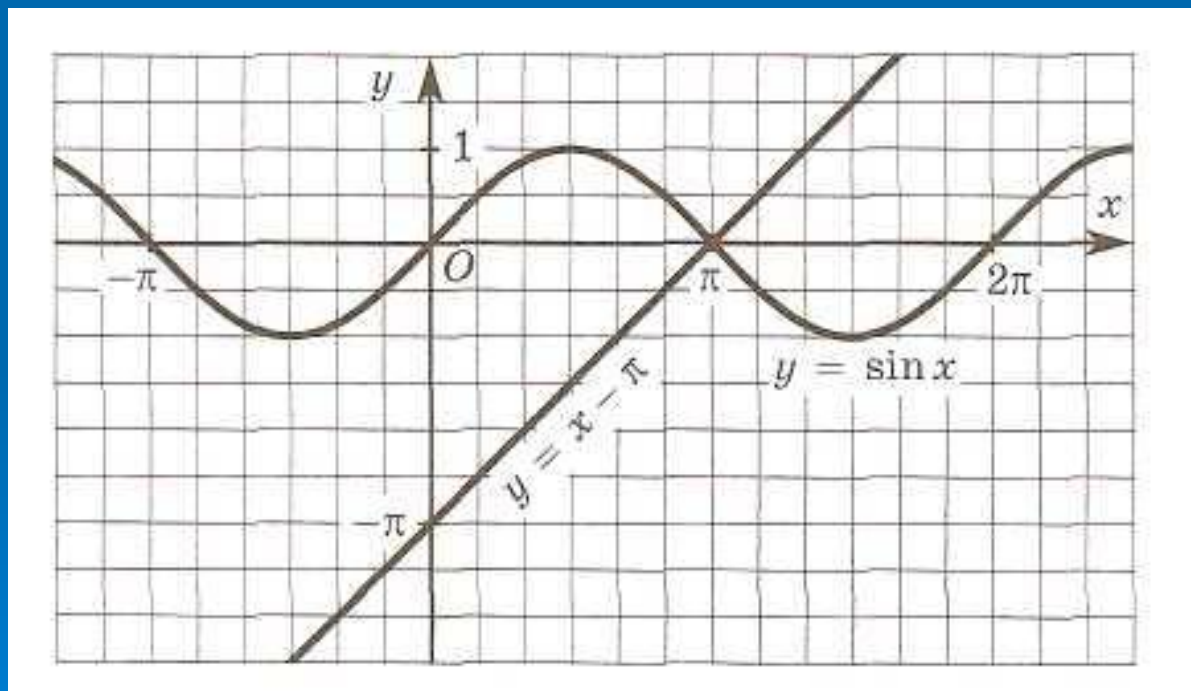


Функция $y = \cos x$



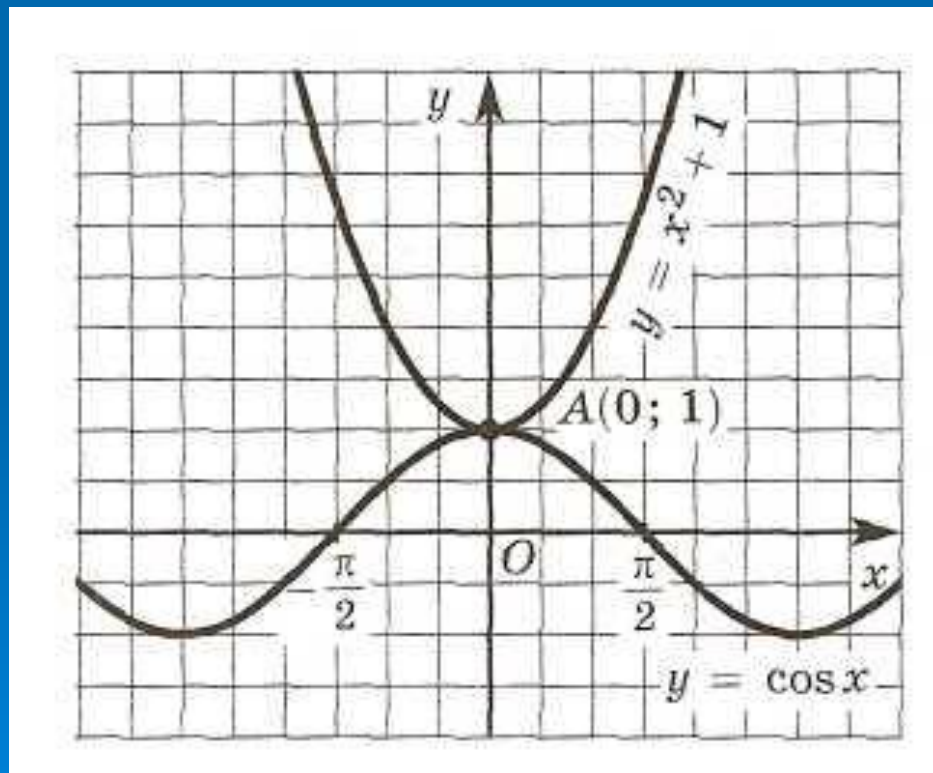
Решить уравнение

$$\sin x = x - \pi$$



Решить уравнение

$$\cos x = x^2 + 1$$



Построение графика функции

$$y = \operatorname{tg}x \text{ на } \left[0; \frac{\pi}{2}\right)$$

x	0	$\frac{\pi}{6}$	$\frac{\pi}{4}$	$\frac{\pi}{3}$
$\operatorname{tg}x$	0	$\frac{\sqrt{3}}{3}$	1	$\sqrt{3}$

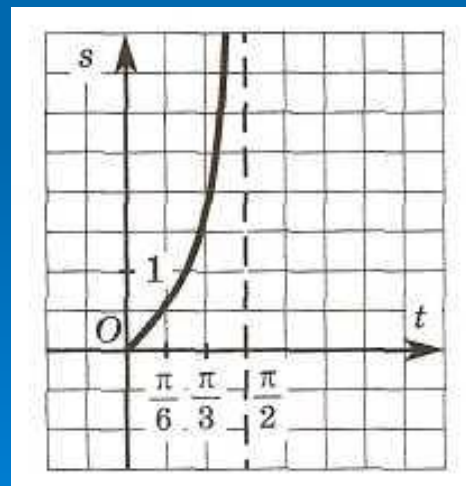
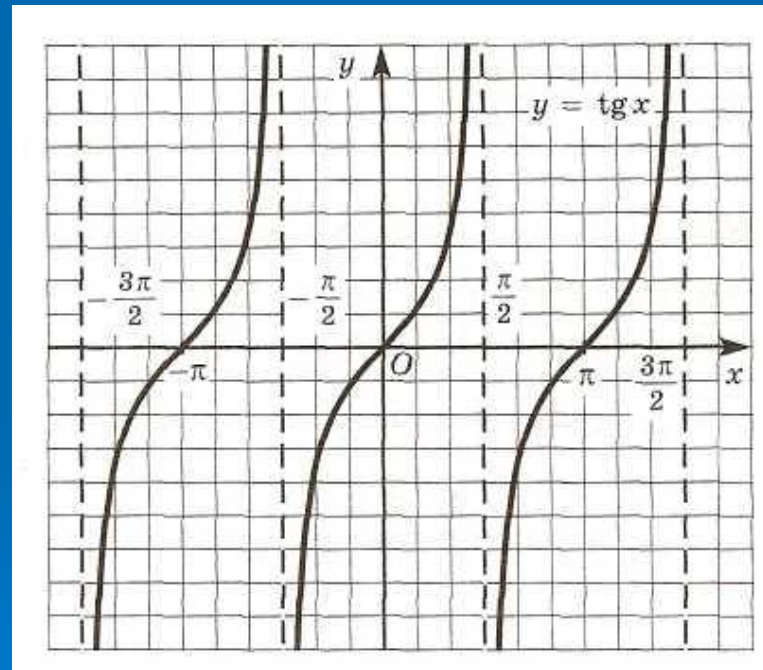
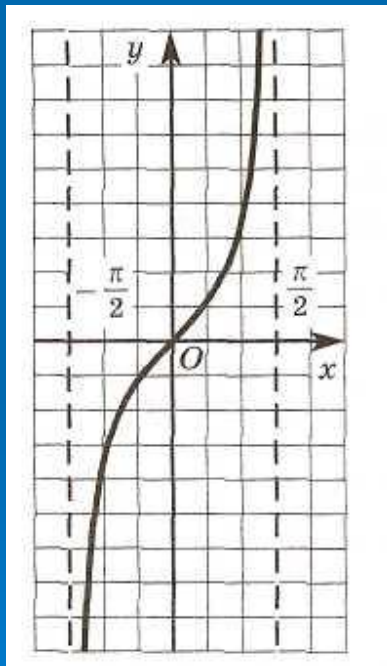


График функции $y = \operatorname{tg} x$



Построение графика $y = \operatorname{ctg} x$

$$\operatorname{ctg} x = -\operatorname{tg}\left(x + \frac{\pi}{2}\right)$$

