

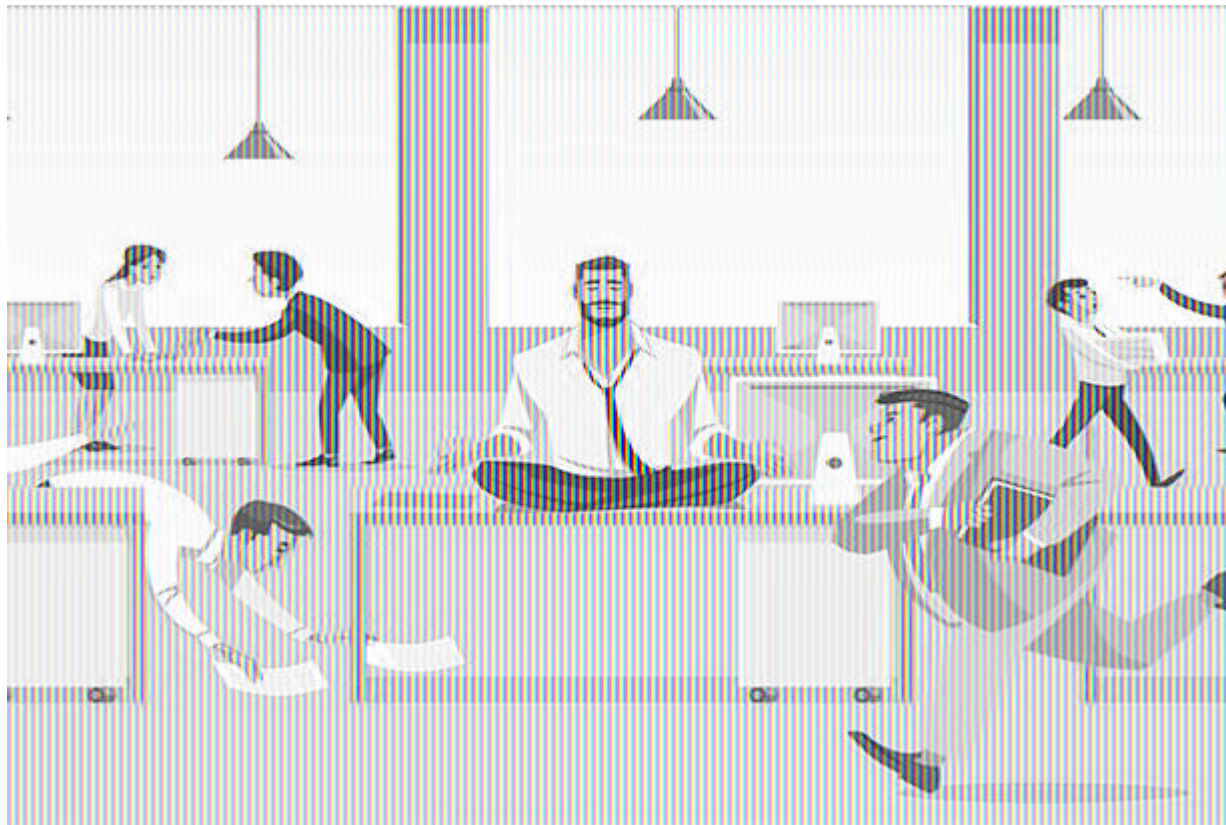
# ICT IN THE WORK PLACE



- ❑ **The use of computers and technology today has become fundamental to the operation of organizations and society.**
- ❑ **Today, our life cannot be imagined without the use of the Internet.**



- ❑ **ICTs are now used in many areas. For example, in hospitals, in shops, schools, offices and much more**



- Nowadays, it's hard to find a workplace without any ICT equipments. The use of computers and internet are one of the most obvious example. Computers make the process of working faster and easier, while the use of internet is critical, as it is source of informations. In addition, the use of email and instant messaging is also important as communication tools.

# *Effect of ICT On Employment*

- The impact of ICT has been good and bad on employment within the workplace. It has resulted in the creation of new jobs as well as reduction of old. New staff members are often required to perform tasks such as monitoring the ICT system, providing assistance, programming and managing data, resulting in an increase in the job market.



# *ICT and Workplace Stress*

- Stress regarding the need to adapt to computer systems today is a major problem in the workplace. Stress has been around long before the introduction of ICT, however, a new type of stress has arrived since the advent of computers.

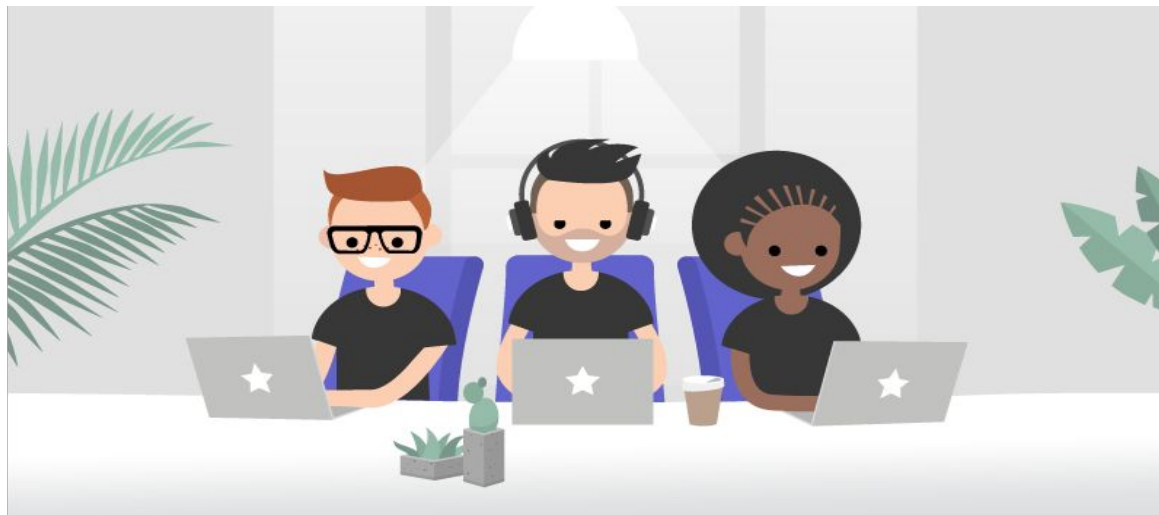


- Issues such as not understanding how the computer works, system crashes, information overload and the complication of computer jargon can cause real stress for the employee. The British Association of Anger Management states, "50% of Britons have reacted to problems with their computer by either abusing colleagues, hitting the computer, screaming, shouting or hurling parts of the PC"



# Telecommuting

- Telecommuting or teleworking can be simply described as working at home while communicating with the office by ICT technologies such as phone, fax, email, or even instant messenger. Telecommuting is becoming more popular nowadays due to the rapid advance of ICT application.





# ICT in a Workplace

- **Advantages:**

- You can email all the people who work there if you need to send a message out
- Fast communication method
- A good way of keeping track of what you are spending and what you are earning

- **Disadvantages:**

- You might get a virus on your computer which would mean you are unable to open your emails
- A risk that your computer could break down any time of the day

# THE END

