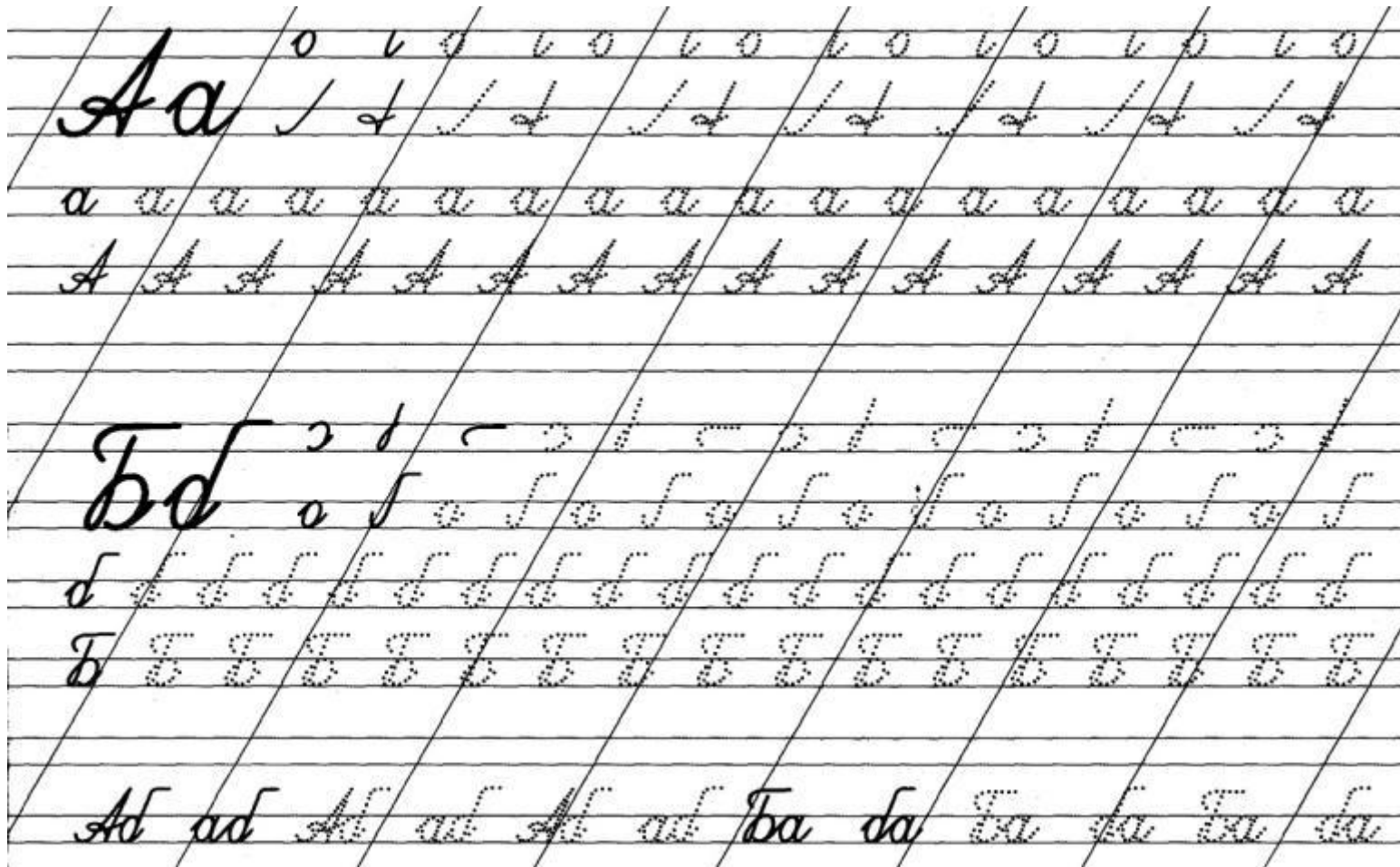


Учимся писать буквы



B - Г

B 1 3 1 1 1 3 1 3 1 3 1 3

Г 1

Tab Tab Tab Tab Tab Bar Bar Bar Bar Bar

Д - Е

The image shows a handwriting practice sheet for the Cyrillic letters Д, д, Е, е. It is organized into three main sections, each on a set of four horizontal lines with a diagonal guide line.

Section 1: Letter Д, д
- **Stroke order:** Shows the starting point (0) and direction (1) for writing uppercase Д and lowercase д.
- **Tracing:** Multiple rows of the letters Д and д for tracing practice.

Section 2: Letter Е, е
- **Stroke order:** Shows the starting point (0) and direction (1) for writing uppercase Е and lowercase е.
- **Tracing:** Multiple rows of the letters Е and е for tracing practice.

Section 3: Word tracing
- **Words:** The words "Дед" (Grandfather) and "Еда" (Food) are written in a cursive style.
- **Tracing:** Multiple rows of the words "Дед" and "Еда" for tracing practice.

Ё - Ж

Ё

1 2 1 2 1 2 1 2 1 2 1 2 1 2 1 2

Ё

ё

Ж

1 2 1 2 1 2 1 2 1 2 1 2 1 2 1 2

Ж

Ёё Ёё Ёё Ёё Ёё Ёё Ёё Ёё Ёё Ёё Ёё Ёё Ёё

З - И

Handwriting practice for the Cyrillic letter 'З' (Z).

Row 1: Shows the stroke order for writing 'З'. The first stroke is a vertical line down, and the second stroke is a diagonal line from the top right to the bottom left. This sequence is repeated across the row.

Row 2: Shows the letter 'З' written on a set of four horizontal lines. The letter is positioned between the second and third lines from the top. This is repeated 15 times.

Row 3: Shows the letter 'з' written on a set of four horizontal lines. The letter is positioned between the second and third lines from the top. This is repeated 15 times.

Row 4: Shows the letter 'з' written on a set of four horizontal lines. The letter is positioned between the second and third lines from the top. This is repeated 15 times.

Row 5: Shows the stroke order for writing 'И'. The first stroke is a vertical line down, and the second stroke is a diagonal line from the top left to the bottom right. This sequence is repeated across the row.

Row 6: Shows the letter 'И' written on a set of four horizontal lines. The letter is positioned between the second and third lines from the top. This is repeated 15 times.

Row 7: Shows the letter 'и' written on a set of four horizontal lines. The letter is positioned between the second and third lines from the top. This is repeated 15 times.

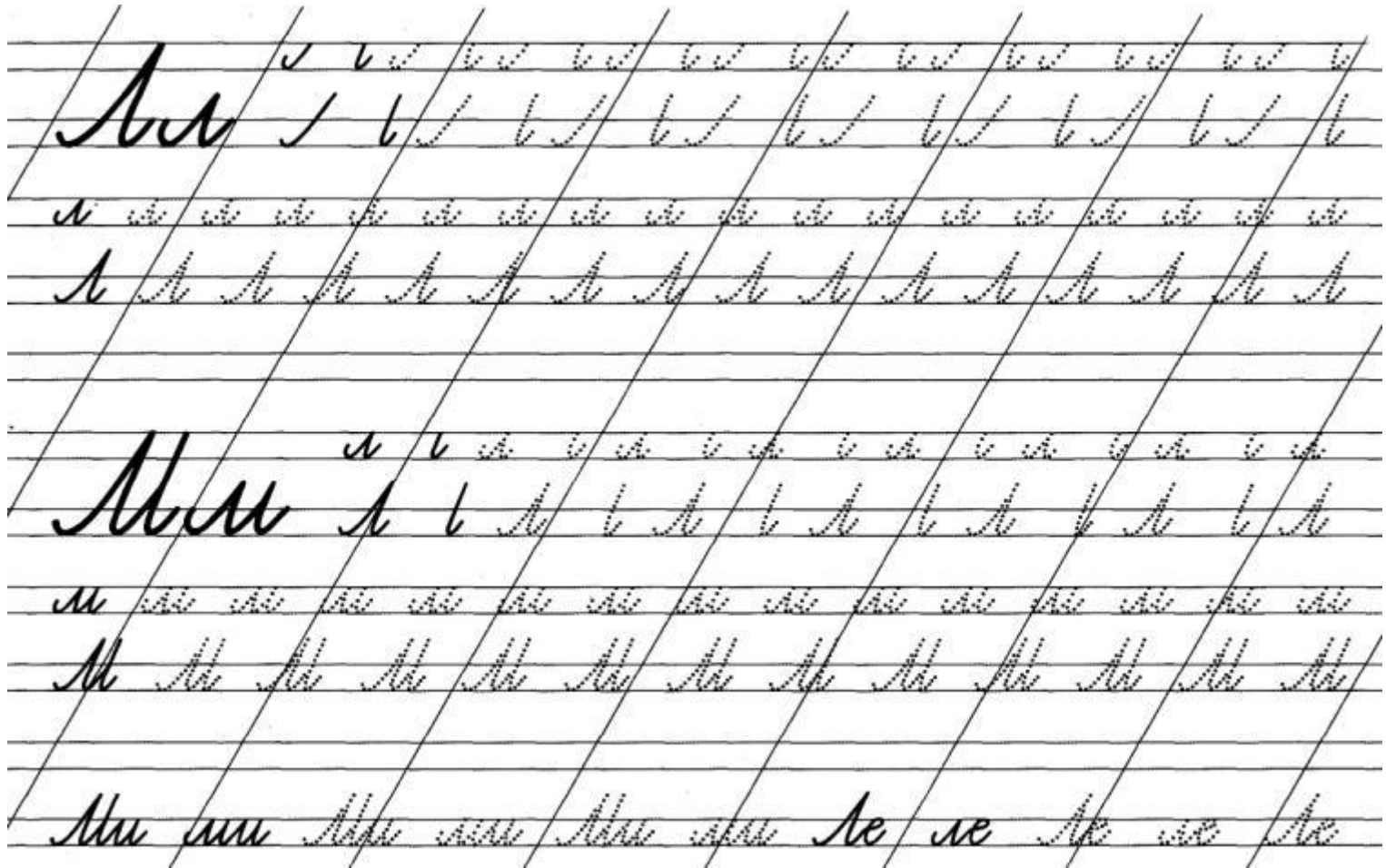
Row 8: Shows the letter 'И' written on a set of four horizontal lines. The letter is positioned between the second and third lines from the top. This is repeated 15 times.

Row 9: Shows the letter 'и' written on a set of four horizontal lines. The letter is positioned between the second and third lines from the top. This is repeated 15 times.

Row 10: Shows the letter 'И' written on a set of four horizontal lines. The letter is positioned between the second and third lines from the top. This is repeated 15 times.

Row 11: Shows the letter 'и' written on a set of four horizontal lines. The letter is positioned between the second and third lines from the top. This is repeated 15 times.

Л - М



H - O

Handwriting practice for the Cyrillic letter 'H' (He) and 'O' (O) on a four-line grid. The practice is divided into three sections:

- Section 1: Letter 'H' (He)**
 - Row 1: Shows the stroke order for writing 'H'. The first 'H' is solid with stroke numbers: 1 for the vertical line, 2 for the top bar, and 3 for the bottom bar. Subsequent 'H's are dashed for tracing.
 - Row 2: A row of 16 dashed 'H's for tracing.
 - Row 3: A row of 16 dashed 'H's for tracing.
- Section 2: Letter 'O' (O)**
 - Row 4: Shows the stroke order for writing 'O'. The first 'O' is solid with stroke number 0. Subsequent 'O's are dashed for tracing.
 - Row 5: A row of 16 dashed 'O's for tracing.
 - Row 6: A row of 16 dashed 'O's for tracing.
- Section 3: Word 'она' (ona)**
 - Row 7: Shows the word 'она' written in cursive. The first 'она' is solid, and the following four are dashed for tracing. The word is repeated twice more: 'на' and 'на'.

П - Р

Handwriting practice for the Cyrillic letters П and Р. The page is divided into two main sections by a horizontal line.

Section 1: Letter П (P)

- Row 1: Large cursive letter П followed by a series of smaller П characters for tracing, each with a number 1 above it.
- Row 2: A row of 15 dotted П characters for tracing.
- Row 3: A row of 15 dotted П characters for tracing.
- Row 4: A row of 15 dotted П characters for tracing.

Section 2: Letter Р (R)

- Row 1: Large cursive letter Р followed by a series of smaller Р characters for tracing, each with a number 1 above it.
- Row 2: A row of 15 dotted Р characters for tracing.
- Row 3: A row of 15 dotted Р characters for tracing.
- Row 4: A row of 15 dotted Р characters for tracing.
- Row 5: A row of 15 dotted Р characters for tracing.

The entire practice area is overlaid with a grid of diagonal lines that intersect the horizontal lines of the handwriting practice.

C - T

Cc c o o o o o o o o o o o o o o o o
c c c c c c c c c c c c c c c c c c
c c c c c c c c c c c c c c c c c c
C C C C C C C C C C C C C C C C C C

Tt ¹ n s t e s t e s t e s t e s t e s t e s
Tt Tt Tt Tt Tt Tt Tt Tt Tt Tt Tt Tt
t t t t t t t t t t t t t t t t t t
Tt Tt Tt Tt Tt Tt Tt Tt Tt Tt Tt Tt

Con con Con con Ttan man Ttan man

У - Ф

The image shows a handwriting practice sheet for the Cyrillic letters 'У' and 'Ф'. It is divided into two main sections, one for 'У' and one for 'Ф'. Each section contains several rows of practice on a four-line staff. The first row of each section shows the letters in a large, bold font, followed by a row of smaller letters with arrows indicating the stroke direction. The subsequent rows consist of multiple columns of the letter, each column containing a series of smaller letters for tracing or repetition. The 'У' section includes a row of 'У' followed by a row of 'у'. The 'Ф' section includes a row of 'Ф' followed by a row of 'ф'. At the bottom of the sheet, there are two rows of words: 'Уен уен' and 'Уж уж', each followed by a row of smaller versions of the same words for practice.

X - Ц

X x c c c c c c c c c c c c c c c c
x x x x x x x x x x x x x x x x
X X X X X X X X X X X X X X X X

Ц ц ц ц ц ц ц ц ц ц ц ц ц ц ц ц
ц ц ц ц ц ц ц ц ц ц ц ц ц ц ц ц ц
Ц Ц Ц Ц Ц Ц Ц Ц Ц Ц Ц Ц Ц Ц Ц Ц

Xoxo Xoxo Цуца цуца Цуца цуца

Ч - Ш

Handwritten practice for the Cyrillic letters Ч and Ш on ruled lines. The page is divided into two sections by a diagonal line.

Section 1 (Top):

- Row 1: Cursive letter 'Ч' followed by a series of strokes showing the formation of the letter.
- Row 2: Cursive letter 'ч' followed by a series of strokes showing the formation of the letter.
- Row 3: A row of cursive 'ч' characters.
- Row 4: A row of cursive 'ч' characters with a dot above them.

Section 2 (Bottom):

- Row 5: Cursive letter 'Ш' followed by a series of strokes showing the formation of the letter.
- Row 6: Cursive letter 'ш' followed by a series of strokes showing the formation of the letter.
- Row 7: A row of cursive 'ш' characters.
- Row 8: A row of cursive 'ш' characters with a dot above them.

Section 3 (Bottom):

- Row 9: Cursive words 'Час' and 'час'.
- Row 10: Cursive words 'Шар' and 'шар'.

Щ - ъ

Щ 1 2 3 4 5 6 7 8 9 10 11 12 13 14 15 16 17 18 19 20 21 22 23 24 25 26 27 28 29 30
 щу
 Щука щука Щука щука Щука щука Щука

ъ 1 2 3 4 5 6 7 8 9 10 11 12 13 14 15 16 17 18 19 20 21 22 23 24 25 26 27 28 29 30
 погрѣм погрѣм погрѣм погрѣм погрѣм

Ы - Ы

ы ы ы ы ы ы ы ы ы ы ы ы ы
ы ы ы ы ы ы ы ы ы ы ы ы ы

Ыы Ыы Ыы Ыы Ыы Ыы Ыы Ыы Ыы

ы ы ы ы ы ы ы ы ы ы ы ы ы ы ы
ы ы ы ы ы ы ы ы ы ы ы ы ы ы ы

Ыыы Ыыы Ыыы Ыыы Ыыы Ыыы Ыыы Ыыы

Ыыыы Ыыыы Ыыыы Ыыыы Ыыыы Ыыыы Ыыыы

Э - Ю

The handwriting practice sheet is organized into two main sections: one for the letter 'Э' and one for 'Ю'. Each section contains a stroke order diagram, a row of dotted letters for tracing, and a row of solid letters for independent practice. The final row contains words for each letter.

Э Section:

- Stroke order:** A diagram showing the letter 'Э' formed by a single stroke starting from the top left and moving in a wavy path to the bottom right.
- Tracing:** A row of 15 dotted 'Э' characters on a four-line grid for tracing.
- Practice:** A row of 15 solid 'Э' characters on a four-line grid for independent practice.

Ю Section:

- Stroke order:** A diagram showing the letter 'Ю' formed by two strokes: a vertical line down on the left and a curved line starting from the top right, curving down and then up to the right.
- Tracing:** A row of 15 dotted 'Ю' characters on a four-line grid for tracing.
- Practice:** A row of 15 solid 'Ю' characters on a four-line grid for independent practice.

Final Row:

Экс экс Экс экс Юна юна Юна юна

Я

