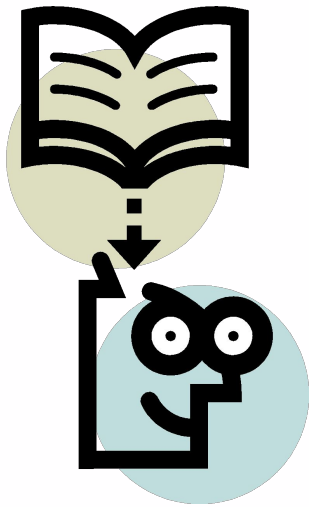


ПРОЕКТНО -
ИССЛЕДОВАТЕЛЬСКАЯ
ДЕЯТЕЛЬНОСТЬ ПРИ
ОБУЧЕНИИ
АНГЛИЙСКОМУ ЯЗЫКУ

Учитель
МБОУ «СОШ №74 г.Астрахани»
Нигмаджанова Г.З.

ПРОЕКТ -

это совокупность определённых действий,
замысел для создания реального объекта,
предмета или иного продукта



ОБРАЗОВАТЕЛЬНЫЙ ПРОЕКТ -

Это форма организации занятий, предусматривающая комплексный характер деятельности всех его участников по получению образовательной продукции за определённый промежуток времени



ИССЛЕДОВАТЕЛЬСКИЕ МЕТОДЫ:

- ❖ формулировка задач
- ❖ выдвижение гипотез их решения
- ❖ обсуждение методов исследования
- ❖ обсуждение способов представления результатов
- ❖ сбор данных, их систематизации и анализ
- ❖ ВЫВОДЫ



Основание типологизации	Виды проектов в данном типе
Доминирующая в проекте деятельность	<ul style="list-style-type: none"> - исследовательские; - информационные; - творческие; - ролевые (игровые); -практико-ориентированные
Предметно-содержательная область	<ul style="list-style-type: none"> - монопроект; - межпредметный; - надпредметный
Характер координации проекта	<ul style="list-style-type: none"> - открытая; - скрытая
Характер контактов	<ul style="list-style-type: none"> - внутришкольный; - региональный; - международный
Количество участников проекта	<ul style="list-style-type: none"> - индивидуальные; - парные; - групповые
Продолжительность выполнения	<ul style="list-style-type: none"> - краткосрочные; - средней продолжительности; - долгосрочные

КЛАССИФИКАЦИЯ СПОСОБНОСТЕЙ:

- ❖ природные (естественные);
- ❖ общие - специальные;
- ❖ учебные;
- ❖ творческие;
- ❖ способности к общению;
- ❖ предметно - познавательные.



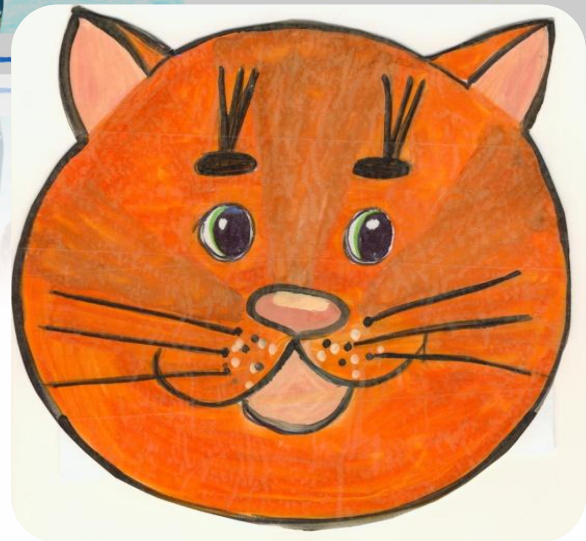
УЧЕБНО - МЕТОДИЧЕСКИЕ ЭТАПЫ ПРОЦЕССА ОБУЧЕНИЯ:

- I. Мотивационный (5-6 классы)
- II. Формирование основ исследовательской деятельности (7-8 классы)
- III. Вовлечение в исследовательскую деятельность (9-11 классы)





This is me on holiday at the seaside. It's a very hot. We're all having lots of fun! I love holidays!



Group 2. Project
"We Can Do A Lot!"



Walt Disney



with Disney first name Walter Elias DISNEY (1901-1966) American film director, writer and producer. Born in Chicago in family of four immigrants from Ireland. Since 1929, he worked as a script-composer in Los Angeles City. There Disney created the cartooning company, where he was working under the company name of Walt Disney Studios. He created a series of cartoon characters in the spirit of cartoonist Charles Schultz. He was also a pioneer in the field of animation. He made several cartoons, including the cartoon "Steamboat Willie" (1928), which was the first cartoon with sound. He also made several cartoons, including the cartoon "Steamboat Willie" (1928), which was the first cartoon with sound. He also made several cartoons, including the cartoon "Steamboat Willie" (1928), which was the first cartoon with sound.



Disney

Animals!!!

YAKAMA BAWAKA
Yakama Bawaka is a species of...
WOLF
Wolves are...
KORONORU
Koronoru is a species of...
WOLF
Wolves are...
WOLF
Wolves are...

20/04/2011



Michael Jackson -

"The King of pop music"



Starting with a picture of "Snow White and the Seven Dwarfs" (1937), Disney turned to feature films. This was followed by the creation of a new specially equipped studio facility in Burbank (1939). Following the success of "Snow White" success followed by feature films "Pinocchio" (1940), "Fantasia" (1940), "Dumbo" (1941) and especially "Bambi" (1942), a poetic story about a young deer.

After the 2nd World War, during which Disney moved on to release custom educational, motivational and promotional films, he continued to produce entertainment full-length movies during "Cinderella" (1950), "Princess and the Pea" (1953), "Peter Pan" (1953), "Sleeping Beauty" (1959), "One Hundred and One Dalmatians" (1961), "Mary Poppins" (1964), based on a combination of the actor and music, "The Jungle Book" (1967), was completed when the team of Disney and others, but for their high professional level they are best regarded to achieve the 30...

In the late 50's, 60's Disney gradually switched to the production of documentary series of the series "True and Wonderful" (1954), "Peter Pan" (1953), "Sleeping Beauty" (1959), "One Hundred and One Dalmatians" (1961), "Mary Poppins" (1964), based on a combination of the actor and music, "The Jungle Book" (1967), was completed when the team of Disney and others, but for their high professional level they are best regarded to achieve the 30...

"Electric Light Orchestra" Category: Rock Band UK rock band



Personal creativity of this group and its leader, an outstanding composer and conductor, was the main reason for the success of the Electric Light Orchestra. The band's music is a unique blend of rock and classical music. The band's music is a unique blend of rock and classical music. The band's music is a unique blend of rock and classical music.

Their first album was released in 1971. It was called "Electric Light Orchestra". The band's music is a unique blend of rock and classical music. The band's music is a unique blend of rock and classical music. The band's music is a unique blend of rock and classical music.

Their first album was released in 1971. It was called "Electric Light Orchestra". The band's music is a unique blend of rock and classical music. The band's music is a unique blend of rock and classical music. The band's music is a unique blend of rock and classical music.

In addition to the members of the Electric Light Orchestra, the band also includes several other musicians. The band's music is a unique blend of rock and classical music. The band's music is a unique blend of rock and classical music. The band's music is a unique blend of rock and classical music.

Their first album was released in 1971. It was called "Electric Light Orchestra". The band's music is a unique blend of rock and classical music. The band's music is a unique blend of rock and classical music. The band's music is a unique blend of rock and classical music.



20/04/2011



Спасибо за внимание!