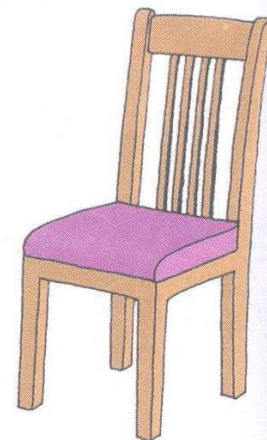
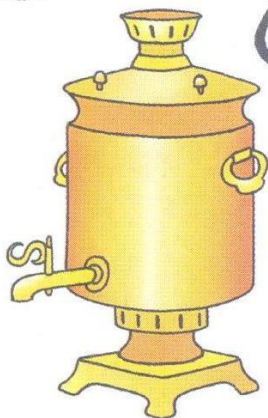
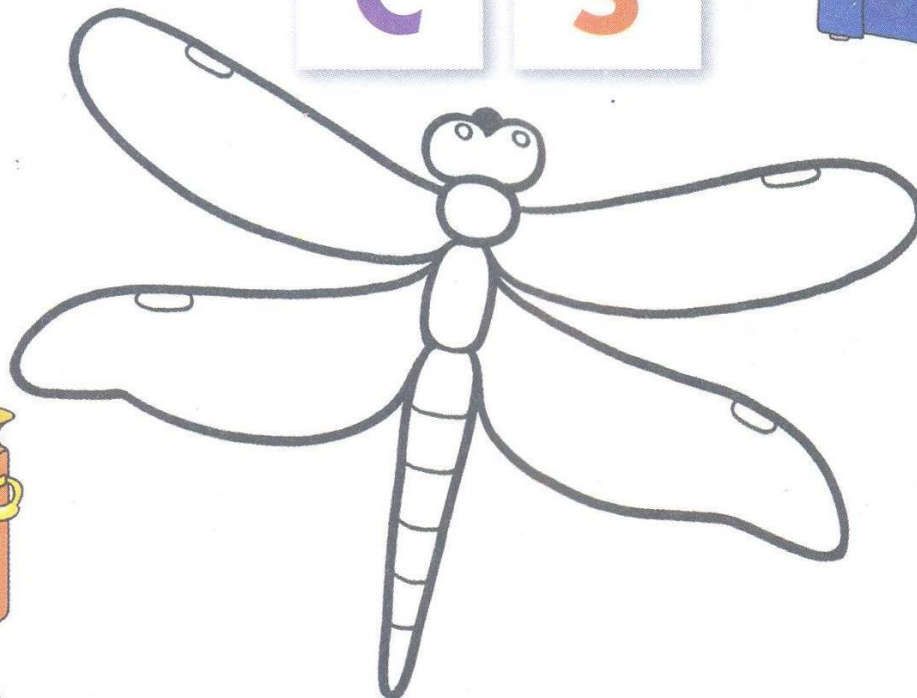
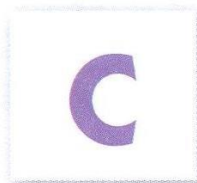
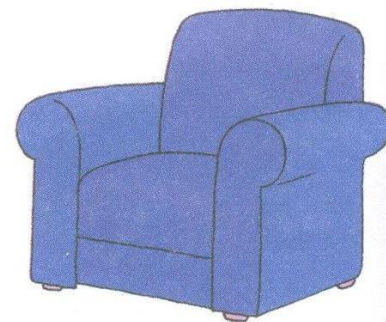
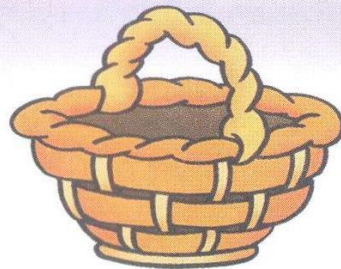
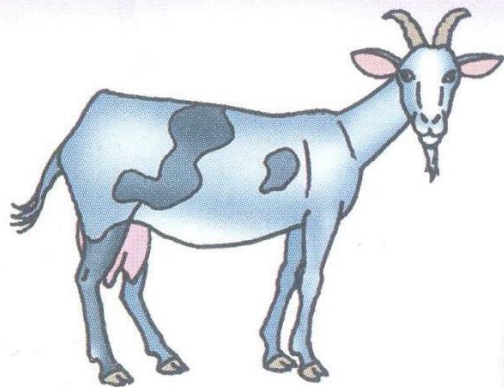
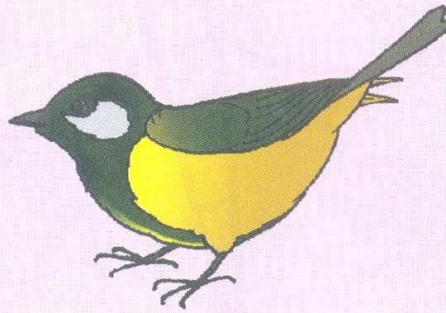
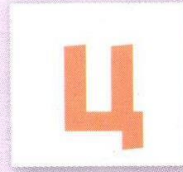
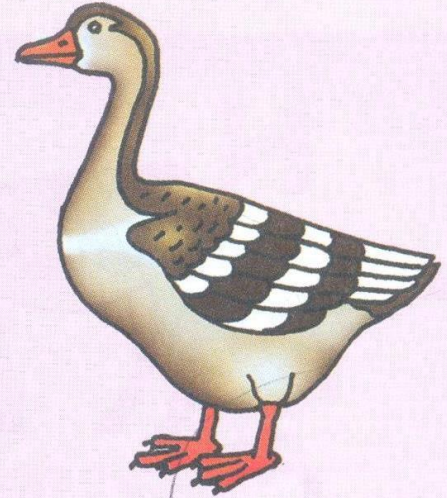
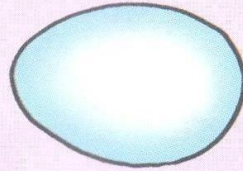
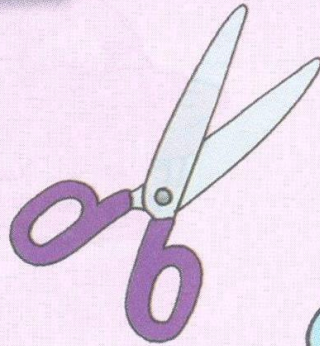
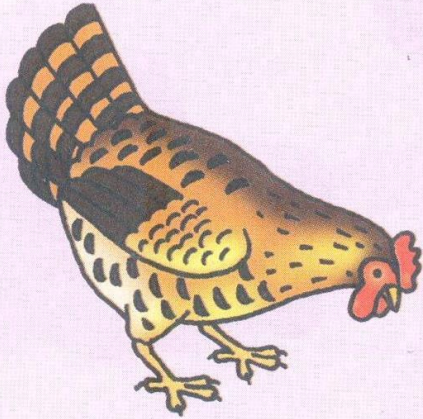


Дружные звуки

Звуки С — З

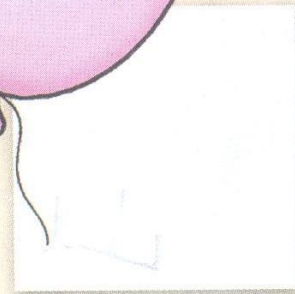
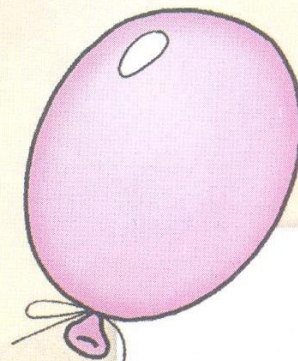
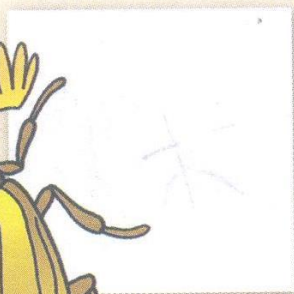
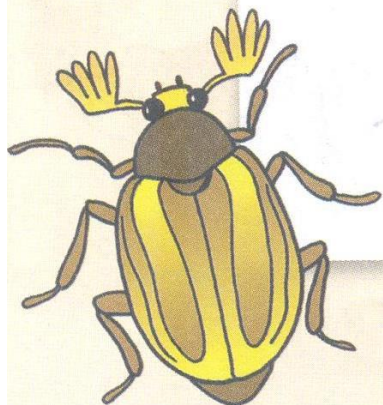
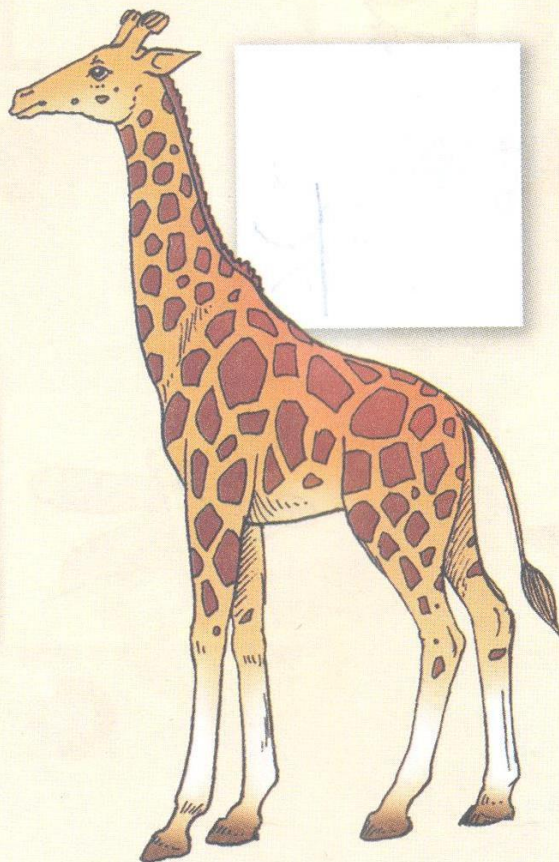
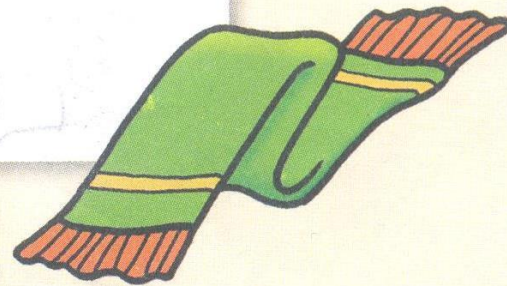


Звуки С — Ц

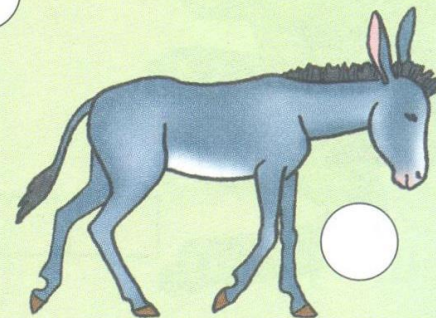
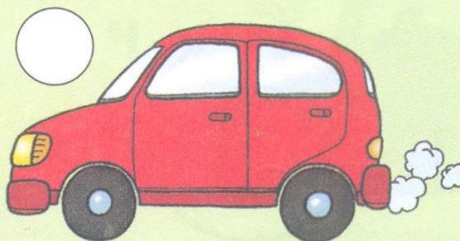
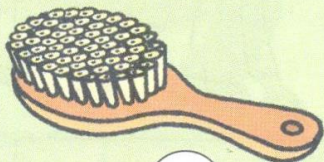
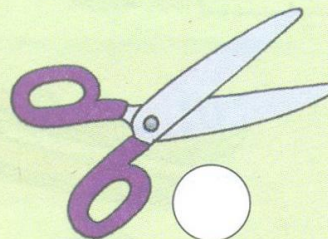
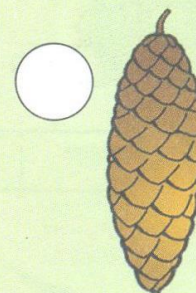
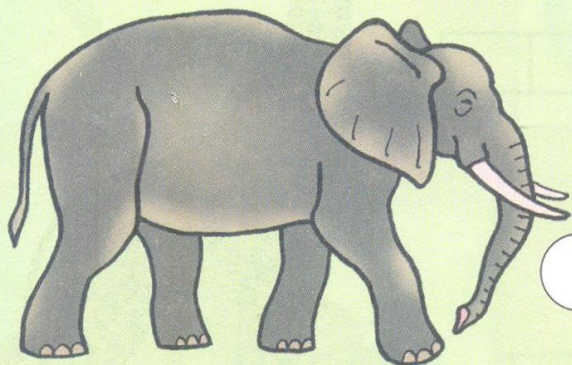


Звуки Ж – Ш

Ж Ш

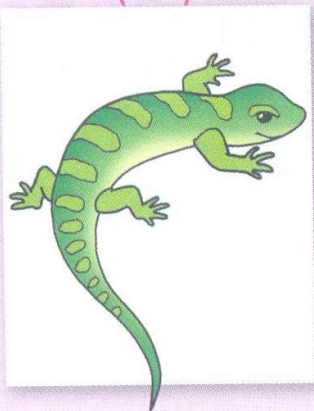


Звуки С – Ш

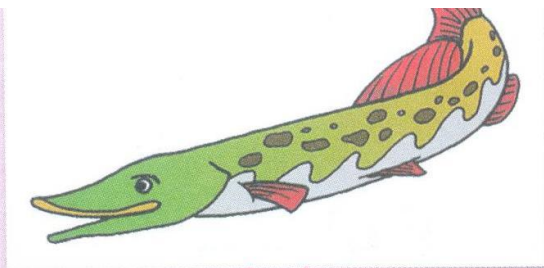


Звуки Ч – Щ

Ч
Щ

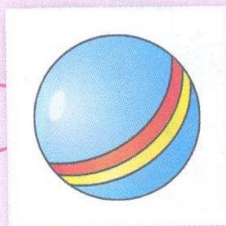


Ч
Щ

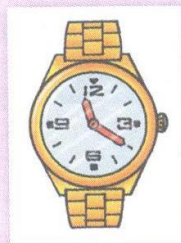


Ч
Щ

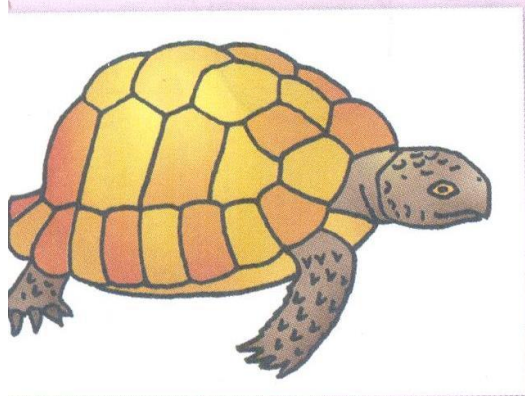
Ч
Щ



Ч
Щ



Ч
Щ

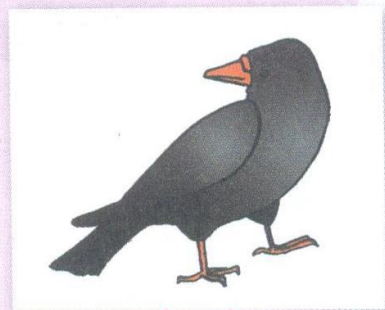


Ч
Щ

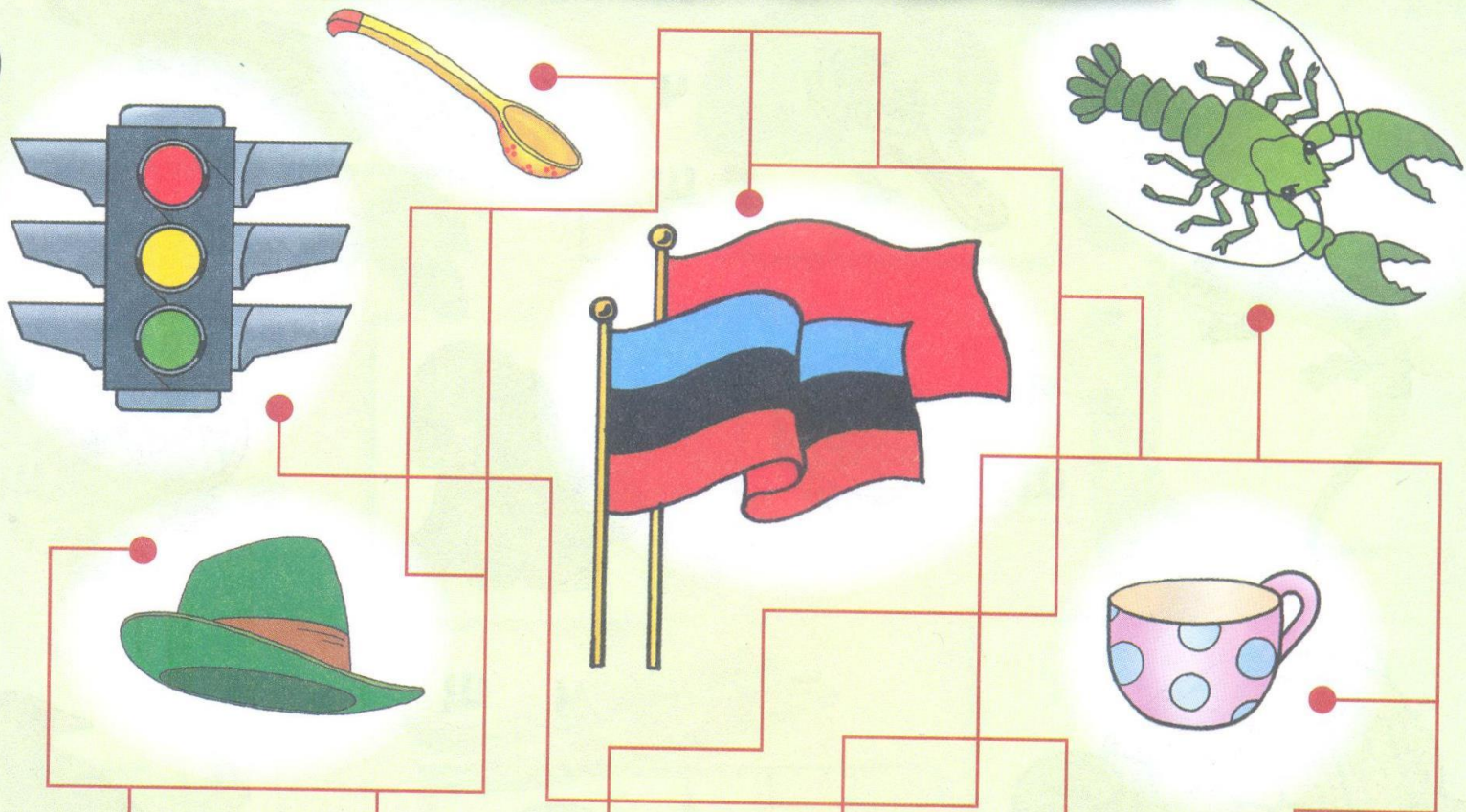
Ч
Щ



Ч
Щ



С какого звука начинается слово?



Ч

Р

Ф

Л

Ш

С