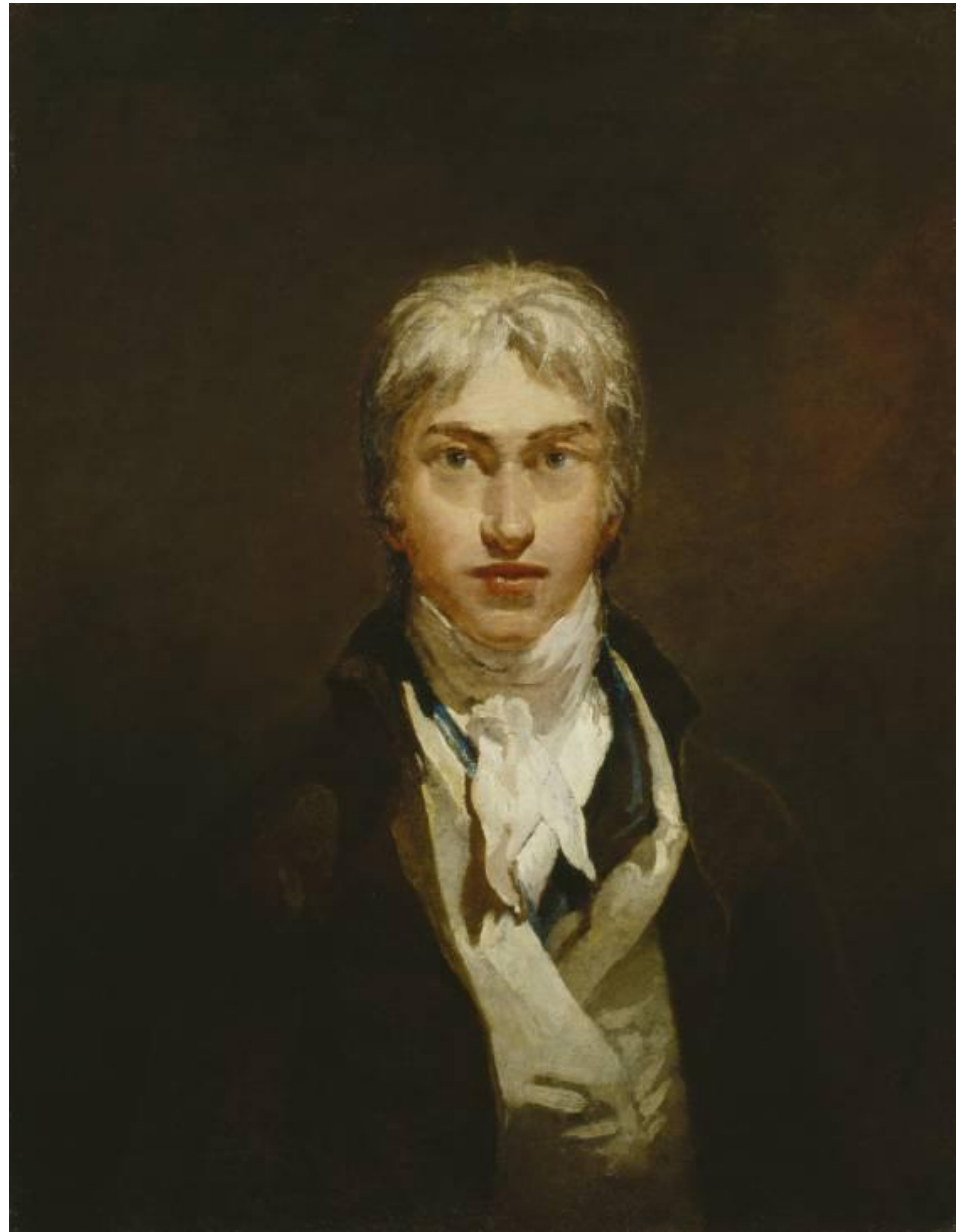


**Joseph Mallord  
William Turner  
(1775-1851)**

## **LIFE AND WORK**

British Romantic landscape painter, water-colorist and printmaker, known as "the painter of light".

His work is regarded as a Romantic preface to Impressionism.





**St John's Church Margate (1784)**



**The Fishermen at the Sea (1796)**



**The Battle of Trafalgar (1806)**



**Snow Storm (1812)**



**Crossing the Brook (1815)**



**Raby Castle (1817)**



**Ivy Bridge, Devonshire**





**The Battle of Trafalgar (1822)**



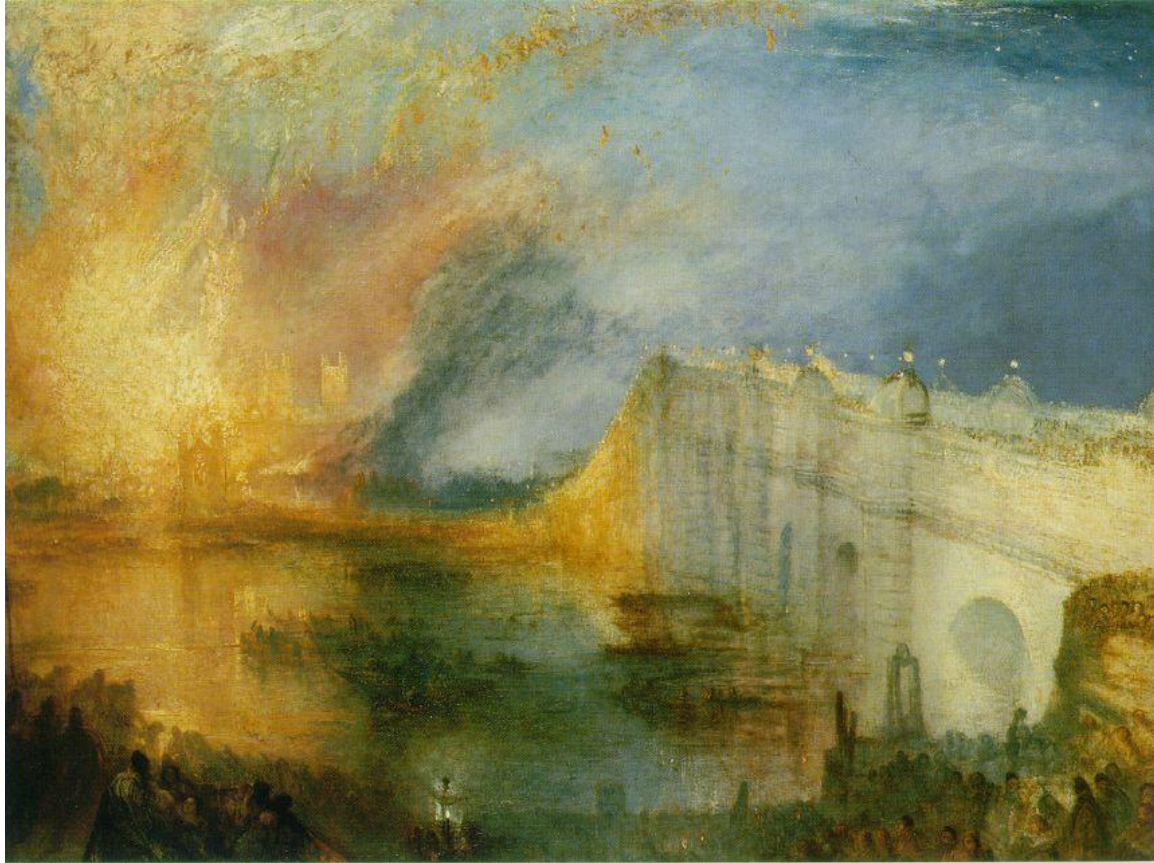
**Wreckers -Coast of Northumberland, with a Steam-Boat  
Assisting a Ship off a Shore (1833-1834)**



**Venice: The Dogana and San Giorgio Maggiore (1834)**



**Venice, from the Porch of Madonna della Salute (1835)**



**The Burning of the House of Lords and Commons (1835)**



**The Burning of the House of Lords and Commons (1835)**



**The Fighting Téméraire tugged to her last Berth to be broken (1838)**



**Slave Ship (1840)**





**The Blue Rigi (1842)**



**The Evening of the Deluge (1843)**

# Internet Resources

- [http://en.wikipedia.org/wiki/J. M. W. Turner](http://en.wikipedia.org/wiki/J._M._W._Turner)
- <http://www.tate.org.uk/art/artworks/turner>
- <http://www.metmuseum.org/toah/works-of-art>
- <http://www.wikipaintings.org/en/william-turner/ivy-bridge-devonshire>
- <http://artsy.net/artwork/joseph-mallord-william-turner-wreckers-coast>
- <http://www.tate.org.uk/art/artworks/turner-fishermen-at-sea-t01585>