

# A Trip To The World Of Knowledge

Учитель английского языка  
МБОУ «СОШ №35 им. К.Д.  
Воробьёва» г.Курска  
Красникова Ольга Анатольевна





# Tongue-twisters





*Read as quickly as you can.*

- **Hickery, pickery my black cat likes to sit in my blue hat.**



- **A girl sees three big grey geese.  
Sid sees six geese.**





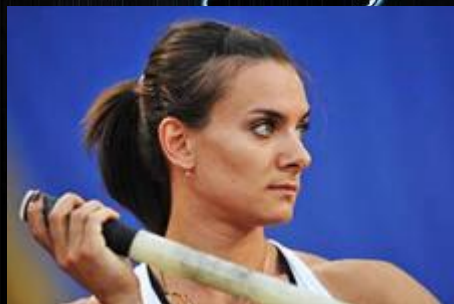
# FAMOUS PEOPLE

NORTH AMERICA

ASIA



SOUTH AMERICA







1. Prince William and Kate Middleton ... from the UK.



**2. Barack Obama ...  
from**

**3.**

**The Queen  
of the UK**

**...**

**Elizabeth II**







**4. The president  
of Russia ...  
V. Putin.**



# WORLDWISER





A large question mark is drawn in the sand on a beach. The sand is a golden-brown color and has a fine, granular texture. The question mark is formed by a thick line of sand, with a circular top and a curved tail. Overlaid on the lower half of the question mark is the text "Put the words in the correct order" in a bold, green, sans-serif font. The text is arranged in two lines: "Put the words" on the top line and "in the correct order" on the bottom line. The background is a close-up of the sand, showing the individual grains and the shadows cast by the question mark's lines.

**Put the words  
in the correct order**





Taj Mahal, in, is, India



**The statue of Christ,  
Brazil, is, in.**



# Animals of the World





**A polar bear (live) in  
the Arctic.**



Lemures (live) on the  
Madagascar.



A close-up photograph of a snail's head and shell. The snail's head is a vibrant green color, and its shell is a rich, glossy brown. The snail's mouth is wide open, revealing a dense array of small, white, sharp teeth. Two large, white, circular eyes are visible on the snail's head. The background is dark and textured.

**Snails (have) got  
25 thousand teeth**





**A cat  
(have) got  
290 bones**



**Pets**

**in**

**different countries**



**Creative**



THE END