



Welcome to one
of the greatest states
of America!!!

Welcome to the state of Missouri!!!



Missuori



Missuori

Missouri

Missuori

Missuori

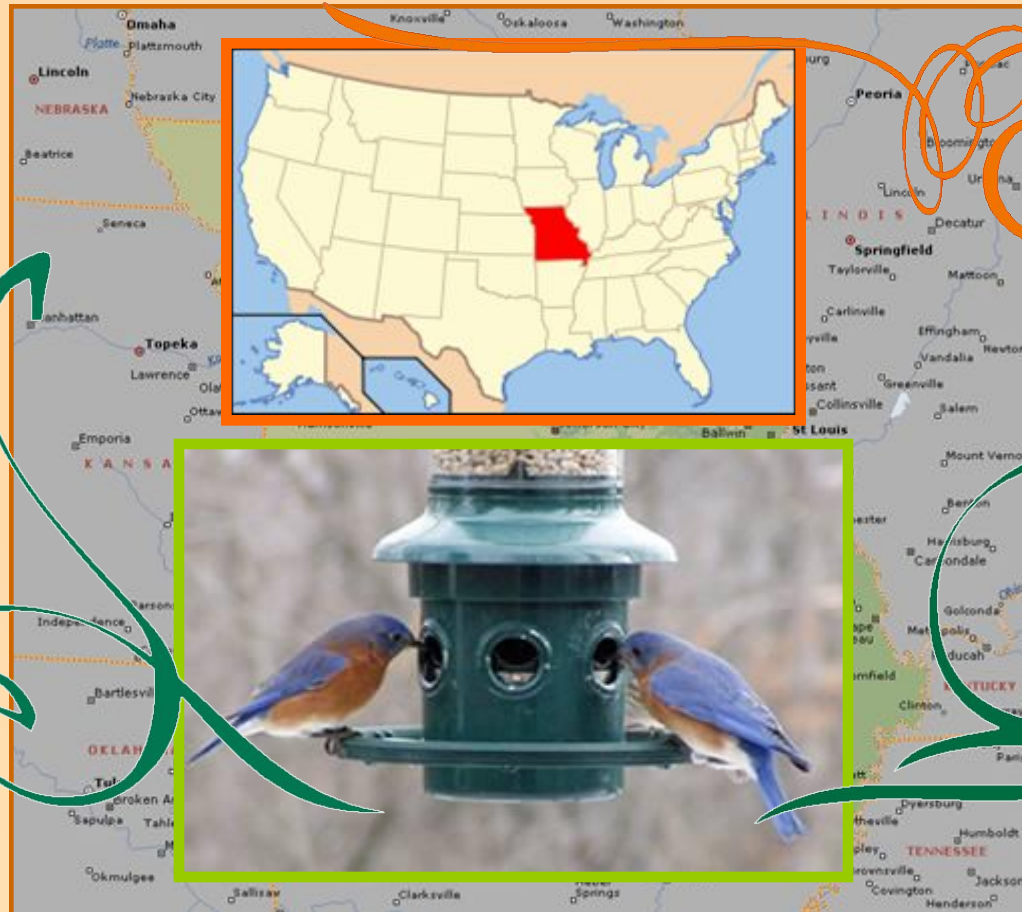
Missuori

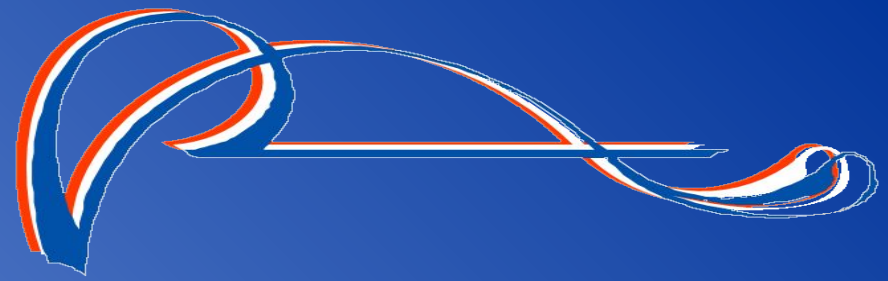


Missuori



*Missouri became the 24th State of the Union
on August 10, 1821.*





*The Flag
of the state
of Missouri*



*The Great Seal
of the state
of Missouri*



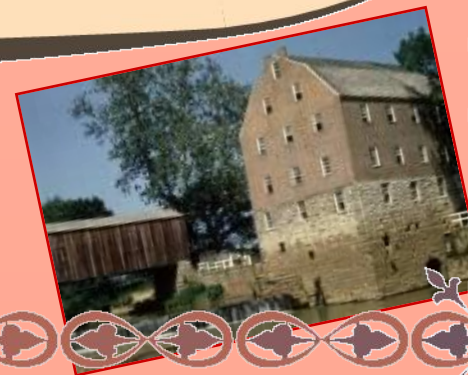
The nickname of the state of Missouri :

"Show Me The State"



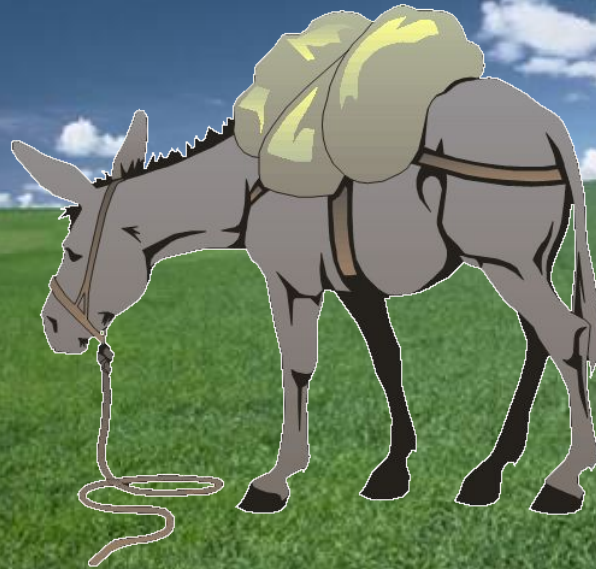
The State motto is:

*"The Welfare of the People
Shall Be the Supreme Law"*



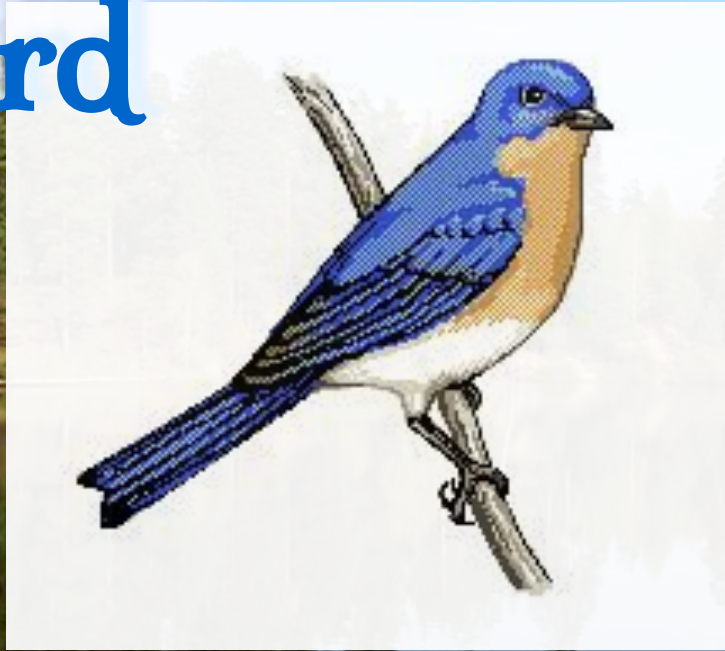
The State Animal

Mule



...physical resemblance to its parents is obvious.
The important mixture, however, is its (donkey) father's
stamina
and its (horse) mother's temperament and brute strength.
Mules are used worldwide in agriculture and as beasts of

Missouri's bird is the bluebird



The bluebird is related to the American and European robins.
This species feeds on grasshoppers, caterpillars, and beetles and a variety of flying insects, fruit, and berries.



The hawthorn is the
state flower of
Missouri



Missouri's tree is the dogwood



Most species of dogwood are trees with simple leaves,
but a few species, such as the flowering
dogwood, are popular for their ornamental
value. Many songbirds and small mammals
eat the fruit of the dogwood.

Flowering Dogwood





The insect of the state of
Missouri is the Honey Bee



The Capital of the State of Missouri is Jefferson City



Jefferson Thumb

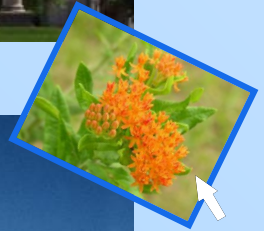


Jefferson City Capitol

The Northeast Region Old Courthouse and Arch



*The Capital of
the State of
Missouri is
Jefferson City*





Dominating the skyline in all directions, Missouri's state Capitol is a monument to her citizens.

The building rests upon a limestone bluff on the south bank of the Missouri River.

It is 437 feet long and 300 feet wide at its center.

The top of the dome towers 262 feet above the basement floor.

The building, which covers three acres, is literally a museum of public art, remarkable as a faithful reflection of the themes, events and people of Missouri.



This
tourist
attraction
is famous
for it's
beauty.



One of the tourist
attractions is
Missouri's gate.



Scout Sculpture,
Kansas City,
Missouri



Harry S. Truman

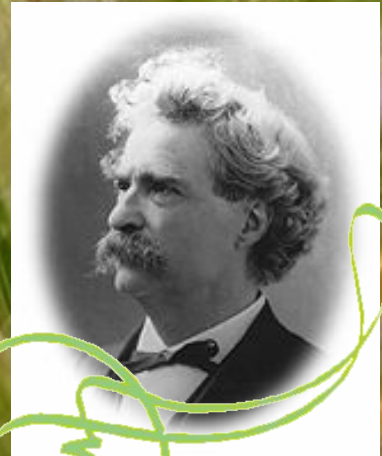


Harry S. Truman, the 33rd US President, came into office on the death of Franklin Roosevelt on April 12, 1945.

Within the first weeks of his presidency, the Allies had won the war in Europe. Truman then made one of the most difficult decisions that ever faced a US President, to use the new atomic bomb against Japan to end World War II.

Mark Twain

The great U.S. author Mark Twain wrote stories of youthful adventures that are treasured by readers around the world. He created such memorable characters as Tom Sawyer and Huck Finn.





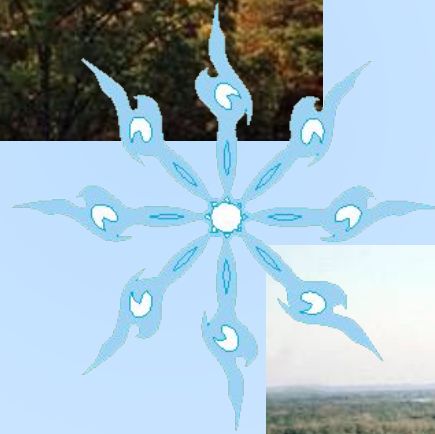
Central Region
**Restful Waters (Spring Trail
at Ha Ha Tonka State Park)**



Southwest Region
**Bennett Spring State Park
near Lebanon**

Mississippi River in Missouri

Most of the waters in Missouri flow into the Mississippi River. The Missouri crosses the state from west to east, where it flows into the Mississippi. The huge Mississippi River defines most of the state's eastern border.



Mark Twain National Forest

Mark Twain National Forest, *above*, is the only national forest in the state of Missouri.

It is situated in the southern part of the state in a region known as the Ozark Plateau, a large area characterized by forested hills, low mountains, and deep gorges.



Pony Express

In April 1860, the Pony Express began delivery of mail from St. Joseph, Missouri, to Sacramento, California. The mail was then taken by boat to San Francisco. Relays of young, lightweight, riders covered the 3,164-km (1,966-mi) journey in about 10 days. These riders faced hazardous weather conditions and hostile Native Americans. The Pony Express closed in October 1861, when transcontinental telegraph lines were completed.





THE HAMBURGER



**The hamburger has no connection to ham.
It got its name from the German town
of Hamburg, which was famous
for its ground steak.**

**German immigrants to the United States
introduced the "hamburger steak."**

**At the St. Louis World's Fair in 1904,
hamburger steaks were served on buns
for the first time.**

**Hamburgers on buns were convenient
and tasted good.**

**This became the usual way
of eating hamburgers.**



PEANUT BUTTER

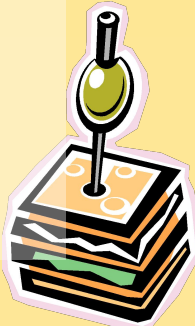


The peanut comes from South America, but peanut butter is a food that is truly “American”.

Peanut butter started in 1890 in St. Louis, Missouri.

A doctor made some peanut butter. He gave it to patients who could not eat regular food.

Later, peanut butter was popular as a health food.



THE SKUNK

The skunk is known mainly for its bad smell. Skunks are black and white and very furry. They are small — no larger than house cats.

When a skunk is in danger, it attacks by spraying a liquid from under its tail. This liquid has a terrible smell, which may last for many days.

A skunk can spray something from as far away as twelve feet.





THE RACCOON

The raccoon is famous for its ringed tail and for the black "mask" around its eyes. Raccoons can use their paws skillfully, and are quite intelligent.

They eat many different things—frogs, fish, birds' eggs, fruit, and mice.

Raccoons are not timid or afraid of people.

They'll often take food from garbage cans.

This explains, some people say, the black masks around their eyes—raccoons are garbage-can robbers!