



INFLUENCE OF GROWTH REGULATORS AND PHYSICAL FACTORS ON CAMELINA SATIVA SEEDLINGS.

By *Alexey Fedakov*

English advisor: *T. N. Fomina*

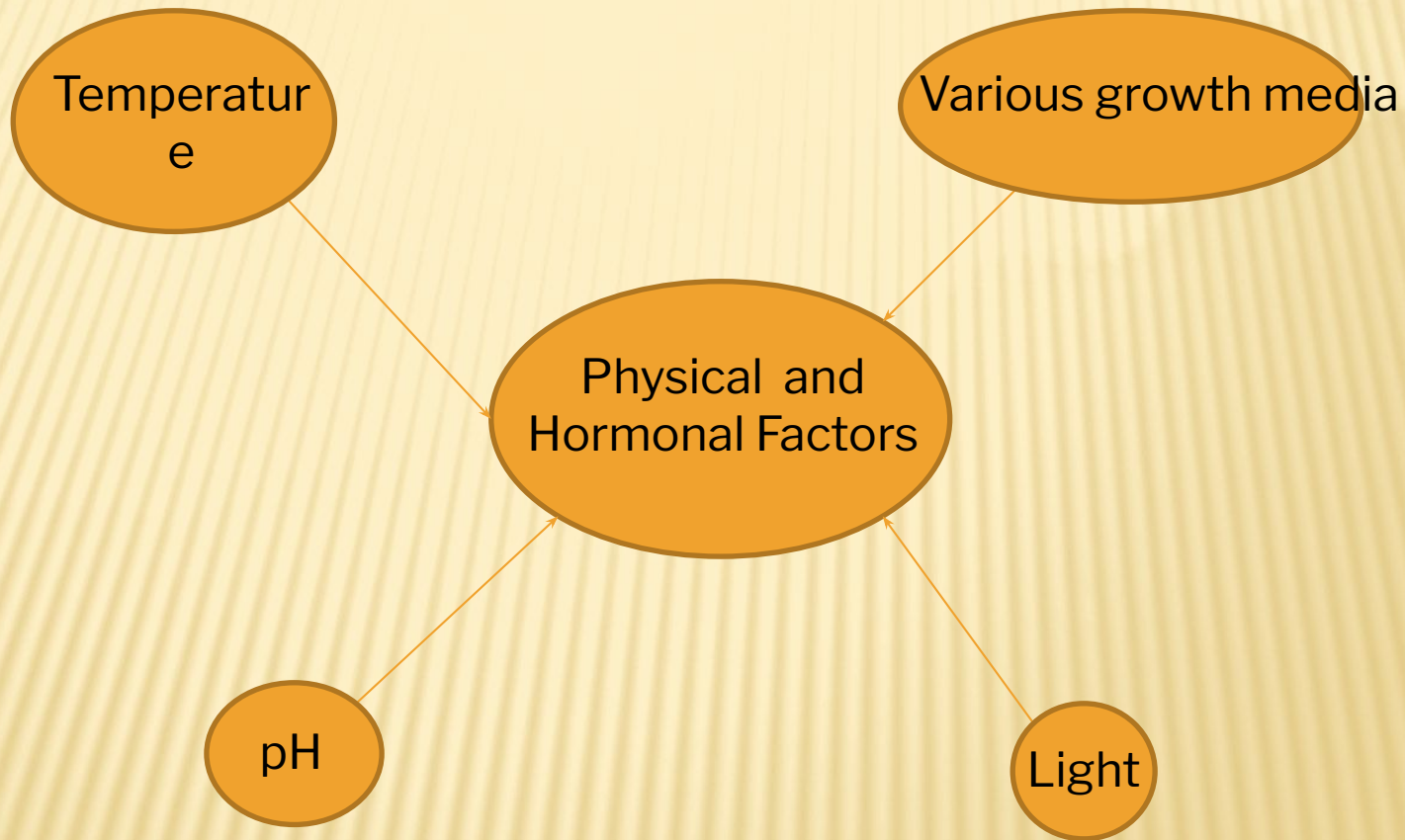
Scientific supervisor: *E. A. Kalashnikova*

Moscow 2019



PURPOSE AND OBJECTIVES

- Determine the post-effects of hormonal and physical factors on of *camelina sativa* seedlings.
- Research tasks:
 - 1) To analyze the influence of hormonal and physical nature factors on the sowing qualities of the seedlings *in vitro*,
 - 2) to research the influence of hormonal and physical factors on the morphogenetic potential of isolated explants *in vitro*.





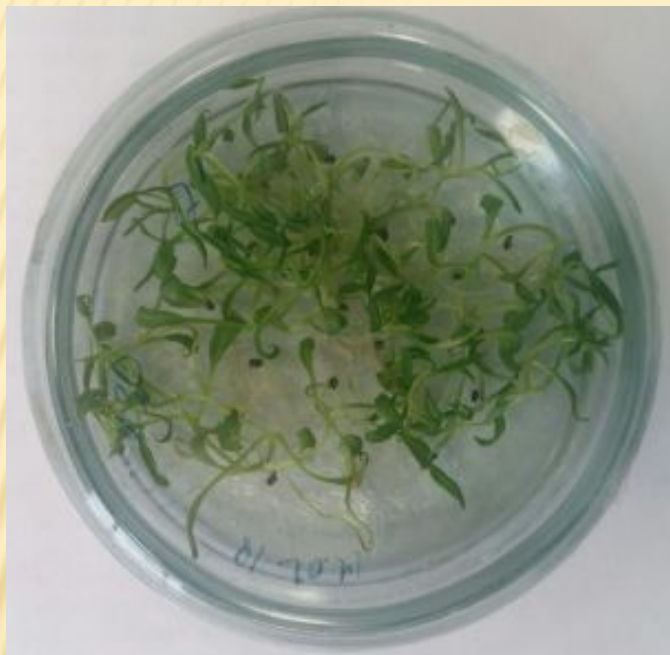
INTRODUCTION



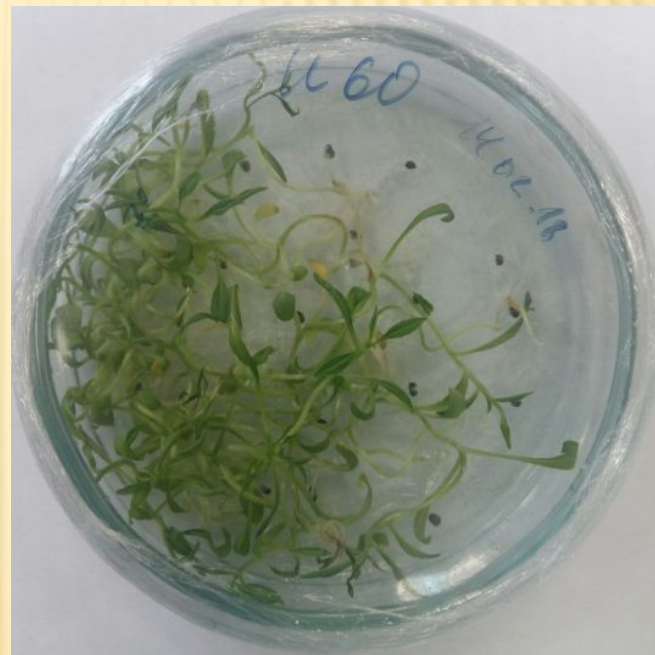
- ▣ **Camelina Sativa (Ryzhik)**



SUBJECT AND MATERIALS



Omich



Isilkulet

S



PLACE



Источник: Pkabu.ru

September 2018

2019

July 2020





EQUIPMENT



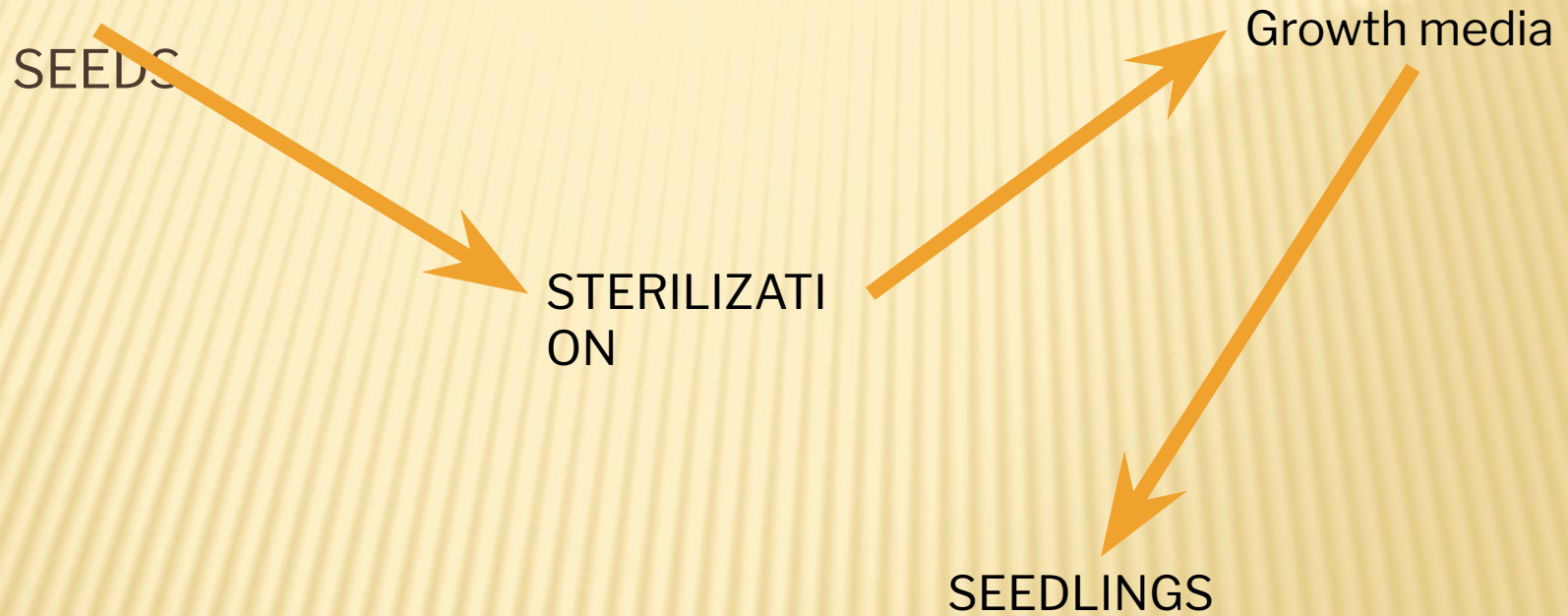
laminar brand TELSTAR



LPI-2(Light Power Inductor)



METHODS

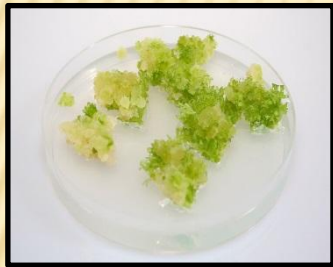




RESEARCH STAGES

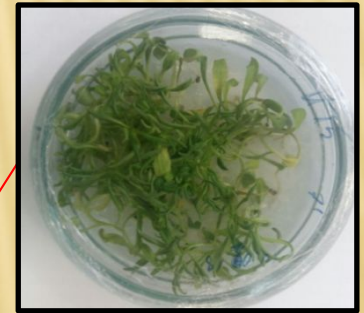
1

Obtaining sterile seedlings



2 Receiving callus

3 Getting plants - regenerants





EXPECTED RESULTS

- Hormonal and physical factors should positively affect the germination of seedlings of *Camelina Sativa*



CONCLUSION

- At the end of our work we plan finish analyze the influence of hormonal and physical nature factors on the sowing qualities and the morphogenetic potential of the seedlings in vitro,



SIGNIFICANCE

- The obtained results can serve as a basis for further research on the culture of the seedling in culture *in vivo*, as well as being the basis for research in culture *in vitro*, in conducting research on the morphogenesis and cell selection of seedling.

THANK YOU FOR BEING WITH US!