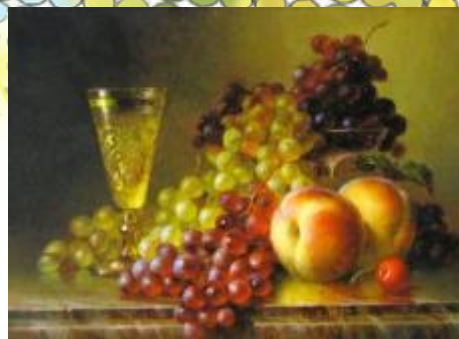


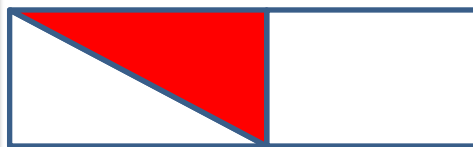
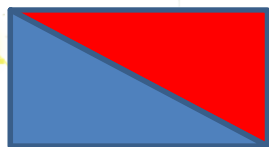


НЕЗНАЙ НАРИСОВ КАДАТЮРМО .

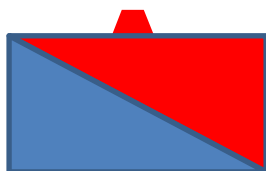




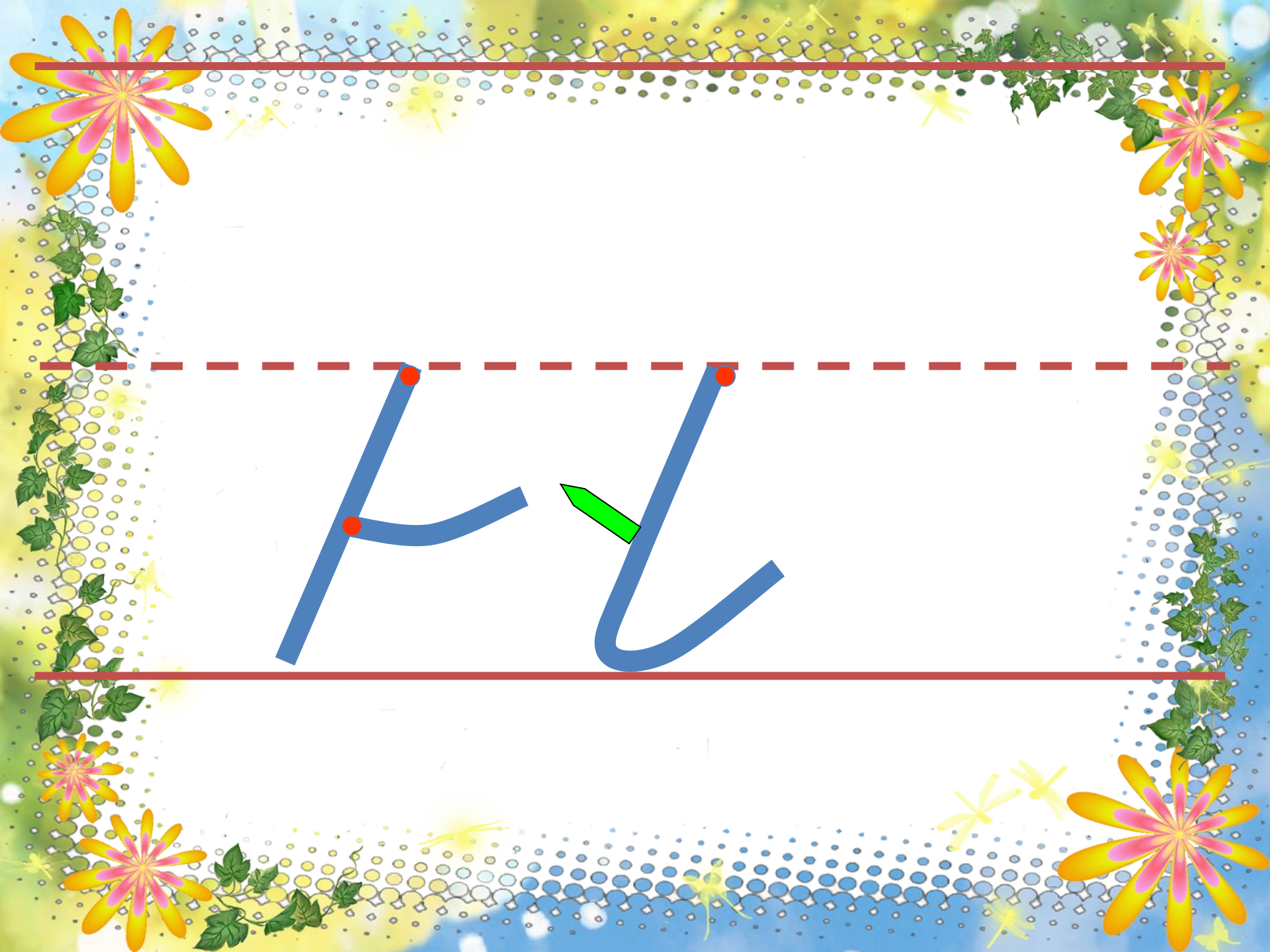
НАТЮРМО
РТ



H

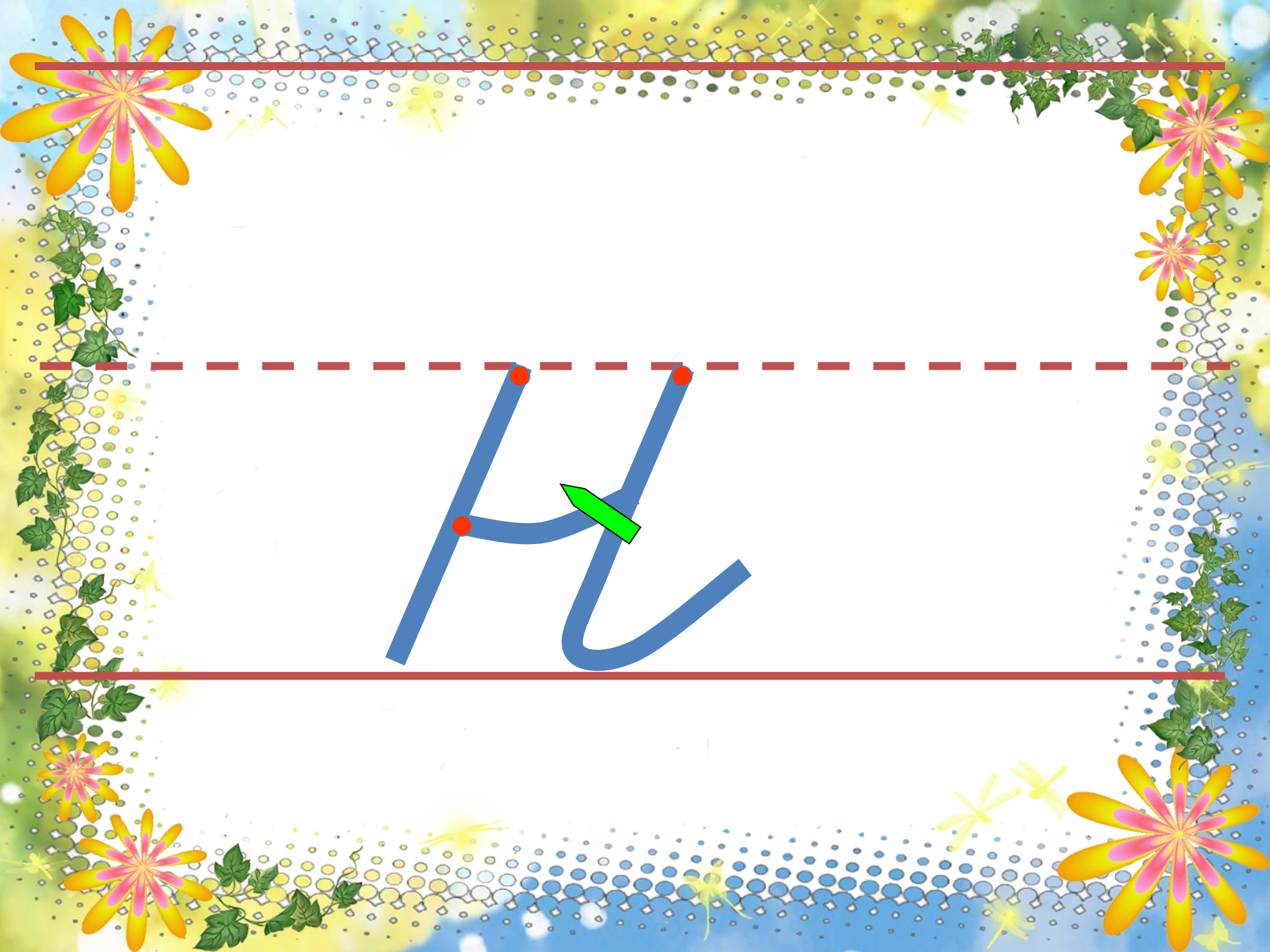


Handwriting practice for the letter 'H'. The image shows two examples of the letter 'H' written in blue ink on a set of three horizontal lines: a solid top line, a dashed middle line, and a solid bottom line. The first 'H' is a large uppercase letter, and the second is a smaller lowercase letter. Red dots indicate the starting points for the strokes: the top-left dot for the uppercase 'H', and the top-left and top-right dots for the lowercase 'h'. The background is decorated with a pattern of small blue and yellow circles, green vines, and colorful flowers.



K L





Handwriting practice lines consisting of a solid red top line, a dashed red middle line, and a solid red bottom line. The letter 'H' is written in blue ink between the top and bottom lines. A green arrow points to the right, indicating the direction of the second stroke of the letter.



НН

СОВЕТЫ

НН

на ...

но ...

ни ...

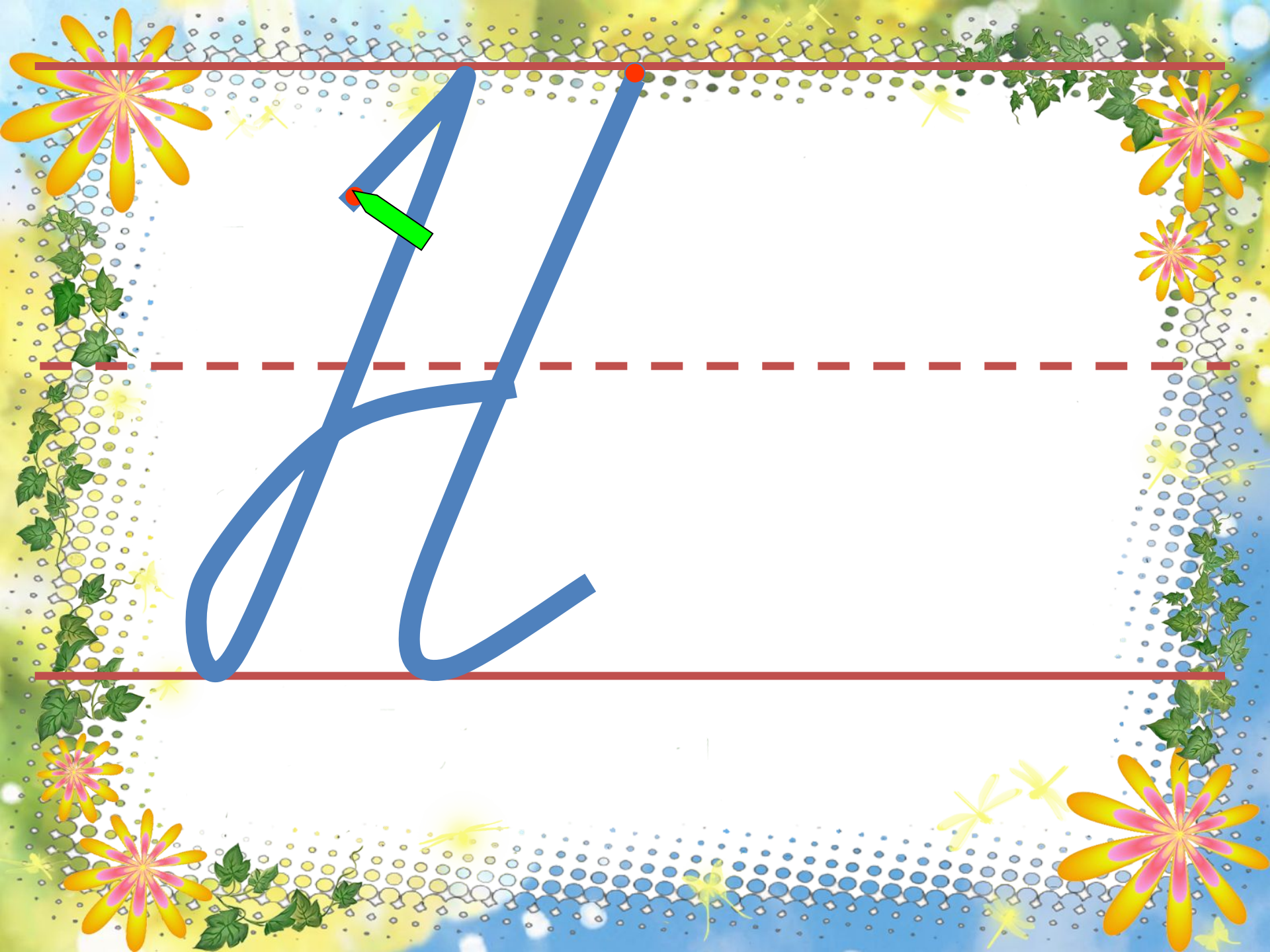
сос род
чи ша

тки жи
на раты

же кто



A large blue uppercase letter 'F' is positioned on the left side of the page, spanning from the top solid red line to the bottom solid red line. A red dot is at the top left of the letter, and a green arrow points to the top horizontal stroke. A large blue lowercase letter 'f' is positioned on the right side, also spanning from the top solid red line to the bottom solid red line, with a red dot at its top right end. A horizontal dashed red line runs across the middle of the page, between the two solid red lines.



A



НН

СНАМ

www.karusel-toys.ru

