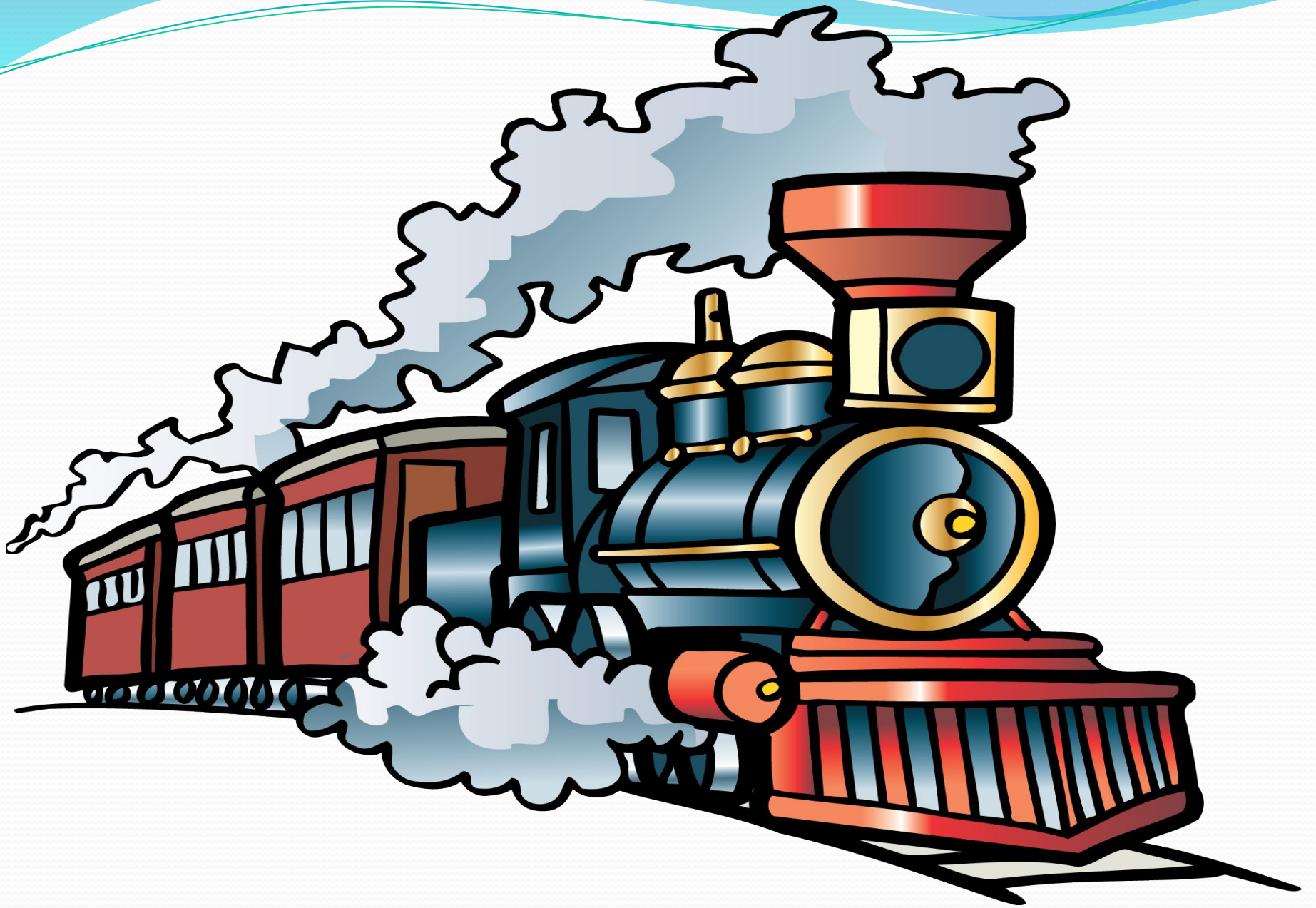


Путешествие по стране «Математике»

Образовательная область «Познавательное развитие»

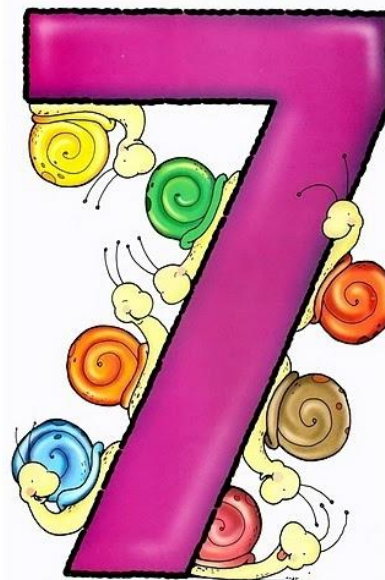




Станция:



«Математическая разминка»



1. Сколько дней в неделе?

2. Какие дни недели вы знаете?

3. Сколько углов у квадрата?

4. Сколько хвостов у пяти коров?

5. Сколько лап у двух гусей?

6. Если линейка длиннее карандаша, то карандаш...?

7. Если стол выше стула, то стул...?

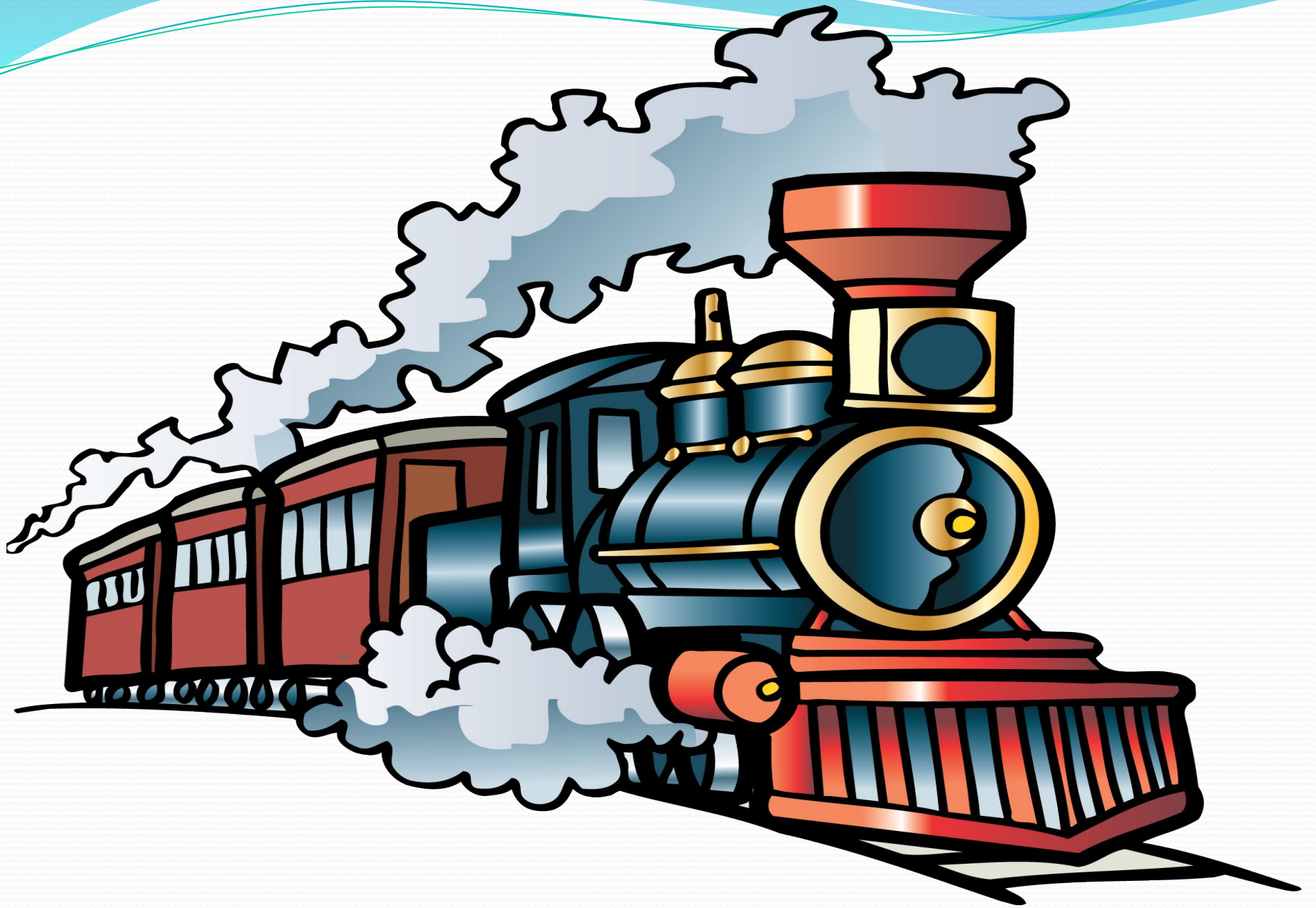
8. Если дорога шире тропинки, то тропинка...?

9. Сколько месяцев в году?

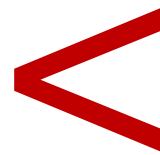
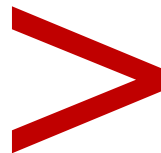
10. Сколько дней в месяце ?

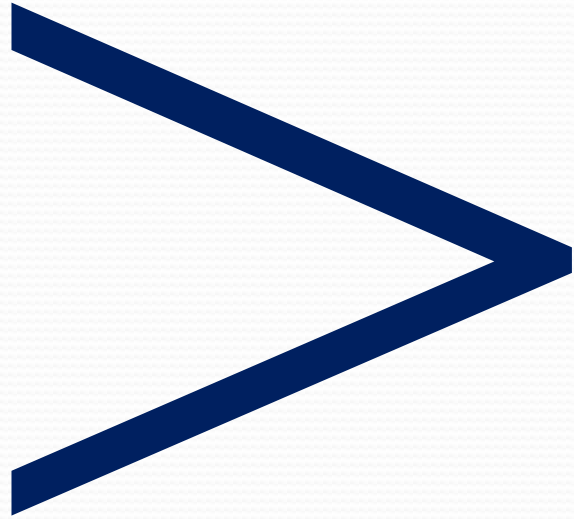
11. Самый короткий месяц в году ?

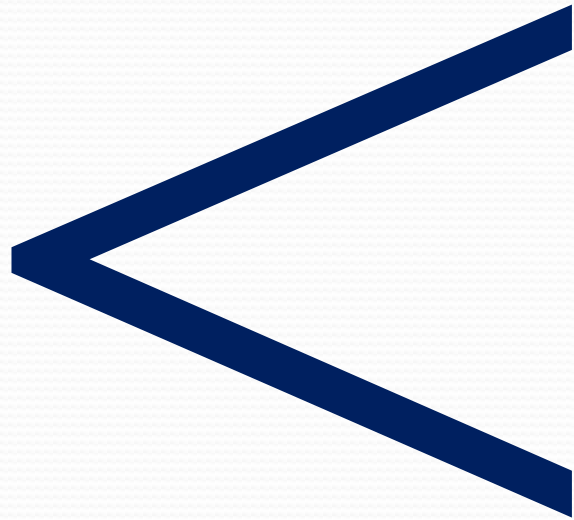
12. Как называются все фигуры с четырьмя углами? (Четырехугольники)



Станция: «Знакомство»



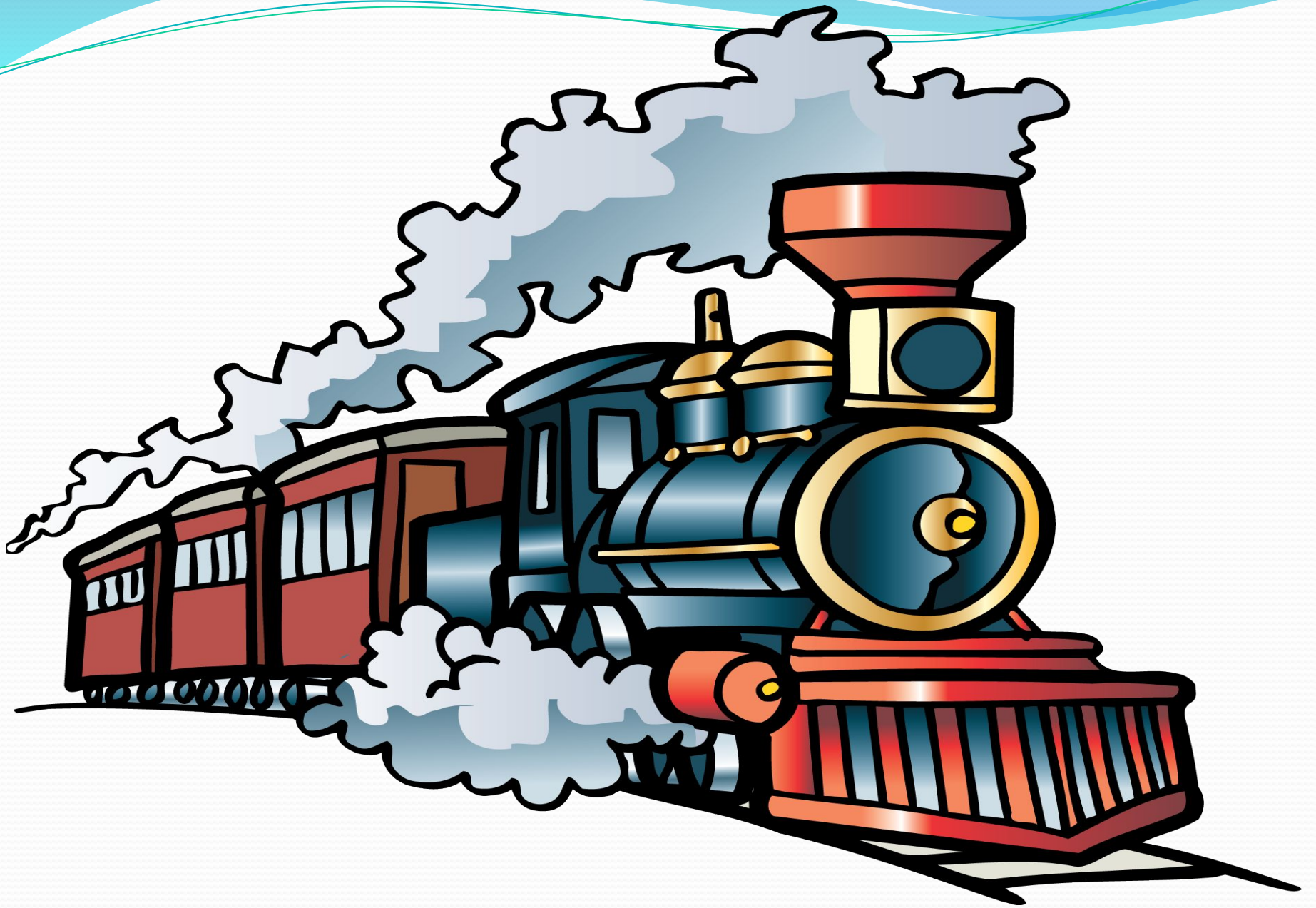






3	<	7
5	=	5

9	>	4
2	<	6



Станция: «Подумай»




$$2 + 6 = ?$$

$$7 - 3 = ?$$

$$4 + 5 = ?$$





3	-	1	=	2
---	---	---	---	---



Placeholder text for the top-left quadrant.



Placeholder text for the top-right quadrant.




Placeholder text for the middle-right quadrant.



Placeholder text for the bottom-left quadrant.

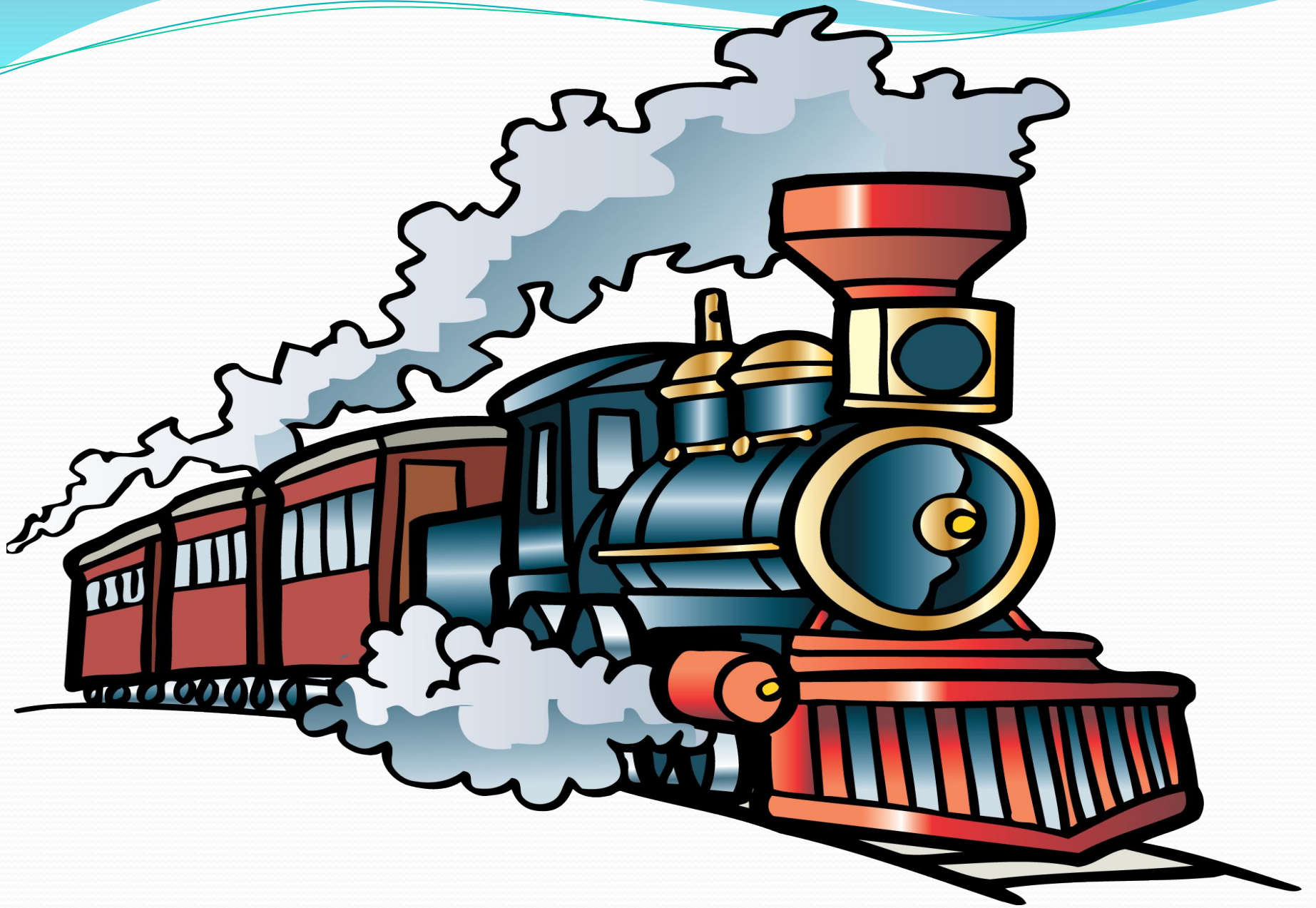


Placeholder text for the bottom-right quadrant.

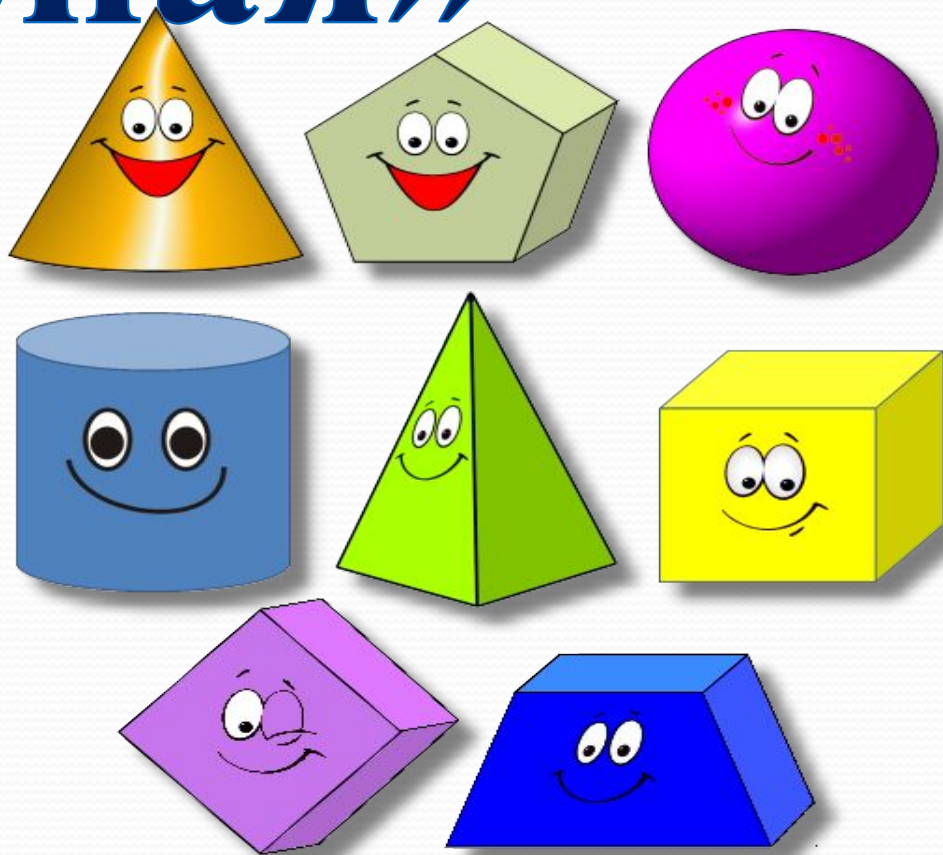


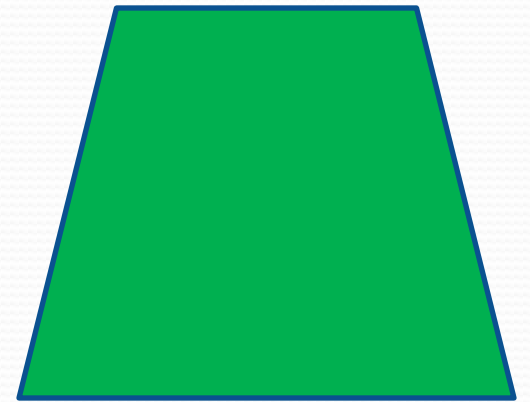
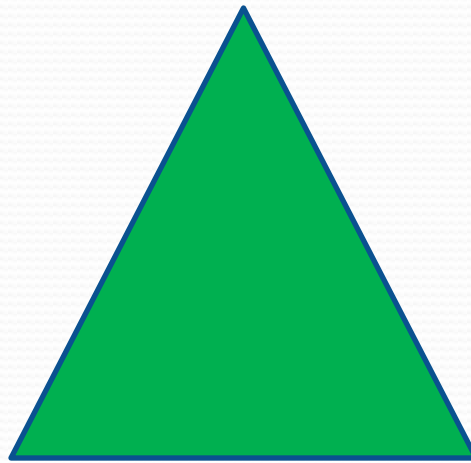
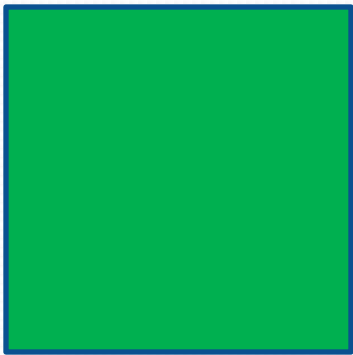
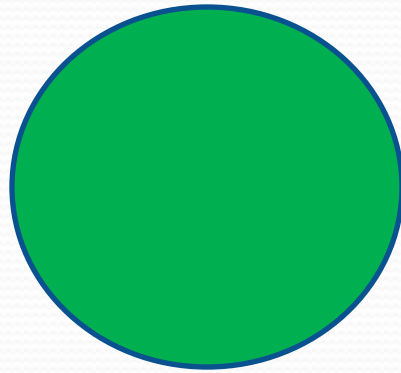
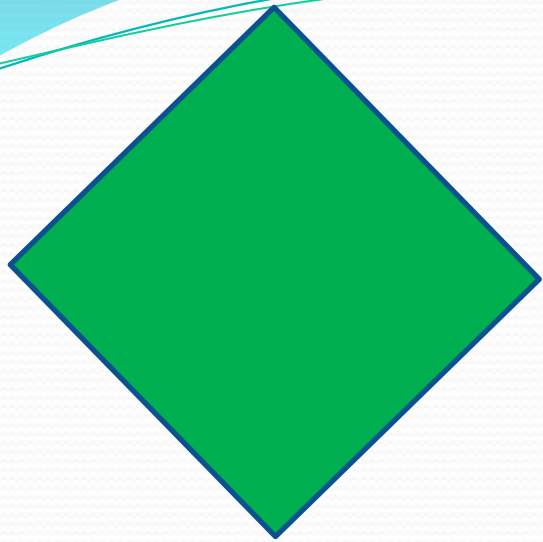
4	+	1	=	5
---	---	---	---	---

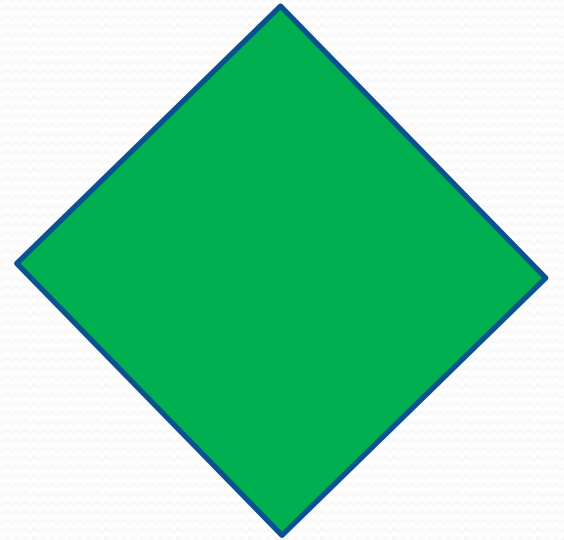
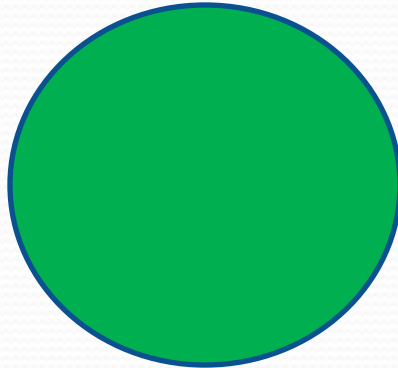
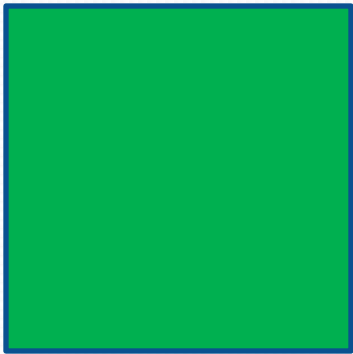
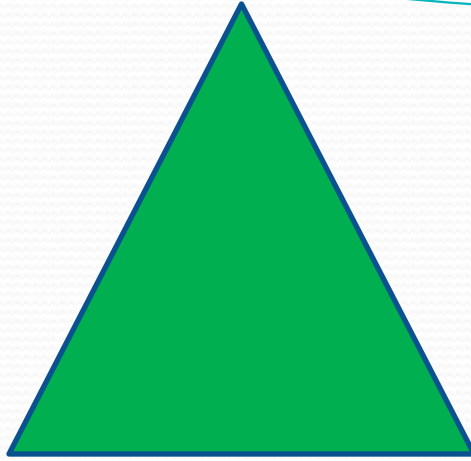
The image shows a mathematical equation $4 + 1 = 5$ presented in a grid format. The equation is divided into five equal-width cells. The first cell contains the number 4, the second contains the plus sign (+), the third contains the number 1, the fourth contains the equals sign (=), and the fifth contains the number 5. The numbers and symbols are in a large, black, serif font. The grid is a simple black outline on a white background.

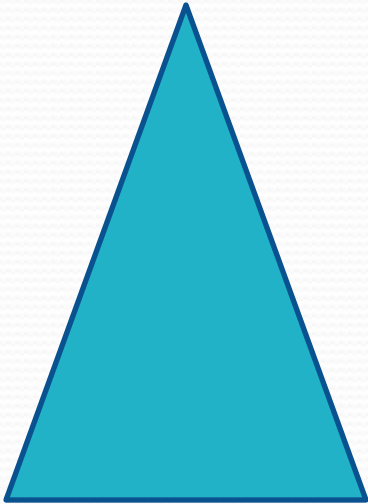
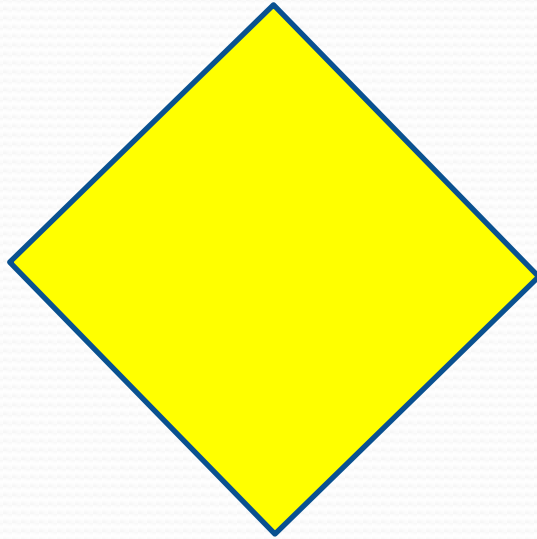


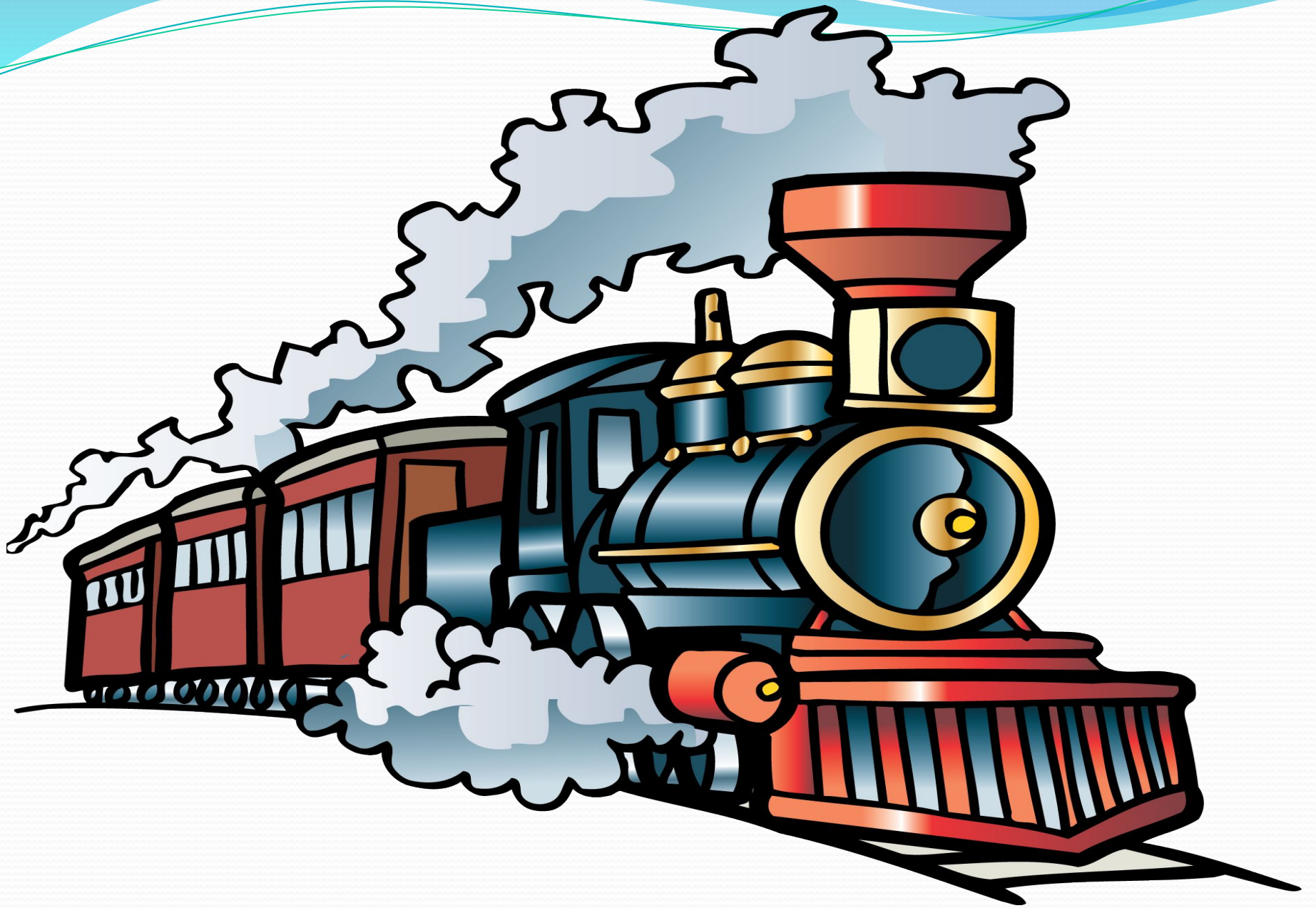
Станция: «Фигурная»







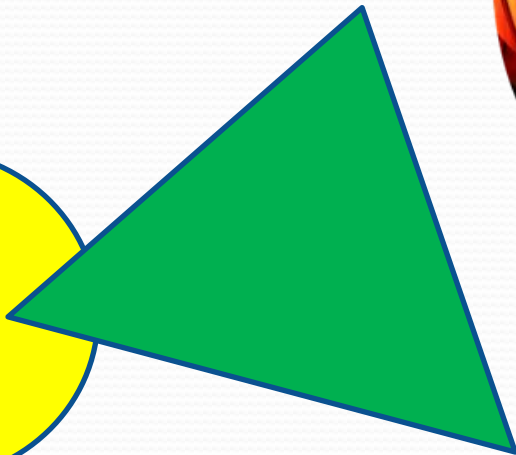
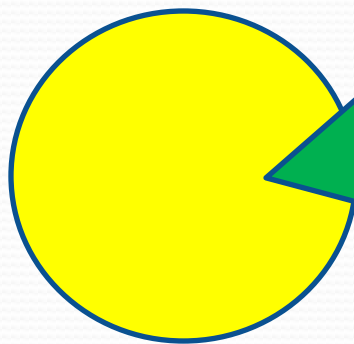




Станция: «Конечная»

5

6



2