

The International Young Scientists' Online Conference
MODERN TENDENCIES TO DEVELOPMENT OF CIVIL ENGINEERING

Multi-apartment residential building "Al-Yasamin" in Damascus

Lana Awwad
Student of L.N. Gumilyov Eurasian National University, Syria



AWWAD LANA

6/17/2019

2

OLYMPIA







OLYMPIA

OLYMPIA

BEFORE



AFTER





OLYMPIA



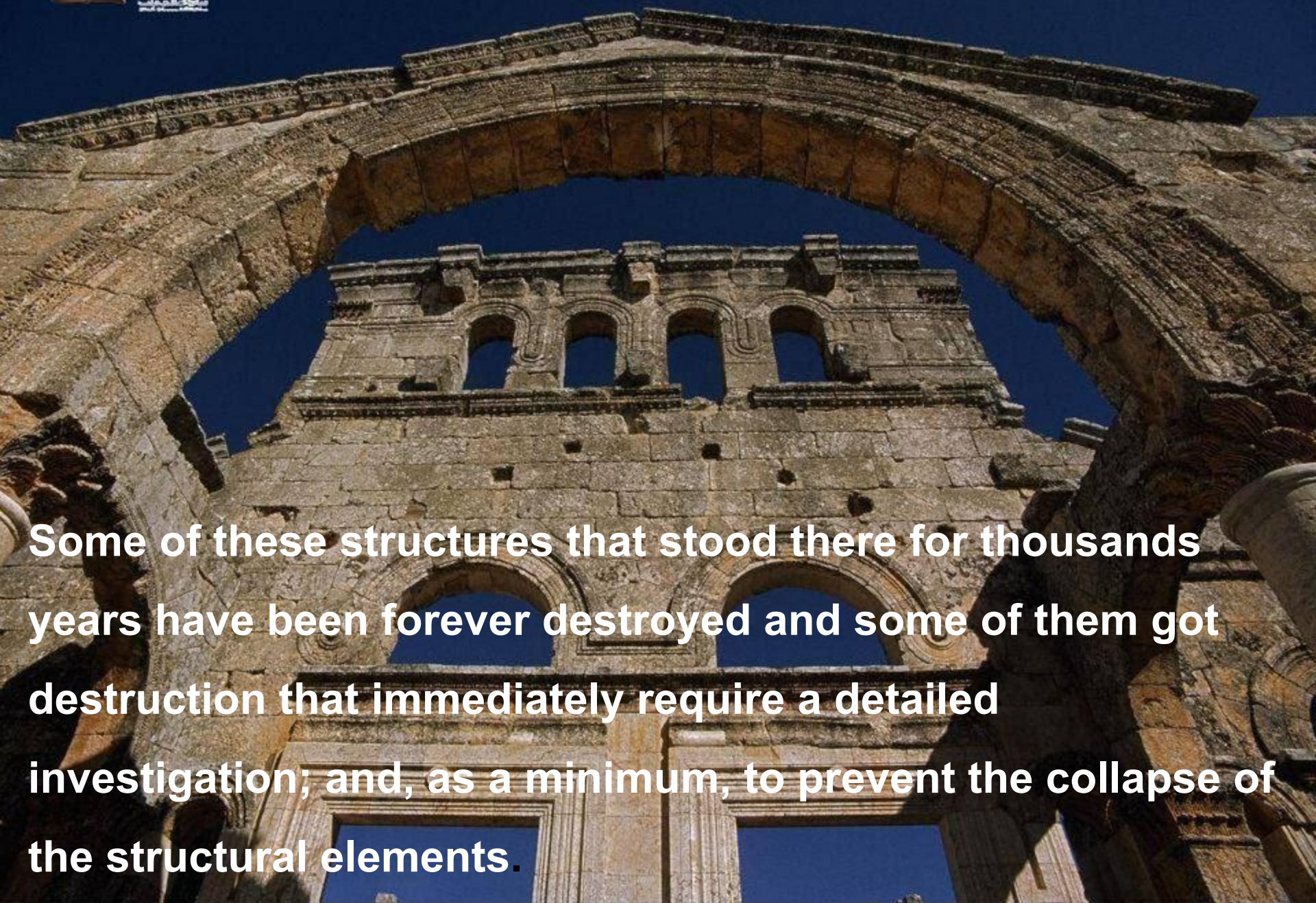
AWWAD LANA

6/17/2019

7

OLYMPIA

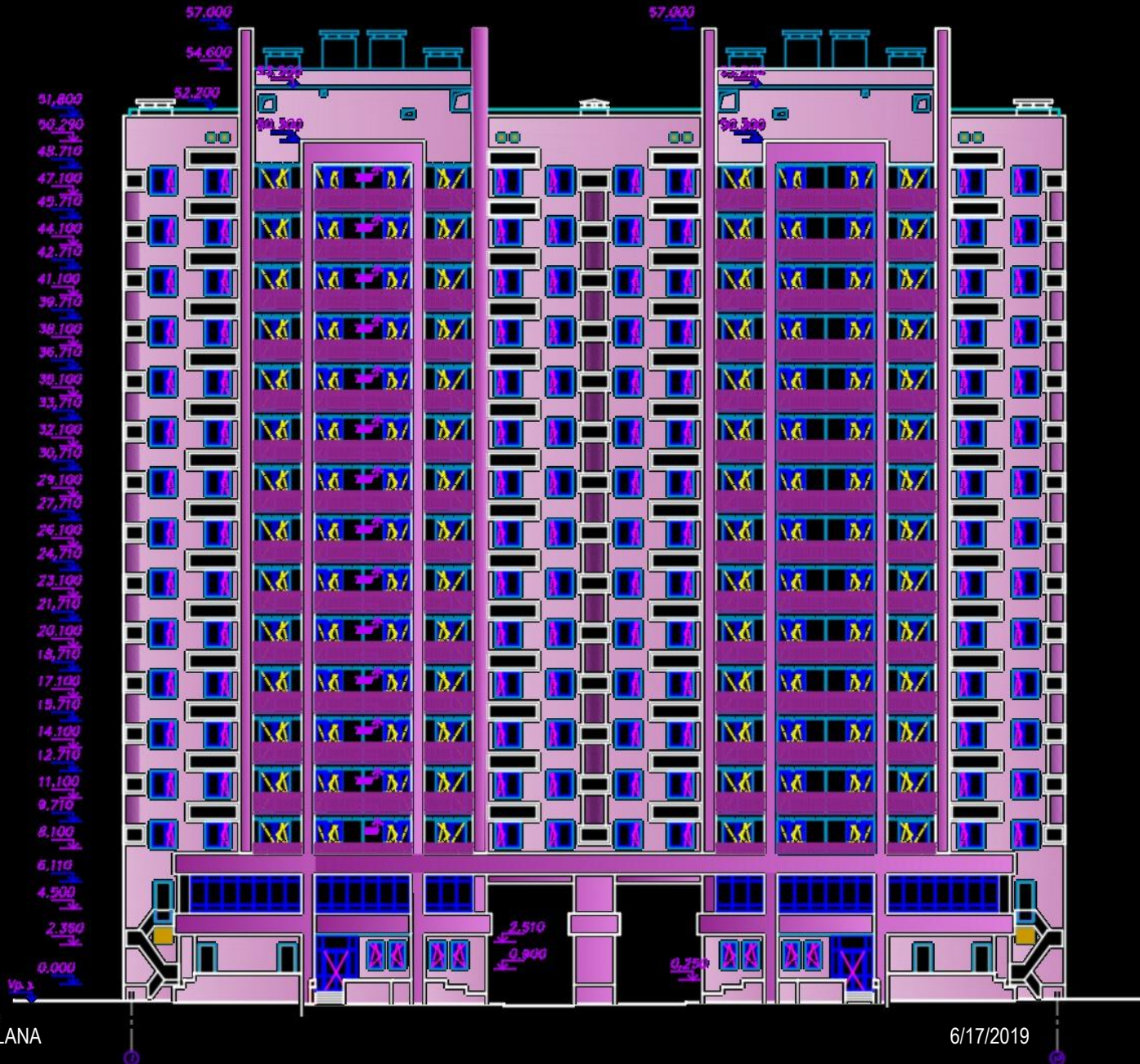




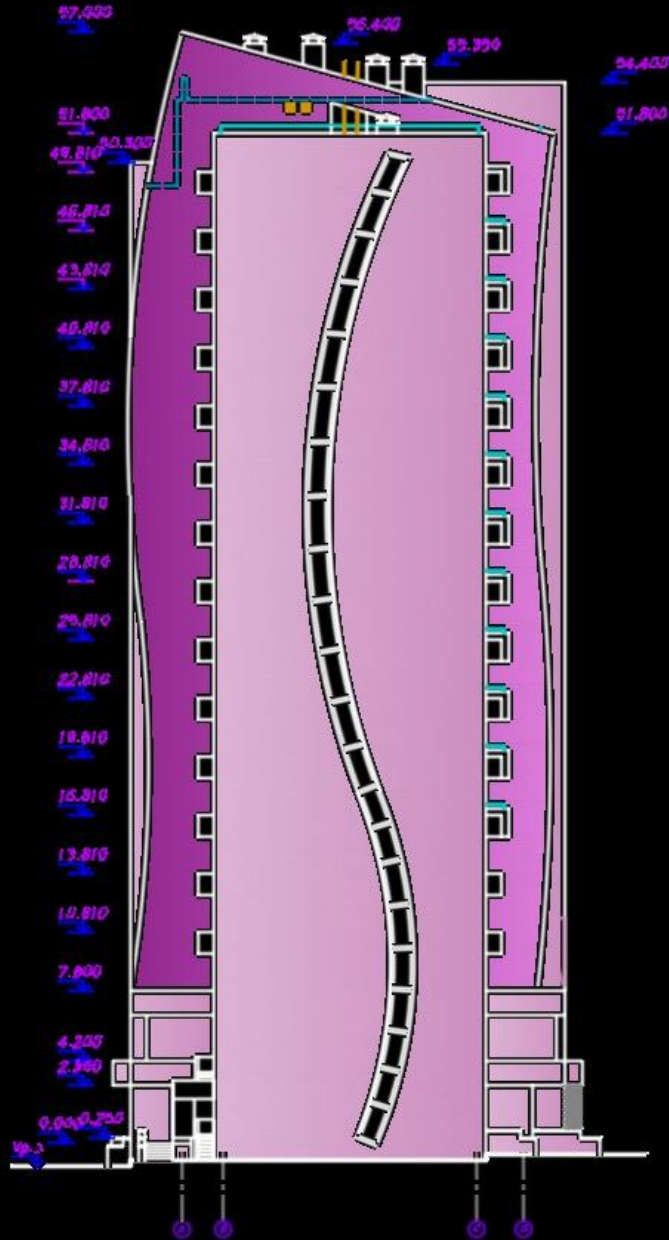
Some of these structures that stood there for thousands years have been forever destroyed and some of them got destruction that immediately require a detailed investigation; and, as a minimum, to prevent the collapse of the structural elements.

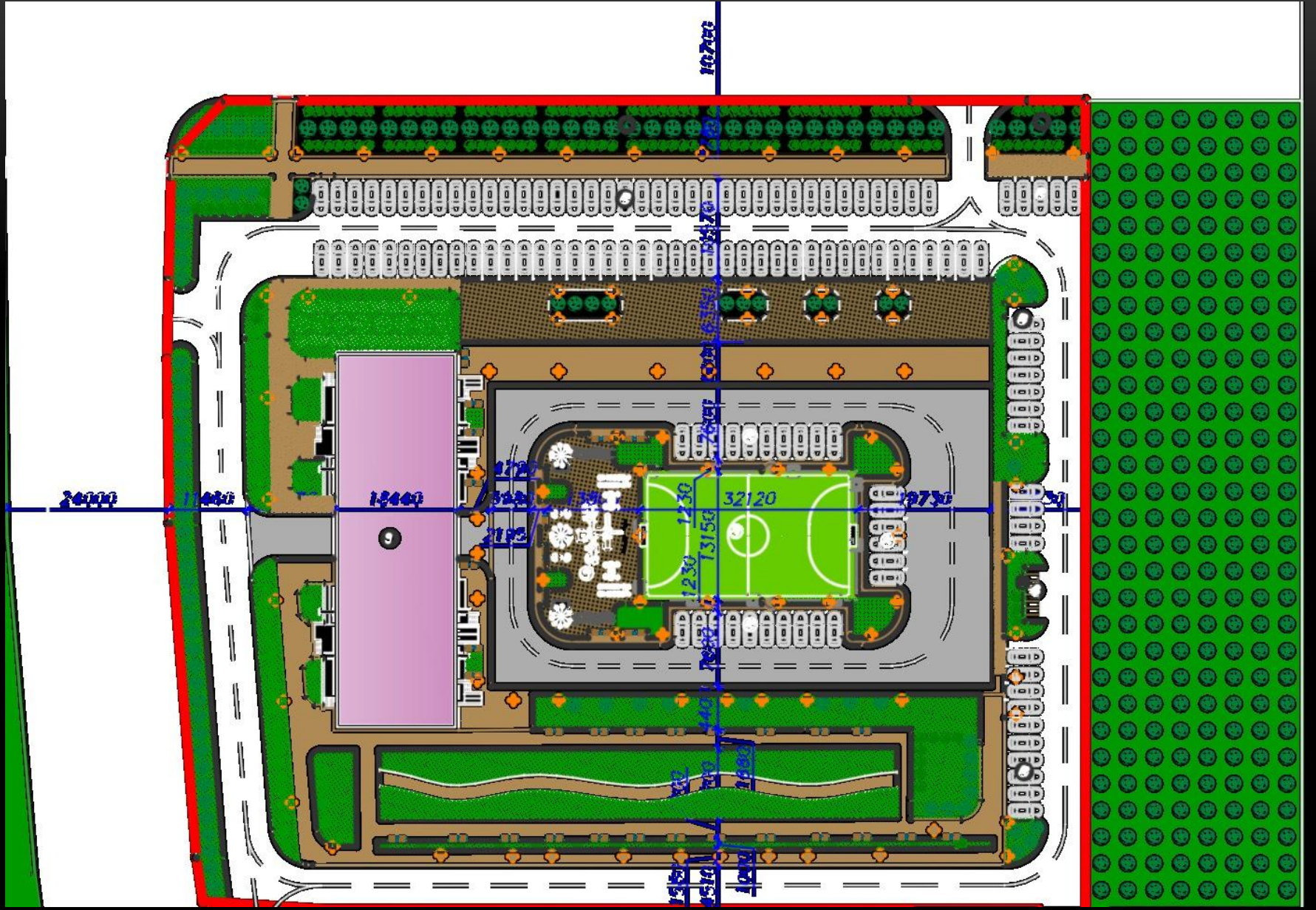


Facade in axes 1-16

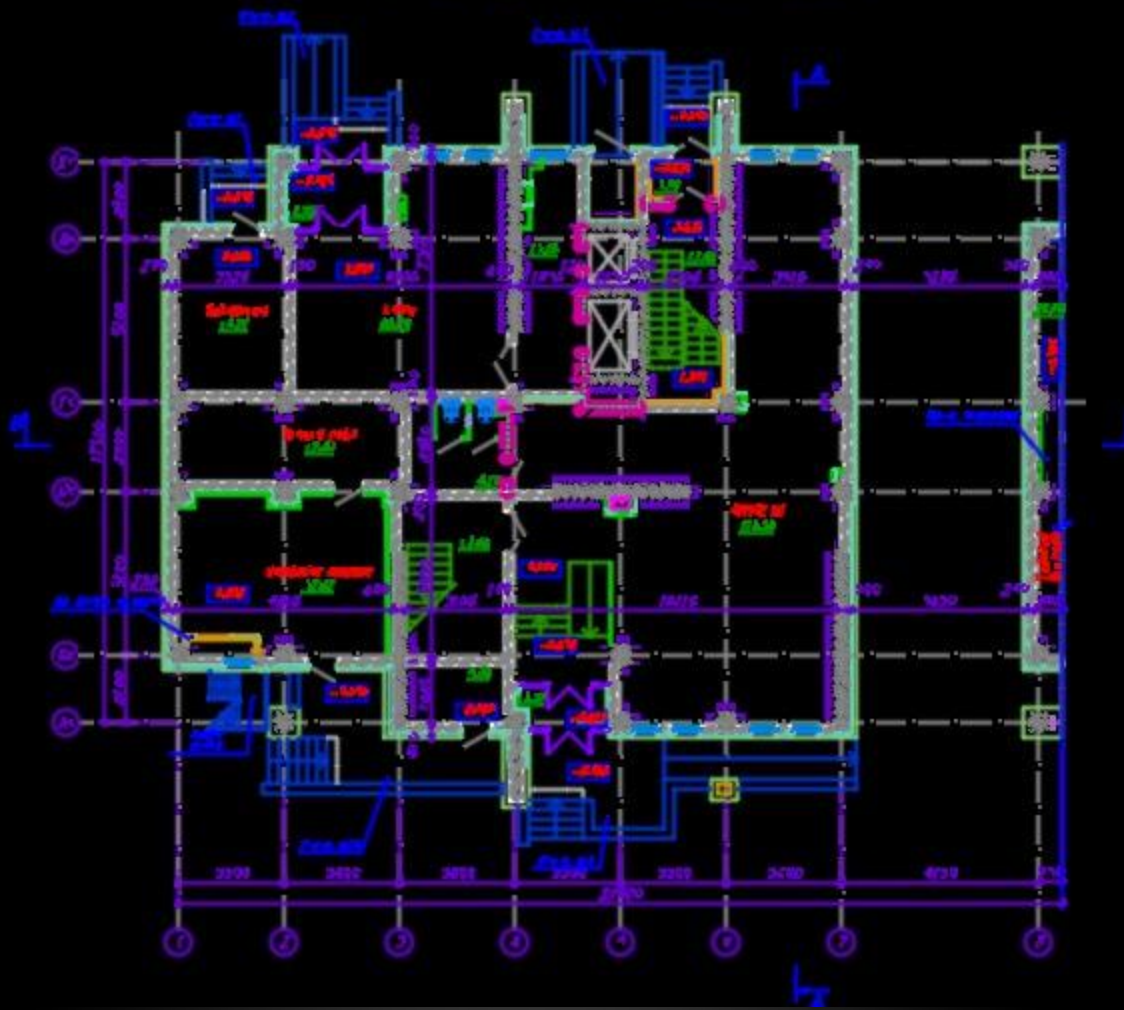


Facade A - E

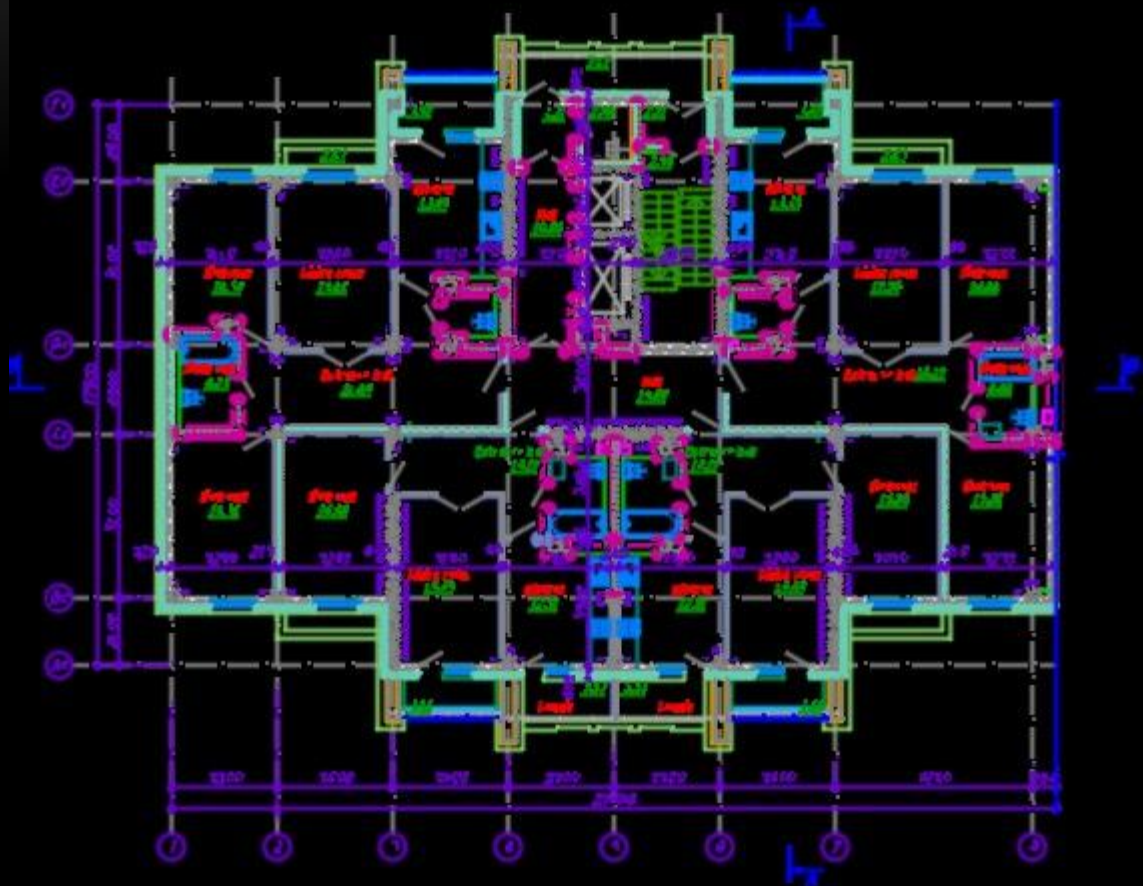




1st floor plan on the level -0,100



Typical floor plan



▽53,5

▽51,3

▽49,1

▽46,1

▽43,1

▽40,1

▽37,1

▽34,1

▽31,1

▽28,1

▽25,1

▽22,1

▽19,1

▽16,1

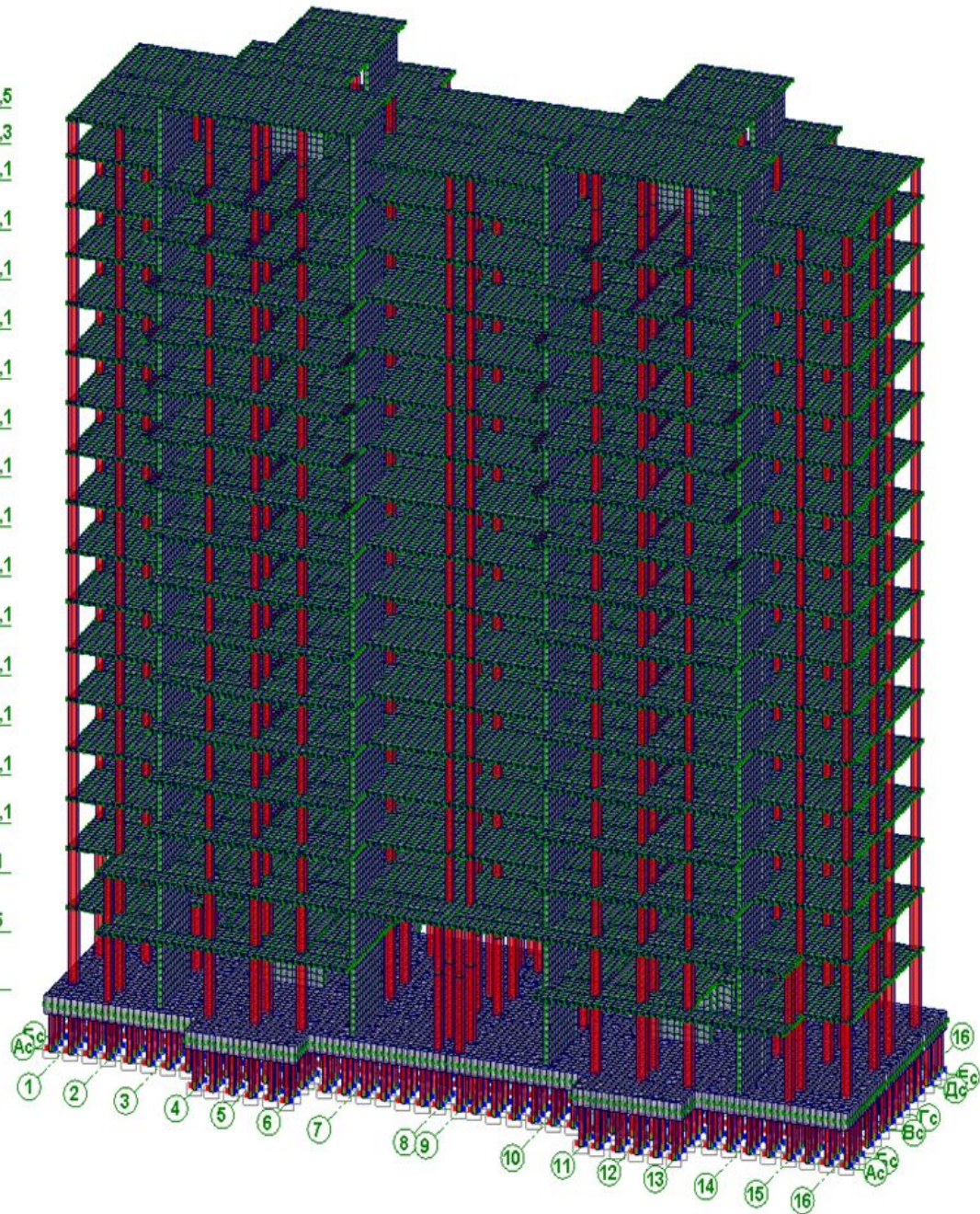
▽13,1

▽10,1

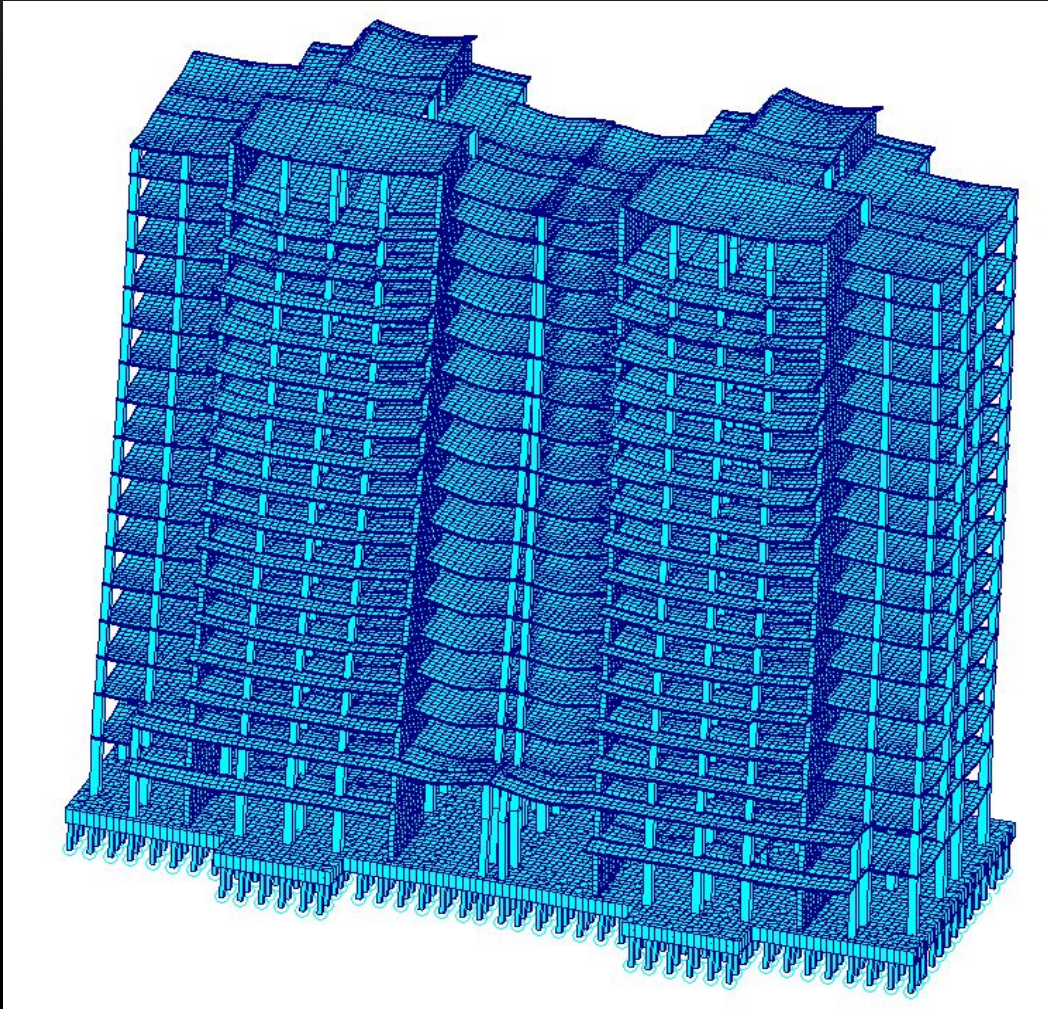
▽7,1

▽3,5

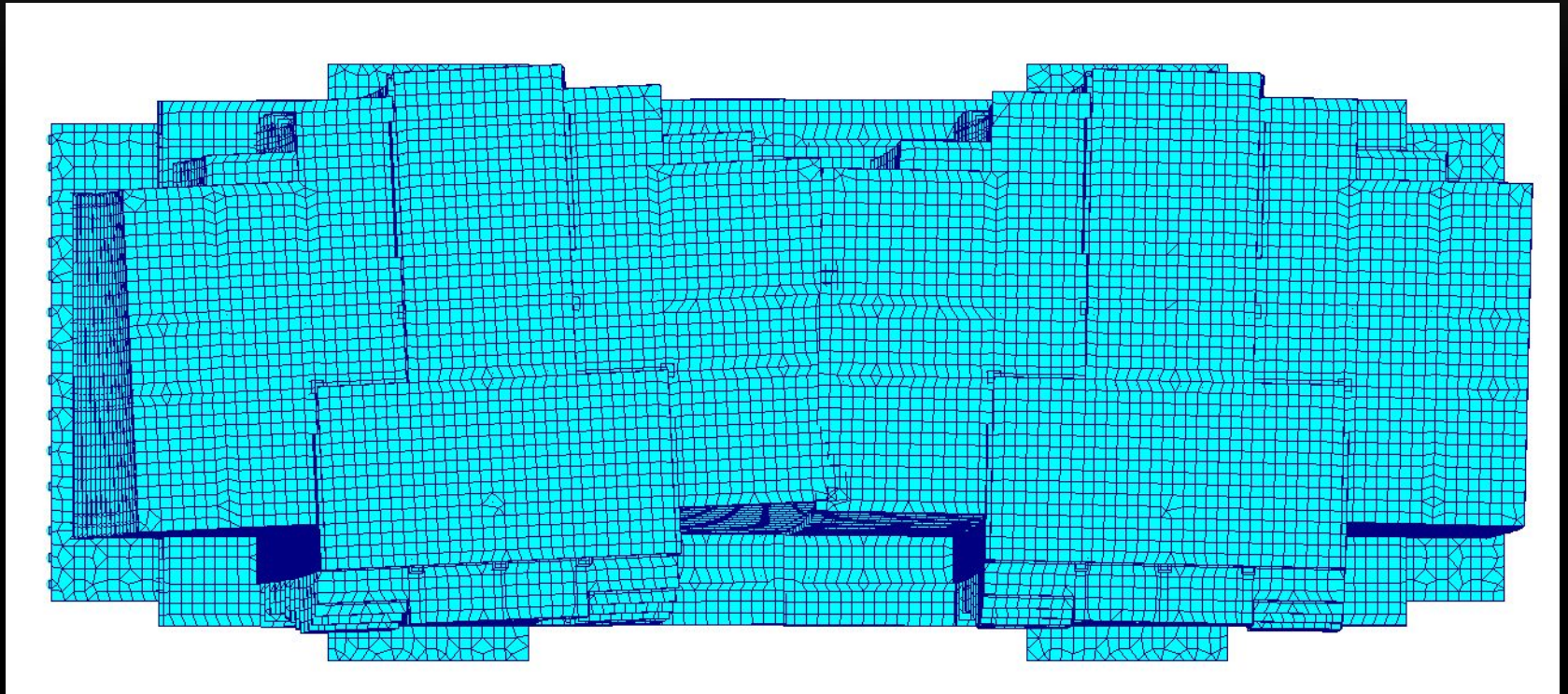
▽0



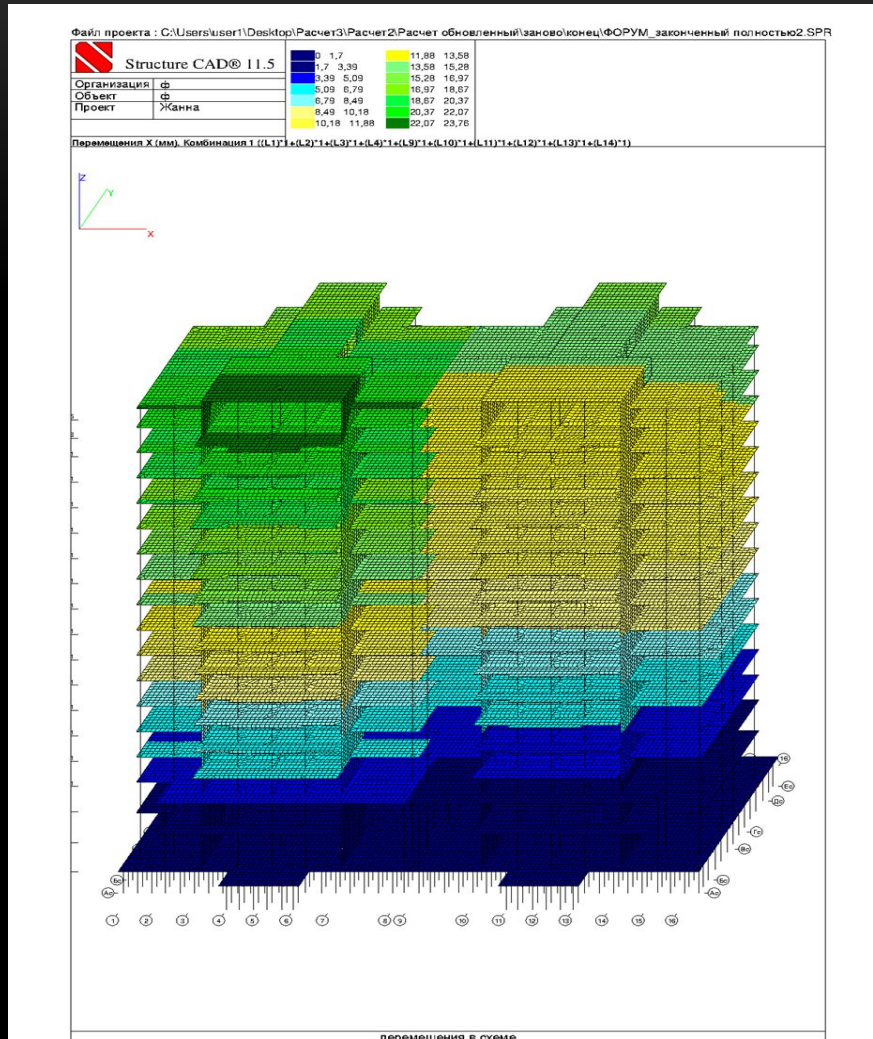
DISPLACEMENTS OF THE SCHEME



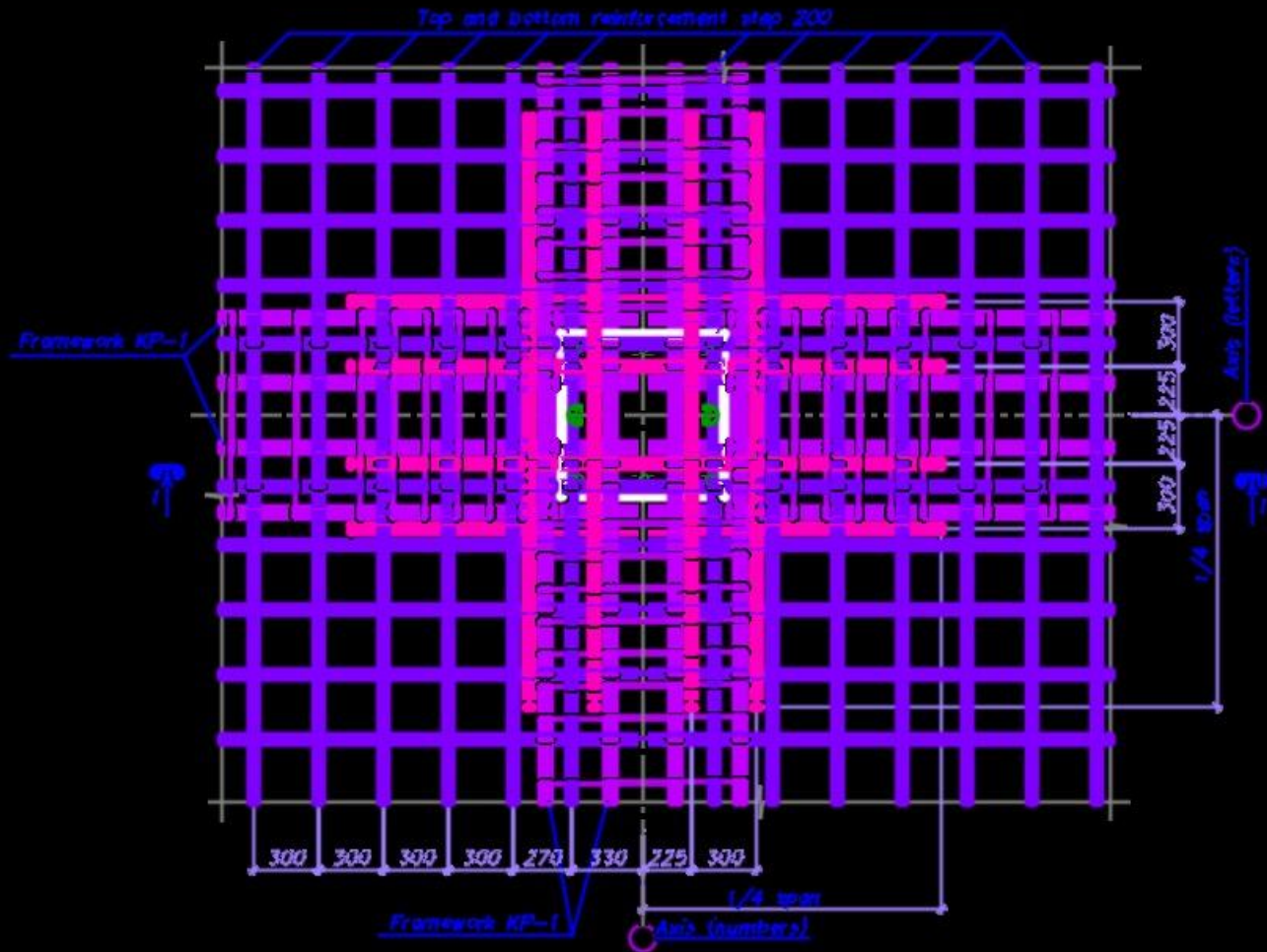
DISPLACEMENTS OF THE SCHEME



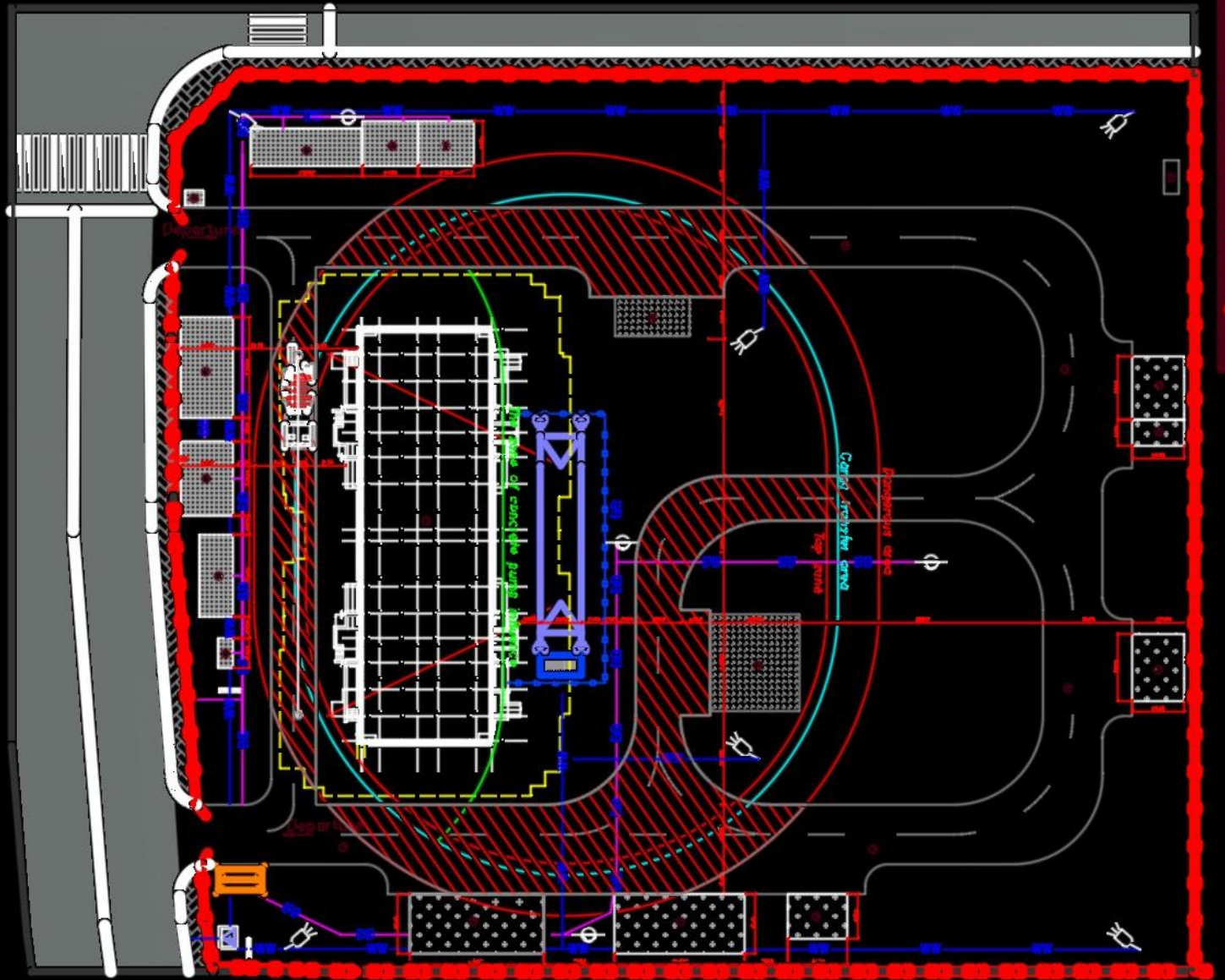
DEFORMATIONS IN THE SCHEME



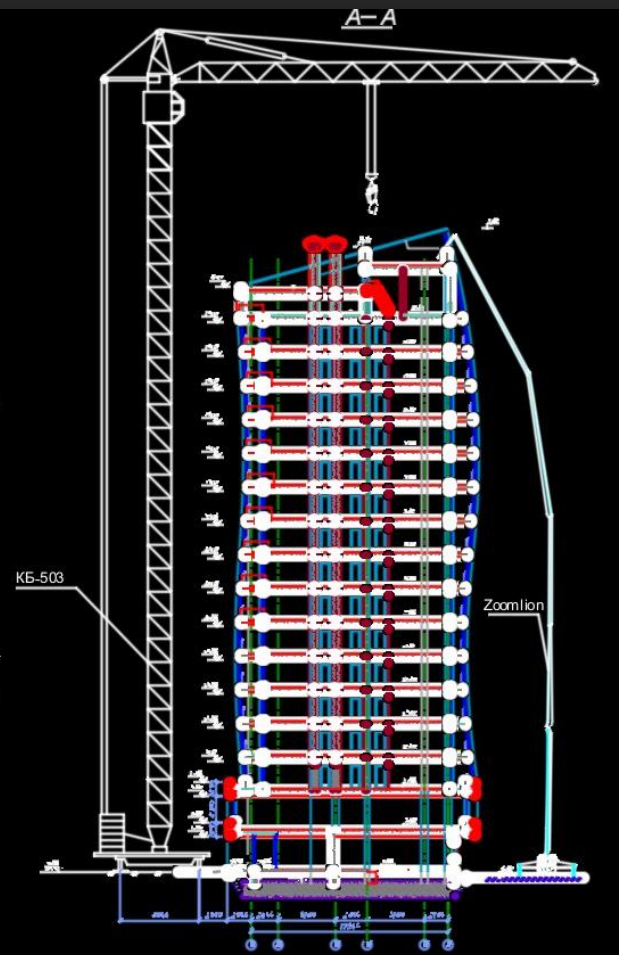
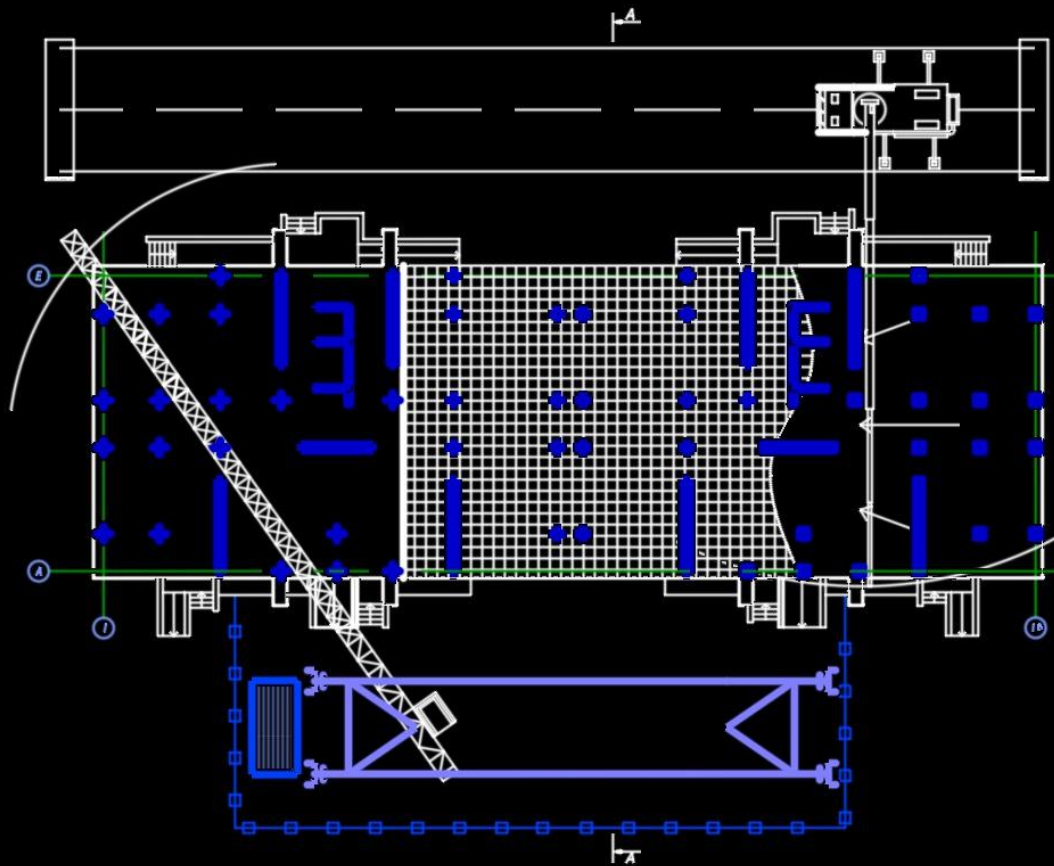
Fragment of the reinforcement of the slab (column 500x500).



Master plan of construction stage



Work scheme on the device of monolithic frame building



The construction scheme of the crane

Thank You

References:

- **Bjerrum, L. and Johannessen, I. J.(1965)**, “Measurement of the compression of a steel pipe to rock due to settlement of the surrounding clay,” Proc. 6th ICSMFE, MONTREAL, vol. 2 ,pp.261-264
- **Clement, F. M. Jr. (1984)**, “Downdrag Negative Skin Friction, and Bitumen coating on prestressed concrete pile,” Ph.D. Thesis submitted to the University of Tulan.
- **Garlanger, J. E. (1974)**, “Measurement of pile downdrag beneath a bridge abutment,” Highway Research Board, Trans. Res. Record No.517, pp.61-69.
- **Auvinet, G. and Hanell, J. (1981)**, “Negative Skin Friction on piles in Mexico Clay, “ Proc. 10th Conf. S. M & F.E. Stockholm, Sweden, Vol.2, pp.65-74.
- **Terzaghi, K. and Peck, R. B.(1948)**, Mechanics in Engineering Practice, John Wiley and Sons, New York.
- **Walker, L. K. and Darvall, P. Lep. (1970)**, “Some Aspects of Dragdown on Piles,” Proc. 2nd South-East Asian Conf.on soil Eng.Singapore, pp.121-173.
- **Leung, C. F., Radhakrishnan, R., and Tan, S. (1991)**, “Performance of precast driven piles in marine clay, “ J. Geotech. Engrg., ASCE,117(4), pp.637 – 657.
- **Indraratna, B., Balasubramaniam., A. S., Phamvan , P. and Wong, Y. K.(1992)**, “Development of negative skin friction on driven piles in soft Bangkok clay,” Can. Geotech. J., 29, pp.393 – 404.
- **Lee, C. Y., (1993)**, “Pile groups under negative skin friction,” J. Geotech. Engrg., ASCE. 119(10), pp.1585 – 1599.
- **Poorooshasb, H. B., Alamgir, M., and Miura, N.(1996)** , “ Negative skin friction on rigid and deformable piles, “ Computer and Geotechnics, 18(2), pp.109 – 126.
- **Shen, W. Y. and The, C. I. (2002)**, “A variational solution for downdrag force analysis of pile groups”, The Intl. J. of Geomechanics 2(1), pp.75-91.
- **Hanna, A. and Sharif, A. (2006)**, “Negative skin friction on single piles in clay subjected to direct and indirect loading,” In Press, Intl. Jour. Of Geomechanics, ASCE.

- **Jean – Louis BRIAUD.(2010)**, “Designing for downdrag on uncoated and bitumen coated piles”, Piling and deep foundations Middle East 2010.
- **Liu J, Gao H, Liu H. 2012** “Finite element analysis of negative skin friction on a single pile”. Acta Geotechnica, March Issue 2012.
- **Trochanis, A. M., Bielak, J., and Christiano, P. (1988)**, “A three Dimensional Nonlinear Study of piles leading to the Development of a Simplified Model,” A Technical Report of Research, The National Science Foundation, Camegie Mellon.
- **Randolph, M. F. (1977)**, “A Theoretical Study of the performance of piles,” Ph.D. Thesis, Cambridge University, Cambridge, England.
- **Randolph, M. F. and Worth, C. P. (1978)**, “Analysis of Deformation of vertically loaded piles,” J.Geotech. Engng. Div, ASCE, Vol. 104, No. GT 12, pp.1465-1488.
- **Scientific Manual, PLAXIS Version 8**, A Two-dimensional finite elements computer program.
- **Mohammad Azizul Hoque.(2006)**, “Coupled consolidation model for negative skin friction on piles in clay layers,” A Thesis in the Department of Building, Civil and Environmental Engineering, Concordia University, Montreal, Quebec, CANADA.
- **Muni Budhu**, “Soil Mechanics and Foundations,” Department of Civil Engineering & Engineering Mechanics University of Arizona, pp. 146 – 148