

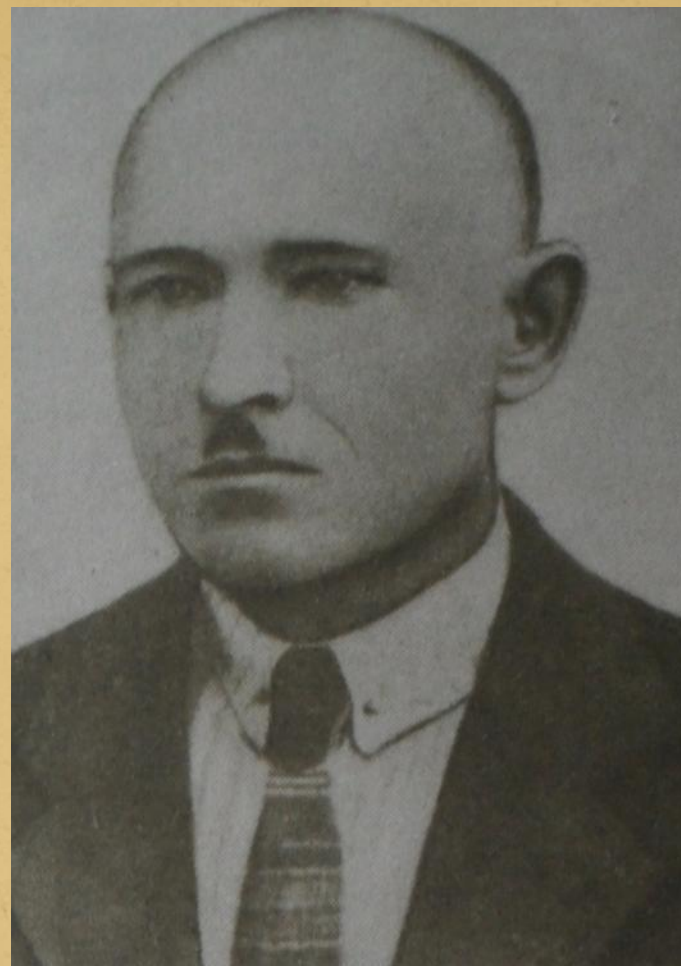
A stylized illustration of a village nestled in a forest. The scene is rendered in shades of green and black. In the foreground, a large, dark green evergreen tree stands on the right. To its left, a cluster of houses with dark roofs and light-colored walls is situated on a grassy slope. A path leads from the bottom left towards the houses. In the background, more trees and a dark, silhouetted hill are visible. The overall style is graphic and minimalist.

ИОСИФ АРХИПОВИЧ ШАБДАРОВ

1898-1937 ий

Ончалза-ян, пүртүсат
Таче мо шот сай чиен:
Пакча пече, түрлө сад
Сывын купш гай ужаргеныт...
Пашаланже эрык тольо —
Чарыше уке нигöат.
Сай шомакым, шошо, ойло,
Ит шупшкеде нигушкат.

ШАБДАР ОСЫП



О. ШАБДАР – МАРИЙ УЧЕНЫЙ,
ПИСАТЕЛЬ, ЛИТЕРАТУРОВЕД