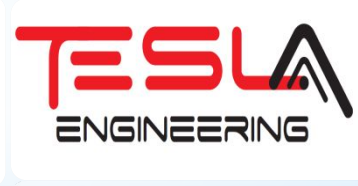


# ENGINEERING GROUP



**TOTAL EMPLOYEE: 100 PEOPLE**



- WASTEWATER TREATMENT
- WATER TREATMENT
- TECHNICAL CONSULTING
- MANUFACTURING
- INSTALLATION
- TECHNICAL SERVICE



## WATERLAND WATER TREATMENT & ENVIRONMENT TECHNOLOGIES

WATERLAND is established in 2007 in İstanbul.

WATERLAND is established with 14 years of experience of the founders and has become an outstanding company in water and wastewater treatment technologies.

# WATERLAND TECHNOLOGIES

Waterland can provide turn-key solutions for;

- Filtration Systems,
- Softener Systems
- Ultrafiltration Systems
- Reverse Osmosis Systems
- EDI Systems
- WCU (Water Compact Units)
- Domestic Wastewater Treatment
- Industrial Wastewater Treatment

by projecting it with expert engineering and technical staff, in order to meet the required water/wastewater quality of plants.

We operate across a wide range of market sectors including:

- Textile Industry
- Paper Industry
- Paint Industry
- Automotive Industry
- Food Industry
- Power Plants
- Chemical Industry
- Mining Industry
- Water Bottling Factories





Water is Our Future  
water | wastewater | chemical

• HOSPITALS



• MILITARY



• INDUSTRY



• HOTELS

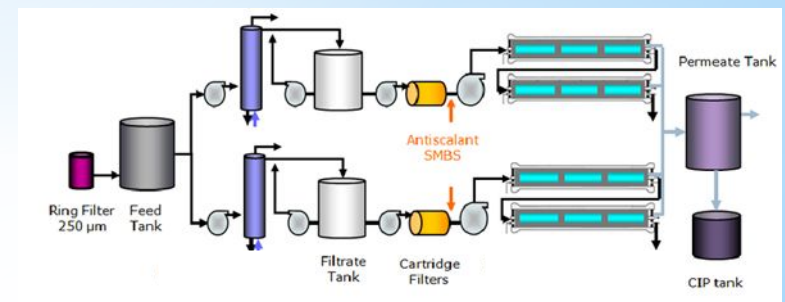


**Location: Zorlu Holding / Taç Perde Bursa**  
 30m<sup>3</sup>/h Sand Filter - 28m<sup>3</sup>/h Ultrafiltration System  
 20m<sup>3</sup>/h Reverse Osmosis System



Parameter	UNIT	RO Feed Water
pH	-	7,0
Conductivity	µS/cm	3120
TSS	mg/L	45

System Integrator:	Waterland
Capacity:	20 m <sup>3</sup> /h
Industry:	Textile Industry
Application:	Process Water
Total Units:	UF + RO System





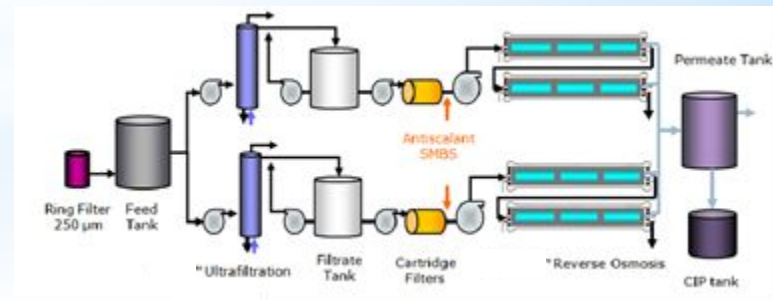
# Location: Azerbaijan – Bakelektro – Mingecevir Power Plant

## Ultrafiltration + RO + EDI System



Parameter	UNIT	RO Feed Water	EDI Product Water
pH	-	7,5	6,0 - 7,0
Conductivity	µS/cm		< 0,5
Turbidity	NTU	< 20	< 1
Silica	ppm	7,2	< 0,002
Sodium	ppm	20,19	< 0,015

System Integrator:	Waterland
Capacity:	660 m3/h
Industry:	Power Plant
Application:	Cooling Tower
Total Units:	UF + RO + EDI System



# Location: Azerbaijan – Bakelektro – Mingecevir Power Plant Industrial Wastewater Treatment Plant



Parameter	UNIT	WWTP Influent	WWTP Effluent
pH	-	6,5 – 9	6,5 – 9
Chloride	ppm	N/A	350
Sulphate	ppm	N/A	500
TSS	ppm	N/A	30
O&G	ppm	N/A	0,05



System Integrator:	Waterland
Capacity:	2 x 40 m3/h
Industry:	Power Plant
Application:	Cooling Tower
Total Units:	Industrial WWTP



# Location: Konya – Seydişehir Municipality - Turkey Domestic Wastewater Treatment Plant



Parameter	UNIT	WWTP Influent	WWTP Effluent
pH	-	6,5 – 9	6,5 – 9
COD	ppm	750	< 80
BOD	ppm	550	< 40
TSS	ppm	350	< 40
TKN	ppm	45	< 15
TP	ppm	8	< 2

System Integrator:	Waterland
Capacity:	15.000m3/day
Industry:	Domestic WW
Application:	Discharge to the channel
Total Units:	Biological Treatment

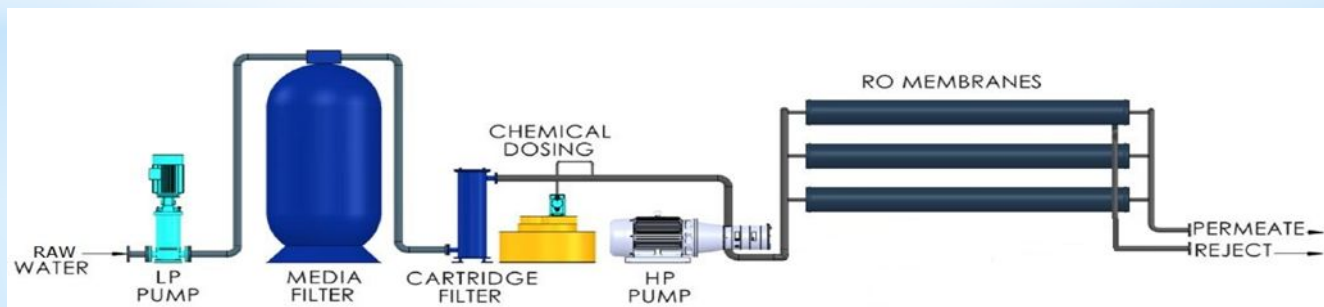
Location: Kazakhstan / Aktobe

# WCU(Water Compact Unit)+ Brackish Water Reverse Osmosis (BWRO) System + ZLD (Zero Liquid Discharge)



Parameter	UNIT	RO Feed Water
pH	-	6,8 – 10,25
Conductivity	µS/cm	3760
TSS	mg/L	9,8
TDS	mg/L	1202

System Integrator:	Waterland
Capacity:	600m <sup>3</sup> /h
Industry:	Mine Industry
Application:	Process Water
Total Units:	RO System + Evaporation





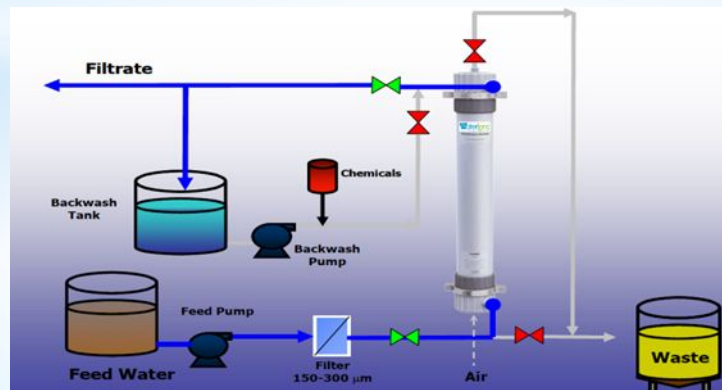
# Location: İstanbul / Nuh Cement Factory

## 17.000m<sup>3</sup>/day Ultrafiltration System



Parameter	UNIT	UF Feed Water
pH	-	7,5-8,5
Conductivity	μS/cm	35.000-60.000
TSS	mg/L	<10
Turbidity	NTU	<10

System Integrator:	Waterland
Capacity:	17.000 m <sup>3</sup> /day
Industry:	Cement Industry
Application:	Process Water
Total Units:	UF System





# CUSTOM DESIGN PROJECTS



## MILITARY TYPE MOBILE TREATMENT SYSTEMS

- Compact Military Type RO Systems
- Easy Installation
- Easy Operation
- Requires Low Energy



# CUSTOM DESIGN PROJECTS

## WCU (WATER COMPACT UNIT)

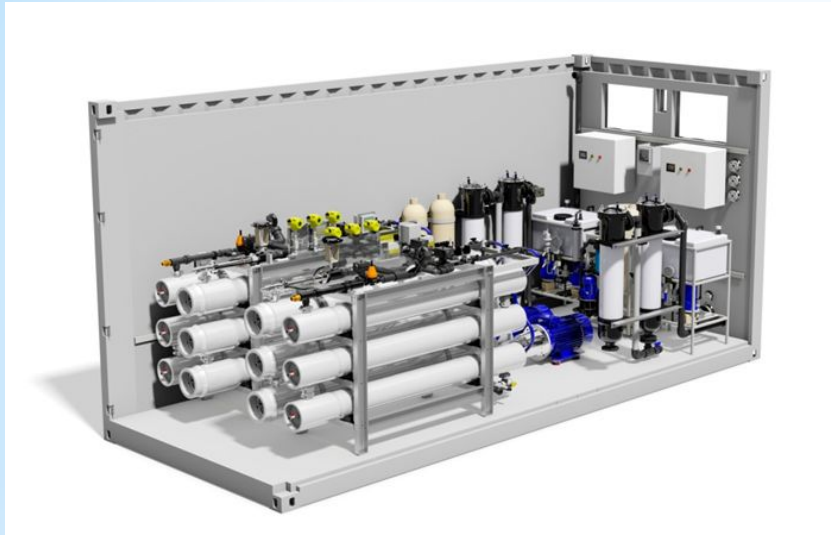


FOR RIVER WATER TREATMENT



# CUSTOM DESIGN PROJECTS

## MOBILE TYPE WATER TREATMENT SYSTEMS





# CUSTOM DESIGN PROJECTS

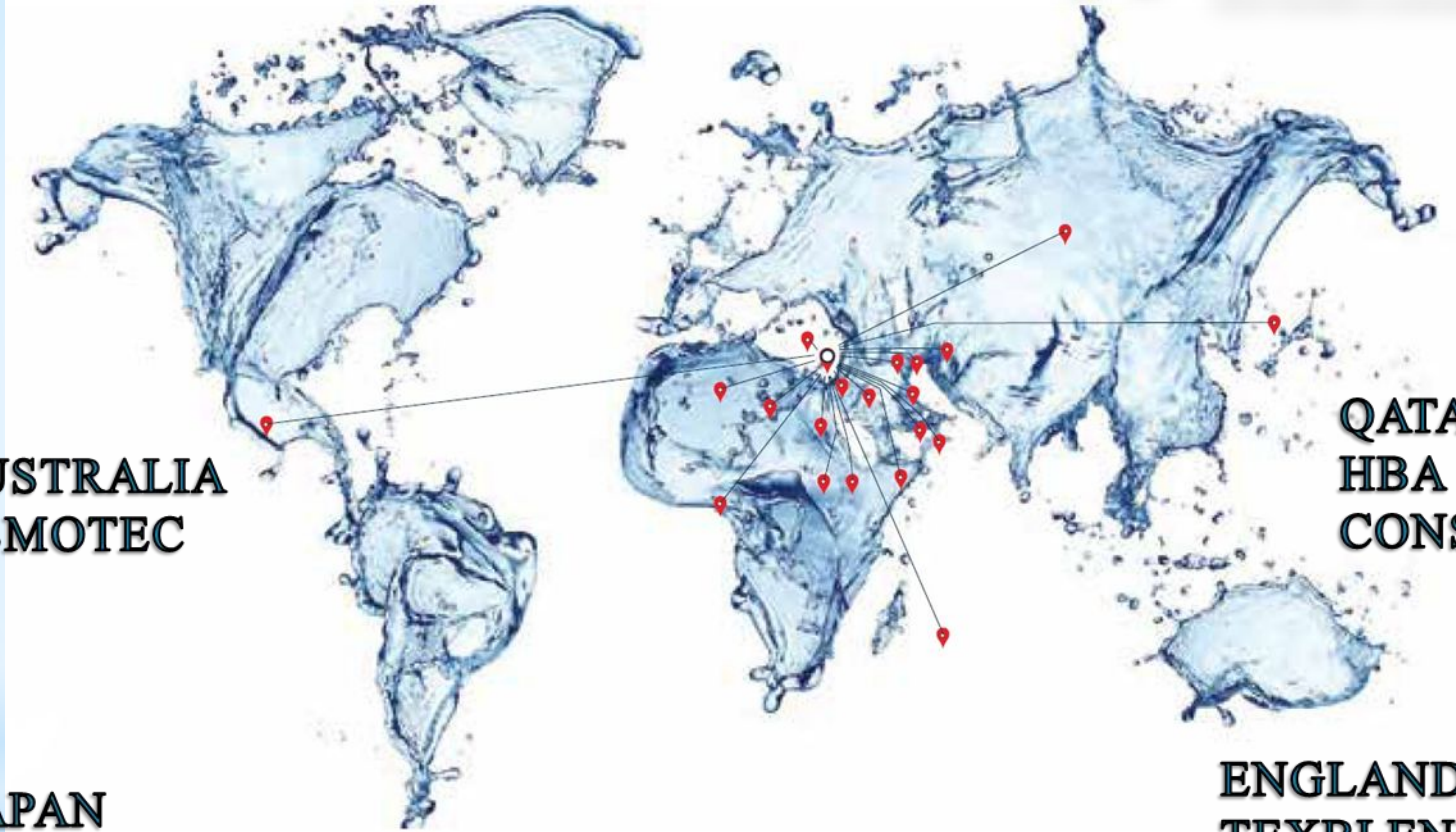


## TRAILER TYPE WATER TREATMENT SYSTEMS



***\*UNDP Project***

# OUR LOCATIONS



**AUSTRALIA  
OSMOTEC**

**QATAR  
HBA  
CONSULTING**

**JAPAN  
LYAN  
INCORPORATED**

**AZERBAIJAN  
ECOLIFE**

**GERMANY  
BIODOS**

**ENGLAND  
TEXBLENDER  
LTD.**



- Factory Automation



- Building Automation

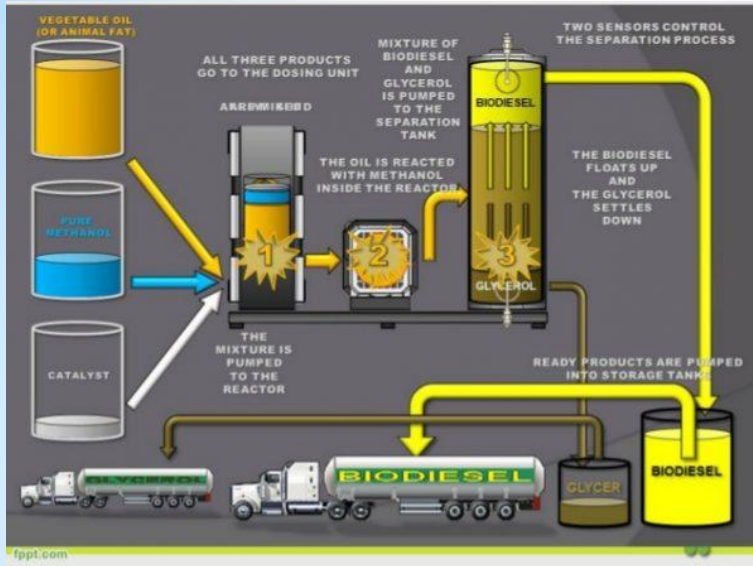


- Smart City Automation

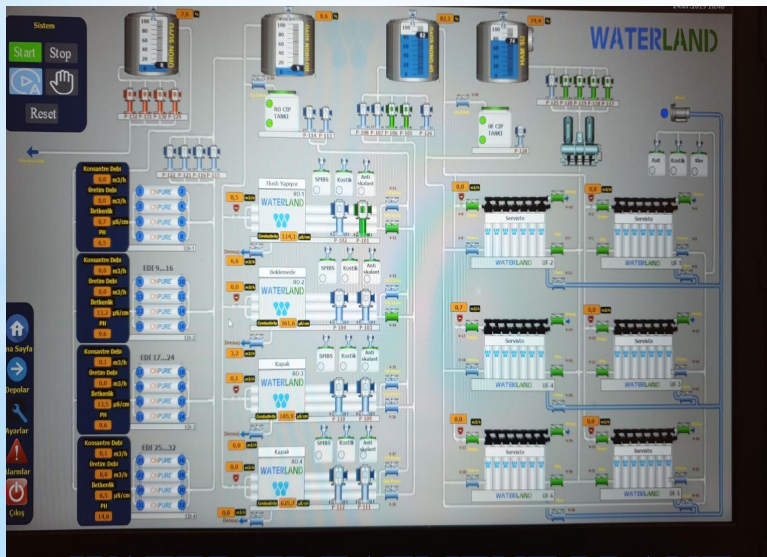




# FACTORY AUTOMATION SCADA SYSTEMS



# INDUSTRY 4.0 AUTOMATION



# WATER TREATMENT PLANT SCADA SYSTEMS



Factory  
Building  
Construction

Road  
Construction

Bridge  
Construction

Residential  
area  
Construction

Landscape  
Projects





# OUR APPLIED WORKS



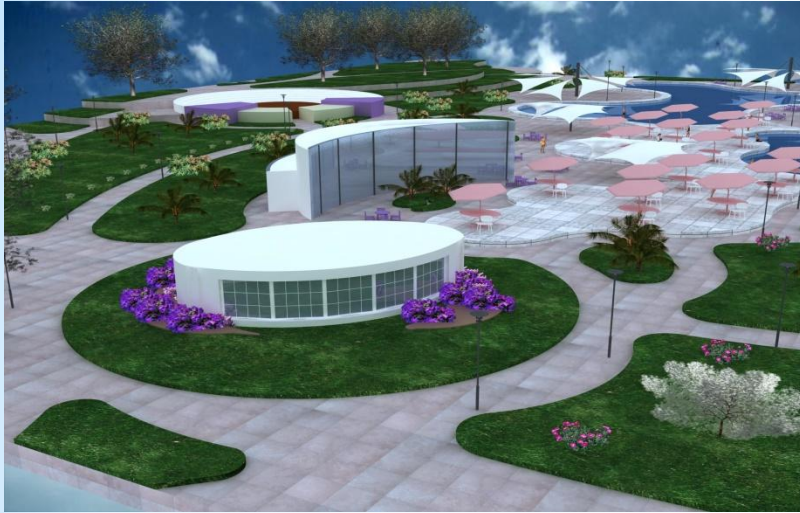
## BRIDGE CONSTRUCTION

## ROAD CONSTRUCTION





# LANDSCAPE APPLICATIONS



# CORPORATE BUILDING PARKS

# URBAN PARKS



## PAVEMENT/ ROAD CONSTRUCTION





# AUTOBAN LIGHTNING/SIGNALIZATION APPLICATIONS





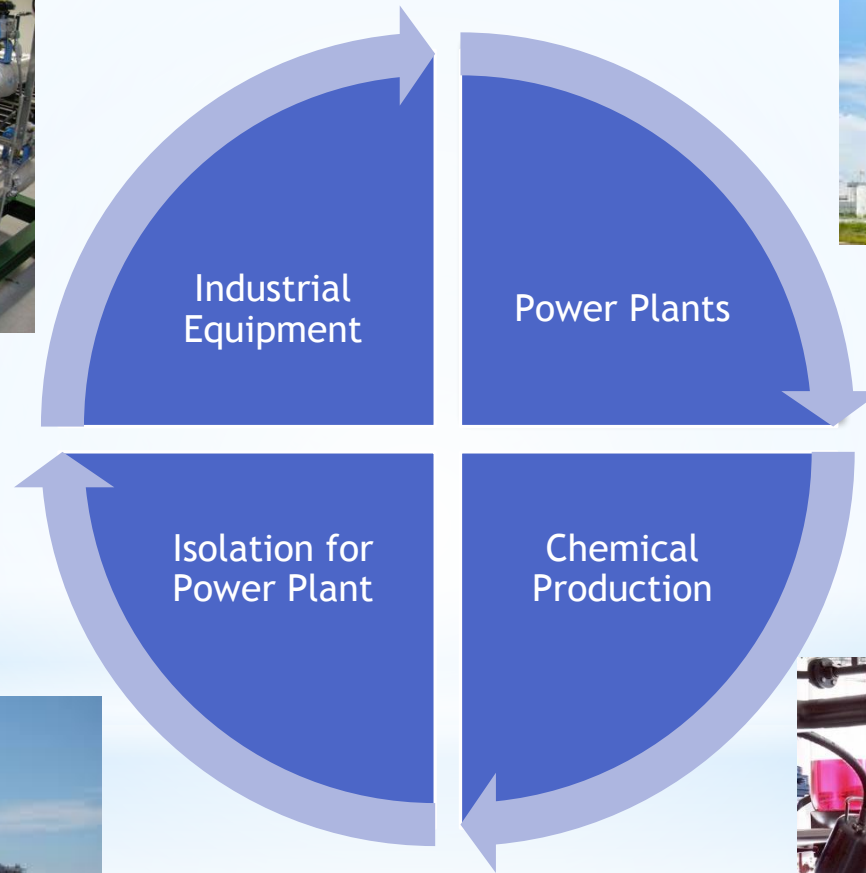
# GREENCON GREENHOUSE SYSTEMS



## SOILLESS AGRICULTURE APPLICATIONS



# TESLA ENGINEERING







20170102

- Microsoll Water Technologies Solutions is an Austrian based European equipment manufacturing company.
- Microsoll has a wide range of water and wastewater treatment equipments.



Microsoll RO Membranes



Microfiber FRP Tanks



Microsoll Cartridge Filters

Microsoll  
UF Module







Microsoll Mobile RO Systems



Microsoll CIP Units



Inn Automatic Self-Cleaning Filter



Microsoll MPS/MPV High Pressure Pumps



Micropump



Microfiber Pressure Vessels



Microsoll Dosage Pumps