

The sights of London

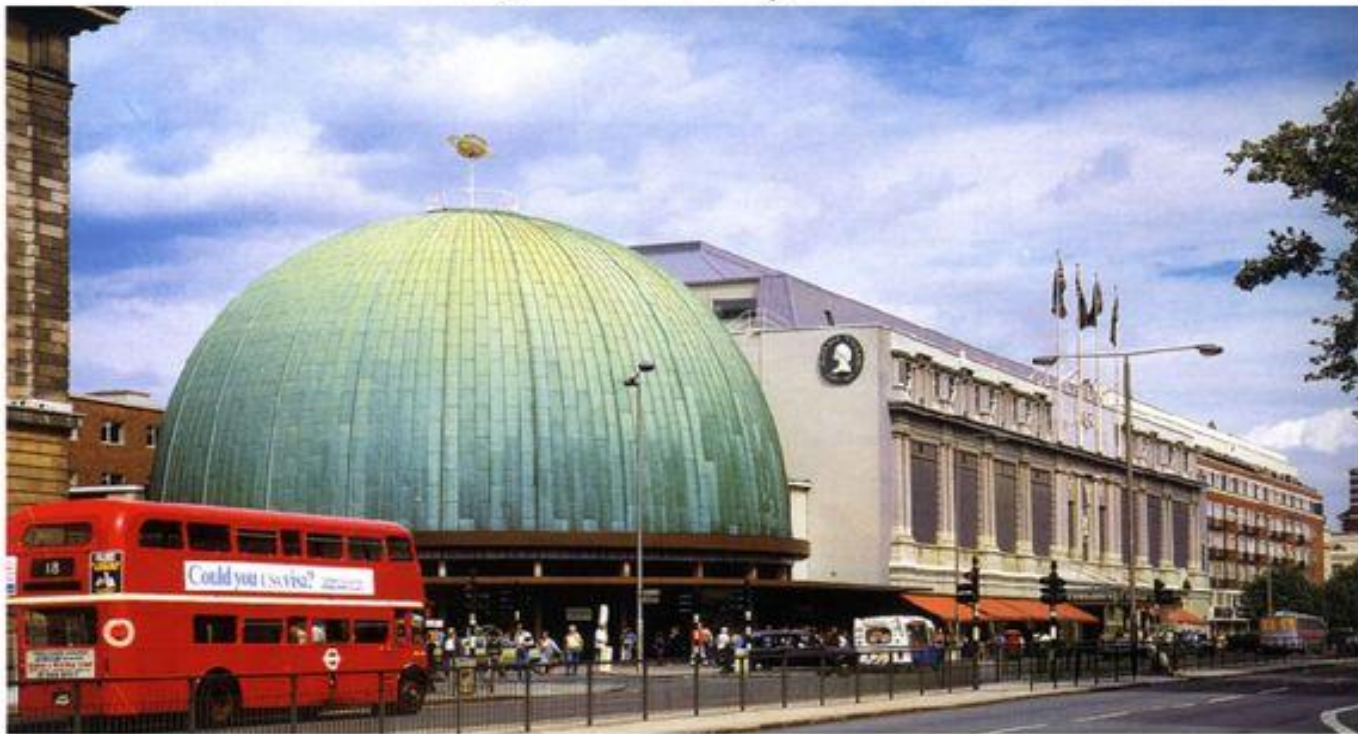


MADAME TUSSAUD'S MUSEUM



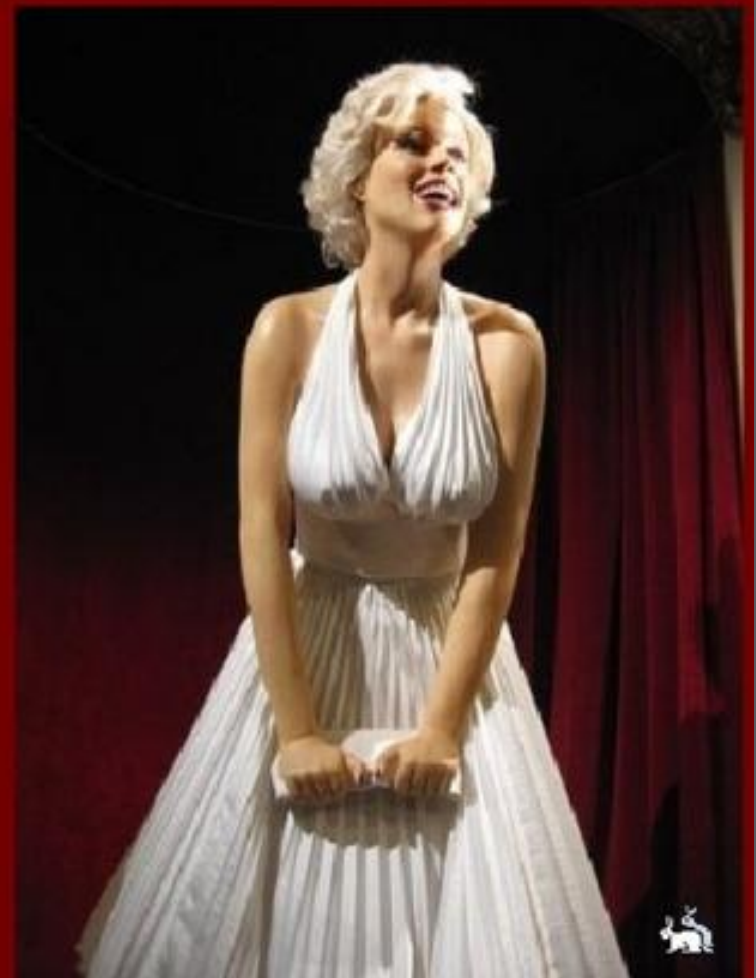
MADAME TUSSAUD'S MUSEUM

The museum is situated in Marylebone Road, not far from the street which is famous as the home of the first great detective in fiction, Conan Doyle's Sherlock Holmes.

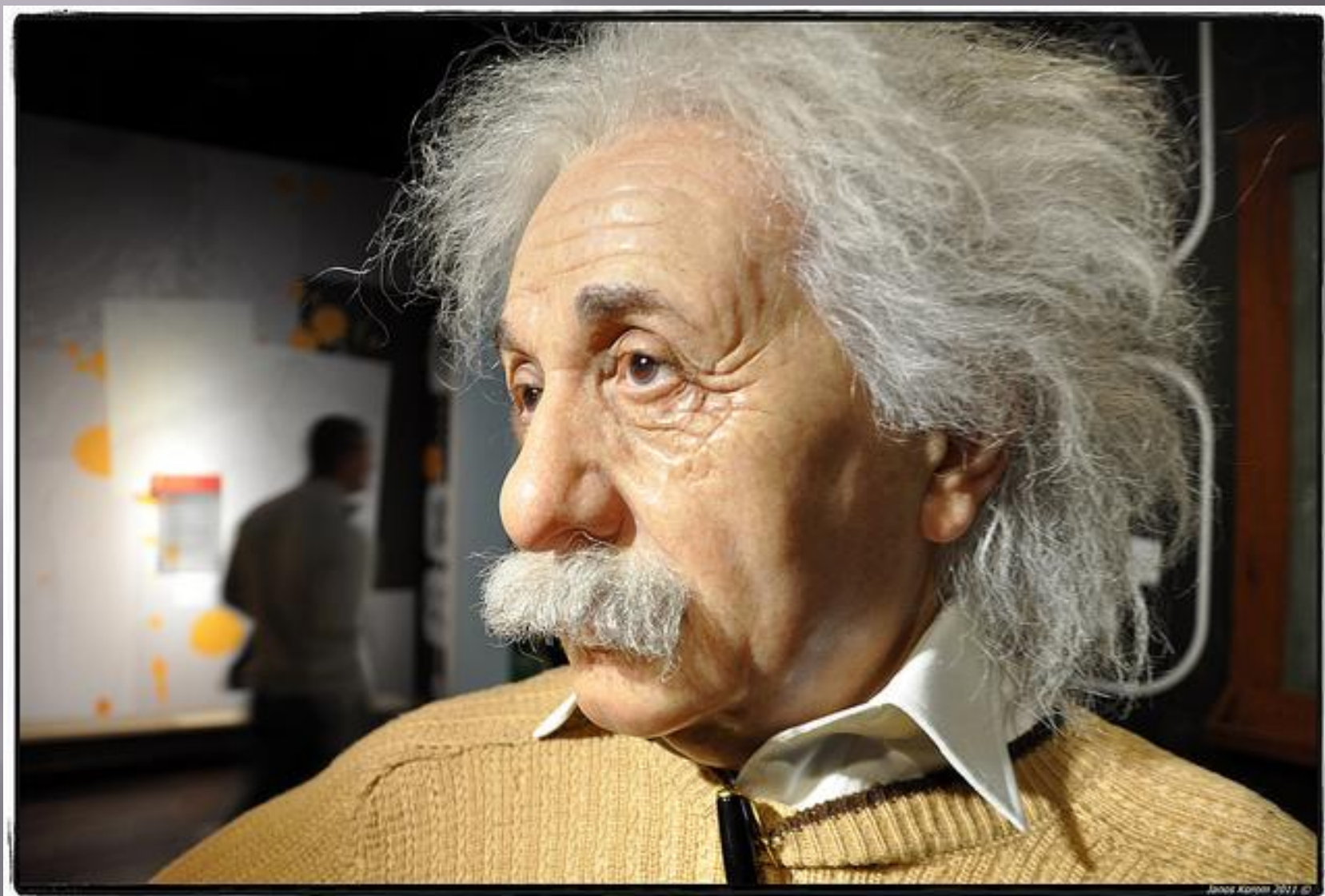




In the Madame Tussauds Museum more than 400 wax figures, or portraits, how they are called by museum workers, are exhibited. They look like alive and it is even difficult to the visitors to believe they are not alive.













FACTS ABOUT MADAM E TUSSAUDS MUSEUM

- ▣ Madame Tussauds Wax Museum was founded by Marie Tussaud, a native of Strasbourgh, France. She learned the art of sculpting from her mother's employer, Dr. Philippe Curtius, a physician skilled in the art of wax modeling.
- ▣ Young Marie's first sculpture was Francois Voltaire. She made it at the tender age of 16.
- ▣ During the French Revolution, Madame Tussauds was imprisoned. During this time, she made death masks of executed nobles.
- ▣ It takes six months, more than 250 precise measurements and photographs, 2,400 lbs of wax and \$45,000 to make each of Madame Tussaud's wax portraits.

FACTS ABOUT MADAM E TUSSAUDS MUSEUM

- ▣ The first overseas branch of Madame Tussauds is in Amsterdam. It opened in 1970.
- ▣ . There are two maintenance teams that check each figure daily before the museum opens.
- ▣ All portraits displayed in Madame Tussauds have their hair washed and make-up retouched regularly.
- ▣ Each subject is invited for a seating to be able to get the right body measurements. However, if the subject is a historical figure or has already passed away, a team of researchers will check and dig on hundreds of pictures and get the measurements from there.

Abbey Road street



History

- The Abbey National Building Society (now Santander UK) was founded in 1874 as The Abbey Road & St John's Wood Permanent Benefit Building Society in a Baptist church on Abbey Road.
- The Beatles' album, *Abbey Road*, features the Beatles walking across the northwestern zebra crossing on the intersection of Abbey Road and Grove End Road.
- EMI's Abbey Road Studios are located at the south-eastern end, at 3 Abbey Road, St John's Wood. The Beatles and many other famous popular music performers have recorded at this studio, and The Beatles named their last studio LP after this street. The album's cover photograph shows the four group members walking across the zebra crossing just outside the studio entrance. As a result of its association with The Beatles, since 1969 this part of Abbey Road has been featured on the London tourism circuit. In December 2010 the crossing was given Grade II Listed Building status by English Heritage.
- The zebra crossing featured on the Beatles cover, as well as the crossing directly north of it, have become popular photo-opportunity areas, despite the road still being a busy thoroughfare for traffic. The Beatles album cover has been parodied many times over the years on the crossing.

Westminster Abbey



Westminster Abbey

Westminster Abbey is a Gothic church in London that is the traditional place of coronation and burial for English monarchs .

Located next to the Houses of Parliament in the heart of London .



Westminster Abbey

- ▣ 1. Westminster Abbey was formed by Benedictine monks during “the middle of the tenth century, establishing a tradition of daily worship which continues to this day.” Specifically, the first Westminster Abbey was established in 960.
- ▣ 2. The current Westminster Abbey was started by Henry III in 1245 and is “one of the most important Gothic buildings in the country, with the medieval shrine of an Anglo-Saxon saint still at its heart.”
- ▣ 3. The official name for Westminster Abbey is the Collegiate Church of St Peter at Westminster. However, the abbey doesn’t operate like a regular church reporting to the hierarchy within the Church of England. Around 1560, the abbey was designated with a special “Royal Peculiar” – which is a church responsible directly to the Sovereign.
- ▣ 4. Westminster Abbey has been the coronation church for the British Monarch since 1066. In fact, 39 coronations have taken place at Westminster Abbey with the most recent on 2 June 1953. This coronation was for our current and soon to be the longest-serving monarch – her Majesty Queen Elizabeth II, who is the eldest daughter of King George VI and Queen Elizabeth.

Abbey



5. Seventeen royal weddings have taken place at Westminster Abbey with the most recent on 29 April 2011. This was the royal wedding of Prince William of Wales now Duke of Cambridge, who is the eldest son of Charles, Prince of Wales and Diana, Princess of Wales. He married Miss Catherine Middleton now Duchess of Cambridge.

Westminster Abbey

- ▣ 6. Over 3,300 people have been buried or commemorated at Westminster Abbey. This includes seventeen British monarchs including King Henry V and all the Tudors except for Henry VIII. Other notable people buried at Westminster Abbey include Isaac Newton, Edw 7. During the Second World War, about “60,000 sandbags were used to protect immoveable royal and medieval tombs. The Coronation Chair was sent for safety to Gloucester Cathedral and the Coronation Stone was buried secretly within the Abbey.”
- ▣ 8. The Abbey’s ten bells were overhauled in 1971 and “are rung for major church festivals, saints’ days, Royal and Abbey anniversaries, civic events and for special services.”

Westminster Abbey



9. The architecture within [Westminster Abbey](#) is beyond spectacular, and one of the most magnificent areas is the Henry VII Chapel commonly referred to as the Lady chapel. The pendant fan vault ceiling is beyond beautiful and definitely must be seen in person.



*Thank you for
your attention!*