

# Nike (IDS) Stow Classroom Training



# AGENDA

---

- Station/Area Readiness.
  - Equipment walkthrough
  - Rack Lights
  
- Body Mechanics
  - Do's
  - Don'ts
  - Key Technique's
  
- Quality
  - Multiple Events
  - Stow Not Scan
  - Magenta Light
  - Blocking Stow
  - MasterPack and MultiPack
  - GOLDEN RULES

**Station/Area Readiness**

# IDS Equipment



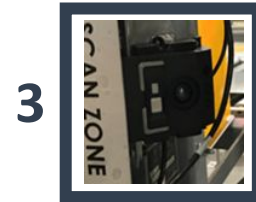
## Projector

- This will light, in purple, certain bins on the Pod to notify the stower that they should not stow their current scanned item into those selected bins in order to avoid bin violations



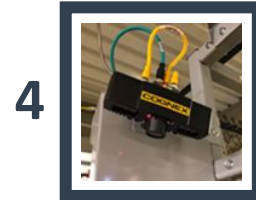
## RGB Camera

- This is a camera that takes pictures in color. It is located overhead and takes a top down picture of the Pod face



## ODS Camera

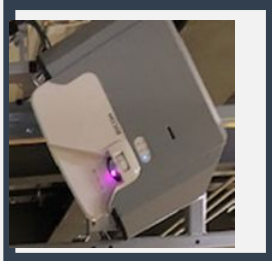
- 2 x ODS cameras. One is located at the bottom of the station and takes a picture of the bottom half of the Pod. The other camera is located at the top of the station and takes a picture of the top half of the Pod.



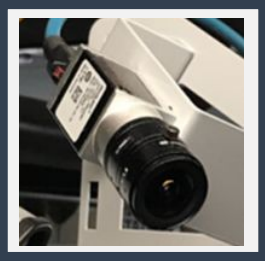
## Cognex

- This is the primary device used to scan items. The associate can use the hand held scanner for difficult barcodes

# IDS Equipment



Projector



RGB Camera

Videos

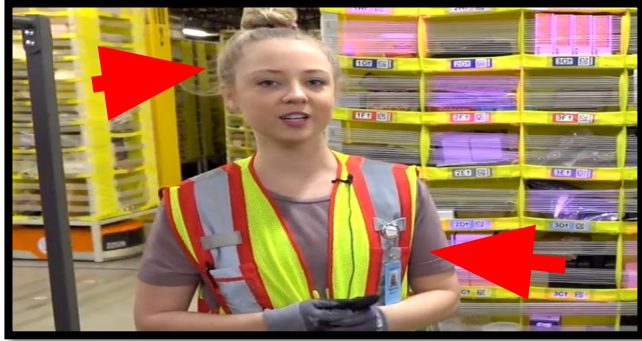


ODS Camera

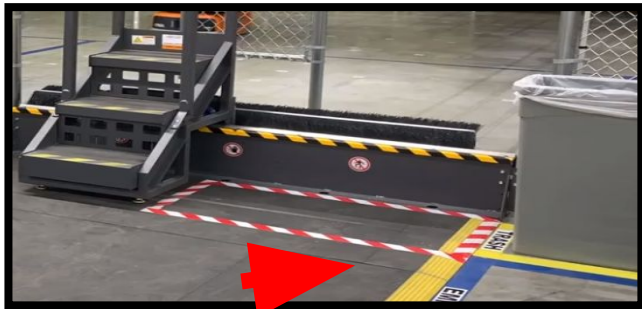
Videos



## Pre Work Checks



1. Check you have no loose hair or clothing and use arm bands for badges.



2. Check everything is in the correct 5S locations

3. Check the station is clear of debris



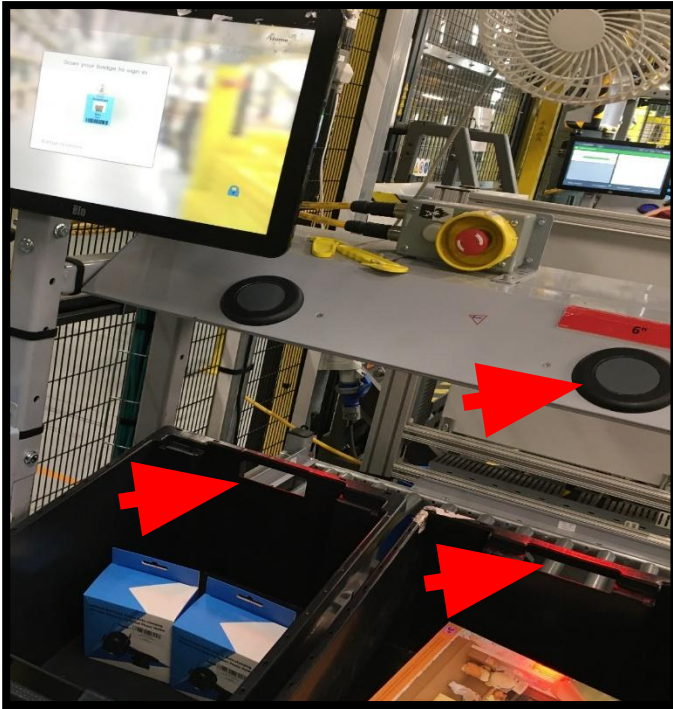
4. Check the Cognex and hand scanner are working

5. Check that the 3 cameras are not covered/blocked

6. Check the projector has nothing covering it.



7. Fully open the gate and check the sticker is fully showing.



8. Check the Autorack scanners are all working on the station.

9. Check you have a full station of totes.

10. Check there is enough space between the front and back totes for the scanner to read it.

11. After you have logged in check that the rack lights have changed to blue.

## Rack Lights

---



The blue button indicates a tote is now staged and assigned into your station.



The green button indicates the tote is now active because last item was scanned from this tote.



The red button indicates that there is a problem with this tote. (eg. Empty tote).



# Body Mechanics

# Body Mechanics – Stowing (Do's)

## Eagle Punch



1. Square Up w/ Item in One Hand
2. Extend Arm Straight Out and Place Item in Bin
3. Pull Arm Straight Out

## Hadouken



1. Square Up w/ Item in Both Hands
2. Extend Both Arms Straight Out and Place Item in Bin
3. Pull Both Arms Straight Out

## Macarena



1. Square Up and Extend One Arm out and Place it on the Bin Straps
2. With the Item in the Other Hand Extend that Arm Straight Out and Place Item in Bin
3. Pull the Arm Holding the Bin Straps Straight Out while Keeping the Other Hand in the Bin
4. Pull the Other Arm Straight Out

# Body Mechanics – Stowing (Don'ts)

## Hand Stays in Bin



- Never keep the hand in the bin when stowing multiple items in the Pod
- This can confuse the computer as to when an item was stowed
- Always pull the hand/arm out after each stow

## Holding Mult. Items



- Never hold another item when stowing
- The cognex might accidentally scan the item in your other hand while you are stowing thus prematurely completing the stow process
- Use One Piece Flow

## Scanning Item in Bin



- Never use the hand scanner to scan the item while it is in the bin
- Since the item was put in the bin prior to the scan, this will confuse the computer into thinking the item was part of the previous stow
- Always use the cognex

## Double Scan

- Avoid scanning the item more than once
- Scanning the item again will signal to the system that the stow was completed for the item
- When the system/Tron looks at the video, they will likely classify the stow as a “No Event”

# Body Mechanics – Key Technique's

## Upper Bins



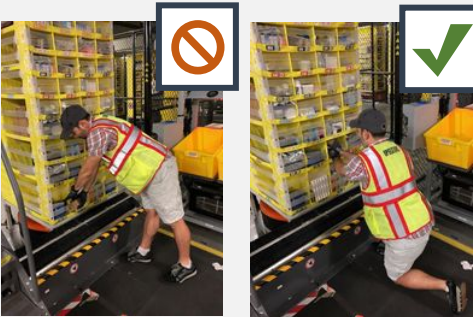
- Use a Ladder to place items in the upper bins
- Never reach for an upper bin

## Reaching



- Always square up to the Pod whether standing, in a power stance, or using a ladder
- Never reach across the body

## Lower Bins



- Use the power stance to place items in the lower bins
- Never bend at the waist to reach for a lower bin

## Multi Touch



- Only touch the bin you plan to stow the item into
- Avoid touching other bins while stowing

**Quality**

### Multiple Events



- Touching the Pod face in different locations
- Reaching for a bin (across/no using a ladder/not bending)
- Inadvertently moving in front of the camera while stowing
- Forgetting to scan the next ASIN
- Moving the item from one bin to the next due to size constraints
- Hand stays in bin after stow
- Scanning an item while it is in the bin
- Stowing while Pod is in motion
- Items falling out of Pod
- Always use a ladder to stow items above shoulder height.



### Stow not Scan

- When you scan an item, you should see a white ribbon around the POD face for 2 secs
- The screen should reset the counter to zero whenever an item is scanned.
- You should here a bong bong scanner sound.

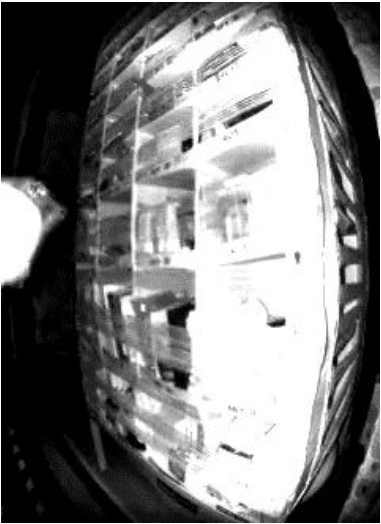
All the three happen at the same time.



### Late Magenta

- Magenta light comes up after item has been placed and hands removed. Do not remove the item
- Magenta comes up and shows that you cannot stow an item into the same bin where you stowed the same ASIN previously. Use another bin away from the adjacent bins





## Unclear or Blocking Stow

- Avoid having anything other than your hands and a single object in the active zone.
- Where possible always adopt a stance that makes it possible for at least 1 ODS and the RGB cameras to read your stows.
- Tie hair up
- Tuck in your badge
- When you use a hand scanner, do not take it into active zone as that will be considered a second item.

# Quality– Masterpacks and Multipacks

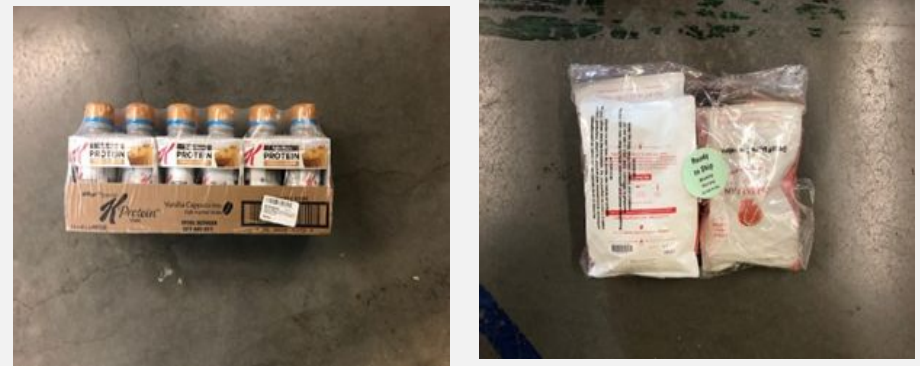
## Masterpacks



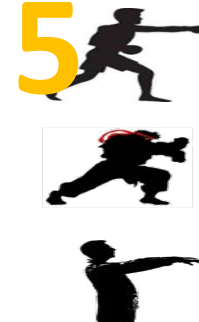
Same items in a box/case that need to be stowed individually.

Multiple items in a box/case that need to be stowed as one.

## Multipacks



# Quality– Golden Rules



Eagle Punch

Hadouken

Macarena

**GOLDEN RULE #1:**  
**One Item, One Scan, One Bin**

**GOLDEN RULE #2:**  
**Read your screen\***

**GOLDEN RULE #3:**  
**Don't Break Magenta**

**GOLDEN RULE #4:**  
**Avoid Multiple Events**

**GOLDEN RULE #5:**  
**Remember about Body Mechanics**

# Part 3

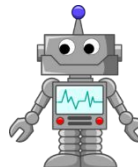
# ROBOTs

# Objective



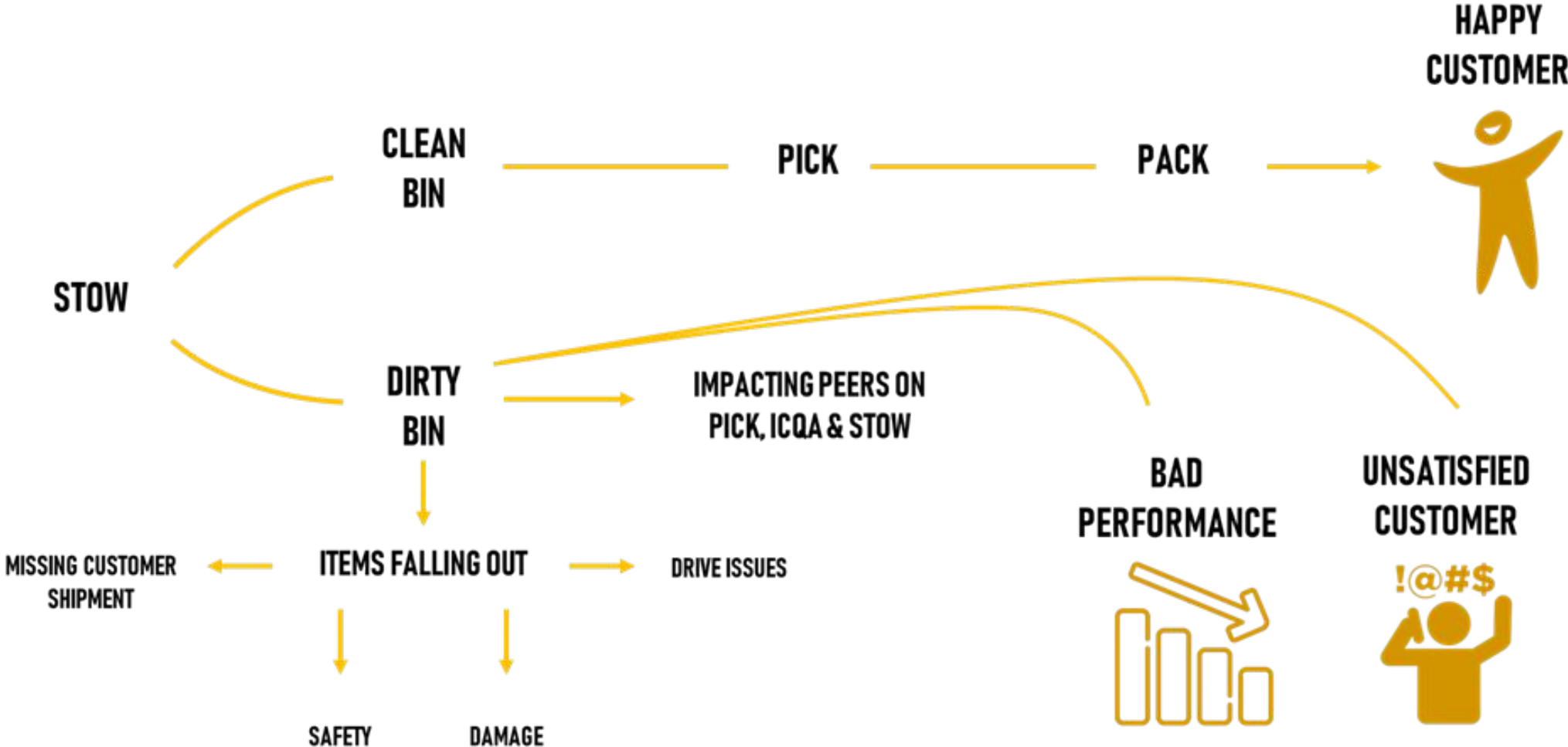
## Bin Etiquette –

- R** Place each item in the Right size bin using length, then height then width
- O** No OVERHANGING items
- B** Do not BLOCK small items by putting big items in front of them
- O** Do not OVERSTUFF bins
- T** Place books/DVDS with TITLES OUT
- S** SAME/SIMILAR ASINS should not be placed in adjacent bins. No STACKING.

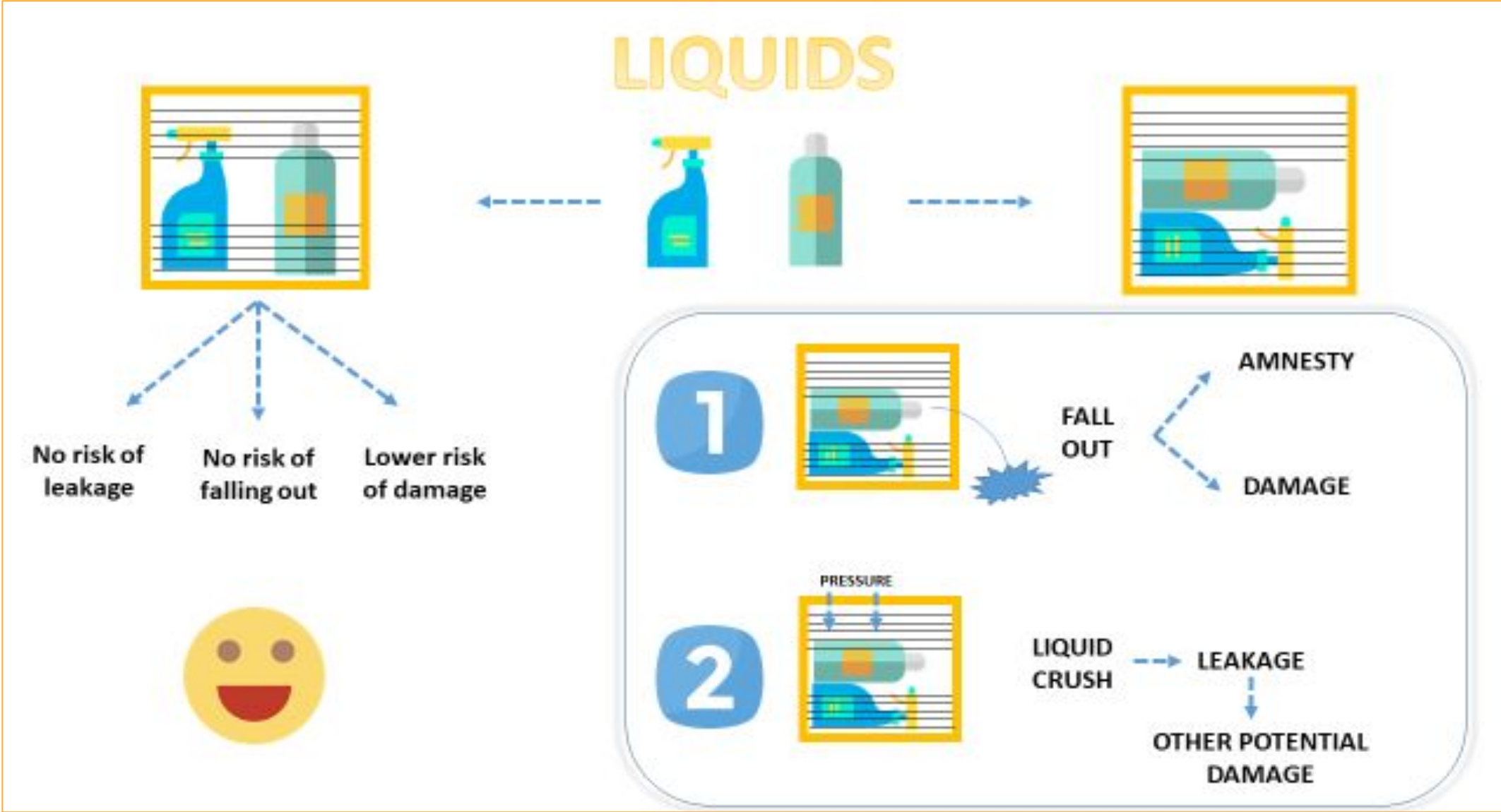


- In this section, we will first discuss what each letter of ROBOTS stands for
- Following this we will work with 3 pods to look at good stow etiquette and poor stow etiquette
- Finally we will practice some stow etiquette behaviours

# Bin Etiquette Impact



# Bin Etiquette Impact- Liquids



# Part 4