

# Windows and Ubuntu

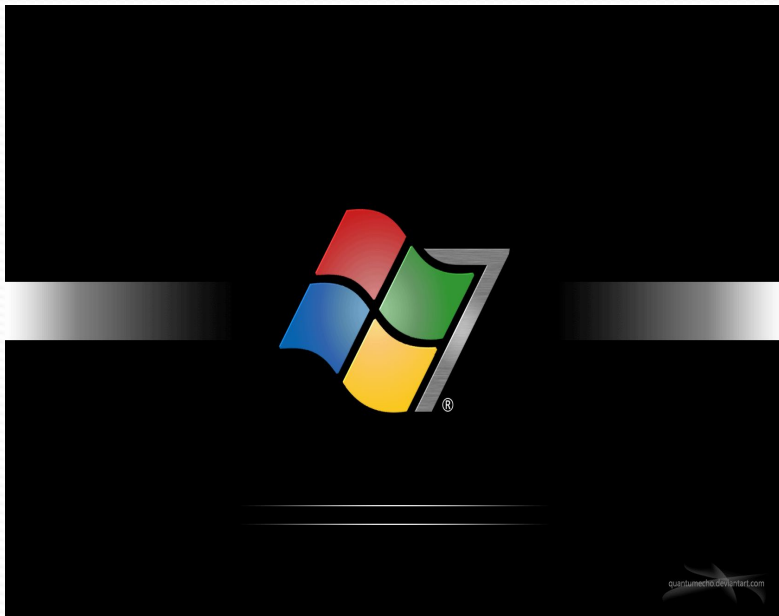


Operating systems



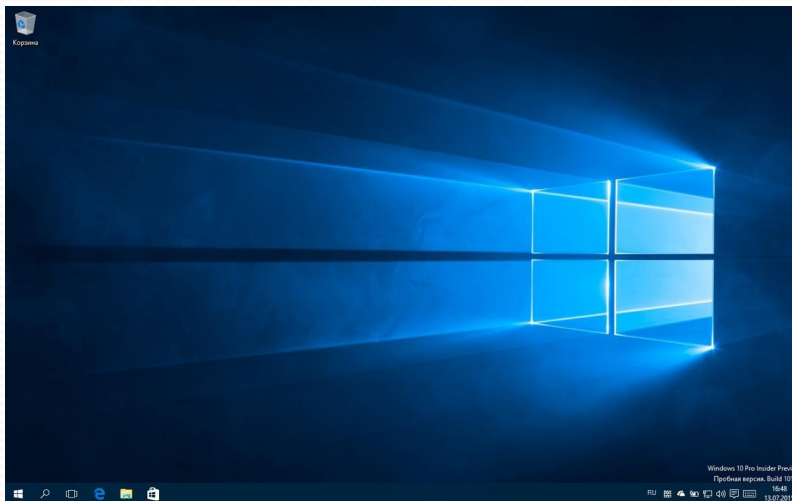
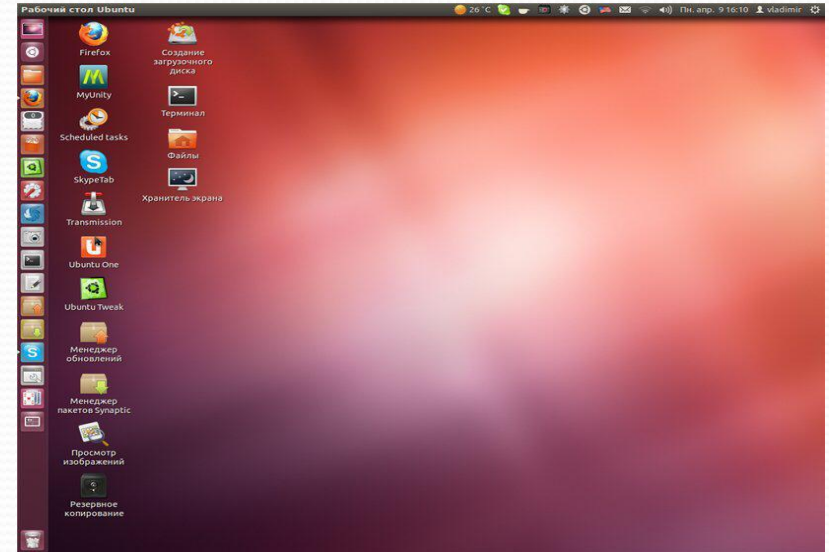
# WHAT IS IT?

- At first we must say some information about Windows and Ubuntu.



# System requirements

- The system requirements for ubuntu are quite modest. For example, for stable work, windows vista needs at least 20 gigabytes of hard disk space and at least one gigabyte of RAM. Ubuntu needs only 2, 25 gigabytes of hard disk space, and 256 megabytes of RAM.



Moreover, it already contains everything that is in windows, and if something is missing, you can additionally download software from the Internet, and absolutely free of charge.

# VIRUSES

- Also, as it was stated in the last lesson, since all viruses are written to the windows operating system, ubuntu does not suffer from them, which allows you to work without an antivirus and without hesitation to insert a computer flash drive into the device.

```
Select Ubuntu on Windows
root@localhost:~# cat /etc/issue
Ubuntu 14.04.4 LTS \n \l

root@localhost:~# uname -a
Linux localhost 3.4.0v #1 PREEMPT Thu Aug 1 17:06:05 CST 2013 x86_64 x86_64 x86_64 GNU/Linux
root@localhost:~# ps
  PID TTY          TIME CMD
    1 ?        00:00:00 init
    2 ?        00:00:01 bash
  576 ?        00:00:00 ps
root@localhost:~# free
              total        used        free      shared  buffers   cached
Mem:           1031052      350316      680736           0           0           0
-/+ buffers/cache: 0          0          1031052
Swap:              0              0              0
root@localhost:~# grep CPU /proc/cpuinfo | sed "s/s/ -- WOW/"
model name      : Intel(R) Core(TM) i7-5600U CPU @ 2.60GHz -- WOW
model name      : Intel(R) Core(TM) i7-5600U CPU @ 2.60GHz -- WOW
model name      : Intel(R) Core(TM) i7-5600U CPU @ 2.60GHz -- WOW
model name      : Intel(R) Core(TM) i7-5600U CPU @ 2.60GHz -- WOW
root@localhost:~# mount
rootfs on / type rootfs (ro,relatime)
tmpfs on /dev type tmpfs (rw,seclabel,nosuid,relatime,mode=755)
devpts on /dev/pts type devpts (rw,seclabel,relatime,mode=600)
proc on /proc type proc (rw,relatime)
sysfs on /sys type sysfs (rw,seclabel,relatime)
root@localhost:~# wget http://www.ubuntu.com
--2016-03-30 04:13:55--  http://www.ubuntu.com/
Resolving www.ubuntu.com (www.ubuntu.com)... 91.189.89.118
Connecting to www.ubuntu.com (www.ubuntu.com)[91.189.89.118]:80... connected.
HTTP request sent, awaiting response... 200 OK
Length: 26057 (25k) [text/html]
Saving to: 'index.html.1'

100%[=====] 26,057  188KB/s  in 0.2s

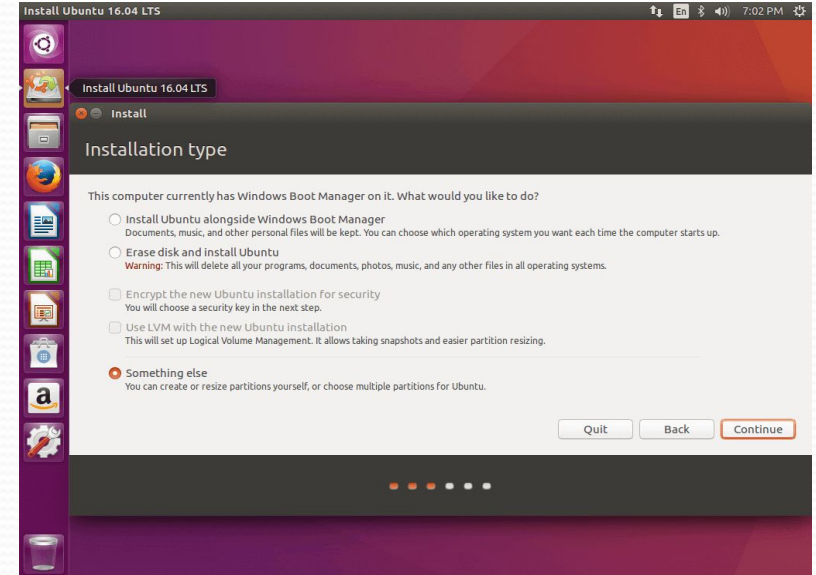
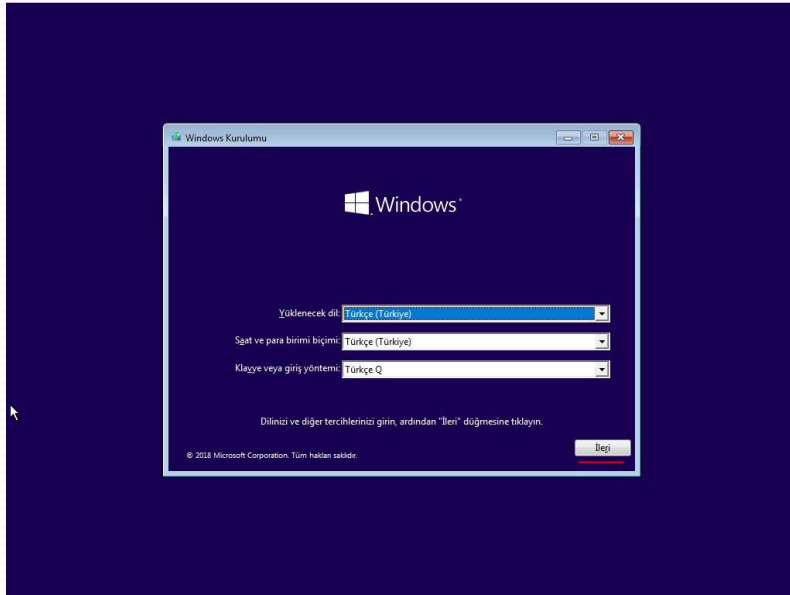
2016-03-30 04:13:55 (188 KB/s) - 'index.html.1' saved [26057/26057]

root@localhost:~# python
```



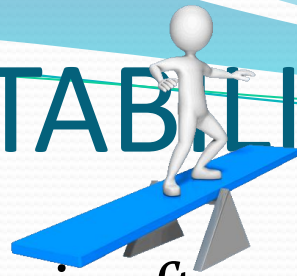
# INSTALLATION AND CUSTOMIZATION

- Installing Ubuntu is nothing complicated. It is very similar to Windows. You will see a beautiful installer, in which there is practically no need to make complex decisions and just click the Next button



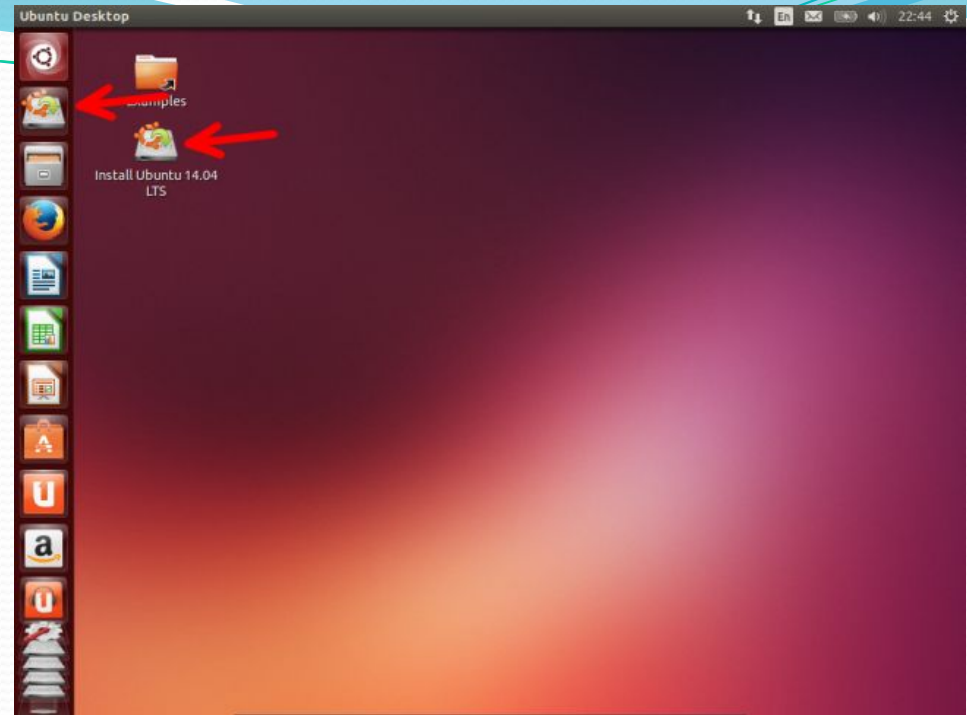
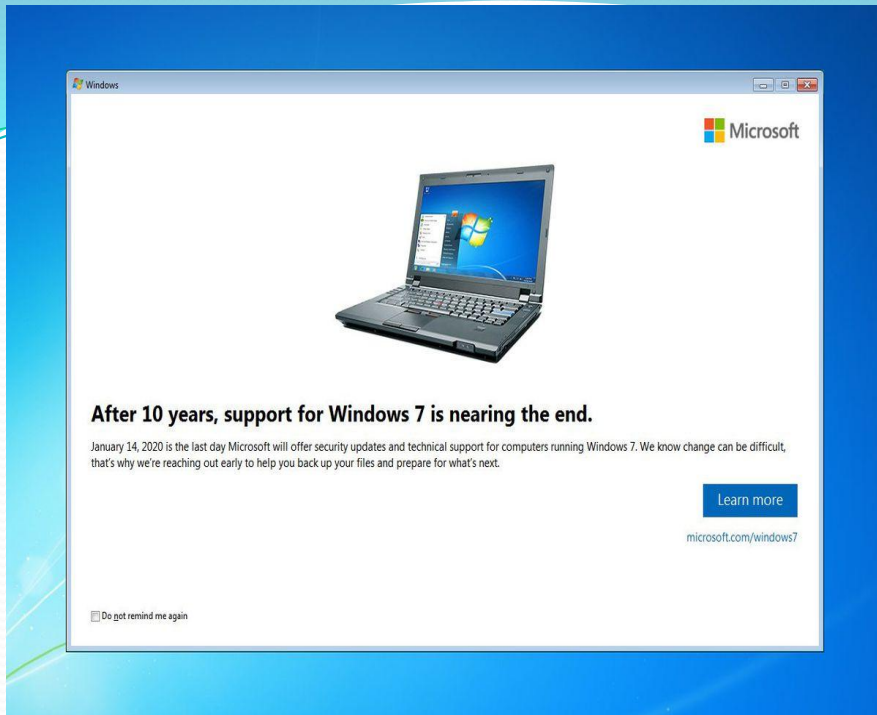


# STABILITY



- Stability - the system is often used on highly loaded servers. The OS does not require frequent computer reboots, even in cases of updates, installation or removal of programs.



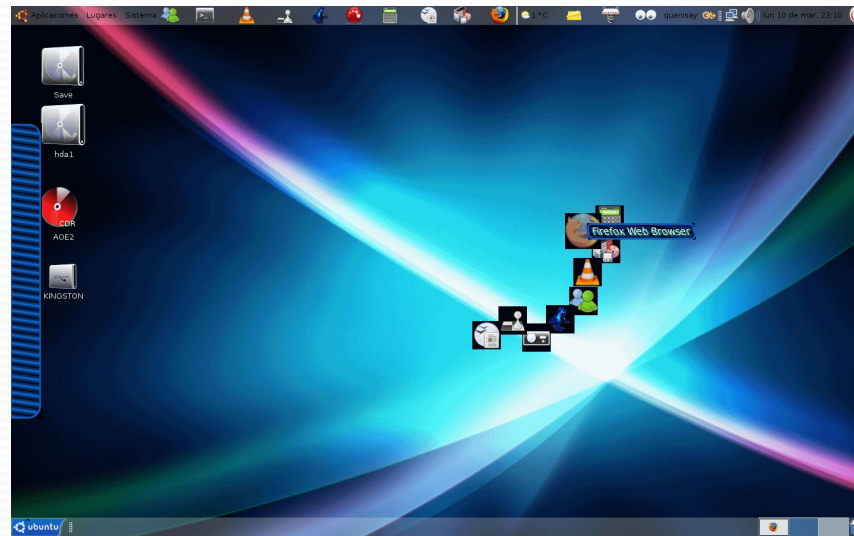


# SOFTWARE SUPPORT

- Unlike Windows, for Ubuntu, a drive is a physical drive with all partitions. You have hard drives.

# USABILITY OF UBUNTU

- Great option for beginners - all settings and settings are performed at an intuitive level. Through a specialized Synaptic package manager , the necessary programs are installed. It has the functions of viewing ratings, descriptions and reviews of programs.





# OF WINDOWS

- Underneath the icons is a label, “Change PC settings.” But the text is actually a seventh button that gives access to more PC settings. Previous versions of Windows—and practically every other operating system being distributed today—use 3-D shading to show what's a clickable control



Спасибо за внимание!

