



HUP series Horizontal Machining Centers

– Introduction



Applications

Industry	Typical parts	Material	HPDI	HI	HUP			Typical Customers
			high effective high accuracy	high rigidity	HUP80 100/125 4500rpm General workpieces	with Waxis deep hole machining	HUP80 100/125 160 en mold machining	
I/M parts	mold plate	cast iron		☑☑☑	☑☑☑			Hai tian
	valve plate bars	steel/cast iron	☑☑☑					
	injection stand	cast iron		☑☑☑	☑☑☑			
OI and Valves	valves	steel		☑☑☑	☑☑☑			Shanghai Xinlian
	diesel engine housing	cast iron	☑☑☑	☑☑☑	☑☑☑			Ningbo Zhongce
	drillers	alloy steel						
Agricultural machinery & mechanical engineering	forklift balancing block	cast iron		☑☑☑	☑☑☑			Ruyi forklift
	Tractor bridge	cast iron		☑☑☑	☑☑☑			YTO Group
	Railway controller housing	aluminum	☑☑☑				☑☑☑	CRRC Changchun Railway
	High voltage electrical tank	aluminum	☑☑☑				☑☑☑	Jiangsu Ankura
	Turret, planetary gear base	steel		☑☑☑				
Molds	Slider, slider stand	steel	☑☑☑				☑☑☑	Beilun Xinlin
	mold center	steel	☑☑☑				☑☑☑	Beilun Junlin
	mold base	steel	☑☑☑				☑☑☑	Tai zhou Kei ia
Automobile parts	transmission	aluminum	☑☑☑					ChangChun Sai de
	engine housing & cover	aluminum	☑☑☑					ChangChun Sai de
	Brake clamp, pump	cast iron	☑☑☑	☑☑☑	☑☑☑			ChangChun Sai de
Aviation	Helicopter hub	Titanium alloy		☑☑☑	☑☑☑			Changhe Air craft
	Aircraft landing gear	Titanium alloy		☑☑☑				Changhe Air craft

conformity ☑☑☑ recommend ☑☑☑ common



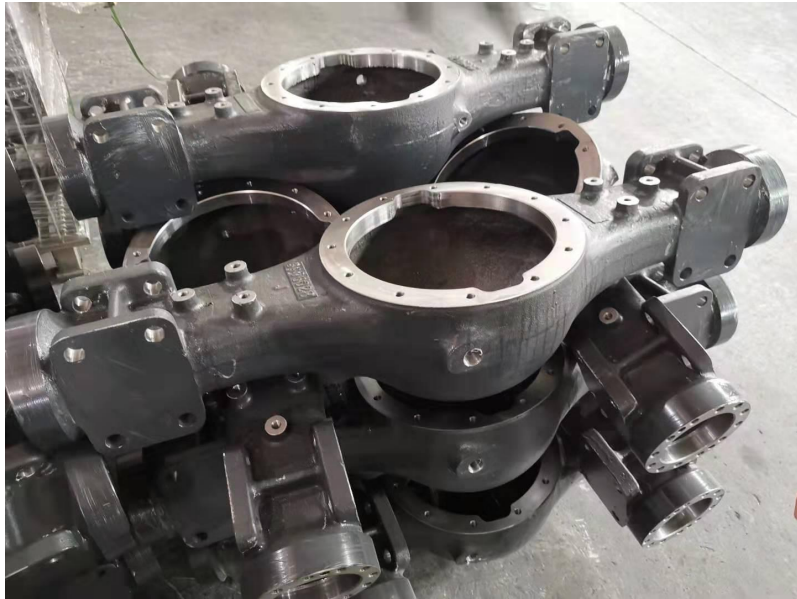
Machine features

HUP Series horizontal machining center, one time clamping can complete parts processing, especially suitable for the body parts of hole and plane processing, widely used in automotive, aerospace, rail transportation, oil valves, plastic machinery, mining machinery, general machinery and mechanical processing field.



HISION

Model	HUP80	HUP100	HUP125	HUP160
X travel (mm)	1270	1800	2000	2500
Y travel (mm)	980	1500	1500	1850
Z travel (mm)	1000	1350	1350	1500
W travel (mm)	535 (选项)			700
Table size (mm)	800×800	1000×1000	1250×1250	1600×1800
Table load (kg)	2000	3000	3000	8000
Indexing (°)	1°×360	1°×360	1°×360	0.001°
Spindle type	机械主轴			
Spindle speed	4500			2500
Spindle power	18.5/22			30/37
Spindle torque	703/837			1846/2277
Pallet change	旋转式	旋转式	旋转式	平移式
Tool capacity	40	40	40	40 (选配)



Axle (cast steel)



Gearbox body (casting)

The HUP series has a large stroke, with high rapid traverse, is suitable for the processing of box and shell workpieces.



ITEMS			SPEC	ITEMS			SPEC
Machining range	X travel	mm	1270	Tool magazine	Capacity	T	40
	Y travel	mm	980		Max. tool diameter	mm	Φ 120 (Φ 240)
	Z travel	mm	1000		Max. tool length	mm	500
	Distance from spindle center to table	mm	0-980		Max. tool weight	kg	30
	Spindle nose to table center	mm	230-1230				
Table	size	mm	800×800	Positioning accuracy	X (with scale)	mm	0.012 (0.010)
	Max loading	kg	2000		Y (with scale)	mm	0.012 (0.010)
	Index	°	1° × 360		Z (with scale)	mm	0.012 (0.010)
Spindle	Max. speed	rpm	4500		Cranksset table	"	8
	Max. power	kW	18.5/22		NC table	"	10 (OP)
	Max. torque	Nm	703/837	X (with scale)	mm	0.008 (0.006)	
	spindle taper	-	ISO7:24 NO.50	Y (with scale)	mm	0.008 (0.006)	
	Pull stud	-	P50T-2-MAS403	Z (with scale)	mm	0.008 (0.006)	
Feeds	Cutting feed X/Y/Z	m/min	12/12/12	Repeatability	Cranksset table	"	4
	Rapid feed X/Y/Z	m/min	24/24/24		NC table	"	6 (OP)
	Rapid feed X/Y/Z	mm	0.001		Required power		kVA
				Controller		-	FANUC 0i

ITEMS			SPEC	ITEMS			SPEC	
Machining range	X travel	mm	1800	Tool magazine	Capacity	T	40	
	Y travel	mm	1500		Max. tool diameter	mm	Φ 120 (Φ 240)	
	Z travel	mm	1350		Max. tool length	mm	500	
	Distance from spindle center to table	mm	0-1500 100-1600 (/D)		Max. tool weight	kg	30	
	Spindle nose to table center	mm	300-1650					
Table	size	mm	1000×1000	Positioning accuracy	X (with scale)	mm	0.015 (0.012)	
	Max loading	kg	3000		Y (with scale)	mm	0.015 (0.012)	
	Index	°	1° ×360		Z (with scale)	mm	0.015 (0.012)	
Spindle	Max. speed	rpm	4500		Repeatability	Crankset table	"	8
	Max. power	kW	18.5/22			NC table	"	10(OP)
	Max. torque	Nm	703/837	X (with scale)		mm	0.010 (0.008)	
	spindle taper	-	IS07:24 NO.50	Y (with scale)		mm	0.010 (0.008)	
	Pull stud	-	P50T-2-MAS403	Z (with scale)		mm	0.010 (0.008)	
Feeds	Cutting feed X/Y/Z	m/min	6/6/6	Crankset table		"	4	
	Rapid feed X/Y/Z	m/min	15/15/15	NC table	"	6(OP)		
	Rapid feed X/Y/Z	mm	0.001	Required power	kVA	65		
				Controller	-	FANUC 0i		

ITEMS			SPEC	ITEMS			SPEC
Machining range	X travel	mm	2000	Tool magazine	Capacity	T	40
	Y travel	mm	1500		Max. tool diameter	mm	Φ 120 (Φ 240)
	Z travel	mm	1350		Max. tool length	mm	500
	Distance from spindle center to table	mm	0-1500 100-1600 (/D)		Max. tool weight	kg	30
	Spindle nose to table center	mm	350-1700				
Table	size	mm	1250×1250	Positioning accuracy	X (with scale)	mm	0.015 (0.012)
	Max loading	kg	3000		Y (with scale)	mm	0.015 (0.012)
	Index	°	1° ×360		Z (with scale)	mm	0.015 (0.012)
Spindle	Max. speed	rpm	4500		Crankset table	"	8
	Max. power	kW	18.5/22		NC table	"	10(OP)
	Max. torque	Nm	703/837	X (with scale)	mm	0.010 (0.008)	
	spindle taper	-	IS07:24 NO.50	Y (with scale)	mm	0.010 (0.008)	
	Pull stud	-	P50T-2-MAS403	Z (with scale)	mm	0.010 (0.008)	
Feeds	Cutting feed X/Y/Z	m/min	6/6/6	Repeatability	Crankset table	"	4
	Rapid feed X/Y/Z	m/min	15/15/15		NC table	"	6(OP)
	Rapid feed X/Y/Z	mm	0.001		Required power		kVA
				Controller		-	FANUC 0i

ITEMS			SPEC	ITEMS			SPEC	
Machining range	X travel	mm	2500	Tool magazine (OP)	Capacity	T	40	
	Y travel	mm	1850		Positioning accuracy	Max. tool diameter	mm	Φ120(Φ240)
	Z travel	mm	1500			Max. tool length	mm	500
	W axis	mm	700			Max. tool weight	kg	30
	Distance from spindle center to table	mm	0-1850			X (with scale)	mm	0.020(0.015)
	Spindle nose to table center	mm	580-2080			Y (with scale)	mm	0.020(0.015)
Table	size	mm	1600×1800	Z (with scale)		mm	0.020(0.015)	
	Max loading	kg	8000	B axis	"	15		
	Index	°	0.001	Repeatability	X (with scale)	mm	0.012(0.010)	
Spindle	Max. speed	rpm	2500		Y (with scale)	mm	0.012(0.010)	
	Max. power	kW	30/37		Z (with scale)	mm	0.012(0.010)	
	Max. torque	Nm	1846/2277		B axis	"	8	
	W axis diameter	mm	Φ130		Required power	kVA	84	
	spindle taper	-	ISO7:24 NO.50			Controller	-	FANUC 0i
	Pull stud	-	P50T-2-MAS403					
Feeds	Cutting feed X/Y/Z	m/min	5/5/5					
	Rapid feed X/Y/Z	m/min	10/10/10					
	Rapid feed X/Y/Z	mm	0.001					

ITEMS			SPEC	ITEMS			SPEC		
Machining range	X travel	mm	2500	Tool magazine (OP)	Capacity	T	40		
	Y travel	mm	2000		Max. tool diameter	mm	Φ 120 (Φ 240)		
	Z travel	mm	1500		Max. tool length	mm	500		
	W axis	mm	700		Max. tool weight	kg	30		
	Distance from spindle center to table	mm	120-2120		X (with scale)	mm	0.020 (0.015)		
	Spindle nose to table center	mm	580-2080		Y (with scale)	mm	0.020 (0.015)		
Table	size	mm	1600×1800	Positioning accuracy	Z (with scale)	mm	0.020 (0.015)		
	Max loading	kg	10000		B axis	"	15		
	Index	°	0.001		X (with scale)	mm	0.012 (0.010)		
Spindle	Max. speed	rpm	2500	Repeatability	Y (with scale)	mm	0.012 (0.010)		
	Max. power	kW	30/37		Z (with scale)	mm	0.012 (0.010)		
	Max. torque	Nm	1846/2277		B axis	"	8		
	W axis diameter	mm	Φ 130		Required power			kVA	84
	spindle taper	-	ISO7:24 NO.50		Controller			-	FANUC 0i
	Pull stud	-	P50T-2-MAS403						
Feeds	Cutting feed X/Y/Z	m/min	5/5/5						
	Rapid feed X/Y/Z	m/min	10/10/10						
	Rapid feed X/Y/Z	mm	0.001						

ITEMS			SPEC	ITEMS			SPEC		
Machining range	X travel	mm	2500	Tool magazine (OP)	Capacity	T	40		
	Y travel	mm	2000		Max. tool diameter	mm	Φ 120 (Φ 240)		
	Z travel	mm	1400		Max. tool length	mm	500		
	W axis	mm	700		Max. tool weight	kg	30		
	Distance from spindle center to table	mm	0-2000		X (with scale)	mm	0.020 (0.015)		
	Spindle nose to table center	mm	680-2080		Y (with scale)	mm	0.020 (0.015)		
Table	size	mm	1800×2000	Positioning accuracy	Z (with scale)	mm	0.020 (0.015)		
	Max loading	kg	20000		B axis	"	15		
	Index	°	0.001		X (with scale)	mm	0.012 (0.010)		
Spindle	Max. speed	rpm	2500	Repeatability	Y (with scale)	mm	0.012 (0.010)		
	Max. power	kW	30/37		Z (with scale)	mm	0.012 (0.010)		
	Max. torque	Nm	1846/2277		B axis	"	8		
	W axis diameter	mm	Φ 130		Required power			kVA	84
	spindle taper	-	ISO7:24 NO. 50		Controller			-	FANUC 0i
	Pull stud	-	P50T-2-MAS403						
Feeds	Cutting feed X/Y/Z	m/min	5/5/5						
	Rapid feed X/Y/Z	m/min	10/10/10						
	Rapid feed X/Y/Z	mm	0.001						

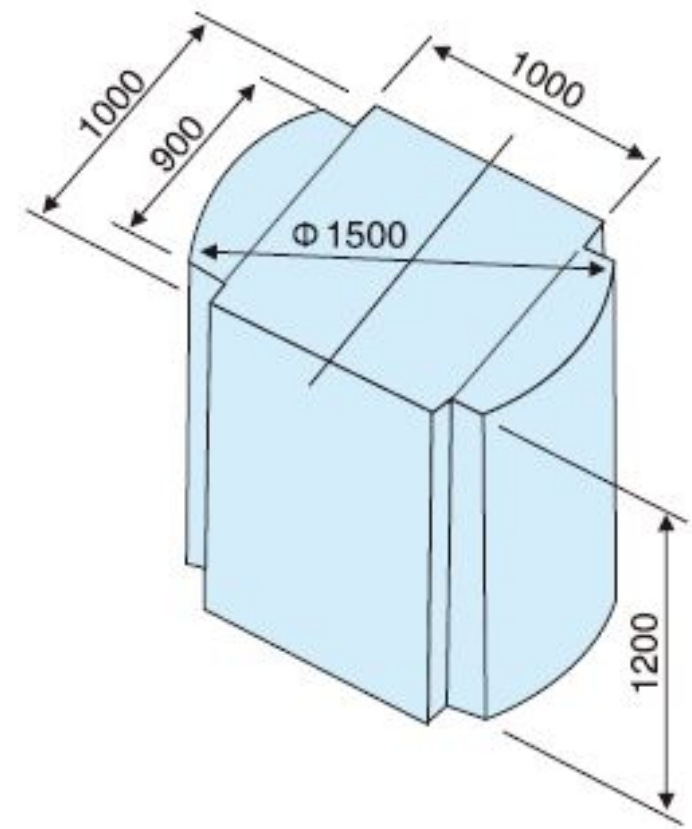
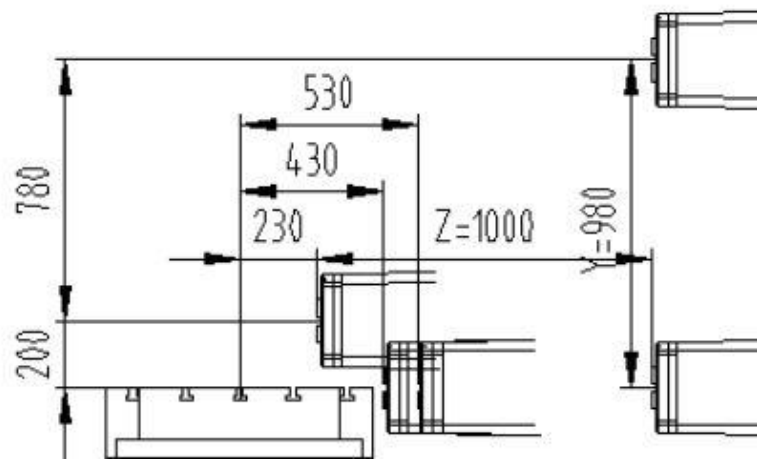
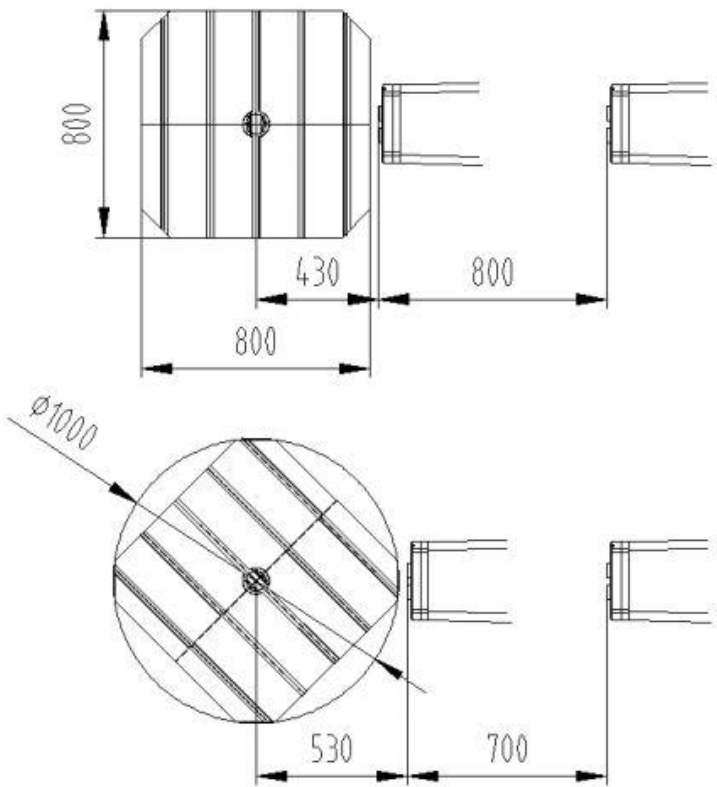
ITEMS			SPEC	ITEMS			SPEC	
Machining range	X travel	mm	2500	Tool magazine (OP)	Capacity	T	40	
	Y travel	mm	1850		Max. tool diameter	mm	Φ 120 (Φ 240)	
	Z travel	mm	1400		Max. tool length	mm	500	
	Distance from spindle center to table	mm	0-1850		Max. tool weight	kg	30	
	Spindle nose to table center	mm	370-1770					
Table	size	mm	1600×1800	Positioning accuracy	X (with scale)	mm	0.020 (0.015)	
	Max loading	kg	8000		Y (with scale)	mm	0.020 (0.015)	
	Index	°	0.001		Z (with scale)	mm	0.020 (0.015)	
Spindle	Max. speed	rpm	4500	Repeatability	B axis	"	15	
	Max. power	kW	22/25		X (with scale)	mm	0.012 (0.010)	
	Max. torque	Nm	505/600		Y (with scale)	mm	0.012 (0.010)	
	W axis diameter	mm	Φ 130		Z (with scale)	mm	0.012 (0.010)	
	spindle taper	-	ISO7:24 NO.50		B axis	"	8	
	Pull stud	-	P50T-2-MAS403					
Feeds	Cutting feed X/Y/Z	m/min	4/4/4	Required power			kVA	84
	Rapid feed X/Y/Z	m/min	10/10/10	Controller			-	FANUC 0i
	Rapid feed X/Y/Z	mm	0.001					

Pallet size



Max. rapid feed X/Y/Z m/min	24/24/24
-----------------------------	----------

Max. workpiece rotary diameter and height



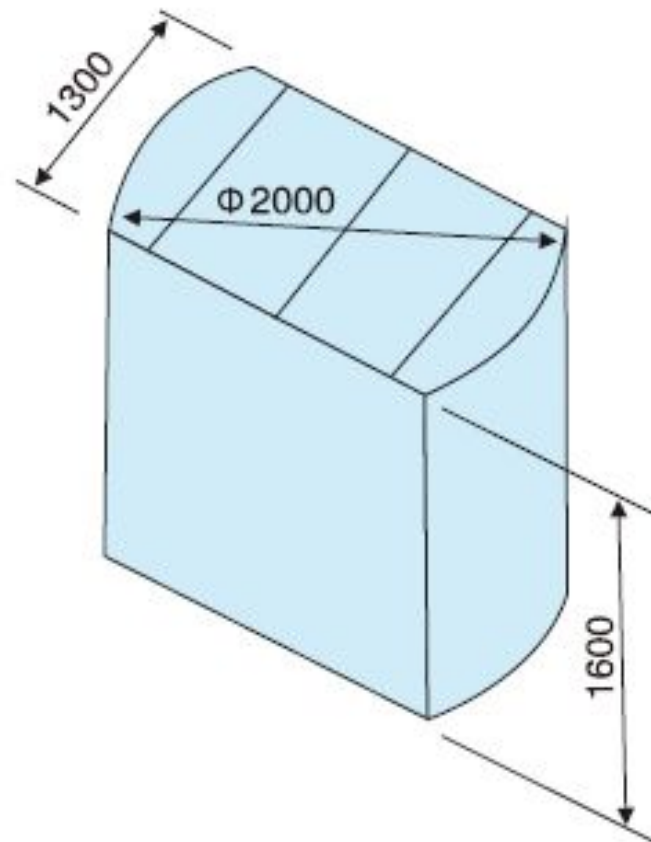
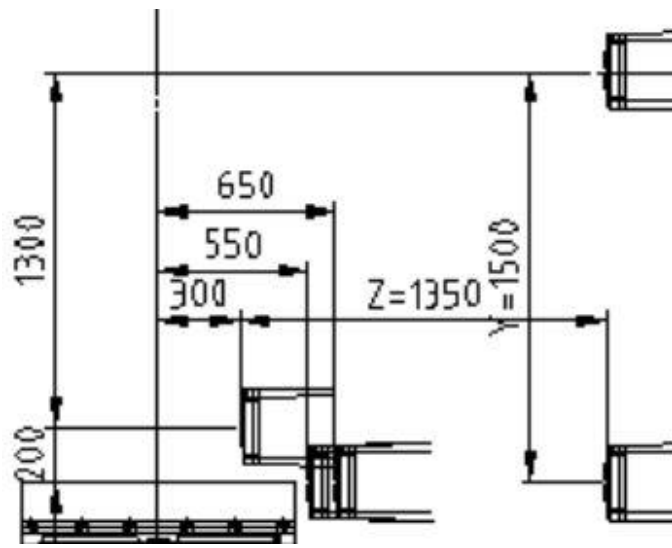
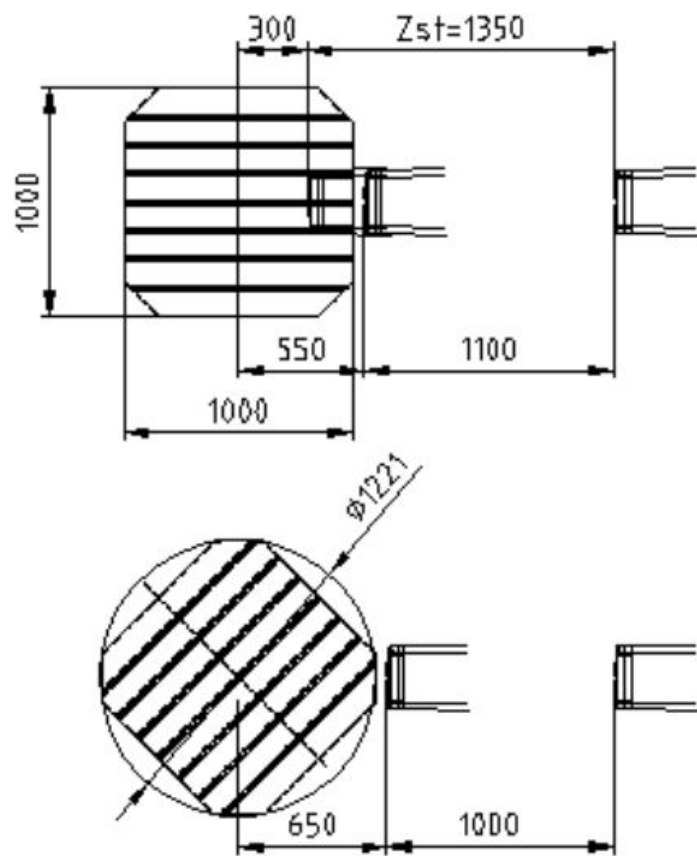
HUP80 HUP80/D



Pallet size

Max. rapid feed X/Y/Z m/min	15/15/15
-----------------------------	----------

Max. workpiece rotary diameter and height



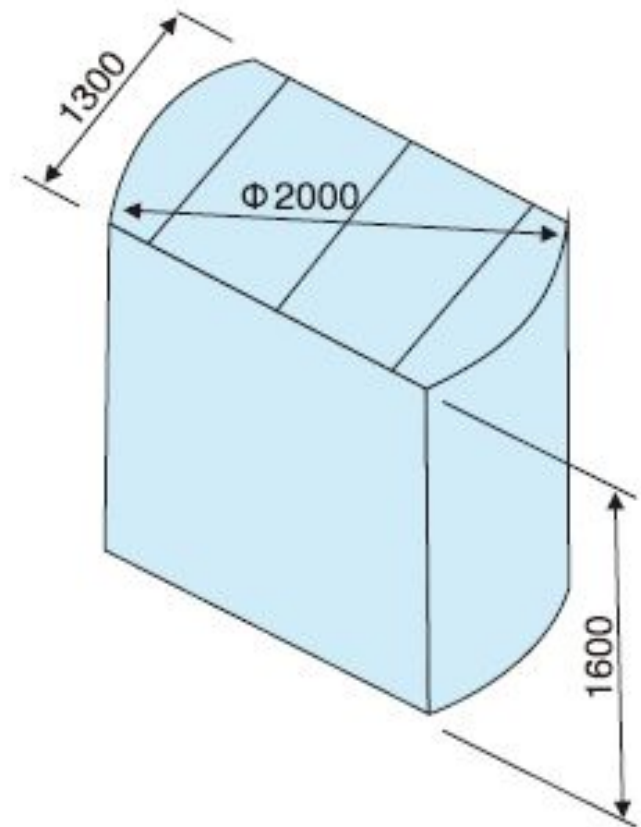
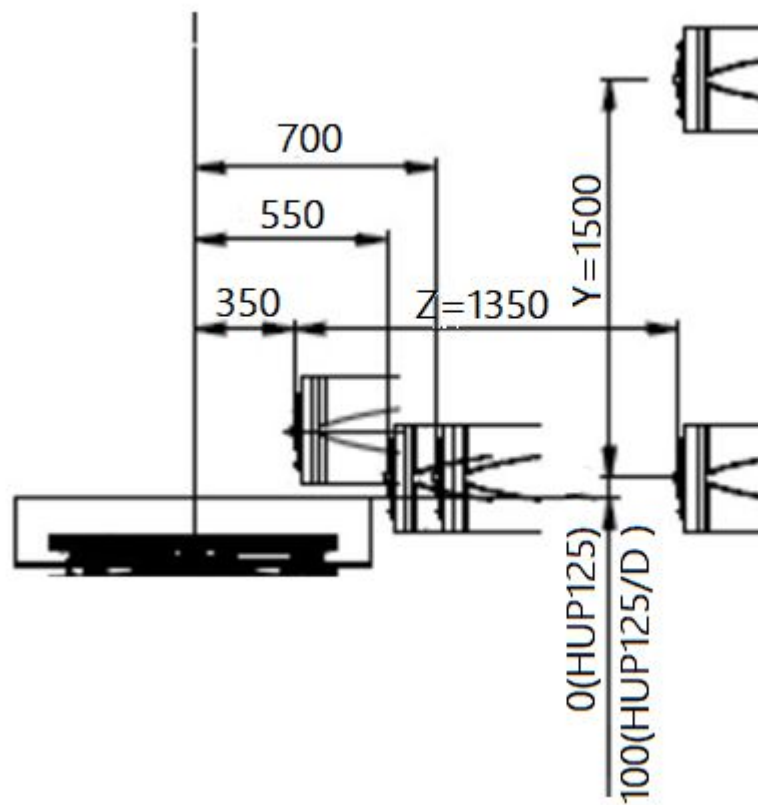
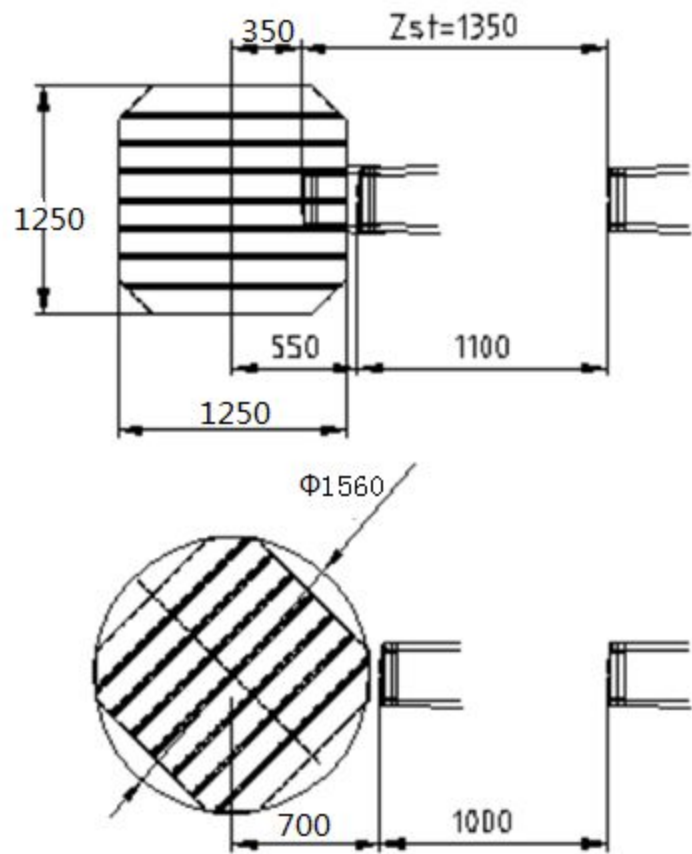
HUP100 HUP100/D



Pallet size

Max. rapid feed X/Y/Z m/min	15/15/15
-----------------------------	----------

Max. workpiece rotary diameter and height



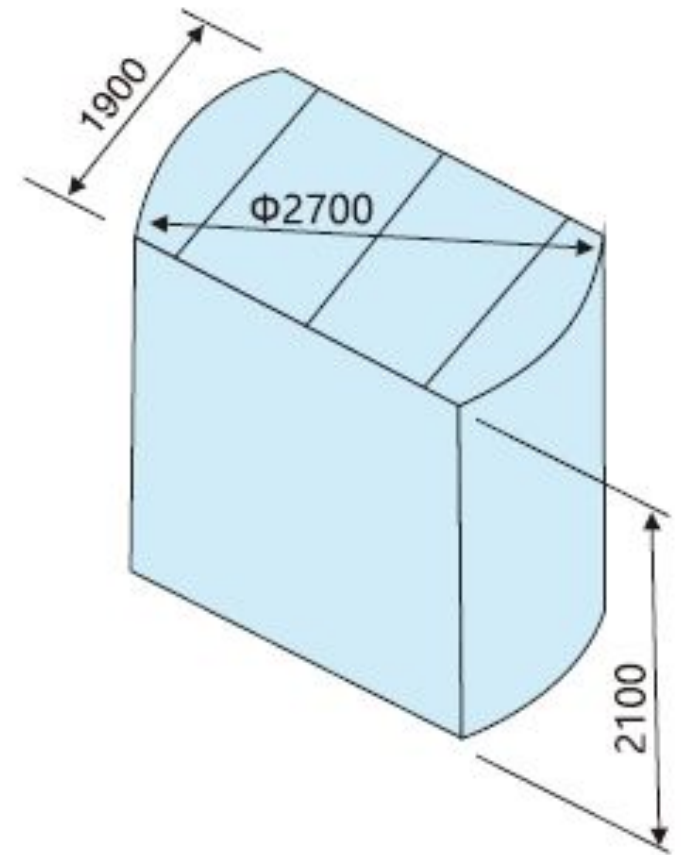
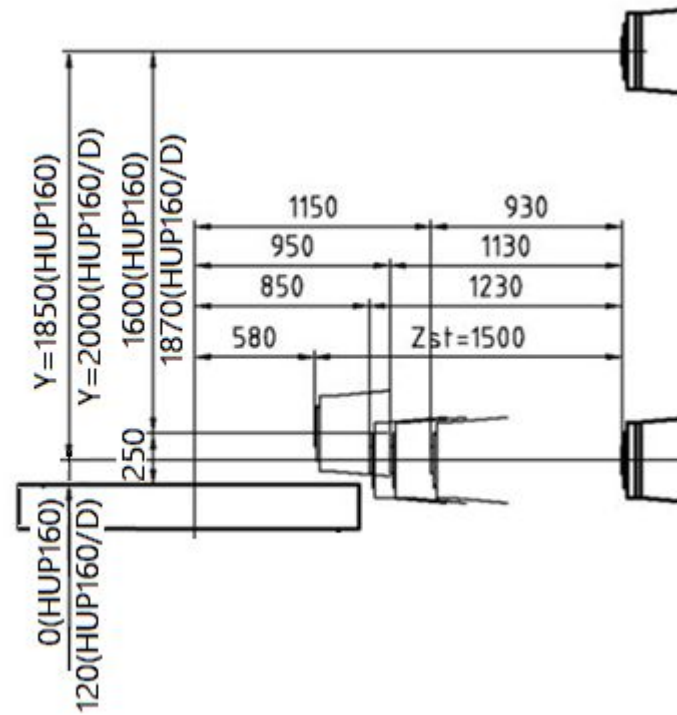
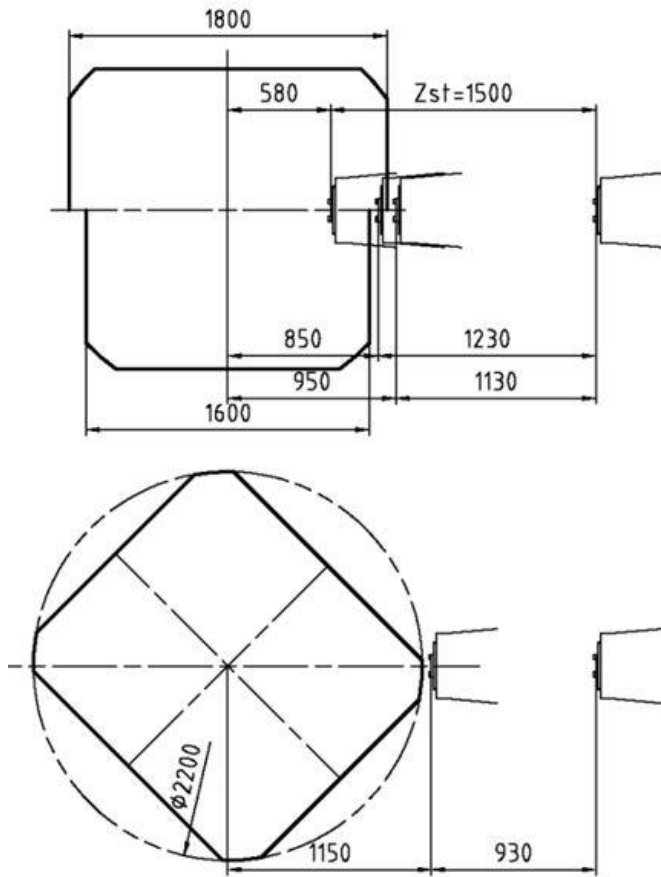
HUP125 HUP125/D



Pallet size

Max. rapid feed X/Y/Z m/min	10/10/10
-----------------------------	----------

Max. workpiece rotary diameter and height



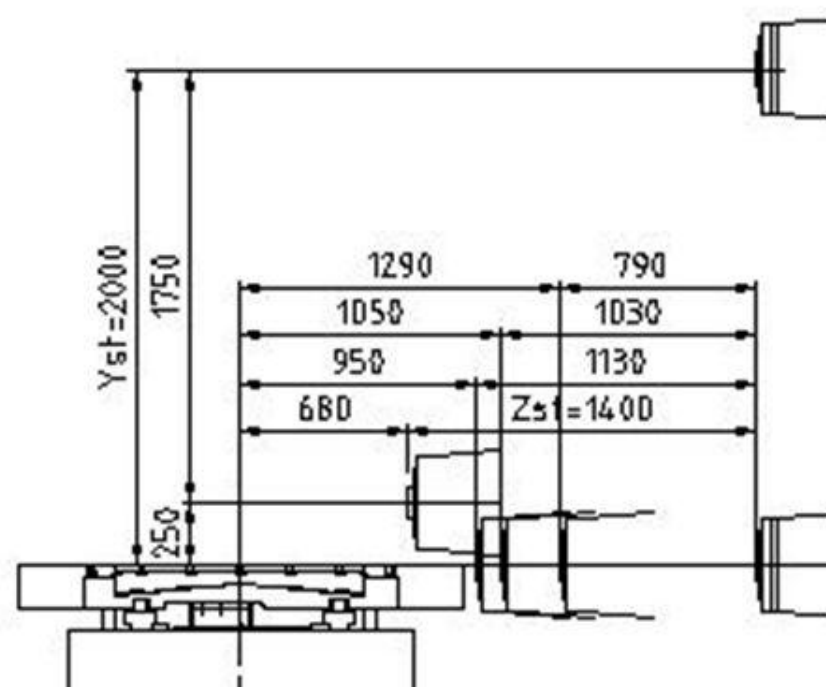
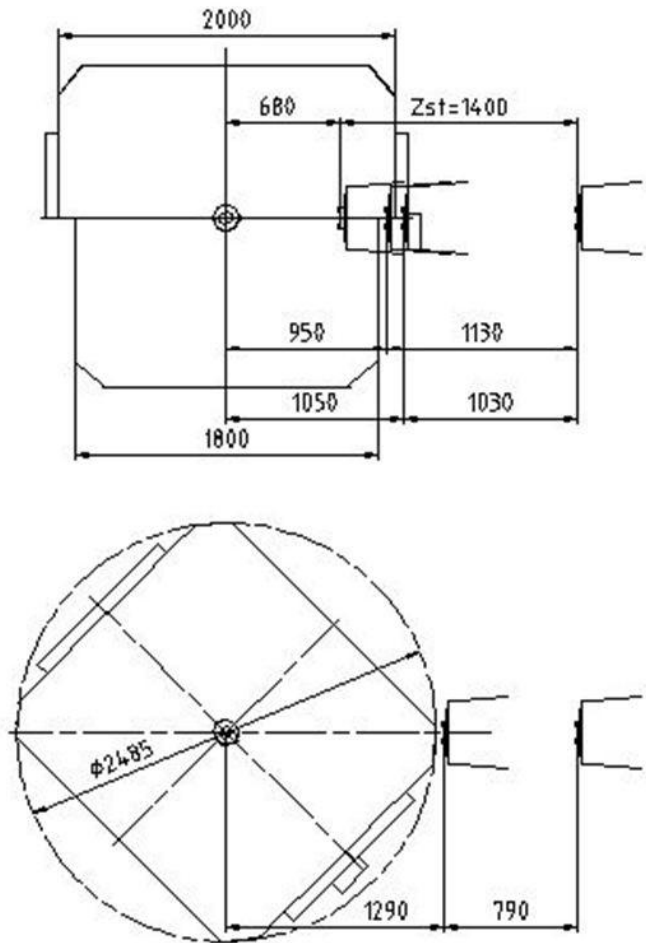
HUP160 HUP160/D 10T



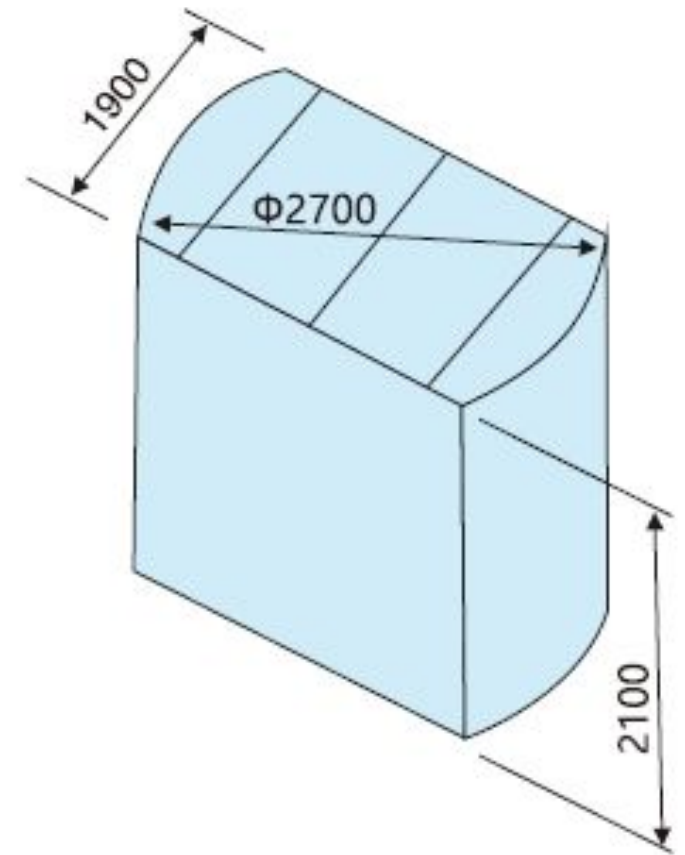
Pallet size

Max. rapid feed X/Y/Z m/min	10/10/10
-----------------------------	----------

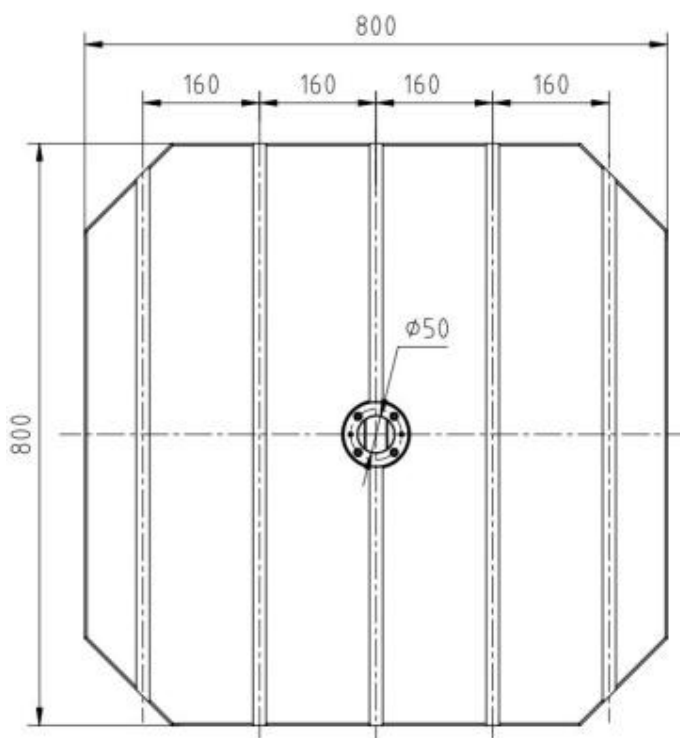
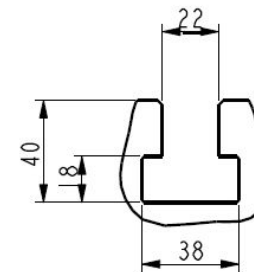
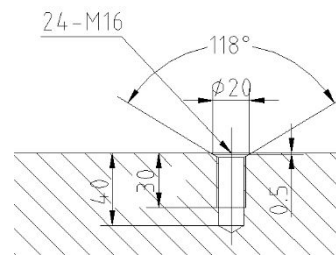
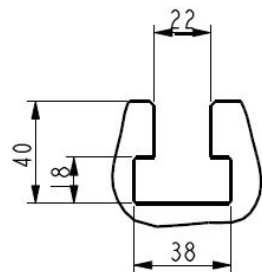
Max. workpiece rotary diameter and height



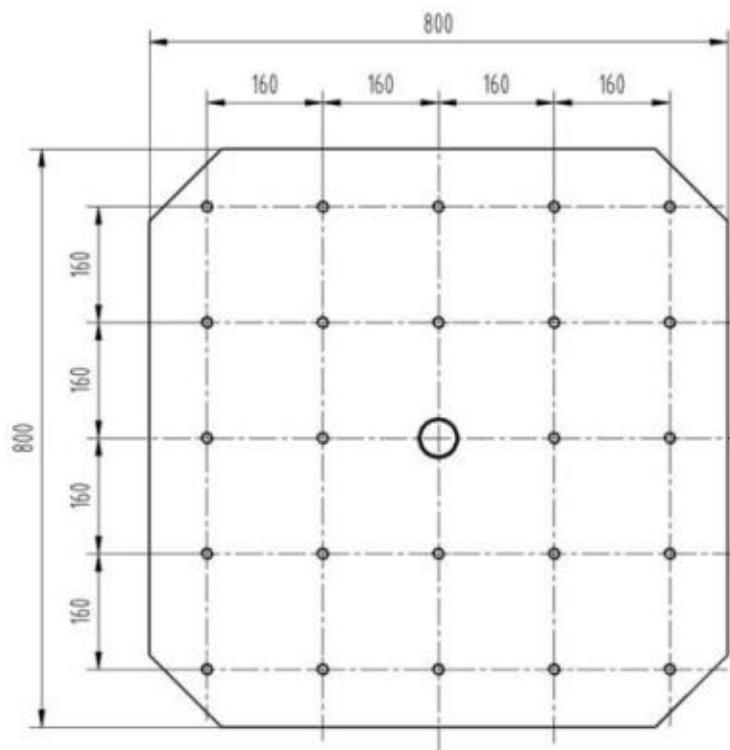
HUP160/D 20T



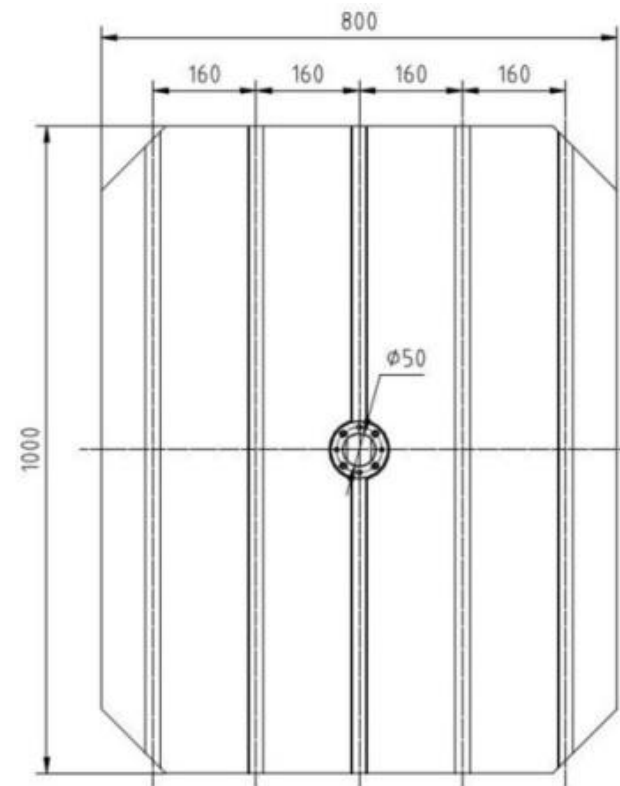
HUP80 HUP80/D Pailet



800x800 T slot(STD)



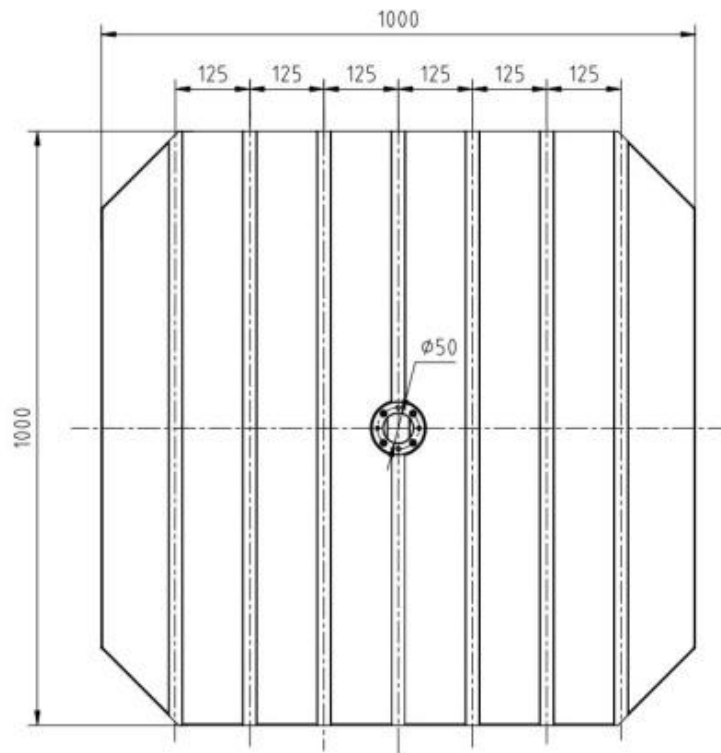
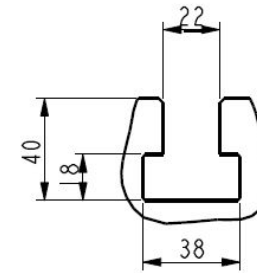
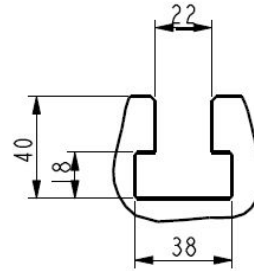
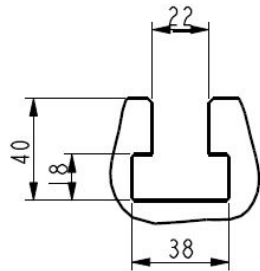
800x800 screw hole(OP)



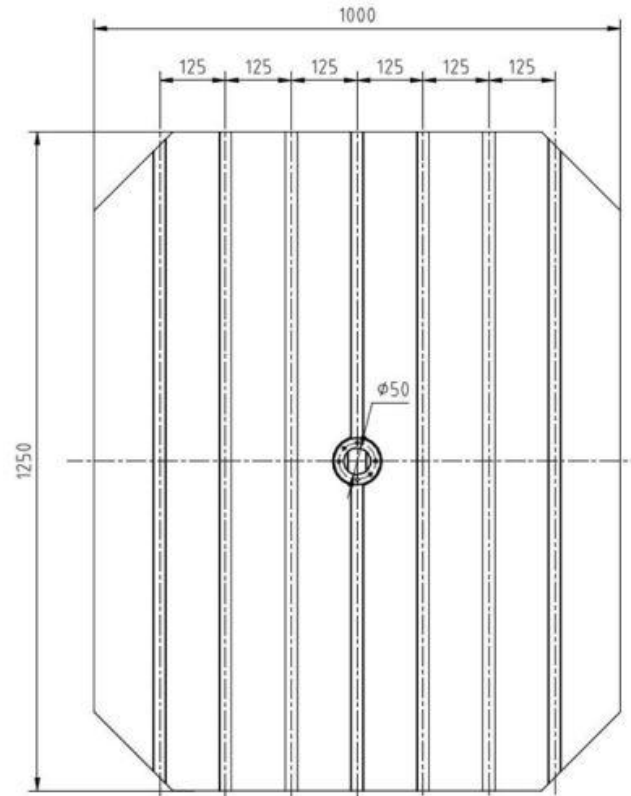
800x1000 T slot(OP)



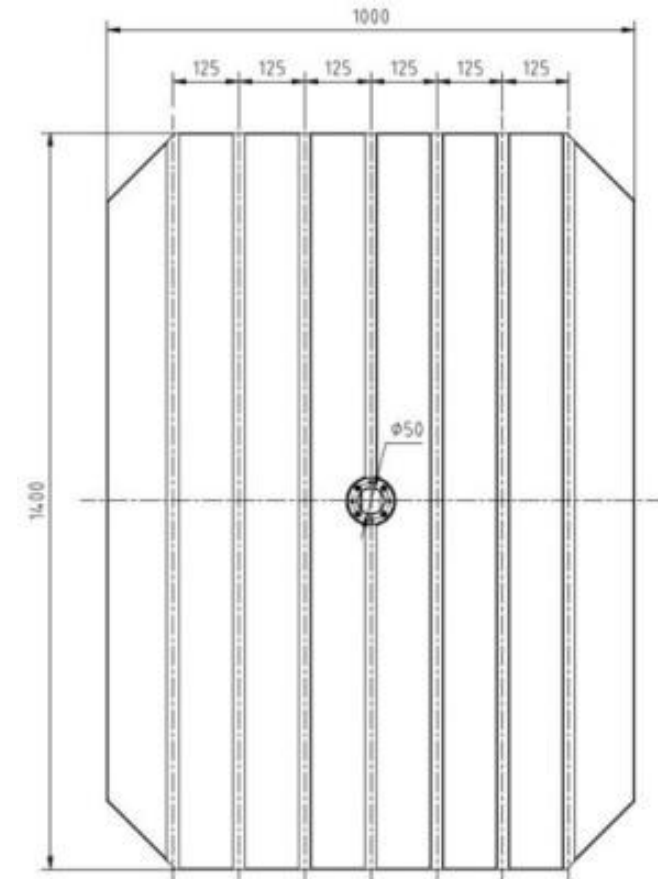
HUP100 HUP100/D Pa llet



1000×1000 T Slot
(STD)



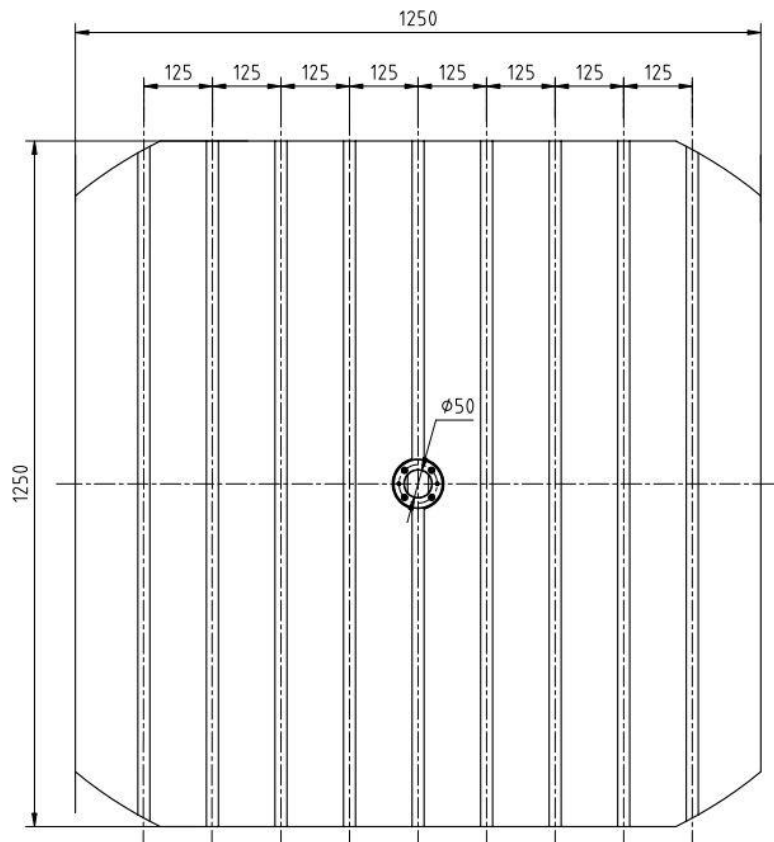
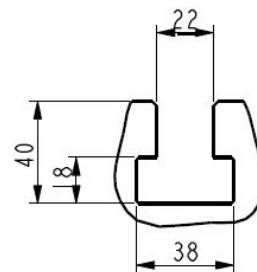
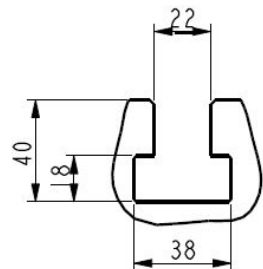
1000×1250 T Slot (100 OP)



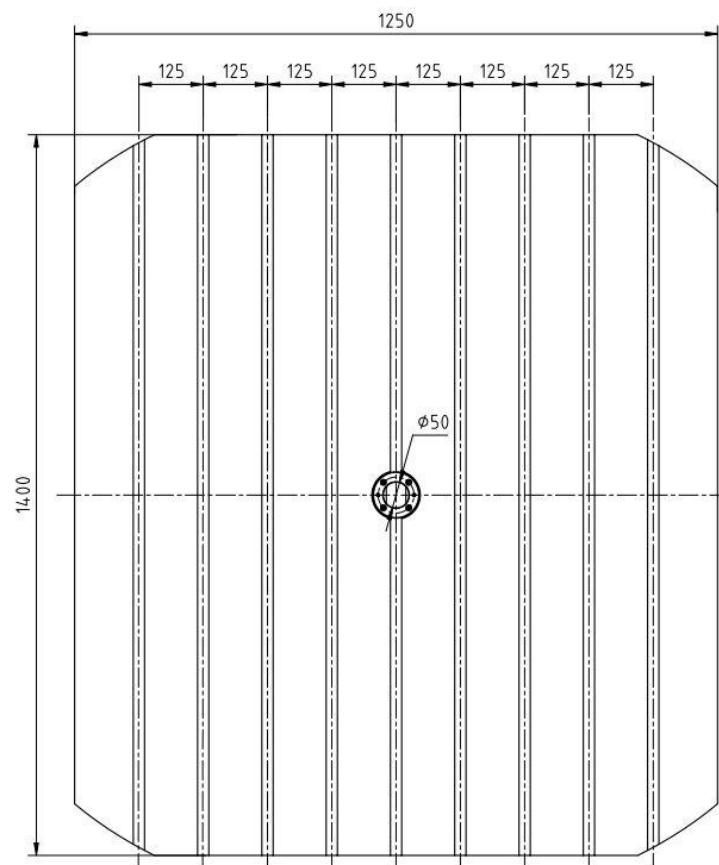
1000×1400 T Slot (100/D OP)



HUP125 HUP125/D Pailet



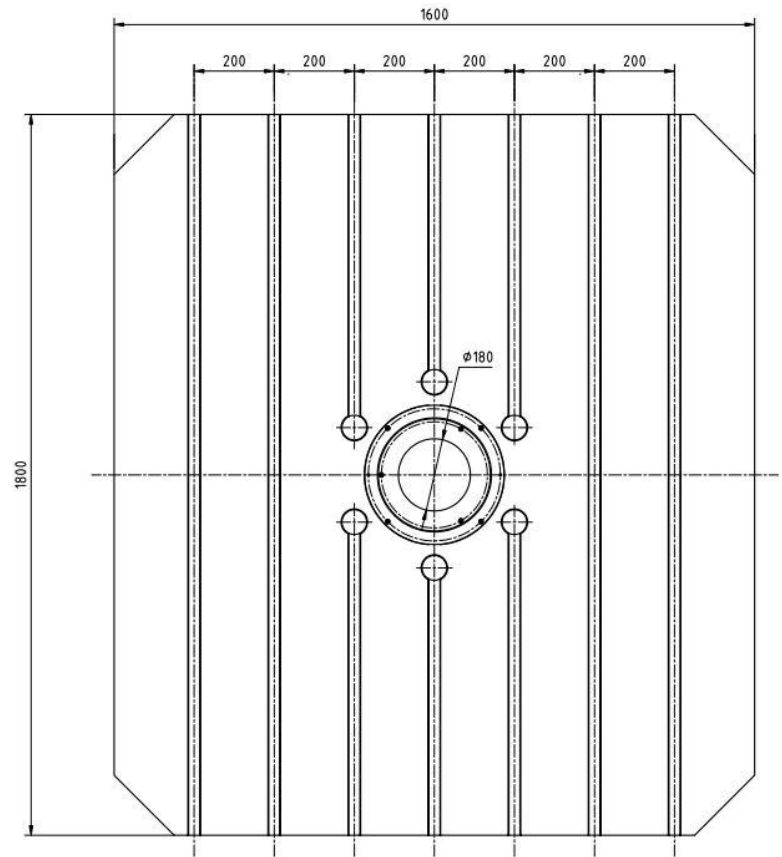
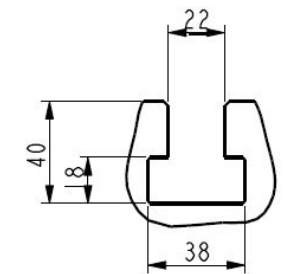
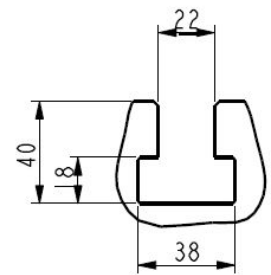
1250x1250 T Slot (STD)



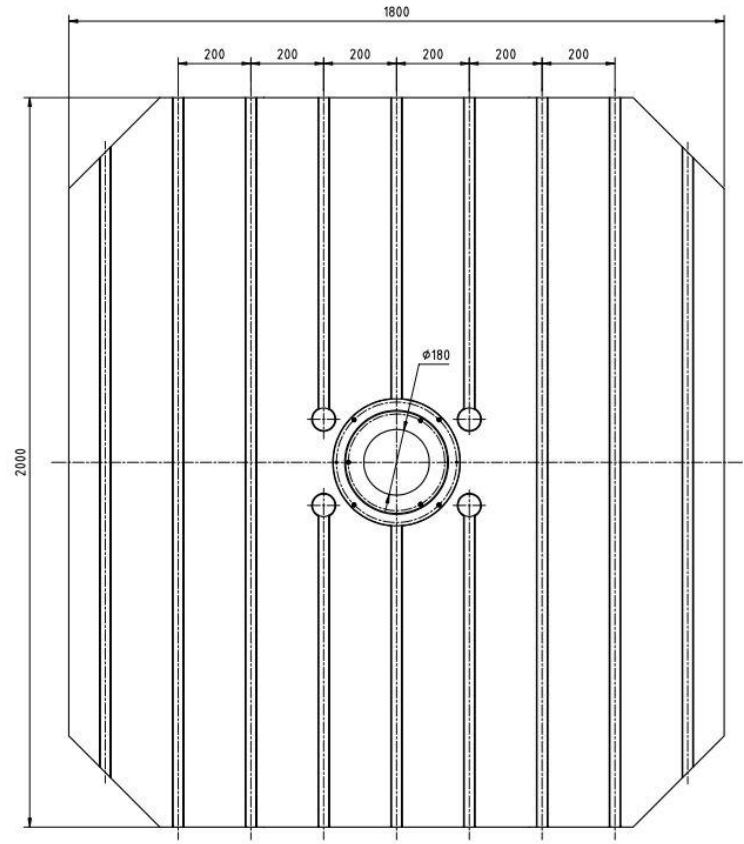
1250x1400 T Slot (OP)



HUP160 HUP160/D Pa llet



**1600×1800 T Slot
(STD)**



1800×2000 T Slot (20t OP)



Structure feature-Bed (one-piece)

one-piece bed, high accuracy, easy to Commissioning



HUP80 HUP80/D

Model	Axis	Size (mm)		class
		OD	lead	
HUP80	Z	50	12	G3

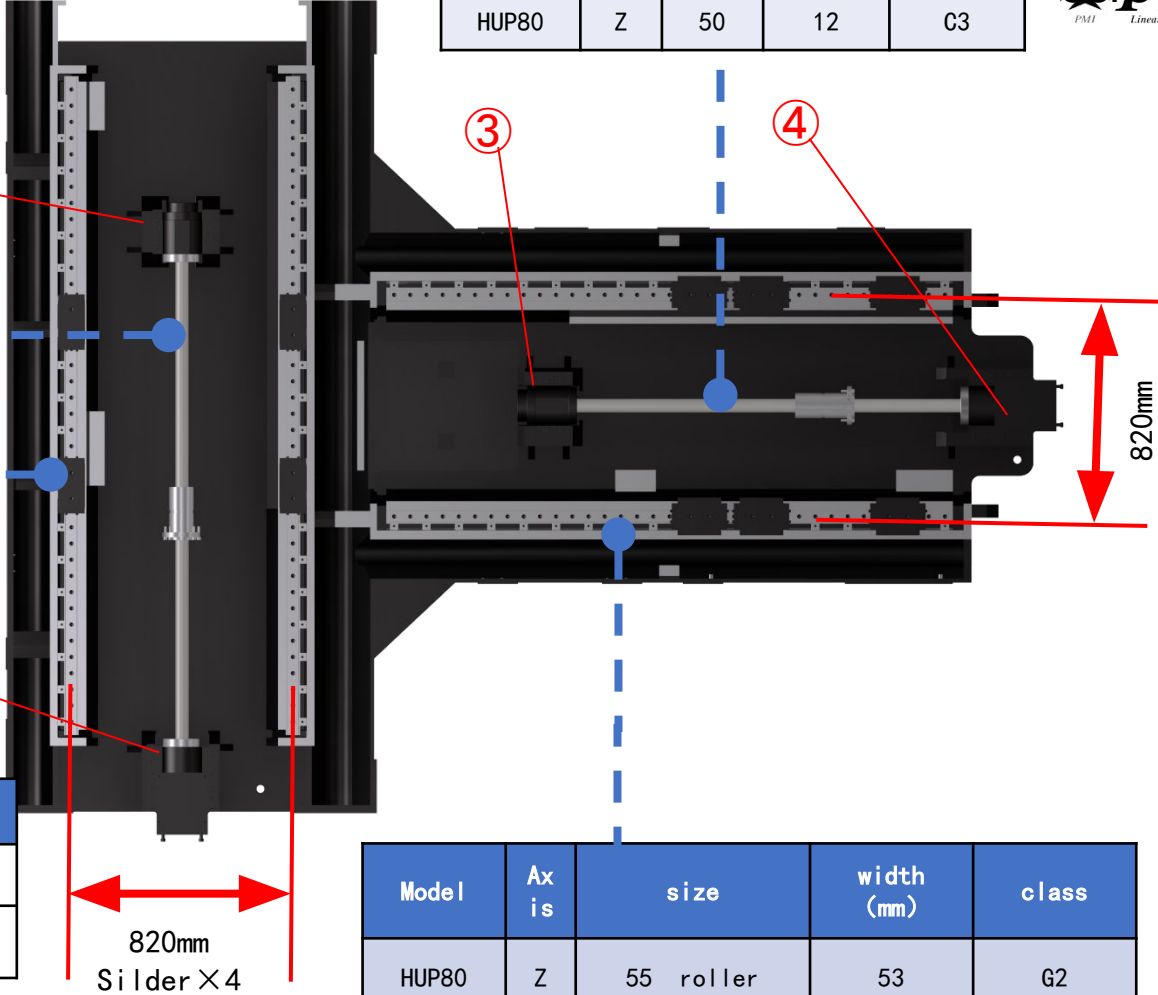


Model	Axis	Size (mm)		class
		OD	lead	
HUP80	X	50	12	G3

Model	Axis	size	width (mm)	class
HUP80	X	55 roller	53	G2

Bearing NSK

Bearing	①	②	③	④
Unit	4	4	4	4
ID&ODmm	Φ 40*Φ 90	Φ 40*Φ 90	Φ 40*Φ 90	Φ 40*Φ 90



Large span,
high rigidity
support

Model	Axis	size	width (mm)	class
HUP80	Z	55 roller	53	G2

Linear
Guideway
Schneberg

Structure feature-Bed (one-piece)

one-piece bed, high accuracy, easy to Commissioning



HUP100 HUP100/D

Model	Axis	Size (mm)		class
		OD	lead	
HUP100	Z	55	12	G3

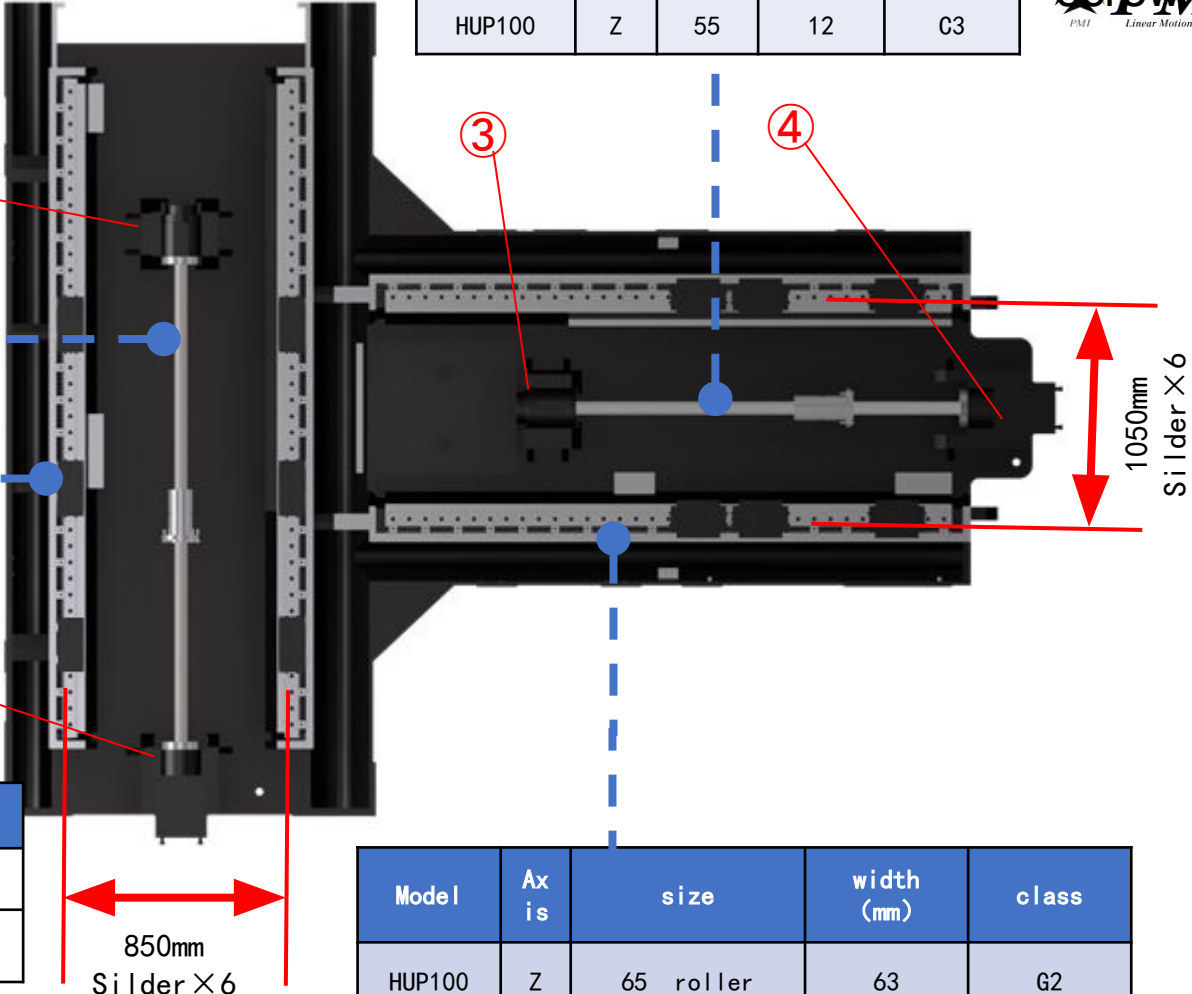


Model	Axis	Size (mm)		class
		OD	lead	
HUP100	X	55	12	G3

Model	Axis	size	width (mm)	class
HUP100	X	55 roller	53	G2

Bearing NSK

Bearing	①	②	③	④
Unit	4	4	4	4
ID&ODmm	Φ 45*Φ 100	Φ 45*Φ 100	Φ 45*Φ 100	Φ 45*Φ 100



Large span, high rigidity support

Model	Axis	size	width (mm)	class
HUP100	Z	65 roller	63	G2

Linear Guideway
Schneberg

Structure feature-Bed (one-piece)

one-piece bed, high accuracy, easy to Commissioning



HUP125 HUP125/D

Model	Axis	Size (mm)		class
		OD	lead	
HUP125	Z	55	12	G3

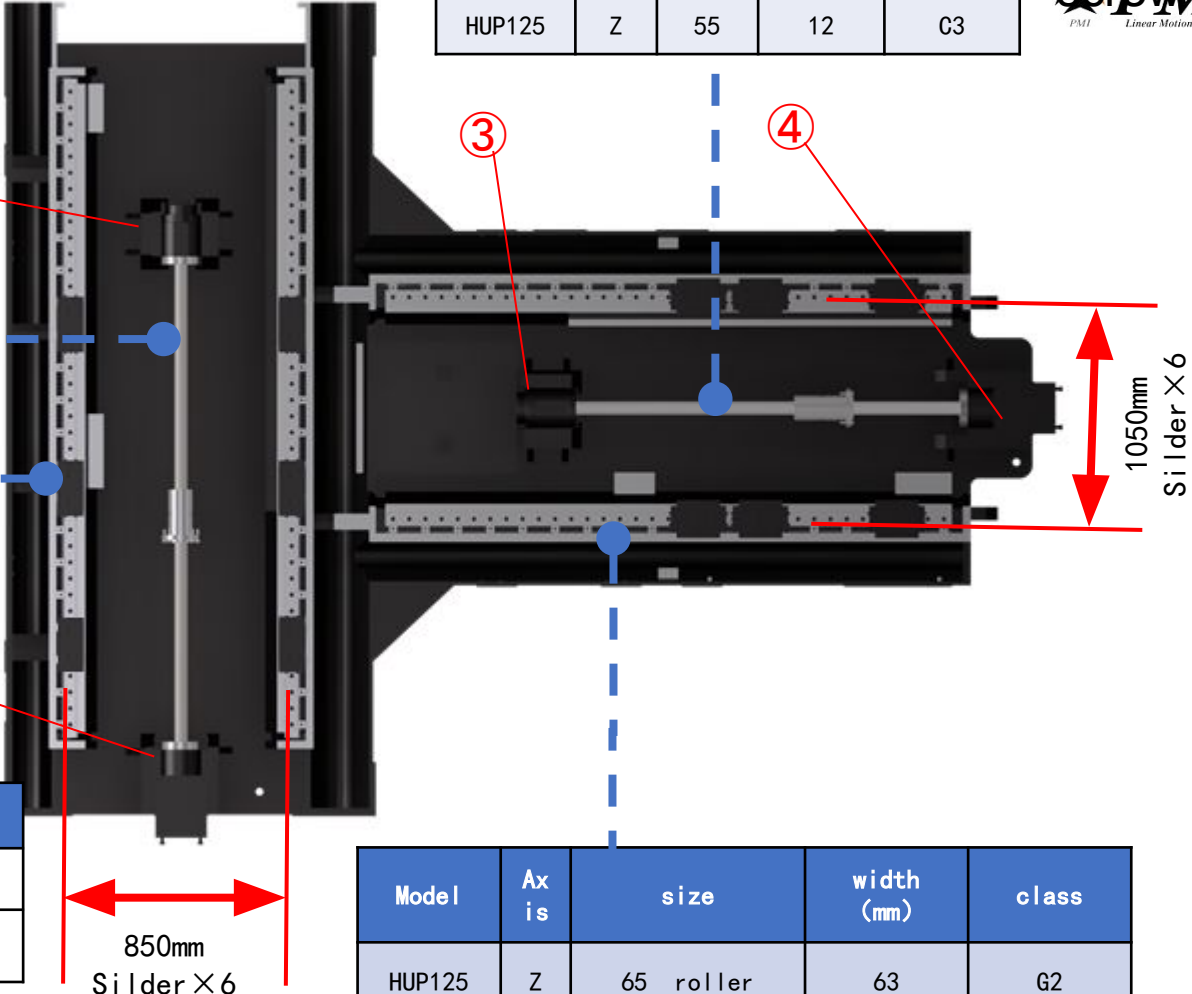


Model	Axis	Size (mm)		class
		OD	lead	
HUP125	X	55	12	G3

Model	Axis	size	width (mm)	class
HUP125	X	55 roller	53	G2

Bearing NSK

Bearing	①	②	③	④
Unit	4	4	4	4
ID&ODmm	Φ 45*Φ 100	Φ 45*Φ 100	Φ 45*Φ 100	Φ 45*Φ 100



Large span,
high rigidity
support

Model	Axis	size	width (mm)	class
HUP125	Z	65 roller	63	G2

Linear
Guideway
Schneberg

Structure feature-Bed (Two-piece)



HUP160 HUP160/D

model	axis	size (mm)		class
		OD	lead	
HUP160	X	55	16	C3

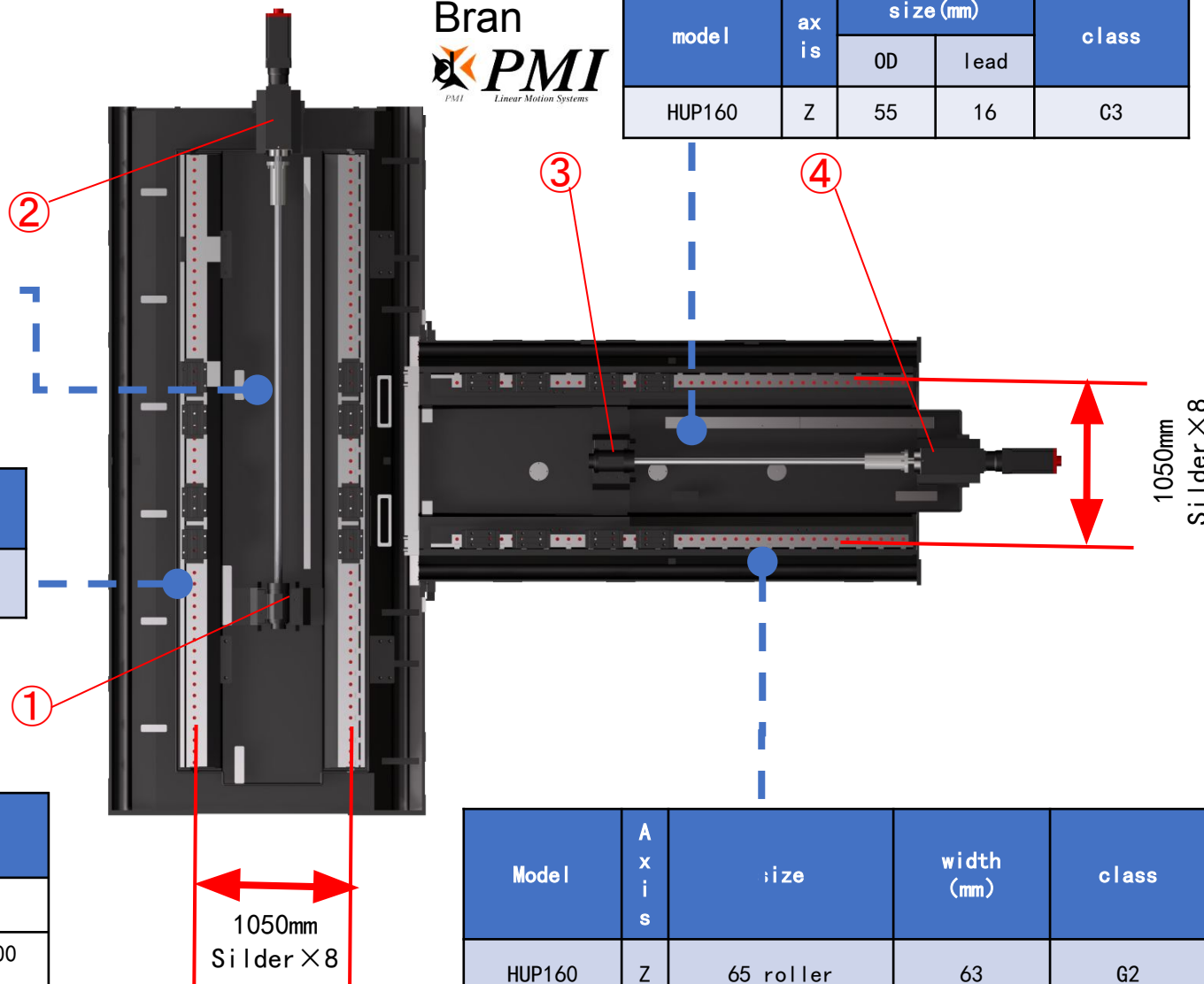
机型	轴	线轨规格	width (mm)	Class
HUP160	X	65 roller	63	G2

Brand
NSK

bearing	①	②	③	④
No.	4	4	4	4
OD&IDmm	Φ 45*Φ 100	Φ 50*Φ 100	Φ 45*Φ 100	Φ 50*Φ 100



model	axis	size (mm)		class
		OD	lead	
HUP160	Z	55	16	C3



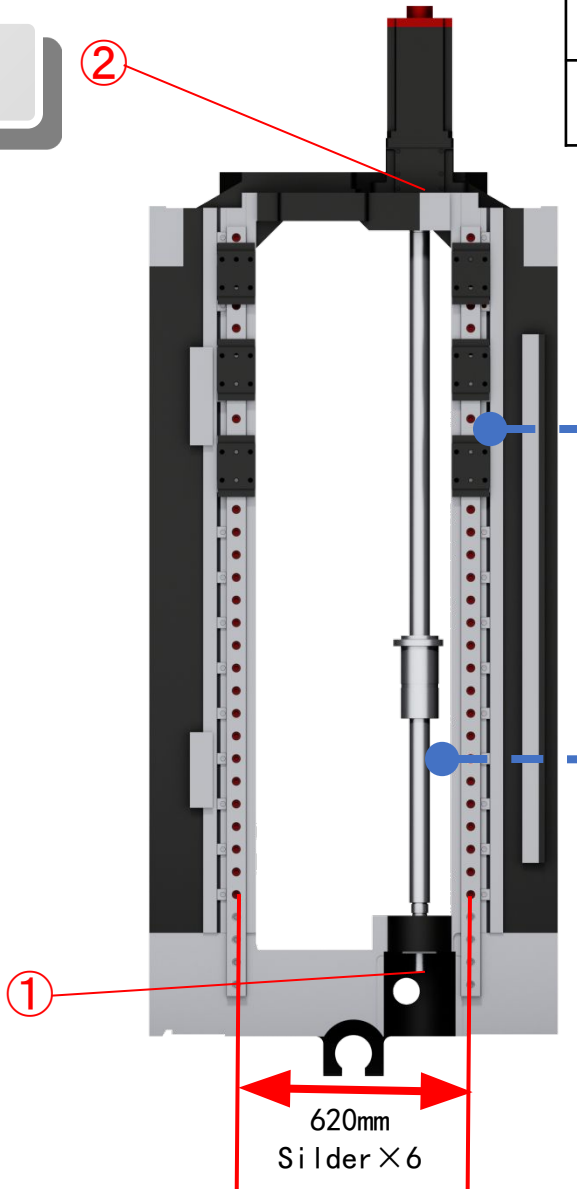
Model	Axis	size	width (mm)	class
HUP160	Z	65 roller	63	G2

Linear
Guideway
Schneberg



Structure feature-Column

HUP80 HUP80/D



bearing	①	②
Unit	4	3
ID&ODmm	Φ 40*Φ 72	Φ 45*Φ 100

Bearing
NSK



Model	Axis	size	width (mm)	class
HUP80	Y	55 roller	53	G2

Linear
Guideway
Schneberg

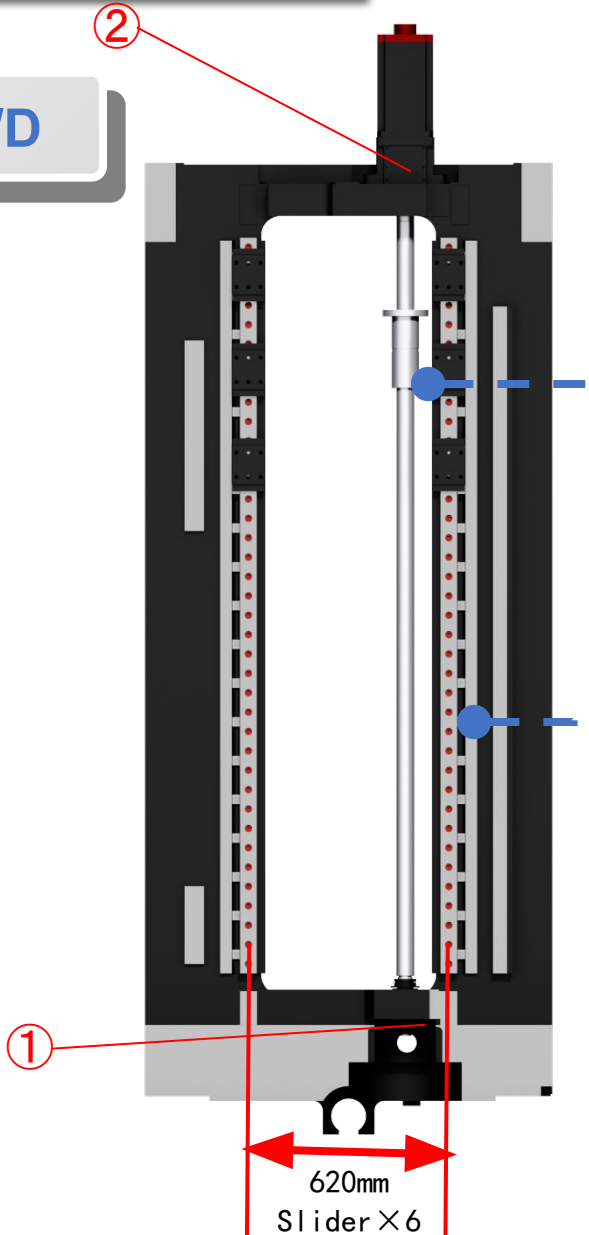
Model	Axis	Size (mm)		class
		OD	lead	
HUP80	Y	50	12	C3



Gantry type coulumn, Suppressing thermal deformation

Structure feature-Column

HUP100 HUP100/D



bearing	①	②
Unit	4	3
ID&ODmm	Φ 40*Φ 72	Φ 45*Φ 100

Bearing
NSK



Model	A x i s	size	width (mm)	class
HUP100	Y	55 roller	53	G2

Linear
Guideway
Schneberg

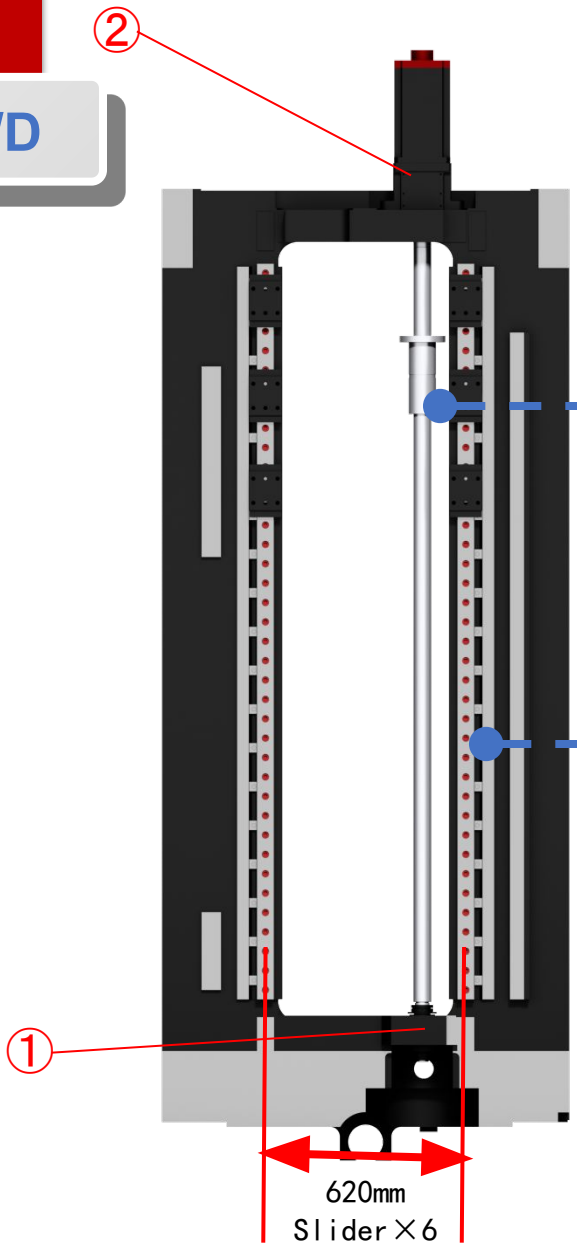
Model	A x i s	Size (mm)		class
		OD	lead	
HUP100	Y	55	12	G3



620mm
Slider X 6

Structure feature-Column

HUP125 HUP125/D



620mm
Slider X 6

bearing	①	②
Unit	4	3
ID&ODmm	Φ 40*Φ 72	Φ 45*Φ 100

Bearing
NSK



Model	A x i s	size	width (mm)	class
HUP125	Y	55 roller	53	G2

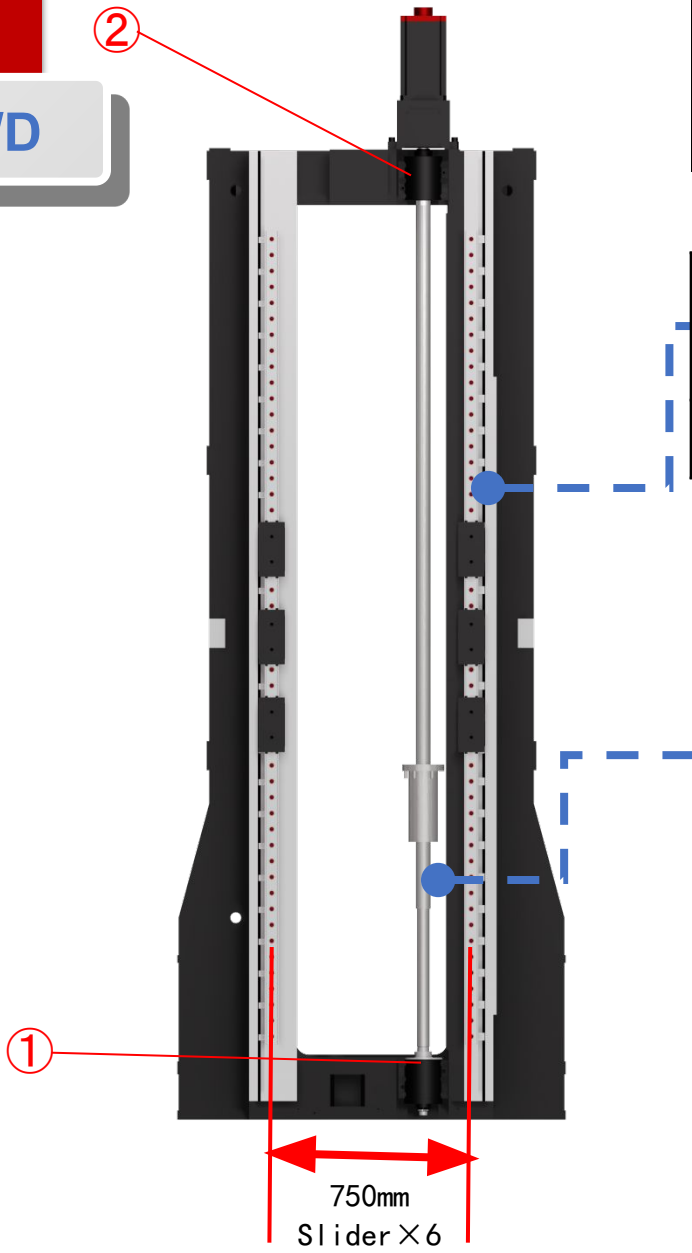
Linear
Guideway
Schneberg

Model	A x i s	Size (mm)		class
		OD	lead	
HUP125	Y	55	12	C3



Structure feature-Column

HUP160 HUP160/D



bearing	①	②
Unit	4	3
ID&ODmm	Φ40*Φ90	Φ50*Φ100

Bearing
NSK

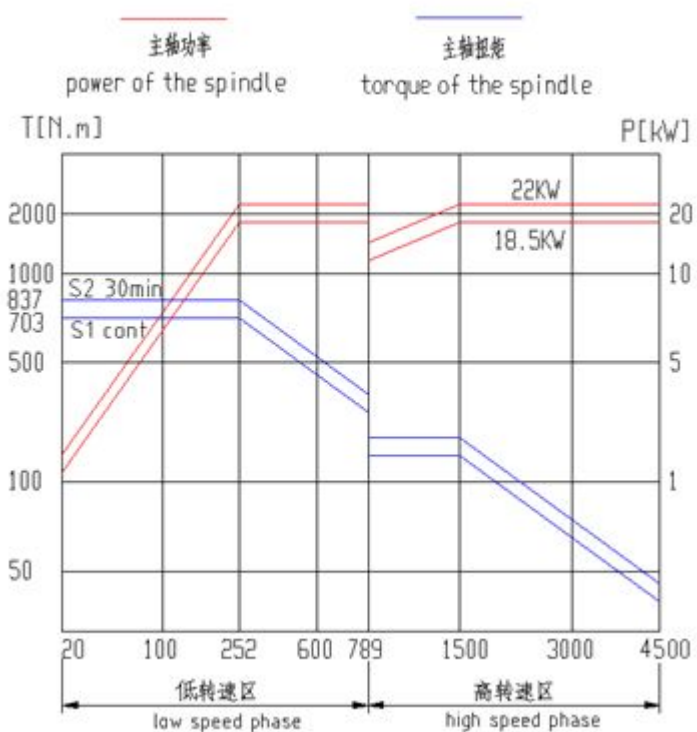


Model	A x i s	size	width (mm)	class
HUP160	Y	55 roller	53	G2

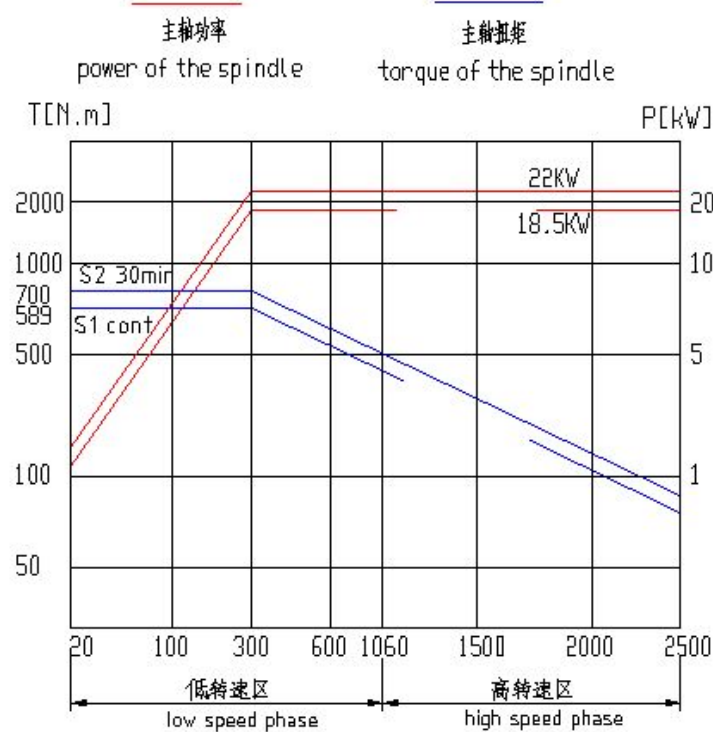
Linear
Guideway
Schneberg

Model	A x i s	Size (mm)		class
		OD	lead	
HUP160	Y	55	16	G3

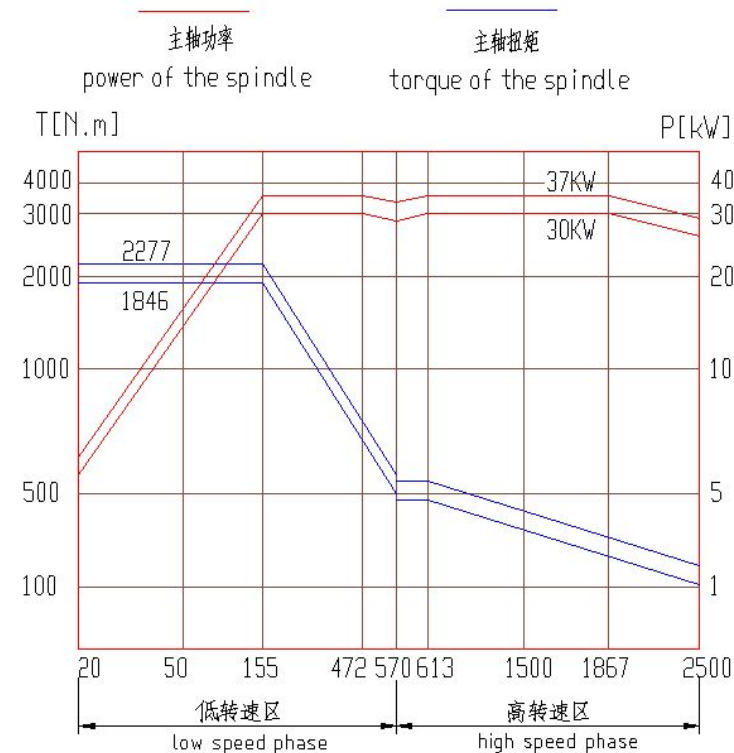




HUP80/100/125



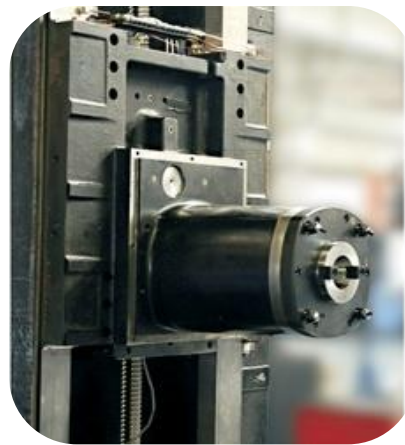
**HUP80/100/125
With W axis**



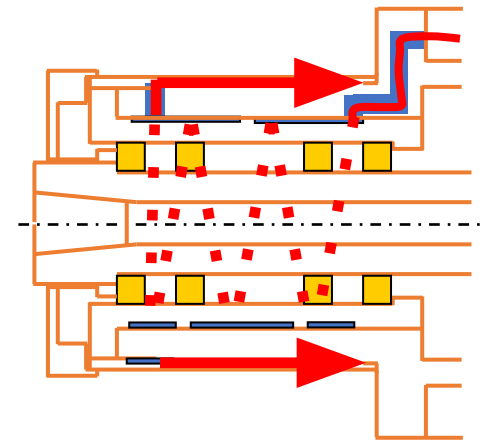
HUP160



The integrated casting headstock is equipped with a circulating cooling device, which can quickly remove heat from gears and bearings with minimal thermal deformation. The headstock adopts oil air lubrication (except for HUP160 which is lubricated with grease) and short roller bearings.

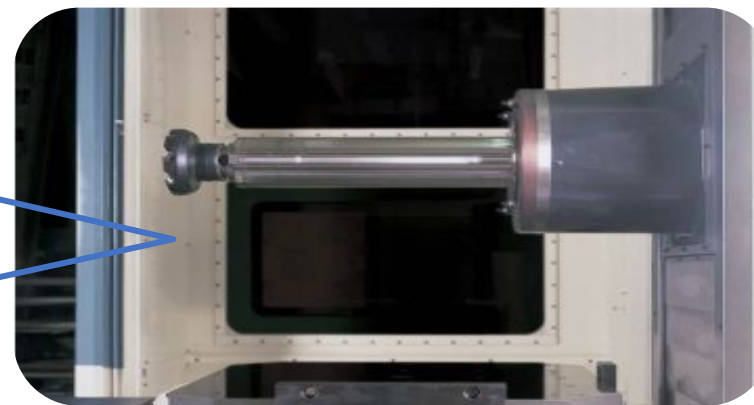


headstock



Circulating cooling

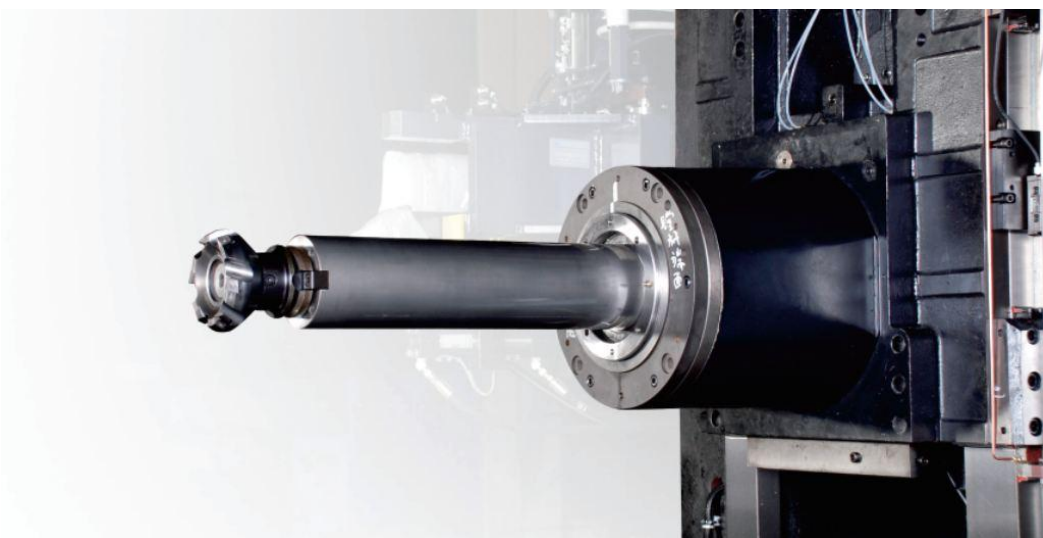
Bigger bearing size, W axis in option, Y axis adopts balancing cylinder to reduce loading on Y ball screw.



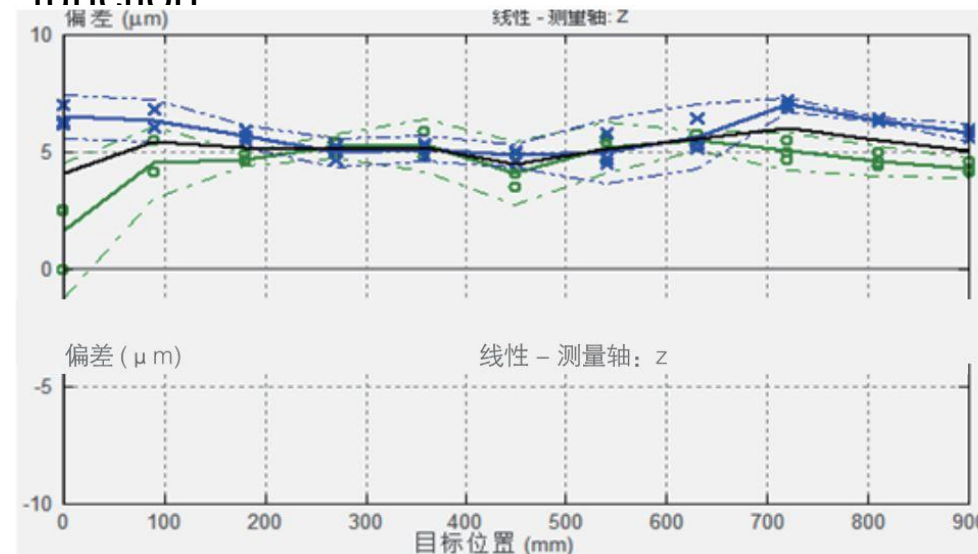
Structure feature—spindle option



W axis in option



Spindle thermal elongation compensation function



lescopical boring bar function is a powerful complement to the traditional horizontal machining center.

According to sensor feedback, instant compensate Z axis coordinate, reduce mechanical deformation. ◦

Model	HUP80	HUP100	HUP125	HUP160
W axis dia.	Φ130(Opt)	φ130(Opt)	φ130(Opt)	φ130
travel	535	535	535	700

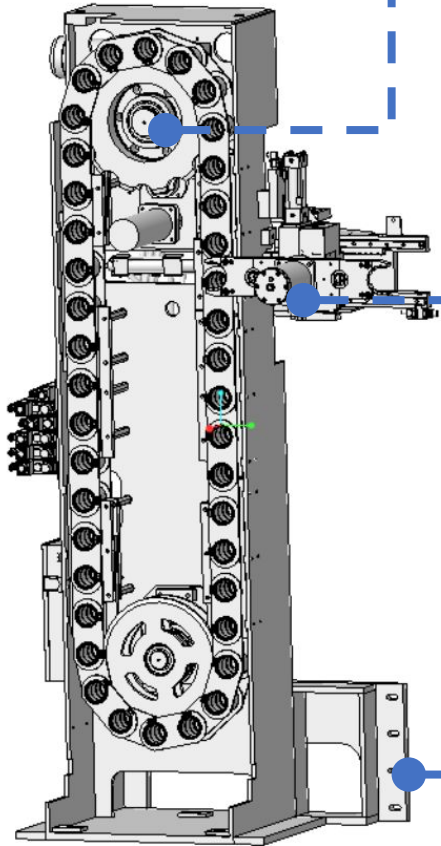
Model	HUP80 HUP80/D	HUP100 HUP100/D	HUP125 HUP125/D	HUP160 HUP160/D
W axis center to table mm	60-910	70-1470 170-1570	70-1470 100-1600	0-1850 120-2120
W axis nose to table center mm	260-1260	300-1650	350-1700	580-2080



Structure feature-ATC



Self made 40T
ATC

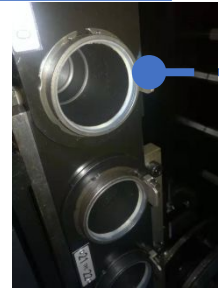


Cam and Motor
drive(STD)

Arm with hydraulic drive

Fixed position tool change, Tool search and automatic tool preparation can be performed during processing, shortening tool change time.

ATC stand fixed onto bed, reliable structure.



Hardened tool holder in ATC

Model	HUP80	HUP100	HUP125	HUP160
Change time(T-T)	7.5s	8.5s		
options	60T,90T,120T			
Change time(C-C)	16	16	18	20



Structure feature-Table

Pallet is positioned by 8 taper pins.



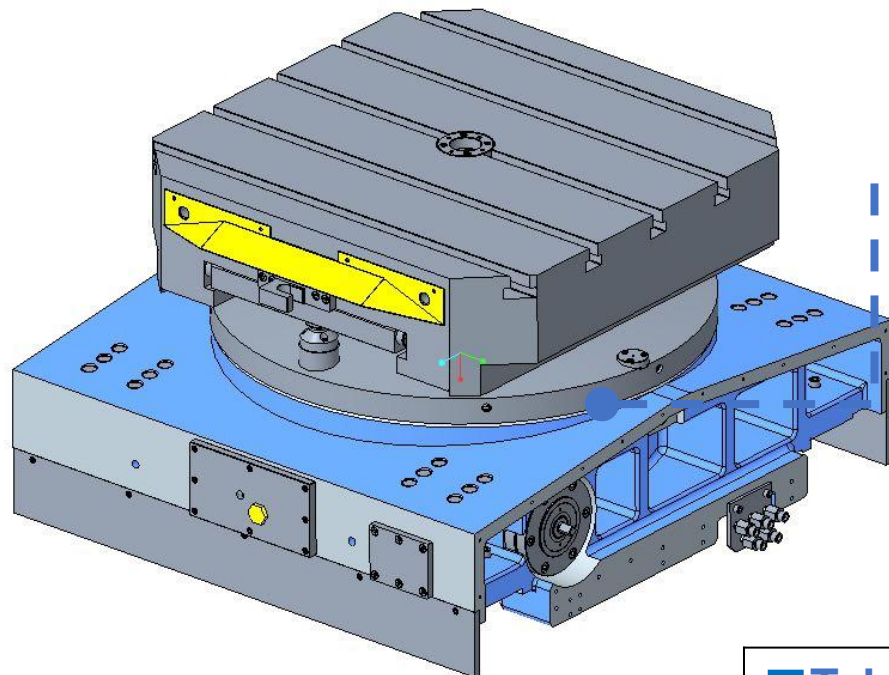
positioning (")	Repeatability (")	Speed (r/min)		Evenly loading (t)	
		8	4	HUP80	6rpm
		HUP100	3rpm	HUP100	3
		HUP125	3rpm	HUP125	3

AC servo control, makes dual direction indexing faster; big diameter curvic coupling ensures excellent table positioning, hydraulic clamping force:9t(HUP80), 12t(HUP100), 12t(HUP125)

0.5MPa compressed air is ejected from the tapered positioning pin to clean the bottom and contact surfaces of the table when the table is



- Indexing 0.001°
- High rigidity and high load capacity
- High rotation accuracy

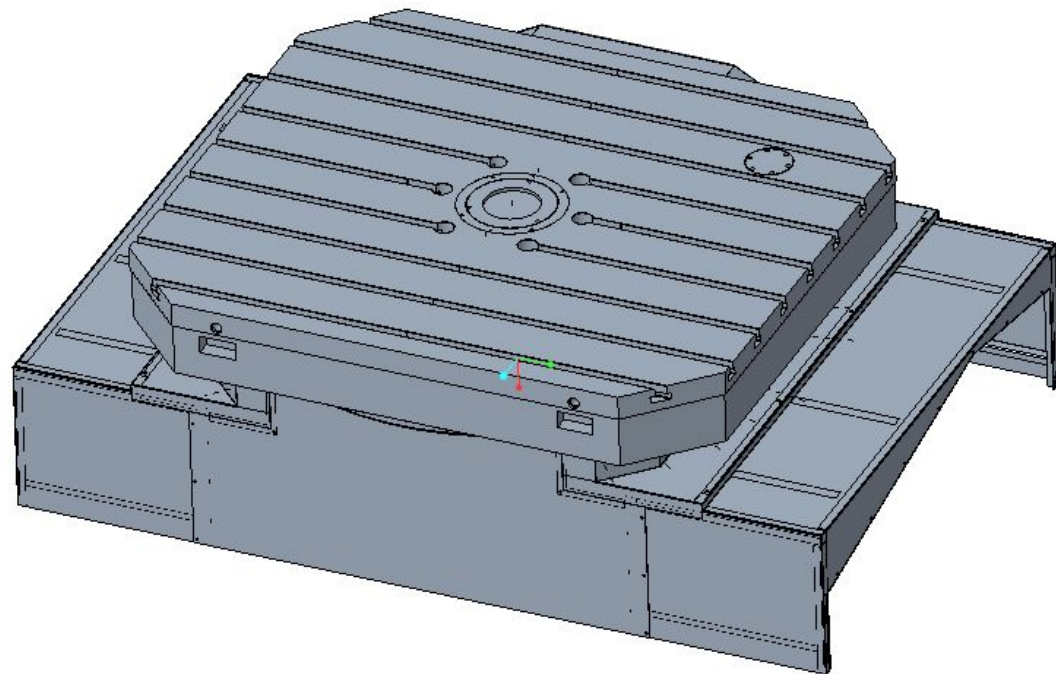


YRTM bearing with angle measurement device

ITable is driven by servo motor through worm gear, hydraulic clamp and dual layer friction plate positioning with good repeatability, hydraulic clamping force: 17t (HUP80), 26.7t (HUP100), 26.7t (HUP125)

position in g (")	Repeatability y (")	Speed (r/min)		Evenly loading (t)	
		Model	Speed	Model	Capacity
10	6	HUP80	6rpm	HUP80	2
		HUP100	3rpm	HUP100	3 (op5)
		HUP125	3rpm	HUP125	3 (op5)

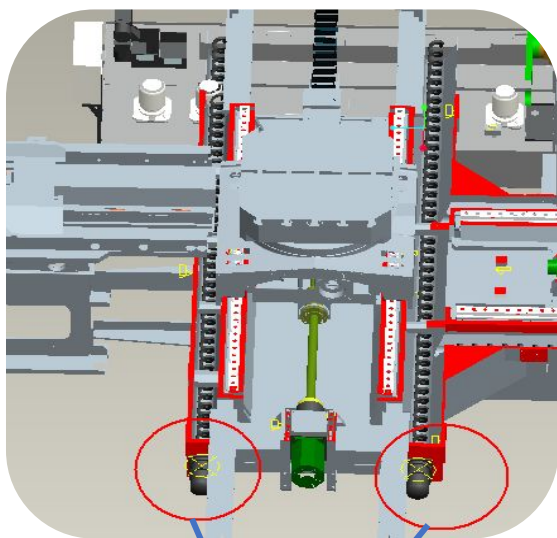




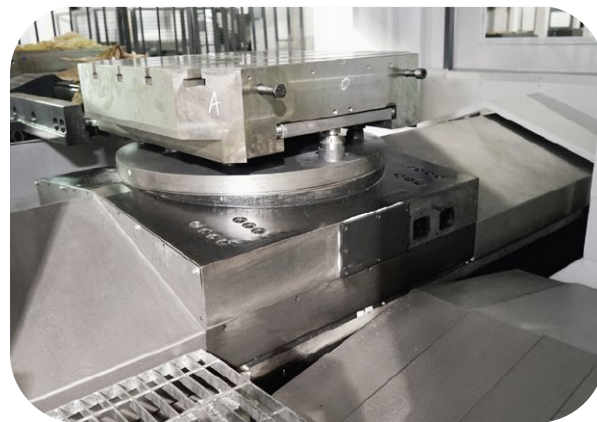
The rotation between the table and the base is driven by a servo motor, which is driven by a large gear ratio reduction box, double gears eliminate clearance, and hydraulic clamping to ensure the cutting rigidity and precise positioning of the table.

positioning (")	Repeatability (")	Speed (r/min)	Evenly loading (t)
10	6	2	20





Two-way spiral chip conveyor can discharge iron chips in time



Large angle guideway cover to avoid iron filings



Structural Features—Three-axes Dual-nut ball Screw



Ball screw-in Z & X axes



Dual-nut ball screw



Structural features—reasonable layout

Three-door electric cabinet, reasonable electrical components layout



Swing type operation box, easy to operate

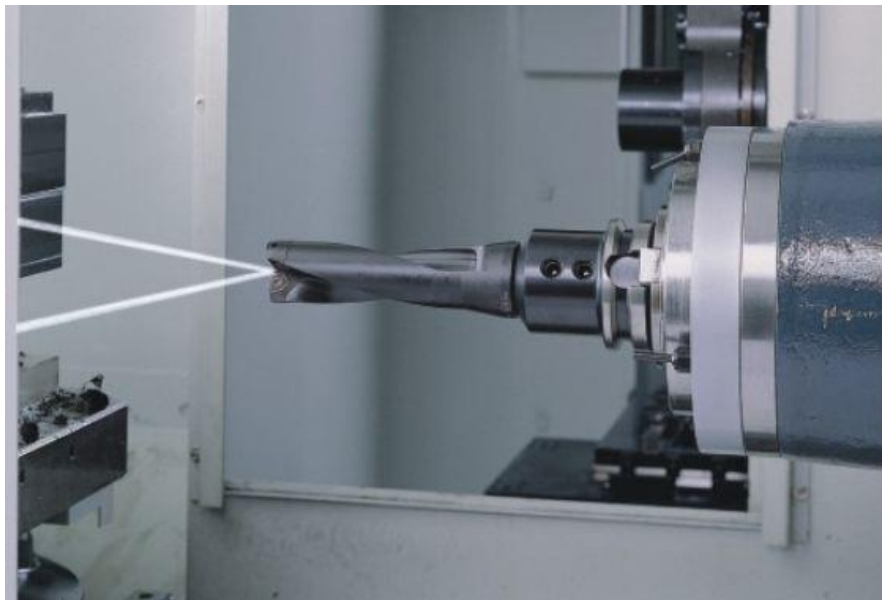




The coolant is sprayed from machine top for workpiece strongly cooling. And take away chips from corner.



Option—CTS



The coolant passes through spindle center and is sprayed from the tip of the tool, which can directly cool the workpiece and the cutting edge, and take away the cutting heat to ensure the processing quality, suitable for parts for deep hole processing.



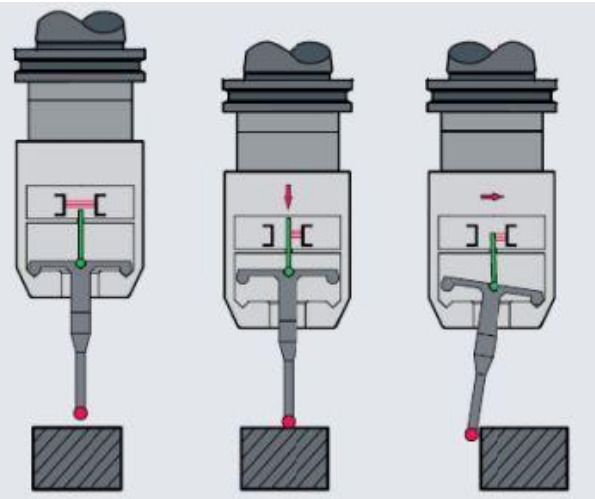
2mpa



3-4、5-6mpa

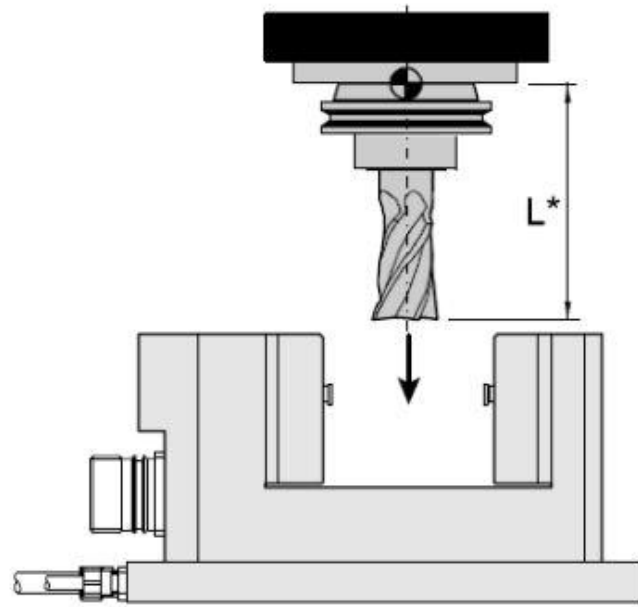


Brand



BRC wireless radio transmission contact type device.





Laser
type

Laser tool setter for detecting the geometry of the tool.



Contact
type

Common used for tool length and diameter.



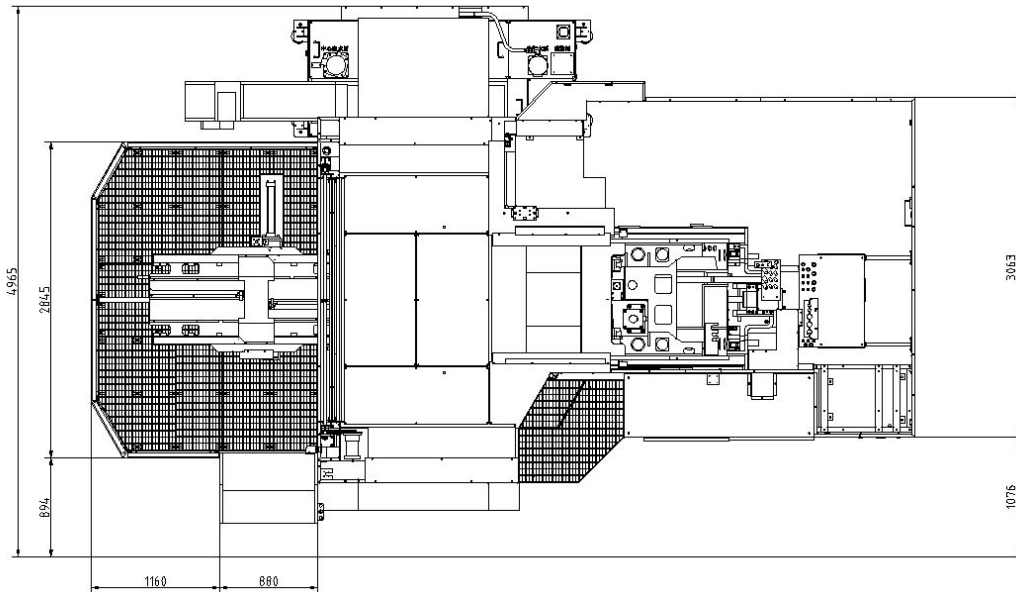
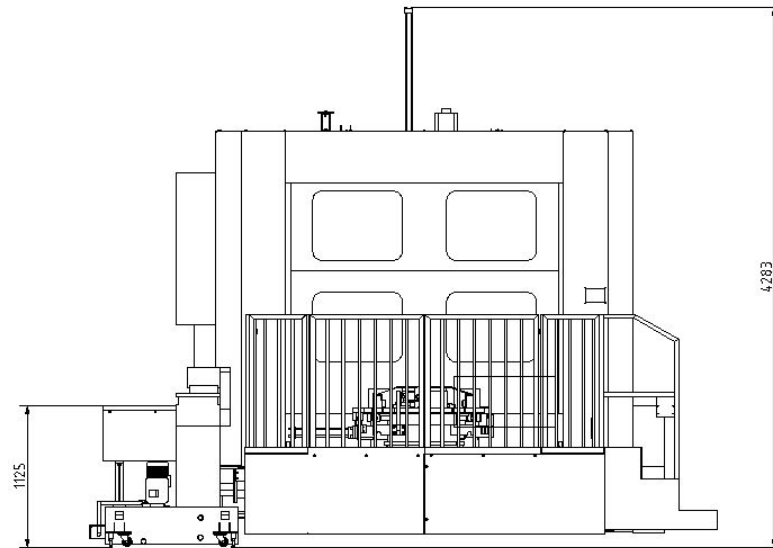
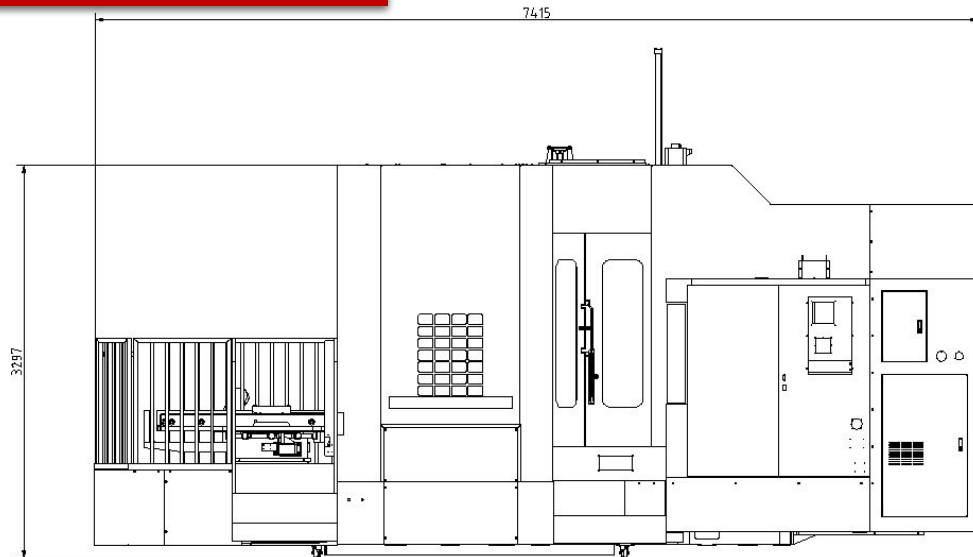
■ Standard:

- Controller:FANUC 0i。
- 40T ATC (BT50, **Except HUP160**)
- Full enclosure splash guard
- External chain type chip conveyor
- Spindle oil chiller
- Spindle air blow
- Auto power off
- Self-diagnostic function
- 3-color signal lamp

■ Options:

- Controller:FANUC 31i、 FANUC 0i(22/26kw) 。
- Controller:SIEMENS828D、 SIEMENS840Ds1。
- Air conditioner
- Stabilizer (100KVA)
- BT50 Spindle(45° pull stud), JT50Spindle,
- BT50 Spindle 6000rpm(except HUP160/D)
- W axis
- BT50 pul stud(45 ° , 60 °)、 JT50 pull stud
- X\Y\Z three axes optical scale(Heidenhain/Fagor)
- Screw table (HUP80)
- Bigger table with T slot
- NC rotary table (0.001° index) 。
- X/Y axes stainless steel guideways cover
- ATC (60T、 90T、 120T)。
- X、 Zaxis stroke extend (only HUP160/D)
- Y axis stroke extend
- 20T NC rotary table (**only HUP160/D**)
- Workpiece probe: BLUM/ Renishaw
- Tool setter: BLUM/ Renishaw
- CTS (2mpa、 3-4mpa、 5-6mpa)
- Shower coolant
- Workpiece air& water gun
- Oil skimmer
- Oil mist collector

HUP80 Dimensions

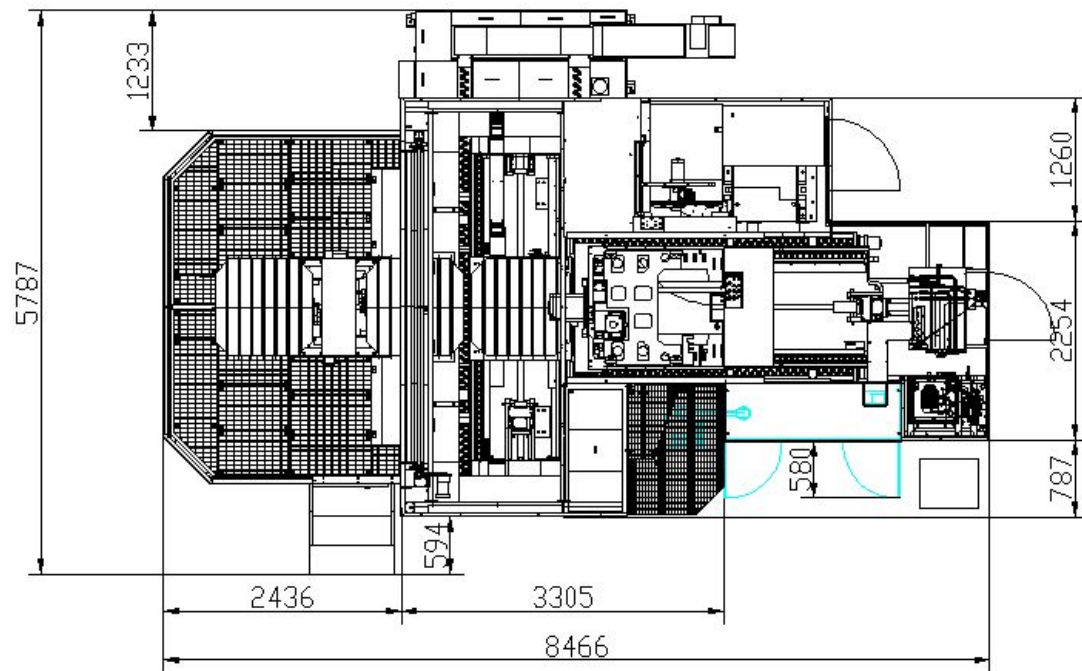
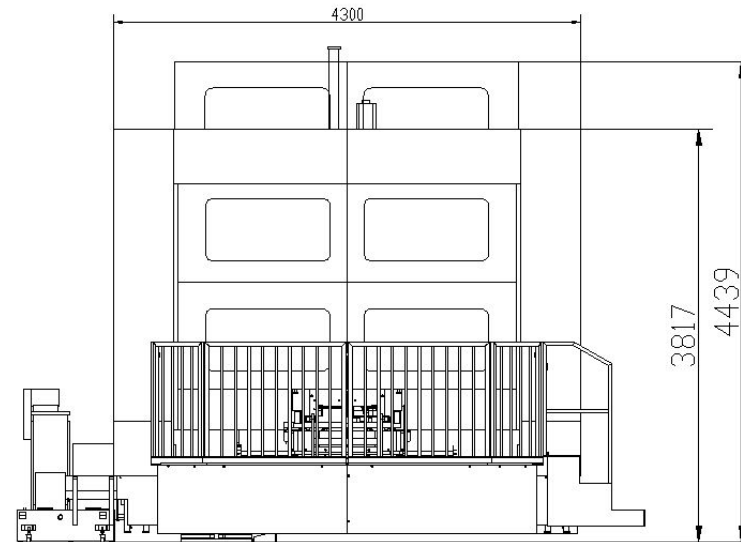
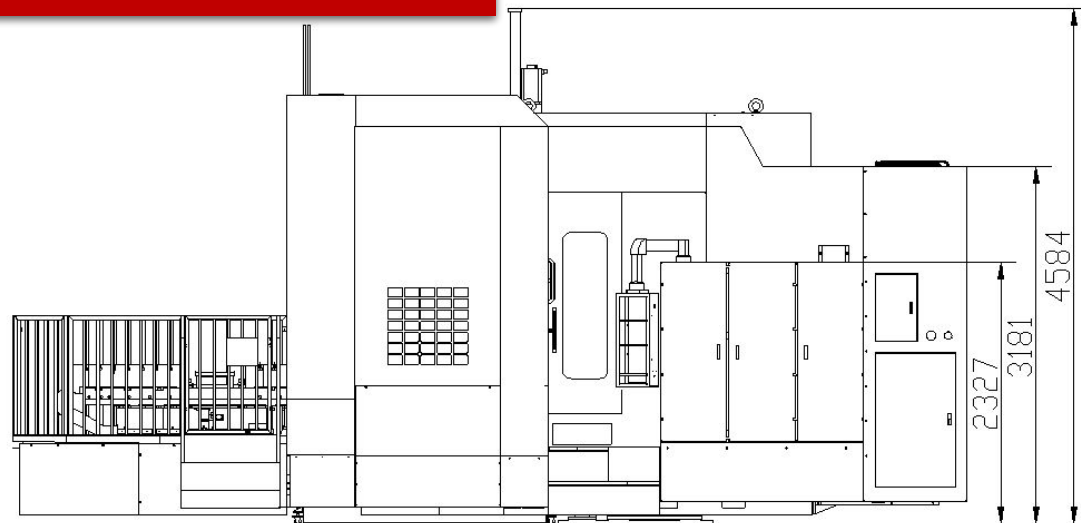


tank removal direction

Tank capacity 680L
Flow 66L/min



HUP100 Dimensions

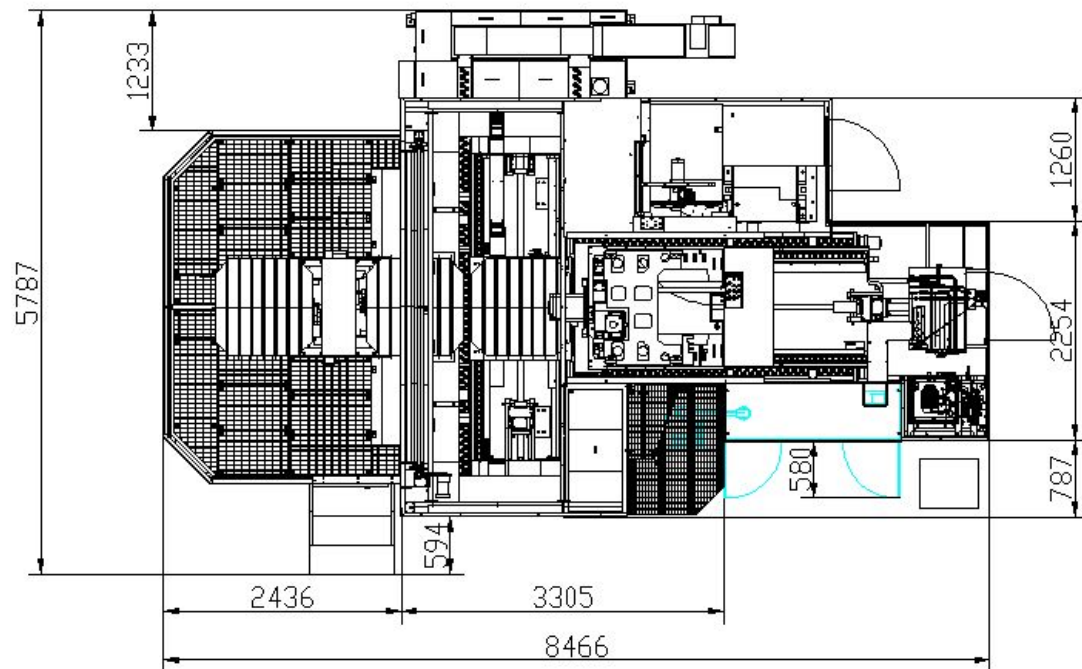
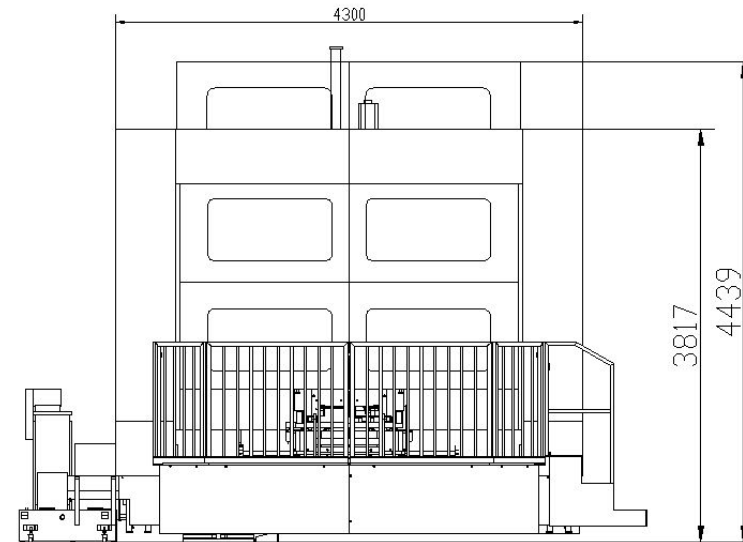
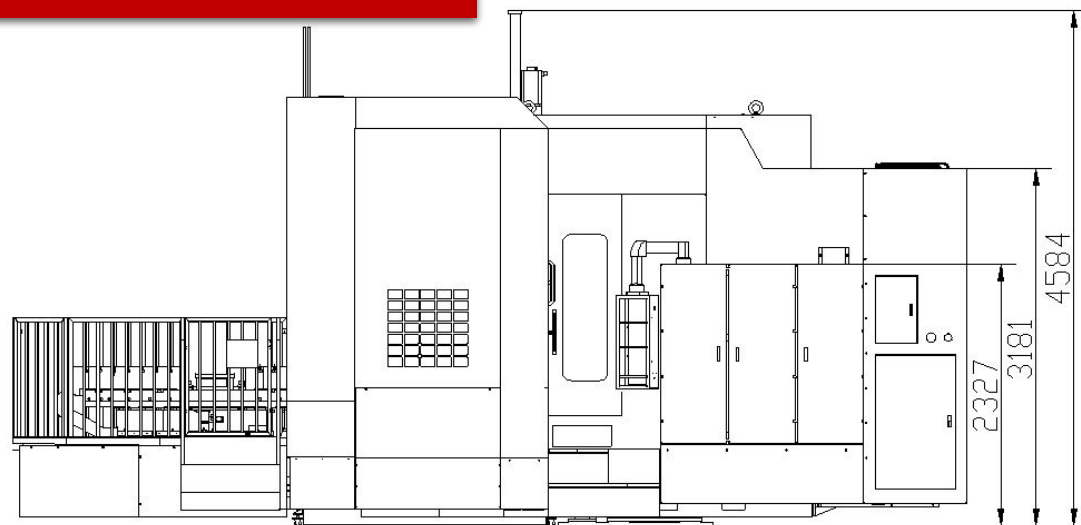


tank removal direction

Tank capacity 680L
Flow 66L/min



HUP125 Dimensions

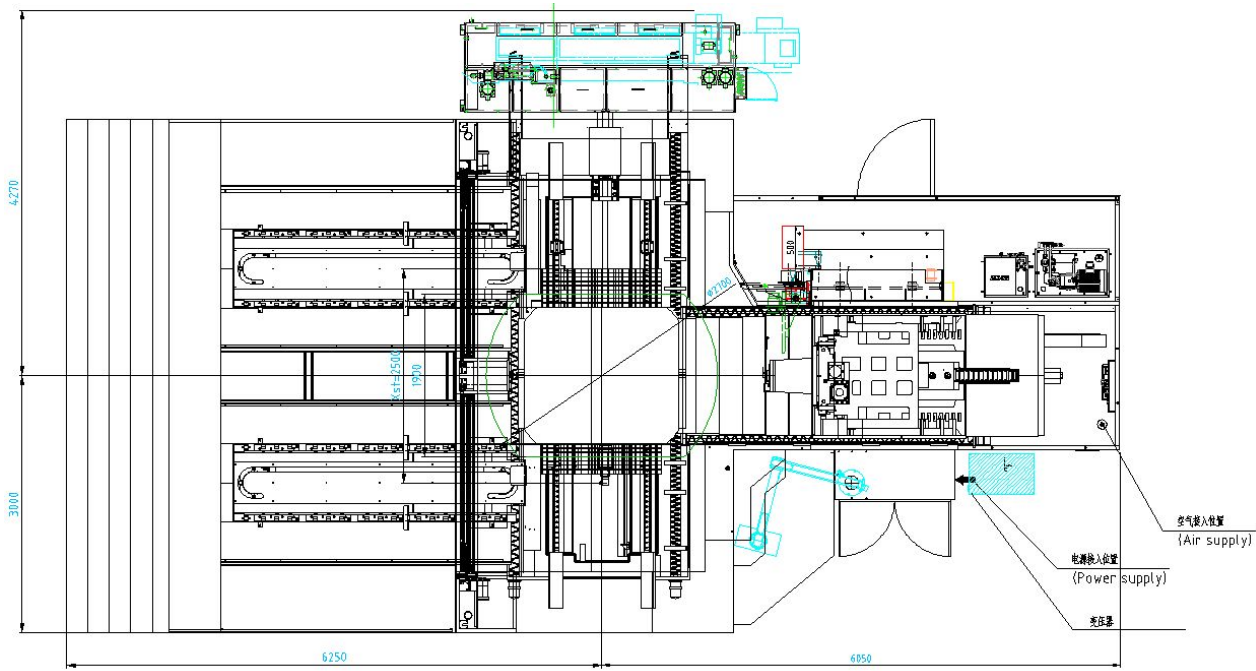
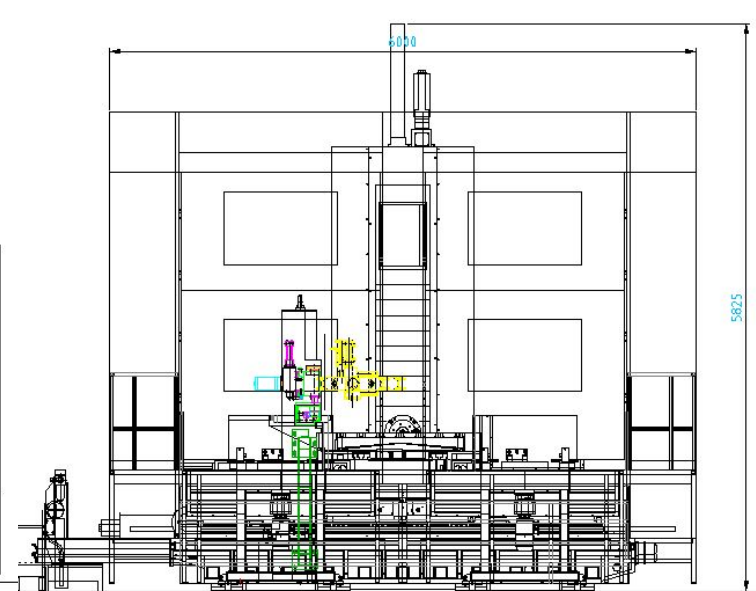
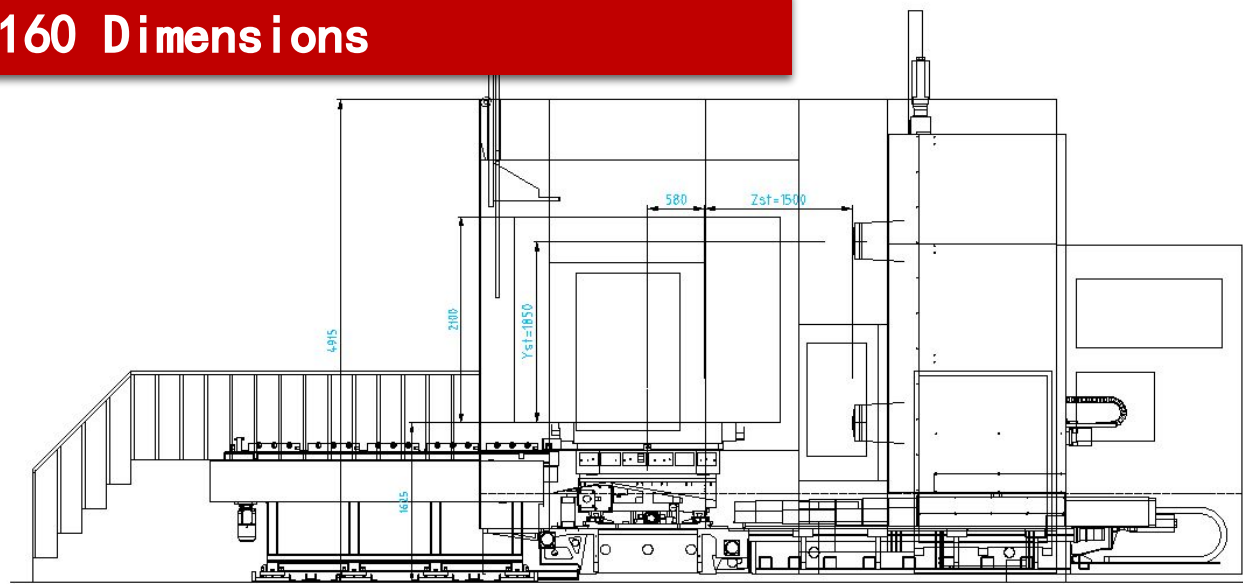


tank removal direction

Tank capacity 680L
Flow 66L/min



HUP160 Dimensions



tank removal direction

Tank capacity 880L
Flow 66L/min





HISKON

Thanks !

www.haitianprecision.com.cn