



MODERN CITIES

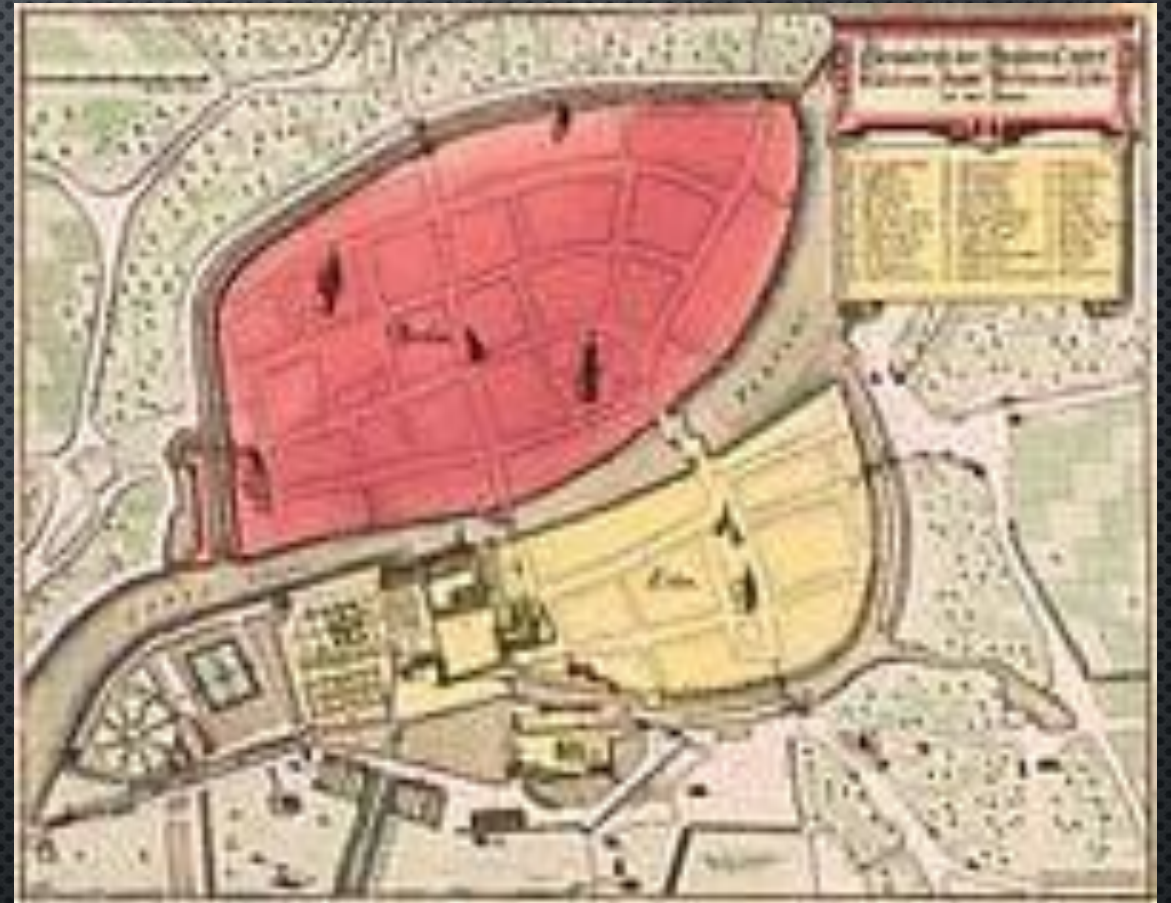
BERLIN



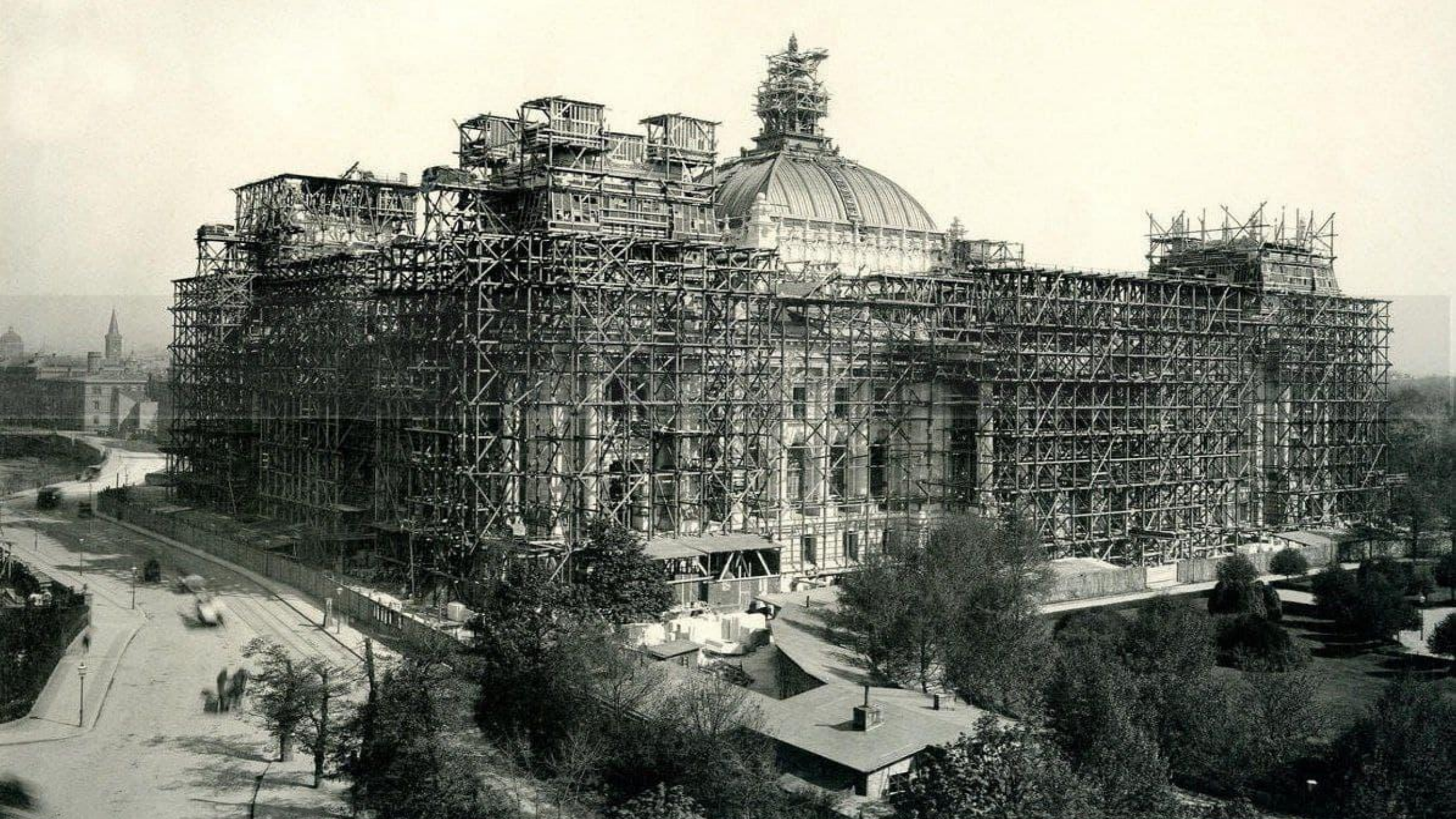
BERLIN-THE CAPITAL AND LARGEST CITY OF GERMANY,
THE FIRST IN TERMS OF POPULATION AND THE FOURTH
LARGEST CITY IN THE EUROPEAN UNION.



- THE YEAR 1237 IS CONSIDERED THE OFFICIAL FOUNDING DATE OF BERLIN[12]. THE CITY ORIGINATED FROM THE PAIRED URBAN SETTLEMENT OF BERLIN - KELLN[13]. KELLN WAS LOCATED ON AN ISLAND ON THE RIVER SPREE, AND BERLIN WAS OPPOSITE IT, ON THE EASTERN SHORE. KELLN WAS FIRST MENTIONED IN DOCUMENTS IN 1237 (28.10), BERLIN - IN 1244 (26.01). IN 1307, BOTH CITIES WERE UNITED AND A COMMON TOWN HALL WAS BUILT.







The Berlin metropolitan area is home to 3,980,837 people (August 1, 2017) on an area of 891.85 km². The population density in the city is 4463 people per square kilometer.







THE MAJORITY OF BELIEVERS ARE LUTHERANS, THE LARGEST LUTHERAN DENOMINATION IS THE EVANGELICAL CHURCH OF BERLIN-BRANDENBURG-SILESIAN UPPER LUSATIA



Berlin is a major transport hub; a network of canals connects the city with the rivers Elbe and Oder. Berlin has a complex and diverse transport infrastructure.











Thank you for your
attention