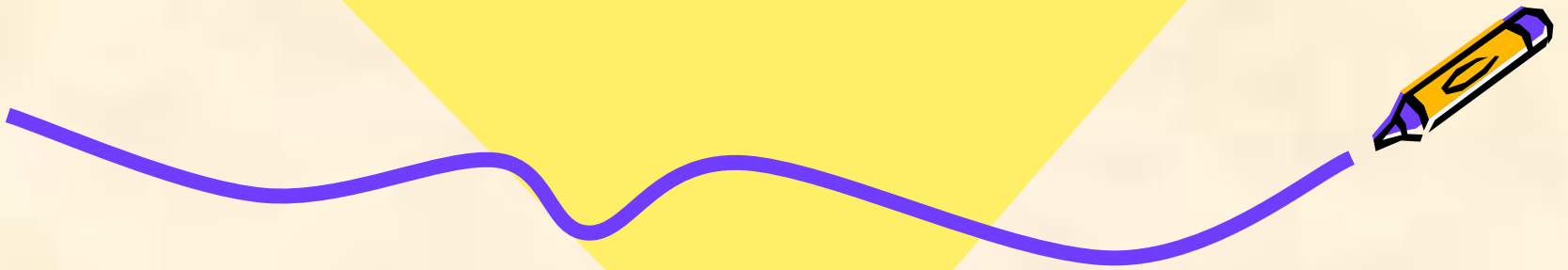
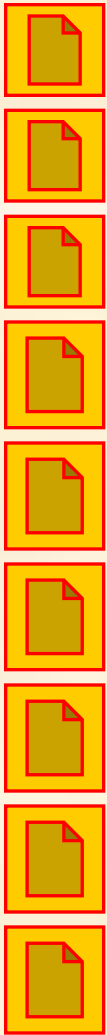


London is the capital  
of Great Britain





BIG BEN

BUCKINGHAM PALACE

PICCADILLY CIRCUS

THE TOWER OF LONDON

THE HOUSES OF PARLIAMENT

TRAFALGAR SQUARE

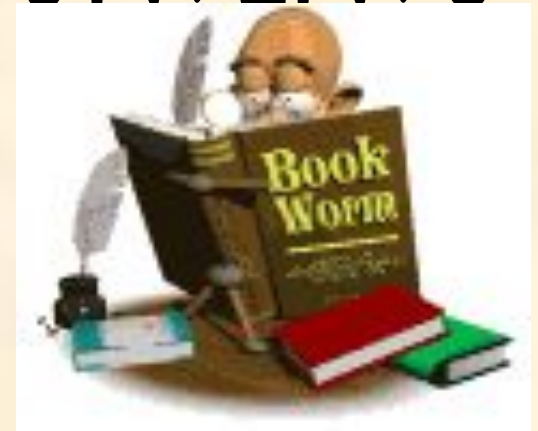
WESTMINSTER ABBEY

London is the capital of Great Britain

Famous sights of London.

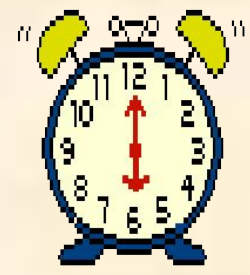
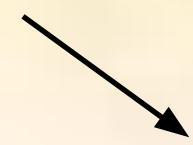


# CONTENTS



BIG BEN

Tourists in London always want to visit Westminster and see Big Ben. They want to see the clock in its tower and to hear the bells. Big Ben is one of the most famous clocks in the world. Big Ben is really a bell. You hear it every hour. It is a big bell. It weighs 13,720 kilograms.



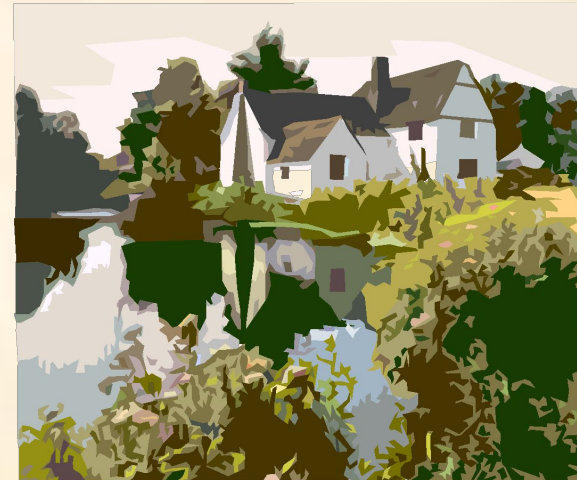
# BUCKINGHAM PALACE

- This is Buckingham Palace - the place where British kings and queens live when they are in London.
- Important visitors often go to the palace. They meet Queen Elizabeth and the royal family inside the palace.
- They stand outside and see the Changing of the Guard. It happens every day at 11.30 a.m.



# PICCADILLY CIRCUS

- Piccadilly Circus is the meeting point of six streets.
- We've just passed Piccadilly Circus and now we are making our way to Buckingham Palace. Look right. We are passing Hyde Park.
- It's a very democratic park.



# THE TOWER OF LONDON

You can see the Tower of London from the river Thames. The Tower is very old. The tall building is the White Tower, the oldest part of the Tower of London. The Bloody Tower is near the river. You do not see blood there today. But the Bloody Tower has a history of blood - the blood of men, women and even children.



# THE HOUSES OF PARLIAMENT

The famous clock Big Ben stands near the Houses of Parliament. The country's leaders speak in the Houses of Parliament. The Houses of Parliament stand beside the river Thames. You can also see Big Ben and the Houses of Parliament from Westminster Bridge.



TRAFALGAR  
SQUARE

On the column in the centre there is a statue of Admiral Nelson who defeated the French at the Battle of Trafalgar in 1805. To the left of us you can see the National Gallery. It has a fine collection of European paintings.





# WESTMINSTER ABBEEY

Westminster Abbey is a symbol of England. It's a royal church. The legend says that Westminster Abbey was founded by St Peter himself. We know that Westminster Abbey was built by King Edward in 1065. The coronation of all British Kings and Queen takes place in Westminster Abbey.

