

User Interface Directions

Joe Belfiore
Group Program Manager
Windows User Interface
Microsoft Corporation



User Interface Goals

For Internet add-on

- ◆ **Easy to browse any content or information**
- ◆ **Integration!** (Local, LAN, and Internet)
- ◆ **Better Internet browsing** (system-wide favorites and history, rated content, etc.)
- ◆ **Make your PC more engaging and fun to use, via active content**

Remember: In this talk “Shell” = “Web browser!”

Shell Features Overview

For end users

- ◆ **Web-like view of shell folders**
- ◆ **Integrated Web browsing in the shell**
- ◆ **Improved navigation UI
(history, favorites)**
- ◆ **Enhanced Internet shortcuts (.urls)**
- ◆ **Smart favorites**
- ◆ **Site map**
- ◆ **Ratings**
- ◆ **Themes**

Why You Should Care

- ◆ **If you have a Web site:** exploit all these in your HTML
- ◆ **If you are writing Web authoring tools:** support all these in your toolset
- ◆ **If you are a Win32[®] productivity application or utility:** there are new shell extensibility mechanisms, controls enhancements, and UI paradigms that you may want to use; and, you should rethink how your application's folder should appear in the shell
- ◆ **If you are looking for new product ideas or new value-add for existing projects:** consider what you could do with themes

Web-Like View Of Folders

- ◆ Single-click activation
- ◆ Rich description of folders (HTML/...)
- ◆ Folder views can be easily customized
- ◆ Supports all the programmability of Sweeper Web pages (Active Controls, Active Documents etc.)



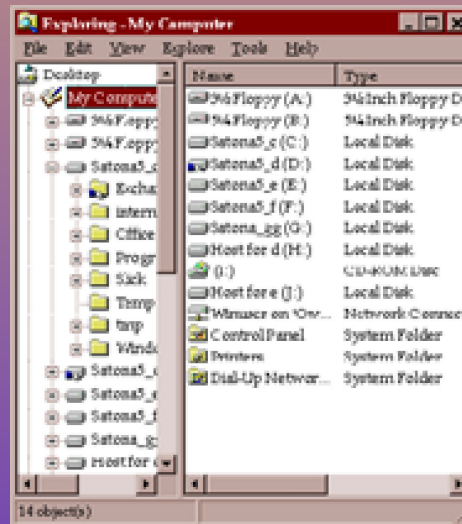
In your applications: Create custom HTML views of your application folder! You can include hyperlinks, live Active Controls, Help text, support info, etc.

Integration

- ◆ Internet Explorer + Shell Explorer = **browsing the Web using the shell**
- ◆ No separate Internet browser is required



+



=



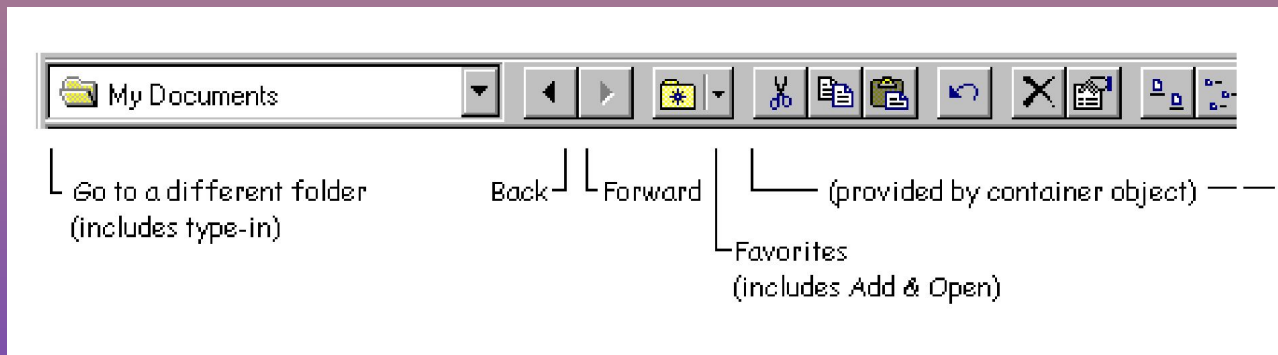
Internet Explorer

Shell Explorer

Explorer for
Internet Add-On

Better Navigation UI

- ◆ Per-window (session) history list
- ◆ Back/Next
- ◆ Favorites
- ◆ “Go” menu consistent with Internet Explorer



In your applications: You can provide Web-like navigation UI (hyperlinks) and include Back/Next buttons via our hyperlink interfaces

Enhanced Internet Shortcuts

◆ Rich properties

- Last visited
- Last changed
- What's new
- Author
- Description

◆ Per-instance icons

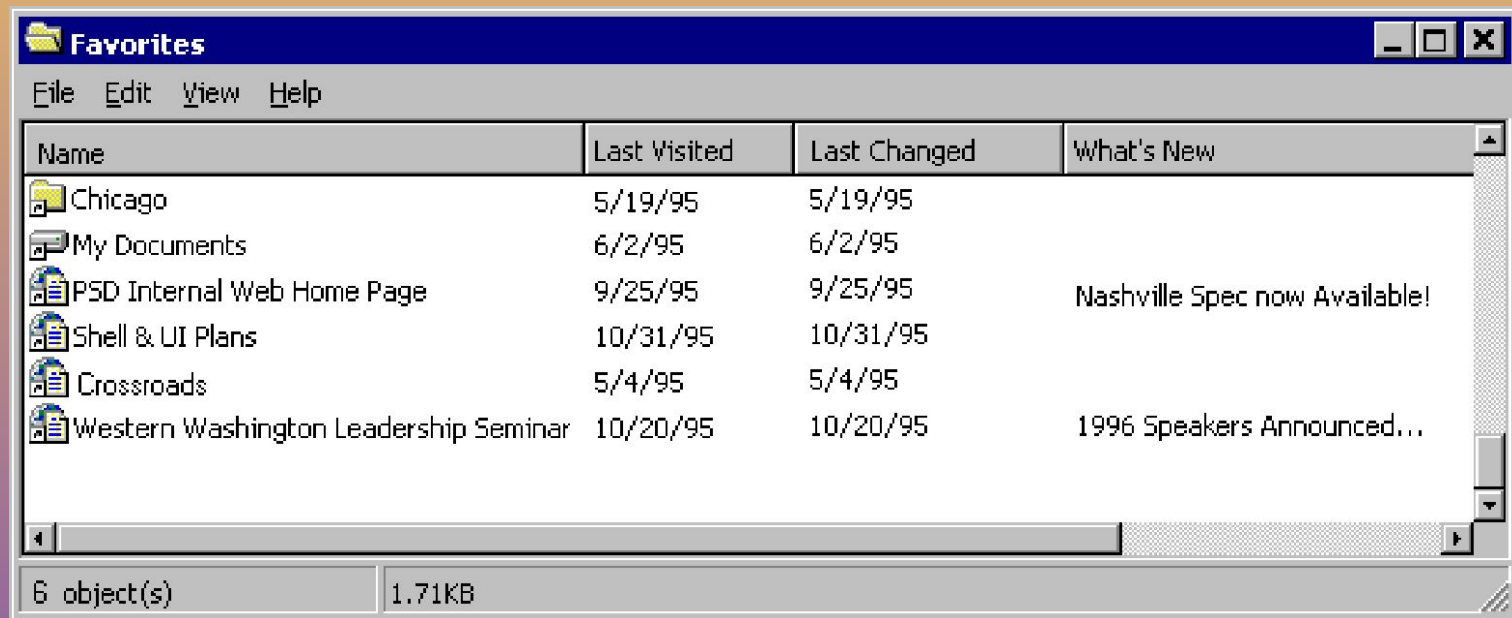
- Shows file type (e.g., Word document on the Internet)
- Can have custom HTML page icons
- Indicates URL “state” (e.g., cached, updated)

◆ Can store custom properties

Smart Favorites

- ◆ **Browser “Favorites” menu**
(tooltip and icons tell “What’s New”)
- ◆ **Prepopulated folders**
- ◆ **WebCheck engine - updates in the background**
- ◆ **Cache**
 - **Enables offline reading (Sticky Caching)**
 - **Quicker viewing**

Details View Of Favorites Folder



WebCheck

- ◆ **Notification of changes to your favorite Web sites**
 - **Check all by default**
 - **Background checking**
 - **Scheduled using System Agent**
- ◆ **Cache updating**
- ◆ **Bulletin, or What's New Text**

Offline Reading (Sticky Cache)

- ◆ Ability to mark selected favorite sites to be permanently cached on your local machine
- ◆ Integrated with WebCheck, for automatic updating

Site Map



Site Map - Goals

- ◆ **Provide a hierarchical view for navigation of Web sites - determined by the author, not based on HTML file storage**
- ◆ **Enhance ability of Web crawlers and Web searching tools to obtain semantic information about sites**

Site Map - Implementation

- ◆ Content owners must create a special sitemap file containing the details
- ◆ Use Object tag in HTML to specify sitemap

```
<object data =  
    "http://www.foobar.com/sitemap.smp"  
    type="text/smp" height=0 width=0>
```

Format Of SMP File

Each entry or item in the Map file would consist of the following syntax:

```
(NAME="Home Page" URL =  
"http://www.microsoft.com"  
ICON = Globe.bmp)
```


Content Advisor - Why We Are Providing Internet Ratings

- ◆ Enables parents to restrict kids' access to Internet sites of certain ratings
- ◆ Supports PICS Committee (Platform for Internet Content Selection, WC3) Standard
 - Leading effort to support a ratings system for Web content (e.g., like Motion Picture Association of America for movies. E.g., G, PG, R)
 - Defined meta-language for what rating systems should look like
 - Microsoft is **not** defining a rating system

Note: Ratings restrictions on a per-system basis to be provided with Internet Explorer 3.0

Content Advisor - UI Overview

- ◆ **New UI in control panel to set individual ratings for content access per user**
- ◆ **New family-friendly log on**
- ◆ **Partnership with RSACi to provide our default ratings criteria**

In your applications: If you provide content (e.g., CD-ROM game or multimedia title) you can rate your content as well.

The shell will check CDs

Ratings: Rating A Site

◆ Page rating in HTML stream

```
<HTML>  
<HEAD>  
(PICS-1.0 "http://www.gcf.org"  
labels on "1994.11.05T08:15-0500"  
until "1995.12.31T23:59-0000"  
for "http://www.gcf.org/index.html"  
by "International Parent/Teacher Association"  
ratings (language 0.5 nudity 0 violence 1))  
</HEAD>
```

Enhanced Themes

- ◆ **New content for themes** (background sounds, screen savers, icons, bitmaps, etc.)
 - **Plus** customized Pageview templates
- ◆ **Wired**
 - Updated content (daily, weekly, etc.)
 - Live content (e.g., stock ticker)

Programmability Features

Summary of ideas for Win32 applications

- ◆ **Active Controls** - new features for any application
- ◆ **Hypertext View** - add your own custom views via various implementations. Great for creating new file utilities (ACME SuperView)
- ◆ **Active Document** - integrate your document type into the shell as a Web page
- ◆ **Folder aggregation** - create your own customized details view (or other functionality)
- ◆ **OLE Automation** - drive the shell from an external application or internal HTML page

Active Controls

◆ Enhancements to existing controls

- Smooth scrolling
- Tree-down in treeview
- Virtual support in listview

◆ New controls

- Date picker
- Shell View Control
- Shell Item Control
- Miscellaneous Controls (TBD)

Note: Controls changes to be provided with Internet Explorer 3.0, Sweeper SDK

Adding Views To The Shell

◆ Add your own custom view to the View menu of the shell (example: ACME SuperView)

◆ Can be used either:

- In only a specific folder
- For all folders of a particular container-class (e.g. file system folders)

.reg file

desktop.ini file

```
[ExtShellFolderViews]
{5984FFE0-28D4-11CF-AE66-08002B2E1262}=pageview.htm
{8B618980-5727-11CF-ABA9-08002B2E1262}=customview.htm
```

```
REGEDIT4

[HKEY_CLASSES_ROOT\CLSID\
{8B618980-5727-11CF-ABA9-08002B2E1262}]
@="ViewName for the View menu"

[HKEY_CLASSES_ROOT\CLSID\
{8B618980-5727-11CF-ABA9-08002B2E1262}\TreatAs]
@="{5984FFE0-28D4-11CF-AE66-08002B2E1262}"

[HKEY_CLASSES_ROOT\CLSID\
{8B618980-5727-11CF-ABA9-08002B2E1262}\FilterView]
@="{25336920-03F9-11CF-8FD0-00AA00686F13}"
```

In-Place Navigation

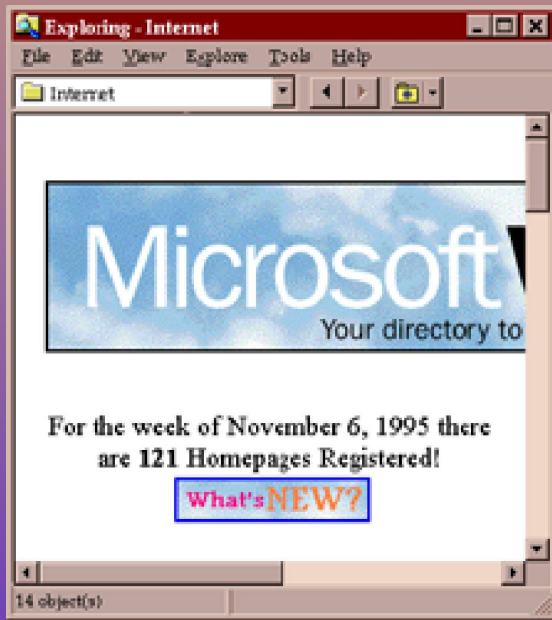
(Be an Active Document)

- ◆ The shell can act as the “host” for any document type that will act as a Web
 - HTML
 - VRML
 - Win32 applications: Microsoft[®] Office, Visio[®], Micrografx[®]

In your applications: You can make your content browsable as a “Web.” Support Active Document and hyperlinking

In-Place Navigation

- ◆ Browsing across multiple formats
- ◆ Browser UI (Go/Favorites menus, shell toolbar) remains in place



HTML



Word document



PowerPoint slides

In-Place Navigation

UI guidelines

- ◆ **Opening in-pane is NOT the default** - to open in-pane an author must specify that behavior for an authored hyperlink (or the user can override)
- ◆ **Prompt for saving changes** when the user leaves your document
- ◆ **Display minimal editing/adornment UI when your document appears** - optimize for reading

Folder Aggregation

- ◆ Use this to **add new columns to a folder view**
- ◆ Allows you to modify information provided by file system's IShellFolder
- ◆ you can use the shell's IShellFolder and all of its functionality, and append new functionality without having to rewrite all of IShellFolder

OLE Automation

- ◆ Write scripts to **drive the shell** or **respond to shell events**
- ◆ There are three main places you will be able to use this within the Shell
 - Within a Web page (local folder or Internet)
 - Automation of frame controls in the explorer (Back, Next, Go to Page/Folder)
 - High-level Shell integration (Start menu, Windows[®], etc.)

Attend Charlie Kindel's talk for more details!

Microsoft[®]

