

An aerial night photograph of Novosibirsk, Russia. The city is illuminated with warm lights, and a large, prominent building with a snow-covered dome is the central focus. The sky is a deep blue, and the city's lights create a vibrant contrast against the dark background. The dome building is surrounded by other urban structures, and the overall scene captures the bustling atmosphere of the city at night.

NOVOSIBIRSK

Работу выполнил
студент группы
ТД-173 Баяндуров
Артём

NOVOSIBIRSK

NOVOSIBIRSK IS ONE OF THE BIGGEST CITIES IN RUSSIA AND CONSIDERED TO BE THE THIRD LARGEST CITY AFTER MOSCOW AND ST. PETERSBURG AND THE BIGGEST ONE BEHIND THE URAL. IT'S SITUATED RIGHT IN THE MIDDLE OF RUSSIA. IT IS AN UNOFFICIAL CAPITAL OF SIBERIA. THE CITY LIES ON BOTH BANKS OF THE OB RIVER.

IN 1993 NOVOSIBIRSK CELEBRATED IT'S 100TH ANNIVERSARY AND IT'S GROWING RATE IS SO HIGH, THAT THE CITIZENS CAN CALL THE CITY RUSSIAN CHICAGO. IT OCCUPIES THE AREA OF 477.2 SQUARE KILOMETERS. POPULATION: ABOUT 1.5 MILLION PEOPLE



OFFICIAL SYMBOLS OF NOVOSIBIRSK

Coat of arms

Silver black lace on a shield symbolizes cross-Siberian railway line. Number of merlons shows that Novosibirsk is a regional centre. Sables, bow and arrows are taken from a historical emblem of Siberia



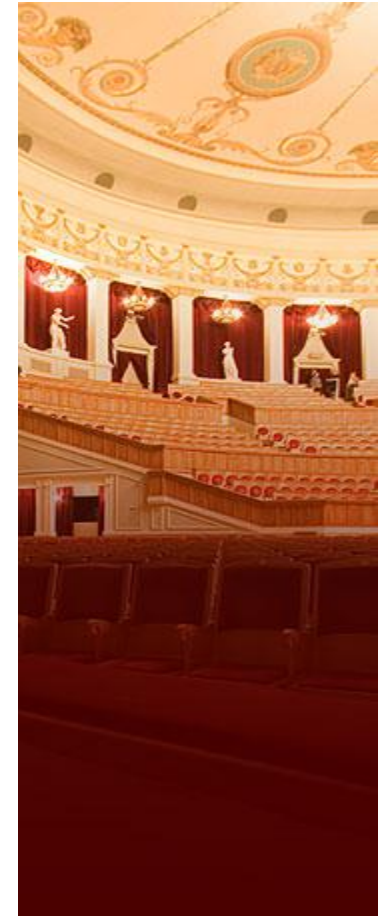
Flag

Novosibirsk has its own flag . Green field means health and natural resources of Siberia ; white colour means cleanness and Siberian snow. Blue lace symbolizes the river Ob



THEATRE

THE NOVOSIBIRSK STATE ACADEMIC OPERA AND BALLET THEATRE IS ONE OF THE BIGGEST THEATRES IN RUSSIA WITH THE WORLDWIDE POPULARITY. THE TOTAL AREA OF THE BUILDING IS 11837 SQUARE METRES, ITS VOLUME IS 294340 CUBIC METRES - MORE THAN THAT OF THE BOLSHOI THEATRE IN MOSCOW. THE MOST UNIQUE PART OF THE BUILDING IS ITS DOME 60 METRES IN DIAMETER AND 35 METRES HIGH. THE THEATRE IS OFTEN CALLED "SIBERIAN COLISEUM" AND THE BOLSHOI THEATRE OF SIBERIA FOR ITS SIZE AND BEAUTY.



THE YOUTH THEATRE GLOBES

THE YOUTH THEATRE GLOBES IS SITUATED IN THE CENTRE OF NOVOSIBIRSK, A SHORT WALK FROM THE CHAPEL. IT IS A HUGE BUILDING WITH TWO AUDITORIA, THE LARGE ONE IS FOR 540 SEATS AND THE SMALL IS FOR 100 SEATS.



THE NOVOSIBIRSK PUPPET THEATRE

YOU CAN VIEW MANY BEAUTIFUL HANDMADE PUPPETS AND MARIONETTES FROM THE PAST. HOUSED IN AN ESPECIALLY ATTRACTIVE HISTORICAL BUILDING, THE THEATRE DATES BACK TO THE LATE 1930S AND FEATURES REGULAR PERFORMANCES FOR ALL AGES.



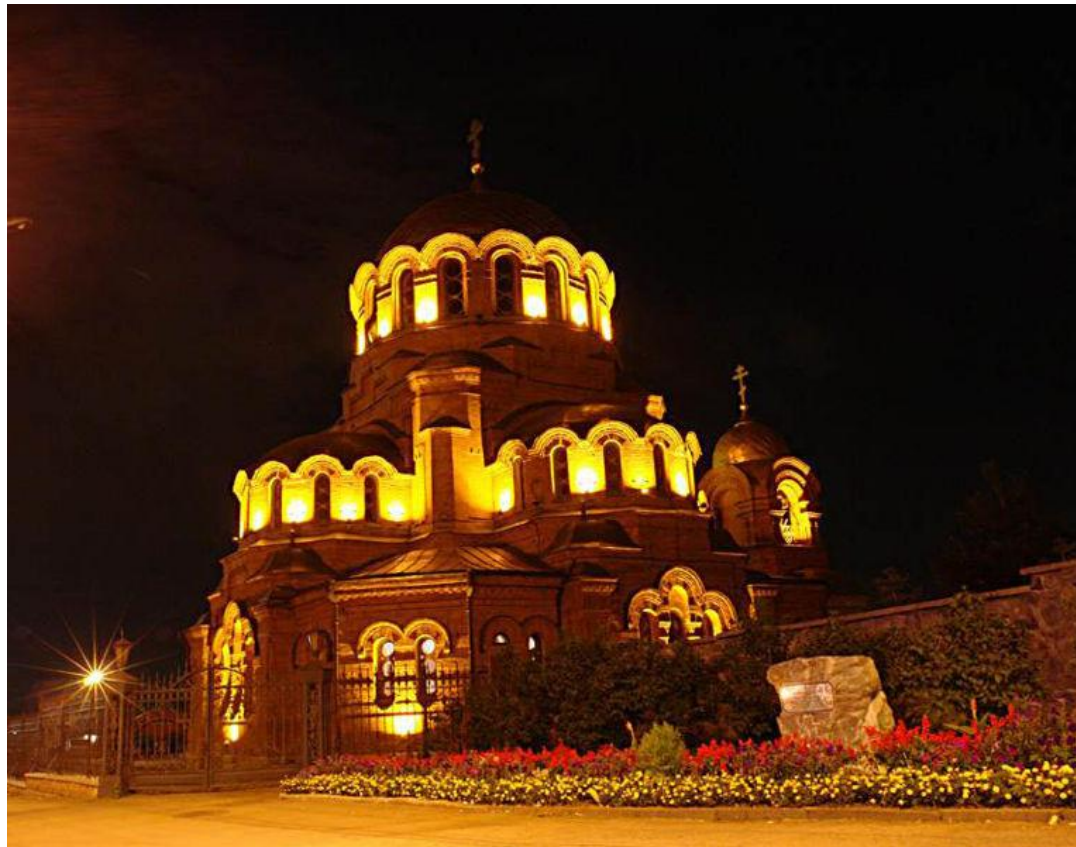
THE CHAPEL OF ST. NICOLAI

THE CHAPEL IN THE NAME OF NIKOLAI, THE MIRACLE MAN, WAS BUILT ON THE 300TH ANNIVERSARY OF ROMANOV'S HOUSE. IT SYMBOLIZES THE CENTER OF RUSSIA. THE CHAPEL WAS DESTROYED IN 1933, RECONSTRUCTED IN 1993 ON 100TH ANNIVERSARY OF THE NOVOSIBIRSK CITY.



THE TEMPLE OF ST. ALEXANDER NEVSKY

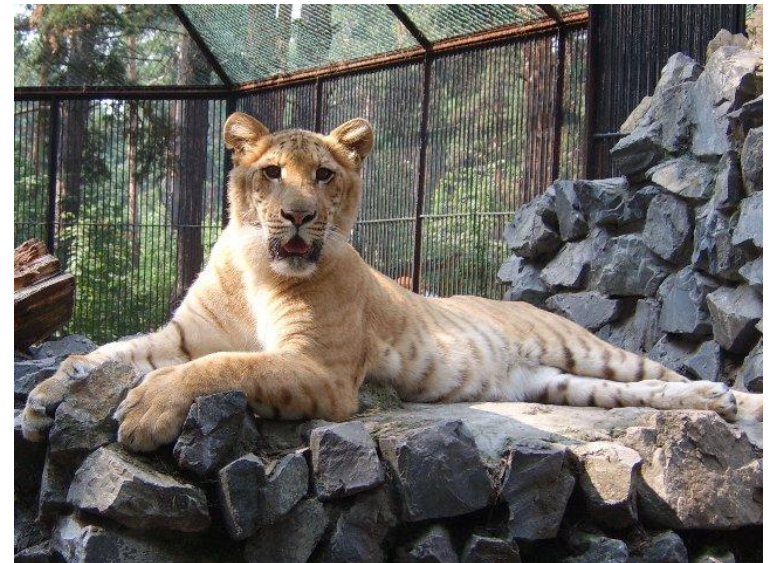
IS ONE OF THE FIRST STONE BUILDINGS OF THE CITY.



THE ZOO OF NOVOSIBIRSK

The Zoo of Novosibirsk is a world renowned zoo and a tourist attraction of the city. The zoo has over 4000 species of animals, and actively participates in 32 different societies for preserving endangered species. On average, around 7000,000 people visit the zoo each year.

The symbol of the zoo is a snow leopard. It is a unique animal. Nowadays you only can find it in Altai.



THE VAUXHALL OF NOVOSIBIRSK

"NOVOSIBIRSK-GLAVNY" CENTRAL RAILWAY STATION BUILT IN 1939 IS A WONDERFUL EXAMPLE OF THE SO-CALLED "IMPERIAL" ARCHITECTURE. THE SIZE OF THE BUILDING IS 180 THOUSAND CUBIC METERS. IT HAS THE SHAPE OF A RAILWAY ENGINE. TODAY IT IS STILL THE LARGEST IN SIBERIA, AND ONE OF THE LARGEST IN RUSSIA.



BLUETOOTH

A RESIDENTIAL HOUSE, THE SECOND HIGHEST BUILDING IN NOVOSIBIRSK CITY (SOME 70 METERS HIGH), WAS COMPLETED IN 2003. TWO EVEN HIGHER BUILDINGS ARE UNDER CONSTRUCTION. FOLK NICKNAMES INCLUDE "BLUETOOTH", "BATMAN", "PLUG", "HORNED". FUNNILY, THE BUILDING IS SITUATED IN KOMMUNISTICHESKAYA (COMMUNIST) STREET.



THE WORLD'S LONGEST METRO BRIDGE IS SITUATED IN NOVOSIBIRSK





**THANK YOU
FOR ATTENTION**