

WILLIAM SHAKESPEARE

1564 - 1616



Memorial Theatre in
Stratford-on-Avon.

**William Shakespeare. The greatest
English poet and dramatist.**

QUOTATIONS.

-“False face must hide what the false heart doth know.” (“Hamlet”).

**“Men of few words are the best men”
 (“King Henry V”)**

**“Better a witty fool than a foolish wit”
 (“Twelfth Night”)**

**“What’s done can’t be
 undone” (“Macbeth”)**

FRANCIS BACON

Francis Bacon was an English philosopher and scientist. Bacon called himself "the secret poet". He owned the mysterious manuscript where he wrote the names of several plays of Shakespeare, the name of the playwright and the quotations from his works.



COUNTESS MARY PEMBROK

Mary composed under a man's pseudonym. The theory is spoken that some compositions are devoted to the sons of the countess.



SIR HENRY NEVILL

**Sir Henry
Neville is a
diplomat and
Shakespeare's
distant relative**





This is the most famous house in England and the most famous house in the world.

Shakespeare was born here.

The appearance of the house is the same as it looked at that time.

STRATFORD ROYAL SHAKESPEARE THEATRE (1932)



GLOBAL TEATRE

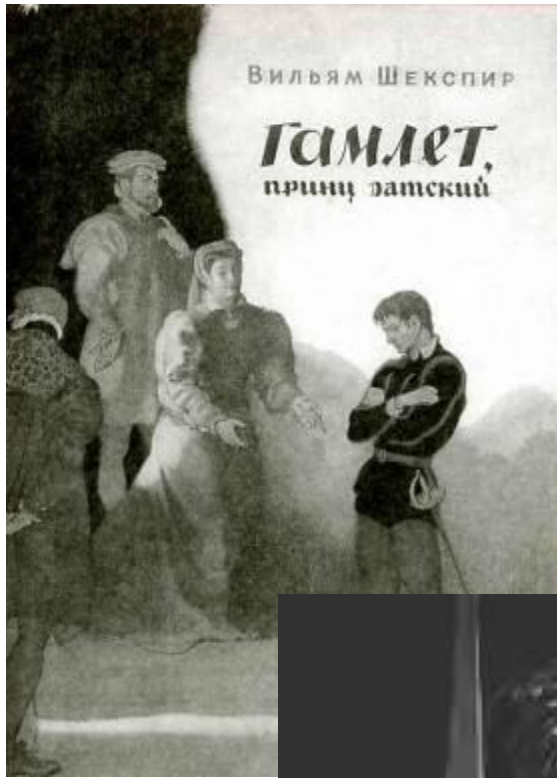


MONUMENTS



GOD BLESS FOR HIS SAKS FORGIVE
TO DRIC THE DWIT ENCLOSED NAME
BLEST BE V MAN S SINGLS JEE STONE
AND CYST BE BE T TONES MY DONES

THE SON OF THE SON
WILLIAM
SCOTT BURN

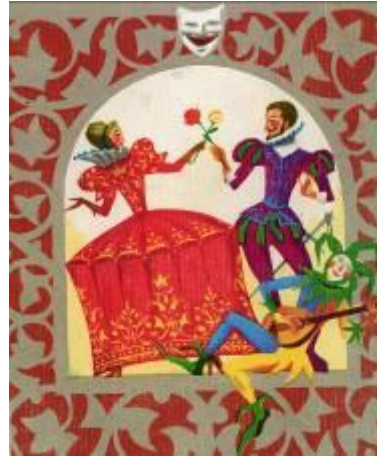


“Hamlet” is a great philosophical tragedy. It is the story of a man who loved good and hated evil who loved truth and hated lies.

The character of Hamlet is one of the most difficult in world literature.

.

“ROMEO AND JULIET”- AN OPTIMISTIC TRAGEDY. STAGED IN ALL KINDS OF THEATRES.



This wonderful love story is about two lovers Romeo and Juliet. Unfortunately, they died, but they didn't stop loving each other. They stayed young forever!

ROMEO AND JULIET

VERONA



