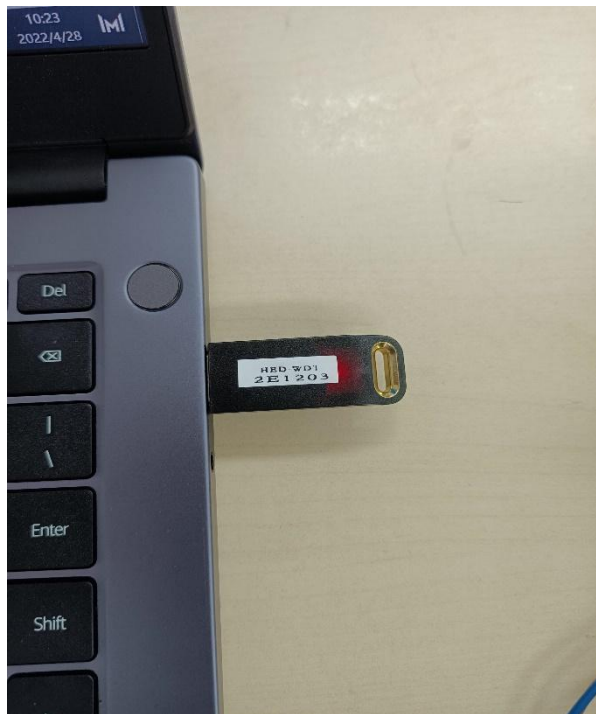


# wifi902英文版 安装及使用教程

## wifi902 Diagnostic Software Installation and Tutorial

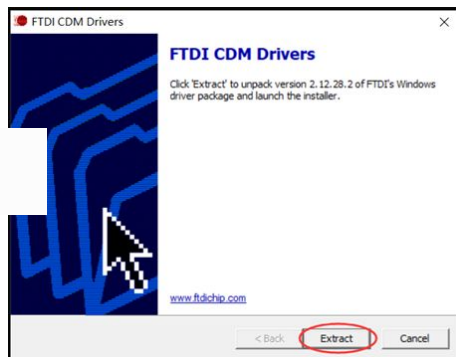
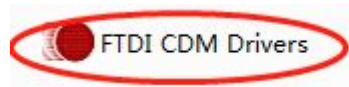
## 插上加密狗并连上诊断仪

Plug in softdog and connect the diagnostic equipment



# 双击FTDI CDM Drivers安装902驱动

## double click FTDI CDM Drivers

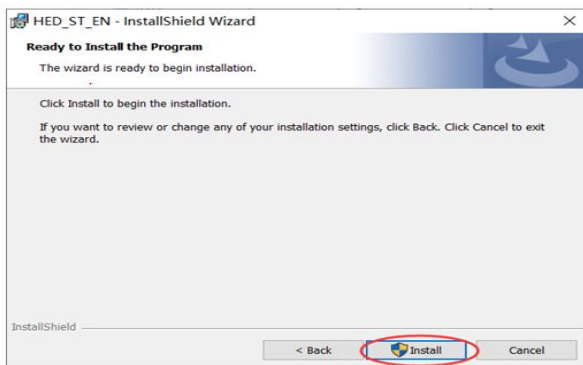
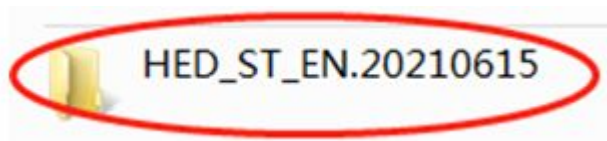


# 等待一会并完成

## Click done after waiting

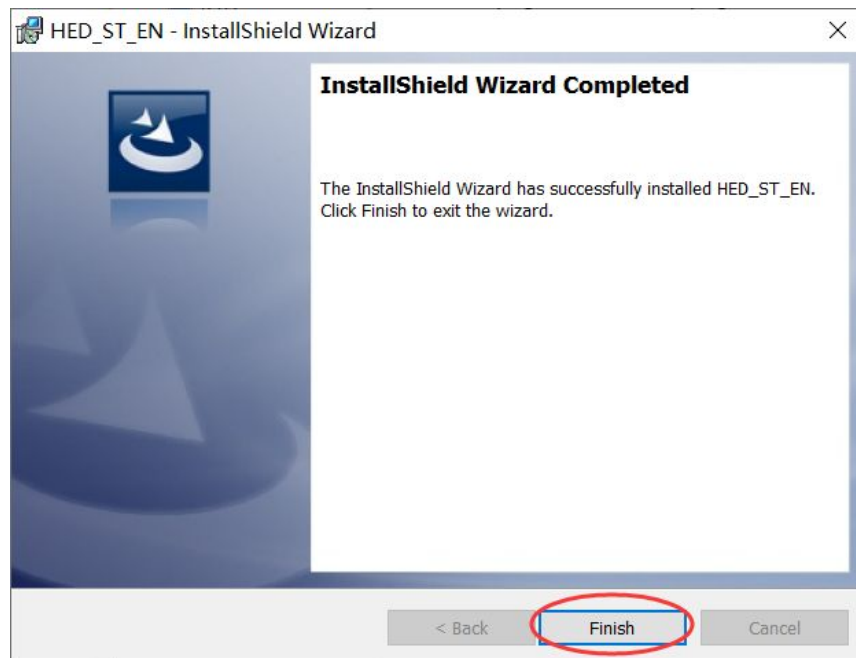


双击HED\_ST\_EN.20210615, setup, 安装软件  
double click HED\_ST\_EN.2021061, setup



该程序安装完成

This progress accomplished



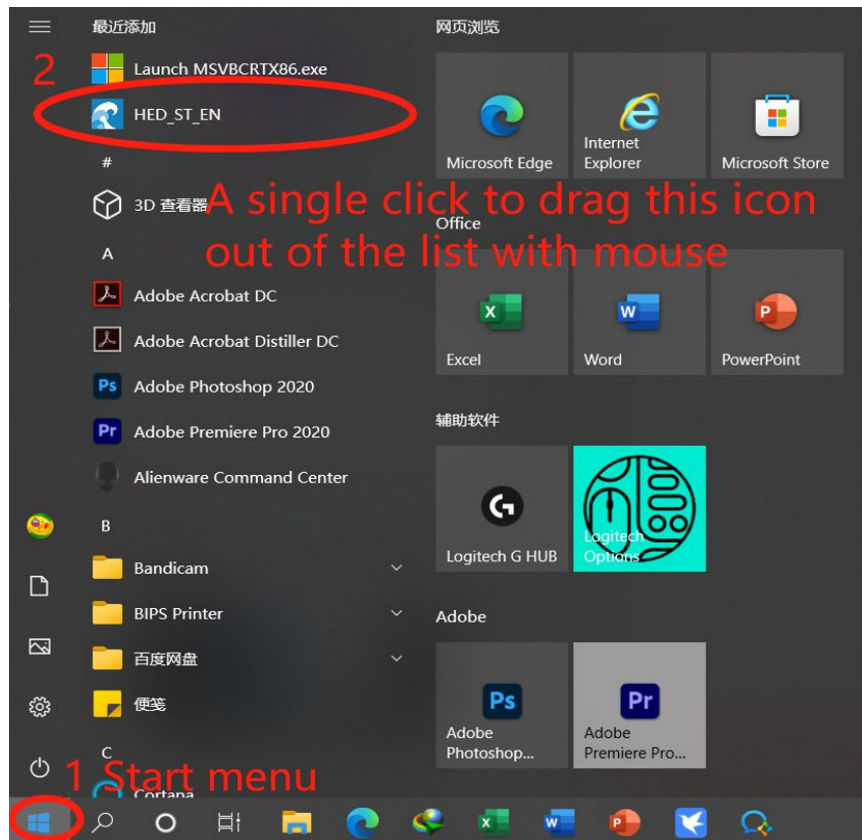
桌面上出现该图标，并双击

Now, an icon present to your desk and double click it



如果桌面没有出现该图标，则进入开始菜单进行寻找

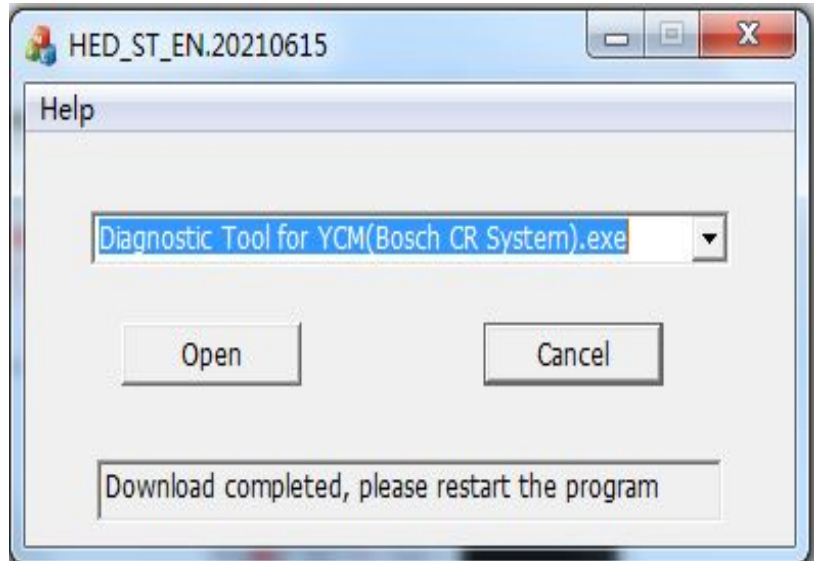
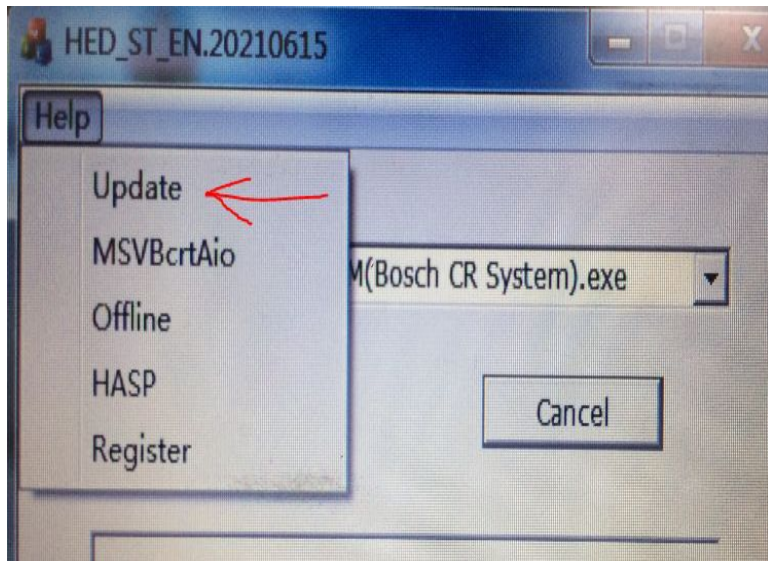
Enter start menu if the icon don't show on your desk





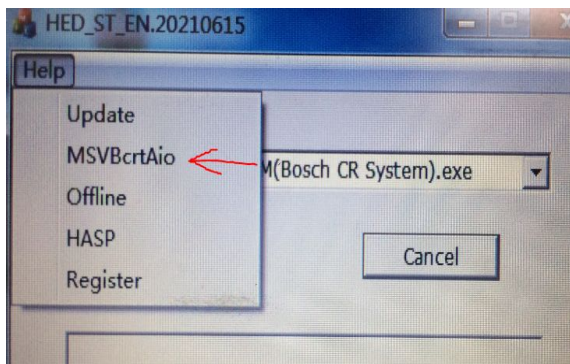
点击update, 等候5分钟, 完成。

Choose update, waiting 5 minute, completed



# 点击MSVBcrtAio, 运行库合集2019.07

## Click MSVBcrtAio



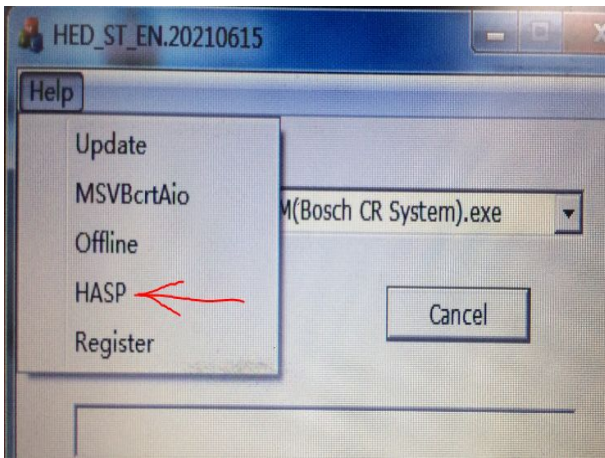
选择不重启电脑（因为还有工具需要安装）

Choose “Not to restart” and click finish (We have no install instrument yet)

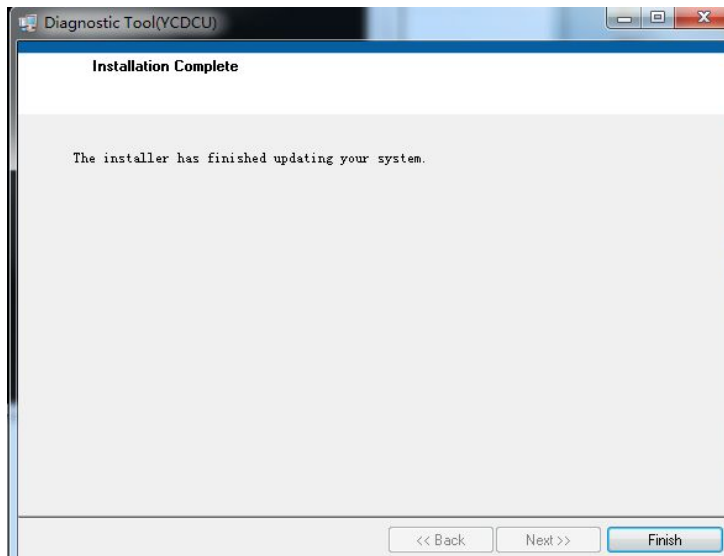
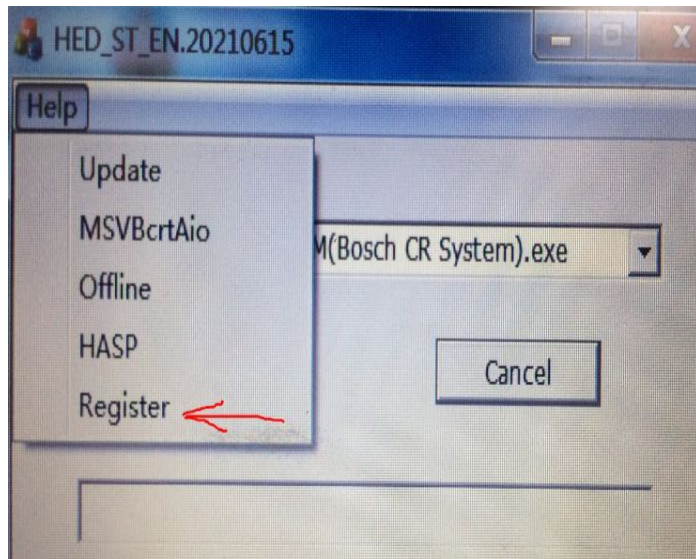


# 点击HASP, 阿拉丁驱动

## Click HASP



# 点击Register, YDCU Click Register



## 插上加密狗并连上诊断仪

Plug in softdog and connect the diagnostic equipment

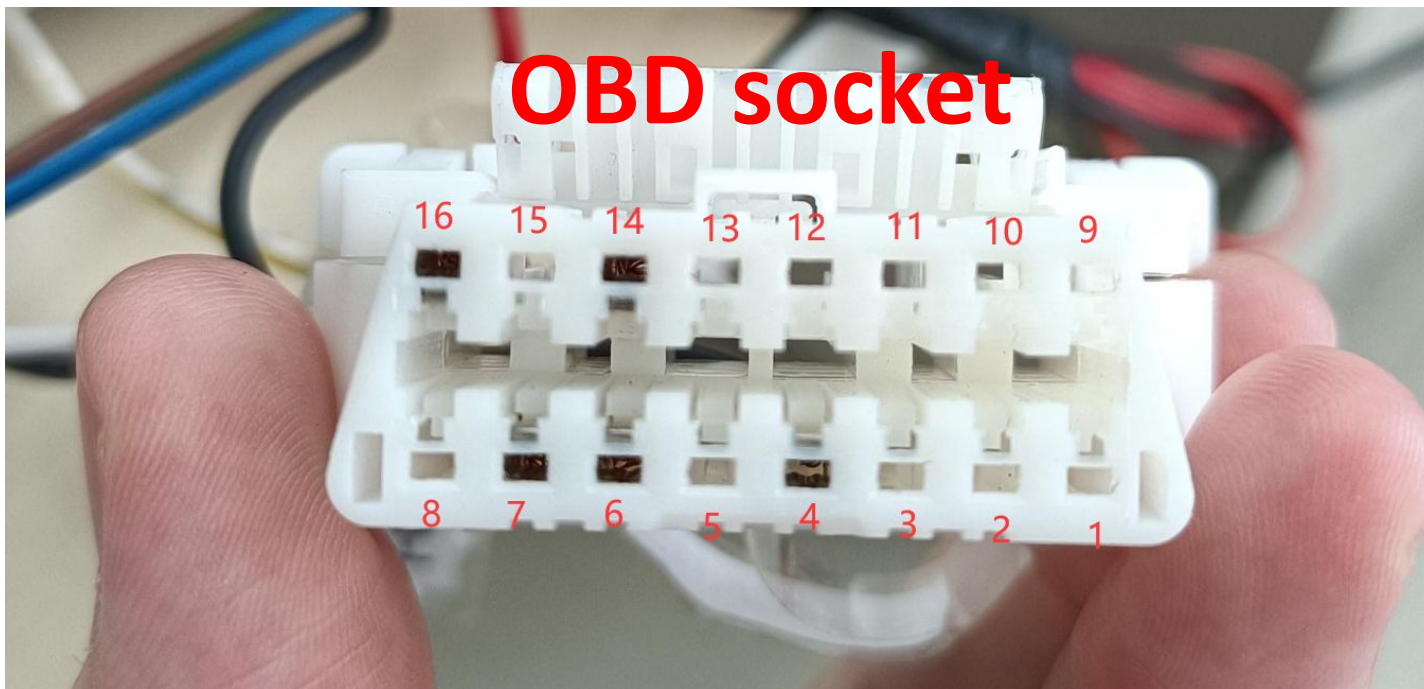


找到对应的OBD接口 Find the right connection group in OBD socket

① K-Line: 7      GND: 4      VCC: 16 (For Bosch CR System)

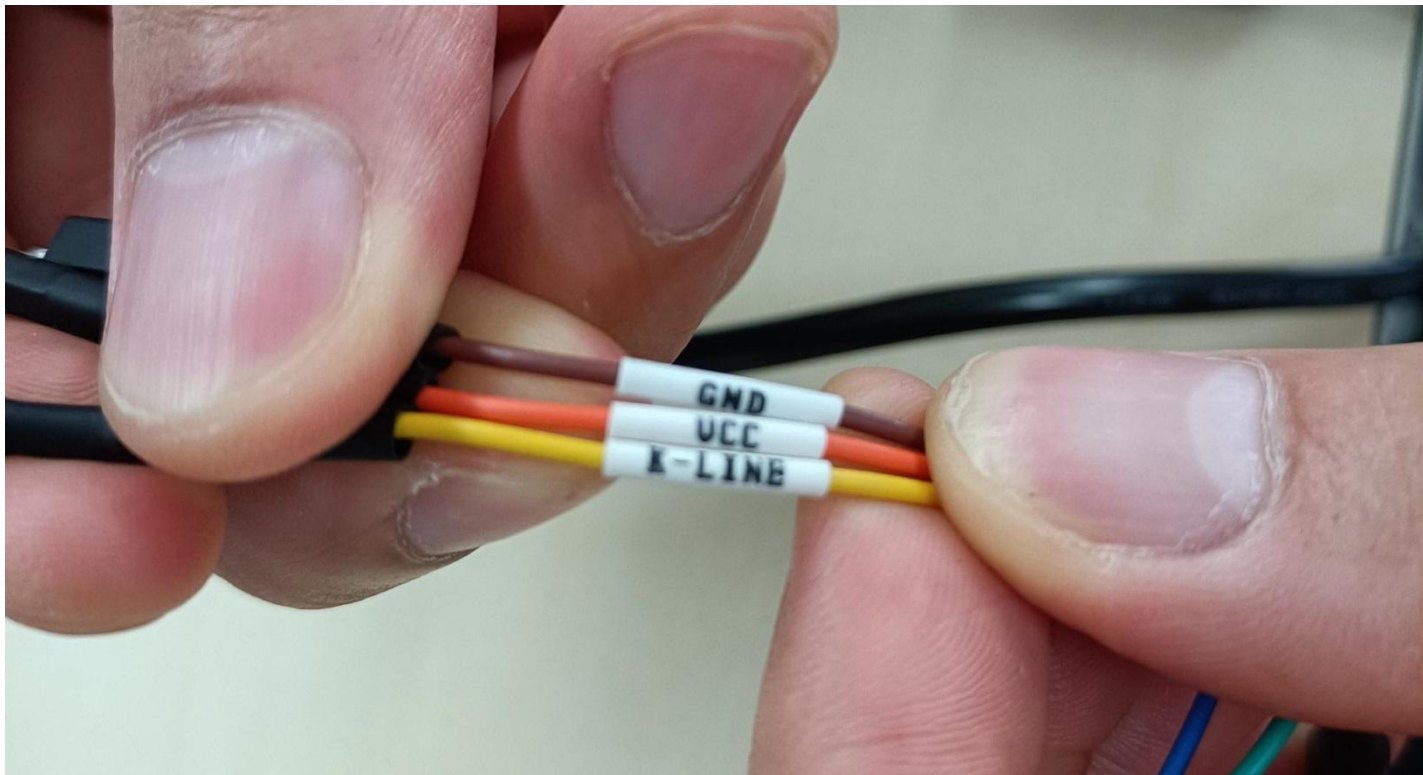
② CAN-H0: 6      CAN-L0: 14 (For YCDCU)

③ CAN-H1: 3      CAN-L1: 11



**先尝试进入博世共轨系统，并找到对应线组**

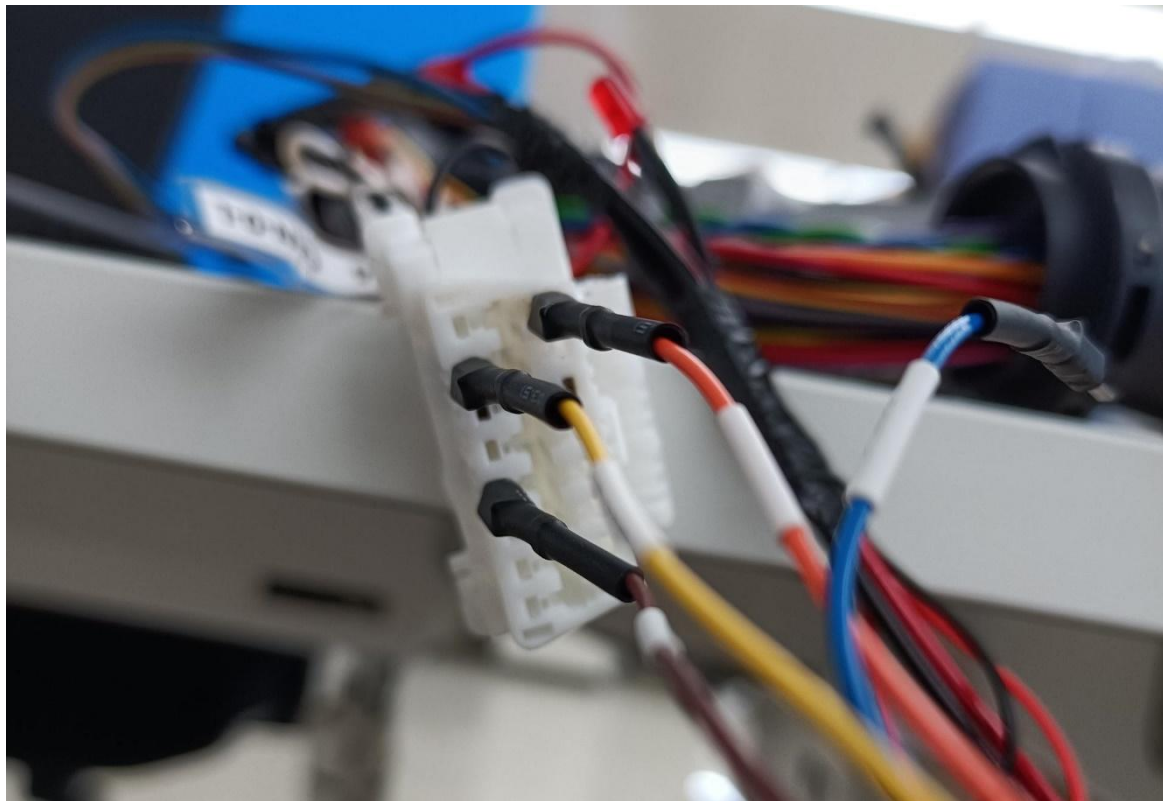
Try to enter Bosch CR System and find the right wire group





找到接线组①的位置并插在OBD口里

Find the connection group ① and plug the wires in OBD socket



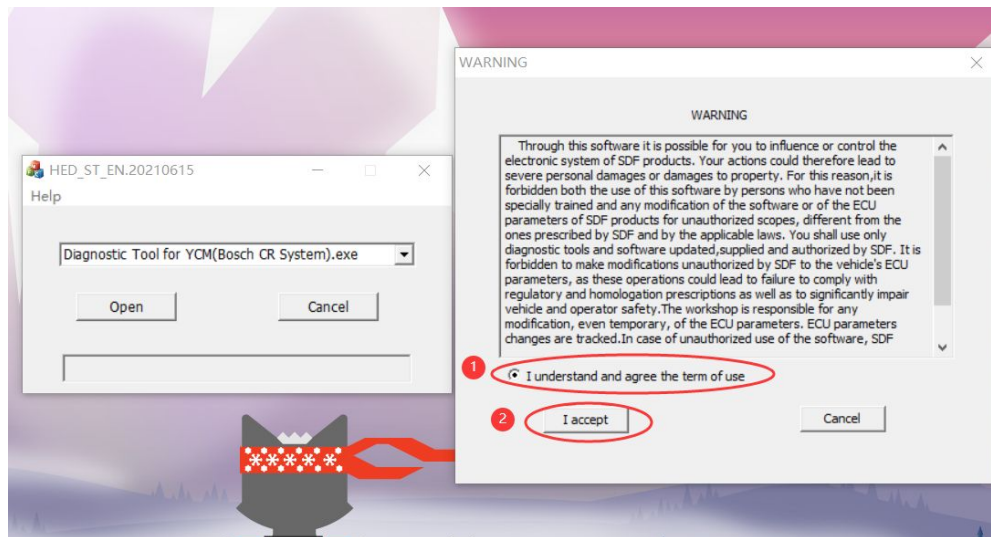
# 打开海能诊断软件

Open the software



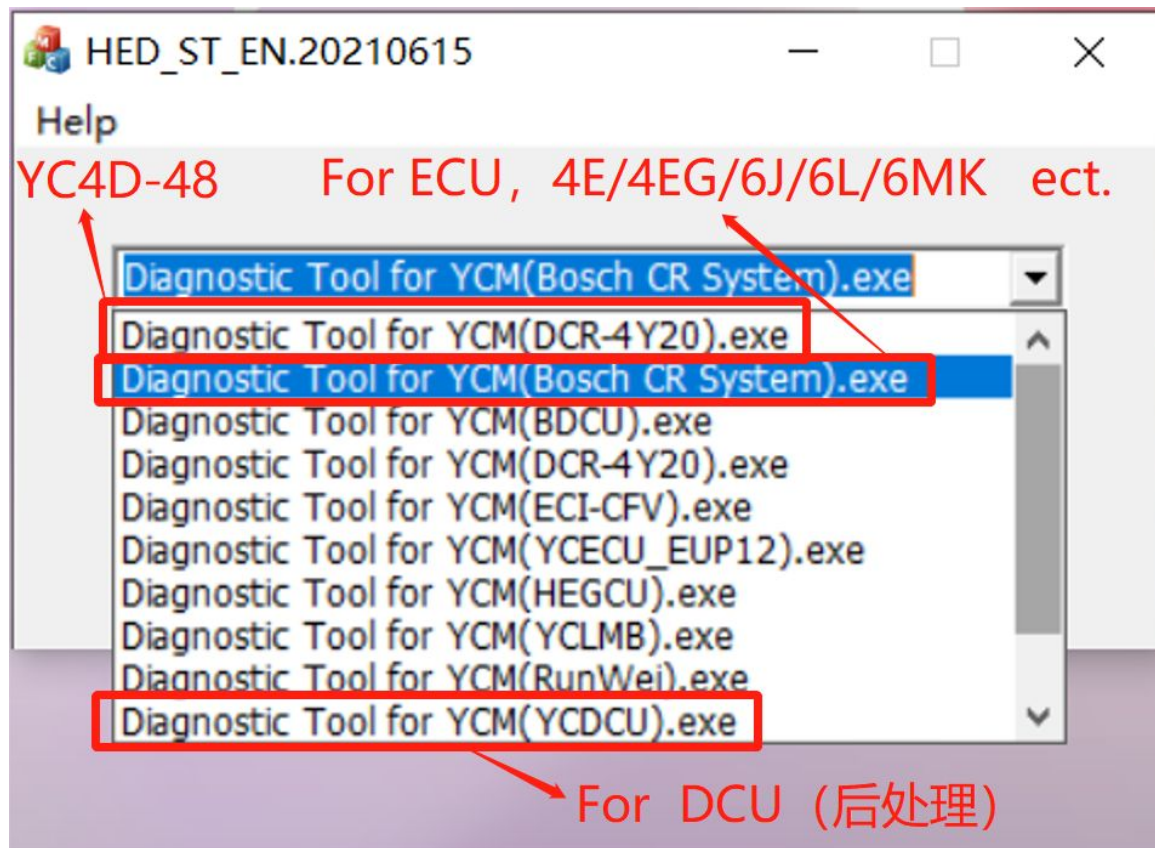
## 接好控制器和诊断仪的线后进入博世共轨系统

Enter the Bosch CR System after the connection between ECU/RCU/DCU and diagnostic equipment



## 其它系统介绍

### Introduction of other system



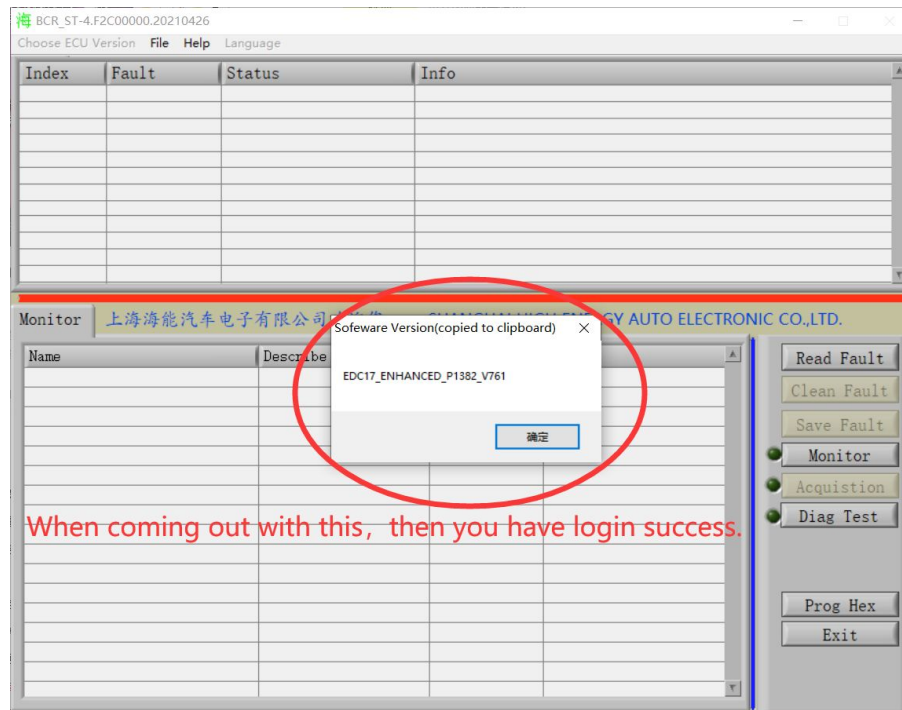
## 诊断仪会显示两个绿灯

The diagnostic equipment will show two green lights when connection completed



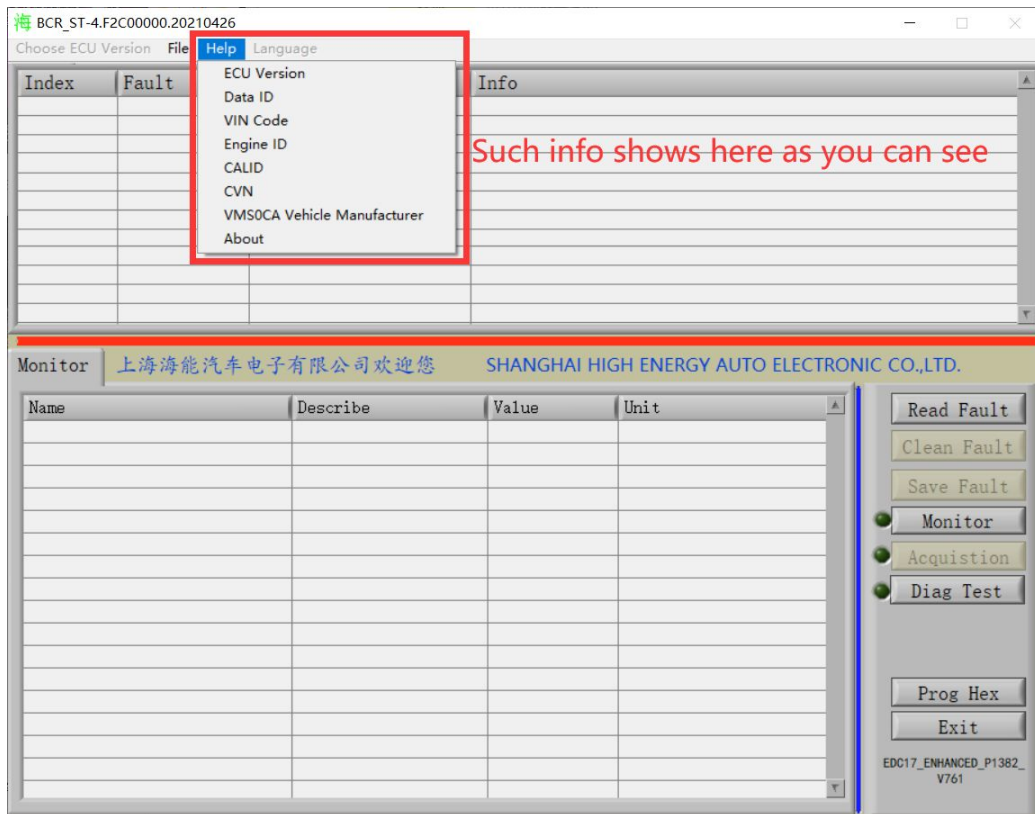
## 成功进入时会显示软件版本号

It shows the software version when you are login successful



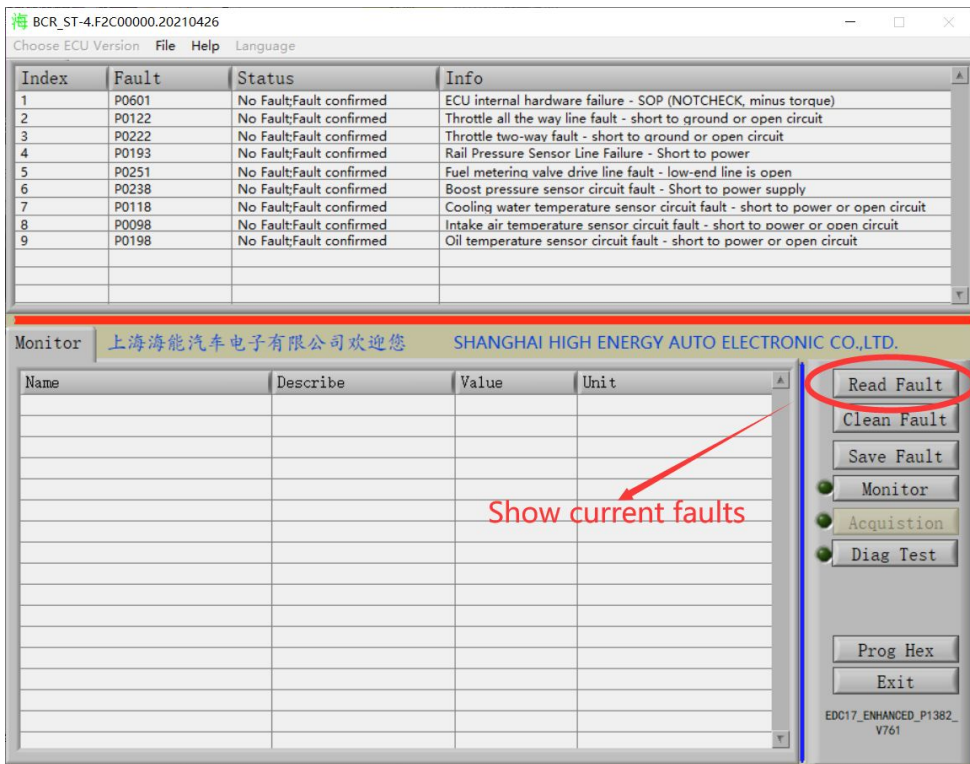
在“帮助”里可以找到各种信息

You can find all kinds of info in “Help”



# 读取故障功能

## Read Fault Function



The screenshot displays a diagnostic software window titled "BCR\_ST-4.F2C00000.20210426". The main area is divided into two sections. The top section is a table listing faults, and the bottom section is a control panel.

Index	Fault	Status	Info
1	P0601	No Fault;Fault confirmed	ECU internal hardware failure - SOP (NOTCHECK, minus torque)
2	P0122	No Fault;Fault confirmed	Throttle all the way line fault - short to ground or open circuit
3	P0222	No Fault;Fault confirmed	Throttle two-way fault - short to ground or open circuit
4	P0193	No Fault;Fault confirmed	Rail Pressure Sensor Line Failure - Short to power
5	P0251	No Fault;Fault confirmed	Fuel metering valve drive line fault - low-end line is open
6	P0238	No Fault;Fault confirmed	Boost pressure sensor circuit fault - Short to power supply
7	P0118	No Fault;Fault confirmed	Cooling water temperature sensor circuit fault - short to power or open circuit
8	P0098	No Fault;Fault confirmed	Intake air temperature sensor circuit fault - short to power or open circuit
9	P0198	No Fault;Fault confirmed	Oil temperature sensor circuit fault - short to power or open circuit

Below the table is a "Monitor" section with a welcome message: "上海海能汽车电子有限公司欢迎您 SHANGHAI HIGH ENERGY AUTO ELECTRONIC CO.,LTD." and a table with columns: "Name", "Describe", "Value", and "Unit".

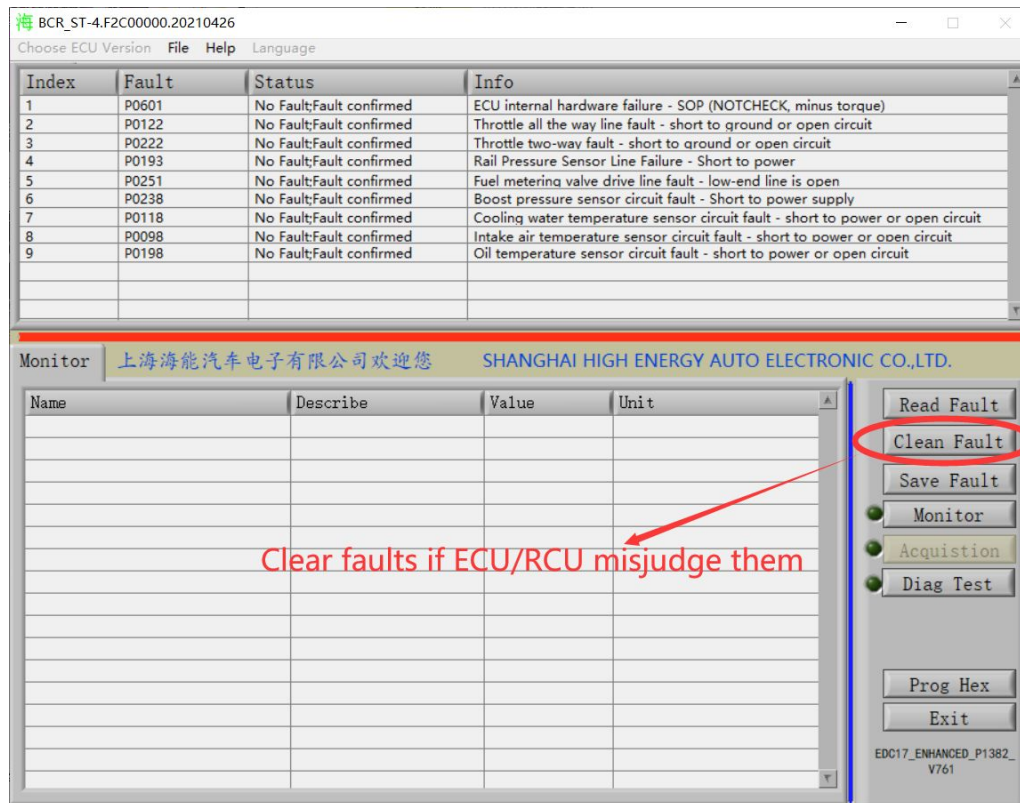
To the right of the "Name" table is a vertical stack of buttons: "Read Fault", "Clean Fault", "Save Fault", "Monitor", "Acquisition", "Diag Test", "Prog Hex", and "Exit". The "Read Fault" button is circled in red, and a red arrow points from the text "Show current faults" to it.

At the bottom right, the version information "EDC17\_ENHANCED\_P1382\_V761" is displayed.



# 清除故障功能

## Clean Fault Function



BCR\_ST-4.F2C00000.20210426

Choose ECU Version File Help Language

Index	Fault	Status	Info
1	P0601	No Fault;Fault confirmed	ECU internal hardware failure - SOP (NOTCHECK, minus torque)
2	P0122	No Fault;Fault confirmed	Throttle all the way line fault - short to ground or open circuit
3	P0222	No Fault;Fault confirmed	Throttle two-way fault - short to ground or open circuit
4	P0193	No Fault;Fault confirmed	Rail Pressure Sensor Line Failure - Short to power
5	P0251	No Fault;Fault confirmed	Fuel metering valve drive line fault - low-end line is open
6	P0238	No Fault;Fault confirmed	Boost pressure sensor circuit fault - Short to power supply
7	P0118	No Fault;Fault confirmed	Cooling water temperature sensor circuit fault - short to power or open circuit
8	P0098	No Fault;Fault confirmed	Intake air temperature sensor circuit fault - short to power or open circuit
9	P0198	No Fault;Fault confirmed	Oil temperature sensor circuit fault - short to power or open circuit

Monitor 上海海能汽车电子有限公司欢迎您 SHANGHAI HIGH ENERGY AUTO ELECTRONIC CO.,LTD.

Name	Describe	Value	Unit

Read Fault

**Clean Fault**

Save Fault

Monitor

Acquisition

Diag Test

Prog Hex

Exit

EDC17\_ENHANCED\_P1382\_V761

Clear faults if ECU/RCU misjudge them

# 监测数据和断缸测试功能

## Monitor and Diag Test Function

BCR\_ST-4.F2C00000.20210426

Choose ECU Version File Help Language

Index	Fault	Status	Info
1	P0601	No Fault;Fault confirmed	ECU internal hardware failure - SOP (NOTCHECK, minus torque)
2	P0122	No Fault;Fault confirmed	Throttle all the way line fault - short to ground or open circuit
3	P0222	No Fault;Fault confirmed	Throttle two-way fault - short to ground or open circuit
4	P0193	No Fault;Fault confirmed	Rail Pressure Sensor Line Failure - Short to power
5	P0251	No Fault;Fault confirmed	Fuel metering valve drive line fault - low-end line is open
6	P0238	No Fault;Fault confirmed	Boost pressure sensor circuit fault - Short to power supply
7	P0118	No Fault;Fault confirmed	Cooling water temperature sensor circuit fault - short to power or open circuit
8	P0098	No Fault;Fault confirmed	Intake air temperature sensor circuit fault - short to power or open circuit
9	P0198	No Fault;Fault confirmed	Oil temperature sensor circuit fault - short to power or open circuit

---

Monitor 上海海能汽车电子有限公司欢迎您 SHANGHAI HIGH ENERGY AUTO ELECTRONIC CO.,LTD.

Name	Describe	Value	Unit

Read Fault

Clean Fault

Save Fault

**Monitor**

Acquisition

**Diag Test**

Prog Hex

Exit

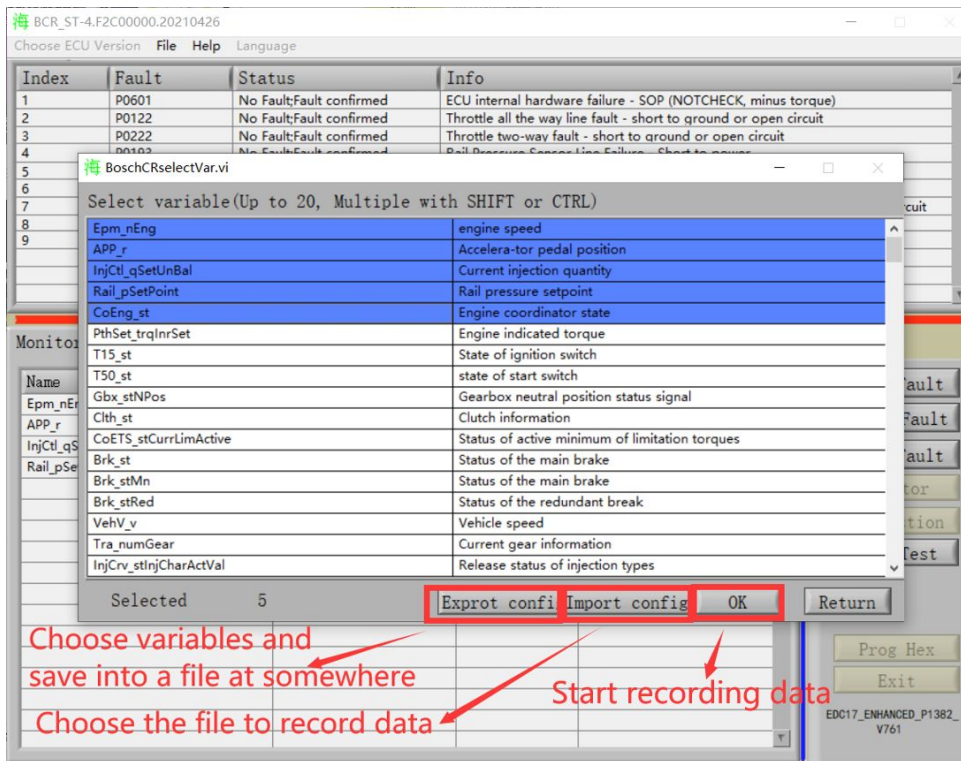
EDC17\_ENHANCED\_P1382\_V761

Data monitor ←

Cylinder disable test ←

# 数据监测里的功能（按钮依次为制作模板、载入模板、开始记录、返回）

As shown in the figure (Monitor function)



The screenshot shows a diagnostic software window titled "BCR\_ST-4.F2C00000.20210426". In the background, there is a table of faults:

Index	Fault	Status	Info
1	P0601	No Fault:Fault confirmed	ECU internal hardware failure - SOP (NOTCHECK, minus torque)
2	P0122	No Fault:Fault confirmed	Throttle all the way line fault - short to ground or open circuit
3	P0222	No Fault:Fault confirmed	Throttle two-way fault - short to ground or open circuit
4	P0102	No Fault:Fault confirmed	Rail Pressure Sense Line Failure - Short to ground

In the foreground, a dialog box titled "BoschCRselectVar.vi" is open, showing a list of variables to be selected. The "Selected" count is 5. At the bottom of the dialog, there are buttons for "Exprot confi", "Import config", "OK", and "Return".

Red arrows and text annotations explain the button functions:

- "Import config": Choose variables and save into a file at somewhere
- "OK": Choose the file to record data
- "Return": Start recording data

# 停止检测和保存检测数据功能

As shown in the figure (Monitor function)

海 BCR\_ST-4.F2C00000.20210426

Choose ECU Version File Help Language

Index	Fault	Status	Info
1	P0601	No Fault;Fault confirmed	ECU internal hardware failure - SOP (NOTCHECK, minus torque)
2	P0122	No Fault;Fault confirmed	Throttle all the way line fault - short to ground or open circuit
3	P0222	No Fault;Fault confirmed	Throttle two-way fault - short to ground or open circuit
4	P0193	No Fault;Fault confirmed	Rail Pressure Sensor Line Failure - Short to power
5	P0251	No Fault;Fault confirmed	Fuel metering valve drive line fault - low-end line is open
6	P0238	No Fault;Fault confirmed	Boost pressure sensor circuit fault - Short to power supply
7	P0118	No Fault;Fault confirmed	Cooling water temperature sensor circuit fault - short to power or open circuit
8	P0098	No Fault;Fault confirmed	Intake air temperature sensor circuit fault - short to power or open circuit
9	P0198	No Fault;Fault confirmed	Oil temperature sensor circuit fault - short to power or open circuit

---

Monitor 上海海能汽车电子有限公司欢迎您 SHANGHAI HIGH ENERGY AUTO ELECTRONIC CO.,LTD.

Name	Describe	Value	Unit
Epm_nEng	engine speed	0	rpm
APP_r	Accelera-tor pedal position	0.0000	%
InjCtl_qSetUnBal	Current injection quantity	0.0000	mg/cyc
Rail_pSetPoint	Rail pressure setpoint	500	bar

Read Fault

Clean Fault

Save Fault

Stop Mon

Acquisition

Diag Test

Prog Hex

Exit

EDC17\_ENHANCED\_P1382\_V761

Stop monitor and quit

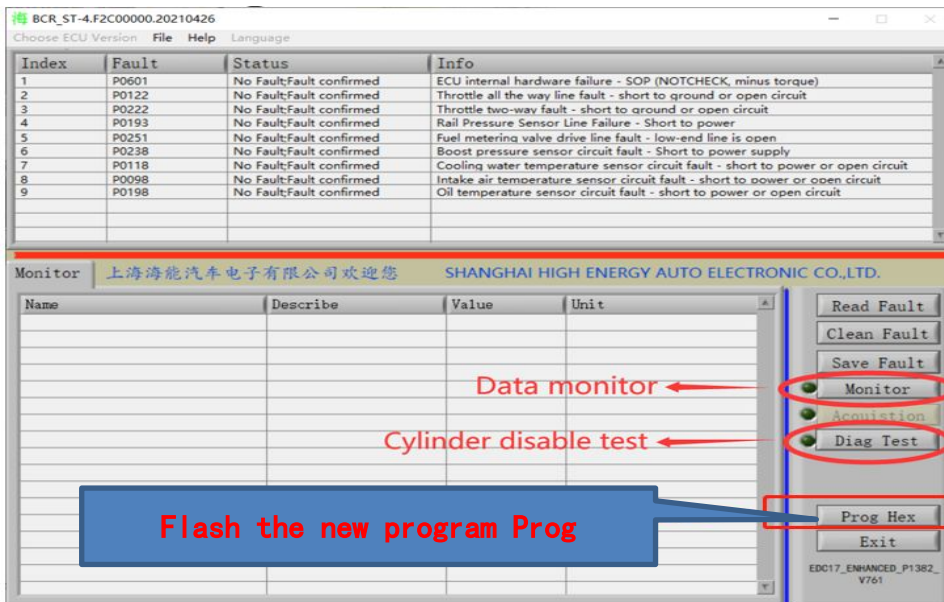
Save data at somewhere without clicking the "Stop Monitor"

## 刷写新程序Prog Hex:

- 1、点击Prog Hex按钮，上传新程序
- 2、等待新程序刷写完成，然后关闭钥匙3分钟
- 3、重新打开钥匙开关，然后重新打开诊断软件。
- 4、启动发动机，检查故障灯是否亮，是否可以达到最高转速

## Flash the new program Prog:

1. Click the Prog Hex button to upload a new program
2. Wait for the new program to be flashed, and then turn off the key for 3 minutes
3. Turn the key switch back on, and then re-open the diagnostic software.
4. Start the engine, check whether the fault light is on, and whether it can reach the maximum speed





谢谢 THANKS