

INTRODUCTION TO QC

softserve

AGENDA

- What is a project?
- Typical project team structure.
- Who is Project Manager?
- Who is Developer?
- Who is Tester?
- Who is Customer?
- Who is User?
- General Test Scheme.
- What is a quality product?

WHAT IS THIS?

INFORMATION TECHNOLOGY



SOFTWARE



PROJECT



softserve

WHAT IS A PROJECT?

Project is a series of tasks that need to be completed to reach a specific outcome. A project can also be defined as a set of inputs and outputs required to achieve a particular goal. Projects can range from simple to complex and can be managed by one person or a hundred.

What is a Project ?



People



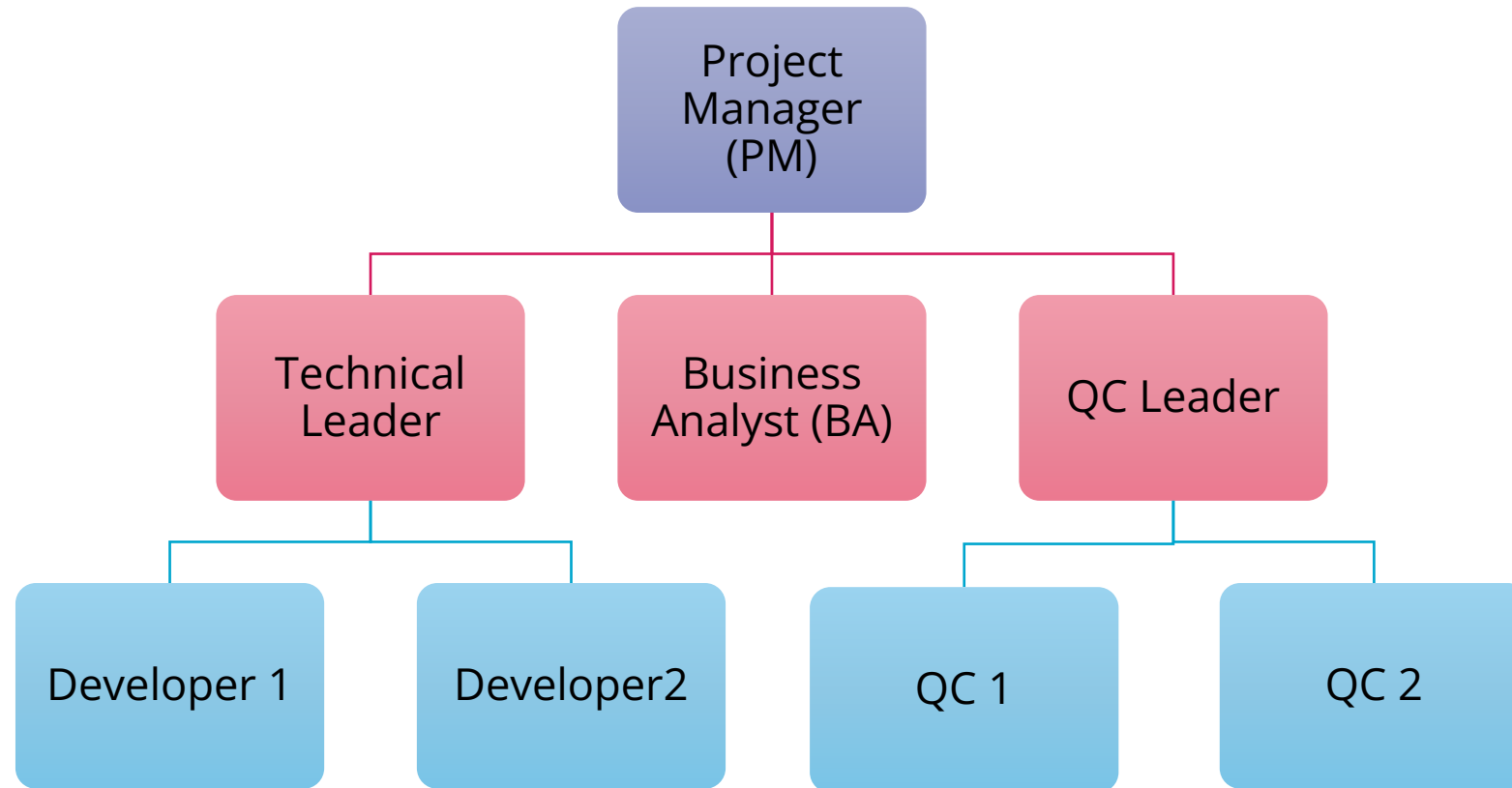
Process



Tool

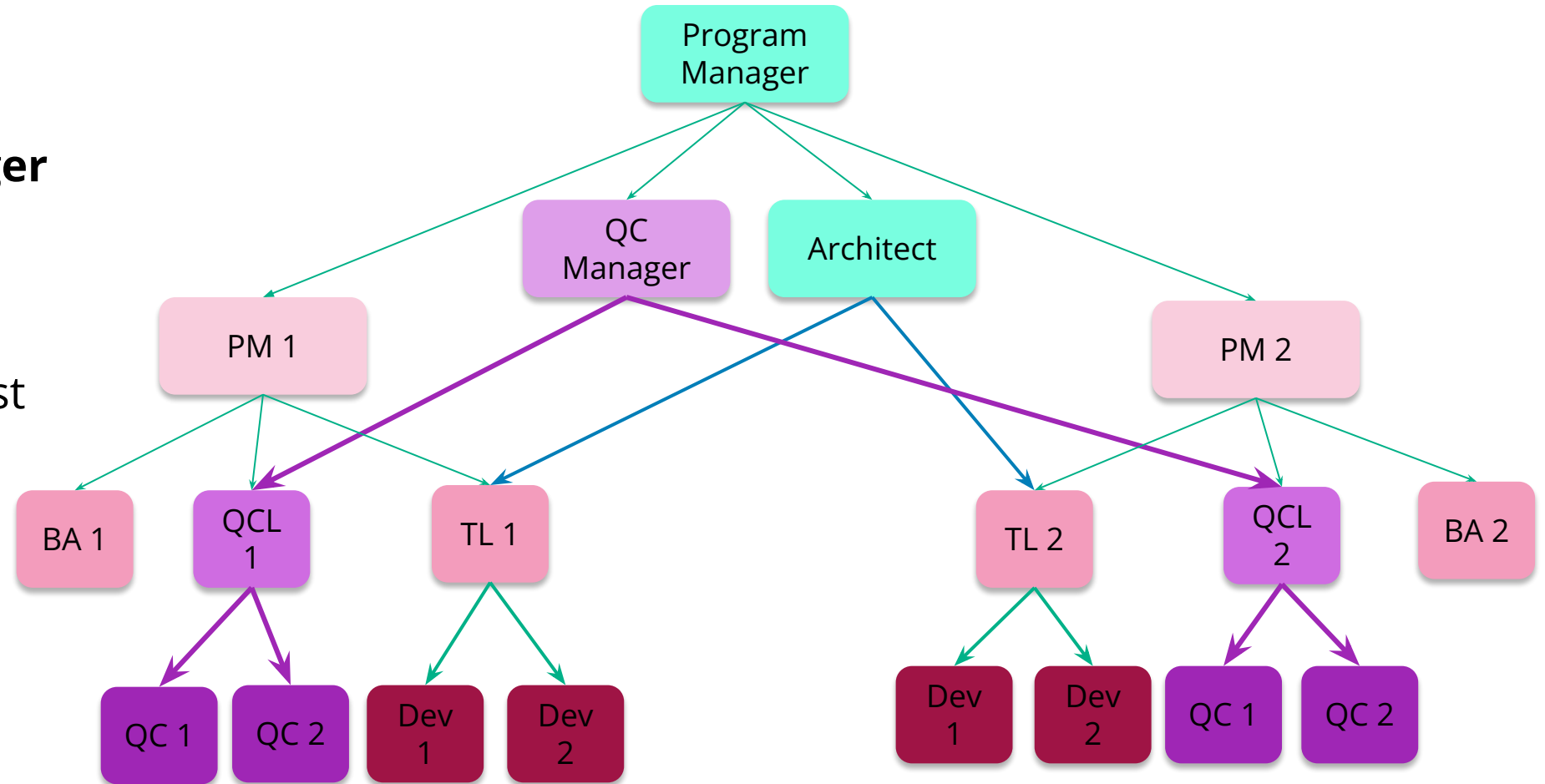
softserve

TYPICAL PROJECT TEAM STRUCTURE



TEAM ROLES AT PROJECT

1. **Project manager**
2. **Developer**
3. **QA or/and QC**
4. Business Analyst
5. Architect
6. Team lead
7. DevOps
8. Etc.



softserve

WHO IS PROJECT MANAGER(PM)?

PROJECT MANAGER is an executive, appointed by the organization to lead the team, responsible for achieving the project goals. The person who is responsible for planning, organizing, management, control and general control at all stages of the project.



softserve

PM`s MAIN TASKS

- ✓ project management
- ✓ communication with the client
- ✓ work with the software development team
- ✓ distribution of tasks between team members
- ✓ workflow planning
- ✓ motivation of the team
- ✓ control of the process and coordination of joint actions
- ✓ responsibility for time management, risk management and actions in case of unforeseen situations.

WHO IS DEVELOPER?

DEVELOPER is a person who creates software, writes, debugs and executes the source code.

A developer is also known as a software developer, computer programmer, programmer, software coder or software engineer, Dev.



softserve

DEVELOPER`s MAIN TASKS

- ✓ working with requirements
- ✓ writing and debugging the code
- ✓ fixing bugs found by testers
- ✓ participance in testing (writing unit tests and integration tests)



WHO IS TESTER?

SOFTWARE TESTER - a person who performs testing. (ISTQB)

A tester is necessary at every stage of the development process to ensure high product quality.

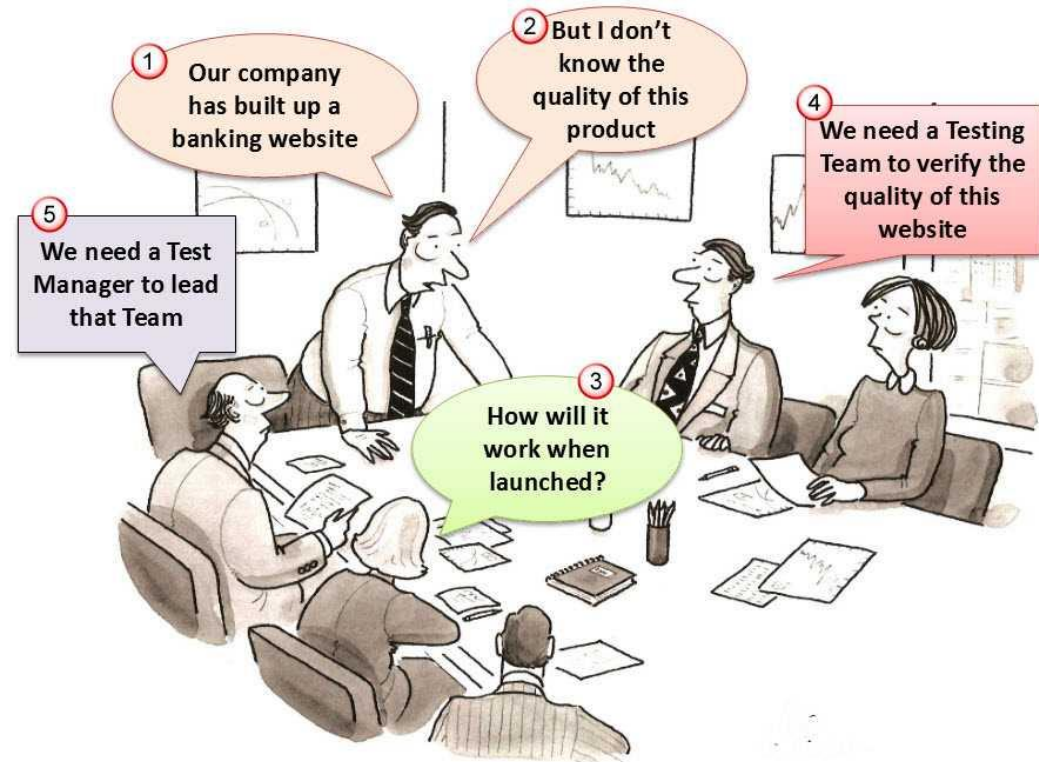
A tester is also known as a software tester, QC engineer or QA engineer.

There is some difference between QC and QA, but both may be called testers



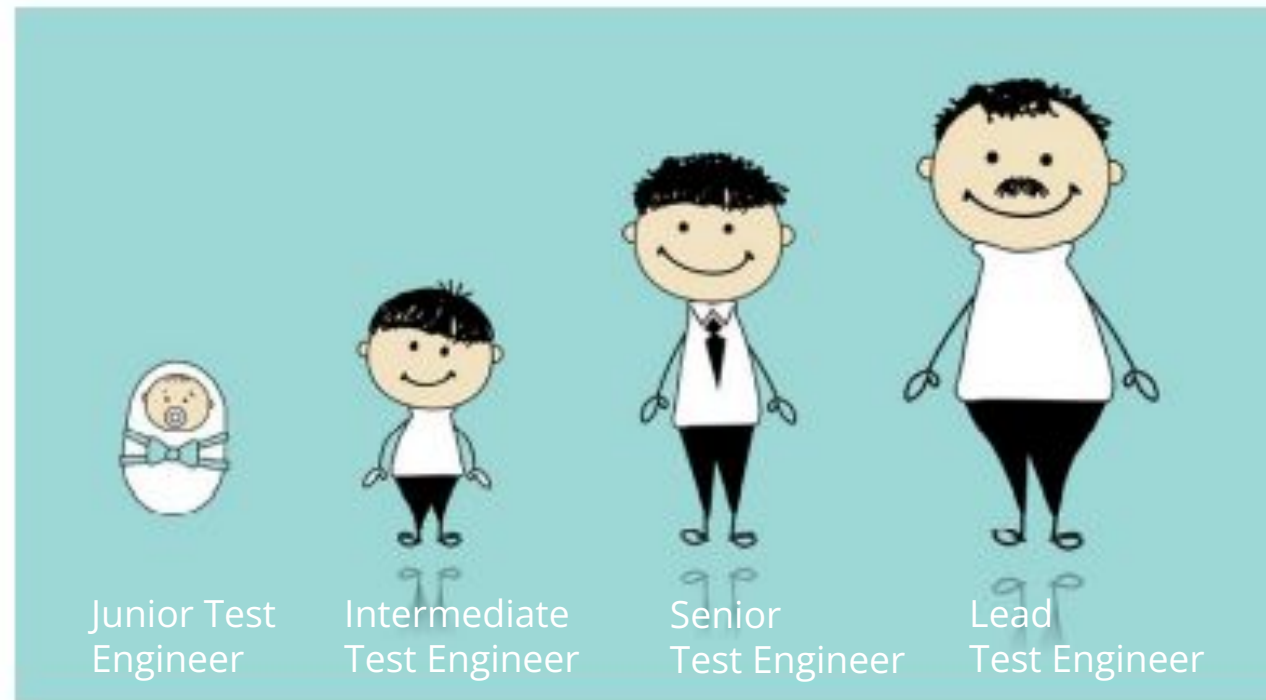
TEST MANAGER`s MAIN TASKS

- ✓ Developing or reviewing a test policy and test strategy for the organization
- ✓ Setting metrics to measure the quality of work and keeping track of everyone's performance;
- ✓ Calculating the testing budget, estimating the efforts;
- ✓ Supervising the testing part of the working process.



LEVELS OF PROJECT TEAM

LEVELS depend on work experience and knowledge in the field:



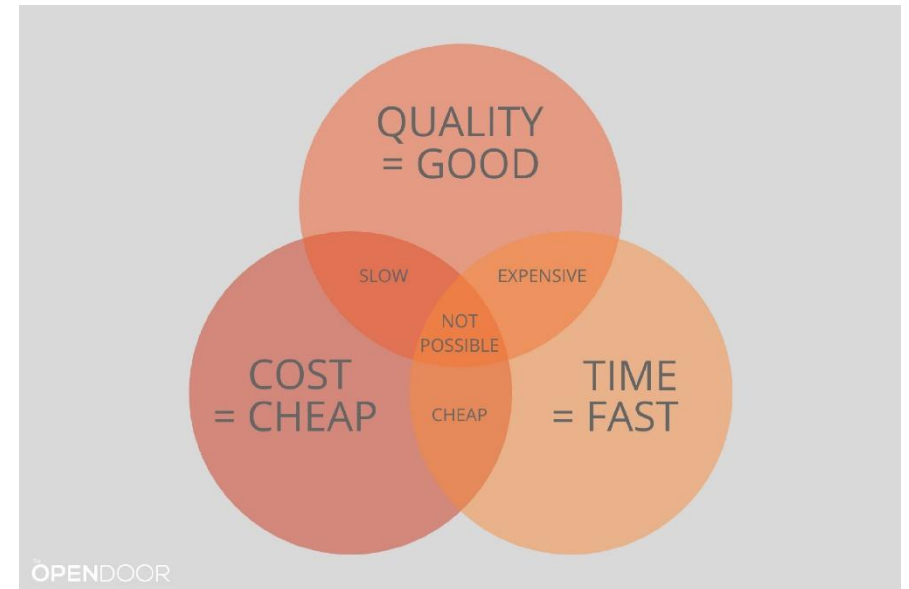
WHO IS CUSTOMER?

CUSTOMER is a recipient of the main result of the project, called the final product.

PROJECT CUSTOMER - a person who formulates requirements for the product and subsequently uses the results of the project to achieve their goals, most often commercial ones.

A good customer is competent (knows what to get and how to use it in the future) and has the right to make a decision.

TIME, COST AND QUALITY ARE IMPORTANT TO THE CUSTOMER!



WHO IS USER?

PROJECT USER is a final consumer of the product.

This is the person or organization that uses the results of the project.

THERE ARE PRODUCTS WHERE THE CUSTOMER AND THE USER ARE THE SAME PEOPLE.



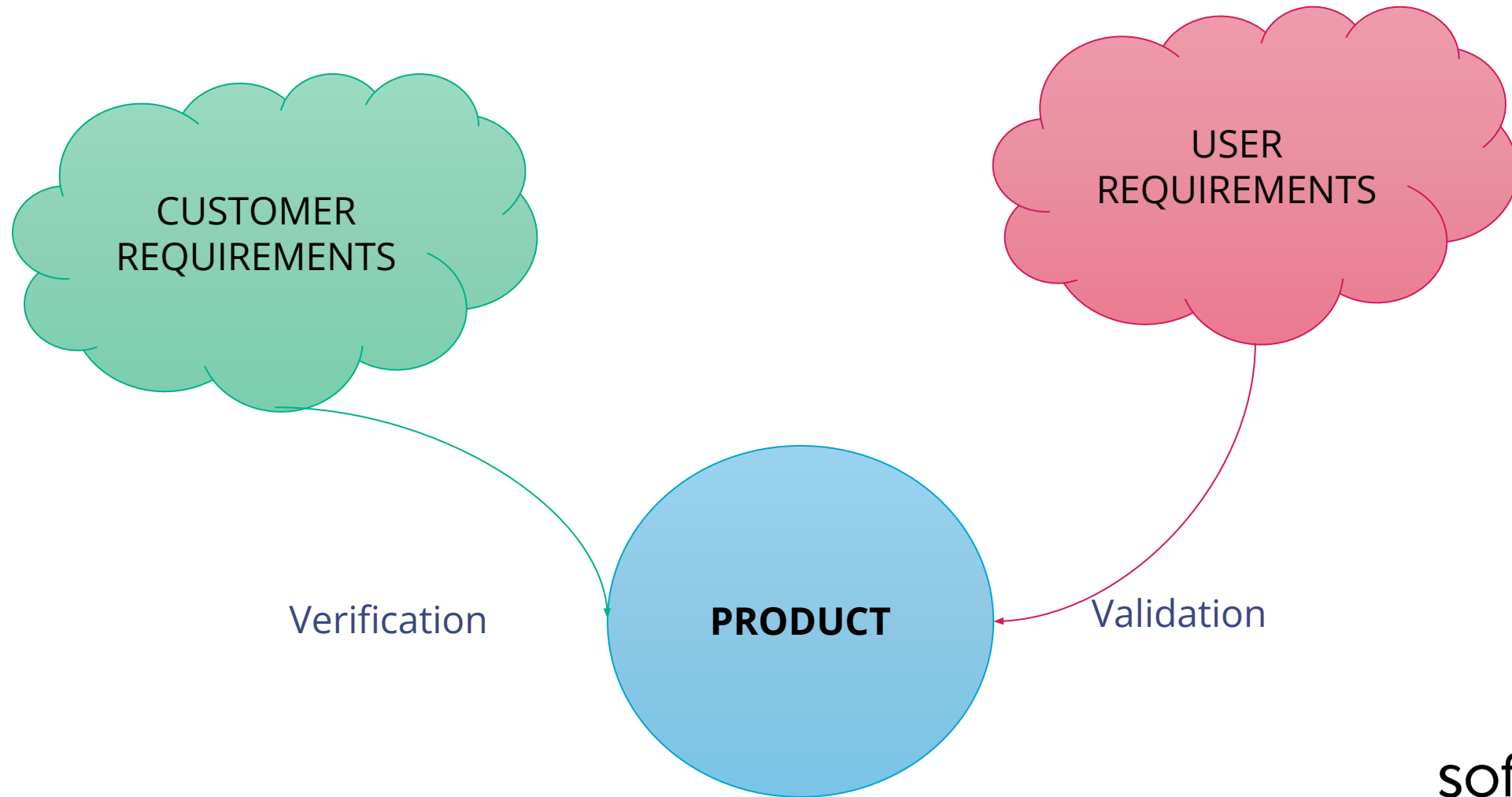
softserve

GENERAL TEST SCHEME



softserve

WHAT IS A QUALITY PRODUCT?



WHAT IS A QUALITY PRODUCT?

The product is of high quality if:

1. the customer is satisfied with the product
2. fully meets the requirements of the customer and users
3. developed on time and within the set budget



FUTURE

softserve