

COMMAND OVERVIEW

Captain Francis E. Spencer III

Commanding Officer, NSWC Philadelphia Division

Industry Day

04 April 2018

PHILADELPHIA NAVY YARD TODAY

- Philadelphia Industrial Development Corp (PIDC) acquired control in 2000
- \$150M in city funded infrastructure leveraged \$750M private investment
- Navy Yard Campus home to 12,000+ employees and 152 companies in office, industrial, manufacturing, and research and development sectors
- Major Tenants include: Urban Outfitters, Glaxo Smith Kline, Tasty Baking Company, Iroko Pharmaceuticals, Penn State University, Axalta, Jefferson University Hospital and Courtyard Marriott
- Full build out plan: 13.5M sq. ft. development; 30,000 jobs; 1,000+ residential units; \$3B investment; SEPTA subway extension

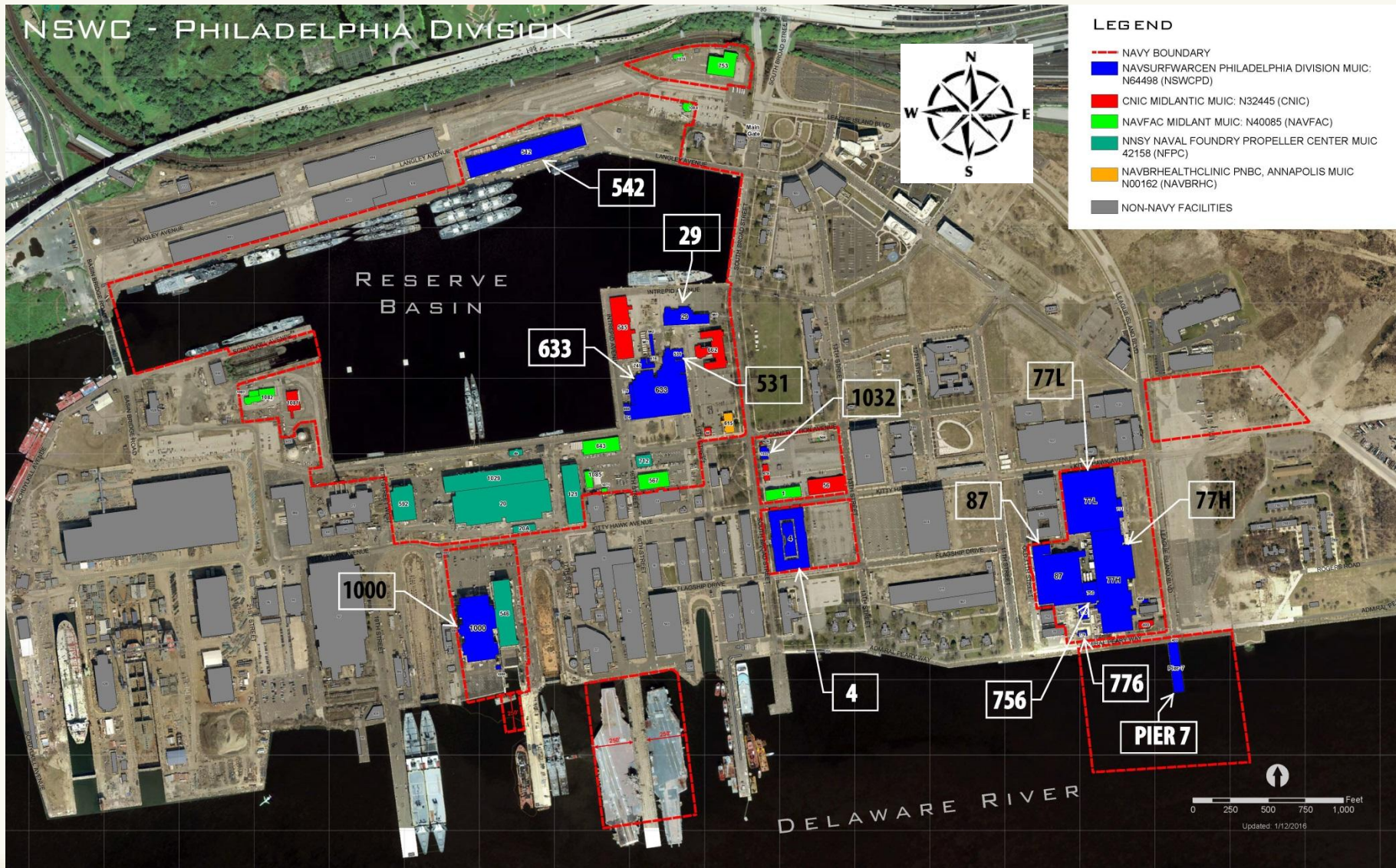


NSWC Philadelphia Division's Mission is to provide research, development, test and evaluation, acquisition support, engineering, systems integration, in-service engineering and fleet support with Cybersecurity, comprehensive logistics, and life-cycle savings through commonality for surface and undersea vehicle machinery, ship systems, equipment and material.

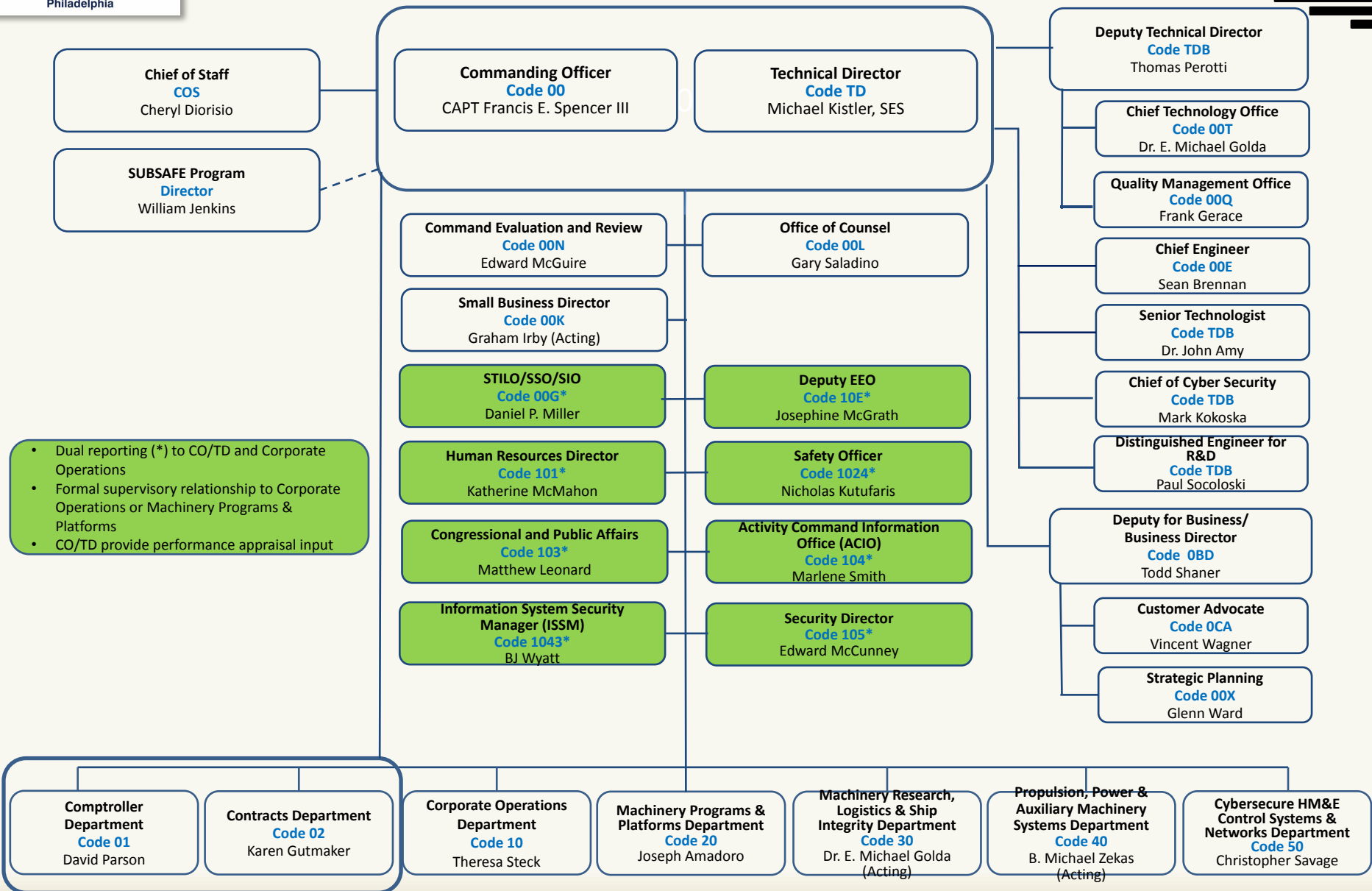


CAPT Francis E. Spencer III
NSWCPD Commanding Officer

THE NAVY YARD BASE MAP



NSWC Philadelphia Division Organizational Chart



- Dual reporting (*) to CO/TD and Corporate Operations
- Formal supervisory relationship to Corporate Operations or Machinery Programs & Platforms
- CO/TD provide performance appraisal input

NSWCPD FULL SPECTRUM ENGINEERING

COMNAVSEA PRIORITIES

- On-time Delivery of Ships & Subs
- Culture of Affordability
- Cybersecurity

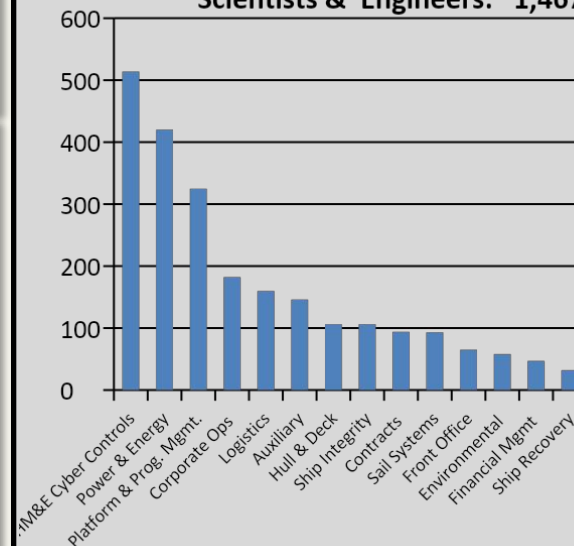
FUNDING

Source	FY17	FY18	EOFY18 Target
Reimbursable	\$522.2M	\$335.8M	\$550M
Direct Cite	\$553.3M	\$273.3M	\$600M

DELIVERABLES

FY18 YTD	Products
1,392	Fleet Support
308	Modernization/ Repairs
760	Distance Support
464	Test Events
9,909	Logistics
352	Quality
21,830	Corporate Operations
1,010	Contracts
8,678	Financial

Total Civilian Workforce: 2,348
Scientists & Engineers: 1,467



CORPORATE ENGINEERING KNOWLEDGE

- Navy-wide/Cross Platform
- Multi-Class/Across All Hulls
- Synergy Across All Engineering Functions

BUILD AN AFFORDABLE FLEET

SUSTAIN THE CURRENT FLEET

SCIENCE & TECHNOLOGY

- Joint S&T w/ Industry & Academia
- Design Studies
- Technology Development Roadmaps
- Rapid Transition to Applied R&D

RESEARCH & DEVELOPMENT

- Applied Research
- Rapid Prototyping
- Analysis of Alternatives
- Hardware-in-the-Loop Demonstration

TEST & EVALUATION

- 107 Test Facilities
- Full Scale Machinery System Testing
- Shipboard System Testing
- Qualification Testing
- Software V&V

ENGINEERING

- Cybersecure Machinery Systems
- SW Development
- Ship Design and Acquisition
- M&S
- Affordability through Commonality

FLEET SUPPORT

- Emergent Issues
- Ship Modernization
- Integrated Logistics Products
- Condition Based Maintenance
- Training

a/o 28 Feb 2018

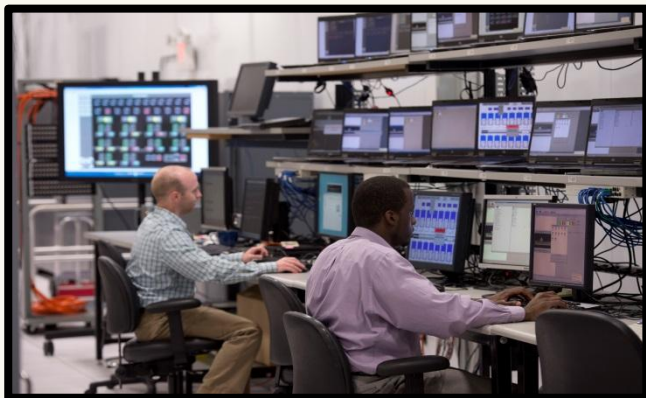
AUXILIARY & LIFE SUPPORT SYSTEMS COMPLEX

- 3 Test Facilities
- 2 Buildings
- Approximately 23,500 sq. ft.

PROPULSION & ELECTRICAL MACHINERY SYSTEMS COMPLEX

- 40 Test Facilities
- 5 Buildings
- Approx. 243,000 sq. ft.

CARGO, WEAPONS HANDLING, & HULL SYSTEMS COMPLEX



NSWCPD HAS 107 LABS &
TEST FACILITIES WITHIN 7
BUILDINGS
A TOTAL OF APPROXIMATELY
400,000 SQ. FT.



MACHINERY NETWORK, SENSORS, & DATA SYSTEMS COMPLEX

TEAMING PARTNERS

City and State








Colleges and Universities




























Industry









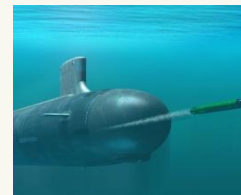










QUESTIONS