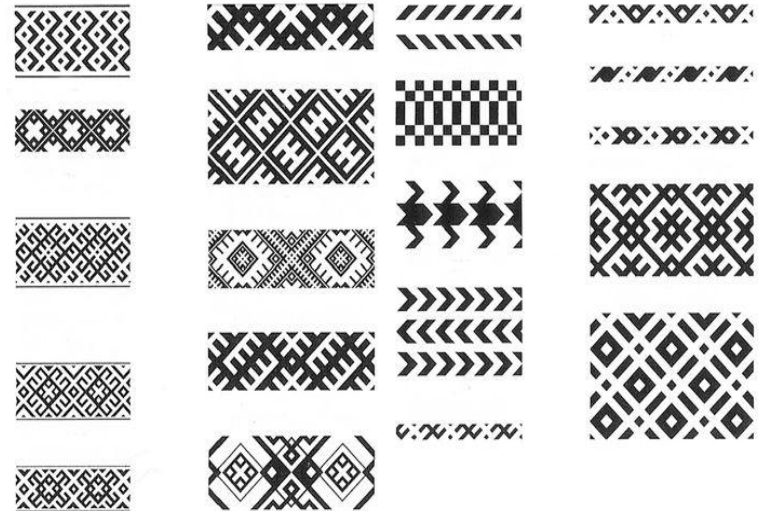
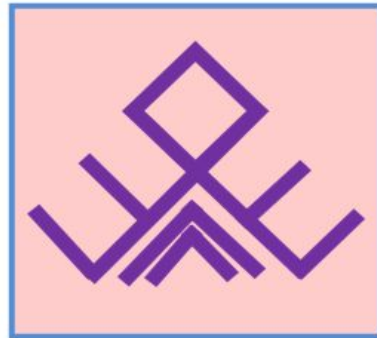
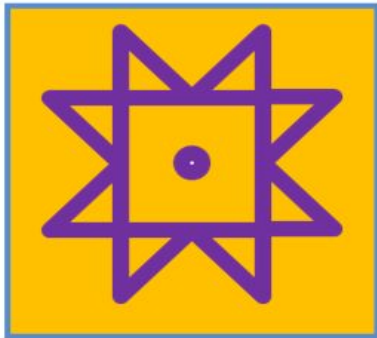
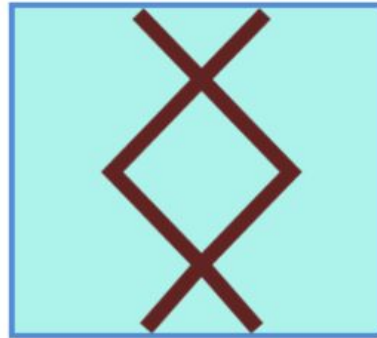
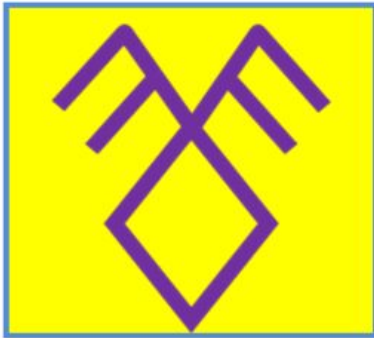


Ornament of Komi

- Ornament is the decoration of various geometric, vegetation, animal elements



- The ornament served not only as an ornament, it also fulfilled other roles: it protects from the jinx, it has magical significance



- Needlewomen decorated belts with ornaments. Belt protects from evil spirits and the helps hunters not to get lost in the forest. Belts were knitted from wool, woven from threads, braided, leather; narrow and broad.



- In the ornaments there are simple geometric elements (motifs): points, squares, rectangles, rhombus, crosses, triangles, diagonal lines. In more complex patterns, these elements are combined.



491



496



501



506



492



497



502



507



493



498



503



508



494



499



504



509



495



500



505

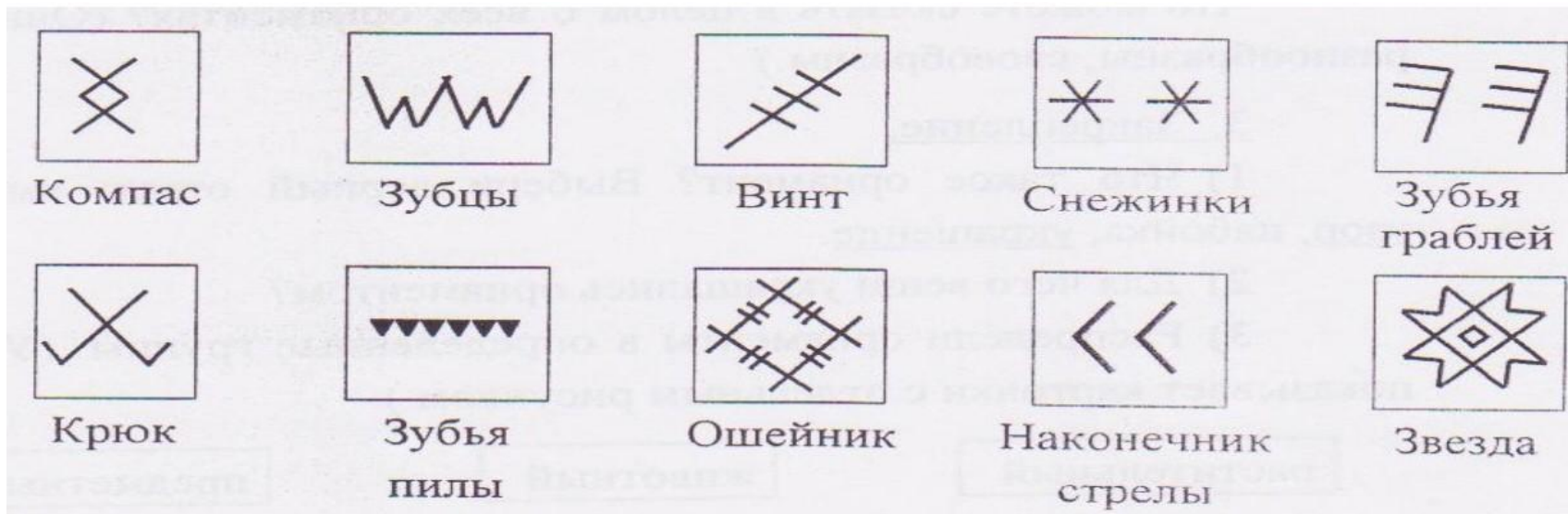


510

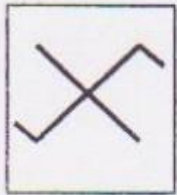
- Patterned knitting was very common. The pattern looks like if the elements of the ornament of different colors are put into one another. Because of the patterns clothes became warmer, and the pattern served as a talisman



- Ornaments can be divided into several main groups: - some are associated with tools and other objects (saw, compass)



- othes represent the animal world (horn, insects,)



Оленьи рога



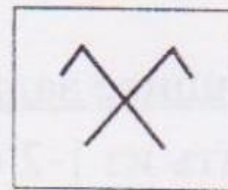
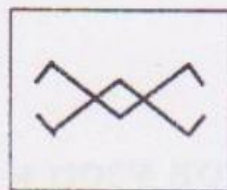
Насекомые



Куриная лапа



Рога коровы



Бараньи рога



- - the third are the pictures of plants (spruce, flower, grain...)

