

# Social work and Social Pedagogy

Підготувала:  
студентка 24 групи  
факультету соціальної та психологічної освіти  
Ганаженко М.Р  
Перевірив:  
Палагута І.В.

In the second half of the  
nineteenth century

"father of German teachers'

Adolf Dysterveh suggested

that the phrase "social  
pedagogy" to describe

schools with disadvantaged

and homeless children,

prevention, as now, juvenile

delinquency.





At the beginning of our famous German philosopher Paul Natorp put forward the idea of integrating educational forces of society to spread culture and education among the people, he called for a general pedahohyzatsyyu society and the purpose called for an educational association, "association of citizens" that would promote culture among the people .

Social work and social pedagogy - is not only the activities of providing direct social assistance to the needy. But also work to create favorable conditions for the development of personality and social, psychological, economic and legal context.



But also work to create favorable conditions for the development of personality and social, psychological, economic and legal context.



Between social work and social pedagogy there are some differences.





Social work - an activity aimed at solving various problems of the client.



While social pedagogy - is social work, aimed at the development of personal potential client.



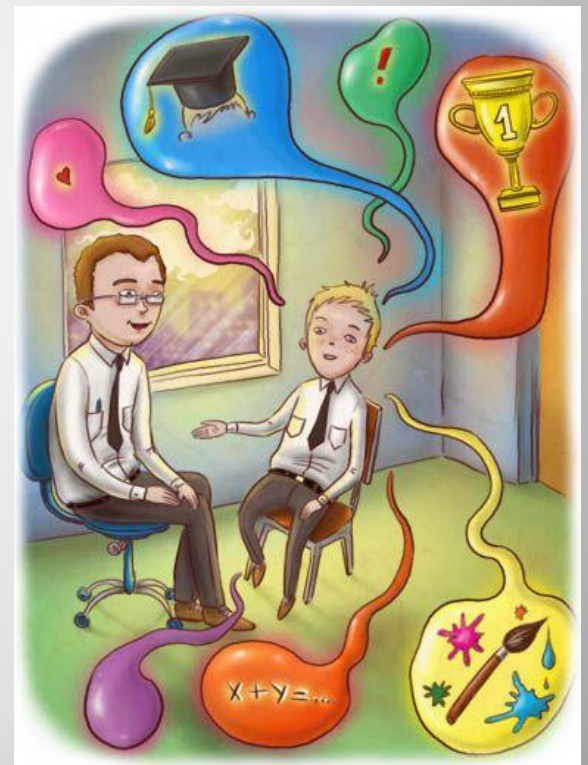
Any social pedagogue easily be seen as a social worker, as he engaged in activities to solve educational problems of the client.



In science, as well as abroad, and in Russia there are several approaches to solving the problem of the relationship of social work and social pedagogy.



As a concept, today, there is a tendency not to share these concepts and examine social work and social pedagogy as "one and the same scientific disciplines, research and similar theorem, which can be seen also in the process of learning by doing".



# **The Russian science**

**researchers actively  
discuss**

**the relationship of social  
and social work.**

For example, Zimova I.A.

Social pedagogy understands how  
special branch of social work in  
natural science and technical  
education.





Thus, social pedagogue - a social worker, "serves as the education, development, improvement of child student."

The task of the social worker is to encourage the physical, moral and spiritual strength of the child, it should help educate yourself as acceptable by society: continuous improvement, the ability to organize themselves.





Social worker, in terms of the scientist - that is, who work in the society, because the scope of their activities can be a school, and the foster family and the medical establishment and the neighborhood.





Its main feature is the creation and development of relations, contribute to the success of professional activities, relations between people and their environment, revitalization efforts in solving their own problems, mediation between conflicting.



As a social worker, he is also a social worker, but works mainly in education issues. This educational function of social pedagogy disseminated as children and adolescents, as in adults, is a major.



It follows that "social pedagogue" - just one of the majors social worker (along with so-called "social lawyer", "social psychologist", "social doctor"), so social worker - a concept widely.



G.N. Filonov. examines the social pedagogy as a branch of science teaching, applied component, which advocates social work.



Topchiy LV argues that social work and social pedagogy - are independent subjects and medical scope of practice, based primarily on a foundation of social philosophy, sociology and psychology, social pedagogy in their part of general pedagogy.



Pavlenok PD. the best thing is consideration of social pedagogy and social work as independent scientific institutions and disciplines as well as specific types of practice.

Social educators are called to decide themselves the task level, can work in hospitals, detention centers, nursing homes, orphanages and schools; to assist the disabled, single mothers, lagging in school children, people with mental illness exacerbation occurred, former criminals.

Consequently, social work practice aims to solve social problems, assistance to vulnerable or unprotected populations and social education rather involves prevention and school education.





**THANK YOU FOR ATTENTION**