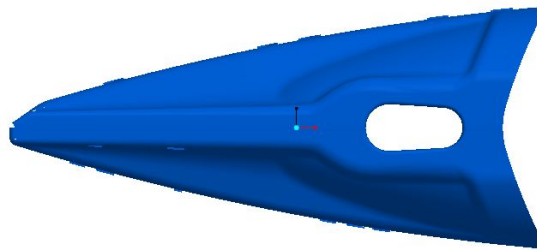
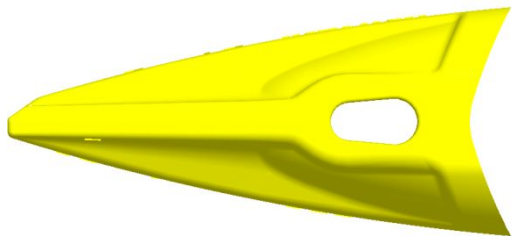
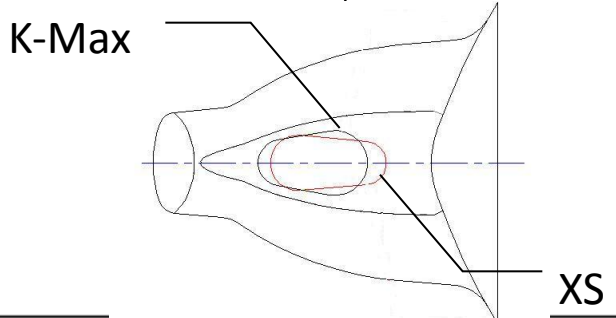
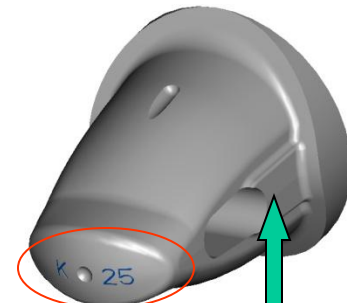
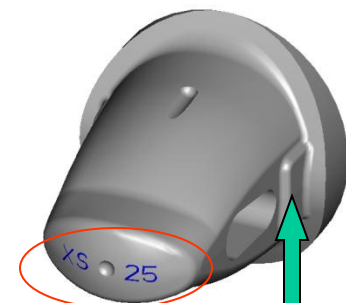


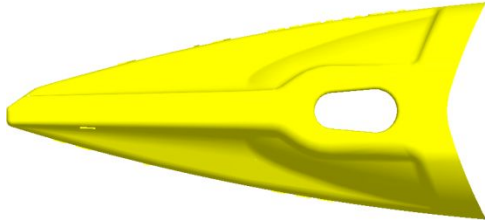
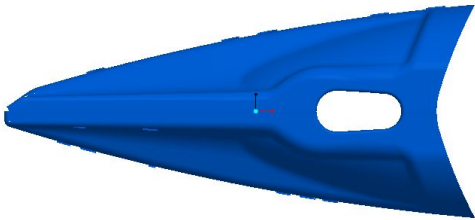
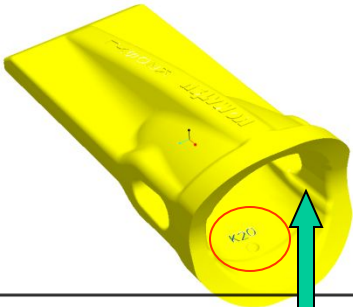

KMAX


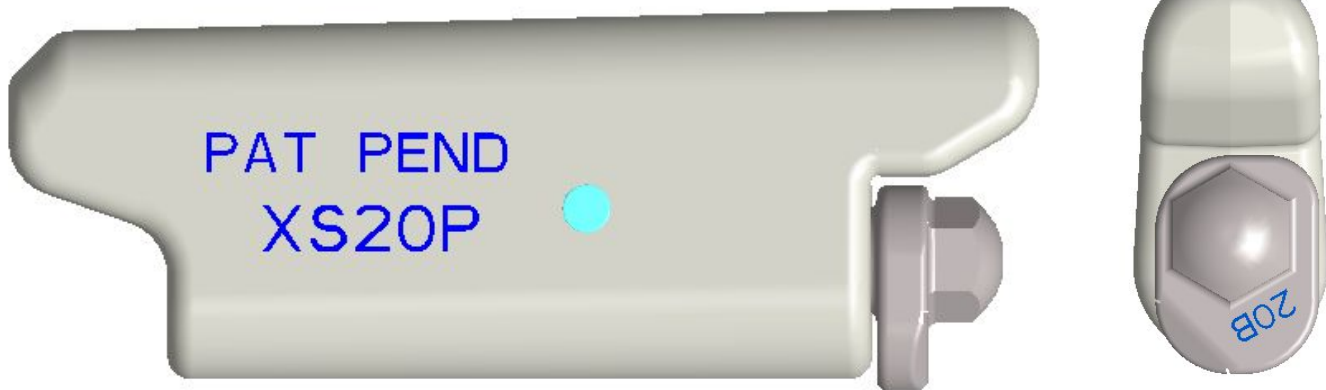
XS
EXTREME
SERVICE

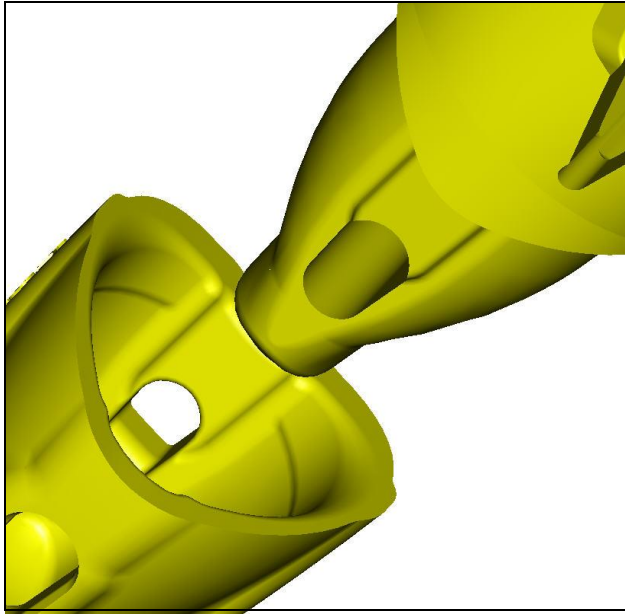
KMAX vs. XS



Item	K-Max	XS
Pin Hole		
Color	Yellow	Blue
Nose		
C-Mod	Long and Narrow	Short and Wide

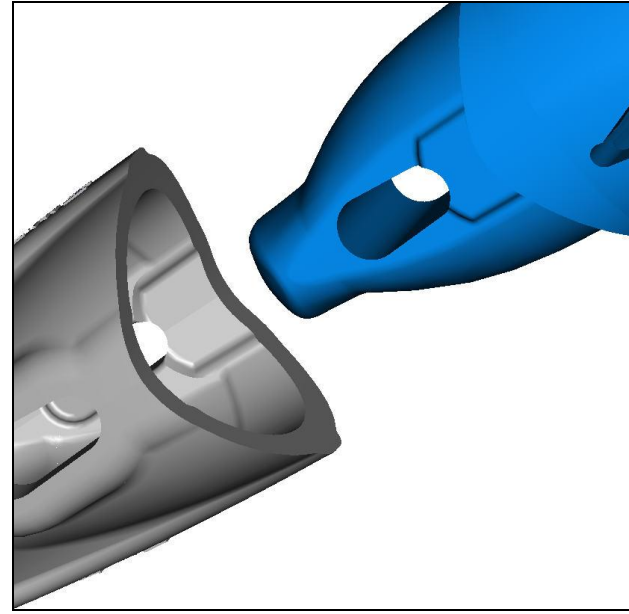
Item	K-Max	XS
Pin Hole		
Color	Yellow	Blue
Pocket (K or XS lettering inside pocket)		
C-Mod	Long and Narrow	Short and Wide

<p>KMAX</p> <ul style="list-style-type: none">•Wide at top•Narrow on bottom	 <p>Side view: KP20 PAT PEND</p> <p>Top view: 20B</p>
<p>XS</p> <ul style="list-style-type: none">•Narrow at top•Wide on bottom	 <p>Side view: PAT PEND XS20P</p> <p>Top view: 20B</p>



KMAX

Long and Narrow C-Mod



XS

Short and Wide C-Mod

- KMAX/XS Teeth, Adapters and Pins are NOT interchangeable.