

Sky
L1,L2
service manual

Agenda

- **Productp3**
- **Disassembly guide p4-p14**
- **L1&L2 Repairing guide.....p15-p24**

Product

Model:

Platform: MTK6575

LCD: 4.0WVGA 480*800 16.7M TFT Capacitor TP

Sup: Dual SIM WCDMA : 2100 MHz; GSM 900/1800 MHZ

Memory: 4GB+4Gb (Nand&sdram+RAM)

Battery: 2200mAh

Charger: Travelling

USB cable: micro 5 pin

Earphone: 3.5jack

CAM: Main 5M + SUB 0.3M CMOS

System: Android4.0

Sup: T-Flash, MP3, MP4(REC), FM, USB, ATV

Sup : GPS, WIFI, BT , FM

1. Tools list

Tweezer /Cross screw driver/ Solder/Tommy bar/hot gun

Tommy bar

Tweezer

Cross Screw driver

Solder iron



Hot gun

2. Battery cover disassembly

Guide:

Disassemble battery cover as below picture;

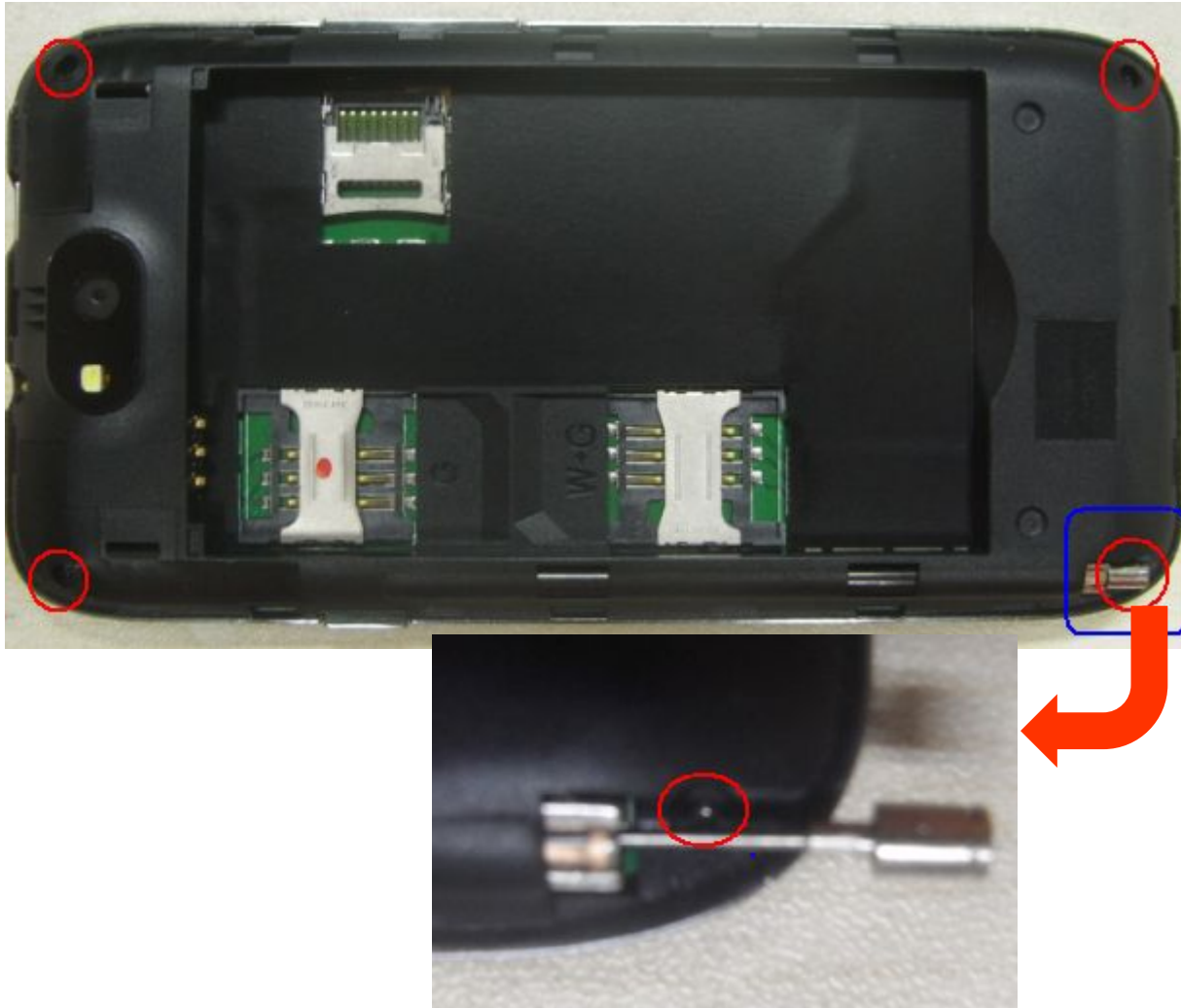
**Battery
cover**



3. Back cover disassembly

Guide:

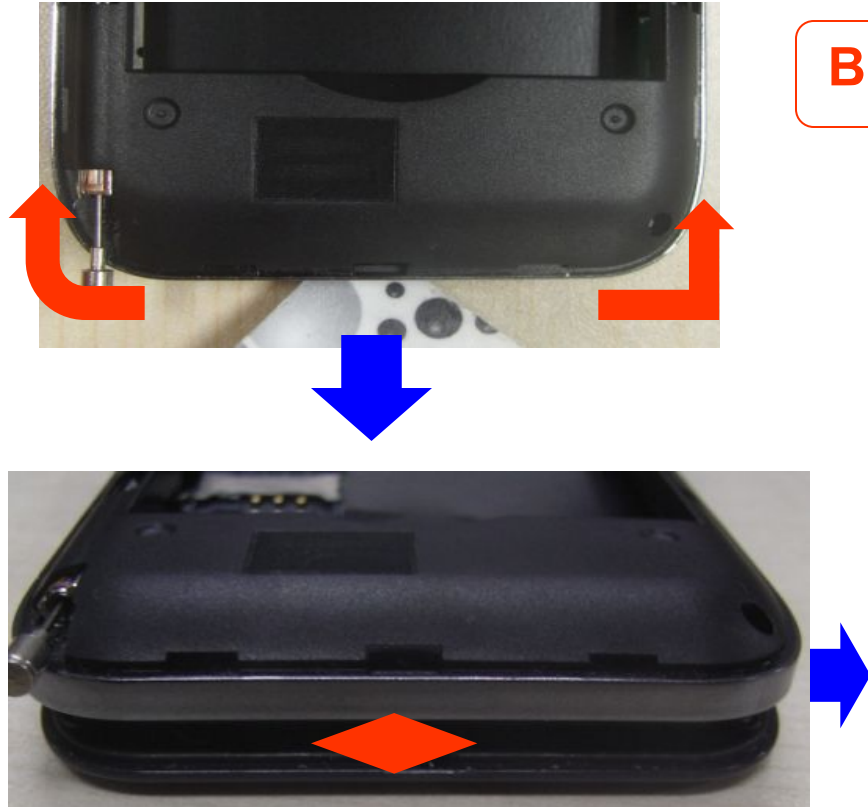
1) Unscrew 4 screws in back cover as picture.



3. Back cover disassembly

Guide:

2) Disassemble back cover with tool as picture;



Back cover

Vibrator

Speaker



4.MB&Front cover disassembly

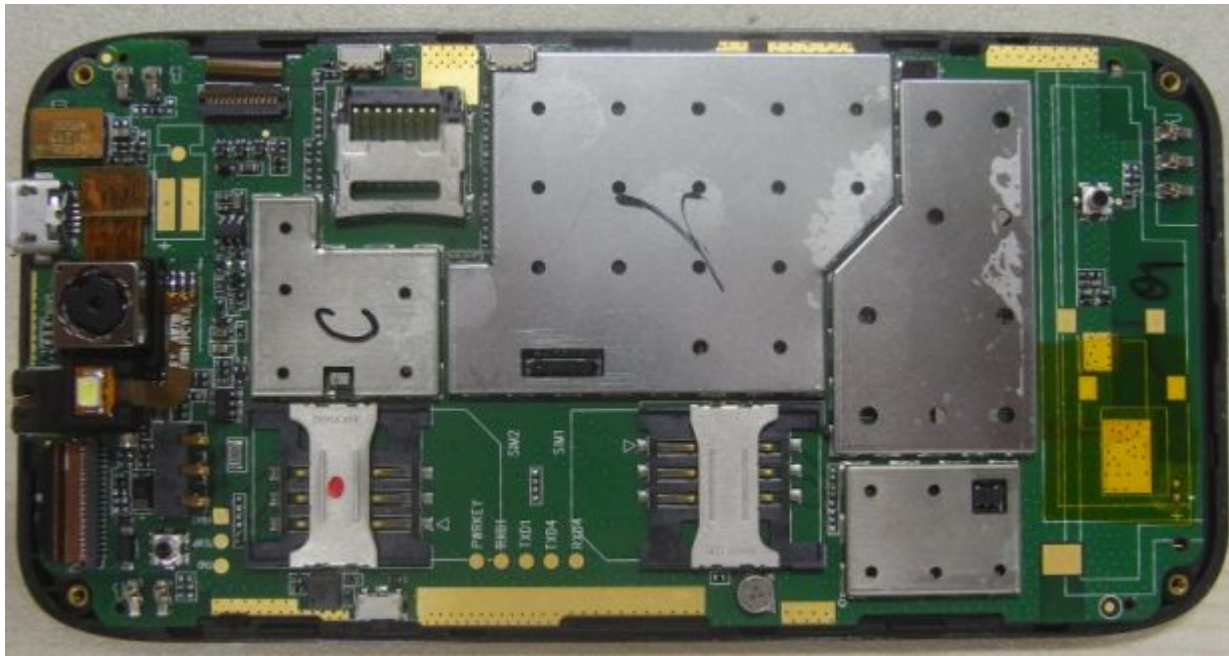
Guide:

1) Disconnect LCD connector & TP connector;

Front
Camera
CON.

LCD
Connector

T card
socket



USB

SIM 1

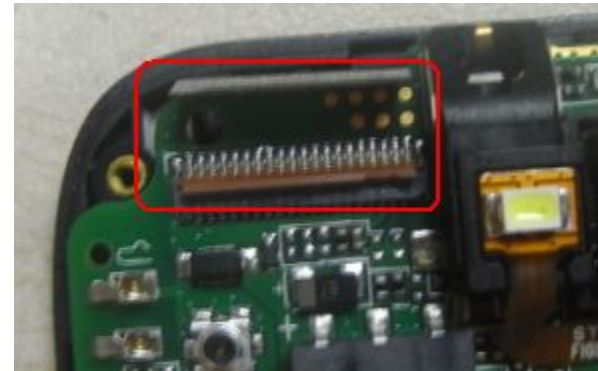
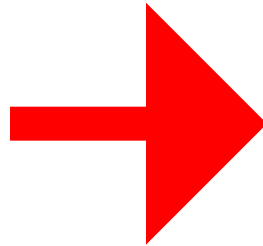
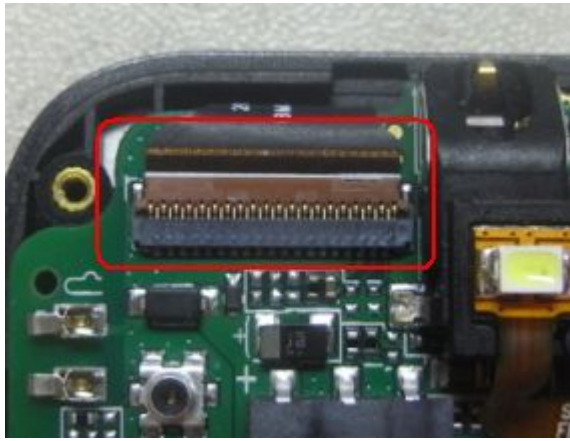
TP connector

5.0M
camera

SIM 2

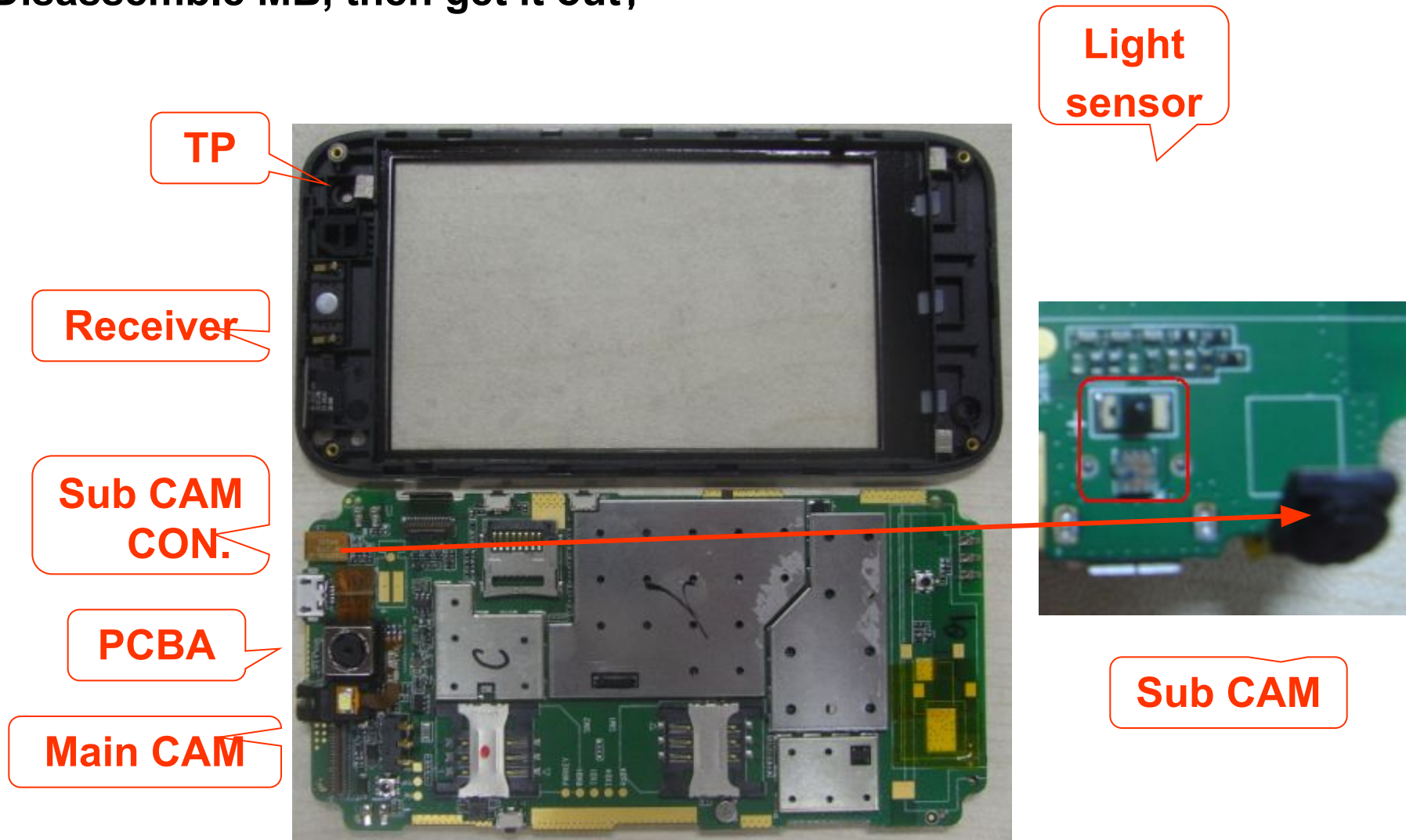
4.MB&Front cover disassembly

2) Disconnect one connector as below picture ;



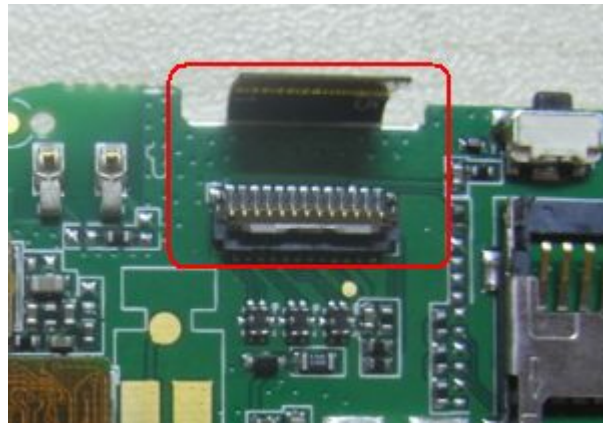
4.MB&Front cover disassembly

3) Disassemble MB, then get it out;



4.MB&Front cover disassembly

4) Disconnect LCD connector , and Separate LCD from PCBA



LCD connector

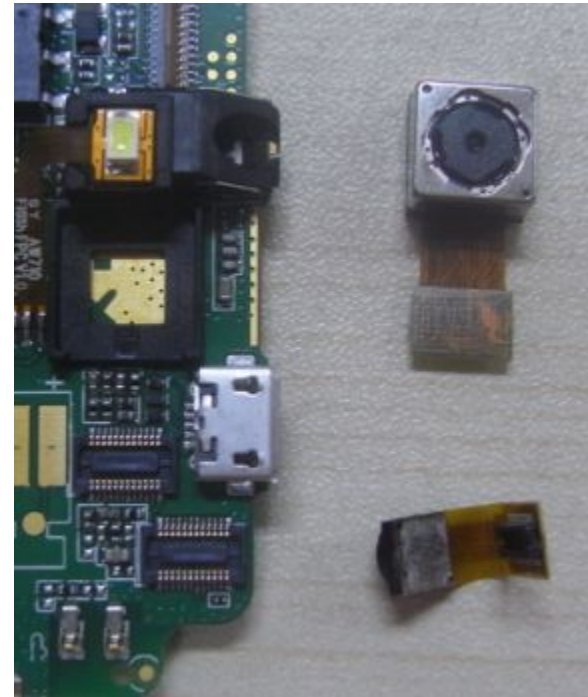
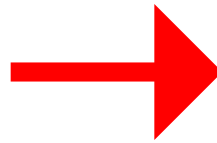


LCD

LCD connector

5.CAM disassembly

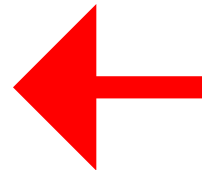
Use tweezers to disassemble CAM;



6. TP disassembly

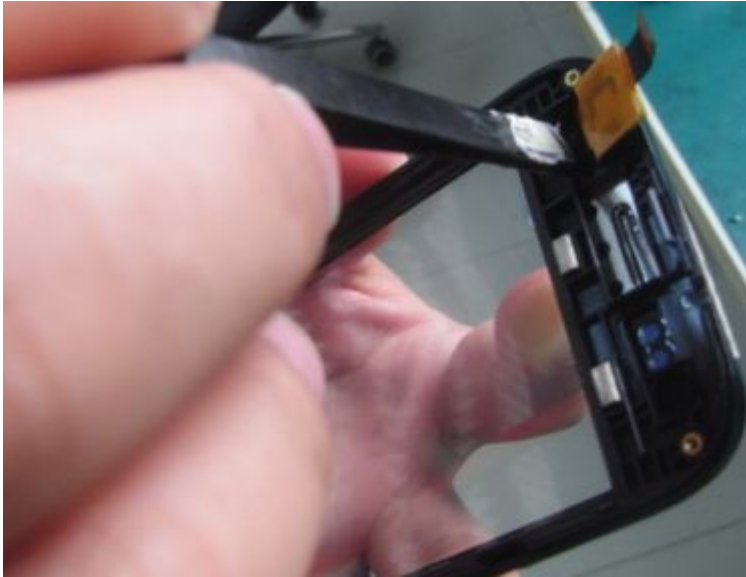
1) Use hot air gun to disassemble

- 1、 Hot air gun degree set as 120°C
- 2、 Use hot air to heat TP for 2~3 minute.



6.LCD&TP disassembly

2) Separate TP and front cover as below picture.



Note: When you replace new TP, please clean the glue tape on front cover, then stick new glue tape before assemble new TP.

L1&L2 Repairing Guide

1. LCD display problem

- a. Upgrade SW.
- b. Check if LCD or LCD connector broken, if not, replace a new LCD ;
- c. Check LCD connector on MB ;
- d. For L3 repairing, refer schematic diagram ;

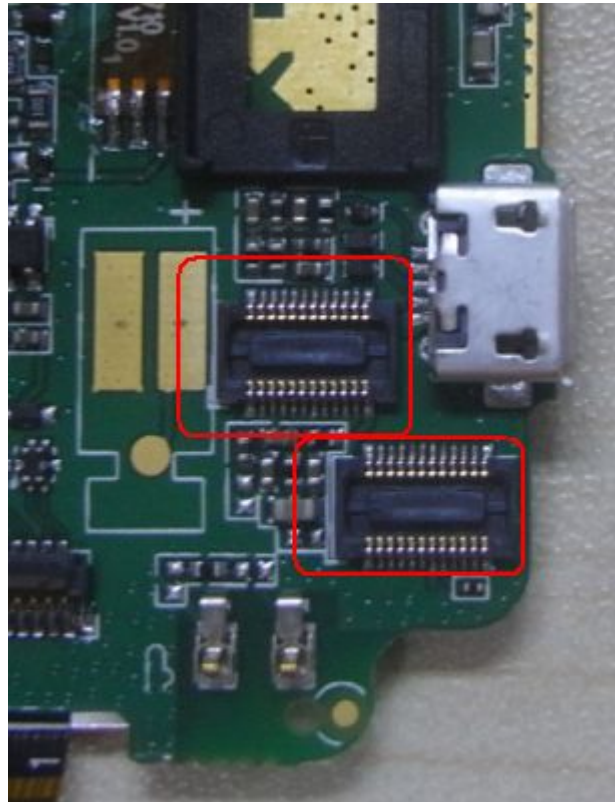
LCDconnector



2. CAM problem

- a. Check if the CAM connector is loose;
- b. Replace with a good CAM, and check if it is due to CAM problem;
- c. Check CAM connector;
- d. Check the components around CAM connector whether there is some missing ;

**Main CAM
connector**

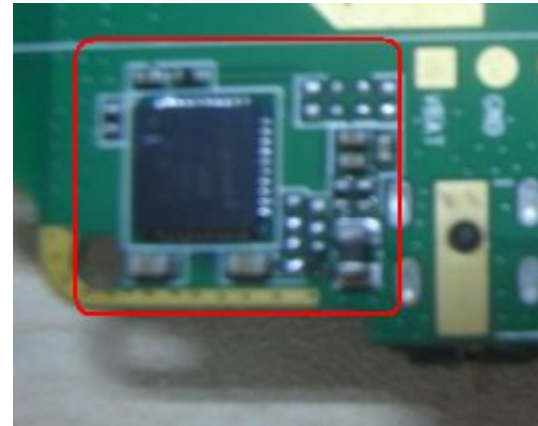
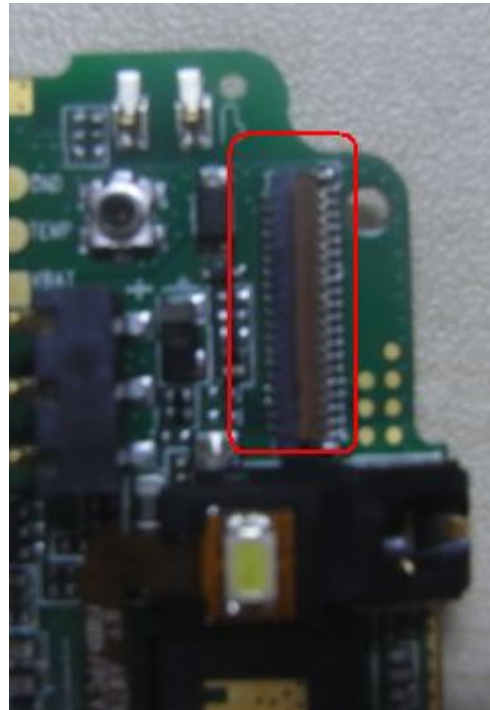


**Sub CAM
connector**

3. TP problem

- a. Upgrade SW .
- b. Check if TP connector is loose ;
- c. Replace a good TP to verify ;
- d. Check if there is soldering problem on TP connector ;

TP connector



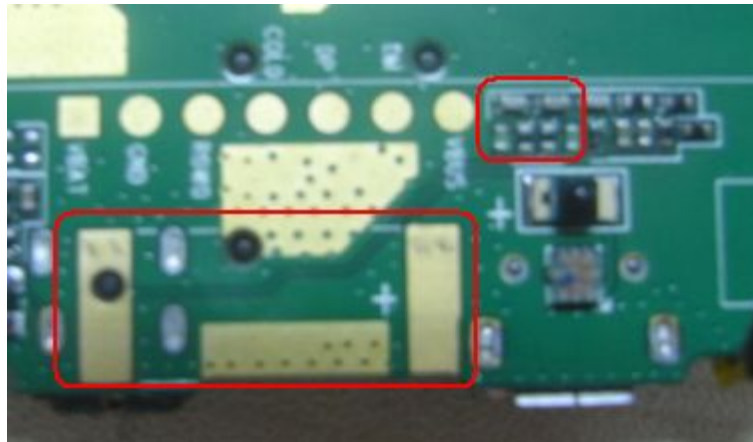
4. Rington problem

- Check spring of speaker if it is twisted;
- Check the resistor value of speaker;
- Check components around speaker connecting points.



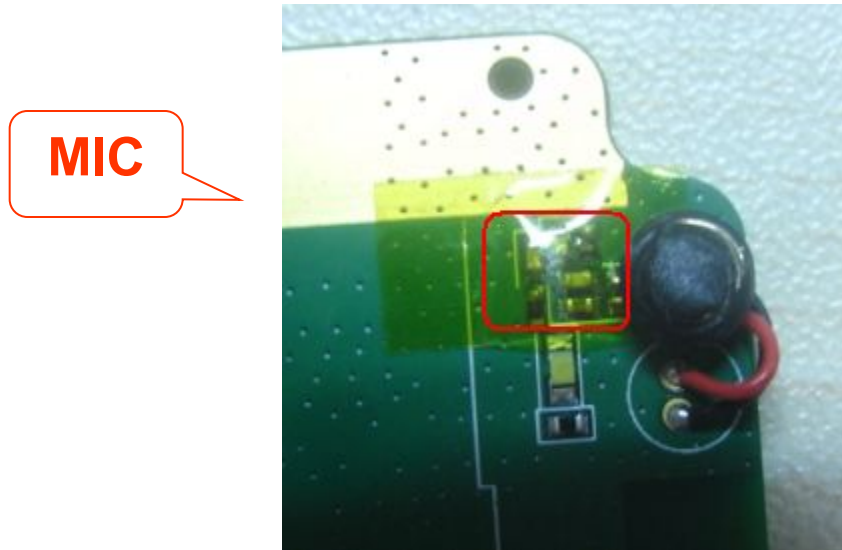
5.Receiver problem

- a. Check spring of receiver;
- b. Check the resister value of receiver ;
- c. Check the components around receiver connecting points if missing;



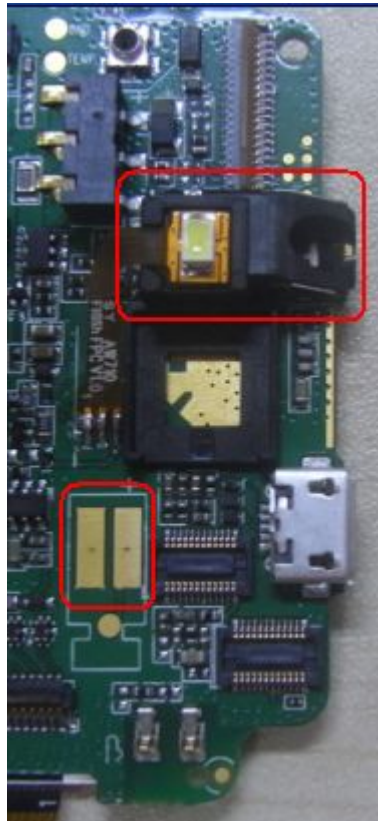
6.MIC problem

- a. Check MIC if there is poor soldering ;
- b. Replace a new MIC ;
- c. Check if there is some components missing around MIC ;



7. No vibration or earphone problem

- a. Check spring of vibrator ,check earphone jack if there is poor soldering ;
- b. Check vibrator connecting points on MB ;
- c. Replace new vibrator or earphone jack ;
- c. Check the components around earphone jack and vibrator connecting points。



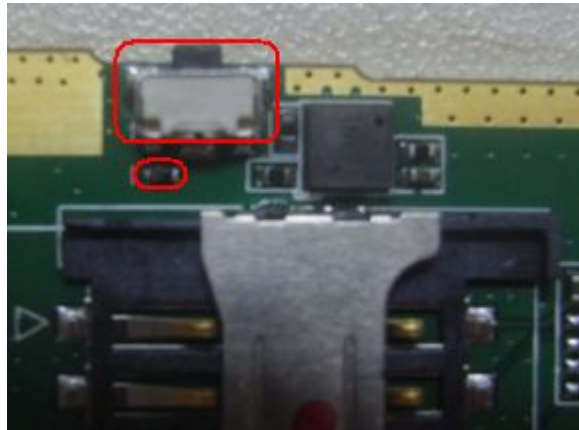
Earphone jack

Vibrator connecting points

8. Dead

- a. Check the voltage of battery if in range 3.8V to 4.2V, then check battery connector;
- b. Upgrade SW;
- c. Check power key and the components around it;

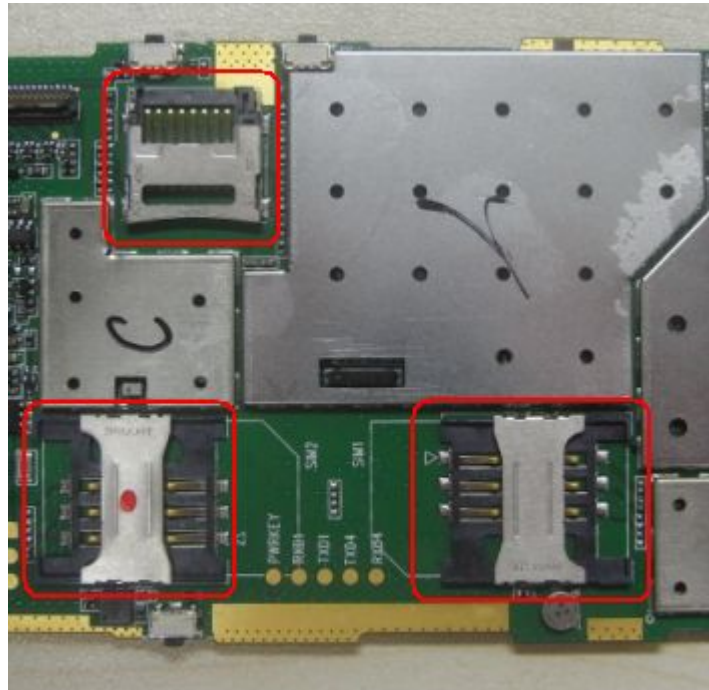
Power key



9. Can not detect SIM card or T card

- a. Check the socket if there is poor soldering or pin twist;
- b. Replace new socket;

T car socket



SIM 2 socket

SIM1 socket

End

Q&A